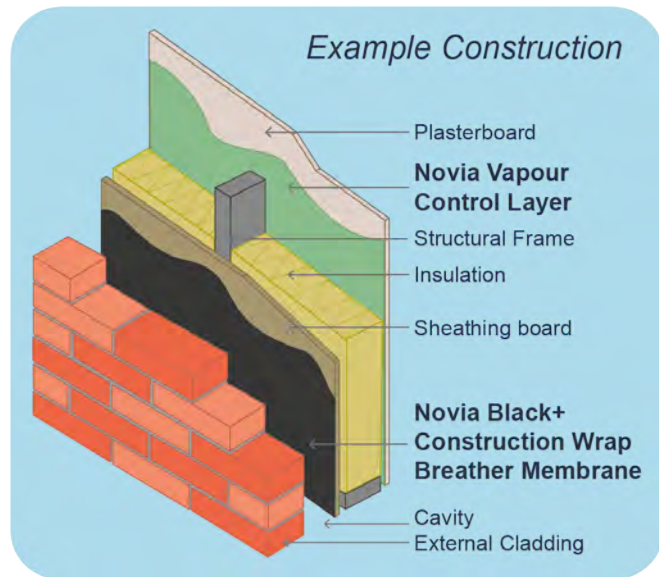


Novia® Black+ Construction Wrap is a high specification 2.7m x 100m wall breather membrane, and is black in colour. The material is designed for use in all insulated wall applications where a high specification breather membrane is required. The product is strong, has excellent water resistance, high breathability, and is lightweight and easy to handle.

Novia® Black+ Construction Wrap is coloured black on one side and grey on the other, but with no text or images on either side, except overlap guide lines.



- Good tensile and nail tear strength
- 1 month UV resistant
- Install with Novia speciality tapes
- High performance wall breather
- Highly vapour permeable
- Not recommended for roof applications due to 2.7m width, but still UKCA approved in roofs
- UKCA / CE compliant to EN 13859-1 (roofs) and EN 13859-2 (walls)
- Recyclable and ecologically harmless
- 3-layer laminate with microporous core

	Value	Units	Test Method
Standard Width	2.7	m	
Roll Length	100	m	
Roll Weight	28	kg	EN 1849-2
Nominal weight	102	g/m ²	EN 1849-2
Tensile strength MD / CD	250 / 140	N/50mm	EN 12311-1
Elongation MD / CD	60 / 70	%	EN 12311-1
Resistance to tearing MD / CD	100 / 95	N	EN 12310-1
Sd value	0.029	m	EN ISO 12572
Resistance to water penetration	W1	Class	EN 1928
Resistance to water penetration (after ageing)	W1	Class	EN 1928
Low temperature stability (no cracking at)	- 60	°C	EN 1109
Reaction to fire	E	Class	EN 11925-2
UV resistance	1 Month		



DS1122B+CWBREATH



Black+ Construction Wrap Breather Membrane

Installation guidance for walls :

Fix the Novia Black+ Construction Wrap Breather Membrane to the wall structure; ensure upper layers overlap lower layers. Work from the bottom moving upwards and ensuring there are minimum overlaps of 100 mm on the horizontal joints. Do not begin a vertical lap joint within 300 mm of a corner, and vertical laps should be at least 150 mm. Ensure the bottom timber is also protected by an overlap. Fix at suitable intervals with galvanised nails, stainless staples or similar fixings that will be permanent.

Do not leave the membrane unnecessarily exposed to weathering, high winds, excessive UV etc. as this may cause damage over time. If you must leave the membrane exposed for extended periods of time, consider the use of suitable temporary protection materials.

Tapes :

We advise the use of Novia installation tapes, which will greatly improve the performance and overall airtightness of the installation. We offer a single-sided Novia Breather Membrane Lap Tape for standard installations, but for high specification work where there is even greater emphasis on air-tightness, we also offer the optional Novia Double-Sided Adhesive Tape to provide a high performance dual tape seal.

Other notes :

- Ensure that for all wall or warm roof applications, a Novia Air and Vapour Control Layer such as Novia VC2 or VC200 Reflective is installed on the warm side of the insulation to limit unwanted interstitial condensation. As little as 1 - 3% moisture contamination within the insulation can adversely affect the achieved thermal performance by more than 30%.
- Novia Black+ Construction Wrap Breather will reduce the risk of condensation within the roof space but in certain atmospheric conditions it can never be totally eliminated.
- Always handle material carefully to prevent tears and punctures and repair all damage.
- Ensure that sufficient ventilation is incorporated to comply with all relevant building regulations and technical standards, such as BS 5250.
- Store product in suitable conditions.

This datasheet represents the latest understanding of the subject. However, it is for the ultimate user to determine suitability of our products within specific applications. The advice and information we have provided is general in nature, and is subject to future revision.

DS1122B+CWBREATH