

NON-WOVEN POLYPROPYLENE GEOTEXTILE FOR PROTECTION, SEPARATION, FILTRATION AND DRAINAGE OF WATERPROOFING SYSTEMS



Available g/m²

125

200



High puncture resistance



High tensile strength



Separation materials & maintainis their properties



Great durability



Resistant to inclement weather



Easy application to supports

DANOFELT® PP is a non-woven geotextile formed by polypropylene threads, interwoven by needling, without the need or application of chemical binders. It has excellent mechanical and hydraulic behavior.

ADVANTAGES

- High puncture resistance.
- High tensile strength.
- It provides great mechanical protection.
- It maintains the mechanical and hydraulic properties of the materials it separates.
- Great durability.
- Resistant to active substances in the soil and inclement weather.
- Easy installation, facilitating civil engineering.
- It increases the useful life span of the elements that it protects.

USES

- As a separating layer between chemically incompatible materials.
- As a filtering layer, avoiding the passage of fines and clogging of the system.
- As a draining layer, facilitating the evacuation of water.
- As a protective layer against mechanical damage and puncturing.



METHOD OF APPLICATION

- Clean the support.
- Unroll the geotextile on top of the support.
- Overlaps must be at least 20 cm.
- Where applicable, it is recommended to fix the joint by sewing or stapling.
- The pouring of the subsequent materials must be done without damaging the geotextile.
- Any extension or compaction equipment when installing the subsequent layers of the system should not circulate on the surface of the geotextile at any time.
- The direction and placement of the following layers should not affect the overlap of the geotextile layer.

Precautions

- Do not expose to direct contact with fresh concrete.
- Do not use in systems that require mechanical fastenings.

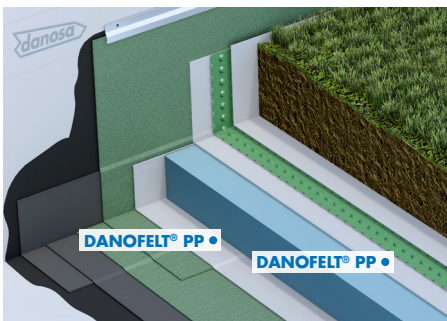
PRODUCT RANGE

Product name	Grammage (g/m ²)	Rolls size (m)
DANOFELT® PP 125	125	2,25 x 100
DANOFELT® PP 200	200	2,25 x 100
		2,20 x 140
		4,40 x 140

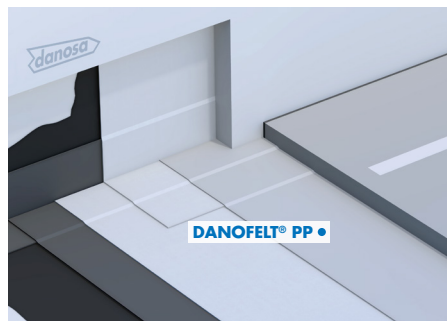
STORAGE RECOMENDATIONS

- The product must be stored horizontally.
- The product should always be stored in a dry place protected from rain, sun, heat and low temperatures.

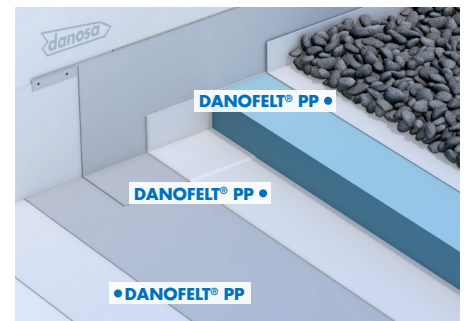
EXAMPLE SOLUTIONS



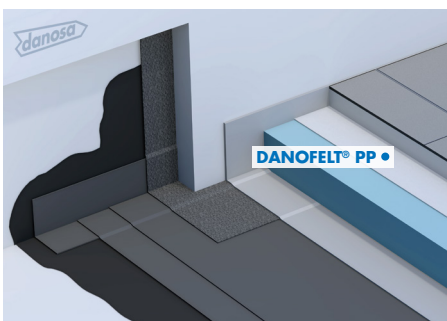
Intensive landscaped flat roof



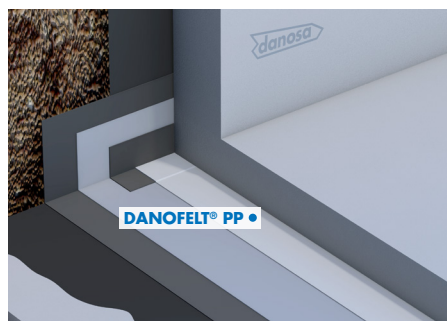
Within road systems



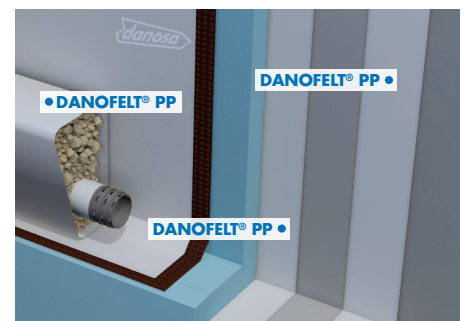
Ballasted inverted flat roofs



Acoustic solutions



Foundations



Buried walls