



**DRAPER**<sup>®</sup>

230V

# WEED BURNER

68696



These instructions accompanying the product are the original instructions. This document is part of the product, keep it for the life of the product passing it on to any subsequent holder of the product. Read all these instructions before assembling, operating or maintaining this product.

This manual has been compiled by Draper Tools describing the purpose for which the product has been designed, and contains all the necessary information to ensure its correct and safe use. By following all the general safety instructions contained in this manual, it will ensure both product and operator safety, together with longer life of the product itself.

All photographs and drawings in this manual are supplied by Draper Tools to help illustrate the operation of the product.

Whilst every effort has been made to ensure the accuracy of information contained in this manual, the Draper Tools policy of continuous improvement determines the right to make modifications without prior warning.

# 1. TITLE PAGE

---

## 1.1 INTRODUCTION:

**USER MANUAL FOR: 230V Weed Burner**

**Stock No: 68696**

**Part No: G/WB2000D**

## 1.2 REVISIONS:

**Date first published December 2018.**

---

---

---

---

As our user manuals are continually updated, users should make sure that they use the very latest version.

**Downloads are available from:** <http://drapertools.com/manuals>

Draper Tools Limited

Hursley Road

Chandler's Ford

Eastleigh

Hampshire

SO53 1YF

UK

**Website:** [drapertools.com](http://drapertools.com)

**Product Helpline:** +44 (0) 23 8049 4344

**General Fax:** +44 (0) 23 8026 0784

## 1.3 UNDERSTANDING THIS MANUALS SAFETY CONTENT:

**WARNING!** – Information that draws attention to the risk of injury or death.

**CAUTION!** – Information that draws attention to the risk of damage to the product or surroundings.

## 1.4 COPYRIGHT © NOTICE:

Copyright © Draper Tools Limited.

Permission is granted to reproduce this publication for personal and educational use only. Commercial copying, redistribution, hiring or lending is prohibited.

No part of this publication may be stored in a retrieval system or transmitted in any other form or means without written permission from Draper Tools Limited.

In all cases this copyright notice must remain intact.

---

## 2. CONTENTS

---

<b>1</b>	<b>TITLE PAGE</b>	
1.1	INTRODUCTION .....	2
1.2	REVISION HISTORY .....	2
1.3	UNDERSTANDING THIS MANUAL .....	2
1.4	COPYRIGHT NOTICE.....	2
<b>2</b>	<b>CONTENTS</b>	
2.1	CONTENTS.....	3
<b>3</b>	<b>WARRANTY</b>	
3.1	WARRANTY.....	4
<b>4</b>	<b>INTRODUCTION</b>	
4.1	SCOPE .....	5
4.2	SPECIFICATION .....	5
4.3	HANDLING AND STORAGE .....	5
<b>5</b>	<b>HEALTH AND SAFETY INFORMATION</b>	
5.1	GENERAL SAFETY INSTRUCTIONS FOR POWER TOOL USE .....	6
5.2	ADDITIONAL SAFETY INSTRUCTIONS FOR WEED BURNER USE .....	7
5.3	RESIDUAL RISK .....	8
5.4	CONNECTION TO THE POWER SUPPLY.....	8
<b>6</b>	<b>TECHNICAL DESCRIPTION</b>	
6.1	IDENTIFICATION .....	9
<b>7</b>	<b>UNPACKING AND CHECKING</b>	
7.1	PACKAGING .....	10
<b>8</b>	<b>PREPARING THE ELECTRIC WEED BURNER</b>	
8.1	ATTACHING THE CONE.....	11
8.2	ATTACHING THE EXTENSION POLE.....	11
8.3	CABLE RETAINER.....	12
<b>9</b>	<b>OPERATING THE ELECTRIC WEED BURNER</b>	
9.1	OPERATION.....	13
9.2	BBQ/CHARCOAL LIGHTER .....	14
9.3	HINTS AND TIPS .....	14
<b>10</b>	<b>MAINTENANCE</b>	
10.1	MAINTENANCE AND PARTS REPLACEMENT .....	15
<b>11</b>	<b>DISPOSAL</b>	
11.1	DISPOSAL.....	16
<b>12</b>	<b>EXPLANATION OF SYMBOLS</b>	
12.1	EXPLANATION OF SYMBOLS .....	17
	<b>DECLARATION OF CONFORMITY</b> .....	ENCLOSED

## 3. WARRANTY

---

### 3.1 WARRANTY

Draper tools have been carefully tested and inspected before shipment and are guaranteed to be free from defective materials and workmanship.

Should the tool develop a fault, please return the complete tool to your nearest distributor or contact:

**Draper Tools Limited, Chandler's Ford, Eastleigh, Hampshire, SO53 1YF. England.**

**Telephone Sales Desk: (023) 8049 4333** or:

**Product Helpline (023) 8049 4344.**

A proof of purchase must be provided.

If upon inspection it is found that the fault occurring is due to defective materials or workmanship, repairs will be carried out free of charge. This warranty period covering labour is 12 months from the date of purchase except where tools are hired out when the warranty period is 90 days from the date of purchase. The warranty is extended to 24 months for parts only. This warranty does not apply to any consumable parts, any type of battery or normal wear and tear, nor does it cover any damage caused by misuse, careless or unsafe handling, alterations, accidents, or repairs attempted or made by any personnel other than the authorised Draper warranty repair agent.

Note: If the tool is found not to be within the terms of warranty, repairs and carriage charges will be quoted and made accordingly.

This warranty applies in lieu of any other warranty expressed or implied and variations of its terms are not authorised.

Your Draper warranty is not effective unless you can produce upon request a dated receipt or invoice to verify your proof of purchase within the warranty period.

Please note that this warranty is an additional benefit and does not affect your statutory rights.

**Draper Tools Limited.**

# 4. INTRODUCTION

---

## 4.1 SCOPE

This weed burner eliminates the use of toxic chemicals and reduces the risk of potential fires; no gas, no flames, no pesticides. The appliance is suitable for the removal of wild growth between paving slabs, on brick-paved areas, on walling, in flowerbeds and in lawns during the growth periods.

Long detachable handle allows comfortable use with the cone head targeting small work area. Any application other than that it was intended for, is considered misuse.

## 4.2 SPECIFICATION

Stock No. ....	68696
Part No. ....	G/WB2000D
Rated voltage .....	230V~50Hz
Rated output .....	2000W
Two heat settings .....	50°C and 600°C
Cable .....	1.7M
Weight .....	1.15kg

## 4.3 HANDLING & STORAGE

- Care must be taken when handling this product.
  - Dropping this power tool could have an effect on its accuracy and could also result in personal injury. This product is not a toy and must be respected.
- Environmental conditions can have a detrimental effect on this product if neglected.
  - Exposure to damp air can gradually corrode components.
  - If the product is unprotected from dust and debris, components will become clogged.
  - If not cleaned and maintained correctly or regularly, the machine will not perform at its best.

## 5. HEALTH AND SAFETY INFORMATION

---

When using any type of power tool there are steps that should be taken to make sure that you, as the user, remain safe.

Common sense and a respect for the tool will help reduce the risk of injury.

### 5.1 GENERAL SAFETY INSTRUCTIONS FOR POWER TOOL USE

#### Warning!

- Read all safety warnings and all instructions. Failure to follow the warnings and instructions may result in electric shock, fire and/or serious injury.
- The term "power tool" in the warnings refers to your mains operated (corded) power tool or battery-operated (cordless) power tool.

**Most important:** You must know how to safely start and stop this machine, especially in an emergency.

**Keep the work area tidy and clean.** Attempting to clear clutter from around the machine during use will reduce your concentration. Mess on the floor creates a trip hazard. Any liquid spilled on the floor could result in you slipping.

**Find a suitable location.** If the machine is bench mounted, the location should provide good natural light or artificial lighting as a replacement. Avoid damp and dusty locations as it will have a negative effect on the machine's performance. If the machine is portable do not expose the tool to rain. In all cases do not operate power tools near any flammable materials.

**Keep bystanders away.** Children, onlookers and passers by must be restricted from entering the work area for their own protection. The barrier must extend a suitable distance from the tool user. Unplug and house all power tools that are not in use. A power tool should never be left unattended while connected to the power supply. They must be housed in a suitable location, away locked up and from children.

**Do not overload or misuse the tool.** All tools are designed for a purpose and are limited to what they are capable of doing. Do not attempt to use a power tool (or adapt it in any way) for an application it is not designed for. Select a tool appropriate for the size of the job. Overloading a tool will result in tool failure and user injury. This covers the use of accessories.

**Dress properly.** Loose clothing, long hair and jewellery are all dangerous because they can become entangled in moving machinery. This can also result in parts of body being pulled into the machine. Clothing should be close fitted, with any long hair tied back and jewellery and neck ties removed. Footwear must be fully enclosed and have a non-slip sole.

**Wear personal protective equipment (PPE).** Dust, noise, vibration and swarf can all be dangerous if not suitably protected against. If the work involving the power tool creates dust or fumes wear a dust mask. Vibration to the hand, caused by operating some tools for longer periods must be protected against. Wear vibration reducing gloves and allow long breaks between uses. Protect against dust and swarf by wearing approved safety goggles or a face shield. These are some of the more common hazards and preventions, however, always find out what hazards are associated with the machine/work process and wear the most suitable protective equipment available.

**Do not breathe contaminated air.** If the work creates dust or fumes connect the machine (if possible) to an extraction system either locally or remotely. Working outdoors can also help if possible.

**Move the machine as instructed.** If the machine is hand held, do not carry it by the power supply cable. If the product is heavy, employ a second or third person to help move it safely or use a mechanical device. Always refer to the instructions for the correct method.

**Do not overreach.** Extending your body too far can result in a loss of balance and you falling. This could be from a height or onto a machine and will result in injury.

**Maintain your tools correctly.** A well maintained tool will do the job safely. Replace any damaged or missing parts immediately with original parts from the manufacturer. As applicable keep blades sharp, moving parts clean, oiled or greased, handles clean and emergency devices working.

## 5. HEALTH AND SAFETY INFORMATION

---

**Wait for the machine to stop.** Unless the machine is fitted with a safety brake, some parts may continue to move due to momentum. Wait for all parts to stop, then unplug it from the power supply before making any adjustments, carrying out maintenance operations or just finishing using the tool.

**Remove and check setting tools.** Some machinery requires the use of additional tools or keys to set, load or adjust the power tool. Before starting the power tool always check to make certain they have been removed and are safely away from the machine.

**Prevent unintentional starting.** Before plugging any machine in to the power supply, make sure the switch is in the OFF position. If the machine is portable, do not hold the machine near the switch and take care when putting the machine down, that nothing can operate the switch.

**Carefully select an extension lead.** Some machines are not suitable for use with extension leads. If the tool is designed for use outdoors, use an extension lead also suitable for that environment. When using an extended lead, select one capable of handling the current (amps) drawn by the machine in use. Fully extend the lead regardless of the distance between the power supply and the tool. Excess current (amps) and a coiled extension lead will both cause the cable to heat up and can result in fire.

**Concentrate and stay alert.** Distractions are likely to cause an accident. Never operate a power tool if you are under the influence of drugs (prescription or otherwise), including alcohol or if you are feeling tired. Being disorientated will result in an accident.

**Have this tool repaired by a qualified person.** This tool is designed to conform to the relevant international and local standards and as such should be maintained and repaired by someone qualified, using only original parts supplied by the manufacturer. This will ensure the tool remains safe to use.

### IMPORTANT

**If using an extension lead, follow the instructions that came with your lead regarding maximum load while cable is wound. If in doubt, ensure that the entire cable is unwound. Using a coiled extension lead will generate heat which could melt the lead and cause a fire.**

### 5.2 ADDITIONAL SAFETY INSTRUCTIONS FOR WEED BURNER USE

NOTE: A FIRE COULD ARISE IF THIS WEED BURNER IS NOT USED WITH CARE.

1. Ensure that the weed burner is switched OFF before connecting to the power supply.
2. Do not use this weed burner as a hair dryer.
3. Do not touch the hot metal cone.
4. Always allow to cool gradually by turning to the lower setting ("1") for 1 minute after each use.
5. Place the weed burner on its standing position after use and allow it to cool down before storing it away.
6. Do not attempt to cool by immersing in water.
7. Do not direct the flow of hot air at persons or animals.
8. Do not hold the metal cone too close to the ground as the air flow will be restricted and may cause the weed burner to overheat. For best results hold the head 10 - 50mm above the target weed.
9. Hold the weed burner in place for approximately 3 seconds until the weed becomes blackened and shrivelled. Larger, more stubborn weeds may need multiple applications.
10. Suitable for outdoor use only.
11. Not suitable for commercial use.
12. Do not use in wet or windy conditions.
13. Always remain a safe distance from evergreens, pine needles, and all conifers. Highly flammable and easily ignited, pine needles are a fire hazard.
14. Never leave the weed burner running whilst unattended.
15. Do not look directly into the metal cone when the machine is switched on.

# 5. HEALTH AND SAFETY INFORMATION

---

## 5.3 RESIDUAL RISK

**Important note:** Although the safety instructions and operating manuals for our tools contain extensive instructions of safe working with power tools, every power tool involves a certain residual risk which can not be completely excluded by safety mechanisms. Power tools must therefore always be operated with caution!

## 5.4 CONNECTION TO THE POWER SUPPLY

**Caution:** Risk of electric shock. Do not open.

This appliance is supplied with a moulded 3 pin mains plug for your safety. The value of the fuse fitted is marked on the pin face of the plug. Should the fuse need replacing, ensure the substitute is of the correct rating, approved to BS1362 and ASTA or BS Kite marked.

ASTA 

BSI 


The fuse cover is removable with a small plain slot screwdriver. Ensure the fuse cover is replaced before attempting to connect the plug to an electrical outlet. If the cover is missing, a replacement must be obtained or the plug replaced with a suitable type.

If a replacement plug is to be fitted this must be carried out by a qualified electrician.

The damaged or incomplete plug, when cut from the cable should be disabled to prevent connection to a live electrical outlet.

This appliance is Class II<sup>†</sup> and is designed for connection to a power supply matching that detailed on the rating label and compatible with the plug fitted.

If an extension lead is required, use an approved and compatible lead rated for this appliance. Follow all the instructions supplied with the extension lead.

<sup>†</sup>*Double insulated* : This product requires no earth connection as supplementary insulation is applied to the basic insulation to protect against electric shock in the event of failure of the basic insulation.

### IMPORTANT

**If using an extension lead, follow the instructions that came with your lead regarding maximum load while cable is wound. If in doubt, ensure that the entire cable is unwound. Using a coiled extension lead will generate heat which could melt the lead and cause a fire.**

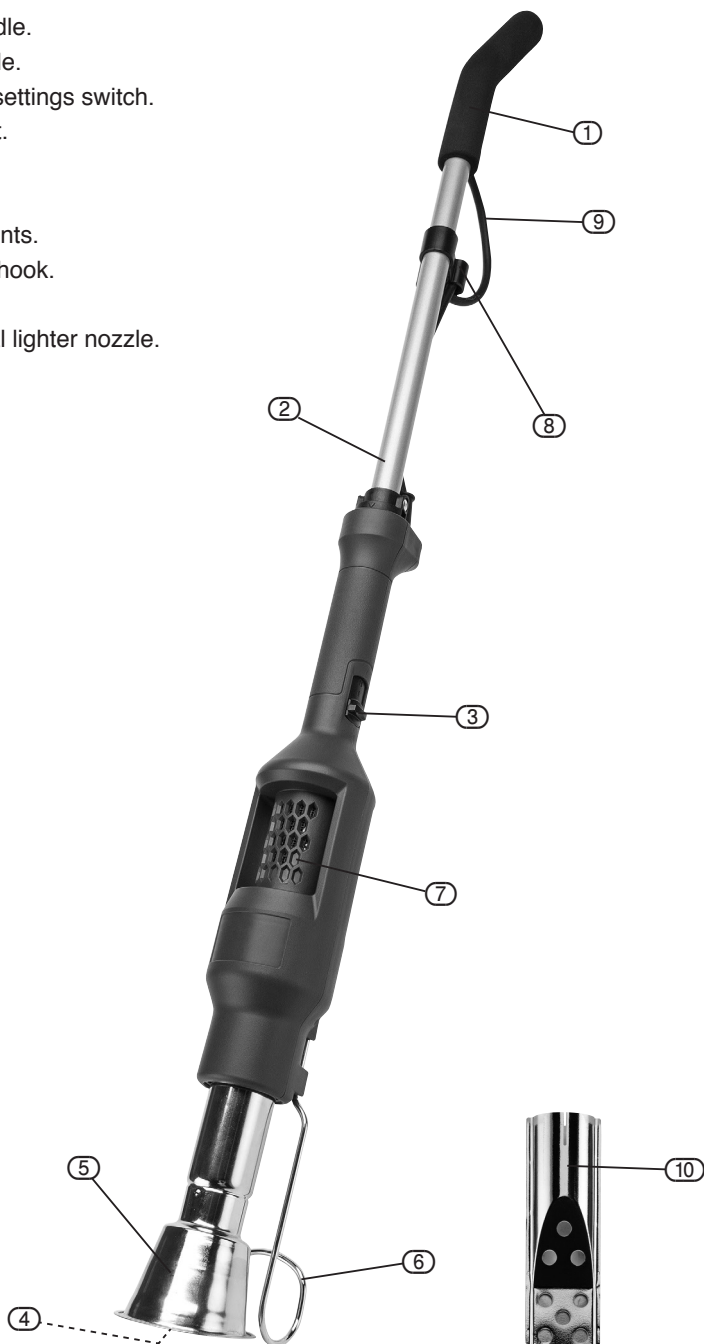


## 6. TECHNICAL DESCRIPTION

---

### 6.1 IDENTIFICATION

- ① Soft grip handle.
- ② Extension pole.
- ③ On/Off/Heat settings switch.
- ④ Hot air output.
- ⑤ Cone.
- ⑥ Safety rest.
- ⑦ Ventilation vents.
- ⑧ Power cable hook.
- ⑨ Power cable.
- ⑩ BBQ/charcoal lighter nozzle.



# 7. UNPACKING AND CHECKING

---

## 7.1 PACKAGING

Carefully remove the product from the packaging and examine it for any sign of damage that may have happened during shipping. If any part is damaged or missing, please contact the Draper Help Line (the telephone number appears on the Title page) and do not attempt to use the product.

The packaging material should be retained at least during the guarantee period in case the machine needs to be returned for repair.

### **Warning!**

- Some of the packaging materials used may be harmful to children. Do not leave any of these materials in the reach of children.
- If any of the packaging is to be thrown away, make sure they are disposed of correctly, according to local regulations.

## 8. PREPARING THE ELECTRIC WEED BURNER

### 8.1 ATTACH THE CONE – FIG.1

Push the cone (5) onto the end of the weed burner, it is designed to be a tight fit.

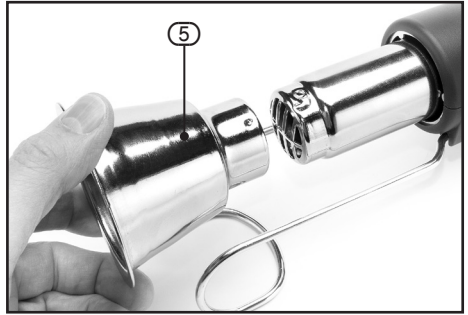


FIG.1

### 8.2 ATTACH THE EXTENSION POLE – FIGS. 2 – 3

Align both the weed burner and the extension pole together so the arrows point at each other and push together. Twist the pole 90° clockwise to lock in place, leaving the arrow pointing at the marker.

To remove extension handle twist 90° counter-clockwise and pull the pole out of the unit.

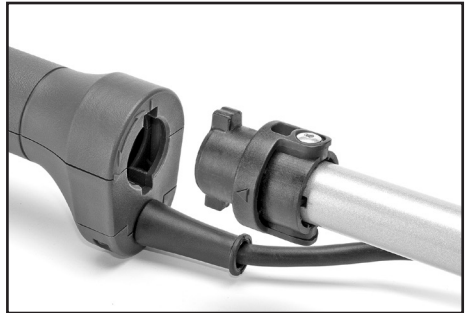


FIG.2



FIG.3

## 8. PREPARING THE ELECTRIC WEED BURNER

### 8.3 CABLE RETAINER – FIGS. 4 – 5

Form a loop in the cable, push through slot in the cable hook (8). Then pull over and hook the cable over the retainer.

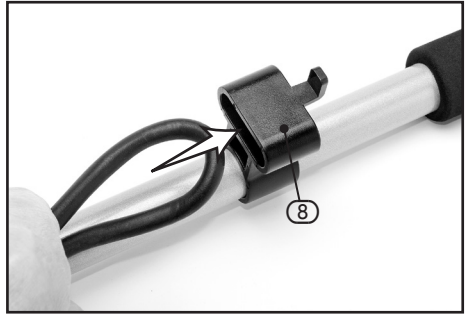


FIG.4

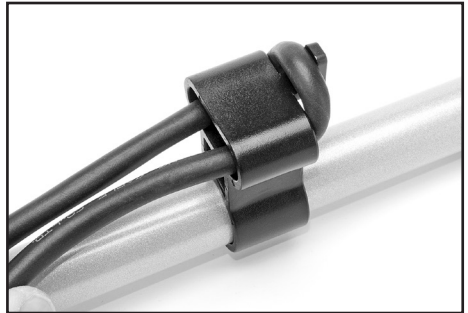


FIG.5

## 9. OPERATING THE ELECTRIC WEED BURNER

### 9.1 OPERATION – FIGS. 6 - 7

Connect the appliance to a power socket (230-240V AC) using an extension cable.

1. Switch the power to setting "2" (full power), it can take 45 seconds to reach operating temperature.
2. Place the nozzle 10 - 50mm above the weed.
3. Hold in place until weeds blacken and shrivel (approx. 3 seconds). Large weeds may need multiple applications.
4. Once finished change switch to "1" for at least a minute to cool the burner slowly.
5. Switch to "0" off position, and rest the burner in a safe position to finish cooling before storing.

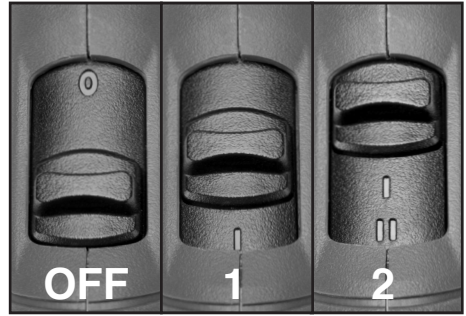


FIG.6



FIG.7

**NOTE:** The weed burner features thermal protection. When the internal temperature gets too high, it will cut off the main heating elements automatically and only leave the auxiliary heating elements working.

Once the thermal protection has cooled down (in around 1-2 minutes), the main heating elements will turn back on automatically. After the machine has been turned off and on again, it will work normally.

## 9. OPERATING THE ELECTRIC WEED BURNER

### 9.2 BBQ/CHARCOAL LIGHTER – FIG. 8

The BBQ and charcoal lighter is always to be used without the extension handle.

1. Attach the BBQ/charcoal lighter nozzle (10) onto the device.
2. Select temperature setting II.
3. Place the nozzle under the coal or wood. Ensure that the device is properly positioned. The stand should be used to firmly support the device in the proper position.
4. Remove the device from the coals or wood as soon as it starts to glow.
5. Blow hot air into the coals or wood from a distance of 5-10cm, until they are burning properly. Doing this will help to avoid damage to the nozzle attachment.
6. Once finished change switch to "1" for at least a minute to cool the burner slowly.
7. Switch to "0" off position, and rest the burner in a safe position to finish cooling before storing.

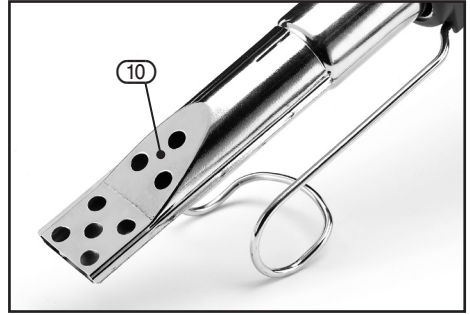


FIG.8

### 9.3 HINTS AND TIPS

- The weed burner is best suited to control small young weeds 2-3inches (50-75mm) in height.
- For best results, any weeds you wish to work on that are bigger than that should be trimmed down to approx. 2 inches (50mm) in height before using the weed burner.
- Do not attempt to burn the plant completely, only the heat is needed. Most weeds will blacken and die completely within 2 or 3 days. Stronger weeds, woody stems and those with deeper routes may require multiple applications.
- The weed burner is not suitable for use on decking.
- Be careful not to use for extended periods over the same area as it may cause damage or become a fire risk.

# 10. MAINTENANCE

---

## 10.1 MAINTENANCE AND PARTS REPLACEMENT

**Note:** Remove the plug from the socket before carrying out adjustment, servicing or maintenance. Regular inspection and cleaning reduces the necessity for maintenance operations and will keep your tool in good working condition.

The motor must be correctly ventilated during tool operation. For this reason avoid blocking the air inlets. After use disconnect the tool from the power supply and vacuum the ventilation slots.

Use a cloth or a brush to clean the housing.

Never use petrol, solvents or cleaning agents that can damage plastic.

If the replacement of the supply cord is necessary, this has to be done by the manufacturer or his agent in order to avoid a safety hazard.

# 11. DISPOSAL

---

## 11.1 DISPOSAL

- At the end of the machine's working life, or when it can no longer be repaired, ensure that it is disposed of according to national regulations.
- Contact your local authority for details of collection schemes in your area.

In all circumstances:

- Do not dispose of power tools with domestic waste.
- Do not incinerate.
- Do not dispose of WEEE\* as unsorted municipal waste.



\* *Waste Electrical & Electronic Equipment.*



# 12. EXPLANATION OF SYMBOLS

---

## 12.1 EXPLANATION OF SYMBOLS



**Do not dispose of WEEE\*  
unsorted municipal waste.**



Class II construction  
(Double insulated).



**Warning!**  
Wear suitable foot protection.



**Warning!**  
Wear suitable eye/face protection.



**Warning!**  
Read the instruction manual.



**Warning!**  
Keep bystanders away.



**Warning!**  
Risk of danger to wildlife.





# CONTACTS

Draper Tools Limited, Hursley Road,  
Chandler's Ford, Eastleigh, Hampshire. SO53 1YF. U.K.

Helpline: (023) 8049 4344

Sales Desk: (023) 8049 4333

Internet: [drapertools.com](http://drapertools.com)

E-mail: [sales@drapertools.com](mailto:sales@drapertools.com)

General Enquiries: (023) 8026 6355

Service/Warranty Repair Agent:

For aftersales servicing or warranty repairs, please contact the  
Draper Tools Helpline for details of an agent in your local area.

YOUR DRAPER STOCKIST

TACM1218

©Published by Draper Tools Limited.

No part of this publication may be reproduced, stored in a retrieval system or transmitted in any form or by any means, electronic, mechanical photocopying, recording or otherwise without prior permission in writing from Draper Tools Ltd.