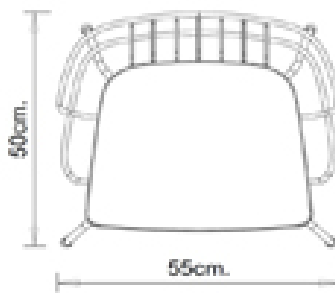
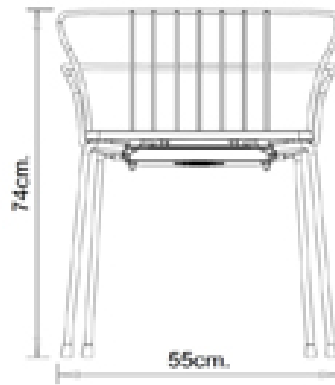


## Flint 535-A

### FLINT COLLECTION:

Flint 535-A, Flint 535-AM, Flint 535-B,  
Flint 535-BM, Flint 549, Flint 549M,



Armchair, design Marc Sadler: 4-leg armchair with steel frame and backrest, polypropylene seat.

Special Edition Flint armchair: frame in Brass or bronze chrome steel and seat in Iroko wood or leather

#### STACKABLE

4

#### WEIGHT

6.5 Kg

#### PACK

0,39 m<sup>3</sup>

#### PIECES PER BOX

4

## FINISHES SEATING

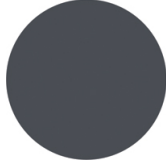
### PP POLYPROPYLENE



RAL 9010 Pure white



PANTONE 402 C Turtle-dove



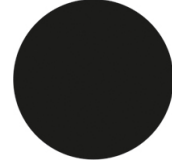
RAL 7016 Anthracite grey



RAL 3003 Ruby red



PANTONE 497 C Mocha



RAL 6005 Moss green

### CU LEATHER



Black



Brick red



dark brown



Bordeaux

### LE WOOD



Iroko

## FRAMES

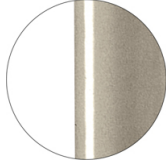
### AC STEEL



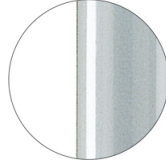
RAL 9016  
VR Traffic white



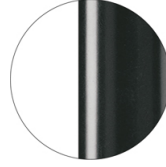
RAL 9010  
VR Pure white



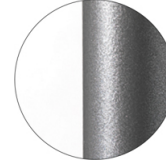
PANTONE 402 C  
VR Turtle-dove



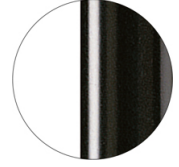
RAL 9006  
VR White aluminium



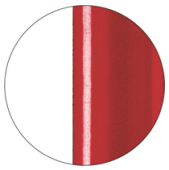
RAL 7016  
VR Anthracite grey



VR Pewter



RAL 9005  
VR Jet black



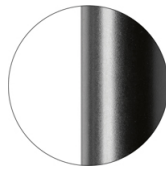
RAL 3003  
VR Ruby red



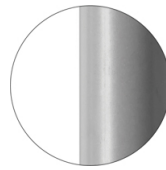
RAL 8017  
VR Chocolate brown



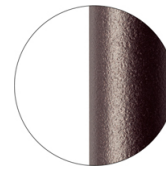
RAL 6005  
VR Moss green



RAL 9005  
VR Matt Jet Black



RAL 7037  
VR Matt Dusty grey



VR Rough metallic  
bronze



CR Chrome



CR X Brass chrome



CR X Burnished chrome

## CERTIFICATIONS

- > UNI/EN 16139:2013 - Par.4.1. Generale. Par. 4.2. Cesoiamento (14/04/15)
- > UNI/EN 16139:2013 - Par.4.3. Stabilità (14/04/15) > UNI/EN 16139:2013 - Prova 1. Carico statico sedile e schienale: 2-Uso estremo (14/04/15)
- > UNI/EN 16139:2013 - Prova 2. Carico statico sul fronte anteriore: 2-Uso estremo (14/04/15) > UNI/EN 16139:2013 - Prova 3. Carico verticale sullo schienale: 2-Uso estremo (14/04/15)
- > UNI/EN 16139:2013 - Prova 5. Carico statico laterale sui braccioli: 2-Uso estremo (14/04/15)
- > UNI/EN 16139:2013 - Prova 6. Carico statico verticale verso il basso sui braccioli: 2-Uso estremo (14/04/15)
- > UNI/EN 16139:2013 - Prova 8. Prova di fatica sedile e schienale: 2-Uso estremo (15/07/15)

## USES

coffee & restaurants, retail,

## Flint 535-AM



### FLINT COLLECTION:

Flint 535-A, Flint 535-AM, Flint 535-B, Flint 535-BM, Flint 549,  
Flint 549M,



Armchair with 4 legs steel frame and backrest, upholstered seat.

#### WEIGHT

6,7 kg

#### PACK

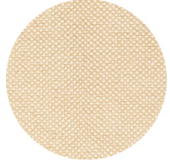
0,33 m<sup>3</sup>

#### PIECES PER BOX

2

## FINISHES SEATING

### TE FABRICS



Sawana Davis  
+ 24 colours



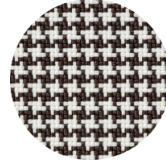
Citadel Camira  
+ 16 colours



Medley Gabriel  
+ 14 colours



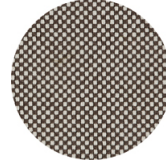
Inca Abitex  
+ 15 colours



Go-Couture Gabriel  
+ 8 colours



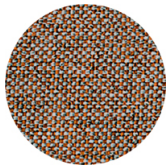
Crazy Flukso  
+ 7 colours



Go-Check Gabriel  
+ 13 colours



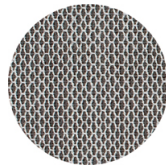
Xtreme Camira  
+ 16 colours



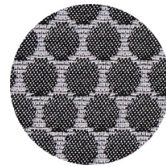
Rivet Camira  
+ 12 colours



Valencia Spradling  
+ 17 colours



Criss Cross Gabriel  
+ 19 colours



Bubble Flukso  
+ 9 colours



Europost 2 Gabriel  
+ 16 colours



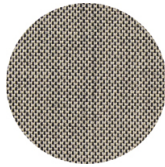
Fame Gabriel  
+ 23 colours



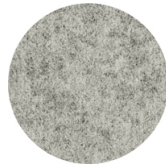
Parotega NF  
Skai Hornschuch  
+ 8 colours



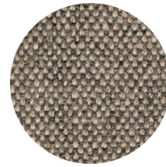
Superb Flukso  
+ 13 colours



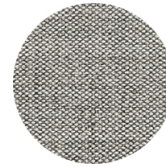
Balta Vescom  
+ 12 colours



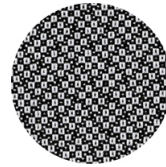
Blazer Camira  
+ 25 colours



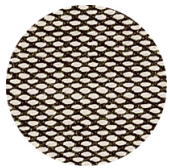
Main line flax Camira  
+ 13 colours



Remix 2 Kvadrat  
+ 18 colours



Revive 2 Kvadrat  
+ 7 colours



Steelcut trio 3 Kvadrat  
+ 20 colours

## FRAMES

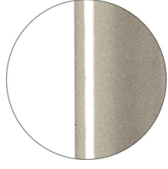
### AC STEEL



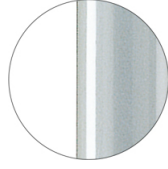
RAL 9016  
VR Traffic white



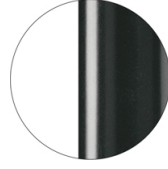
RAL 9010  
VR Pure white



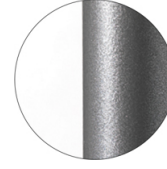
PANTONE 402 C  
VR Turtle-dove



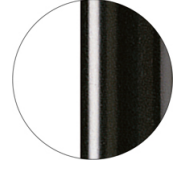
RAL 9006  
VR White aluminium



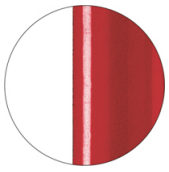
RAL 7016  
VR Anthracite grey



VR Pewter



RAL 9005  
VR Jet black



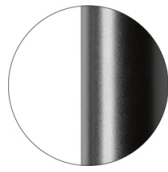
RAL 3003  
VR Ruby red



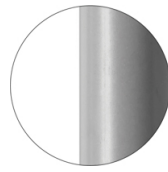
RAL 8017  
VR Chocolate brown



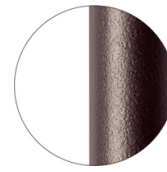
RAL 6005  
VR Moss green



RAL 9005  
VR Matt Jet Black



RAL 7037  
VR Matt Dusty grey



VR Rough metallic  
bronze



CR Chrome



CR X Brass chrome



CR X Burnished chrome

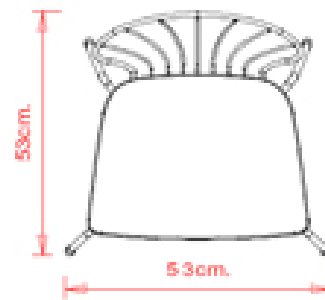
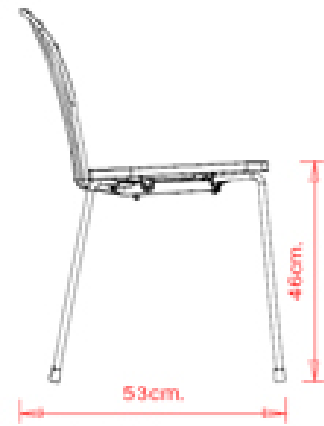
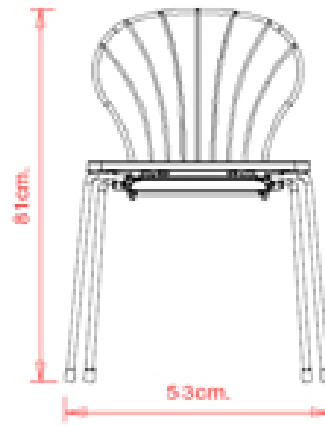
## USES

coffee & restaurants, retail,

## Flint 535-B

### FLINT COLLECTION:

Flint 535-A, Flint 535-AM, Flint 535-B,  
Flint 535-BM, Flint 549, Flint 549M,



Chair design Marc Sadler with polypropylene seat, backrest and 4-leg steel frame.

#### STACKABLE

4

#### WEIGHT

5,3 Kg

#### PACK

0,39 m<sub>3</sub>

#### PIECES PER BOX

4

### FINISHES SEATING

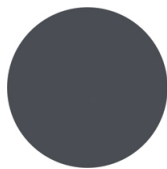
#### PP POLYPROPYLENE



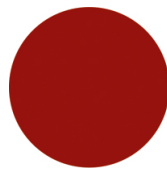
RAL 9010 Pure white



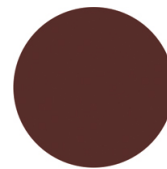
PANTONE 402 C Turtle-dove



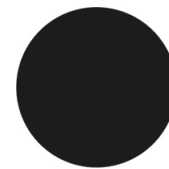
RAL 7016 Anthracite grey



RAL 3003 Ruby red



PANTONE 497 C Mocha



RAL 6005 Moss green

## FRAMES

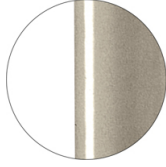
### AC STEEL



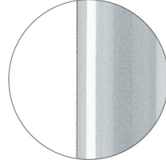
RAL 9016  
VR Traffic white



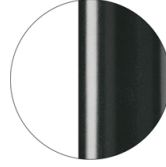
RAL 9010  
VR Pure white



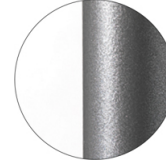
PANTONE 402 C  
VR Turtle-dove



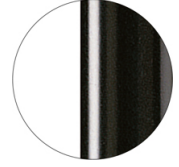
RAL 9006  
VR White aluminium



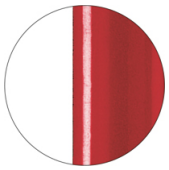
RAL 7016  
VR Anthracite grey



VR Pewter



RAL 9005  
VR Jet black



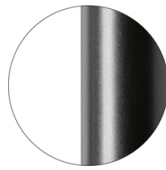
RAL 3003  
VR Ruby red



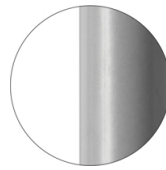
RAL 8017  
VR Chocolate brown



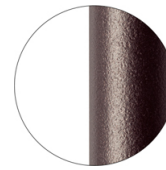
RAL 6005  
VR Moss green



RAL 9005  
VR Matt Jet Black



RAL 7037  
VR Matt Dusty grey



VR Rough metallic  
bronze



CR Chrome



CR X Brass chrome



CR X Burnished chrome

## CERTIFICATIONS

- > UNI/EN 16139:2013 - Par.4.1. Generale. Par.4.2. Cesoiamento (07/07/15)
- > UNI/EN 16139:2013 - Par.4.3. Stabilità (07/07/15) > UNI/EN 16139:2013 - Prova 1. Carico statico sedile e schienale: 2-Uso estremo (07/07/15)
- > UNI/EN 16139:2013 - Prova 2. Carico statico sul fronte anteriore: 2-Uso estremo (07/07/15)
- > UNI/EN 16139:2013 - Prova 3. Carico verticale sullo schienale: 2-Uso estremo (07/07/15)
- > UNI/EN 16139:2013 - Prova 8. Prova di fatica sedile e schienale: 2-Uso estremo (07/07/15)
- > UNI/EN 16139:2013 - Prova 9. Prova di fatica sul bordo anteriore: 2-Uso estremo (07/07/15)

## USES

coffee & restaurants, retail,



## Flint 535-BM



### FLINT COLLECTION:

Flint 535-A, Flint 535-AM, Flint 535-B, Flint 535-BM, Flint 549,  
Flint 549M,



Chair with 4 legs steel frame and backrest, upholstered seat.

#### WEIGHT

5,5 kg

#### PACK

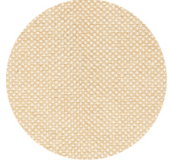
0,33 m<sup>3</sup>

#### PIECES PER BOX

2

## FINISHES SEATING

### TE FABRICS



Sawana Davis  
+ 24 colours



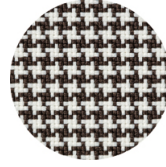
Citadel Camira  
+ 16 colours



Medley Gabriel  
+ 14 colours



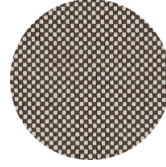
Inca Abitex  
+ 15 colours



Go-Couture Gabriel  
+ 8 colours



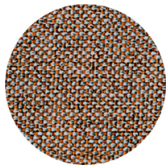
Crazy Flukso  
+ 7 colours



Go-Check Gabriel  
+ 13 colours



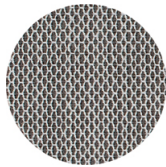
Xtreme Camira  
+ 16 colours



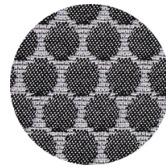
Rivet Camira  
+ 12 colours



Valencia Spradling  
+ 17 colours



Criss Cross Gabriel  
+ 19 colours



Bubble Flukso  
+ 9 colours



Europost 2 Gabriel  
+ 16 colours



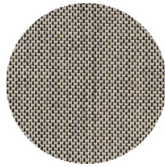
Fame Gabriel  
+ 23 colours



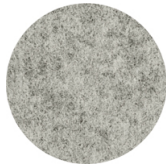
Parotega NF  
Skai Hornschuch  
+ 8 colours



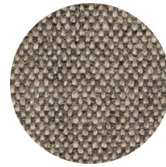
Superb Flukso  
+ 13 colours



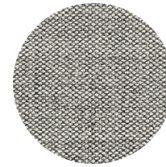
Balta Vescom  
+ 12 colours



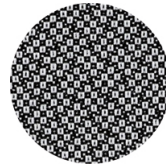
Blazer Camira  
+ 25 colours



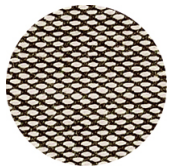
Main line flax Camira  
+ 13 colours



Remix 2 Kvadrat  
+ 18 colours



Revive 2 Kvadrat  
+ 7 colours



Steelcut trio 3 Kvadrat  
+ 20 colours

## FRAMES

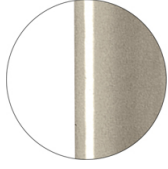
### AC STEEL



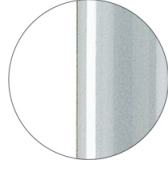
RAL 9016  
VR Traffic white



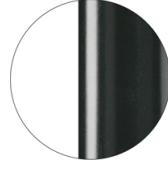
RAL 9010  
VR Pure white



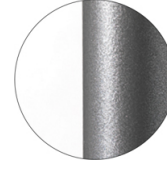
PANTONE 402 C  
VR Turtle-dove



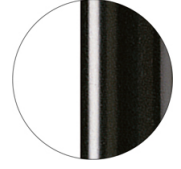
RAL 9006  
VR White aluminium



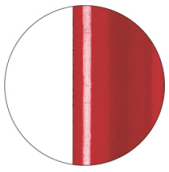
RAL 7016  
VR Anthracite grey



VR Pewter



RAL 9005  
VR Jet black



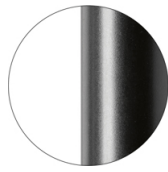
RAL 3003  
VR Ruby red



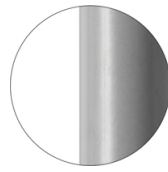
RAL 8017  
VR Chocolate brown



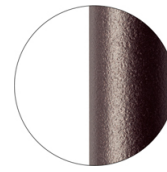
RAL 6005  
VR Moss green



RAL 9005  
VR Matt Jet Black



RAL 7037  
VR Matt Dusty grey



VR Rough metallic  
bronze



CR Chrome



CR X Brass chrome



CR X Burnished chrome

## USES

coffee & restaurants, retail,

## Flint 549



### FLINT COLLECTION:

Flint 535-A, Flint 535-AM, Flint 535-B,  
Flint 535-BM, Flint 549, Flint 549M,



Stool, design Marc Sadler. 4-leg stool with steel frame, polypropylene, leather or iroko seat.

#### STACKABLE

4

#### WEIGHT

5 kg

#### PACK

0,33 m<sup>3</sup>

#### PIECES PER BOX

2

## FINISHES SEATING

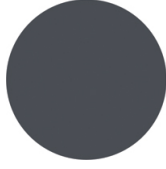
### PP POLYPROPYLENE



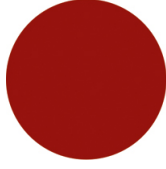
RAL 9010 Pure white



PANTONE 402 C Turtle-dove



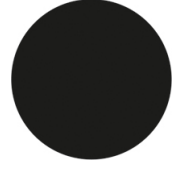
RAL 7016 Anthracite grey



RAL 3003 Ruby red



PANTONE 497 C Mocha



RAL 6005 Moss green

### CU LEATHER



Black



Brick red



dark brown



Bordeaux

### LE WOOD



Iroko

## FRAMES

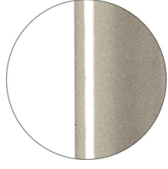
### AC STEEL



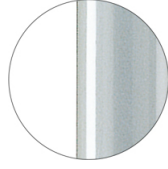
RAL 9016  
VR Traffic white



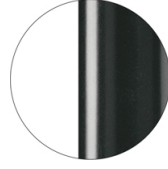
RAL 9010  
VR Pure white



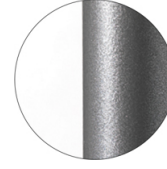
PANTONE 402 C  
VR Turtle-dove



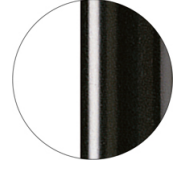
RAL 9006  
VR White aluminium



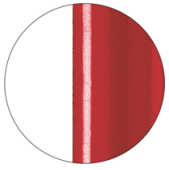
RAL 7016  
VR Anthracite grey



VR Pewter



RAL 9005  
VR Jet black



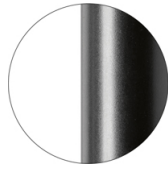
RAL 3003  
VR Ruby red



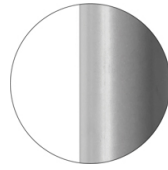
RAL 8017  
VR Chocolate brown



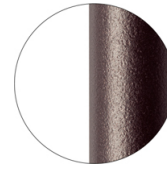
RAL 6005  
VR Moss green



RAL 9005  
VR Matt Jet Black



RAL 7037  
VR Matt Dusty grey



VR Rough metallic  
bronze



CR Chrome



CR X Brass chrome



CR X Burnished chrome

## USES

coffee & restaurants, retail,

## Flint 549M



FLINT COLLECTION:

Flint 535-A, Flint 535-AM, Flint 535-B,  
Flint 535-BM, Flint 549, Flint 549M,



Stool, design Marc Sadler. 4-leg stool with steel frame and upholstered seat.

**STACKABLE**

4

**WEIGHT**

5 Kg

**PACK**

0,33 m<sup>3</sup>

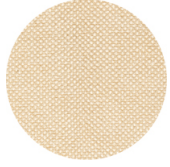
**PIECES PER BOX**

2



## FINISHES SEATING

### TE FABRICS



Sawana Davis  
+ 24 colours



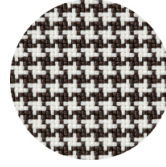
Citadel Camira  
+ 16 colours



Medley Gabriel  
+ 14 colours



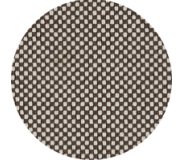
Inca Abitex  
+ 15 colours



Go-Couture Gabriel  
+ 8 colours



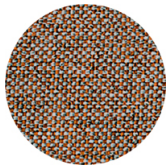
Crazy Flukso  
+ 7 colours



Go-Check Gabriel  
+ 13 colours



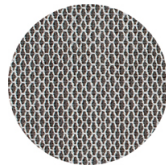
Xtreme Camira  
+ 16 colours



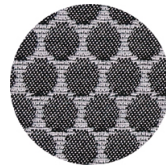
Rivet Camira  
+ 12 colours



Valencia Spradling  
+ 17 colours



Criss Cross Gabriel  
+ 19 colours



Bubble Flukso  
+ 9 colours



Europost 2 Gabriel  
+ 16 colours



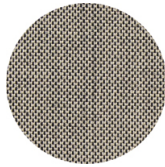
Fame Gabriel  
+ 23 colours



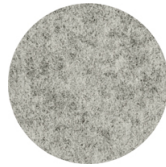
Parotega NF  
Skai Hornschuch  
+ 8 colours



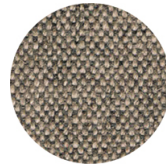
Superb Flukso  
+ 13 colours



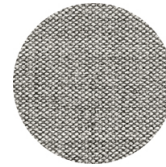
Balta Vescom  
+ 12 colours



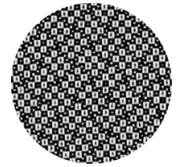
Blazer Camira  
+ 25 colours



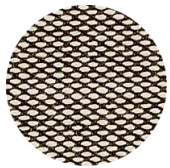
Main line flax Camira  
+ 13 colours



Remix 2 Kvadrat  
+ 18 colours



Revive 2 Kvadrat  
+ 7 colours



Steelcut trio 3 Kvadrat  
+ 20 colours



## FRAMES

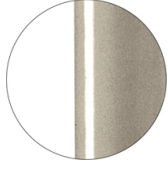
### AC STEEL



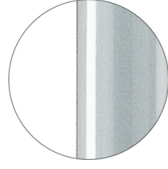
RAL 9016  
VR Traffic white



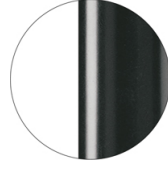
RAL 9010  
VR Pure white



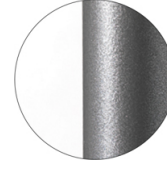
PANTONE 402 C  
VR Turtle-dove



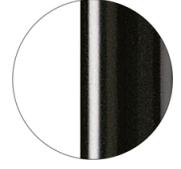
RAL 9006  
VR White aluminium



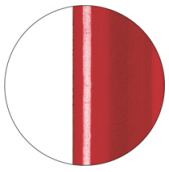
RAL 7016  
VR Anthracite grey



VR Pewter



RAL 9005  
VR Jet black



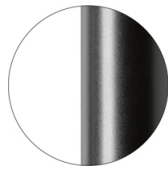
RAL 3003  
VR Ruby red



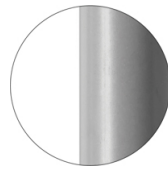
RAL 8017  
VR Chocolate brown



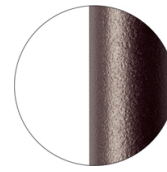
RAL 6005  
VR Moss green



RAL 9005  
VR Matt Jet Black



RAL 7037  
VR Matt Dusty grey



VR Rough metallic  
bronze



CR Chrome



CR X Brass chrome



CR X Burnished chrome

## USES

coffee & restaurants, retail,