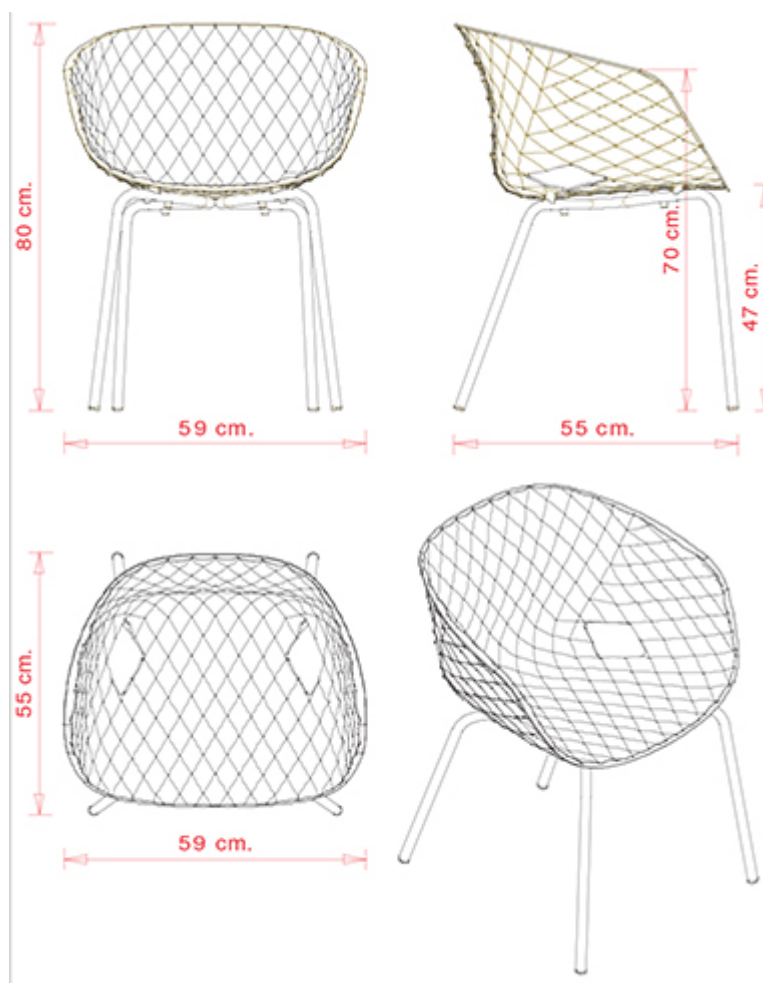


Uni-Ka 594

UNI-KA COLLECTION:

Uni-Ka 594, Uni-Ka 594M, Uni-Ka 595, Uni-Ka 595M, Uni-Ka 596, Uni-Ka 596M, Uni-Ka 597-DP, Uni-Ka 597-DR, Uni-Ka 597M-DP, Uni-Ka 597M-DR, Uni-Ka 598, Uni-Ka 598M, Uni-Ka 599M, Uni-Ka 599, Uni-Ka 600, Uni-Ka 600M, Uni-Ka 601, Uni-ka 601M, Uni-Ka 601, Uni-Ka 604M,



FAUTEUIL DESIGN:

Fauteuil avec châssis en acier 4 pieds et coque en polypropylène.

EMPILABLE

4

POIDS

6,4 kg

EMBALLAGE

0,42 m³

PIÈCES PAR CARTON

4

FINITIONS SIÈGES

PP POLYPROPYLÈNE



RAL 9016 Blanc
signalisation
≡



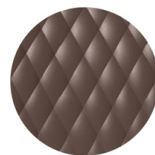
RAL 3000 Rouge feu
≡



RAL 7016 Gris anthracite
≡



RAL 2003 Orangé
pastel
≡



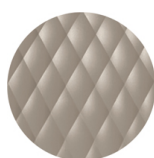
NCS S7005-Y50R
Cacao
≡



RAL 9005 Noir foncé
≡



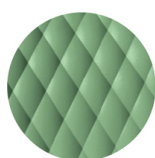
PANTONE 380 C
Vert boss
≡



NCS S4005-Y50R Gris
tourterelle
≡



PANTONE 18-1438
Marsala
≡



RAL 6021 Vert pâle
≡

PIÈTEMENTS

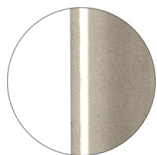
AC ACIER



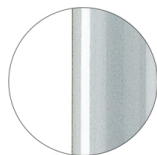
RAL 9016
VR Blanc signalisation
☀



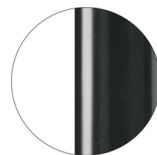
RAL 9010
VR Blanc pur
☀



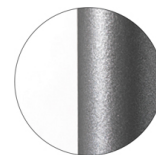
PANTONE 402 C
VR Gris tourterelle
☀



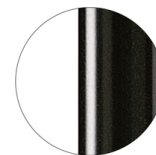
RAL 9006
VR Aluminium blanc
☀



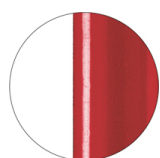
RAL 7016
VR Gris anthracite
☀



VR Etain
☀



RAL 9005
VR Noir foncé
☀



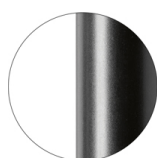
RAL 3003
VR Rouge rubis
☀



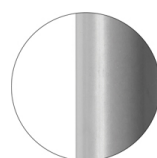
RAL 8017
VR Brun chocolat
☀



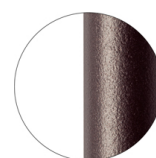
RAL 6005
VR Vert mousse
☀



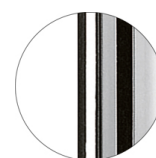
RAL 9005
VR Noir foncé opaque
☀



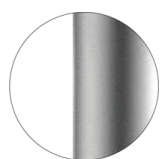
RAL 7037
VR Gris poussière opaque
☀



VR Bronze métallique texturé
☀



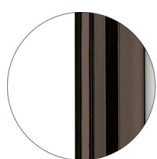
CR Chromé



CR S Chromé satiné



CR X Chromé laiton



CR X Chromé noir

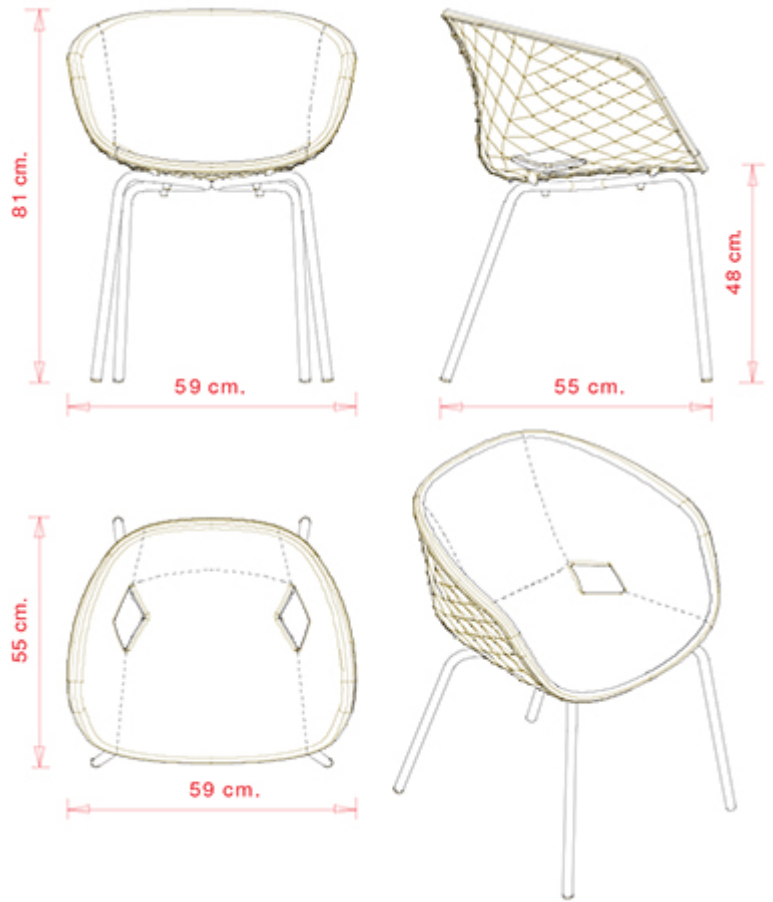
CERTIFICATIONS

- > ANSI/BIFMA X5.1-2011 - Par.11. Proves di fatica sulla seduta (24/01/14)
- > ANSI/BIFMA X5.1-2011 - Par.13. Sforzo statico verticale sui braccioli (27/05/14)
- > ANSI/BIFMA X5.1-2011 - Par.14. Sforzo statico orizzontale sui braccioli (27/05/14)
- > ANSI/BIFMA X5.1-2011 - Par.16. Proves di fatica sullo schienale (24/01/14)
- > ANSI/BIFMA X5.1-2011 - Par.21. Prova di fatica sui braccioli (27/05/14)
- > ANSI/BIFMA X5.1-2011 - Par.6. Sforzo statico sullo schienale (24/01/14)
- > ANSI/BIFMA X5.1-2011 - Par.8. Caduta di un peso (24/01/14)
- > UNI/EN 16139:2013 - Par.4.1. Generale. 4.2 Cesoiamento (19/03/14)
- > UNI/EN 16139:2013 - Par.4.3. Stabilità (19/03/14) > UNI/EN 16139:2013 - Par.7. Informazioni per l'uso (19/03/14)
- > UNI/EN 16139:2013 - Prova 1. Carico statico sedile e schienale: 2-Uso estremo (19/03/14)
- > UNI/EN 16139:2013 - Prova 10. Prova di fatica dei braccioli: 2-Uso estremo (19/03/14)
- > UNI/EN 16139:2013 - Prova 12. Carico statico gambe anteriori: 2-Uso estremo (19/03/14)
- > UNI/EN 16139:2013 - Prova 13. Carico statico gambe laterali: 2-Uso estremo (19/03/14)
- > UNI/EN 16139:2013 - Prova 14. Prova di urto sul sedile: 2-Uso estremo (19/03/14)
- > UNI/EN 16139:2013 - Prova 15. Prova di urto sullo schienale: 2-Uso estremo (19/03/14)
- > UNI/EN 16139:2013 - Prova 16. Prova di urto sul bracciolo: 2-Uso estremo (19/03/14)
- > UNI/EN 16139:2013 - Prova 2. Carico statico sul fronte anteriore: 2-Uso estremo (19/03/14)
- > UNI/EN 16139:2013 - Prova 3. Carico verticale sullo schienale: 2-Uso estremo (19/03/14)
- > UNI/EN 16139:2013 - Prova 5. Carico statico laterale sui braccioli: 2-Uso estremo (19/03/14)
- > UNI/EN 16139:2013 - Prova 6. Carico statico verticale verso il basso sui braccioli: 2-Uso estremo (19/03/14)
- > UNI/EN 16139:2013 - Prova 7. Carico statico verticale verso l'alto sui braccioli: 2-Uso estremo (19/03/14)
- > UNI/EN 16139:2013 - Prova 8. Prova di fatica sedile e schienale: 2-Uso estremo (19/03/14)
- > UNI/EN 16139:2013 - Prova 9. Prova di fatica sul bordo anteriore: 2-Uso estremo (19/03/14)

Uni-Ka 594M

UNI-KA COLLECTION:

Uni-Ka 594, Uni-Ka 594M, Uni-Ka 595, Uni-Ka 595M, Uni-Ka 596, Uni-Ka 596M, Uni-Ka 597-DP, Uni-Ka 597-DR, Uni-Ka 597M-DP, Uni-Ka 597M-DR, Uni-Ka 598, Uni-Ka 598M, Uni-Ka 599M, Uni-Ka 599, Uni-Ka 600, Uni-Ka 600M, Uni-Ka 601, Uni-ka 601M, Uni-Ka 601, Uni-Ka 604M,



FAUTEUIL DESIGN:

Fauteuil avec châssis en acier 4 pieds et coque en polypropylène rembourrée.

POIDS

9,3 Kg

EMBALLAGE

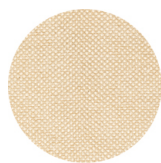
0,34 m³

PIÈCES PAR CARTON

1

FINITIONS SIÈGES

TE TISSUS



Sawana Davis
+ 24 couleurs



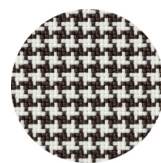
Citadel Camira
+ 16 couleurs



Inca Abitex
+ 15 couleurs



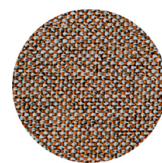
Medley Gabriel
+ 14 couleurs



Go-Couture Gabriel
+ 8 couleurs



Crazy Flukso
+ 7 couleurs



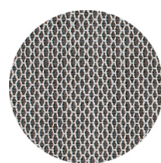
Rivet Camira
+ 12 couleurs



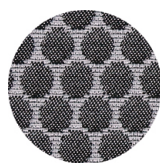
Xtreme Camira
+ 16 couleurs



Valencia Spradling
+ 17 couleurs



Criss Cross Gabriel
+ 19 couleurs



Bubble Flukso
+ 9 couleurs



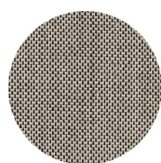
Europost 2 Gabriel
+ 16 couleurs



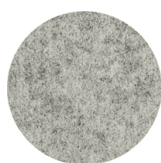
Fame Gabriel
+ 23 couleurs



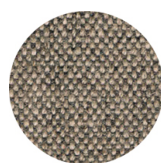
Parotega NF
Skai Hornschuch
+ 8 couleurs



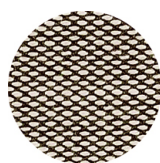
Balta Vescom
+ 12 couleurs



Blazer Camira
+ 25 couleurs



Main line flax Camira
+ 13 couleurs



Steelcut trio 3
Kvadrat
+ 20 couleurs

PP POLYPROPYLÈNE



RAL 9016 Blanc
signalisation
≡



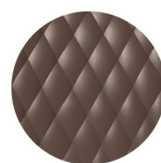
RAL 3000 Rouge feu
≡



RAL 7016 Gris
anthracite
≡



RAL 2003 Orangé
pastel
≡



NCS S7005-Y50R
Cacao
≡



RAL 9005 Noir foncé
≡



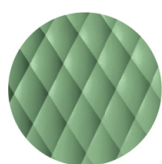
PANTONE 380 C
Vert boss
≡



NCS S4005-Y50R Gris
tourterelle
≡



PANTONE 18-1438
Marsala
≡



RAL 6021 Vert pâle
≡

PIÈTEMENTS

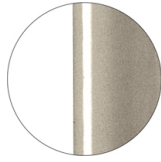
AC ACIER



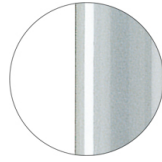
RAL 9016
VR Blanc signalisation
☀



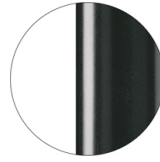
RAL 9010
VR Blanc pur
☀



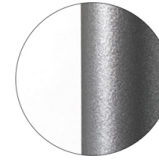
PANTONE 402 C
VR Gris tourterelle
☀



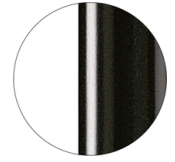
RAL 9006
VR Aluminium blanc
☀



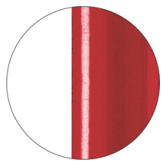
RAL 7016
VR Gris anthracite
☀



VR Etain
☀



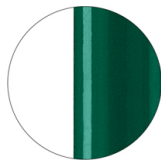
RAL 9005
VR Noir foncé
☀



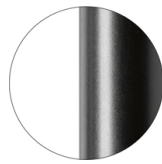
RAL 3003
VR Rouge rubis
☀



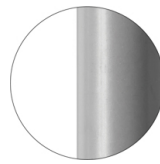
RAL 8017
VR Brun chocolat
☀



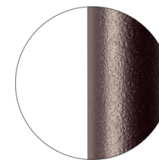
RAL 6005
VR Vert mousse
☀



RAL 9005
VR Noir foncé opaque
☀



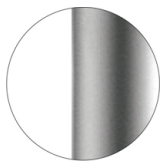
RAL 7037
VR Gris poussière
opaque
☀



VR Bronze métallique
texturé
☀



CR Chromé



CR S Chromé satiné



CR X Chromé laiton

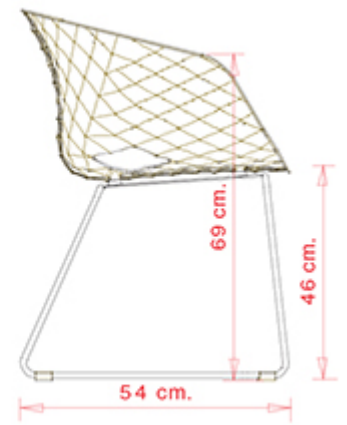


CR X Chromé noir

Uni-Ka 595

UNI-KA COLLECTION:

Uni-Ka 594, Uni-Ka 594M, Uni-Ka 595, Uni-Ka 595M, Uni-Ka 596, Uni-Ka 596M, Uni-Ka 597-DP, Uni-Ka 597-DR, Uni-Ka 597M-DP, Uni-Ka 597M-DR, Uni-Ka 598, Uni-Ka 598M, Uni-Ka 599M, Uni-Ka 599, Uni-Ka 600, Uni-Ka 600M, Uni-Ka 601, Uni-ka 601M, Uni-Ka 601, Uni-Ka 604M,



FAUTEUIL DESIGN:

Fauteuil avec châssis pied luge en fil d'acier. Coque en polypropylène.

POIDS

7,6 kg

EMBALLAGE

0,34 m³

PIÈCES PAR CARTON

1

FINITIONS SIÈGES

PP POLYPROPYLÈNE 



RAL 9016 Blanc
signalisation



RAL 3000 Rouge feu



RAL 7016 Gris
anthracite



RAL 2003 Orangé
pastel



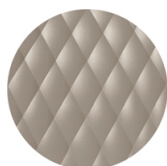
NCS S7005-Y50R
Cacao



RAL 9005 Noir foncé



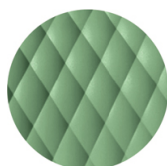
PANTONE 380 C
Vert boss



NCS S4005-Y50R Gris
tourterelle



PANTONE 18-1438
Marsala



RAL 6021 Vert pâle



PIÈTEMENTS

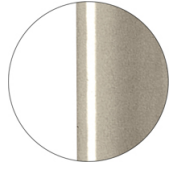
AC ACIER



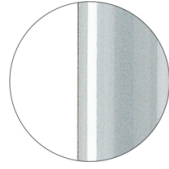
RAL 9016
VR Blanc signalisation
☀



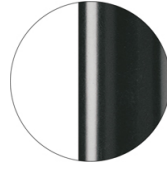
RAL 9010
VR Blanc pur
☀



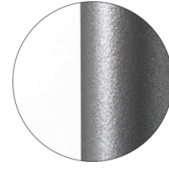
PANTONE 402 C
VR Gris tourterelle
☀



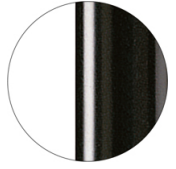
RAL 9006
VR Aluminium blanc
☀



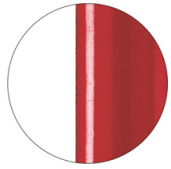
RAL 7016
VR Gris anthracite
☀



VR Etain
☀



RAL 9005
VR Noir foncé
☀



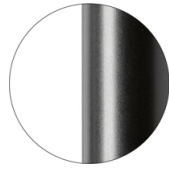
RAL 3003
VR Rouge rubis
☀



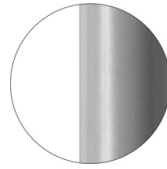
RAL 8017
VR Brun chocolat
☀



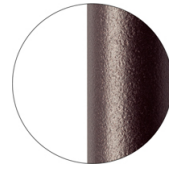
RAL 6005
VR Vert mousse
☀



RAL 9005
VR Noir foncé opaque
☀



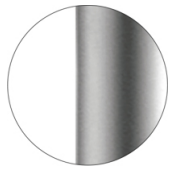
RAL 7037
VR Gris poussière opaque
☀



VR Bronze métallique
texturé
☀



CR Chromé



CR S Chromé satiné

CERTIFICATIONS

> UNI/EN 16139:2013 - Par.6. Prova 8. Prova di fatica sedile e schienale: 2-Usò estremo (20/06/16)

Uni-Ka 595M

UNI-KA COLLECTION:

Uni-Ka 594, Uni-Ka 594M, Uni-Ka 595, Uni-Ka 595M, Uni-Ka 596, Uni-Ka 596M, Uni-Ka 597-DP, Uni-Ka 597-DR, Uni-Ka 597M-DP, Uni-Ka 597M-DR, Uni-Ka 598, Uni-Ka 598M, Uni-Ka 599M, Uni-Ka 599, Uni-Ka 600, Uni-Ka 600M, Uni-Ka 601, Uni-Ka 601M, Uni-Ka 601, Uni-Ka 604M,



FAUTEUIL DESIGN:

Fauteuil avec châssis pied luge en fil d'acier. Coque en polypropylène rembourrée.

POIDS

10,5 Kg

EMBALLAGE

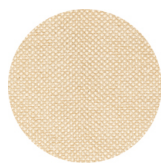
0,34 m³

PIÈCES PAR CARTON

1

FINITIONS SIÈGES

TE TISSUS



Sawana Davis
+ 24 couleurs



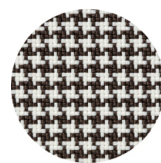
Citadel Camira
+ 16 couleurs



Inca Abitex
+ 15 couleurs



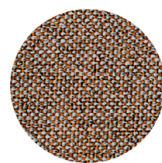
Medley Gabriel
+ 14 couleurs



Go-Couture Gabriel
+ 8 couleurs



Crazy Flukso
+ 7 couleurs



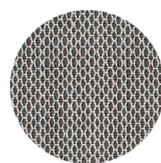
Rivet Camira
+ 12 couleurs



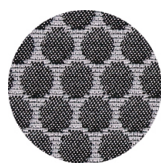
Xtreme Camira
+ 16 couleurs



Valencia Spradling
+ 17 couleurs



Criss Cross Gabriel
+ 19 couleurs



Bubble Flukso
+ 9 couleurs



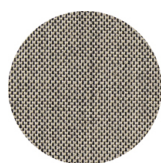
Europost 2 Gabriel
+ 16 couleurs



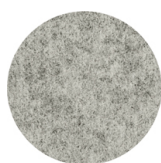
Fame Gabriel
+ 23 couleurs



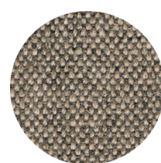
Parotega NF
Skai Hornschuch
+ 8 couleurs



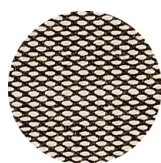
Balta Vescom
+ 12 couleurs



Blazer Camira
+ 25 couleurs



Main line flax Camira
+ 13 couleurs



Steelcut trio 3
Kvadrat
+ 20 couleurs

PP POLYPROPYLÈNE



RAL 9016 Blanc
signalisation
≡



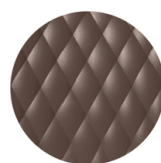
RAL 3000 Rouge feu
≡



RAL 7016 Gris
anthracite
≡



RAL 2003 Orangé
pastel
≡



NCS S7005-Y50R
Cacao
≡



RAL 9005 Noir foncé
≡



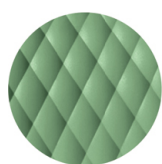
PANTONE 380 C
Vert boss
≡



NCS S4005-Y50R Gris
tourterelle
≡



PANTONE 18-1438
Marsala
≡



RAL 6021 Vert pâle
≡

PIÈTEMENTS

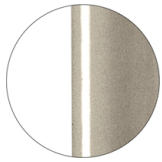
AC ACIER



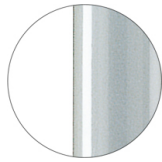
RAL 9016
VR Blanc signalisation
☀



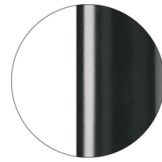
RAL 9010
VR Blanc pur
☀



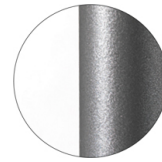
PANTONE 402 C
VR Gris tourterelle
☀



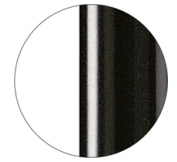
RAL 9006
VR Aluminium blanc
☀



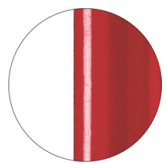
RAL 7016
VR Gris anthracite
☀



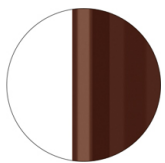
VR Etain
☀



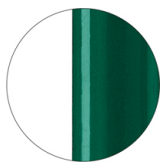
RAL 9005
VR Noir foncé
☀



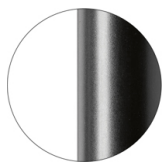
RAL 3003
VR Rouge rubis
☀



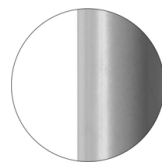
RAL 8017
VR Brun chocolat
☀



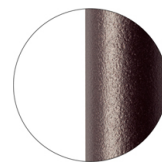
RAL 6005
VR Vert mousse
☀



RAL 9005
VR Noir foncé opaque
☀



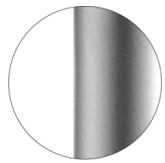
RAL 7037
VR Gris poussière opaque
☀



VR Bronze métallique
texturé
☀



CR Chromé



CR S Chromé satiné

Uni-Ka 596

UNI-KA COLLECTION:

Uni-Ka 594, Uni-Ka 594M, Uni-Ka 595, Uni-Ka 595M, Uni-Ka 596, Uni-Ka 596M, Uni-Ka 597-DP, Uni-Ka 597-DR, Uni-Ka 597M-DP, Uni-Ka 597M-DR, Uni-Ka 598, Uni-Ka 598M, Uni-Ka 599M, Uni-Ka 599, Uni-Ka 600, Uni-Ka 600M, Uni-Ka 601, Uni-ka 601M, Uni-Ka 601, Uni-Ka 604M,



FAUTEUIL DESIGN:

Fauteuil avec châssis treillis en fil d'acier. Coque en polypropylène.

POIDS

6,9 kg

EMBALLAGE

0,34 m³

PIÈCES PAR CARTON

1

FINITIONS SIÈGES

PP POLYPROPYLÈNE 



RAL 9016 Blanc
signalisation



RAL 3000 Rouge feu



RAL 7016 Gris
anthracite



RAL 2003 Orangé
pastel



NCS S7005-Y50R
Cacao



RAL 9005 Noir foncé



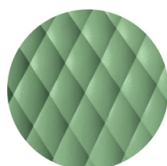
PANTONE 380 C
Vert boss



NCS S4005-Y50R Gris
tourterelle



PANTONE 18-1438
Marsala



RAL 6021 Vert pâle



PIÈTEMENTS

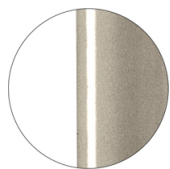
AC ACIER



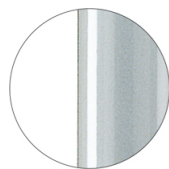
RAL 9016
VR Blanc signalisation



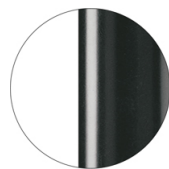
RAL 9010
VR Blanc pur



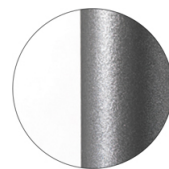
PANTONE 402 C
VR Gris tourterelle



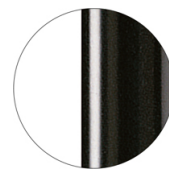
RAL 9006
VR Aluminium blanc



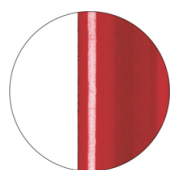
RAL 7016
VR Gris anthracite



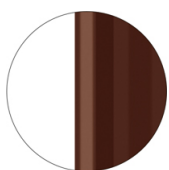
VR Etain



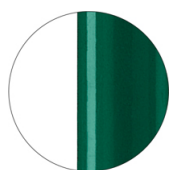
RAL 9005
VR Noir foncé



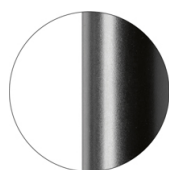
RAL 3003
VR Rouge rubis



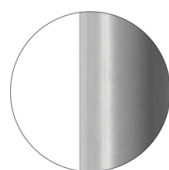
RAL 8017
VR Brun chocolat



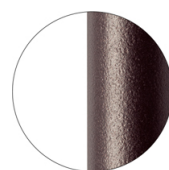
RAL 6005
VR Vert mousse



RAL 9005
VR Noir foncé opaque



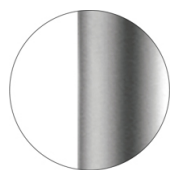
RAL 7037
VR Gris poussière opaque



VR Bronze métallique
texturé



CR Chromé



CR S Chromé satiné

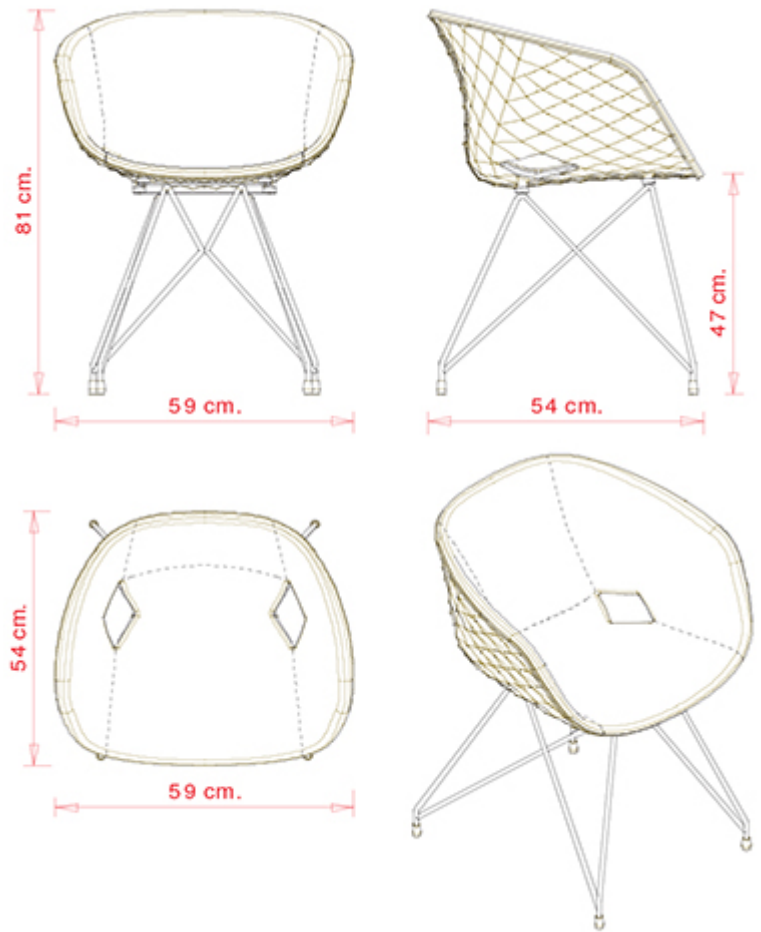
CERTIFICATIONS

> UNI/EN 16139:2013 - Par.6. Prova 8. Prova di fatica sedile e schienale: 2-Usò estremo (11/11/16)

Uni-Ka 596M

UNI-KA COLLECTION:

Uni-Ka 594, Uni-Ka 594M, Uni-Ka 595, Uni-Ka 595M, Uni-Ka 596, Uni-Ka 596M, Uni-Ka 597-DP, Uni-Ka 597-DR, Uni-Ka 597M-DP, Uni-Ka 597M-DR, Uni-Ka 598, Uni-Ka 598M, Uni-Ka 599M, Uni-Ka 599, Uni-Ka 600, Uni-Ka 600M, Uni-Ka 601, Uni-ka 601M, Uni-Ka 601, Uni-Ka 604M,



FAUTEUIL DESIGN:

Fauteuil avec châssis treillis en fil d'acier. Coque en polypropylène rembourrée.

POIDS

9,8 Kg

EMBALLAGE

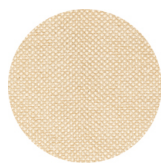
0,34 m³

PIÈCES PAR CARTON

1

FINITIONS SIÈGES

TE TISSUS



Sawana Davis
+ 24 couleurs



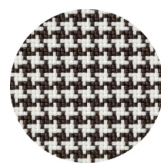
Citadel Camira
+ 16 couleurs



Inca Abitex
+ 15 couleurs



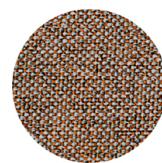
Medley Gabriel
+ 14 couleurs



Go-Couture Gabriel
+ 8 couleurs



Crazy Flukso
+ 7 couleurs



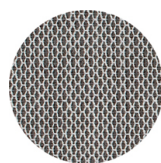
Rivet Camira
+ 12 couleurs



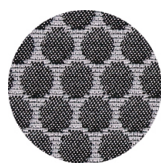
Xtreme Camira
+ 16 couleurs



Valencia Spradling
+ 17 couleurs



Criss Cross Gabriel
+ 19 couleurs



Bubble Flukso
+ 9 couleurs



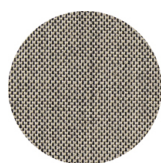
Europost 2 Gabriel
+ 16 couleurs



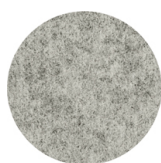
Fame Gabriel
+ 23 couleurs



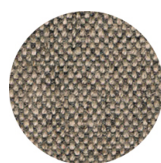
Parotega NF
Skai Hornschuch
+ 8 couleurs



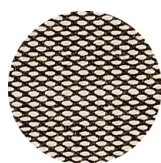
Balta Vescom
+ 12 couleurs



Blazer Camira
+ 25 couleurs



Main line flax Camira
+ 13 couleurs



Steelcut trio 3
Kvadrat
+ 20 couleurs

PP POLYPROPYLÈNE



RAL 9016 Blanc
signalisation
≡



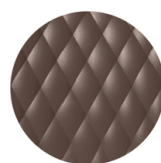
RAL 3000 Rouge feu
≡



RAL 7016 Gris
anthracite
≡



RAL 2003 Orangé
pastel
≡



NCS S7005-Y50R
Cacao
≡



RAL 9005 Noir foncé
≡



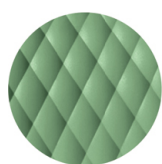
PANTONE 380 C
Vert boss
≡



NCS S4005-Y50R Gris
tourterelle
≡



PANTONE 18-1438
Marsala
≡



RAL 6021 Vert pâle
≡

PIÈTEMENTS

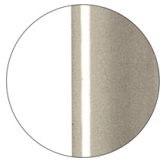
AC ACIER



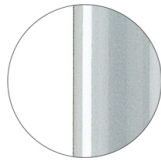
RAL 9016
VR Blanc signalisation
☀



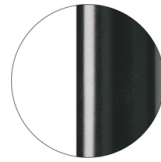
RAL 9010
VR Blanc pur
☀



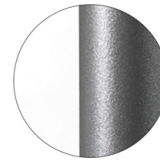
PANTONE 402 C
VR Gris tourterelle
☀



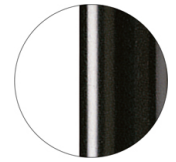
RAL 9006
VR Aluminium blanc
☀



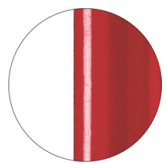
RAL 7016
VR Gris anthracite
☀



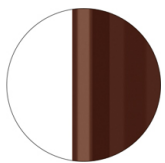
VR Etain
☀



RAL 9005
VR Noir foncé
☀



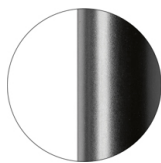
RAL 3003
VR Rouge rubis
☀



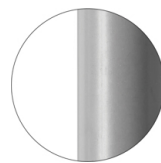
RAL 8017
VR Brun chocolat
☀



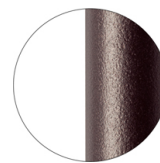
RAL 6005
VR Vert mousse
☀



RAL 9005
VR Noir foncé opaque
☀



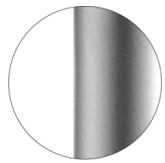
RAL 7037
VR Gris poussière opaque
☀



VR Bronze métallique
texturé
☀



CR Chromé



CR S Chromé satiné

Uni-Ka 597-DP



UNI-KA COLLECTION:

Uni-Ka 594, Uni-Ka 594M, Uni-Ka 595, Uni-Ka 595M, Uni-Ka 596, Uni-Ka 596M, Uni-Ka 597-DP, Uni-Ka 597-DR, Uni-Ka 597M-DP, Uni-Ka 597M-DR, Uni-Ka 598, Uni-Ka 598M, Uni-Ka 599M, Uni-Ka 599, Uni-Ka 600, Uni-Ka 600M, Uni-Ka 601, Uni-ka 601M, Uni-Ka 601, Uni-Ka 604M,



FAUTEUIL DESIGN:

Fauteuil pivotant avec châssis en aluminium 5 branches avec patins. Coque en polypropylène.

POIDS

7,2 kg

EMBALLAGE

0,50 m³

PIÈCES PAR CARTON

1

FINITIONS SIÈGES

PP POLYPROPYLÈNE



RAL 9016 Blanc
signalisation



RAL 3000 Rouge feu



RAL 7016 Gris
anthracite



RAL 2003 Orangé
pastel



NCS S7005-Y50R
Cacao



RAL 9005 Noir foncé



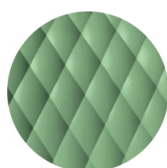
PANTONE 380 C
Vert boss



NCS S4005-Y50R Gris
tourterelle



PANTONE 18-1438
Marsala



RAL 6021 Vert pâle



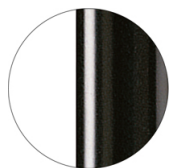
PIÈTEMENTS

AL PSH ALUMINIUM BRILLANT



Aluminium brillant

AL VR ALUMINIUM VERNI



RAL 9005
VR Noir foncé



Uni-Ka 597-DR



UNI-KA COLLECTION:

Uni-Ka 594, Uni-Ka 594M, Uni-Ka 595, Uni-Ka 595M, Uni-Ka 596, Uni-Ka 596M, Uni-Ka 597-DP, Uni-Ka 597-DR, Uni-Ka 597M-DP, Uni-Ka 597M-DR, Uni-Ka 598, Uni-Ka 598M, Uni-Ka 599M, Uni-Ka 599, Uni-Ka 600, Uni-Ka 600M, Uni-Ka 601, Uni-ka 601M, Uni-Ka 601, Uni-Ka 604M,



FAUTEUIL DESIGN:

Fauteuil pivotant avec châssis en aluminium 5 branches avec roulettes. Coque en polypropylène.

POIDS

7,2 kg

EMBALLAGE

0,50 m³

PIÈCES PAR CARTON

1

FINITIONS SIÈGES

PP POLYPROPYLÈNE



RAL 9016 Blanc
signalisation



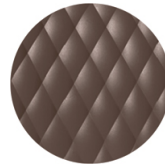
RAL 3000 Rouge feu



RAL 7016 Gris
anthracite



RAL 2003 Orangé
pastel



NCS S7005-Y50R
Cacao



RAL 9005 Noir foncé



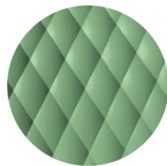
PANTONE 380 C
Vert boss



NCS S4005-Y50R Gris
tourterelle



PANTONE 18-1438
Marsala



RAL 6021 Vert pâle



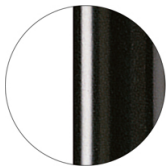
PIÈTEMENTS

AL PSH ALUMINIUM BRILLANT



Aluminium brillant

AL VR ALUMINIUM VERNI



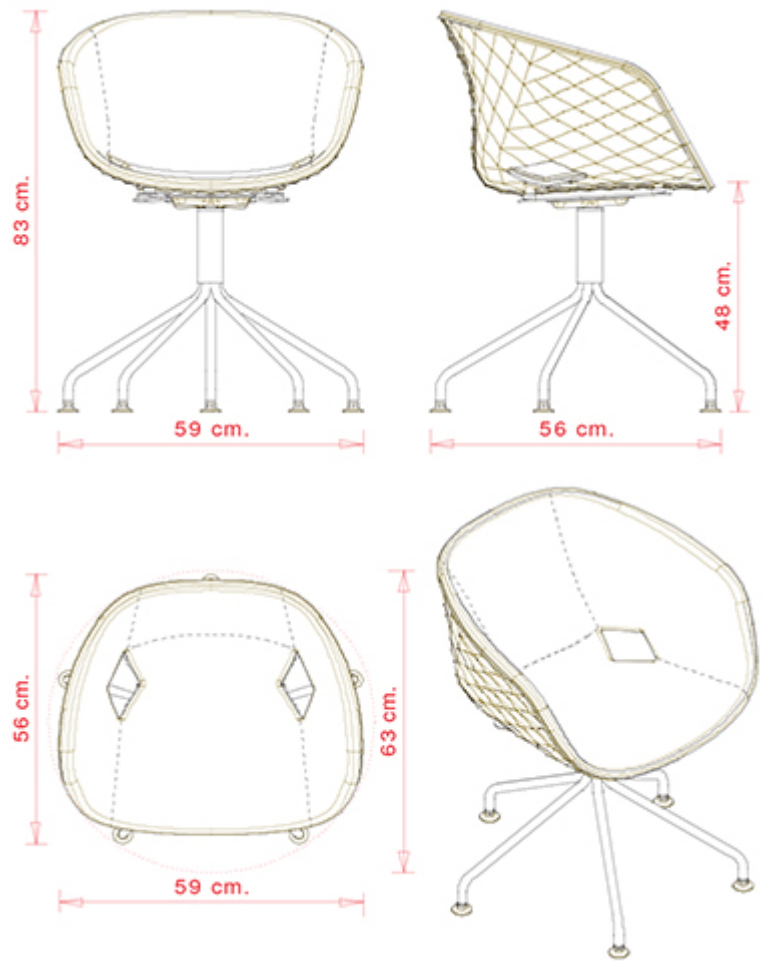
RAL 9005
VR Noir foncé



Uni-Ka 597M-DP

UNI-KA COLLECTION:

Uni-Ka 594, Uni-Ka 594M, Uni-Ka 595, Uni-Ka 595M, Uni-Ka 596, Uni-Ka 596M, Uni-Ka 597-DP, Uni-Ka 597-DR, Uni-Ka 597M-DP, Uni-Ka 597M-DR, Uni-Ka 598, Uni-Ka 598M, Uni-Ka 599M, Uni-Ka 599, Uni-Ka 600, Uni-Ka 600M, Uni-Ka 601, Uni-ka 601M, Uni-Ka 601, Uni-Ka 604M,



FAUTEUIL DESIGN:

Fauteuil pivotant avec châssis en aluminium 5 branches avec patins. Coque en polypropylène rembourrée.

POIDS

9,5 Kg

EMBALLAGE

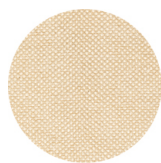
0,50 m³

PIÈCES PAR CARTON

1

FINITIONS SIÈGES

TE TISSUS



Sawana Davis
+ 24 couleurs



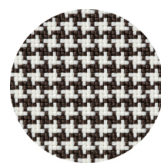
Citadel Camira
+ 16 couleurs



Inca Abitex
+ 15 couleurs



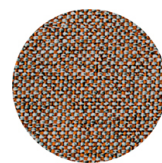
Medley Gabriel
+ 14 couleurs



Go-Couture Gabriel
+ 8 couleurs



Crazy Flukso
+ 7 couleurs



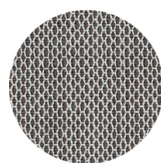
Rivet Camira
+ 12 couleurs



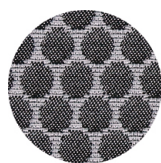
Xtreme Camira
+ 16 couleurs



Valencia Spradling
+ 17 couleurs



Criss Cross Gabriel
+ 19 couleurs



Bubble Flukso
+ 9 couleurs



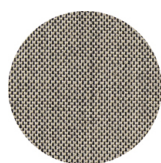
Europost 2 Gabriel
+ 16 couleurs



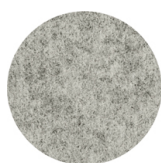
Fame Gabriel
+ 23 couleurs



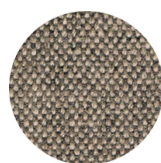
Parotega NF
Skai Hornschuch
+ 8 couleurs



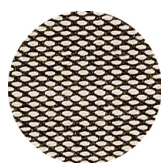
Balta Vescom
+ 12 couleurs



Blazer Camira
+ 25 couleurs



Main line flax Camira
+ 13 couleurs



Steelcut trio 3
Kvadrat
+ 20 couleurs

PP POLYPROPYLÈNE



RAL 9016 Blanc
signalisation
≡



RAL 3000 Rouge feu
≡



RAL 7016 Gris
anthracite
≡



RAL 2003 Orangé
pastel
≡



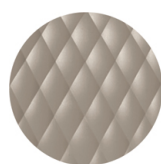
NCS S7005-Y50R
Cacao
≡



RAL 9005 Noir foncé
≡



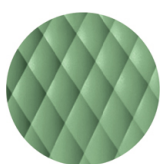
PANTONE 380 C
Vert boss
≡



NCS S4005-Y50R Gris
tourterelle
≡



PANTONE 18-1438
Marsala
≡



RAL 6021 Vert pâle
≡

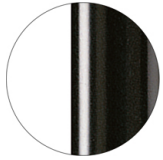
PIÈTEMENTS

AL PSH ALUMINIUM BRILLANT



Aluminium brillant

AL VR ALUMINIUM VERNI



RAL 9005
VR Noir foncé



Uni-Ka 597M-DR



UNI-KA COLLECTION:

Uni-Ka 594, Uni-Ka 594M, Uni-Ka 595, Uni-Ka 595M, Uni-Ka 596, Uni-Ka 596M, Uni-Ka 597-DP, Uni-Ka 597-DR, Uni-Ka 597M-DP, Uni-Ka 597M-DR, Uni-Ka 598, Uni-Ka 598M, Uni-Ka 599M, Uni-Ka 599, Uni-Ka 600, Uni-Ka 600M, Uni-Ka 601, Uni-ka 601M, Uni-Ka 601, Uni-Ka 604M,



FAUTEUIL DESIGN:

Fauteuil pivotant avec châssis en aluminium 5 branches avec roulettes. Coque en polypropylène rembourrée.

POIDS

9,5 Kg

EMBALLAGE

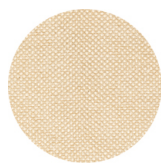
0,50m³

PIÈCES PAR CARTON

1

FINITIONS SIÈGES

TE TISSUS



Sawana Davis
+ 24 couleurs



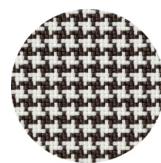
Citadel Camira
+ 16 couleurs



Inca Abitex
+ 15 couleurs



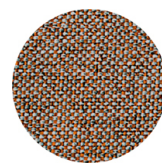
Medley Gabriel
+ 14 couleurs



Go-Couture Gabriel
+ 8 couleurs



Crazy Flukso
+ 7 couleurs



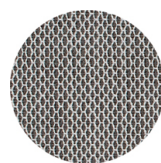
Rivet Camira
+ 12 couleurs



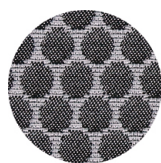
Xtreme Camira
+ 16 couleurs



Valencia Spradling
+ 17 couleurs



Criss Cross Gabriel
+ 19 couleurs



Bubble Flukso
+ 9 couleurs



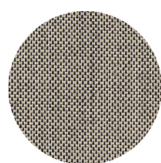
Europost 2 Gabriel
+ 16 couleurs



Fame Gabriel
+ 23 couleurs



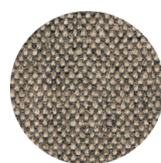
Parotega NF
Skai Hornschuch
+ 8 couleurs



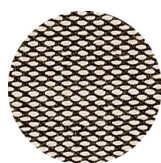
Balta Vescom
+ 12 couleurs



Blazer Camira
+ 25 couleurs



Main line flax Camira
+ 13 couleurs



Steelcut trio 3
Kvadrat
+ 20 couleurs

PP POLYPROPYLÈNE



RAL 9016 Blanc
signalisation
≡



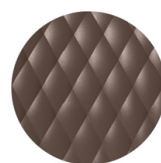
RAL 3000 Rouge feu
≡



RAL 7016 Gris
anthracite
≡



RAL 2003 Orangé
pastel
≡



NCS S7005-Y50R
Cacao
≡



RAL 9005 Noir foncé
≡



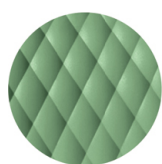
PANTONE 380 C
Vert boss
≡



NCS S4005-Y50R Gris
tourterelle
≡



PANTONE 18-1438
Marsala
≡



RAL 6021 Vert pâle
≡

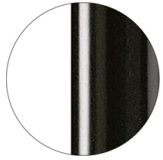
PIÈTEMENTS

AL PSH ALUMINIUM BRILLANT



Aluminium brillant

AL VR ALUMINIUM VERNI



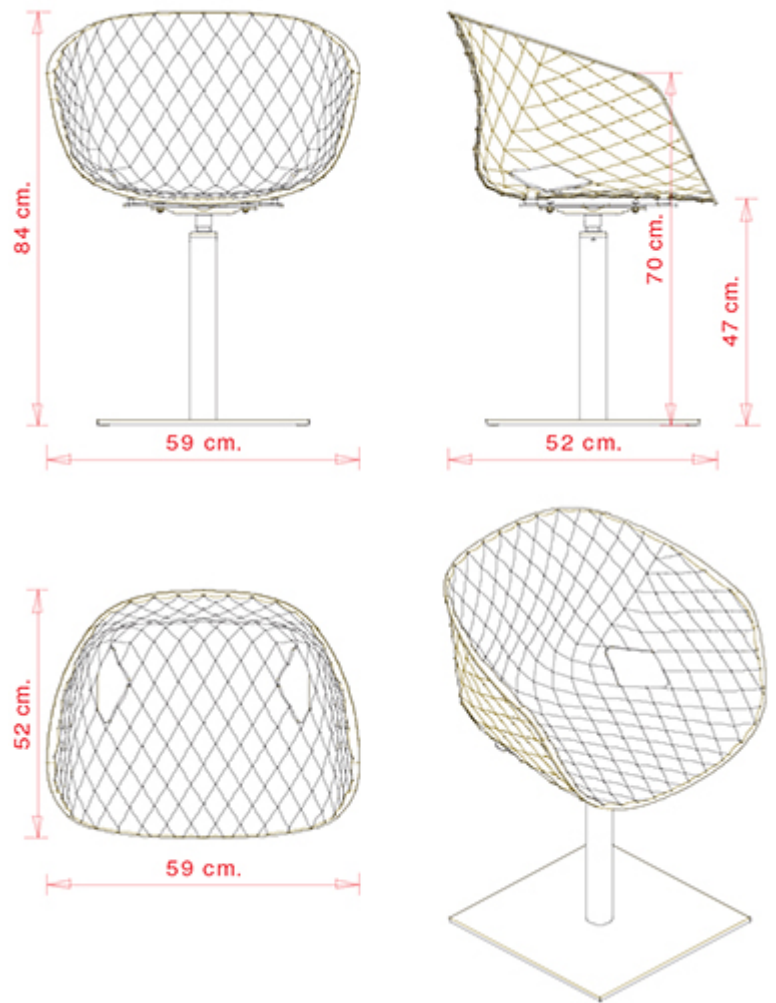
RAL 9005
VR Noir foncé



Uni-Ka 598

UNI-KA COLLECTION:

Uni-Ka 594, Uni-Ka 594M, Uni-Ka 595, Uni-Ka 595M, Uni-Ka 596, Uni-Ka 596M, Uni-Ka 597-DP, Uni-Ka 597-DR, Uni-Ka 597M-DP, Uni-Ka 597M-DR, Uni-Ka 598, Uni-Ka 598M, Uni-Ka 599M, Uni-Ka 599, Uni-Ka 600, Uni-Ka 600M, Uni-Ka 601, Uni-ka 601M, Uni-Ka 601, Uni-Ka 604M,



FAUTEUIL DESIGN:

Fauteuil avec piétement central pivotant en acier avec mécanisme de retour. Coque en polypropylène.

POIDS

15,8 kg

EMBALLAGE

0,34 m³

PIÈCES PAR CARTON

1

FINITIONS SIÈGES

PP POLYPROPYLÈNE



RAL 9016 Blanc
signalisation



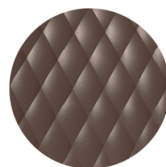
RAL 3000 Rouge feu



RAL 7016 Gris
anthracite



RAL 2003 Orangé
pastel



NCS S7005-Y50R
Cacao



RAL 9005 Noir foncé



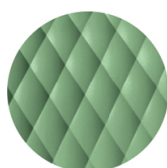
PANTONE 380 C
Vert boss



NCS S4005-Y50R Gris
tourterelle



PANTONE 18-1438
Marsala



RAL 6021 Vert pâle



PIÈTEMENTS

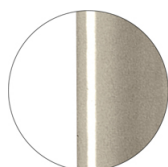
AC ACIER



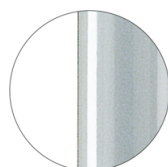
RAL 9016
VR Blanc signalisation



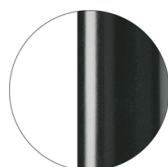
RAL 9010
VR Blanc pur



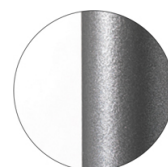
PANTONE 402 C
VR Gris tourterelle



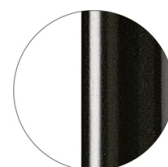
RAL 9006
VR Aluminium blanc



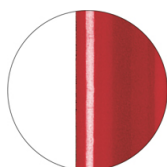
RAL 7016
VR Gris anthracite



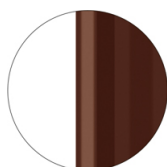
VR Etain



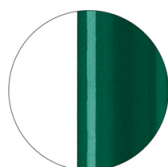
RAL 9005
VR Noir foncé



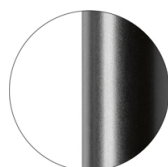
RAL 3003
VR Rouge rubis



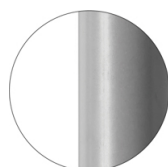
RAL 8017
VR Brun chocolat



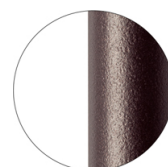
RAL 6005
VR Vert mousse



RAL 9005
VR Noir foncé opaque



RAL 7037
VR Gris poussière
opaque



VR Bronze métallique
texturé

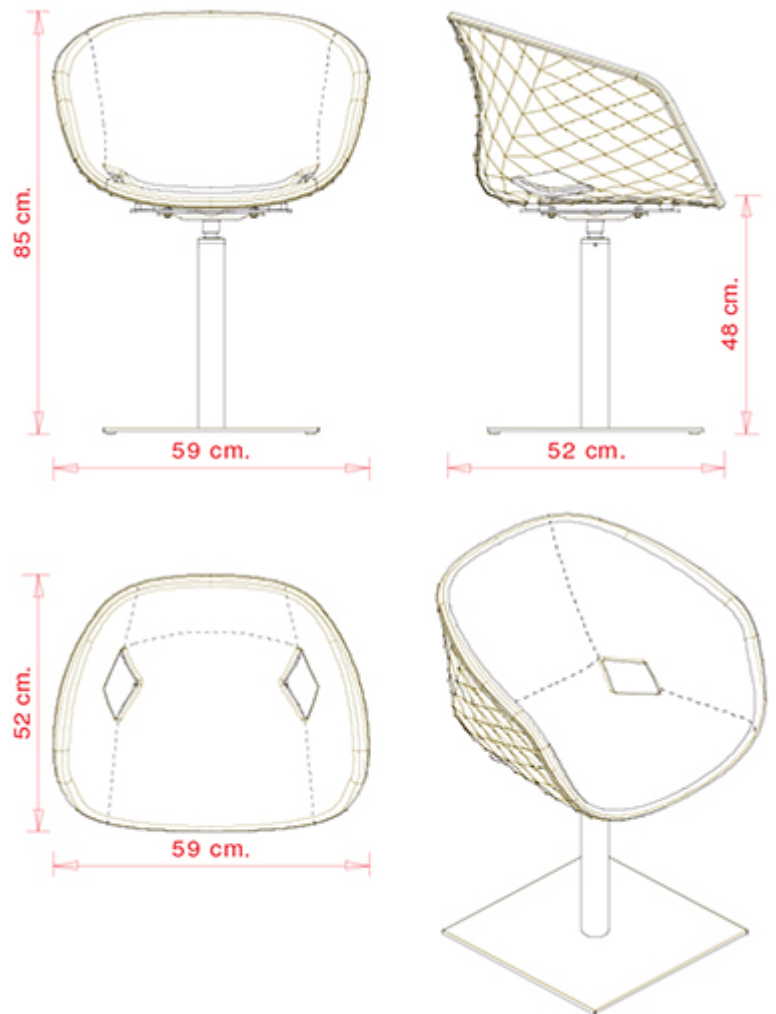


CR Chromé

Uni-Ka 598M

UNI-KA COLLECTION:

Uni-Ka 594, Uni-Ka 594M, Uni-Ka 595, Uni-Ka 595M, Uni-Ka 596, Uni-Ka 596M, Uni-Ka 597-DP, Uni-Ka 597-DR, Uni-Ka 597M-DP, Uni-Ka 597M-DR, Uni-Ka 598, Uni-Ka 598M, Uni-Ka 599M, Uni-Ka 599, Uni-Ka 600, Uni-Ka 600M, Uni-Ka 601, Uni-Ka 601M, Uni-Ka 601, Uni-Ka 604M,



FAUTEUIL DESIGN:

Fauteuil avec piétement central pivotant en acier avec mécanisme de retour.
Coque en polypropylène rembourrée.

POIDS

18,7 Kg

EMBALLAGE

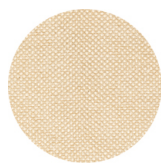
0,34 m³

PIÈCES PAR CARTON

1

FINITIONS SIÈGES

TE TISSUS



Sawana Davis
+ 24 couleurs



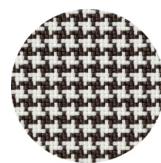
Citadel Camira
+ 16 couleurs



Inca Abitex
+ 15 couleurs



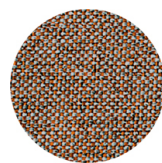
Medley Gabriel
+ 14 couleurs



Go-Couture Gabriel
+ 8 couleurs



Crazy Flukso
+ 7 couleurs



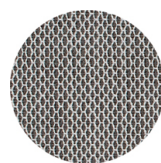
Rivet Camira
+ 12 couleurs



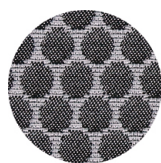
Xtreme Camira
+ 16 couleurs



Valencia Spradling
+ 17 couleurs



Criss Cross Gabriel
+ 19 couleurs



Bubble Flukso
+ 9 couleurs



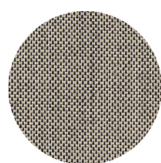
Europost 2 Gabriel
+ 16 couleurs



Fame Gabriel
+ 23 couleurs



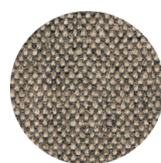
Parotega NF
Skai Hornschuch
+ 8 couleurs



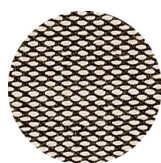
Balta Vescom
+ 12 couleurs



Blazer Camira
+ 25 couleurs



Main line flax Camira
+ 13 couleurs



Steelcut trio 3
Kvadrat
+ 20 couleurs

PP POLYPROPYLÈNE



RAL 9016 Blanc
signalisation
≡



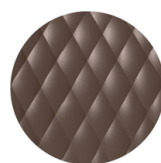
RAL 3000 Rouge feu
≡



RAL 7016 Gris
anthracite
≡



RAL 2003 Orangé
pastel
≡



NCS S7005-Y50R
Cacao
≡



RAL 9005 Noir foncé
≡



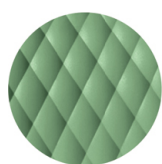
PANTONE 380 C
Vert boss
≡



NCS S4005-Y50R Gris
tourterelle
≡



PANTONE 18-1438
Marsala
≡



RAL 6021 Vert pâle
≡

PIÈTEMENTS

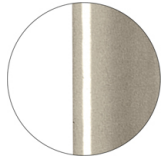
AC ACIER



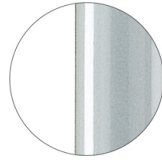
RAL 9016
VR Blanc signalisation
☀



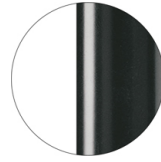
RAL 9010
VR Blanc pur
☀



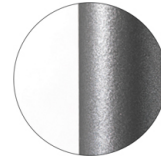
PANTONE 402 C
VR Gris tourterelle
☀



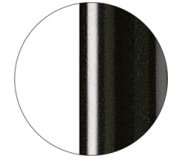
RAL 9006
VR Aluminium blanc
☀



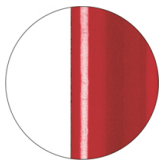
RAL 7016
VR Gris anthracite
☀



VR Etain
☀



RAL 9005
VR Noir foncé
☀



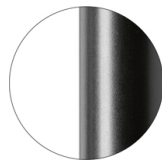
RAL 3003
VR Rouge rubis
☀



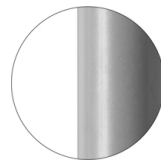
RAL 8017
VR Brun chocolat
☀



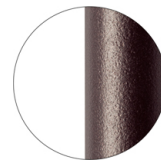
RAL 6005
VR Vert mousse
☀



RAL 9005
VR Noir foncé opaque
☀



RAL 7037
VR Gris poussière
opaque
☀



VR Bronze métallique
texturé
☀



CR Chromé

Uni-Ka 599M

UNI-KA COLLECTION:

Uni-Ka 594, Uni-Ka 594M, Uni-Ka 595, Uni-Ka 595M, Uni-Ka 596, Uni-Ka 596M, Uni-Ka 597-DP, Uni-Ka 597-DR, Uni-Ka 597M-DP, Uni-Ka 597M-DR, Uni-Ka 598, Uni-Ka 598M, Uni-Ka 599M, Uni-Ka 599, Uni-Ka 600, Uni-Ka 600M, Uni-Ka 601, Uni-ka 601M, Uni-Ka 601, Uni-Ka 604M,



FAUTEUIL DESIGN:

Fauteuil avec châssis 4 pieds en hêtre. Coque en polypropylène rembourrée.

POIDS

9,4 Kg

EMBALLAGE

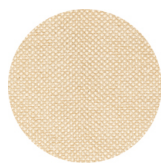
0,34 m³

PIÈCES PAR CARTON

1

FINITIONS SIÈGES

TE TISSUS



Sawana Davis
+ 24 couleurs



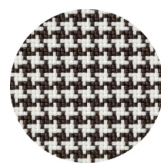
Citadel Camira
+ 16 couleurs



Inca Abitex
+ 15 couleurs



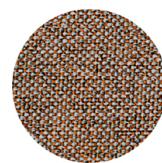
Medley Gabriel
+ 14 couleurs



Go-Couture Gabriel
+ 8 couleurs



Crazy Flukso
+ 7 couleurs



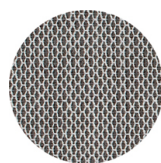
Rivet Camira
+ 12 couleurs



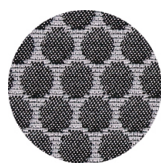
Xtreme Camira
+ 16 couleurs



Valencia Spradling
+ 17 couleurs



Criss Cross Gabriel
+ 19 couleurs



Bubble Flukso
+ 9 couleurs



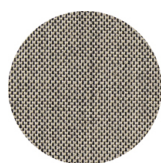
Europost 2 Gabriel
+ 16 couleurs



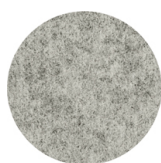
Fame Gabriel
+ 23 couleurs



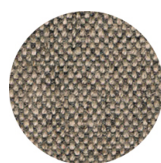
Parotega NF
Skai Hornschuch
+ 8 couleurs



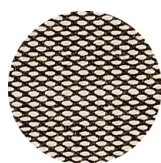
Balta Vescom
+ 12 couleurs



Blazer Camira
+ 25 couleurs



Main line flax Camira
+ 13 couleurs



Steelcut trio 3
Kvadrat
+ 20 couleurs

PP POLYPROPYLÈNE



RAL 9016 Blanc
signalisation
≡



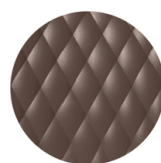
RAL 3000 Rouge feu
≡



RAL 7016 Gris
anthracite
≡



RAL 2003 Orangé
pastel
≡



NCS S7005-Y50R
Cacao
≡



RAL 9005 Noir foncé
≡



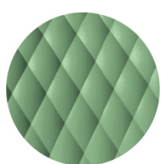
PANTONE 380 C
Vert boss
≡



NCS S4005-Y50R Gris
tourterelle
≡



PANTONE 18-1438
Marsala
≡



RAL 6021 Vert pâle
≡

PIÈTEMENTS

LE BOIS



Hêtre teinté érable



Hêtre naturel



Hêtre teinté wengé



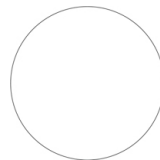
Hêtre teinté noir



Hêtre teinté noyer
canaletto



Hêtre teinté chêne



Teinté selon échantillon

Uni-Ka 599

UNI-KA COLLECTION:

Uni-Ka 594, Uni-Ka 594M, Uni-Ka 595, Uni-Ka 595M, Uni-Ka 596, Uni-Ka 596M, Uni-Ka 597-DP, Uni-Ka 597-DR, Uni-Ka 597M-DP, Uni-Ka 597M-DR, Uni-Ka 598, Uni-Ka 598M, Uni-Ka 599M, Uni-Ka 599, Uni-Ka 600, Uni-Ka 600M, Uni-Ka 601, Uni-ka 601M, Uni-Ka 601, Uni-Ka 604M,



FAUTEUIL DESIGN:

Fauteuil avec châssis 4 pieds en hêtre. Coque en polypropylène.

POIDS

6,5 kg

EMBALLAGE

0,34 m³

PIÈCES PAR CARTON

1

FINITIONS SIÈGES

PP POLYPROPYLÈNE



RAL 9016 Blanc
signalisation



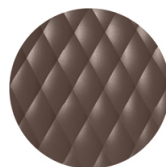
RAL 3000 Rouge feu



RAL 7016 Gris
anthracite



RAL 2003 Orangé
pastel



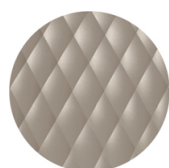
NCS S7005-Y50R
Cacao



RAL 9005 Noir foncé



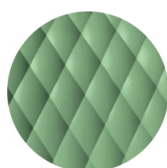
PANTONE 380 C
Vert boss



NCS S4005-Y50R Gris
tourterelle



PANTONE 18-1438
Marsala



RAL 6021 Vert pâle



PIÈTEMENTS

LE BOIS



Hêtre teinté érable



Hêtre naturel



Hêtre teinté wengé



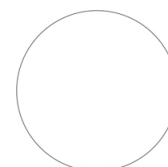
Hêtre teinté noir



Hêtre teinté noyer
canaletto



Hêtre teinté chêne



Teinté selon échantillon

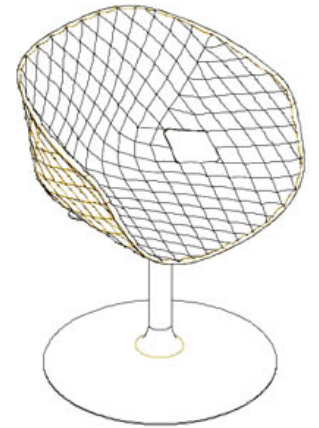
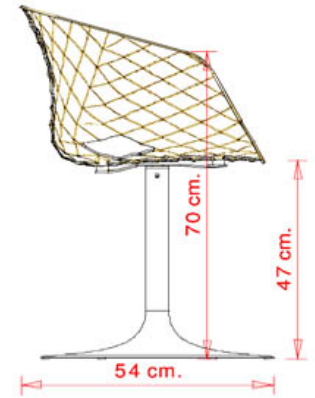
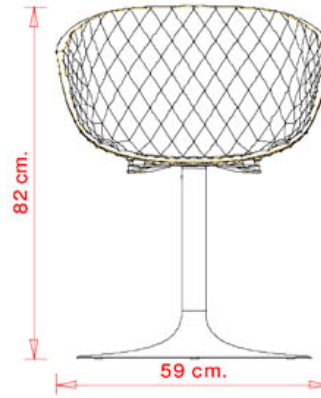
CERTIFICATIONS

- > UNI/EN 16139:2013 - Prova 12. Carico statico gambe anteriori: 2-Usò estremo (03/04/15)
- > UNI/EN 16139:2013 - Prova 13. Carico statico gambe laterali: 2-Usò estremo (03/04/15)
- > UNI/EN 16139:2013 - Prova 8. Prova di fatica sedile e schienale: 2-Usò estremo (03/04/15)
- > UNI/EN 16139:2013 - Prova 9. Prova di fatica sul bordo anteriore: 2-Usò estremo (03/04/15)

Uni-Ka 600

UNI-KA COLLECTION:

Uni-Ka 594, Uni-Ka 594M, Uni-Ka 595, Uni-Ka 595M, Uni-Ka 596, Uni-Ka 596M, Uni-Ka 597-DP, Uni-Ka 597-DR, Uni-Ka 597M-DP, Uni-Ka 597M-DR, Uni-Ka 598, Uni-Ka 598M, Uni-Ka 599M, Uni-Ka 599, Uni-Ka 600, Uni-Ka 600M, Uni-Ka 601, Uni-ka 601M, Uni-Ka 601, Uni-Ka 604M,



FAUTEUIL DESIGN:

Fauteuil avec piétement central pivotant en acier. Coque en polypropylène.

POIDS

10,6 kg

EMBALLAGE

0,34 m³

PIÈCES PAR CARTON

1

FINITIONS SIÈGES

PP POLYPROPYLÈNE 



RAL 9016 Blanc
signalisation



RAL 3000 Rouge feu



RAL 7016 Gris
anthracite



RAL 2003 Orangé
pastel



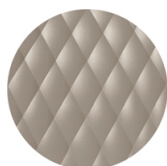
NCS S7005-Y50R
Cacao



RAL 9005 Noir foncé



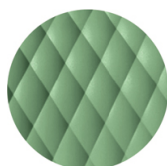
PANTONE 380 C
Vert boss



NCS S4005-Y50R Gris
tourterelle



PANTONE 18-1438
Marsala



RAL 6021 Vert pâle



PIÈTEMENTS

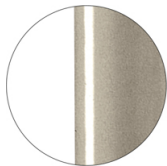
AC ACIER



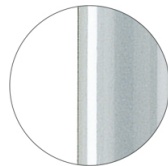
RAL 9016
VR Blanc signalisation



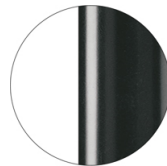
RAL 9010
VR Blanc pur



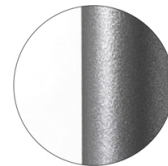
PANTONE 402 C
VR Gris tourterelle



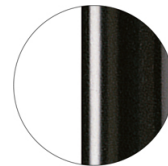
RAL 9006
VR Aluminium blanc



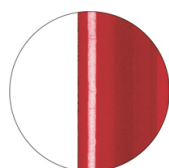
RAL 7016
VR Gris anthracite



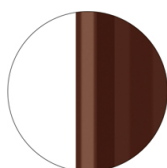
VR Etain



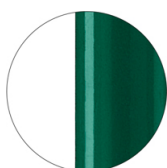
RAL 9005
VR Noir foncé



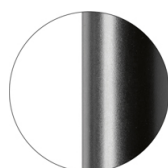
RAL 3003
VR Rouge rubis



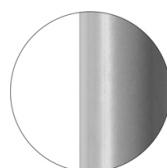
RAL 8017
VR Brun chocolat



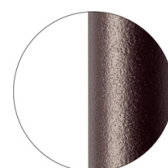
RAL 6005
VR Vert mousse



RAL 9005
VR Noir foncé opaque



RAL 7037
VR Gris poussière opaque



VR Bronze métallique texturé



CR Chromé

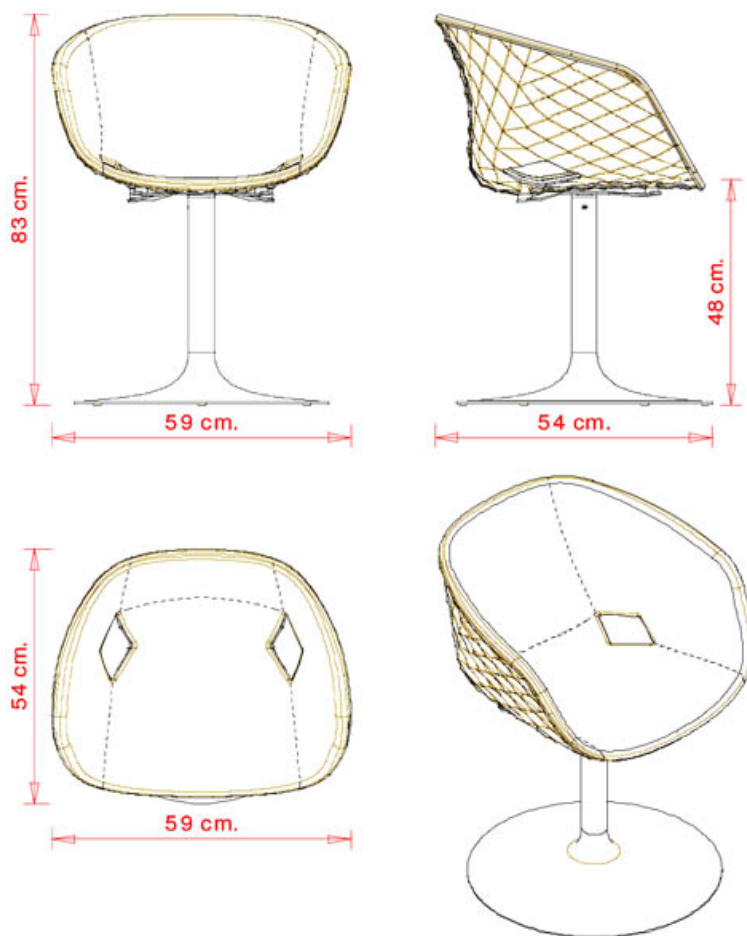
CERTIFICATIONS

> UNI/EN 16139:2013 - Par.6. Prova 8. Prova di fatica sedile e schienale: 2-Usò estremo (21/09/16)

Uni-Ka 600M

UNI-KA COLLECTION:

Uni-Ka 594, Uni-Ka 594M, Uni-Ka 595, Uni-Ka 595M, Uni-Ka 596, Uni-Ka 596M, Uni-Ka 597-DP, Uni-Ka 597-DR, Uni-Ka 597M-DP, Uni-Ka 597M-DR, Uni-Ka 598, Uni-Ka 598M, Uni-Ka 599M, Uni-Ka 599, Uni-Ka 600, Uni-Ka 600M, Uni-Ka 601, Uni-ka 601M, Uni-Ka 601, Uni-Ka 604M,



FAUTEUIL DESIGN:

Fauteuil avec piétement central pivotant en acier. Coque en polypropylène rembourrée.

POIDS

13,5 Kg

EMBALLAGE

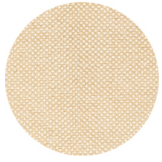
0,34 m³

PIÈCES PAR CARTON

1

FINITIONS SIÈGES

TE TISSUS



Sawana Davis
+ 24 couleurs



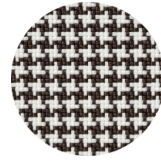
Citadel Camira
+ 16 couleurs



Inca Abitex
+ 15 couleurs



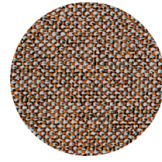
Medley Gabriel
+ 14 couleurs



Go-Couture Gabriel
+ 8 couleurs



Crazy Flukso
+ 7 couleurs



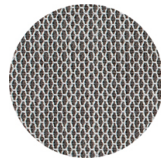
Rivet Camira
+ 12 couleurs



Xtreme Camira
+ 16 couleurs



Valencia Spradling
+ 17 couleurs



Criss Cross Gabriel
+ 19 couleurs



Bubble Flukso
+ 9 couleurs



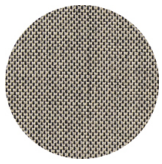
Europost 2 Gabriel
+ 16 couleurs



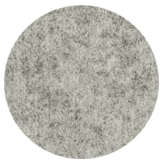
Fame Gabriel
+ 23 couleurs



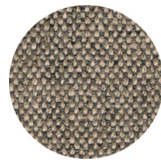
Parotega NF
Skai Hornschuch
+ 8 couleurs



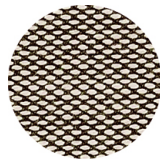
Balta Vescom
+ 12 couleurs



Blazer Camira
+ 25 couleurs



Main line flax Camira
+ 13 couleurs



Steelcut trio 3
Kvadrat
+ 20 couleurs

PP POLYPROPYLÈNE



RAL 9016 Blanc
signalisation
≡



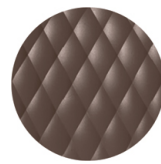
RAL 3000 Rouge feu
≡



RAL 7016 Gris
anthracite
≡



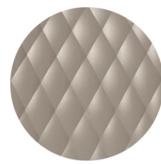
RAL 2003 Orangé
pastel
≡



NCS S7005-Y50R
Cacao
≡



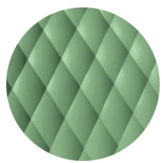
RAL 9005 Noir foncé
≡



NCS S4005-Y50R Gris
tourterelle
≡



PANTONE 18-1438
Marsala
≡



RAL 6021 Vert pâle
≡

PIÈTEMENTS

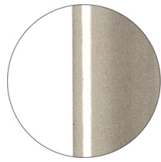
AC ACIER



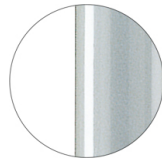
RAL 9016
VR Blanc signalisation
☀



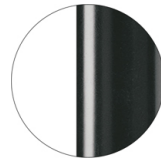
RAL 9010
VR Blanc pur
☀



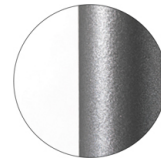
PANTONE 402 C
VR Gris tourterelle
☀



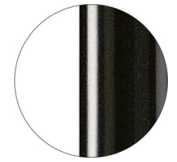
RAL 9006
VR Aluminium blanc
☀



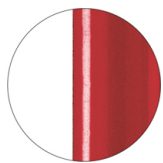
RAL 7016
VR Gris anthracite
☀



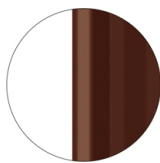
VR Etain
☀



RAL 9005
VR Noir foncé
☀



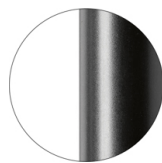
RAL 3003
VR Rouge rubis
☀



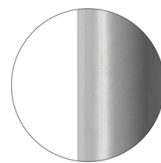
RAL 8017
VR Brun chocolat
☀



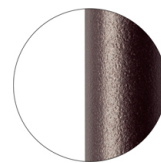
RAL 6005
VR Vert mousse
☀



RAL 9005
VR Noir foncé opaque
☀



RAL 7037
VR Gris poussière
opaque
☀



VR Bronze métallique
texturé
☀



CR Chromé

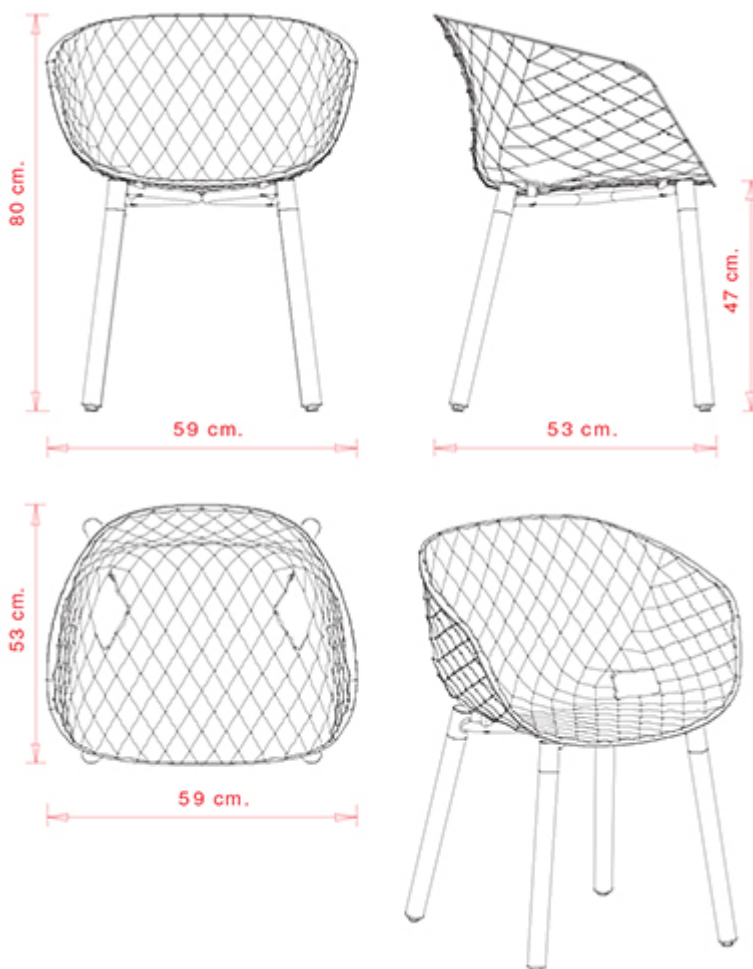
CERTIFICATIONS

> UNI/EN 16139:2013 - Par.6. Prova 8. Prova di fatica sedile e schienale: 2-Usò estremo (23/04/2017)

Uni-Ka 601

UNI-KA COLLECTION:

Uni-Ka 594, Uni-Ka 594M, Uni-Ka 595, Uni-Ka 595M, Uni-Ka 596, Uni-Ka 596M, Uni-Ka 597-DP, Uni-Ka 597-DR, Uni-Ka 597M-DP, Uni-Ka 597M-DR, Uni-Ka 598, Uni-Ka 598M, Uni-Ka 599M, Uni-Ka 599, Uni-Ka 600, Uni-Ka 600M, Uni-Ka 601, Uni-ka 601M, Uni-Ka 601, Uni-Ka 604M,



FAUTEUIL DESIGN:

Fauteuil avec châssis 4 pieds ronds en hêtre. Coque en polypropylène.

POIDS

6,8 Kg

EMBALLAGE

0,34 m³

PIÈCES PAR CARTON

1

FINITIONS SIÈGES

PP POLYPROPYLÈNE



RAL 9016 Blanc
signalisation



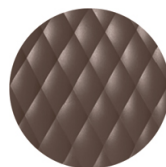
RAL 3000 Rouge feu



RAL 7016 Gris
anthracite



RAL 2003 Orangé
pastel



NCS S7005-Y50R
Cacao



RAL 9005 Noir foncé



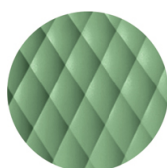
PANTONE 380 C
Vert boss



NCS S4005-Y50R Gris
tourterelle



PANTONE 18-1438
Marsala



RAL 6021 Vert pâle



PIÈTEMENTS

LE BOIS



Hêtre teinté érable



Hêtre naturel



Hêtre teinté wengé



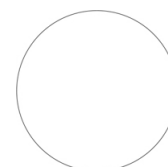
Hêtre teinté noir



Hêtre teinté noyer
canaletto



Hêtre teinté chêne



Teinté selon échantillon

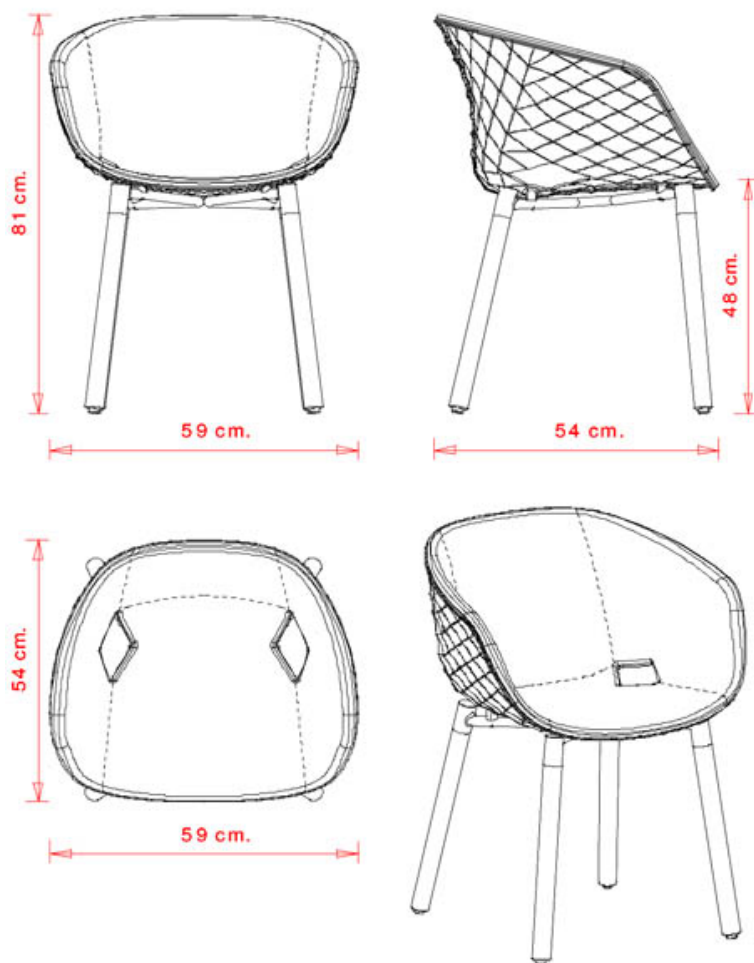
CERTIFICATIONS

- > UNI/EN 16139:2013 - Par.6. Prova 12. Prova di carico statico gambe anteriori: 2-Uso estremo
- > UNI/EN 16139:2013 - Par.4.3. Stabilità. Non si ribalta (16/03/16)
- > UNI/EN 16139:2013 - Par.6. Prova 13. Prova di carico statico gambe laterali: 2-Uso estremo (16/03/16)
- > UNI/EN 16139:2013 - Par.6. Prova 8. Prova di fatica sedile e schienale: 2-Uso estremo (16/03/16)

Uni-ka 601M

UNI-KA COLLECTION:

Uni-Ka 594, Uni-Ka 594M, Uni-Ka 595, Uni-Ka 595M, Uni-Ka 596, Uni-Ka 596M, Uni-Ka 597-DP, Uni-Ka 597-DR, Uni-Ka 597M-DP, Uni-Ka 597M-DR, Uni-Ka 598, Uni-Ka 598M, Uni-Ka 599M, Uni-Ka 599, Uni-Ka 600, Uni-Ka 600M, Uni-Ka 601, Uni-ka 601M, Uni-Ka 601, Uni-Ka 604M,



FAUTEUIL DESIGN:

Fauteuil avec châssis 4 pieds ronds en hêtre. Coque en polypropylène rembourrée.

POIDS

9,7 kg

EMBALLAGE

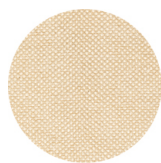
0,34 m³

PIÈCES PAR CARTON

1

FINITIONS SIÈGES

TE TISSUS



Sawana Davis
+ 24 couleurs



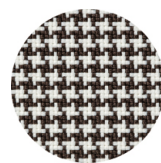
Citadel Camira
+ 16 couleurs



Inca Abitex
+ 15 couleurs



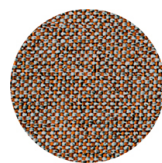
Medley Gabriel
+ 14 couleurs



Go-Couture Gabriel
+ 8 couleurs



Crazy Flukso
+ 7 couleurs



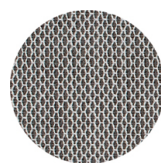
Rivet Camira
+ 12 couleurs



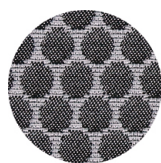
Xtreme Camira
+ 16 couleurs



Valencia Spradling
+ 17 couleurs



Criss Cross Gabriel
+ 19 couleurs



Bubble Flukso
+ 9 couleurs



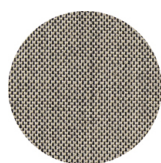
Europost 2 Gabriel
+ 16 couleurs



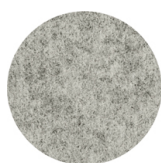
Fame Gabriel
+ 23 couleurs



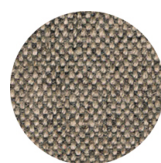
Parotega NF
Skai Hornschuch
+ 8 couleurs



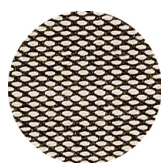
Balta Vescom
+ 12 couleurs



Blazer Camira
+ 25 couleurs



Main line flax Camira
+ 13 couleurs



Steelcut trio 3
Kvadrat
+ 20 couleurs

PP POLYPROPYLÈNE



RAL 9016 Blanc
signalisation
≡



RAL 3000 Rouge feu
≡



RAL 7016 Gris
anthracite
≡



RAL 2003 Orangé
pastel
≡



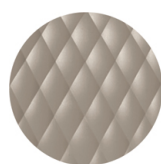
NCS S7005-Y50R
Cacao
≡



RAL 9005 Noir foncé
≡



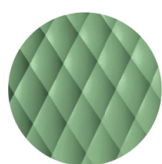
PANTONE 380 C
Vert boss
≡



NCS S4005-Y50R Gris
tourterelle
≡



PANTONE 18-1438
Marsala
≡



RAL 6021 Vert pâle
≡

PIÈTEMENTS

LE BOIS



Hêtre teinté érable



Hêtre naturel



Hêtre teinté wengé



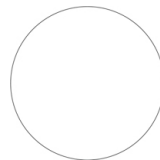
Hêtre teinté noir



Hêtre teinté noyer
canaletto



Hêtre teinté chêne



Teinté selon échantillon

Uni-Ka 601



UNI-KA COLLECTION:

Uni-Ka 594, Uni-Ka 594M, Uni-Ka 595, Uni-Ka 595M, Uni-Ka 596, Uni-Ka 596M, Uni-Ka 597-DP, Uni-Ka 597-DR, Uni-Ka 597M-DP, Uni-Ka 597M-DR, Uni-Ka 598, Uni-Ka 598M, Uni-Ka 599M, Uni-Ka 599, Uni-Ka 600, Uni-Ka 600M, Uni-Ka 601, Uni-ka 601M, Uni-Ka 601, Uni-Ka 604M,



FAUTEUIL DESIGN:

Fauteuil lounge avec châssis en acier 4 pieds et coque en polypropylène.

POIDS

6,35 Kg

EMBALLAGE

0,31 m³

PIÈCES PAR CARTON

1

FINITIONS SIÈGES

PP POLYPROPYLÈNE 



RAL 9016 Blanc
signalisation



RAL 3000 Rouge feu



RAL 7016 Gris
anthracite



RAL 2003 Orangé
pastel



NCS S7005-Y50R
Cacao



RAL 9005 Noir foncé



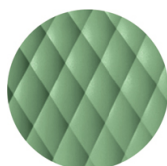
PANTONE 380 C
Vert boss



NCS S4005-Y50R Gris
tourterelle



PANTONE 18-1438
Marsala



RAL 6021 Vert pâle



PIÈTEMENTS

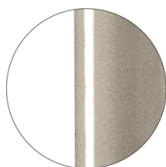
AC ACIER



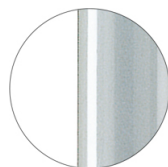
RAL 9016
VR Blanc signalisation
☀



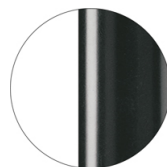
RAL 9010
VR Blanc pur
☀



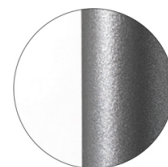
PANTONE 402 C
VR Gris tourterelle
☀



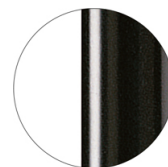
RAL 9006
VR Aluminium blanc
☀



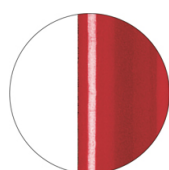
RAL 7016
VR Gris anthracite
☀



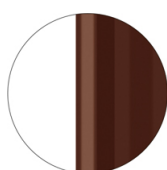
VR Etain
☀



RAL 9005
VR Noir foncé
☀



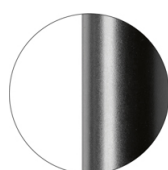
RAL 3003
VR Rouge rubis
☀



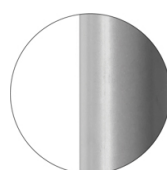
RAL 8017
VR Brun chocolat
☀



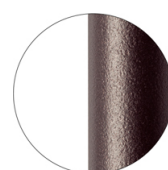
RAL 6005
VR Vert mousse
☀



RAL 9005
VR Noir foncé opaque
☀



RAL 7037
VR Gris poussière
opaque
☀



VR Bronze métallique
texturé
☀



CR Chromé

CERTIFICATIONS

- > UNI/EN 16139:2013 - Par.4 Sicurezza. 4.3 Stabilità (07/07/17)
- > UNI/EN 16139:2013 - Par.6 Prova 13. Prova di carico statico delle gambe laterali: 2-Uso estremo (27/07/17)
- > UNI/EN 16139:2013 - Par.6. Prova 12. Prova di carico statico delle gambe anteriori: 2-Uso estremo (27/07/17)
- > UNI/EN 16139:2013 - Par.6. Prova 8. Prova di fatica sedile e schienale: 2-Uso estremo (21/07/17)

Uni-Ka 604M



UNI-KA COLLECTION:

Uni-Ka 594, Uni-Ka 594M, Uni-Ka 595, Uni-Ka 595M, Uni-Ka 596, Uni-Ka 596M, Uni-Ka 597-DP, Uni-Ka 597-DR, Uni-Ka 597M-DP, Uni-Ka 597M-DR, Uni-Ka 598, Uni-Ka 598M, Uni-Ka 599M, Uni-Ka 599, Uni-Ka 600, Uni-Ka 600M, Uni-Ka 601, Uni-ka 601M, Uni-Ka 601, Uni-Ka 604M,



FAUTEUIL DESIGN:

Fauteuil lounge avec châssis en acier 4 pieds et coque en polypropylène rembourrée.

POIDS

9,25 Kg

EMBALLAGE

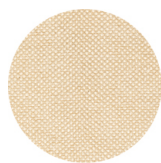
0,31 m³

PIÈCES PAR CARTON

1

FINITIONS SIÈGES

TE TISSUS



Sawana Davis
+ 24 couleurs



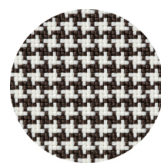
Citadel Camira
+ 16 couleurs



Inca Abitex
+ 15 couleurs



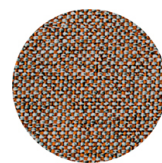
Medley Gabriel
+ 14 couleurs



Go-Couture Gabriel
+ 8 couleurs



Crazy Flukso
+ 7 couleurs



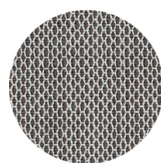
Rivet Camira
+ 12 couleurs



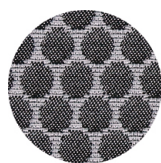
Xtreme Camira
+ 16 couleurs



Valencia Spradling
+ 17 couleurs



Criss Cross Gabriel
+ 19 couleurs



Bubble Flukso
+ 9 couleurs



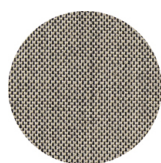
Europost 2 Gabriel
+ 16 couleurs



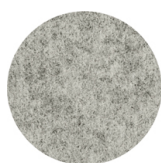
Fame Gabriel
+ 23 couleurs



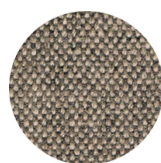
Parotega NF
Skai Hornschuch
+ 8 couleurs



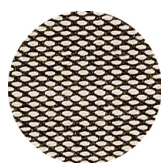
Balta Vescom
+ 12 couleurs



Blazer Camira
+ 25 couleurs



Main line flax Camira
+ 13 couleurs



Steelcut trio 3
Kvadrat
+ 20 couleurs

PP POLYPROPYLÈNE



RAL 9016 Blanc
signalisation
≡



RAL 3000 Rouge feu
≡



RAL 7016 Gris
anthracite
≡



RAL 2003 Orangé
pastel
≡



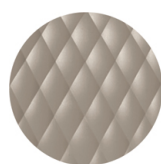
NCS S7005-Y50R
Cacao
≡



RAL 9005 Noir foncé
≡



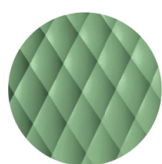
PANTONE 380 C
Vert boss
≡



NCS S4005-Y50R Gris
tourterelle
≡



PANTONE 18-1438
Marsala
≡



RAL 6021 Vert pâle
≡

PIÈTEMENTS

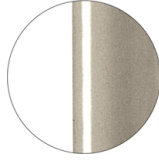
AC ACIER



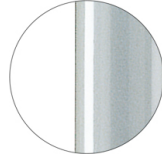
RAL 9016
VR Blanc signalisation
☀



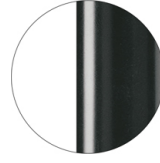
RAL 9010
VR Blanc pur
☀



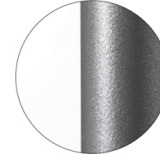
PANTONE 402 C
VR Gris tourterelle
☀



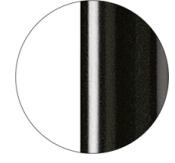
RAL 9006
VR Aluminium blanc
☀



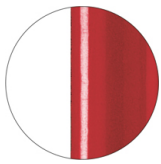
RAL 7016
VR Gris anthracite
☀



VR Etain
☀



RAL 9005
VR Noir foncé
☀



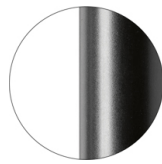
RAL 3003
VR Rouge rubis
☀



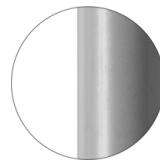
RAL 8017
VR Brun chocolat
☀



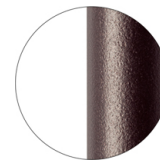
RAL 6005
VR Vert mousse
☀



RAL 9005
VR Noir foncé opaque
☀



RAL 7037
VR Gris poussière
opaque
☀



VR Bronze métallique
texturé
☀



CR Chromé