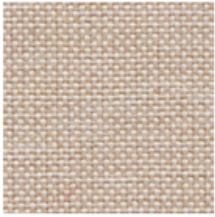


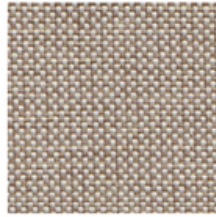
# P AND P RANGE FABRIC OPTIONS



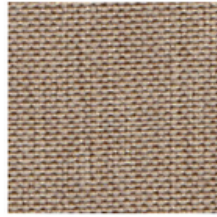
STOFFE  
ANGEL



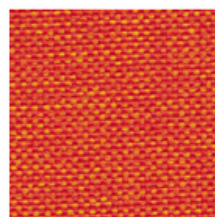
ANGEL 54 PAGLIA



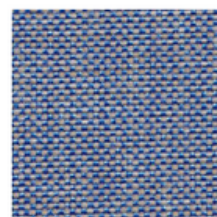
ANGEL 53 LINO



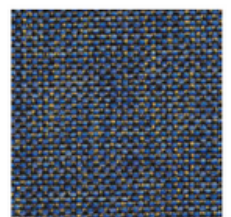
ANGEL 50 CREMA



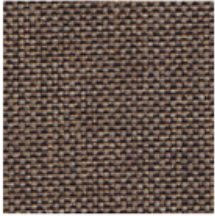
ANGEL 30 MANDARINO



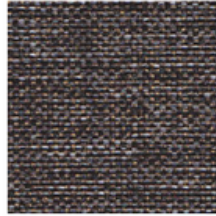
ANGEL 55 SKY



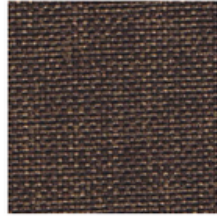
ANGEL 39 BLUETTE



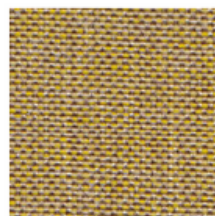
ANGEL 45 VISONE



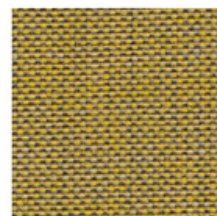
ANGEL 43 TERRA



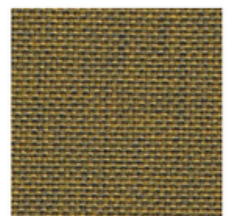
ANGEL 20 TESTA MORO



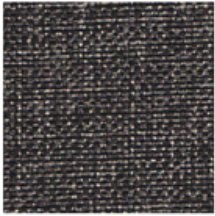
ANGEL 46 CANARINO



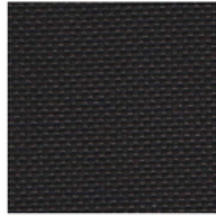
ANGEL 41 SENAPE



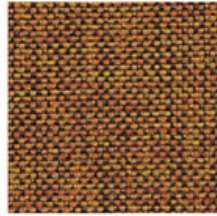
ANGEL 09 VERDE



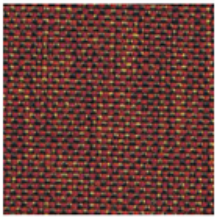
ANGEL 56 NERO



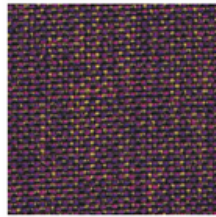
ANGEL 57 CARBONE



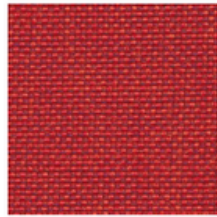
ANGEL 14 MATTONE



ANGEL 36 BAROLO



ANGEL 38 VIOLA



ANGEL 35 PRUGNA

ANGEL

COMPOSIZIONE / COMPOSITION

100% PL

RESISTENZA ALL'ABRASIONE / ABRASION RESISTANCE:

>70.000 CICLI-RUBS

IDROREPELLENTE / WATER REPELLENT

RESISTENZA AL FUOCO / FIRE RETARDANT:

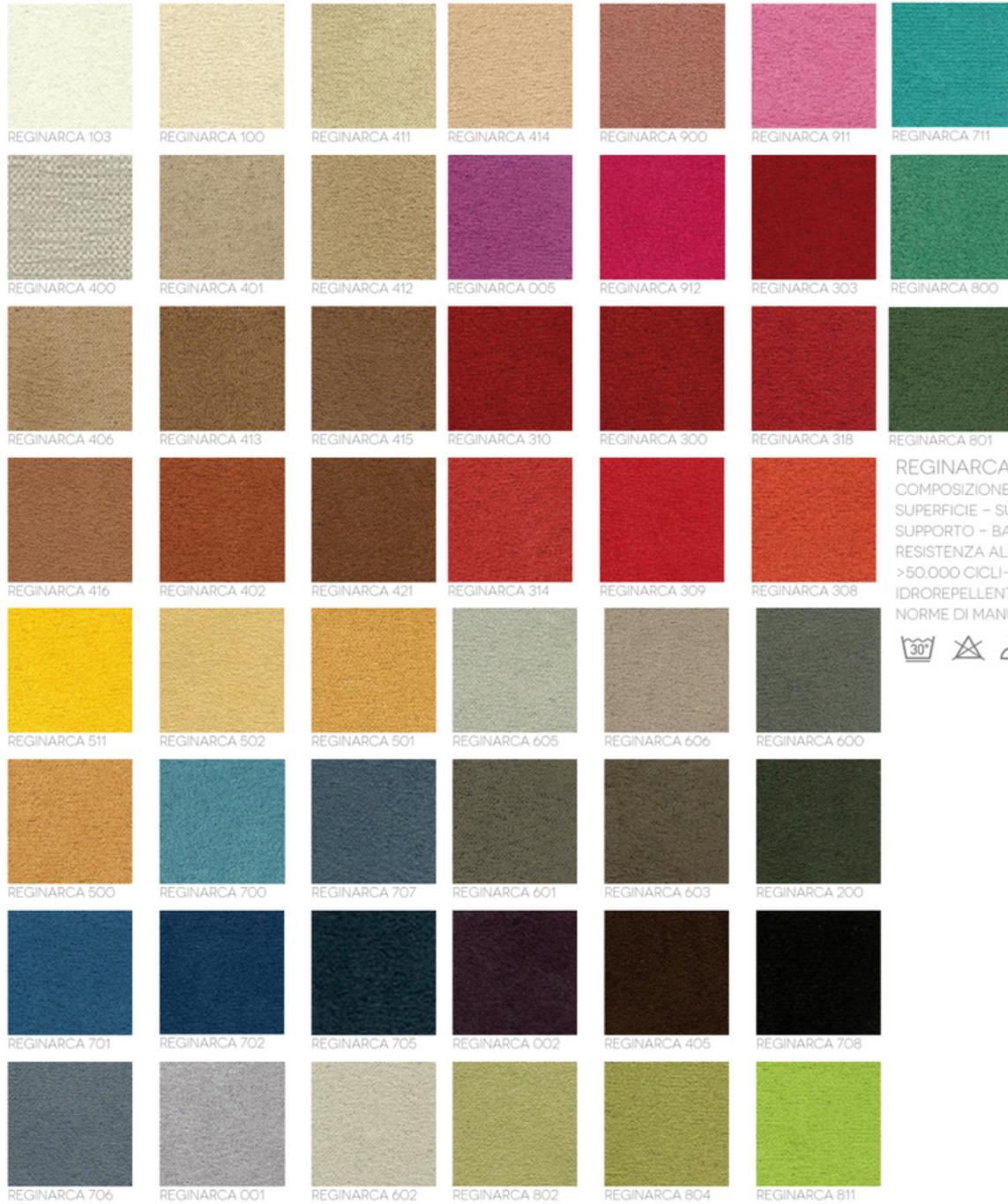
UNI 9175 CLASS 1 M - EN 1021-1:2006 - EN 1021-2:2006

NORME DI MANUTENZIONE / CLEANING:





STOFFE  
REGINARCA



REGINARCA 103

REGINARCA 100

REGINARCA 411

REGINARCA 414

REGINARCA 900

REGINARCA 911

REGINARCA 711

REGINARCA 400

REGINARCA 401

REGINARCA 412

REGINARCA 005

REGINARCA 912

REGINARCA 303

REGINARCA 800

REGINARCA 406

REGINARCA 413

REGINARCA 415

REGINARCA 310

REGINARCA 300

REGINARCA 318

REGINARCA 801

REGINARCA 416

REGINARCA 402

REGINARCA 421

REGINARCA 314

REGINARCA 309

REGINARCA 308

REGINARCA 511

REGINARCA 502

REGINARCA 501

REGINARCA 605

REGINARCA 606

REGINARCA 600

REGINARCA 500

REGINARCA 700

REGINARCA 707

REGINARCA 601

REGINARCA 603

REGINARCA 200

REGINARCA 701

REGINARCA 702

REGINARCA 705

REGINARCA 002

REGINARCA 405

REGINARCA 708

REGINARCA 706

REGINARCA 001

REGINARCA 602

REGINARCA 802

REGINARCA 804

REGINARCA 811

**REGINARCA**  
 COMPOSIZIONE / COMPOSITION  
 SUPERFICIE - SURFACE 100% PL  
 SUPPORTO - BAKING 50% CO - 50% PL  
 RESISTENZA ALL'ABRASIONE / ABRASION RESISTANCE:  
 >50.000 CICLI-RUBS  
 IDROREPELLENTE / WATER REPELLENT  
 NORME DI MANUTENZIONE / CLEANING:



ECOPELLI  
BIG BANG



**BIG BANG**

COMPOSIZIONE / COMPOSITION

50% PVC - 32,5% PL - 17,5% CO

RESISTENZA ALL'ABRASIONE / ABRASION RESISTANCE:

>100.000 CICLI-RUBS

IDROREPELLENTE / WATER REPELLENT

RESISTENZA AL FUOCO / FIRE RETARDANT:

EN 1021-1:2006 - EN 1021-2:2006

NORME DI MANUTENZIONE / CLEANING:



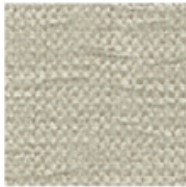




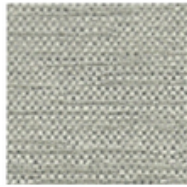
STOFFE  
CALIENTE



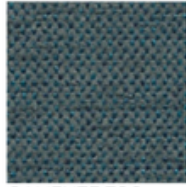
CALIENTE 100



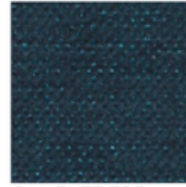
CALIENTE 400



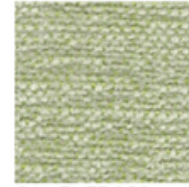
CALIENTE 602



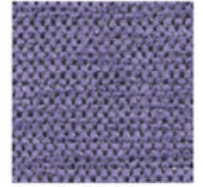
CALIENTE 700



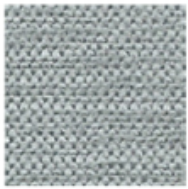
CALIENTE 705



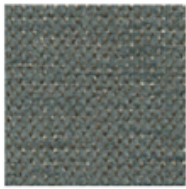
CALIENTE 802



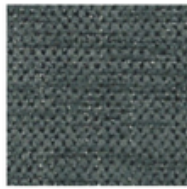
CALIENTE 001



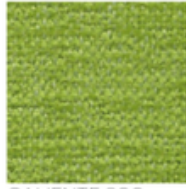
CALIENTE 605



CALIENTE 603



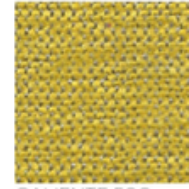
CALIENTE 600



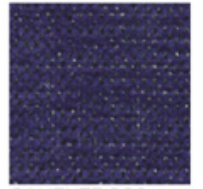
CALIENTE 800



CALIENTE 801



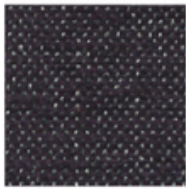
CALIENTE 500



CALIENTE 003



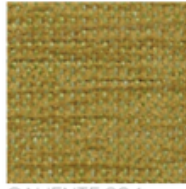
CALIENTE 200



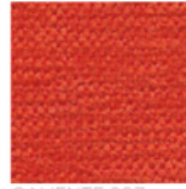
CALIENTE 002



CALIENTE 405



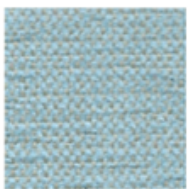
CALIENTE 804



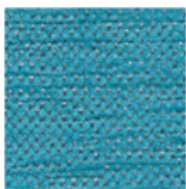
CALIENTE 307



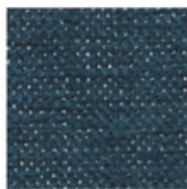
CALIENTE 309



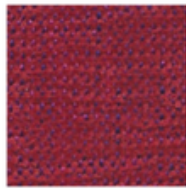
CALIENTE 703



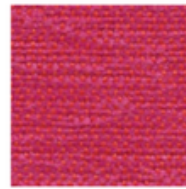
CALIENTE 701



CALIENTE 702



CALIENTE 901



CALIENTE 900



CALIENTE 911



ECOPELLI  
INCA



INCA

COMPOSIZIONE / COMPOSITION

88% PVC - 6% PL - 6% CO

RESISTENZA ALL'ABRASIONE / ABRASION RESISTANCE:

>50.000 CICLI-RUBS

IDROREPELENTE / WATER REPELLENT

RESISTENZA AL FUOCO / FIRE RETARDANT:

UNI 9175 CLASS 1 M - EN 1021-1:2006 - EN 1021-2:2006

NORME DI MANUTENZIONE / CLEANING:



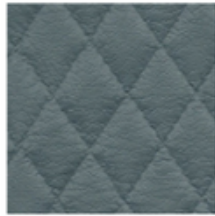
ECOPELLI  
MAGNUM GF LOS



MAGNUM 111



MAGNUM 600



MAGNUM 601



MAGNUM 101



MAGNUM 508



MAGNUM 400



MAGNUM 607



MAGNUM 606



MAGNUM 902



MAGNUM 111



MAGNUM 600



MAGNUM 601

MAGNUM GF LOS

COMPOSIZIONE / COMPOSITION

88% PVC - 7% PL - 4% CO - 1% PU

RESISTENZA ALL'ABRASIONE / ABRASION RESISTANCE:

>200.000 CICLI-RUBS

IDROREPELENTE / WATER REPELLENT

RESISTENZA AL FUOCO / FIRE RETARDANT:

EN 1021-1:2006 - EN 1021-2:2006

NORME DI MANUTENZIONE / CLEANING:





MAGNUM



MAGNUM

COMPOSIZIONE / COMPOSITION

88% PVC - 7% PL - 4% CO - 1% PU

RESISTENZA ALL'ABRASIONE / ABRASION RESISTANCE:

>200.000 CICLI-RUBS

IDROREPELLENTE / WATER REPELLENT

RESISTENZA AL FUOCO / FIRE RETARDANT:

EN 1021-1:2006 - EN 1021-2:2006

NORME DI MANUTENZIONE / CLEANING:





STOFFE  
WAVE



WAVE 111



WAVE 605



WAVE 600



WAVE 409



WAVE 416



WAVE 402



WAVE 602



WAVE 405



WAVE 603



WAVE 421



WAVE 433



WAVE 410



WAVE 404



WAVE 406



WAVE 400



WAVE 501



WAVE 503



WAVE 307



WAVE 411



WAVE 423



WAVE 900



WAVE 305



WAVE 911



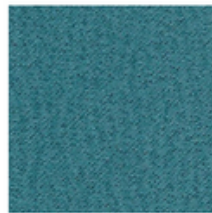
WAVE 310



WAVE 300



WAVE 707



WAVE 711



WAVE 608



WAVE 705



WAVE 200



WAVE 801

WAVE

COMPOSIZIONE / COMPOSITION

SUPERFICIE - SURFACE 100% PL

SUPPORTO - BAKING 50% CO - 50% PL

RESISTENZA ALL'ABRASIONE / ABRASION RESISTANCE:

>50.000 CICLI-RUBS

IDROREPELLENTE / WATER REPELLENT

NORME DI MANUTENZIONE / CLEANING:





ECOPELLI  
MOKA YEMEN



MOKA YEMEN 111



MOKA YEMEN 400



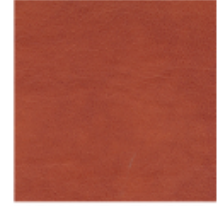
MOKA YEMEN 401



MOKA YEMEN 305



MOKA YEMEN 306



MOKA YEMEN 307



MOKA YEMEN 402



MOKA YEMEN 404



MOKA YEMEN 301



MOKA YEMEN 500



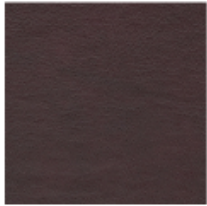
MOKA YEMEN 700



MOKA YEMEN 701



MOKA YEMEN 407



MOKA YEMEN 003



MOKA YEMEN 408



MOKA YEMEN 800



MOKA YEMEN 403



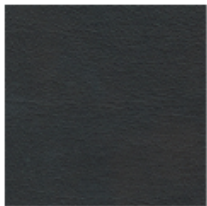
MOKA YEMEN 600



MOKA YEMEN 601



MOKA YEMEN 200



MOKA YEMEN 405



MOKA YEMEN 300

MOKA YEMEN

COMPOSIZIONE / COMPOSITION

85% PVC - 2% PU - 13% CO

RESISTENZA ALL'ABRASIONE / ABRASION RESISTANCE:

>50.000 CICLI-RUBS

IDROREPELENTE / WATER REPELLENT

NORME DI MANUTENZIONE / CLEANING:



STOFFE  
WOW



WOW

COMPOSIZIONE / COMPOSITION  
100% PL

RESISTENZA ALL'ABRASIONE / ABRASION RESISTANCE:

>70.000 CICLI-RUBS

IDROREPELLENTE / WATER REPELLENT

OLIOREPELLENTE / OIL REPELLENT

NORME DI MANUTENZIONE / CLEANING:





# Timber Finish Options



PAS 101



PAS 102



PAS 103



PAS 113



PAS 114



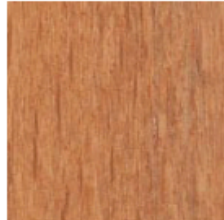
PAS 115



PAS 104



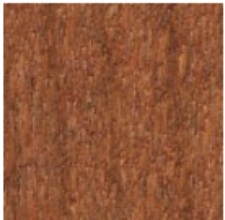
PAS 105



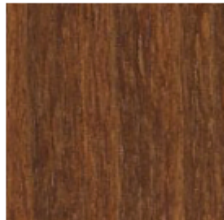
PAS 106



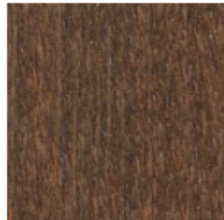
PAS 116



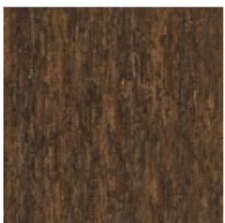
PAS 107



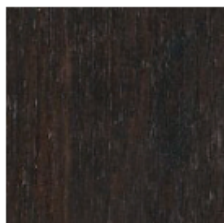
PAS 108



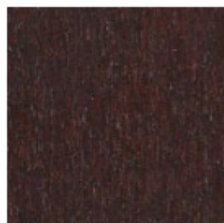
PAS 109



PAS 110



PAS 111



PAS 112