

Assembly Instructions

COMPACT LAMINATE TABLE TOPS

Drill by Hand Method

To screw into compact laminate you must have pre-drilled holes.

IMPORTANT NOTES:

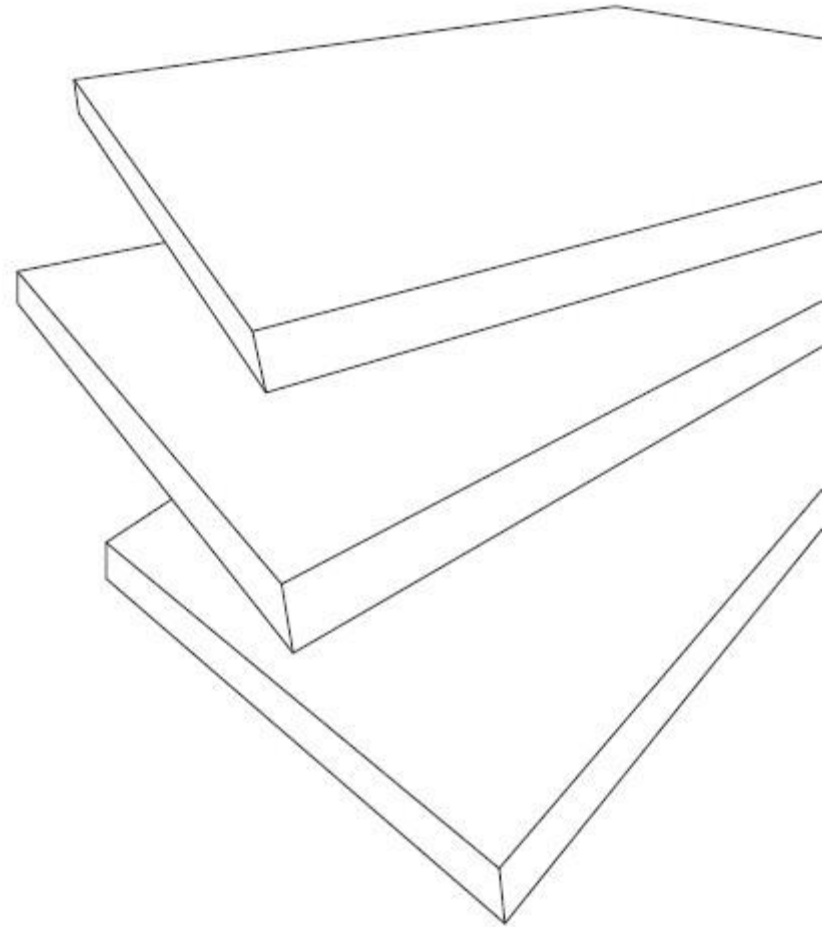
- The maximum hole depth is 10mm.
- Use M6 Flat Tipped Bolts (Not Screws).
- An M6 Bolt is 6mm Dia. (Therefore 5mm Dia Hole is recommended).
- A fixed top table requires a minimum of 4 screws.
- A flip top table requires a minimum of 8 screws.

TOOLS REQUIRED:

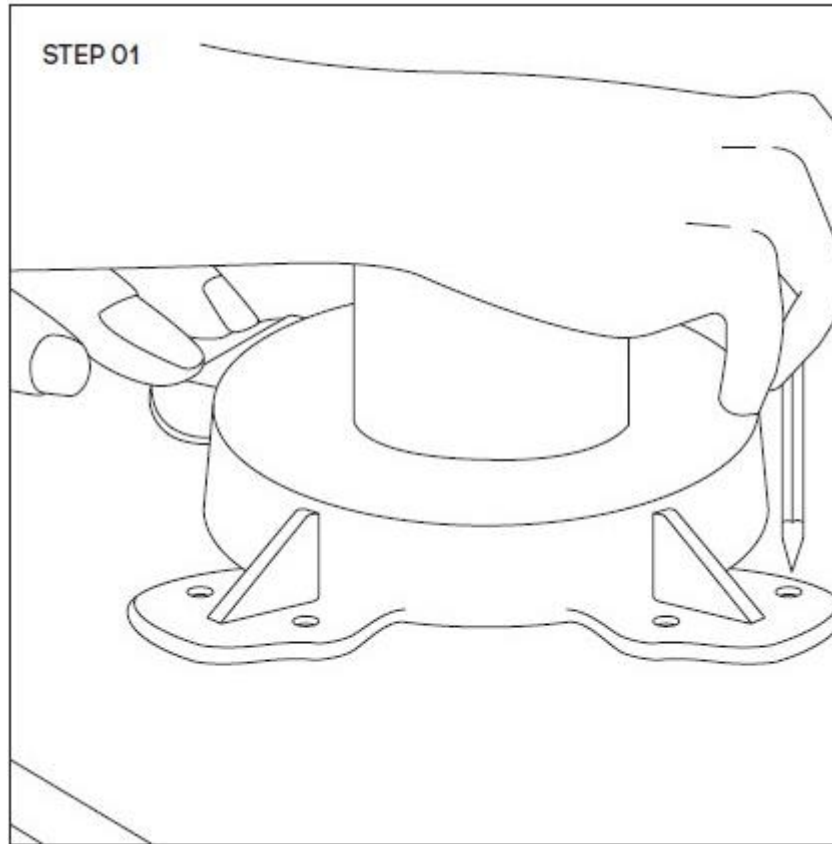
- Power screwdriver



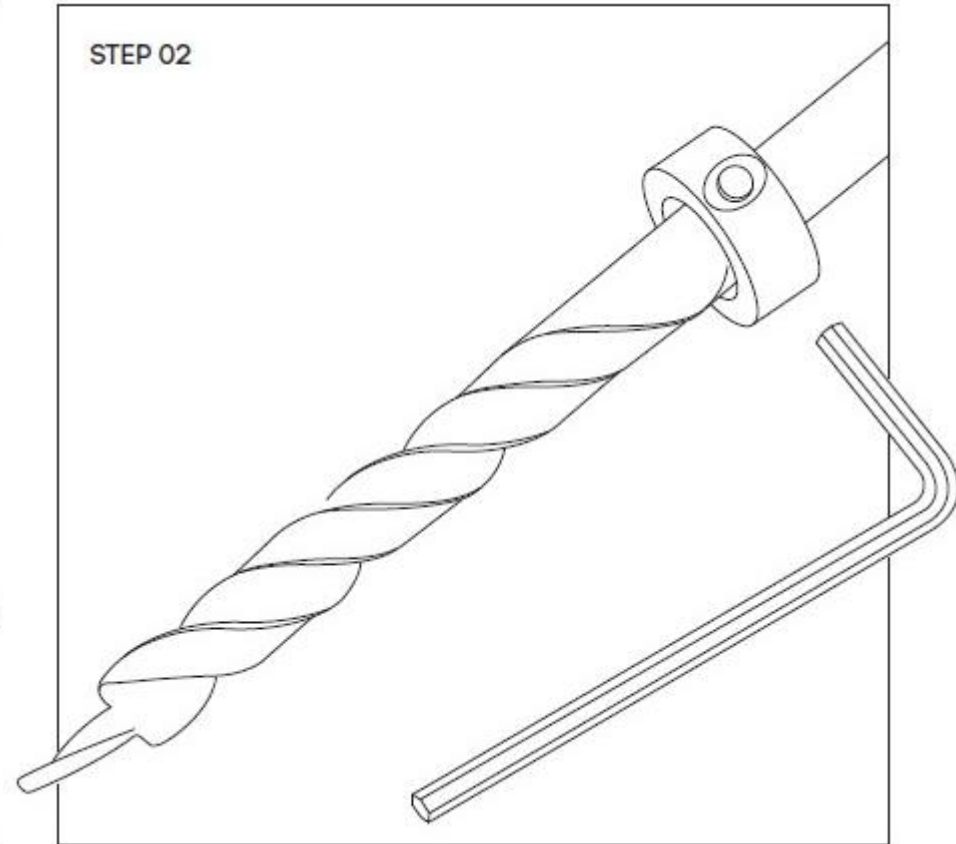
2 persons required for installation



Assembly Instructions
COMPACT LAMINATE TABLE TOPS
Drill by Hand Method

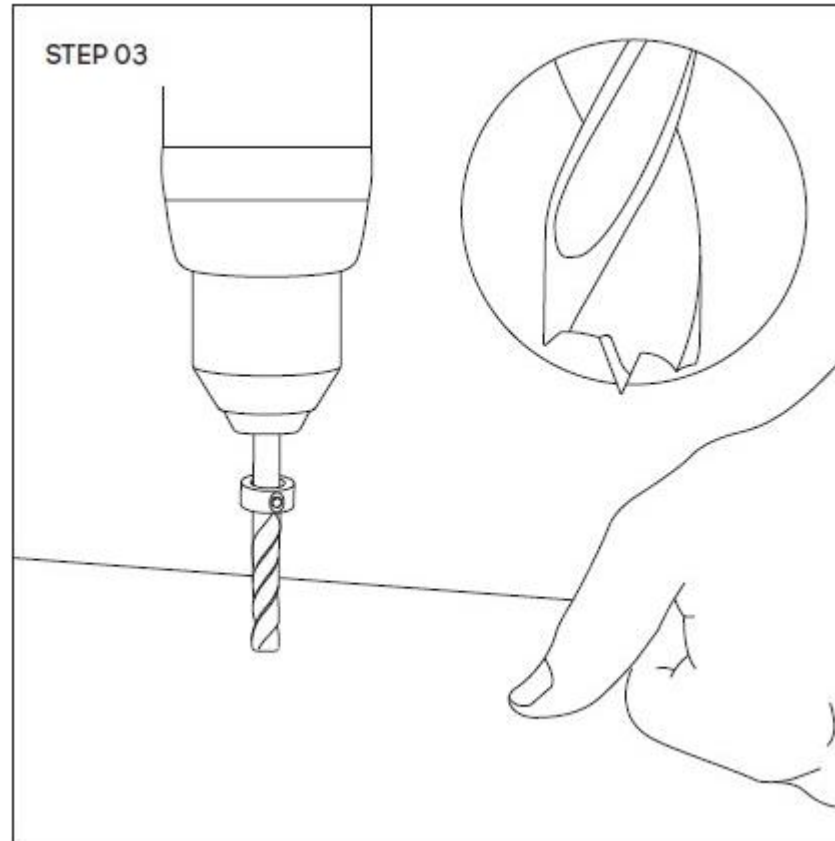


Turn the table top upside down and mark the desired location of holes.

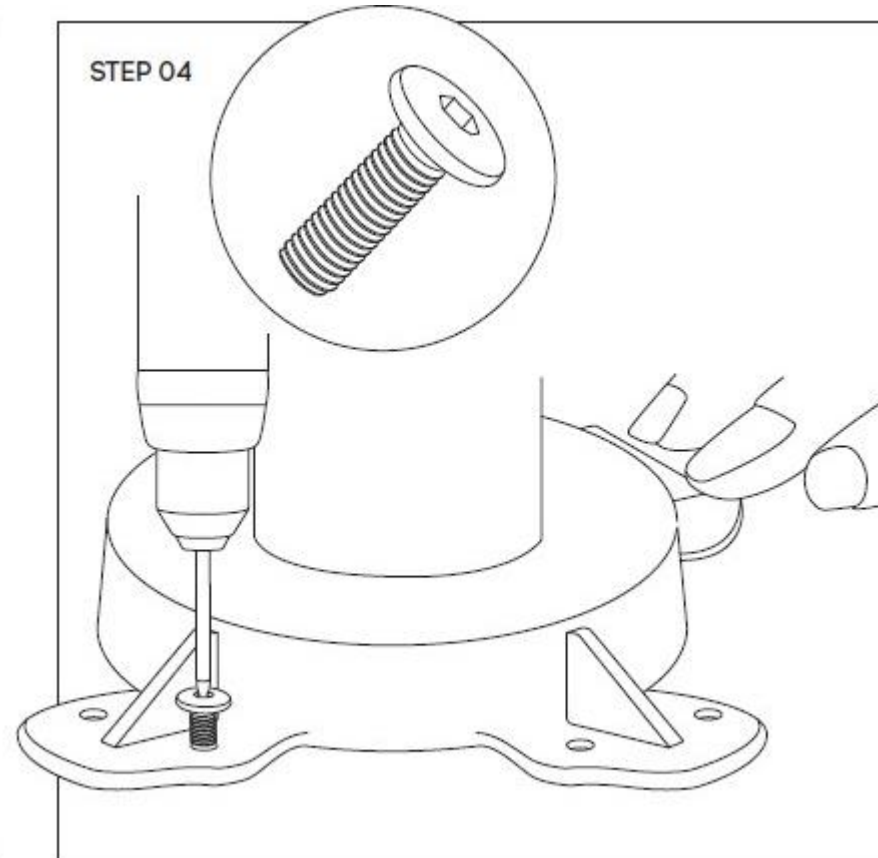


Use a STEP COLLAR of similar tool to control the maximum hole depth (10mm).

Assembly Instructions
COMPACT LAMINATE TABLE TOPS
Drill by Hand Method



Drill using a TWIST drill bit – Not spade or forstner.
Take extra precaution – Do not drill through the table top.



Insert M6 flat bottomed bolts with washers