

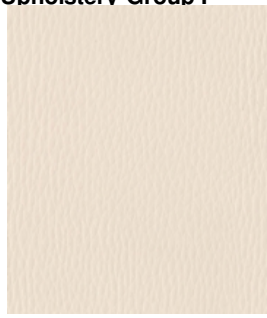
**DOLARO-Tapicerka/Upholstery-Group I**



**DOLARO 1**



**DOLARO 2**



**DOLARO 3**



**DOLARO 4**



**DOLARO 5**



**DOLARO 6**



**DOLARO 7**



**DOLARO 8**



**DOLARO 9**



**DOLARO 10**



**DOLARO 11**



**DOLARO 12**



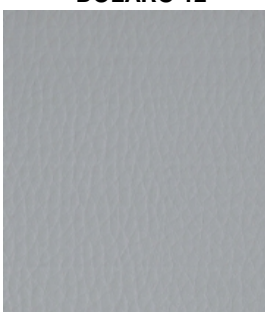
**DOLARO 13**



**DOLARO 14**



**DOLARO 15**



**DOLARO 16**



**DOLARO 17**



**DOLARO 18**



**DOLARO 19**

SKŁAD/COMPOSITION:  
66% PVC, 23% PES, 11% PU

GRAMATURA/WEIGHT:  
600 g/m<sup>2</sup>

SZEROKOŚĆ/WIDTH:  
140 cm

MARTINDALE TEST:  
120 000 cykli/cycles

**EN 1021 1**

**PERSEMPRA-Tapicerka/Upholstery-Group I**



**PERSEMPRA 1**



**PERSEMPRA 3**



**PERSEMPRA 4**



**PERSEMPRA 6**



**PERSEMPRA 15**



**PERSEMPRA 18**



**PERSEMPRA 19**



**PERSEMPRA 20**



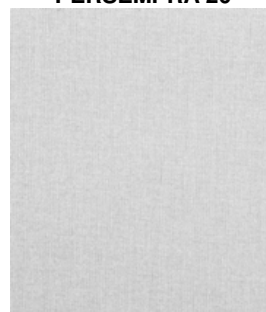
**PERSEMPRA 21**



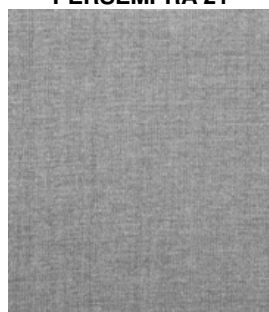
**PERSEMPRA 22**



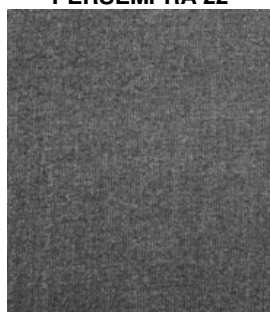
**PERSEMPRA 24**



**PERSEMPRA 14**



**PERSEMPRA 13**



**PERSEMPRA 12**



**PERSEMPRA 26**



**PERSEMPRA 27**



**PERSEMPRA 5**



**PERSEMPRA 8**



**PERSEMPRA 10**



**PERSEMPRA 11**

SKŁAD/COMPOSITION:  
100% PES

GRAMATURA/WEIGHT:  
340 g/m<sup>2</sup>

SZEROKOŚĆ/WIDTH:  
138/140 cm

MARTINDALE TEST:  
165 000 cykli/cycles

PILING/PILLING:  
5

**EN 1021 1**

**RIVER-Tapicerka/Upholstery-Group I**



**RIVER 1**



**RIVER 2**



**RIVER 3**



**RIVER 4**



**RIVER 5**



**RIVER 6**



**RIVER 7**



**RIVER 8**



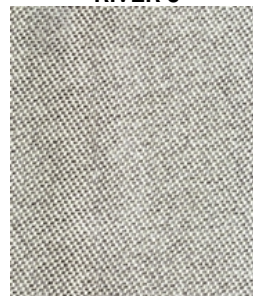
**RIVER 9**



**RIVER 10**



**RIVER 11**



**RIVER 12**



**RIVER 13**



**RIVER 14**

SKŁAD/COMPOSITION:  
41% PES, 59%PP

GRAMATURA/WEIGHT:  
390 g/m<sup>2</sup>

SZEROKOŚĆ/WIDTH:  
142 cm

MARTINDALE TEST:  
40 000 cykli/cycles

PILING/PILLING:  
4

**BS 5852:2006**

**HERON-Tapicerka/Upholstery-Group I**



**SAMIR Calico 26**



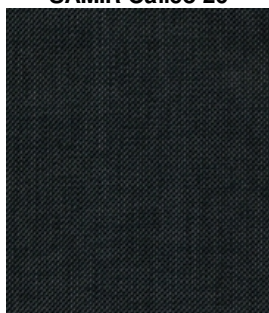
**SAMIR Icycle 13**



**SAMIR Silver 33**



**HERON Toffee 31**



**HERON Grey 00**



**HERON Cobalt 66**



**HERON Black 25**



**ENDER Biscuit 41**



**ENDER Sponge 34**



**ENDER Dust 11**



**ENDER Emerald 19**



**ENDER Chrome 20**

SKŁAD/COMPOSITION:  
**ENDER:** 54% PES, 46% AC  
**HERON:** 100%PES  
**SAMIR:** 100%PES

GRAMATURA/WEIGHT:  
 320 g/m<sup>2</sup>  
 380 g/m<sup>2</sup>  
 280 g/m<sup>2</sup>

SZEROKOŚĆ/WIDTH:  
 143 cm  
 145 cm  
 142 cm

MARTINDALE TEST:  
 30 000 cykli/cycles  
 20 000 cykli/cycles  
 30 000 cykli/cycles

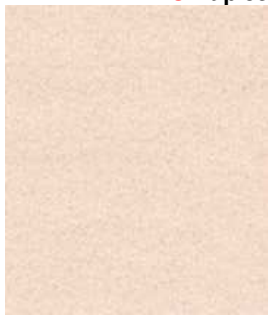
PILING/PILLING:  
 4  
 4  
 4

**EN 1021 1**

**ADAMANTIO-Tapicerka/Upholstery-Group II**



**ADAMANTIO 318**



**ADAMANTIO 352**



**ADAMANTIO 368**



**ADAMANTIO 369**



**ADAMANTIO 330**



**ADAMANTIO 329**



**ADAMANTIO 357**



**ADAMANTIO 361**



**ADAMANTIO 307**



**ADAMANTIO 364**



**ADAMANTIO 394**



**ADAMANTIO 390**



**ADAMANTIO 386**



**ADAMANTIO 388**



**ADAMANTIO 382**



**ADAMANTIO 372**



**ADAMANTIO 306**



**ADAMANTIO 389**



**ADAMANTIO 395**



**ADAMANTIO 355**

SKŁAD/COMPOSITION:  
100% PES

GRAMATURA/WEIGHT:  
457 g/m<sup>2</sup>

SZEROKOŚĆ/WIDTH:  
140 cm

MARTINDALE TEST:  
100 000 cykli/cycles

PILING/PILLING:  
4

**EN 1021 1**

**CARABU-Tapicerka/Upholstery-Group II**



**CARABU 86**



**CARABU 66**



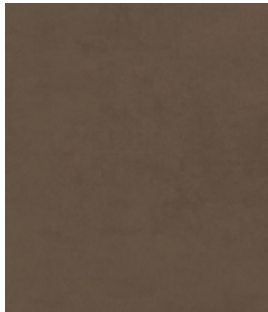
**CARABU 102**



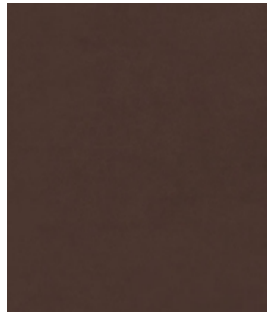
**CARABU 108**



**CARABU 69**



**CARABU 57**



**CARABU 72**



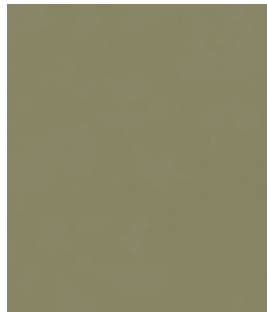
**CARABU 131**



**CARABU 94**



**CARABU 75**



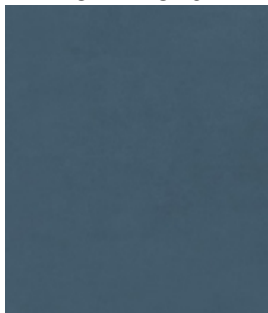
**CARABU 49**



**CARABU 80**



**CARABU 78**



**CARABU 132**



**CARABU 109**



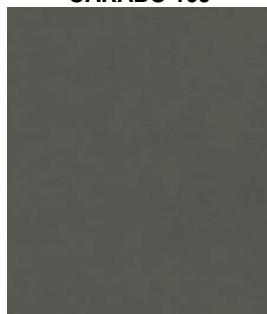
**CARABU 76**



**CARABU 77**



**CARABU 110**



**CARABU 91**



**CARABU 33**

SKŁAD/COMPOSITION:  
50% PES, 35% AC, 15%PA

GRAMATURA/WEIGHT:  
410 g/m<sup>2</sup>

SZEROKOŚĆ/WIDTH:  
140 cm

MARTINDALE TEST:  
250 000 cykli/cycles

PILING/PILLING  
4

**EN 1021 1-2, BS 5852 1-2**

**JAPAN-Tapicerka/Upholstery-Group II**



**TOKYO T108**



**TOKYO T110**



**TOKYO T112**



**TOKYO T60**



**TOKYO T6**



**TOKYO T184**



**TOKYO T182**



**TOKYO T122**



**TOKYO T10**



**TOKYO T258**



**TOKYO T9**



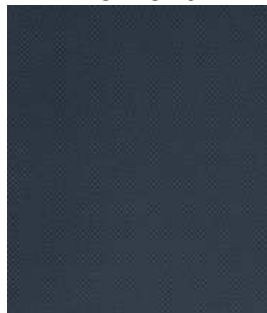
**TOKYO T188**



**TOKYO T101**



**TOKYO T3**



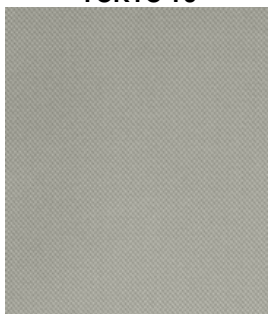
**TOKYO T115**



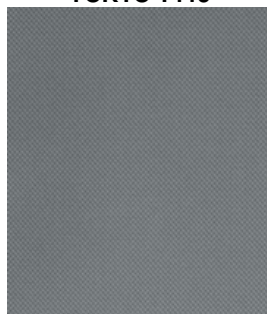
**TOKYO T119**



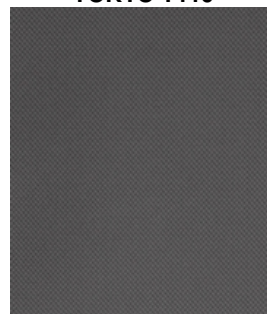
**TOKYO T4**



**TOKYO T207**



**TOKYO T120**



**TOKYO T118**



**TOKYO T2**

SKŁAD/COMPOSITION:  
100% PES

GRAMATURA/WEIGHT:  
480 g/m<sup>2</sup>

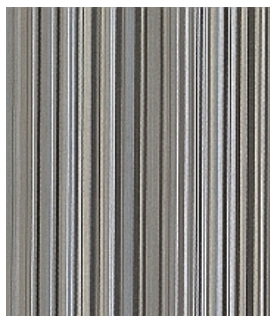
SZEROKOŚĆ/WIDTH:  
140 cm

MARTINDALE TEST:  
100 000 cykli/cycles

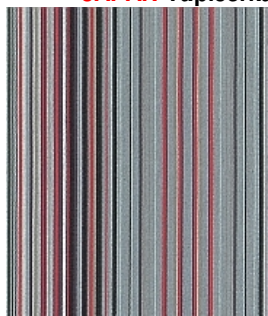
PILING/PILLING:  
5

**EN 1021 1**

**JAPAN-Tapicerka/Upholstery-Group II**



**RIGA JAPAN R203**



**RIGA JAPAN R204**



**RIGA JAPAN R206**



**RIGA JAPAN R198**

**Tkanina „Riga” nie nadaje się do tapicerowania modeli: B-1404 i A, BST-1412/Fabric „Riga” ist not suitable for upholsering of**

SKŁAD/COMPOSITION:  
100% PES

GRAMATURA/WEIGHT:  
321 g/m<sup>2</sup>

SZEROKOŚĆ/WIDTH:  
140 cm

MARTINDALE TEST:  
23 000 cykli/cycles

PILING/PILLING:  
3/4

**EN 1021 1**



**NORDIC-Tapicerka/Upholstery-Group II**



**NORDIC 101**



**NORDIC 114**



**NORDIC 108**



**NORDIC 104**



**NORDIC 127**



**NORDIC 111**



**NORDIC 113**



**NORDIC 129**



**NORDIC 118**



**NORDIC 119**



**NORDIC 125**



**NORDIC 120**



**NORDIC 128**



**NORDIC 130**



**NORDIC 131**



**NORDIC 121**



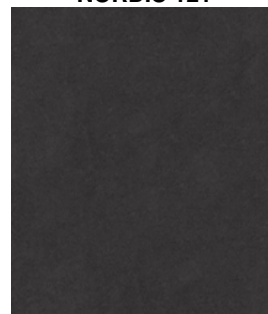
**NORDIC 115**



**NORDIC 116**



**NORDIC 117**



**NORDIC 132**

SKŁAD/COMPOSITION:  
50% PES, 35% AC, 15% PA

GRAMATURA/WEIGHT:  
410 g/m<sup>2</sup>

SZEROKOŚĆ/WIDTH:  
140 cm

MARTINDALE TEST:  
100 000 cykli/cycles

PILING/PILLING:  
4

**EN 1021 1-2, BS 5852 1-2**

**SERENATA-Tapicerka/Upholstery-Group II**



**SERENATA 3**



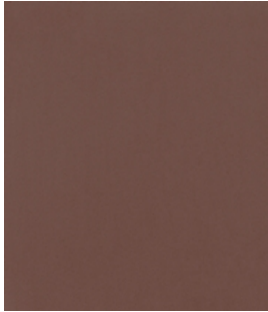
**SERENATA 5**



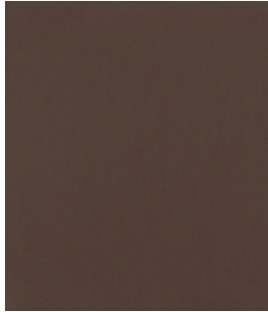
**SERENATA 9**



**SERENATA 12**



**SERENATA 11**



**SERENATA 13**



**SERENATA 29**



**SERENATA 31**



**SERENATA 24**



**SERENATA 25**



**SERENATA 32**



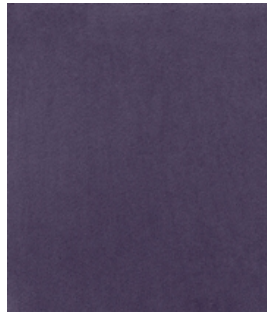
**SERENATA 33**



**SERENATA 28**



**SERENATA 19**



**SERENATA 17**



**SERENATA 23**



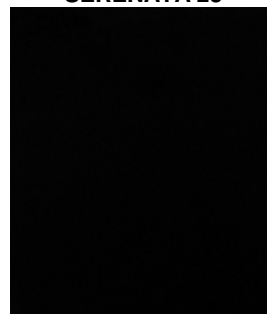
**SERENATA 36**



**SERENATA 38**



**SERENATA 40**



**SERENATA 42**

SKŁAD/COMPOSITION:  
100% PES

GRAMATURA/WEIGHT:  
304 g/m<sup>2</sup>

SZEROKOŚĆ/WIDTH:  
138/140 cm

MARTINDALE TEST:  
70 000 cykli/cycles

PILING/PILLING:  
4/5

**EN 1021 1**

**ZERO SPOT-Tapicerka/Upholstery-Group II**



**ZERO SPOT 130**



**ZERO SPOT 110**



**ZERO SPOT 132**



**ZERO SPOT 108**



**ZERO SPOT 121**



**ZERO SPOT 138**



**ZERO SPOT 139**



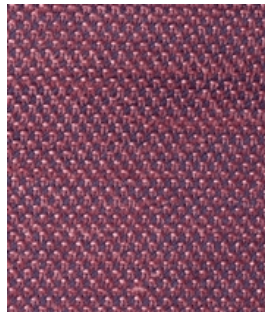
**ZERO SPOT 115**



**ZERO SPOT 102**



**ZERO SPOT 103**



**ZERO SPOT 136**



**ZERO SPOT 125**



**ZERO SPOT 117**



**ZERO SPOT 135**



**ZERO SPOT 122**



**ZERO SPOT 123**



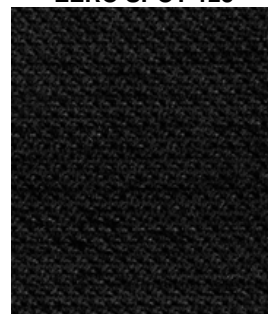
**ZERO SPOT 141**



**ZERO SPOT 119**



**ZERO SPOT 116**



**ZERO SPOT 126**

Tkanina „Zero Spot” nie nadaje się to tapicerowania modelu B-1404/Fabric „Zero Spot” ist not suitable for upholstery of model B-1404

SKŁAD/COMPOSITION:  
100% PES

GRAMATURA/WEIGHT:  
449 g/m<sup>2</sup>

SZEROKOŚĆ/WIDTH:  
138 cm

MARTINDALE TEST:  
70 000 cykli/cycles

PILING/PILLING:  
4/5

EN 1021 1

**WOOL-Tapicerka/Upholstery-Group III**



**WOOL 1016**



**WOOL 1037**



**WOOL 2151**



**WOOL 1026**



**WOOL 1008**



**WOOL 1008B**



**WOOL 2272**



**WOOL 2259**



**WOOL 2079**



**WOOL 1010**



**WOOL 2012B**



**WOOL 2011**



**WOOL 1044**



**WOOL 2255**



**WOOL 2141**



**WOOL 2279**



**WOOL 1007**



**WOOL 1000**



**WOOL 1001**



**WOOL 1003**

SKŁAD/COMPOSITION:  
70% WO, 25% PA, 5% AF

GRAMATURA/WEIGHT:  
600 g/m<sup>2</sup>, 400 g/m<sup>2</sup>

SZEROKOŚĆ/WIDTH:  
150 cm

MARTINDALE TEST:  
40 000 cykli/cycles

PILING/PILLING:  
4/5

**BS 5852-1:1979**

**MADRAS (leather)-Tapicerka/Upholstery-Group III**



**MADRAS K1**



**MADRAS K11**



**MADRAS K15**



**MADRAS B29**



**MADRAS K60**



**MADRAS K56**



**MADRAS K21**



**MADRAS K23**



**MADRAS K70**

GATUNEK SKÓRY/LEATHER TYPE:  
Skóra bydłęca/Cattle leather

ŚREDNI ROZMIAR/MEDIUM SIZE:  
4 m<sup>2</sup>

LICO/SKIN SIDE:  
Wytłoczone/Embossed

POCHODZENIE/ORIGIN:  
Europejskie/European

GRUBOŚĆ/THICKNESS:  
0,9-1,1 mm

RODZAJ SKÓRY/LEATHER KIND  
Lico korygowane/Skin side corrected

GARBOWANIE/TANNING:  
Chromowe/Chromium