

PR and VR series Accessories Guide

For supporting your great range of embroidering needs

We have been creating a range of accessories not only for hobby purpose, but also for business purpose. Your PR/VR machine can be utilized for many different embroidering works by combine-using these multi-accessories.



Entrepreneur Pro X

PR1065X



10-Needle Home Embroidery Machine with Built-in Camera

Maximum sewing area:
360 x 360 mm (14 x 14 in)

Entrepreneur W

PR680W



6-Needle Home Embroidery Machine with Cross-hair Laser

Maximum sewing area:
300 x 200 mm (12 x 8 in)

PRS100 / VR



1-Needle Home Embroidery Machine with LED Positioning Marker

Maximum sewing area:
200 x 200 mm (8 x 8 in)

PR Series Features

- Extensive range of accessories
- Portability
- Automatic Needle Threading
- LCD Screen
- Automatic Frame Detector

Easy hooping and centering with scratch-free

Flat brim cap frame

PRCF5/PRCF5AP

	PR1055X	PR680W	PRS100/VR
130 x 60 mm (5 x 2.4 in)	✓	✓	✓



Can go close to the brim, included brim cover



Sliding and ratchet frame fixing



More wide range of caps can be used

Embroider completed caps

Cap Frame

PRCF3

	PR1055X	PR680W	PRS100/VR
130 x 60 mm (5 x 2.4 in)	✓	✓	✓



Set completed cap directly onto the machine



Stretch the cap over the frame



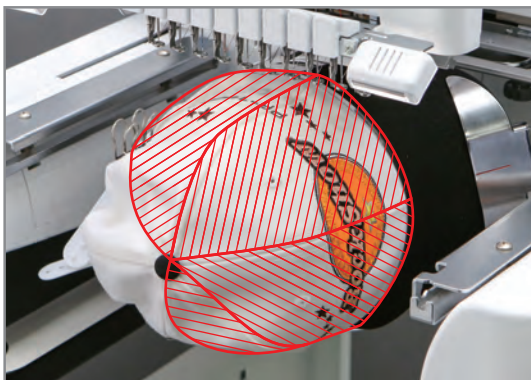
Embroider over a wider area

Embroider over a wider area

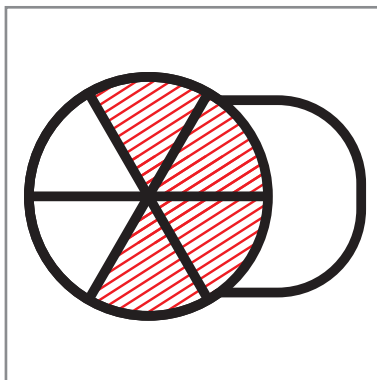
Wide Cap Frame

PRPCF1

	PR1055X	PR680W	PRS100/VR
360 x 60 mm (14 x 2.4 in)	✓		



Embroider right up to the edge



4 sections to which embroidery can be applied



Greater area for embroidery designs

Hooping thick materials with ease, avoid fabric shifting

Magnetic sash frame

PRMS360/PRMS360AP

	PR1055X	PR680W	PRS100/VR
360 x 200 mm (14 x 8 in)	✓	✓ *	

*300 x 200 on 6 needle machine



Easy hooping, only put magnet pieces



Keep thick materials



Easy to connect pattern, only slide the material



Included Leverage magnet lifter, easy to remove the magnetic pieces



Good for quilt sashing, too



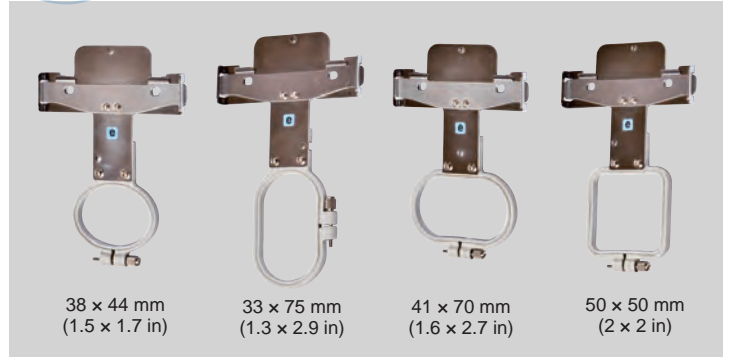
Wide embroidery area

Difficult-to-sew pockets and other small parts made easy

Compact Frame/S Frame

PRHCK1/PRSFK1/PRHCK1AP

	PR1055X	PR680W	PRS100/VR
38 x 44 mm (1.5 x 1.7 in)	✓	✓	✓
41 x 70 mm (1.6 x 2.7 in)	✓	✓	✓
33 x 75 mm (1.3 x 2.9 in)	✓	✓	✓
50 x 50 mm (2 x 2 in)	✓	✓	✓



Embroidery is possible even in small spaces such as pockets, and support for automatic frame detection ensures both safety and peace-of-mind

Perfect for vertically long areas

Sleeve Frame

PRHSL200/PRHSL200AP

	PR1055X	PR680W	PRS100/VR
70 x 200 mm (2.7 x 8 in)	✓	✓	



Perfect for embroidery of vertically long areas such as pants and sleeves

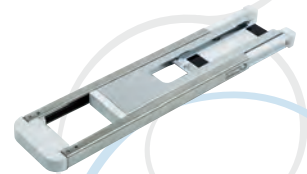
Can also be used for infant rompers and children's shirts

One hand operation for attaching and extending

Tubular frame table

PRTT1/PRTT1AP

PR1055X	PR680W	PRS100/VR
✓	✓	✓



One hand operation for attaching and extending

Supporting heavy tubular materials stable

Minimum space with storing flat mechanism

Easiest and strong hooping on the machine, saving hoop trouble

Versatile Magnetic Frame

100x100 : PRVMFMKIT, PRVMFMKITAP
180x130 : PRVMFLKIT, PRVMFLKITAP

	PR1055X	PR680W	VR100
M:100 x 100	✓	✓	
L:180 x 130	✓	✓	



Easy to remove the magnets without tools



Can hoop the materials on the machine



Can embroider the bottom of tubular items



Large frame is good for flatten materials

Easiest hooping with strong holding power, yet no hoop burn

Clamp Frame M

PRCLPM1/PRCLP100B/PRCLPM1AP/
PRSCLP1/VRCLP100B/VRCLP100BAP

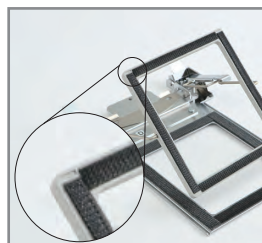
	PR1055X	PR680W	PRS100/VR
100 x 100 mm (4 x 4 in)	✓	✓	✓



Ideal for tote bag, from thin to thick material



Easiest hooping - just click and snap



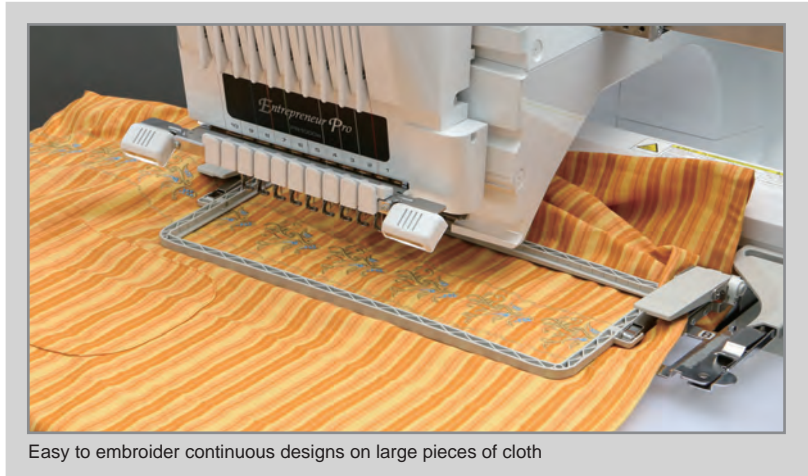
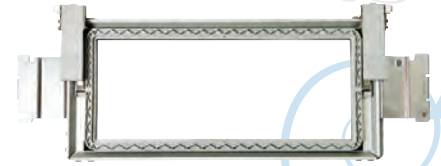
Double-sided frame surface to cover both woven and slippery material

Ideal for embroidering continuous designs such as those on curtains and skirts

Border Frame

PRPBF1/
PRSBH1/VRBF180

	PR1055X	PR680W	PRS100/VR
300 x 100 mm (12 x 4 in)	✓	✓	
180 x 100 mm (7 x 4 in)			✓



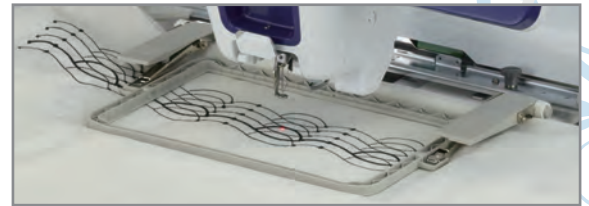
Easy to embroider continuous designs on large pieces of cloth



Remove the frame in one step



Simply slide the cloth and fit the frame



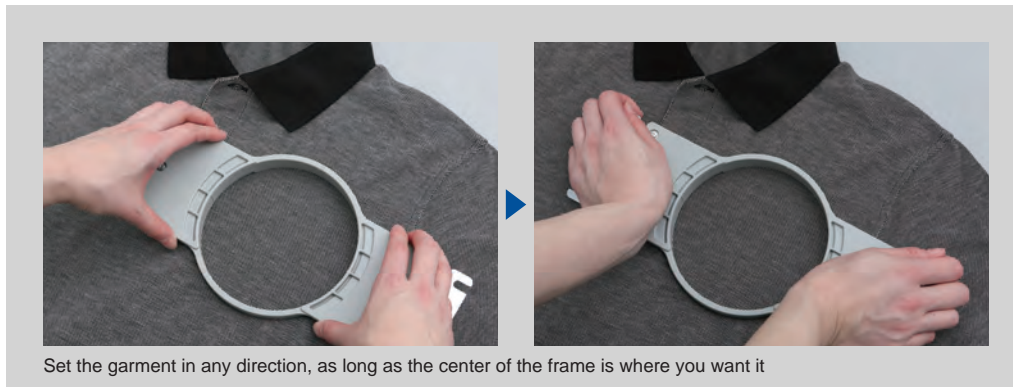
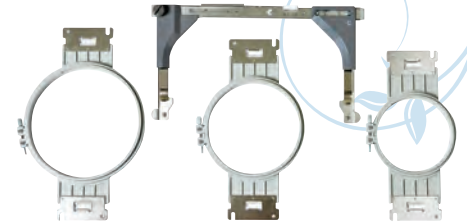
The PRS100/VR offers a 180 mm x 100 mm sewing range

Apply the hoop over a specific area

Round Frame

PRPRFK1/
PRSRHK1/VRRFK1

	PR1055X	PR680W	PRS100/VR
Φ100 mm (4 in) (dia)	✓	✓	✓
Φ130 mm (5 in) (dia)	✓	✓	✓
Φ160 mm (6 in) (dia)	✓	✓	✓



Set the garment in any direction, as long as the center of the frame is where you want it



Easily adjust designs that need to be properly aligned

Square hoop to suit quilt designs

Quilt Frame

PRPQF200

	PR1055X	PR680W	PRS100/VR
200 x 200 mm (8 x 8 in)	✓	✓	



Square frame to make aligning quilt patterns and other embroidery positions easy



The square shape of the frame also makes it ideal for planning quilt designs

Excess cloth on larger pieces no longer gets in the way when doing embroidery

Flat Frame

PRF300/
PRSFLH200/VRFF200

	PR1055X	PR680W	PRS100/VR
300 x 200 mm (12 x 8 in)	✓	✓	
200 x 200 mm (8 x 8 in)			✓



Cloth outside the frame is kept on top of the frame and out of the way



Even large pieces of cloth can be released to the upper side of the arm



The PRS100/VR offers a 200 mm x 200 mm sewing range

Other accessories

	PR1055X	PR680W	PRS100/VR
Jumbo Frame	✓		
Scan Frame	✓		
Magnetic Frame	✓	✓	✓
Cylinder Frame	✓	✓	✓
Bobbin Winder	✓	✓	✓
Wide Table	✓	✓	✓
Embroidery Stand	✓	✓	✓
Free Motion Kit			✓
Clamp Frame	✓	✓	✓
Clamp Frame L/R	✓	✓	

Jumbo Frame

PRPJF360



Scan Frame

PRSCANFKIT1



Magnetic Frame

PRMHA50/PRMFA50/
PRMFA50AP



Embroidery Stand

PRNSTD2/VRPRNSTD



Cylinder Frame

PRCL1



Bobbin Winder

PRBW1



Wide Table

PRWT1/PRSWT1/VRWT1



Free Motion Kit

PRSFMK1/VRFMK1



Clamp Frame

PRCLP45LR/PRCLP45LRD/PRCLP45B/
PRCLP45BAP/PRSCLP45B/VRCLP45B



Main Specifications and Functions

	PR1055X	PR680W	PRS100/VR
Number of needles	10	6	1
Speed adjustment	Individual Needle Speed adjustable from 400 to 1000 spm*(Frames); 400 to 600 spm (Caps/Cylinder/Clamps)		
Maximum sewing area (W x H)	360 x 360 mm (Wide cap frame: 360 x 60 mm) 14 x 14 in (Wide cap frame: 14 x 2.4 in)	300 x 200 mm (Cap frame: 130 x 60 mm) 12 x 8 in (Cap frame: 5 x 2.4 in)	200 x 200 mm (Cap frame: 130 x 60 mm) 8 x 8 in (Cap frame: 5 x 2.4 in)
Maximum sewing area of included frame (W x H)	360 x 200 mm 14 x 8 in	300 x 200 mm 12 x 8 in	200 x 200 mm 8 x 8 in
LCD	WVGA 1280 x 800 IPS 16,777,216 colors	WVGA 1280 x 800 IPS 16,777,216 colors	WVGA 800 x 480 TFT 260,000 colors
Input	2 USB ports (2.0)/1 PC connection (2.0)	2 USB ports (2.0)/1 PC connection (2.0)	1 USB ports/1 PC connection
Built in fonts	37	50	20
Built in design	170	180 (One Point 100+BH,UtilityStitch 80)	405
Automatic needle threading	Yes	Yes	Yes
Needle position confirming	Camera/Live Camera	Cross-hair laser	LED pointer
Manual color sequence	Yes	Yes	No
Sewing speed setting	Yes	Yes	No
Single color sewing	Yes	Yes	Yes
Color sort	Yes	Yes	Yes
Built-in tutorial videos	29	24	No
WLAN function	Yes	Yes	No

* spm: stitches per minute

PR Series Arm/Frame Compatibility

		Models	PR1055X						PR680w						PRS100/VR				
		Arm	A	B	C	D	E	F	A	B	C	D	E	F	a	b	c	d	e
Frame	Sewing area(mm)	Label sign	A	B	C	D	E	F	A	B	C	D	E	F	a	b	c	d	e
Tubular	60 x 40	(No label)	✓						✓						✓				
	100 x 100	(No label)	✓						✓						✓				
	180 x 130	(No label)	✓						✓						✓				
	300 x 200	(No label)	✓						✓										
	360 x 200	(No label)	✓																
Flat	300 x 200	(No label)	✓						✓										
Quilt	200 x 200	B		✓						✓									
Border	300 x 100	B		✓						✓									
Jumbo	360 x 360	B		✓															
Sleeve	70 x 200	B		✓						✓									
Round	Φ100	C			✓						✓						✓		
	Φ130	C			✓						✓						✓		
	Φ160	C			✓						✓						✓		
Clamp	45 x 24	D				✓						✓							✓
	L: 45 x 24	D				✓						✓							
	R: 45 x 24	D				✓						✓							
	M: 100 x 100	D				✓						✓							✓
Versatile Magnetic Frame	M: 100 x 100	F					✓						✓						
	L: 180 x 130	F					✓						✓						
Tubular	200 x 200	a												✓					
Flat	200 x 200	a												✓					
Border	180 x 100	b													✓				
S	38 x 44	e				✓						✓							✓
	41 x 70	e				✓						✓							✓
	33 x 75	e				✓						✓							✓
	50 x 50	e				✓						✓							✓
Magnetic	50 x 50	e				✓						✓							✓