

Instruction Manual and Parts List

Zigzag Sewing Machine

20U 105 / 105C
125 / 125C



SINGER®

Contents

1	Safety Instructions	1
1.1	Important Safety Instructions	1
1.2	For Safe Operation	2
2	Product Description and Machine Specification	3
2.1	Product Description	3
2.2	Machine Specification	4
2.3	Motor, Motor Pulley and V-Belt Specifications	4
2.4	Relationship between Zigzag Bight and Maximum Speed	4
3	Setup and Adjustment Instructions	5
3.1	Table Cut-Out Drawing	5
3.2	Oil Reservoir Installation	6
3.3	Belt Cover Installation	7
3.4	Lubrication	8
3.5	Needle and Thread	9
3.6	Inserting the Needle	9
3.7	Bobbin Case Attachment	10
3.8	Bobbin Thread Winding	11
3.9	Bobbin Case Threading and Replacement	12
3.10	Machine Threading	14
3.11	Stitch Length Adjustment	15
3.12	Presser Foot Pressure Adjustment	15
3.13	Needle Thread Tension Adjustment	16
3.14	Thread Take-up Spring Adjustment	16
3.15	Bobbin Thread Tension Adjustment	17
3.16	Needle Position Selector	17
3.17	Stitch Width Regulator	18
3.18	Zigzag Stitch Width Control	18
3.19	Needle Bar Frame Clamp Device	19
3.20	Straight and Zigzag Stitch Fitting	20
3.21	Spool Cap Usage	21
3.22	Thread Anti-Spill Net Usage	22
3.23	Knee Lifter Installation	22
3.24	Fittings for Buttonhole Stitching	25
3.25	Fittings for Hem Sewing	25
3.26	Fittings for Zipper and Cord Sewing	26

Contents

4 Maintenance	27
4.1 Machine Head Cleaning	27
4.2 Lubrication	27
4.3 Safety Inspection	27
5 Troubleshooting	28
6 Parts List	29
6.1 Face Plate, Arm Top Cover and Arm Side Cover Components	30
6.2 Thread Take-up, Arm Shaft and Handwheel Components	32
6.3 Needle Bar, Presser Bar and Needle Plate Components	34
6.4 Zigzag Triangular Cam and Hook Advancing Crank Components	36
6.5 Bight Amplitude and Bight L-C-R Position Components	38
6.6 Arm Shaft (upright) and Rotating Hook Drive Shaft Components	40
6.7 Hook and Bobbin Case Components	42
6.8 Feed Regulating Dial and Feed Reverse Lever Components	44
6.9 Feed Mechanism Components	46
6.10 Presser Bar Lifter and Thread Tension Components	48
6.11 Thread Stand Components	50
6.12 Accessories and Attachments	52
6.13 Belt Cover Components	54

1.1

Important Safety Instructions

Important

When using the machine, basic safety procedures must be followed. Read with attention all instructions before using the machine.

When using it, understand that all basic safety instructions are not limited to the following items. Read all instructions, take care of this manual, and use it as reference when necessary.

- Before running the machine, make sure all relevant safety specifications are adequate to specifications and technical standards in your country.
 - The machine should not be run without its safety devices.
 - The machine should only be operated by properly trained personnel.
 - For your safety, goggles must be used while running the machine.
 - Turn off or unplug the machine when the following situations arise:
 - Passing the thread by the needle or replacing the bobbin or looper.
 - Replacing the needle, presser foot, throat plate, feed dog and sliding plate.
 - When the machine is in maintenance.
 - When the operator is not running the machine.
 - In case of lubricant oil contact with the eyes or skin, washed the surface with plenty of icy water with a generous amount of cold water. In case of ingestion, seek medical help immediately.
 - Repair, fitting or maintenance should only be performed by properly trained personnel.
 - Maintenance and repair on electric equipment should only be made by qualified personnel. If any electric device is damaged, the machine should be immediately stopped.
 - Before starting the machine in full running, a test must be conducted to assure that machine and operator are able to perform the task.
 - The machine should not be placed next to a sound source as an ultrasonic welding machine and other equipment.
 - The machine should only be run with the proper electric cable and connectors, and also the adequate grounding.
 - The machine should only be used to sew materials as indicated in its instructions manual, and indications of use should be followed.
- Singer will not be held responsible for any damage caused by unauthorized changes in the product.

1.2

For Safe Operation

- ⚠ • *To avoid the risk of electric shock, do not open the motor wiring box and do not touch the components assembled inside the wiring box.*
- *To avoid injuries do not run the machine without the belt cover or in case any other safety device is removed.*
- *To avoid possible injuries keep fingers, head and clothes far from wheel, belt and motor when the machine is running. Nothing should be placed near those parts.*
- *To avoid injuries never put your fingers next to the rotating hook and the thread take-up lever cover when the machine is running.*
- *To avoid possible injuries be careful when putting down or lifting the machine head.*
- *To avoid accident in case of a sudden start of the machine always turn it off when laying it down, or remove the belt cover and the belt.*
- *If you machine is equipped with a servomotor, it does not make noises while being driven. To avoid a possible accident caused by an unexpected start, be sure the machine is turned off.*
- *To avoid electrical shock, do not run the machine without proper grounding.*
- ⚠ • *To minimize the risk of accidents or damage in electric components caused by electric discharge turn the machine off before unplugging it.*
- *Clean the machine periodically.*

2

Product Description and Machine Specification

2.1 Product Description

Zigzag Sewing Machine 20U series



2.2 Machine Specification

Table 1 – Machine Specification

	Singer model	
	20U-105 / 105C	20U-125 / 125C
For sewing	Light to medium	
Stitch type	Plain zigzag (Straight stitch)	
Max. speed[1]	2,500 rpm	2,000 rpm
Max. stitch bight	9.0 mm	12.0 mm
Max. stitch length	3.0 mm	
Needle bar stroke	34.8 mm	
Presser bar lift (manual)	6.35 mm	
Presser bar lift (knee lifter)	9.0 mm	
Needle catalog (needle system)	Cat. 1910-05 (135x9)	
Oil	Singer Oil	

Maximum speed will vary depending on fabric, threads and sewing condition

2.3 Motor, Motor Pulley and V-Belt Specifications

1/3 HP (250W) 4-pole (low speed) clutch motor
M type v-belt

Table 2 – Machine Speed vs. Motor Pulley Diameter

Machine Speed [spm]		Motor Pulley Diameter [mm]	
20U-105 /105C	20U-125/ 125C	50 Hz	60 Hz
2,500	-	130	105
2,000	2,000	105	85
1,800	1,800	90	75
1,500	1,500	80	65

2.4 Relationship between Zigzag Bight and Maximum Speed

Table 3 - Relationship between Zigzag Bight and Maximum Speed.

Machine Class	20U-105 / 105C		20U-125 / 125C	
	Zigzag bight	Max. speed	Zigzag bight	Max. speed
	0 ~ 5.0 mm	2,500 rpm	0 ~ 5.0 mm	2,000 rpm
	5.0 ~ 9.0 mm	2,000 rpm	5.0 ~ 12.0 mm	1,800 rpm

3

Setup and Adjustment Instructions

3.1 Table Cut-Out Drawing

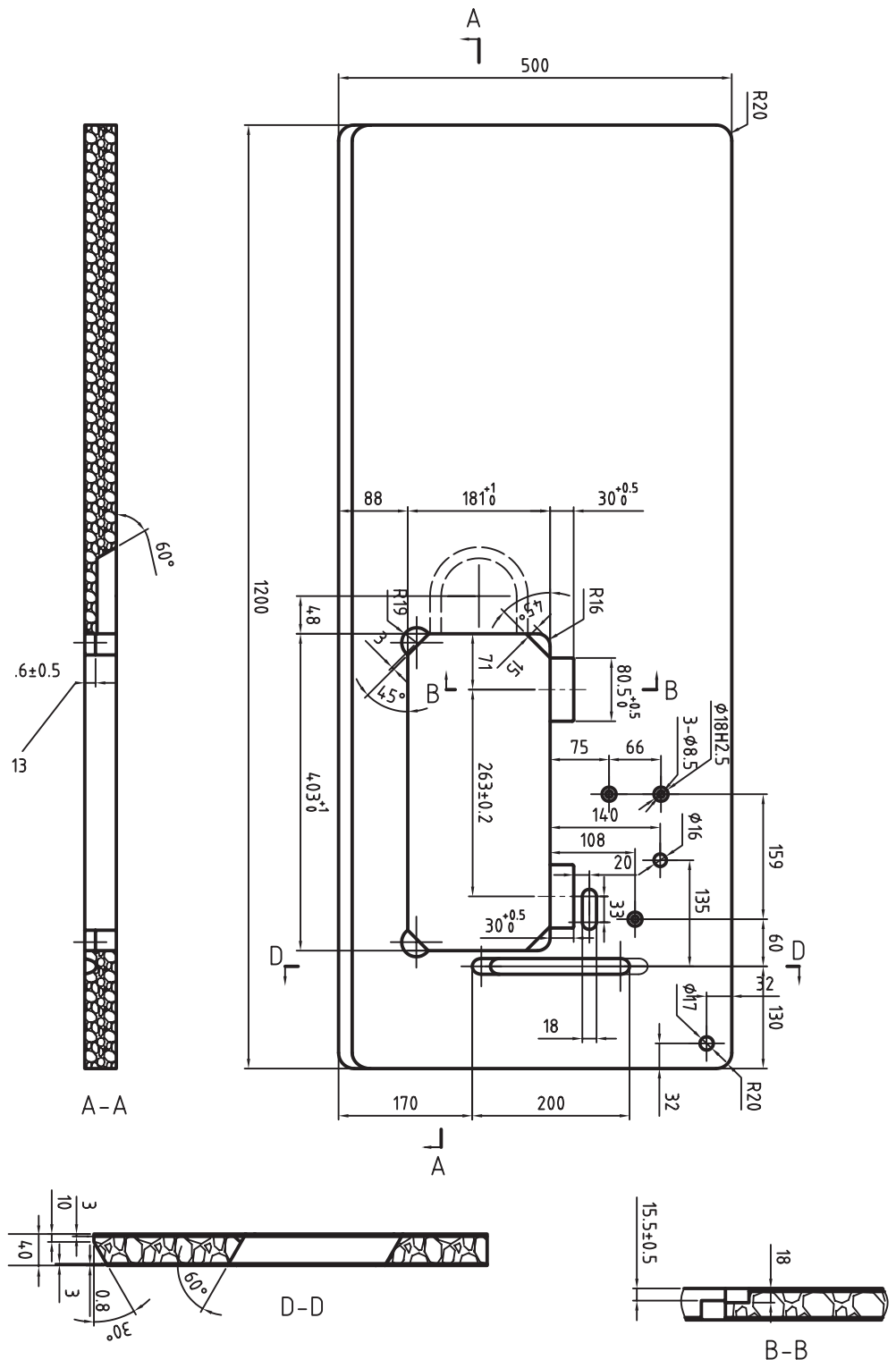


Figure 1

3.2

Oil Reservoir Installation

The oil reservoir should be fixed on the side of the machine table groove by using four nails (Figure 2).

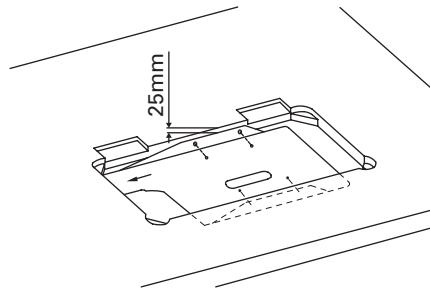


Figure 2

Two rubber seats and two rubber corners for supporting the head portion should be fixed on the extended portion of the table by using nails, and the other two rubber cushion on the hinge side should be fixed on grooves by using nails too (Figure 3).

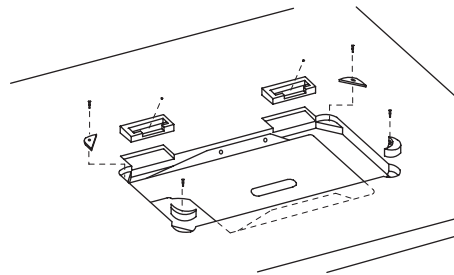


Figure 3

Two hinges '1' fit into the hole in the machine bed, and the machine head fitted the table hinge's rubber '2', before the machine head is placed to the cushions on the four corners of the table (Figures 3 and 4).

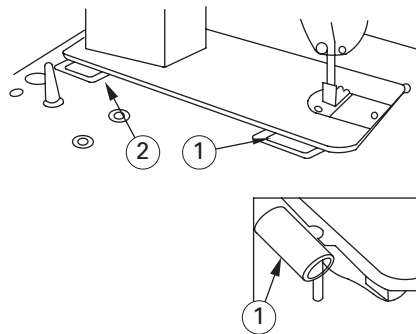


Figure 4

3.3

Belt Cover Installation

Caution

Switch off the machine.
Set sewing head upright again using both hands.
Danger of crushing between sewing head and table top.
For your safety, do not run the machine without the belt cover.

The machine belt cover

Install the machine belt cover so that the hand wheel and v-belt move freely without interference, and then tighten the screw at this position (see Figure 5).

The motor belt cover

Install the motor belt cover so that motor pulley and v-belt will rotate freely without interference.

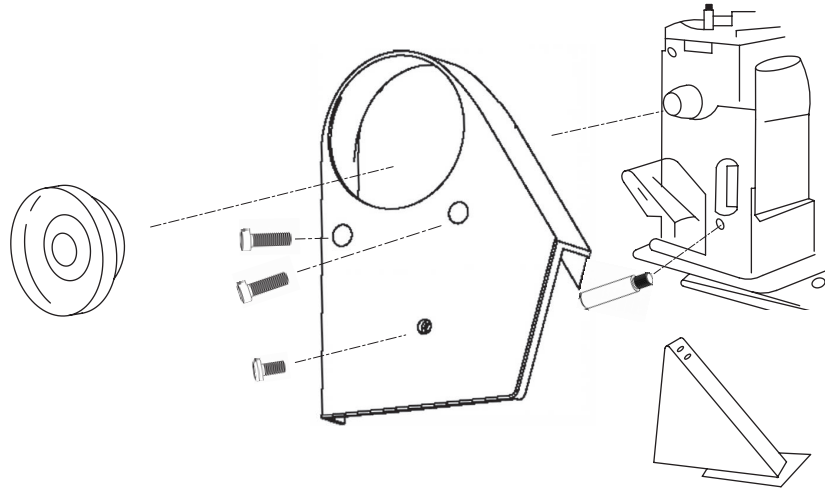


Figure 5

3.4

Lubrication

Caution

Switch off the machine.
Set sewing head upright again using both hands.
Danger of crushing between sewing head and table top.
For your safety, do not run the machine without the belt cover.

Important

When you first operate your machine after set up or after an extended period of disuse, oil the machine and run your machine at 1,000 to 1,500 spm for about 10 minutes for the purpose of break-in.

The rotating hook, and the area at the under of the needle plate.

Turn handwheel over toward you until oil hole in the rotating hook appear in sight.

Regularly apply one or two drops of oil to the oil hole at the rotating hook (Oiling point at the Figure 6).

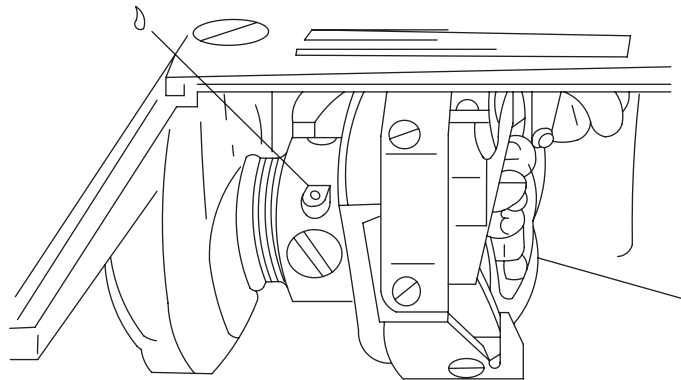


Figure 6

Remove the face plate and the top cover.

Apply sufficient oil to all oil felt and indicate with oiling points shown in Figure 7

Apply a small amount of grease to gear teeth indicated at the 'B'.

Keep the oil saturated with the oil reservoir felt 'A' at the under of the top cover.

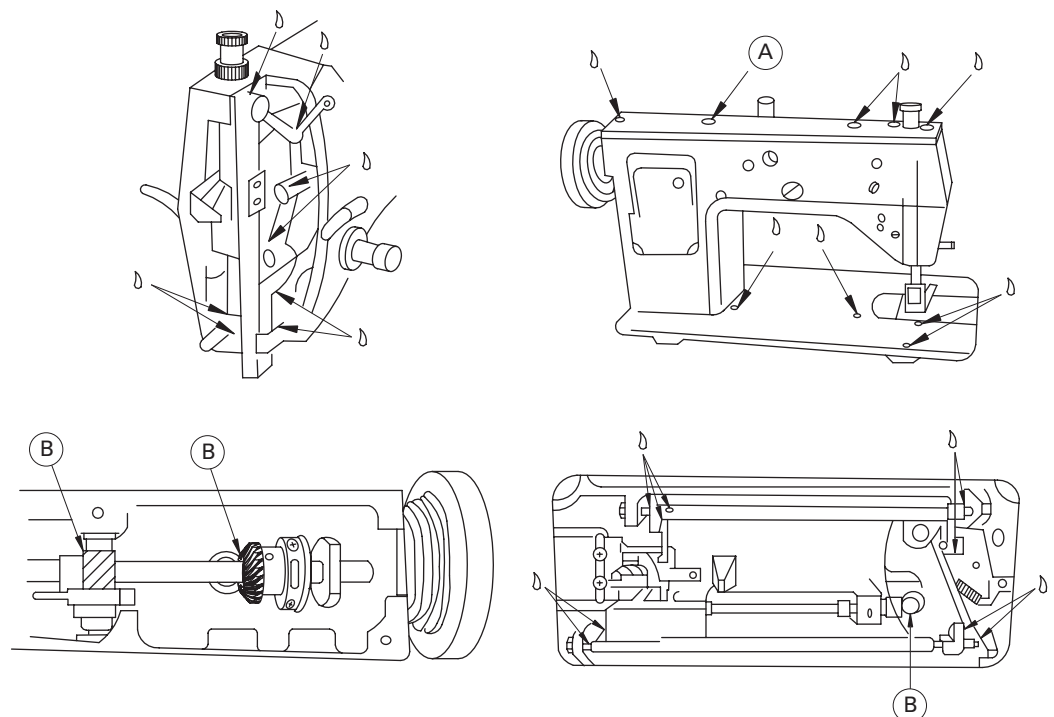


Figure 7

3.5

Needle and Thread

Caution

The power supply should be cut off before attaching the needle.

Selection of the proper needle depends not only on the machine model, but also on the material and thread used. For selection of proper

needle and thread sizes to be used on the various machine models please refer to the table below.

Table 4 - Needle and Thread

Model	20U-105 / 105C / 125 / 125C		
Application	Light weight materials	Medium weight materials	Mid-heavy weight materials
Max. thread size (Nm)-Synthetic*	120	60	30
Needle size (1/100mm)	10 (60)	12 ~ 16 (80 ~ 100)	18 ~ 19 (110 ~ 120)
Needle catalog (Needle system)	1910-05 (135x9)		

* or an equivalent size of other types of thread

3.6

Inserting the Needle

Caution

Switch off the machine. Do not operate the machine without the finger guard '2' (see Figure 8)

Use needle Cat. No. 1910-05 needle system (135x9) only.

Raise needle bar to its highest position by turning handwheel toward you.

Loosen needle set screw '1' (see

Figure 8). Insert the needle in the needle bar and push it up as far as it will go.

Make sure its long groove faces toward the front. Tighten needle set screw '1' securely.

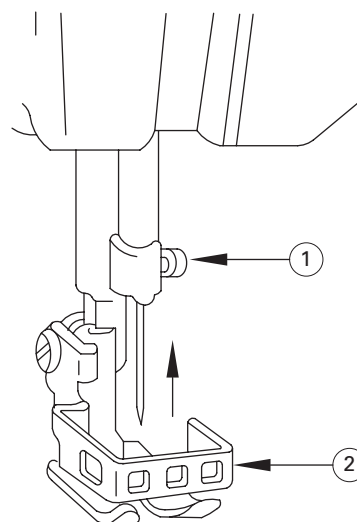


Figure 8

3.7

Bobbin Case Attachment

Caution

Switch off the machine.

Do not operate the machine with throat plate left open.

Follow as shown in Figure 9

1. Open bed slide.
2. Raise latch '1'.
3. Lift out bobbin case '2'.

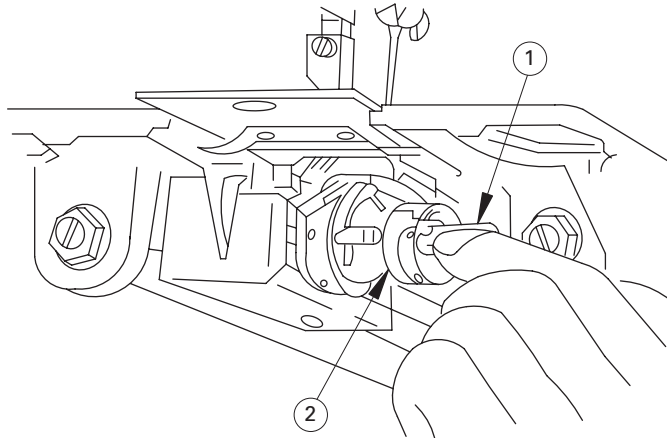


Figure 9

3.8

Bobbin Thread Winding

Caution

Do not guide or hold thread when winding the bobbin.

Place bobbin on bobbin winder spindle '3' and pushing it on as far as it will go.

'1' adjustment.

'+' direction: Increase tension

'-' direction: Decrease tension

Push latch '2' in the direction indicated by arrow 'A', then start the machine.

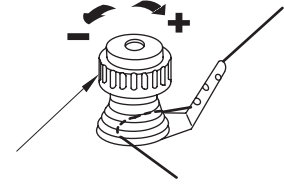
Bobbin winder spindle '3' is rotate in the direction indicated by arrow 'B'.

To adjust the amount of thread on bobbin, loosen screw '4' on latch '2' and swing the latch '2' away from you or toward you, as required.

For more thread on bobbin, swing latch '2' away from you.

For less thread on bobbin, swing latch '2' toward you.

If thread winds unevenly on bobbin, loosen screw '5' and move pre-tension '1' up or down, as required, and tighten screw '5'.



Threading the pre-tension for bobbin winding

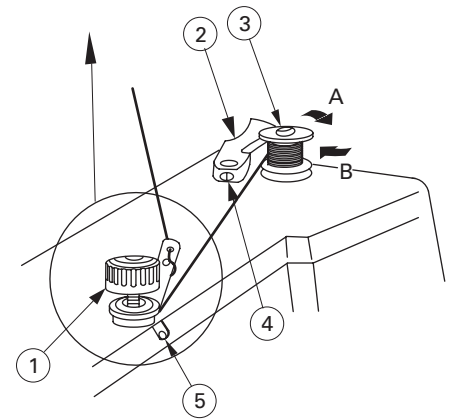


Figure 10

3.9

Bobbin Case Threading and Replacement

Note

When straight stitching, a better result can be obtained if bobbin thread is not threaded through bobbin case thread guide '3' of Figure 15.

Hold bobbin case so that bobbin rotates in the direction of the arrow, and put bobbin in the bobbin case. (Figure 12)

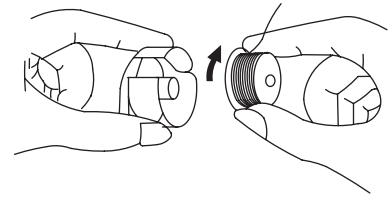


Figure 11

Put thread into notch '1', and pull it under tension spring '2' (Figure 13)



Figure 12

Pull thread out from slot '2' on end of spring '1', and pass it through bobbin case thread guide '3'.

Leave thread approximately 4 inches longer from in the bobbin case. (Figure 14 and 15)

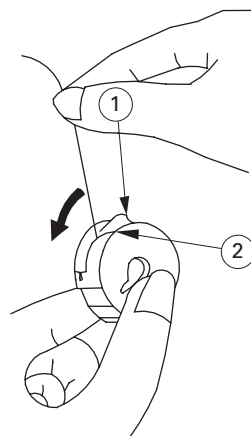


Figure 13

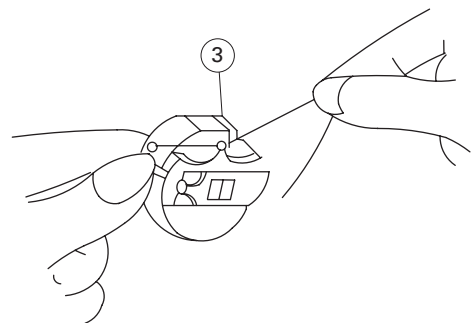


Figure 14

Caution

Switch off the machine.

Do not run machine without closing bed side. Danger of injury!

Hold bobbin case by latch '1' and place it on spindle of bobbin case holder '2' so that position finger '3' enters notch '4' at right of bobbin case holder (see Figure 12).

Release latch and press bobbin case firmly in place to assure proper position. Close bed slide.

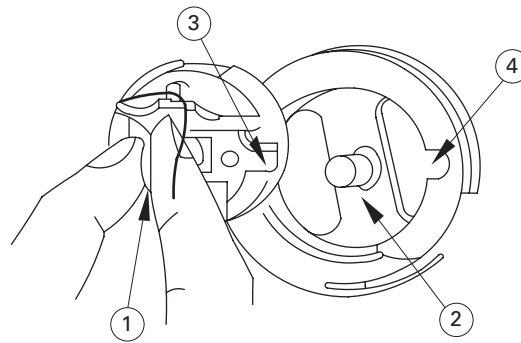


Figure 15

3.10

Machine Threading

Caution

Switch off the machine.

Do not operate the machine without thread take-up guard.

Do not operate the machine without finger guard.

When threading the machine head, the needle bar should be at the highest point of its stroke.

Threading the machine in the order shown in the Figure 19.

Leave thread approximately 4 cm longer in the needle.

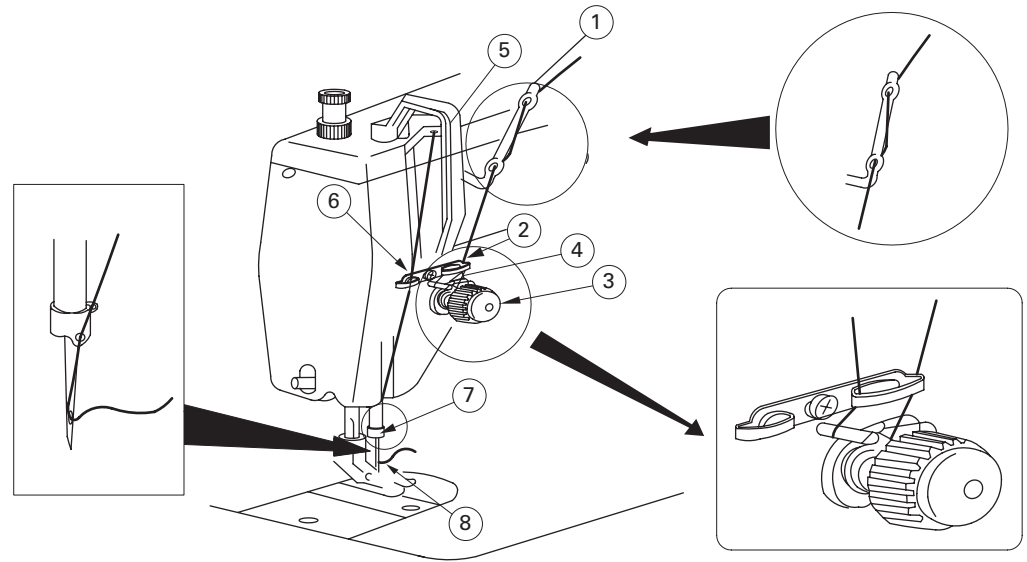


Figure 16

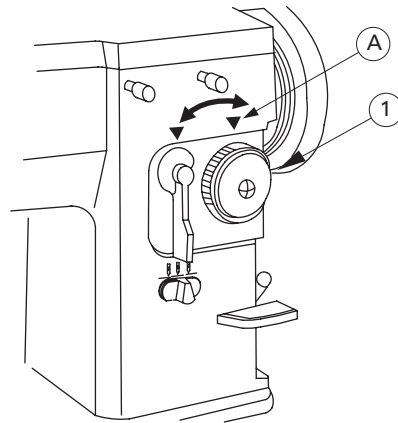
3.11

Stitch Length Adjustment

Adjusting the stitch length:

Turn stitch length dial '1' in the direction of the arrow, and align the desired number to marker dot 'A' on the machine (Figure 20).

The indication of the stitch length dial '1' is in millimeters.



Adjusting the reverse stitch length:

Push feed reverse lever '2' down for reverse feed, and release it for forward feed.

To adjust the reverse stitch length turn thumb screw '3' in direction of the marker '+' or '-' as requested for the stitch length.

'+' direction: To lengthen

'-' direction: To shorten

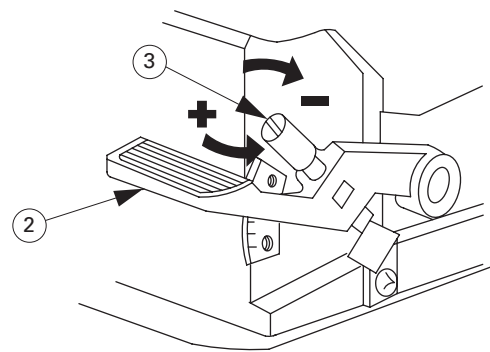


Figure 17

3.12

Presser Foot Pressure Adjustment

Loosen the nut '2' and turn the presser spring regulator '1' clockwise (in direction of the marker '+'), the pressure of the presser foot will be increased.

Turn the regulator '1' counter clockwise (in direction of the marker '-'), the pressure of the presser foot will be decreased.

Tighten the nut '2'.

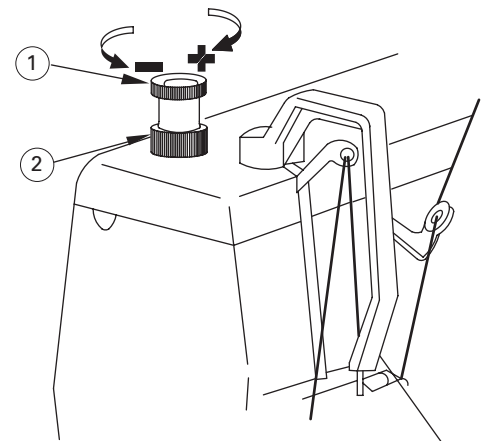


Figure 18

3.13

Needle Thread Tension Adjustment

Adjusting the tension of needle thread using tension adjusting nut '1' according to different sewing condition. (Figure 20)

Turn the nut '1' clockwise (in direc-

tion of the marker '+'), the tension will increase.

Turn the nut '1' counterclockwise (in direction of the marker '-'), the tension will decrease.

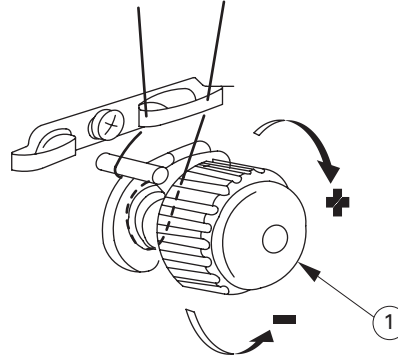


Figure 19

3.14

Thread Take-up Spring Adjustment

The adjusting of the pressure of the thread take-up spring '4' (Figure 21).

Turn the thread tension post '1' clockwise (in direction of the marker '+'), the pressure will be increased.

Turn the thread tension post '1' counterclockwise (in direction of the marker '-'), the pressure will be decreased.

The adjusting of the stroke of the thread take-up spring '4'. (Figure 21)

Loosen setting screw '2'.

Turn the thread tension '3' clockwise (in direction of the marker '+'), the stroke of the thread take-up spring will be increased.

Turn the thread tension '3' counterclockwise (in direction of the marker '-'), the stroke of the thread take-up spring will be decreased.

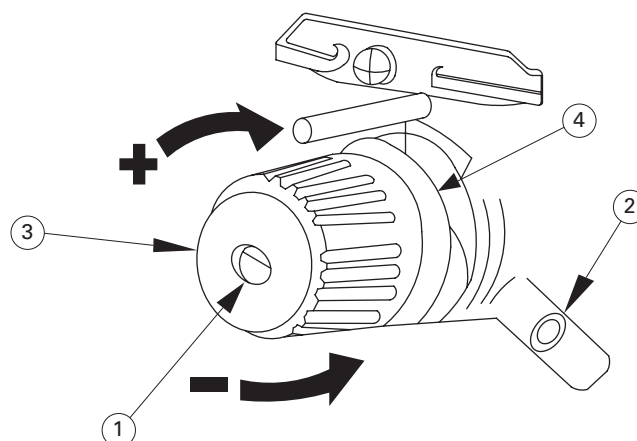


Figure 20

3.15

Bobbin Thread Tension Adjustment

Turn the tension adjusting screw '1' clockwise (in direction of the marker '+'), the bobbin thread tension will increase.

Turn the tension adjusting screw '1' counterclockwise (in direction of the marker '-'), the bobbin thread tension will decrease.

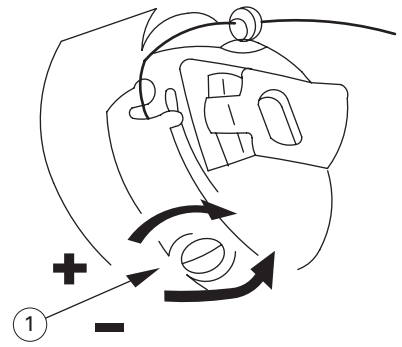


Figure 21

3.16

Needle Position Selector

Caution

Do not make any needle position adjustment while the needle is in the fabric.

Switch off the machine.

Left, Center and Right needle position settings are available for placement of both straight and zigzag stitching (see Figure 25).

To position, push lever in and move to desired setting.

Center setting:

Normal sewing.

Left/Right setting:

Only used when special placement of stitching is desired.

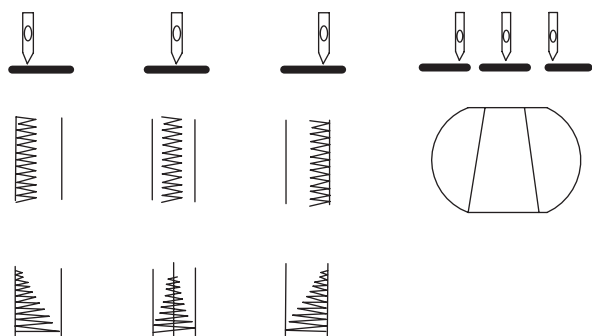
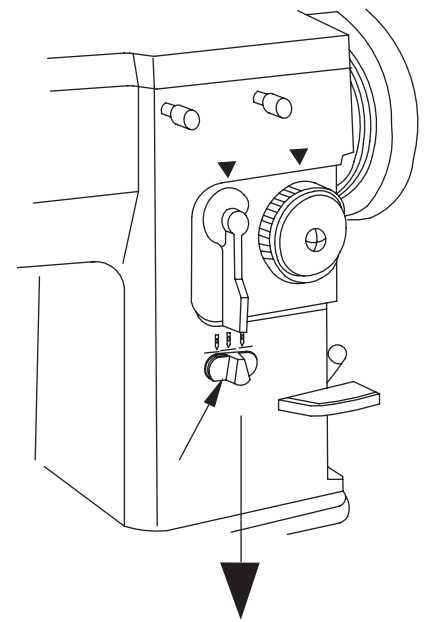


Figure 22

3.17

Stitch Width Regulator

Caution

Do not make any needle position adjustment while the needle is in the fabric.

Switch off the machine.

The width of zigzag stitches is controlled with the spring biased stitch width regulating lever '1' (Figure 24).

Maximum zigzag width:

20U-105 / 105C : 9.0 mm

20U-125 / 125C: 12.0 mm

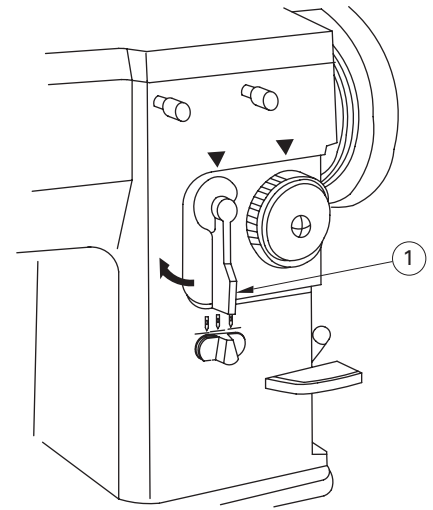


Figure 23

3.18

Zigzag Stitch Width Control

The two thumb screws '1' and '2' provided on front of the arm allow you to control the width of zigzag stitches.

Thumb screw '1':

Using to control the wide zigzag.

Thumb screw '2':

Using to control the narrow zigzag.

To obtain minimum to maximum zigzag width (20U-105, 105C: 9mm or 20U-125, 125C: 12mm), as the following of Figure 27, first loosen thumb screw '2' to permit the stitch width regulator lever '3' to return to its zero position at the 'A', and retighten thumb screw.

Then loosen thumb screw '1', turn the stitch width regulator lever '3' to clockwise as far as it will go and while holding the regulator lever in this position at the 'B', retighten thumb screw '1'.

It can adjust the regulator of the stitch width in the range from zero to the maximum now.

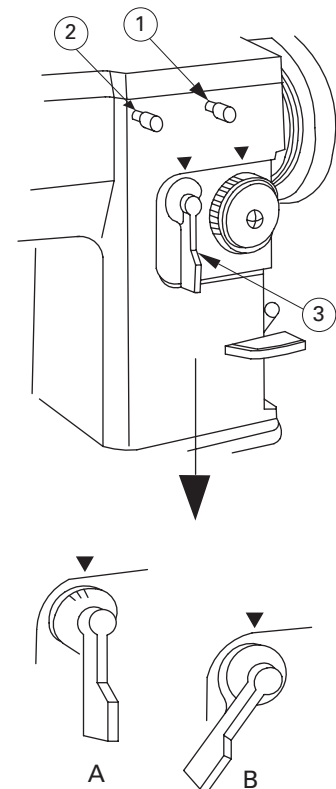


Figure 24

3.19

Needle Bar Frame Clamp Device

Caution

Switch off the machine.

When straight stitching, a better sewing result can be obtained by locking the needle bar frame immovable with the clamping device.

To clamp the needle bar frame, turn knob '1' clockwise as far as it will go (Figure 26 A)

When zigzag stitching, be sure the clamp is released.

To release the clamp, turn the knob '1' counterclockwise as far as it will go (Figure 26 B)

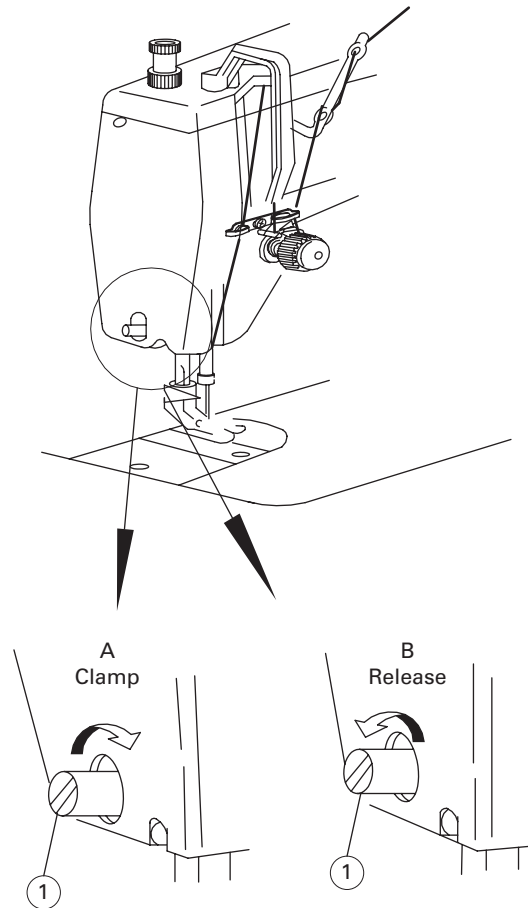


Figure 25

3.20

Straight and Zigzag Stitch Fitting

Caution

Switch off the machine.

Zigzag stitch Presser Foot '1', Needle Plate '2' and Feed Dog '3' are used for straight and zigzag stitching. (Figure 27)

Straight Stitch Presser Foot '1', Needle Plate '2' and Feed Dog '3' are used for straight stitching only. (Figure 28)

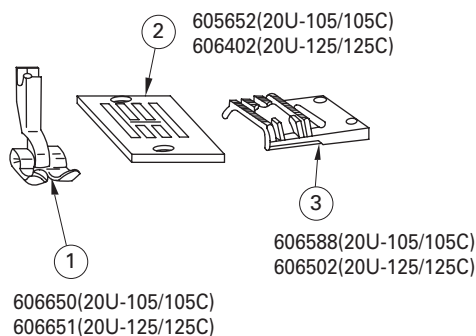


Figure 26

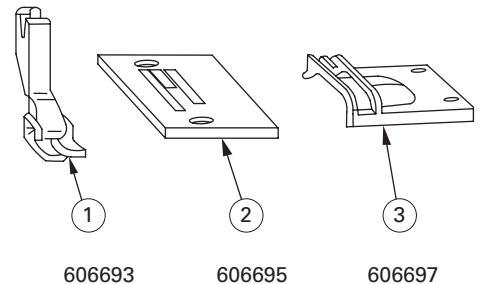


Figure 27

Changing the needle plate and feed dog (Figure 29)

Open bed slide, then remove needle plate, (Use screwdriver '3' furnished with machine for removal and replacement of needle plate and feed dog.)

Using a screwdriver '2' remove bed plate '1' and remove feed dog '4'.

To replace general purpose or straight stitch feed dog, fasten feed dog to machine temporarily and replace general purpose or straight stitch needle plate. Set feed dog correctly in position so that it will not hit the edges of feed dog slots in the needle plate.

Replace bed plate and press it firmly in place.

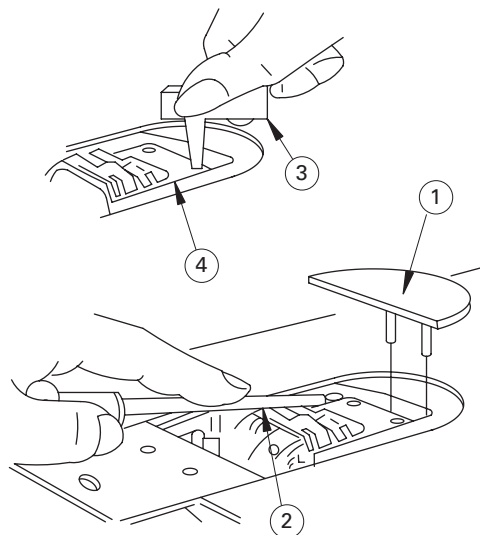


Figure 28

3.21

Spool Cap Usage

When using a reel type thread spool '2', fit the spool cap '1' onto the thread spool hole '3', which is supplied by the machine accessory.

Set the height of thread spool holder '4' so there is approximately 2.0 mm clearance between top end

of spool pin '5', and the tip of the slotted spigot of the spool cap '1'.

The spool cap '1' should never be fitted on the spool pin '5'. Forcing it onto the spool pin may result in breaking the slotted spigot of the spool cap.

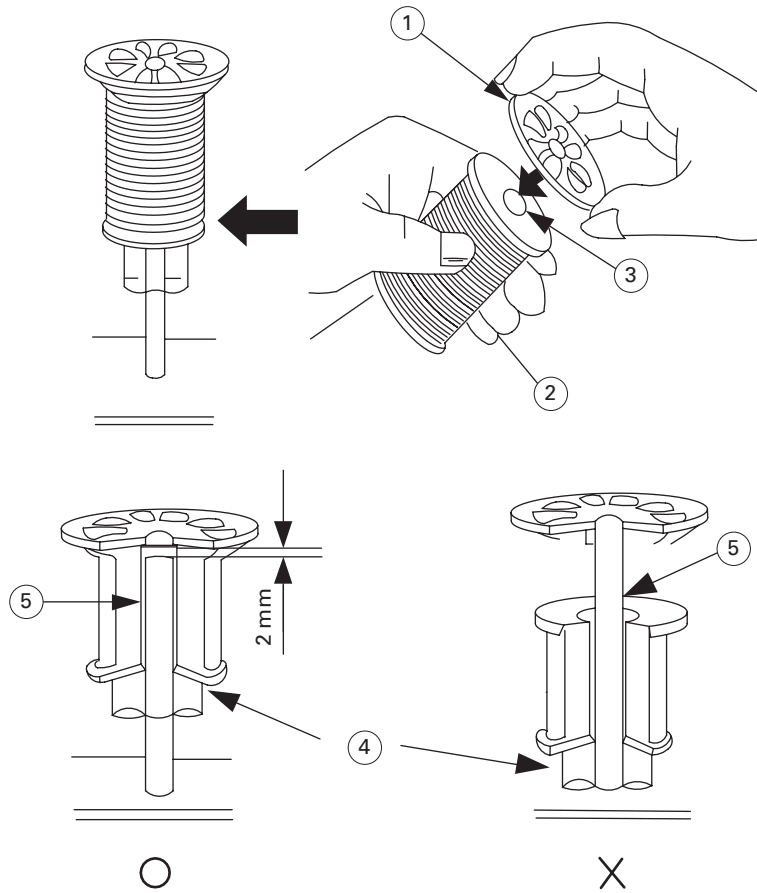


Figure 29

3.22

Thread Anti-Spill Net Usage

When using synthetic threads that easily spill off the cone '1', slip the thread anti-spill net '2' furnished with the machine over the thread

from the bottom of cone '1' leaving the thread end to hang free at the top of thread anti-spill net '2'. (Figure 31)

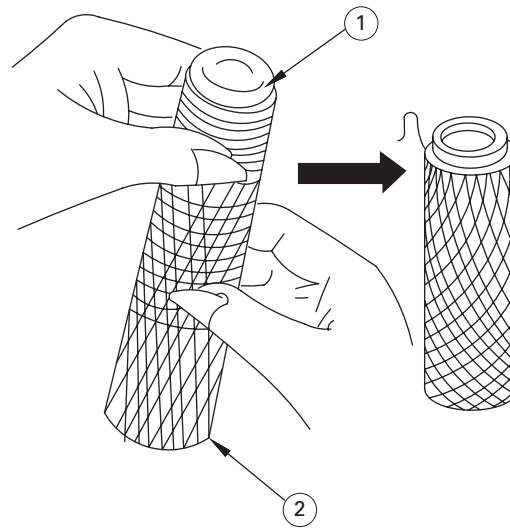


Figure 30

3.23

Knee Lifter Installation

Knee lifter mounting (Figure 32)

The knee lifter bracket '1' position is 145 mm from the edge at the underneath table cutout.

Then fasten the knee lifter bracket under the table '2'.

Caution

Switch off the machine.

Set sewing head upright again using both hands.

Danger of crushing between sewing head and table top.

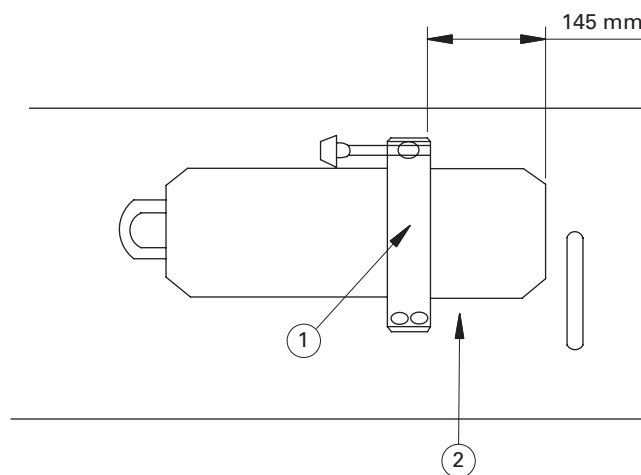


Figure 31

Caution

Switch off the machine.

Set sewing head upright again using both hands.

Danger of crushing between sewing head and table top.

Knee operating presser foot lift (Figure 33)

Bell cranks '1' is fastened to the underside of the bed, the bell crank '1' is used for lifting and lowering the presser foot by the knee.

To raise or lower the presser foot by the knee, loosen screw '4' holding the knee lifter shaft arm '3', and move the knee lifter shaft arm '3' just under the bell crank '1' and firmly tighten screw '4'.

Loosen the lock nut holding screw '7' and turn screw '7' as required, so that the bent end '6' of knee lifter shaft arm '3' will be almost horizontal when knee lifter knee plate '5' is pushed as far as it will go in the direction indicated with arrow 'A', then firmly tighten the lock nut.

With knee lifter shaft arm '3' set in position as described above, loosen screw '8' and move knee lifter shaft arm '3' up or down as required, so that height '10' from its bent end '6' to bracket '9' is 64 mm.

Raise presser foot '12' by presser foot lifter '11'. Then loosen the lock nut holding screw '14' and turn screw '14' as required when the knee lifter knee plate '5' pushed in the direction indicated with arrow 'B', will stop at a point (presser foot '12' raised approx. 9 mm from needle plate '13' surface) where presser bar lifter '11' will drop down from its raised position when presser bar is lifted a little higher than its normal up position. Then firmly tighten the lock nut.

When knee lifter knee plate '5' is pushed in the direction indicated with arrow 'B', the presser foot '12' will rise and when knee plate '5' is released, presser foot '12' will be lowered.

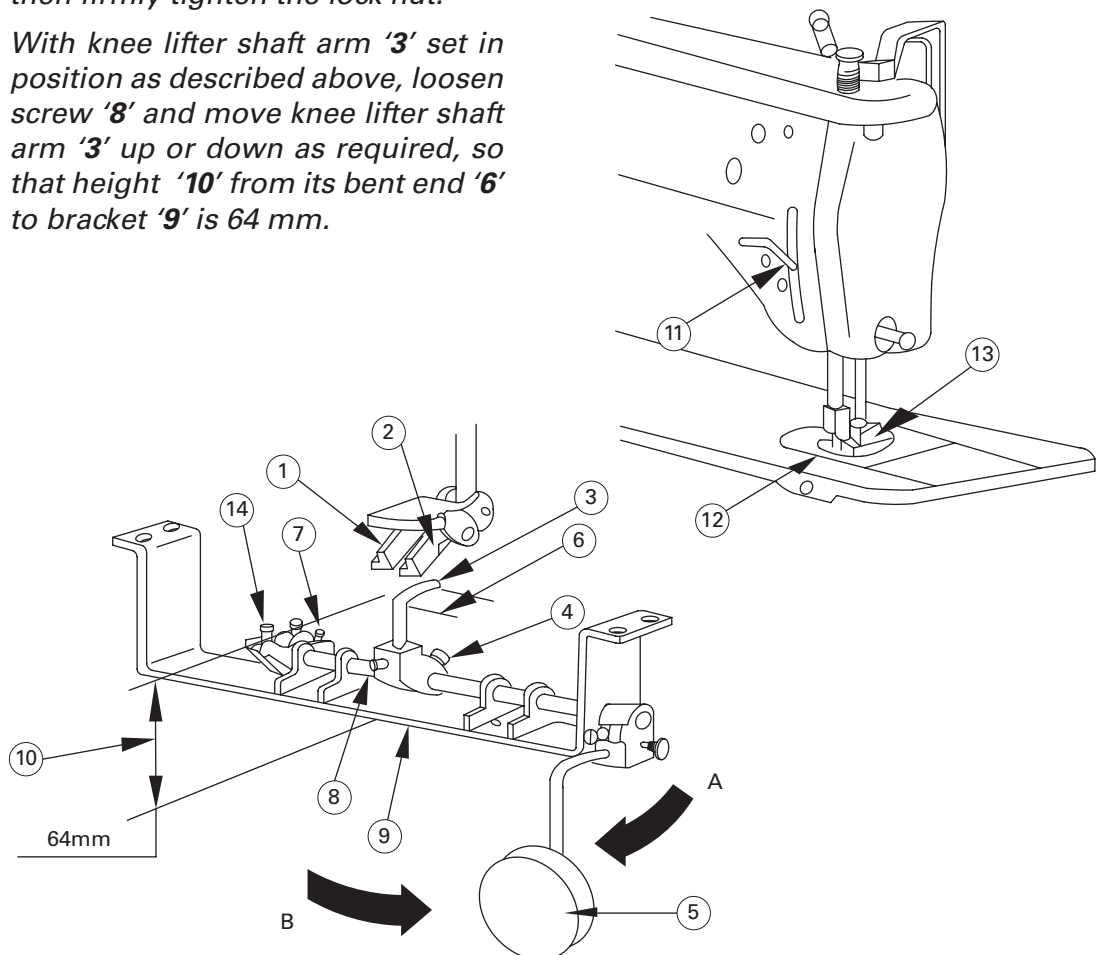


Figure 32

Caution

Switch off the machine.

Set sewing head upright again using both hands.

Danger of crushing between sewing head and table top.

Knee operating stitch width control (Figure 34)

Bell cranks '2' is fastened to the underside of the bed, the bell crank '2' is used for controlling the stitch width with the knee.

To control the stitch width with the knee, loosen screw '4' holding the knee lifter shaft arm '3', and move the knee lifter shaft arm just under the bell crank '2' and firmly tighten screw '4'.

Loosen the lock nut holding screw '7' and turn screw '7' as required, so that the bent end '6' of knee lifter shaft arm '3' will be almost horizontal when knee lifter knee plate '5' is pushed as far as it will go in the direction indicated with arrow 'A'. Then firmly tighten the lock nut.

With knee lifter shaft arm '3' set in position as described above, loosen screw '8' and move knee lifter shaft

arm '3' up or down as required, so that height '10' from its bent end '6' to bracket '9' is 67 mm.

Loosen stitch width regulating plate thumb screws '11' and '12' so that stitch width regulator '13' can be moved from zero to maximum stitch width. (20U-105 / 105C: 9mm or 20U-125 / 125C: 12mm). Loosen the lock nut holding screw '14' and turn screw '14' as required, so that knee lifter knee plate '5' when pushed in the direction indicated with arrow 'B', will stop at the maximum stitch width position of stitch width regulator '13'. Then firmly tighten the lock nut.

Stitch width will become wider when knee lifter knee plate '5' is pushed in the direction indicated with arrow 'B' and will become smaller when knee plate is released.

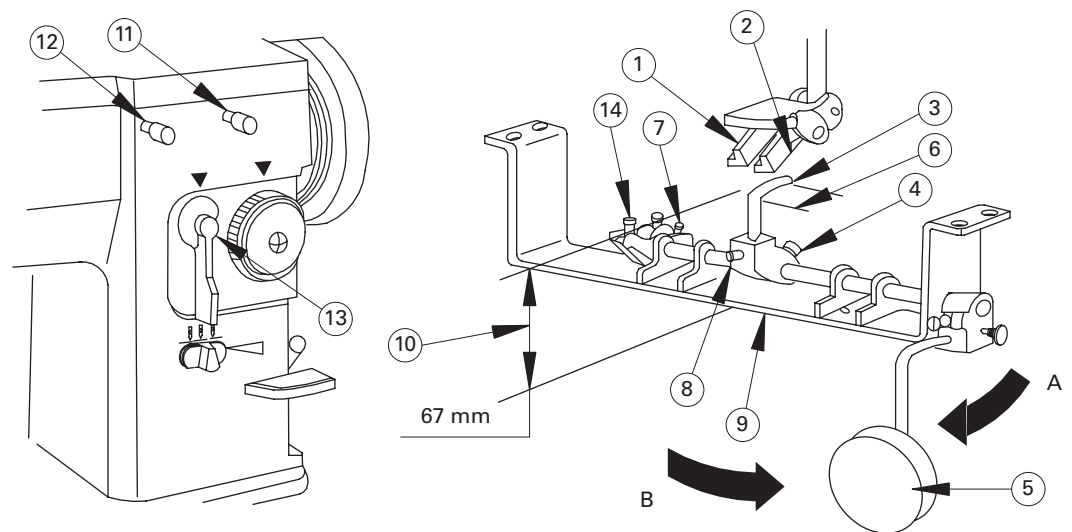


Figure 33

3.24

Fittings for Buttonhole Stitching

Buttonhole Foot '1', Needle plate '2' (Zigzag stitch) and Feed Dog '3' are used for buttonhole stitching. (Figure 35)

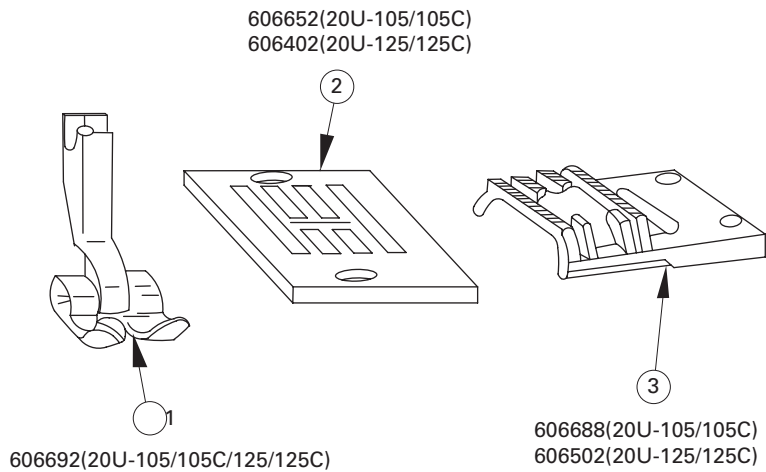


Figure 34

3.25

Fittings for Hem Sewing

The hem foot '1', needle plate '2' (Straight stitch) and feed dog '3' can turn and stitch a narrow hem in a single operation as the following condition. (Figure 36 and 37)

1. Needle position selector:
Center position
2. Stitch width regulate:
Straight stitch position.

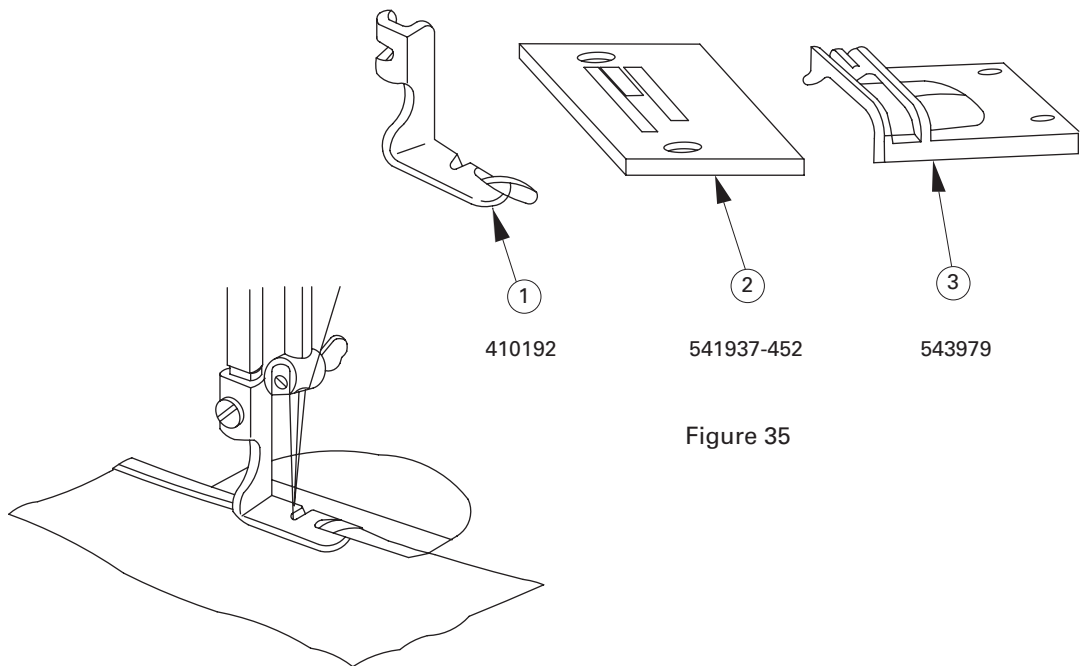


Figure 36

Figure 35

3.26

Fittings for Zipper and Cord Sewing

Caution

Switch off the machine.

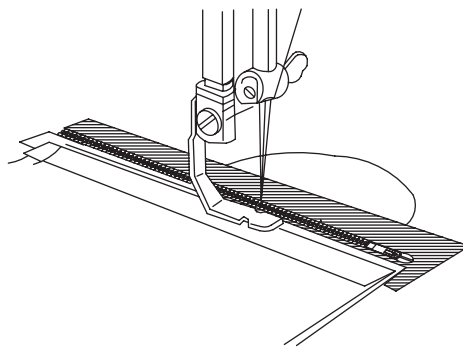
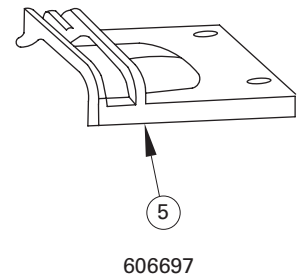
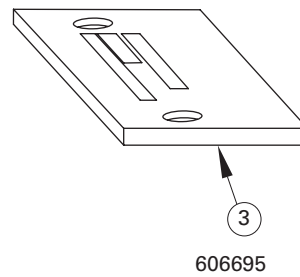
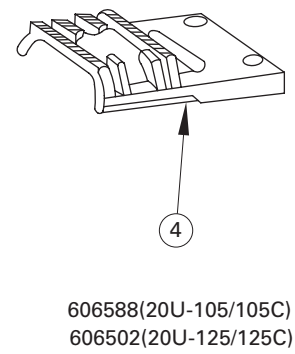
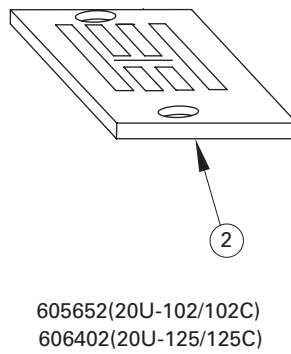
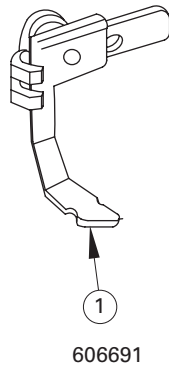
The zipper presser foot '1' is designed to facilitate the placement of stitching closed to a raised edge as the following condition. (Figure 38)

1. Needle position selector: Center position

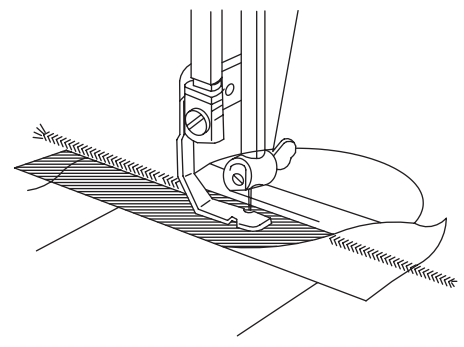
2. Stitch width regulate: Straight stitch position

3. Needle plate: Straight stitch '3' Zigzag stitch '2'

4. Feed dog: Straight stitch '5' Zigzag stitch '4'



Zipper insertion



Corded seams

Figure 37

4

Maintenance

4.1

Machine Head Cleaning

Clean the machine periodically with a soft and dry cloth to remove the excess of dust on the machine head. Do not use any kind of lacquer thinner to wipe the surface.

4.2

Lubrication

If the machine was idle for a long time, lubricate the machine according to the instructions of topics 3.4

4.3

Safety Inspection

Check periodically if all safety devices are properly installed and adjusted.

Check if all fixing and supporting screws of the machine head are adequately tighten.

Check if the v-belt is not excessively worn and if it has the right tension.

Check if there is no overheating in the electrical motor and check if the power cord and plug are not damaged.

5

Troubleshooting

Whenever sewing difficulty is encountered, check and make adjustments as follows.

Problem	Possible Causes	Possible Solutions
Needle thread breaks	1. Is machine properly threaded	1. Correct needle threading
	2. Are thread guides or tension disc area lint-free	2. Remove lint & fluff from bobbin case & hook
	3. Is needle-thread tension too tight	3. Adjust needle thread tension
	4. Is needle bent or has a blunt point	4. Insert new needle
	5. Is needle inserted correctly	5. Insert needle correctly
	6. Is needle the correct size for thread & fabric	6. Select proper needle size & thread
	7. Is poor quality thread	7. Change the thread
Bobbin thread breaks	1. Is bobbin threading correct	1. Correct bobbin threading
	2. Is thread tangled or caught	2. Untangle thread from bobbin case & hook
	3. Is thread tension correct	3. Adjust needle & bobbin case thread tension
	4. Does bobbin rotate smoothly	4. Check whether bobbin thread is wound correctly
Skip stitches	1. Is needle inserted correctly	1. Insert needle correctly
	2. Is needle bent or has blunt needle point	2. Insert new needle
	3. Is size of needle & thread suitable for fabric	3. Select proper needle size & thread
	4. Is threading correct	4. Correct needle threading
Needle break	1. Is needle installed wrong	1. Install needle correctly
	2. Is needle bent	2. Replace needle
	3. Is needle the correct size for the fabric	3. Select proper needle & thread for fabric
	4. Is needle clamping screw loose	4. Tighten needle set screw
	5. Is the fabric pulled while sewing	5. Do not pull fabric while sewing
Fabric fails to feed	1. Is feed regulating dial properly adjusted	1. Lengthen stitch length by feed regulating dial
	2. Is presser foot pressure adjusted properly	2. Adjust correct presser foot pressure
Fabric puckers	1. Is needle threading correct	1. Correct needle threading
	2. Is needle point blunt	2. Replace needle
	3. Is thread tension too tight	3. Adjust needle tension properly
Rotating heavy noise	1. Is there any lint or fluff on feed dog	1. Remove lint & fluff from feed dog
	2. Is there any lint in rotating hook	2. Remove lint & fluff from rotating hook
Machine fails to start	1. Are electrical plugs properly connected	1. Turn on power switch
	2. Is power & light switch turned on	2. Connect plug to power source

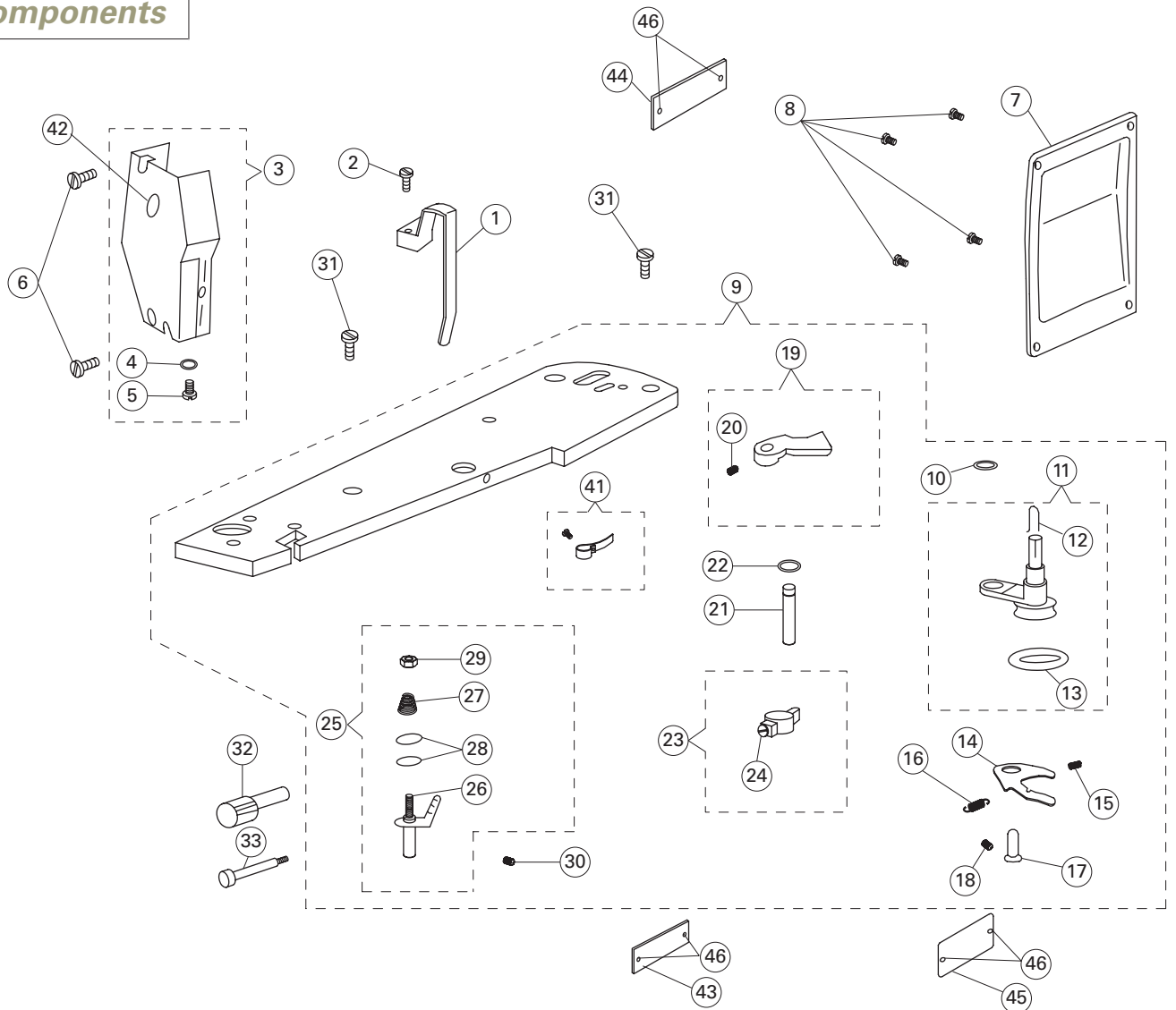
***** If you still have difficulty in sewing even after making adjustments, contact your nearest Service Center.**

6

Parts List

6.1

Face Plate, Arm Top Cover and Arm Side Cover Components



No.	Part No.	Description	Qty			
			105	105C	125	125C
1	554113-383	Thread take-up guard	1	1	1	1
2	606407	Take-up guard screw	1	1	1	1
3	606395	Face plate assembly	1	1	1	1
4	606632	Thread guide	1	1	1	1
5	606633	Thread guide screw	1	1	1	1
6	606634	Screw	2	2	2	2
7	554118-385	Back cover	1	1	1	1
8	606635	Screw	4	4	4	4
9	606433	Arm top cover assembly	1	1	1	1
10	606636	Thrust washer	1	1	1	1

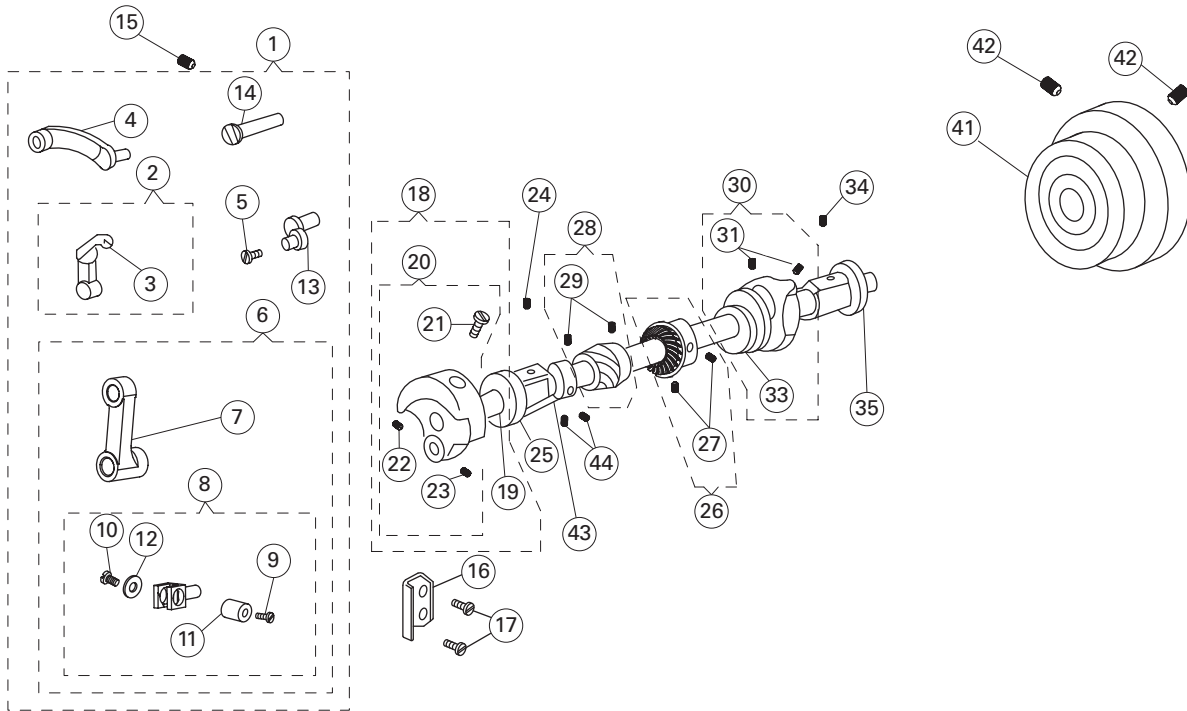
6.1

Face Plate, Arm Top Cover and Arm Side Cover Components

No.	Part No.	Description	Qty			
			105	105C	125	125C
11	606454	Bobbin winder bracket assembly	1	1	1	1
12	606637	Spring	1	1	1	1
13	606638	Friction o-ring	1	1	1	1
14	606452	Bobbin winder regulating plate	1	1	1	1
15	606453	Spring	1	1	1	1
16	606449	Spring	1	1	1	1
17	606451	Hinge stud	1	1	1	1
18	606439	Set screw	1	1	1	1
19	550032	Bobbin winder lever assembly	1	1	1	1
20	544208-005	Bobbin winder lever set screw	1	1	1	1
21	606447	Bobbin winder lever stud	1	1	1	1
22	606448	Bobbin winder lever stud ring	1	1	1	1
23	606446	Bobbin winder regulator assembly	1	1	1	1
24	544208-005	Bobbin winder regulator screw	1	1	1	1
25	606639	Bobbin winder tension assembly	1	1	1	1
26	606440	Bobbin winder tension stud	1	1	1	1
27	606442	Bobbin winder tension spring	1	1	1	1
28	606441	Bobbin winder tension disc	1	1	1	1
29	606443	Bobbin winder tension nut	1	1	1	1
30	606439	Screw	1	1	1	1
31	606602	Arm top cover screw	2	2	2	2
32	606398	Eccentric lock	1	1	1	1
33	544212-001	Stopper screw	1	1	1	1
42	J900112-001	Singer 'S' cameo	1	1	1	1
43	J900112-002	Singer logo resin plate (front)	1	1	1	1
44	J900112-003	Singer logo resin plate (back)	1	1	1	1
45	J900020-xxx	Model plate	1	1	1	1
46	R03001	Rivet	6	6	6	6

6.2

Thread Take-up, Arm Shaft and Handwheel Components



No.	Part No.	Description	Qty			
			105	105C	125	125C
1	606640	Thread take-up assembly	1	1	1	1
2	606475	Thread take-up	1	1	1	1
3	606474	Thread take-up eyelet	1	1	1	1
4	606641	Thread take-up lever link	1	1	1	1
5	606471	Needle bar connecting link cap screw	1	1	1	1
6	606642	Needle bar connecting link assembly	1	1	1	1
7	606472	Needle bar connecting link	1	1	1	1
8	606466	Needle bar connecting stud assembly	1	1	1	1
9	606468	Set screw	1	1	1	1
10	606464	Needle bar connecting hinge pin screw	1	1	1	1

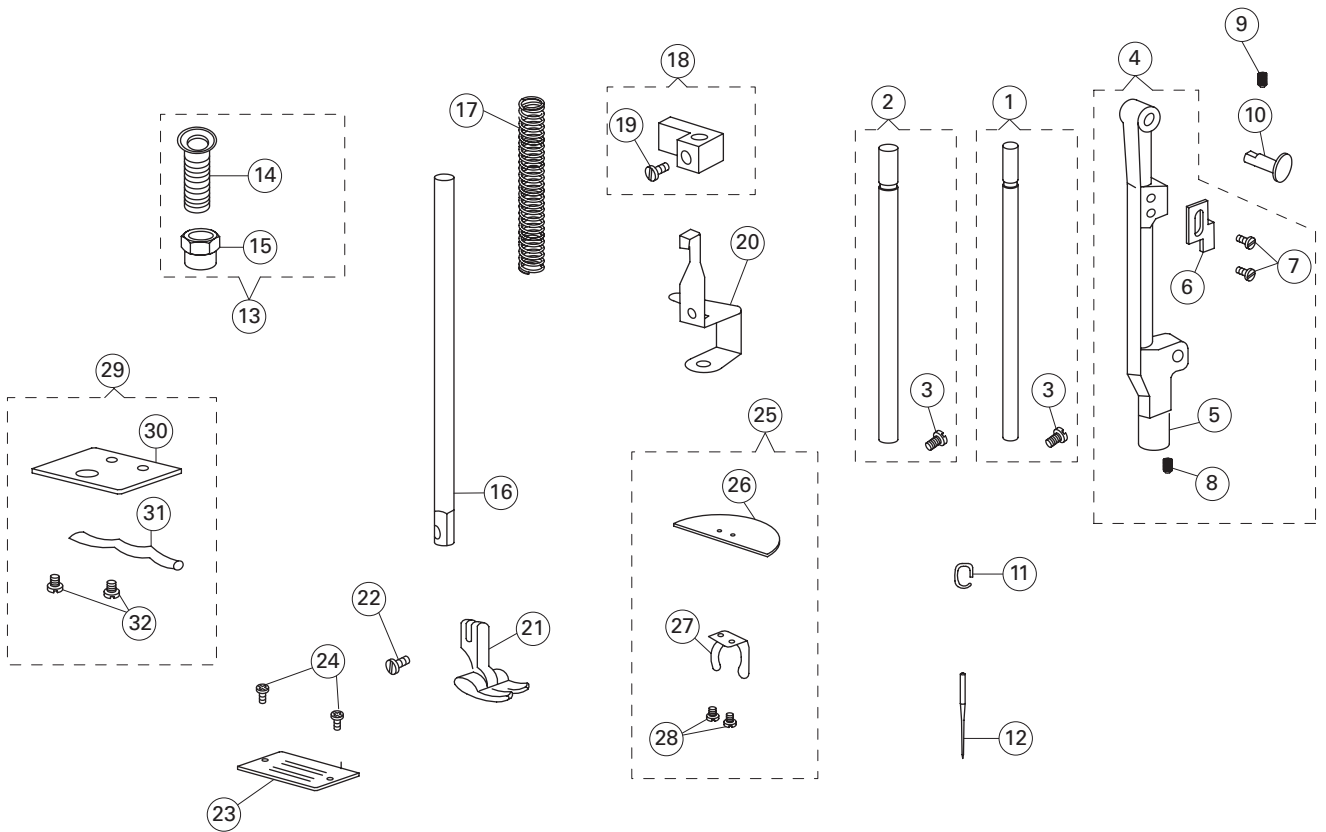
6.2

Thread Take-up, Arm Shaft and Handwheel Components

No.	Part No.	Description	Qty			
			105	105C	125	125C
11	606467	Needle bar connecting hinge pin	1	1	1	1
12	606465	Washer	1	1	1	1
13	606473	Thread take-up crank	1	1	1	1
14	606643	Hinge stud	1	1	1	1
15	606420	Hinge stud set screw	1	1	1	1
16	606469	Guide	1	1	1	1
17	606444	Screw	2	2	2	2
18	606644	Arm shaft and needle bar crank assembly	1	1	1	1
19	606484	Arm shaft	1	1	1	1
20	606477	Needle bar crank assembly	1	1	1	1
21	606447	Needle bar crank position screw	1	1	1	1
22	504066	Position screw	1	1	1	1
23	504101	Crank set screw	1	1	1	1
24	606480	Bushing (front) set screw	1	1	1	1
25	606481	Bushing (front)	1	1	1	1
26	541606	Bevel gear assembly	1	1	1	1
27	504066	Bevel gear set screw	2	2	2	2
28	541607	Worm gear assembly	1	1	1	1
29	504028	Worm gear screw	2	2	2	2
30	606483	Feed eccentric assembly	1	1	1	1
31	606482	Feed eccentric screw	2	2	2	2
33	606645	Retaining ring	1	1	1	1
34	606480	Arm shaft bushing screw	1	1	1	1
35	606485	Arm shaft bushing, back	1	1	1	1
41	606489	Handwheel	1	1	1	1
42	606420	Screw	2	2	2	2
43	606712	Retaining collar assembly	1	1	1	1
44	606713	Retaining collar screw	2	2	2	2

6.3

Needle Bar, Presser Bar and Needle Plate Components



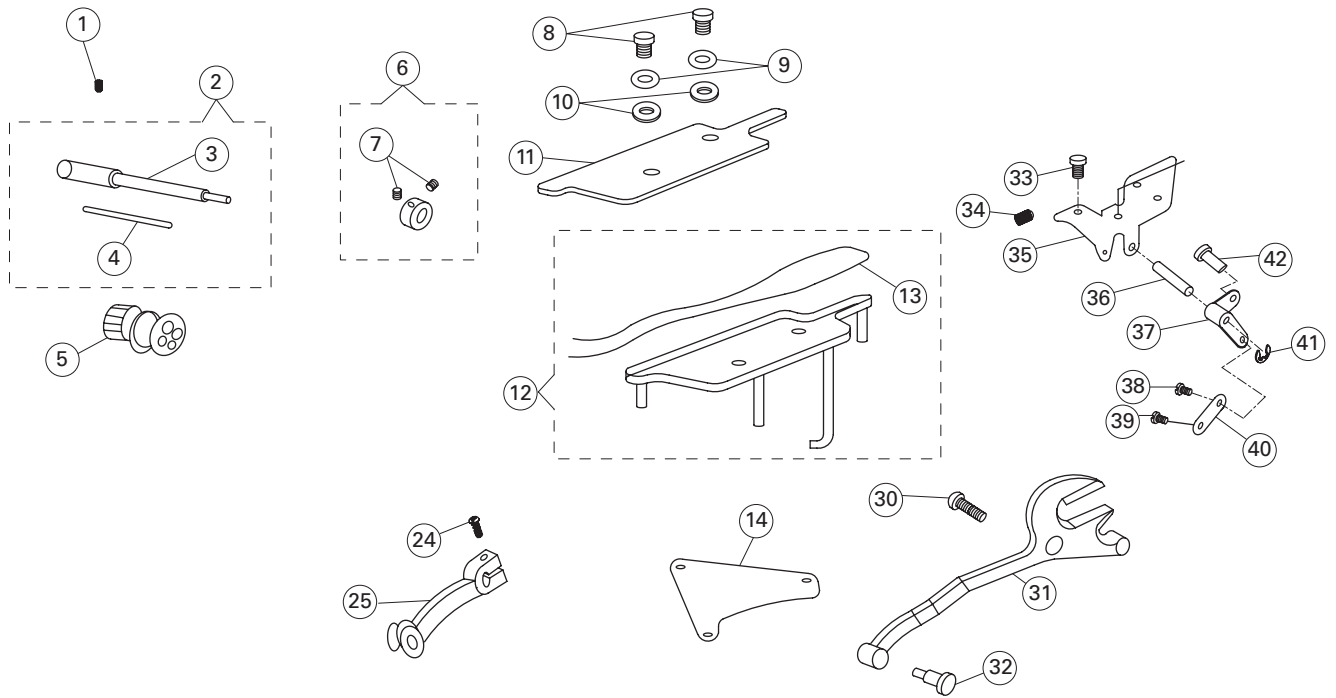
6.3

Needle Bar, Presser Bar and Needle Plate Components

No.	Part No.	Description	Qty			
			105	105C	125	125C
1	606646	Needle bar	1	1	0	0
2	606461	Needle bar	0	0	1	1
3	606463	Needle clamp screw	1	1	1	1
4	606647	Needle bar frame assembly	1	1	1	1
5	606456	Needle bar frame	1	1	1	1
6	606458	Indicator plate	1	1	1	1
7	606459	Indicator plate screw	2	2	2	2
8	606457	Eccentric pin set screw	1	1	1	1
9	606516	Set screw	1	1	1	1
10	606460	Needle bar frame pin	1	1	1	1
11	GR466-8	Needle bar tread guard	1	1	0	0
	GR252-8	Needle bar tread guard	0	0	1	1
12	1910-05	Needle (1910-05 #14)	1	1	1	1
13	606648	Presser bar thumb screw & nut assembly	1	1	1	1
14	606592	Presser bar thumb screw	1	1	1	1
15	606649	Presser bar thumb screw nut	1	1	1	1
16	606594	Presser bar	1	1	1	1
17	606593	Presser bar spring	1	1	1	1
18	606600	Presser bar bracket assembly	1	1	1	1
19	606599	Screw	1	1	1	1
20	606601	Presser bar lifting bracket	1	1	1	1
21	606650	Presser foot assembly	1	1	0	0
	606651	Presser foot assembly	0	0	1	1
22	606444	Presser foot screw	1	1	1	1
23	606652	Needle plate	1	1	0	0
	606402	Needle plate	0	0	1	1
24	606403	Needle plate screw	1	1	1	1
25	606653	Bed plate assembly	1	1	1	1
26	606404	Bed plate	1	1	1	1
27	606405	Bed plate spring	1	1	1	1
28	606401	Bed plate screw	2	2	2	2
29	606654	Slide plate assembly	1	1	1	1
30	606399	Slide plate	1	1	1	1
31	606400	Slide plate spring	1	1	1	1
32	606401	Slide plate spring screw	2	2	2	2

6.4

Zigzag Triangular Cam and Hook Advancing Crank Components



No.	Part No.	Description	Qty			
			105	105C	125	125C
1	606620	Set screw	1	1	1	1
2	606539	Cam shaft assembly	1	1	1	1
3	606655	Cam shaft	1	1	1	1
4	606656	Cam shaft oil wick	1	1	1	1
5	410031	Zigzag cam and gear assembly	1	1	0	0
	410056	Zigzag cam and gear assembly	0	0	1	1
6	606542	Cam shaft collar assembly	1	1	1	1
7	606541	Collar set screw	2	2	2	2
8	606444	Screw	2	2	2	2
9	606590	Spring washer	2	2	2	2
10	606589	Washer	2	2	2	2

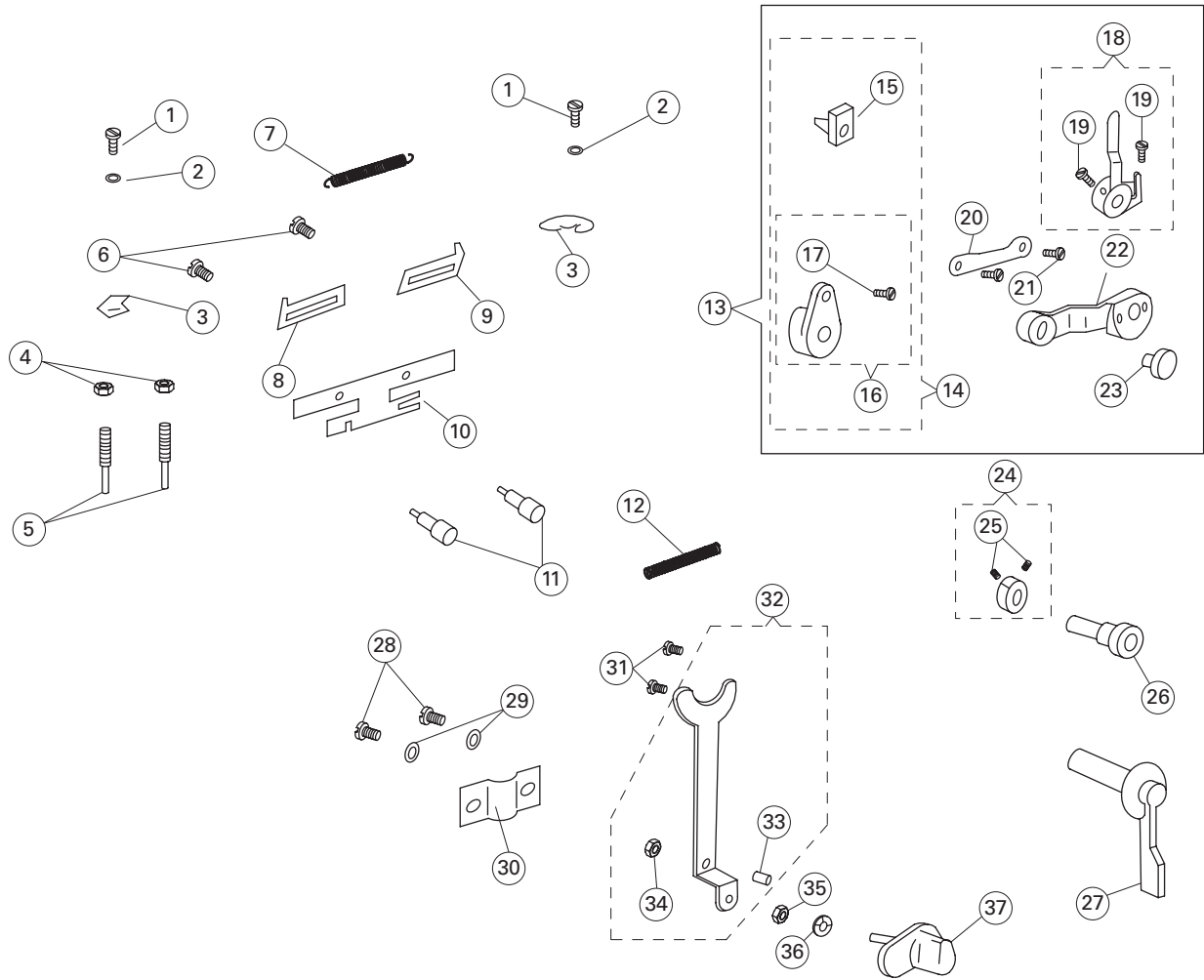
6.4

Zigzag Triangular Cam and Hook Advancing Crank Components

No.	Part No.	Description	Qty			
			105	105C	125	125C
11	606588	Oil felt	1	1	1	1
12	606657	Oil reservoir assembly	1	1	0	0
	606586	Oil reservoir assembly	0	0	1	1
13	606658	Oil wick	1	1	1	1
14	606659	Oil reservoir bracket	1	1	0	0
30	606664	Slide block cap screw	1	1	1	1
31	606663	Zigzag stitch regulator fork	1	1	0	0
	606538	Zigzag stitch regulator fork	0	0	1	1
32	606545	Fork eccentric connection pin	1	1	1	1
33	GS256-8	Screw of locating rack	0	0	1	1
34	GS213-8	Screw of locating rack sleeve	0	0	1	1
35	GR390/2-8	Locating rack assembly	0	0	1	1
36	GZ175-8	Differential connecting shaft	0	0	1	1
37	GH210/3-8	Differential crank assembly	0	0	1	1
38	GS216-8	Screw of differential connecting bar	0	0	1	1
39	GS217-8	Connecting screw for sliding block	0	0	1	1
40	GH179-8	Differential connecting shaft	0	0	1	1
41	GO177-8	Differential connecting shaft snap ring	0	0	1	1
42	GS219-8	Differential connecting bar	0	0	1	1

6.5

Bight Amplitude, and Bight L-C-R Position Components



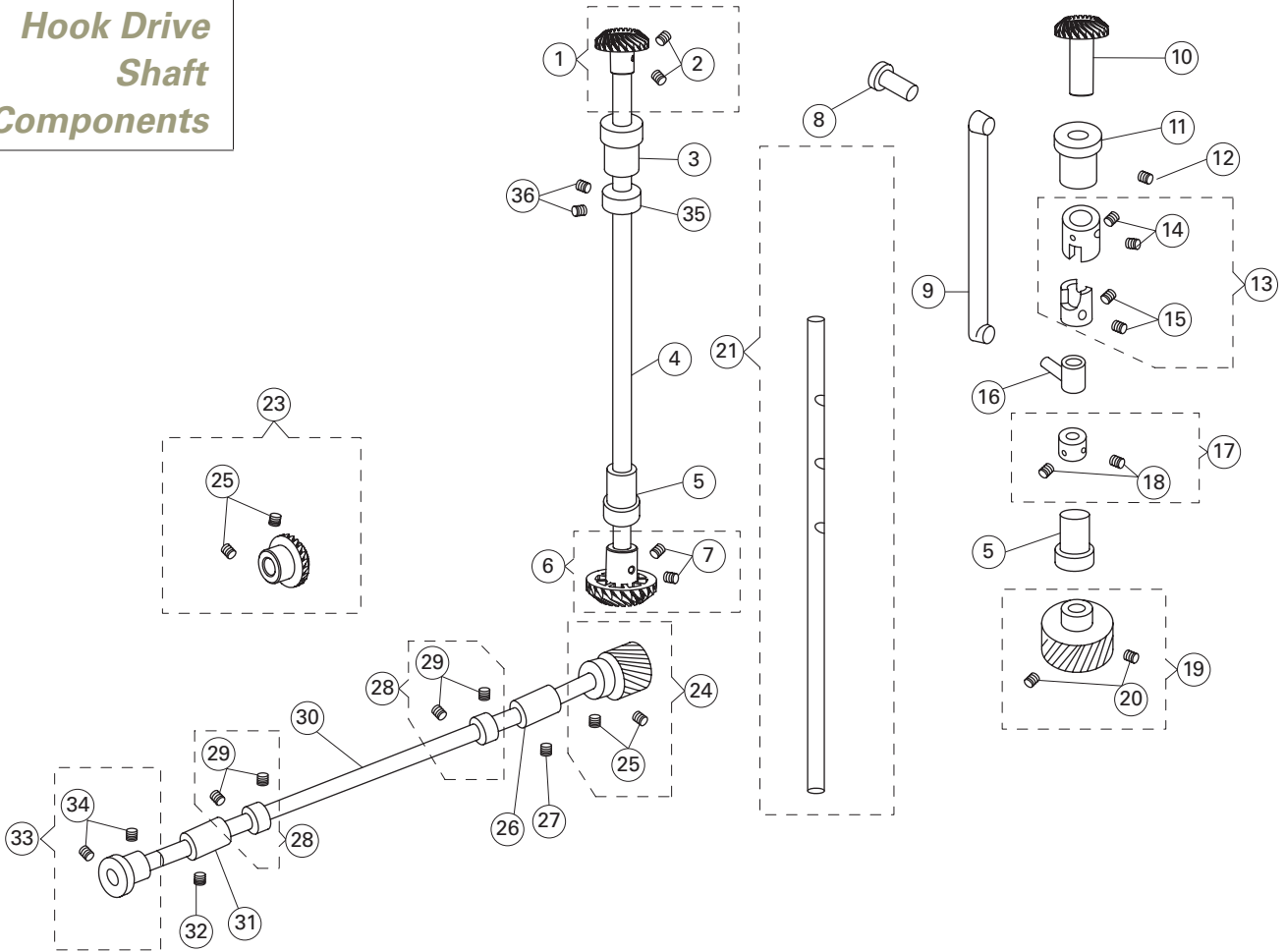
6.5

Bight Amplitude, and Bight L-C-R Position Components

No.	Part No.	Description	Qty			
			105	105C	125	125C
1	606511	Screw	2	2	2	2
2	606571	Washer	2	2	2	2
3	606569	Stop plate	2	2	2	2
4	606554	Lever arm regulating screw nut	2	2	2	2
5	606553	Lever arm regulating screw	2	2	2	2
6	606572	Screw	2	2	2	2
7	606577	Spring	1	1	1	1
8	606575	Regulating plate (left)	1	1	1	1
9	606576	Regulating Plate (right)	1	1	1	1
10	606574	Regulating plate holder	1	1	1	1
11	606573	Thumb screw	2	2	2	2
12	606556	Spring	1	1	1	1
13	606665	Bight amplitude control mech. assembly	1	1	0	0
	606666	Bight amplitude control mech. assembly	0	0	1	1
14	606667	Slide block & guide assembly	1	1	0	0
	606668	Slide block & guide assembly	0	0	1	1
15	606546	Slide block	1	1	1	1
16	606669	Slide block guide assembly	1	1	0	0
	606547	Slide block guide assembly	0	0	1	1
17	606670	Guide stud set screw	1	1	1	1
18	606557	Slide block crank assembly	1	1	1	1
19	606555	Slide block crank set screw	2	2	2	2
20	606549	Slide block crank link	1	1	1	1
21	606671	Hinge screw	2	2	2	2
22	606551	Position lever arm	1	1	1	1
23	606552	Guide stud	1	1	1	1
24	606560	Collar assembly	1	1	1	1
25	606518	Collar set screw	2	2	2	2
26	606562	Crank shaft bushing	1	1	1	1
27	554139-383	Crank shaft knob assembly	1	1	1	1
28	606564	Position block screw	2	2	2	2
29	606568	Position block screw washer	2	2	2	2
30	606673	Position block	1	1	0	0
	606563	Position block	0	0	1	1
31	606674	Position lever screw	2	1	1	1
32	606566	Position lever assembly	1	1	1	1
33	606565	Position lever screw pin	1	1	1	1
34	606675	Position lever screw pin nut	1	1	1	1
35	606675	Thumb stud nut	1	1	1	1
36	606676	Thumb stud spring washer	1	1	1	1
37	554140-383	Thumb stud	1	1	1	1

6.6

Arm Shaft (upright) and Rotating Hook Drive Shaft Components



No.	Part No.	Description	Qty			
			105	105C	125	125C
1	541610	Bevel gear assembly (upper)	1	1	0	0
2	504101	Bevel gear set screw	2	1	0	0
3	606677	Arm shaft bushing (upper)	1	1	0	0
4	606678	Arm shaft (upright)	1	1	0	0
5	606527	Upright bushing (lower)	1	1	1	1
6	541609	Bevel gear assembly (lower)	1	1	0	0
7	504101	Bevel gear set screw	2	2	0	0
8	606585	Connection screw	0	0	1	1
9	606536	Hook advance crank connecting rod	0	0	1	1
10	606535	Bevel gear (upper)	0	0	1	1

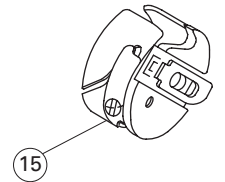
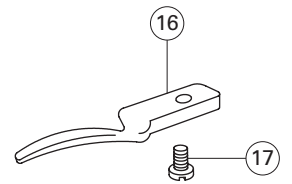
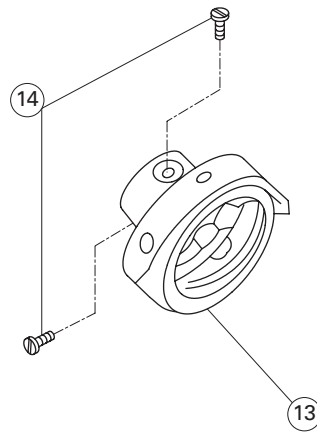
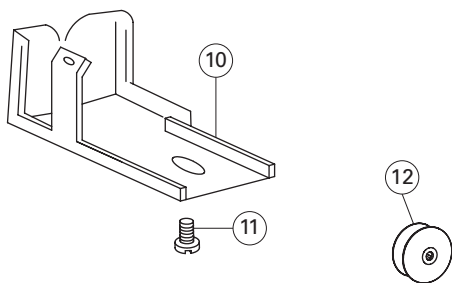
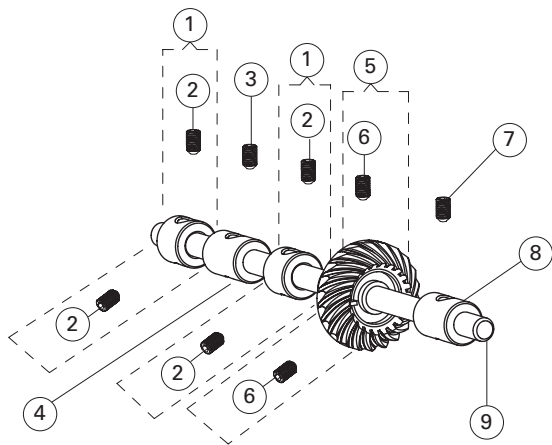
6.6

Arm Shaft (upright) and Rotating Hook Drive Shaft Components

No.	Part No.	Description	Qty			
			105	105C	125	125C
11	606533	Upright bushing (upper)	0	0	1	1
12	606534	Bushing set screw	0	0	1	1
13	606679	Clutch sleeve assembly	0	0	1	1
14	504101	Clutch sleeve (upper) screw	0	0	2	1
15	504101	Clutch sleeve screw	0	0	2	1
16	606528	Connecting stud	0	0	1	1
17	606523	Retaining collar assembly	0	0	1	1
18	504101	Retaining collar screw	0	0	2	2
19	543914	Screw gear assembly	0	0	1	1
20	504101	Gear set screw	0	0	2	2
21	606537	Arm shaft (upright) assembly	0	0	1	1
23	541684	Hook drive shaft bevel gear assembly (back)	1	1	0	0
24	543944	Hook drive shaft screw gear assembly (back)	0	0	1	1
25	504101	Hook drive shaft screw gear set screw	2	2	2	2
26	606681	Hook drive shaft bushing (back)	1	1	0	0
	606525	Hook drive shaft bushing (back)	0	0	1	1
27	606420	Set screw	1	1	1	1
28	606523	Retaining collar assembly	1	1	0	0
	606523	Retaining collar assembly	0	0	2	2
29	504101	Retaining collar screw	2	2	0	0
	504101	Retaining collar screw	0	0	4	4
30	606682	Hook drive shaft	1	1	0	0
	606526	Hook drive shaft	0	0	1	1
31	606522	Hook drive shaft bushing (front)	1	1	1	1
32	606420	Set screw	1	1	1	1
33	541685	Hook drive shaft bevel gear assembly (front)	1	1	1	1
34	504101	Bevel gear screw	2	2	2	2
35	606523	Arm shaft (upright) collar assembly	1	1	0	0
36	504101	Arm shaft (upright) collar screw	2	2	0	0

6.7

Hook and
Bobbin Case
Components



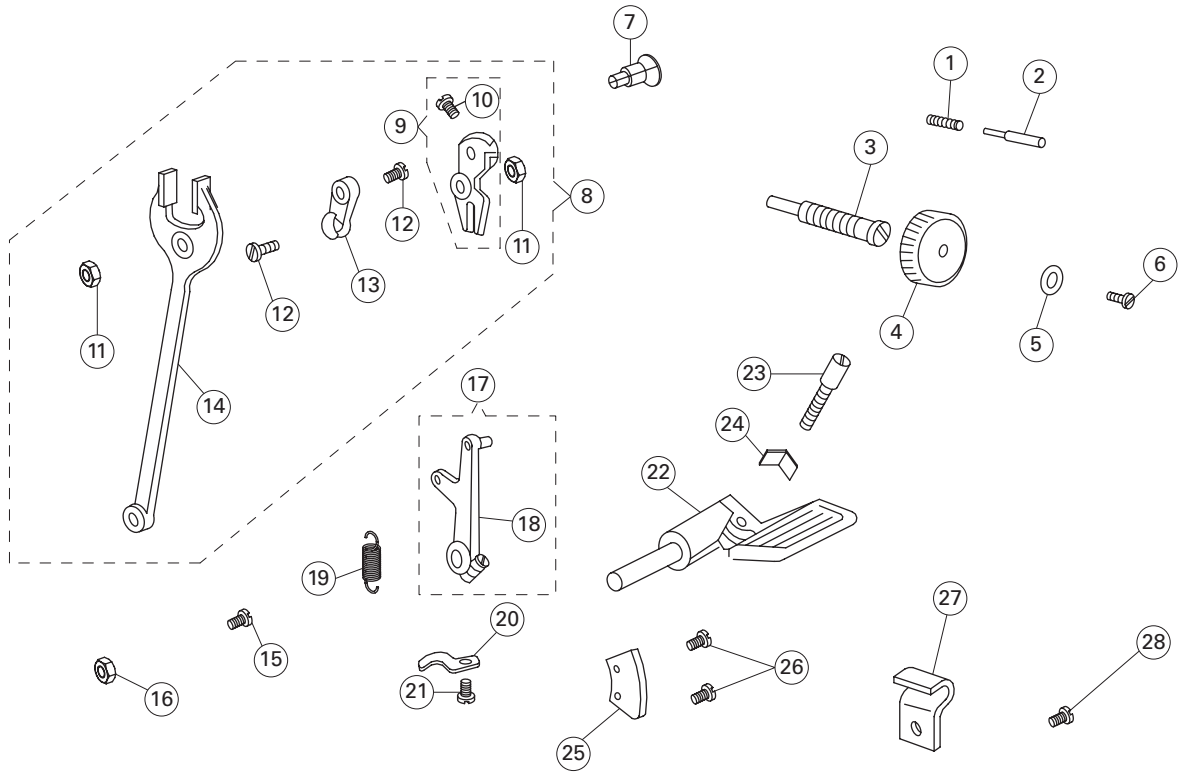
6.7

Hook and Bobbin Case Components

No.	Part No.	Description	Qty			
			105	105C	125	125C
1	606517	Hook shaft collar assembly	2	2	2	2
2	606518	Hook shaft collar screw	4	4	4	4
3	606516	Set screw	1	1	1	1
4	606519	Hook shaft bushing (short)	1	1	1	1
5	541689	Bevel gear assembly	1	1	1	1
6	504101	Bevel gear screw	2	2	2	2
7	606516	Set screw	1	1	1	1
8	606515	Hook shaft bushing (long)	1	1	1	1
9	606520	Hook shaft	1	1	1	1
10	606410	Gear shield	1	1	1	1
11	606444	Screw	1	1	1	1
12	606513	Bobbin	1	1	1	1
13	606683	Rotating hook assembly	1	0	0	0
	606683C	Rotating hook assembly	0	1	0	0
	606514	Rotating hook assembly	0	0	1	0
	606514C	Rotating hook assembly	0	0	0	1
14	606684	Rotating hook set screw	2	2	2	2
15	606512	Bobbin case assembly	1	1	1	1
16	606510	Hook position finger	1	1	1	1
17	606511	Position finger screw	1	1	1	1

6.8

Feed Regulating Dial and Feed Reverse Lever Components



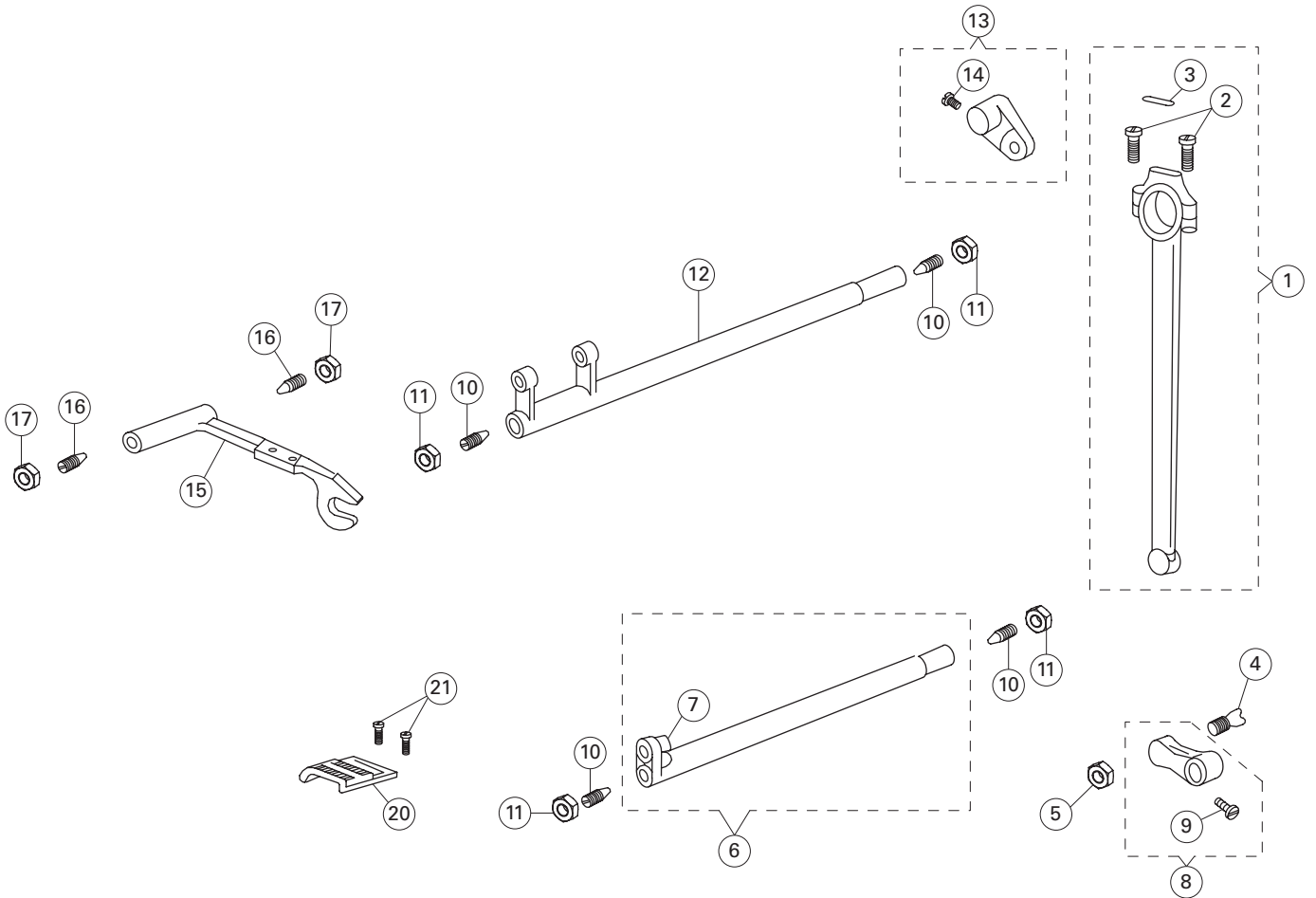
6.8

Feed Regulating Dial and Feed Reverse Lever Components

No.	Part No.	Description	Qty			
			105	105C	125	125C
1	606618	Spring	1	1	1	1
2	606617	Stud lock pin	1	1	1	1
3	606609	Feed regulating stud	1	1	1	1
4	554138-383	Feed regulating dial	1	1	1	1
5	543803-004	Dial screw washer	1	1	1	1
6	544218-053	Dial screw	1	1	1	1
7	606610	Hinge stud	1	1	1	1
8	606685	Feed regulator & fork assembly	1	1	1	1
9	606611	Feed regulator assembly	1	1	1	1
10	606686	Screw	1	1	1	1
11	606494	Hinge screw nut	1	1	1	1
12	606496	Hinge screw	2	2	2	2
13	606495	Feed connecting link	2	2	2	2
14	606509	Feed fork connection.	1	1	1	1
15	606496	Hinge screw	1	1	1	1
16	606494	Hinge screw nut	1	1	1	1
17	606615	Reverse lever link assembly	1	1	1	1
18	606434	Clamp screw	1	1	1	1
19	606612	Spring	1	1	1	1
20	606614	Spring bracket	1	1	1	1
21	606602	Screw	1	1	1	1
22	554131-467	Reverse lever assembly	1	1	1	1
23	374564	Adjusting screw	1	1	1	1
24	554134	Adjusting screw friction	1	1	1	1
25	554136	Indicator plate	1	1	1	1
26	504010-453	Indicator plate screw	2	2	2	2
27	554135	Adjusting screw stopper	1	1	1	1
28	544213-001	Stopper set screw	1	1	1	1

6.9

*Feed
Mechanism
Components*



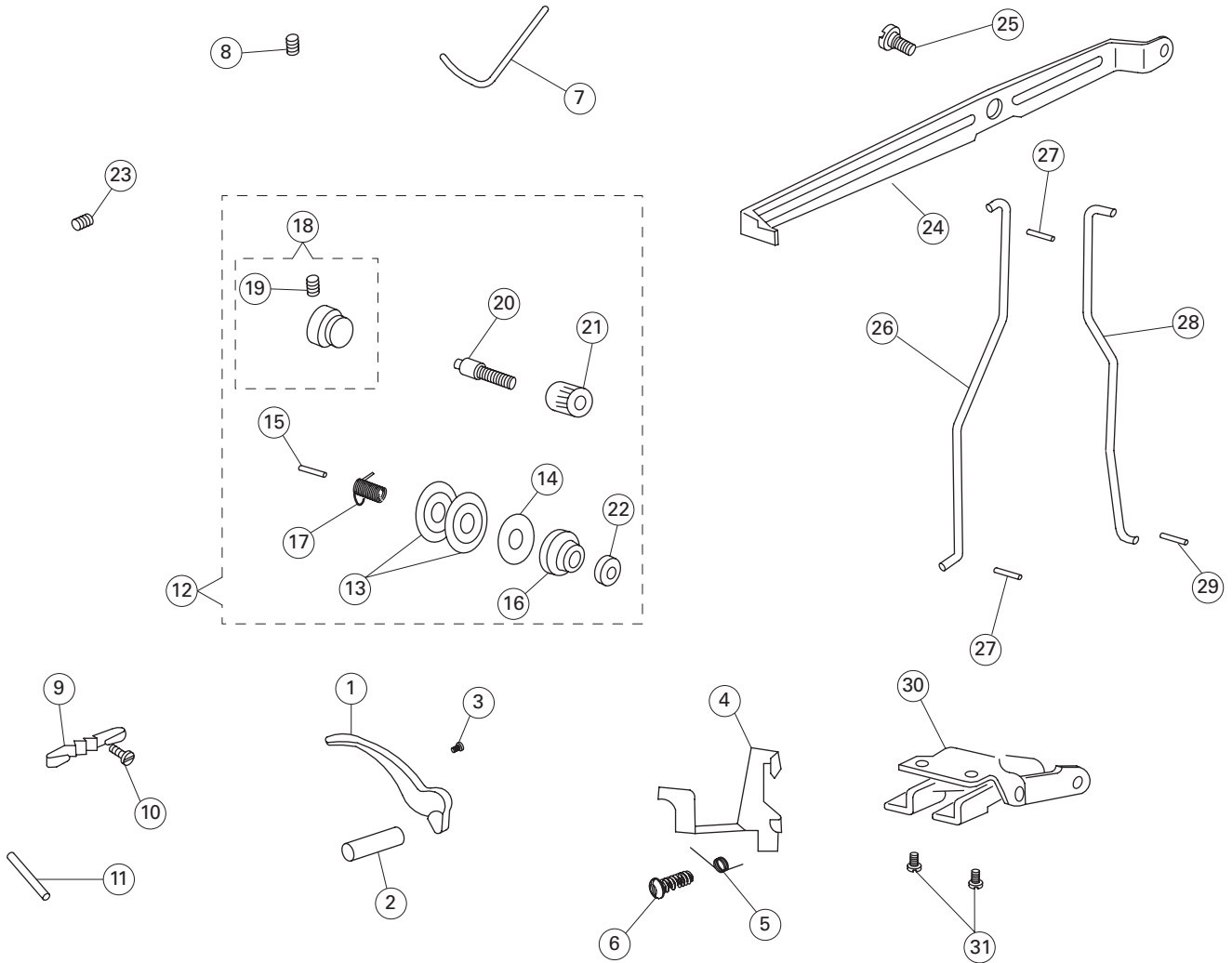
6.9

Feed Mechanism Components

No.	Part No.	Description	Qty			
			105	105C	125	125C
1	606493	Connecting rod assembly	1	1	1	1
2	606434	Connecting rod cap screw	2	2	2	2
3	606492	Oil felt	1	1	1	1
4	606496	Hinge screw	1	1	1	1
5	606494	Hinge screw nut	1	1	1	1
6	606507	Feed lifting rock shaft assembly	1	1	1	1
7	606687	Roller and Stud	1	1	1	1
8	606508	Lifting rock shaft crank assembly	1	1	1	1
9	606500	Crank clamping screw	1	1	1	1
10	606497	Screw center	4	4	4	4
11	606498	Screw center nut	4	4	4	4
12	606505	Feed rock shaft	1	1	1	1
13	606499	Feed rock shaft crank assembly	1	1	1	1
14	606500	Crank clamping screw	1	1	1	1
15	606506	Feed bar	1	1	1	1
16	606503	Screw center	2	1	1	1
17	606504	Screw center nut	2	1	1	1
20	606688	Feed dog	1	1	0	0
	606502	Feed dog	0	0	1	1
21	606501	Feed dog screw	2	2	2	2

6.10

**Presser Bar
Lifter and
Thread
Tension
Components**



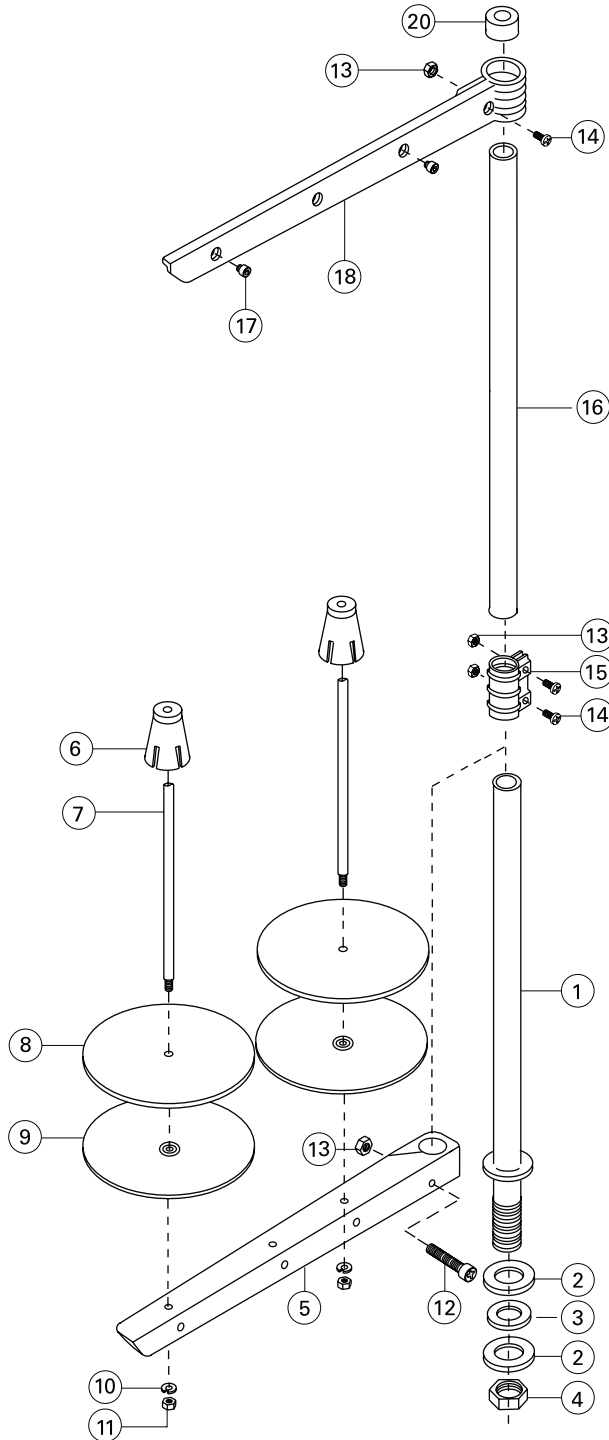
6.10

**Presser Bar
Lifter and
Thread
Tension
Components**

No.	Part No.	Description	Qty			
			105	105C	125	125C
1	606598	Hand lifter lever	1	1	1	1
2	606597	Hand lifter lever pin	1	1	1	1
3	606599	Screw	1	1	1	1
4	606413	Tension release lever	1	1	1	1
5	606412	Tension release lever screw spring	1	1	1	1
6	606411	Tension release lever screw	1	1	1	1
7	410413	Thread retainer	1	1	1	1
8	606518	Thread retainer screw	1	1	1	1
9	606416	Thread guide	1	1	1	1
10	606444	Thread guide screw	1	1	1	1
11	606414	Thread guard pin	1	1	1	1
12	606689	Tension assembly	1	1	1	1
13	606425	Tension disc	2	2	2	2
14	606426	Tension releasing disc	1	1	1	1
15	606418	Tension release pin	1	1	1	1
16	606427	Tension spring	1	1	1	1
17	606422	Thread Take-up Spring	1	1	1	1
18	606419	Tension base assembly	1	1	1	1
19	606421	Tension securing screw	1	1	1	1
20	606424	Tension stud	1	1	1	1
21	606429	Thumb nut	1	1	1	1
22	606428	Thumb nut washer	1	1	1	1
23	600420	Set screw	1	1	1	1
24	606607	Lifting lever	1	1	1	1
25	606608	Hinge screw	1	1	1	1
26	606605	Connecting rod	1	1	1	1
27	606604	Connecting rod pin	2	2	2	2
28	606606	Connecting rod	1	1	1	1
29	606604	Connecting rod pin	1	1	1	1
30	606603	Bell crank assembly	1	1	1	1
31	606602	Screw	2	2	2	2

6.11

Thread Stand Components



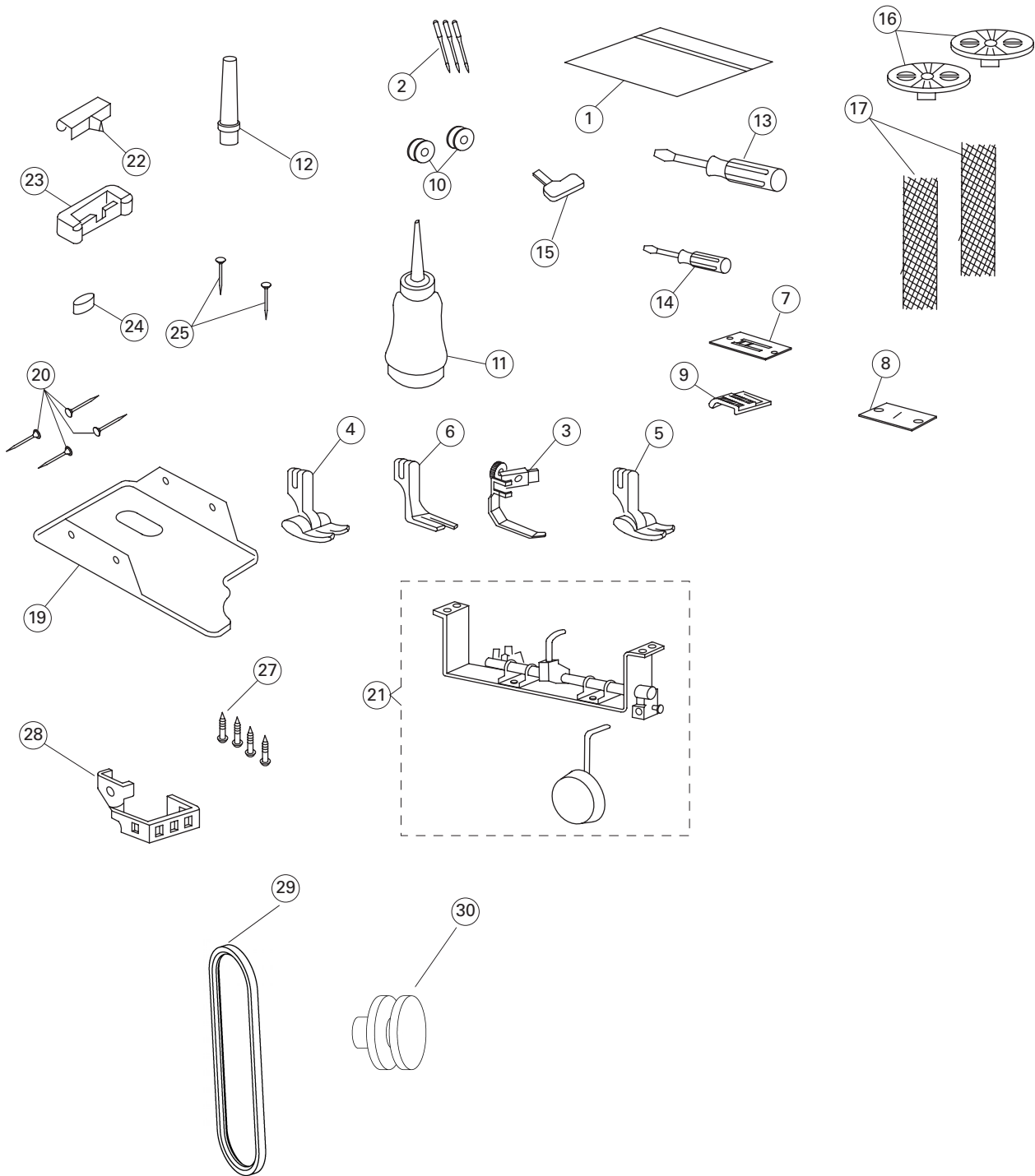
6.11

Thread Stand Components

No.	Part No.	Description	Qty			
			105	105C	125	125C
1	30102032	Thread bar (lower)	1	1	1	1
2	30128024	Washer	2	2	2	2
3	10128006	Rubber washer	1	1	1	1
4	N02001	Nut	1	1	1	1
5	30101029	Bracket (2 spools)	2	2	2	2
6	30103044	Spool holder	2	2	2	2
7	30102033	Spool pin	2	2	2	2
8	30123014	Cushion	2	2	2	2
9	30111007	Spool tray	2	2	2	2
10	W02002	Spring washer	2	2	2	2
11	N01005	Nut	2	2	2	2
12	L02004	Screw	1	1	1	1
13	N01004	Nut	4	4	4	4
14	S04002	Screw	4	4	4	4
15	30129005	Joint	1	1	1	1
16	30102034	Thread bar (upper)	1	1	1	1
17	30103045	Thread guide hole	2	2	2	2
18	30101031	Thread guide bar (2 spools)	1	1	1	1
20	30122027	Rod cap	1	1	1	1

6.12

Accessories
and
Attachments



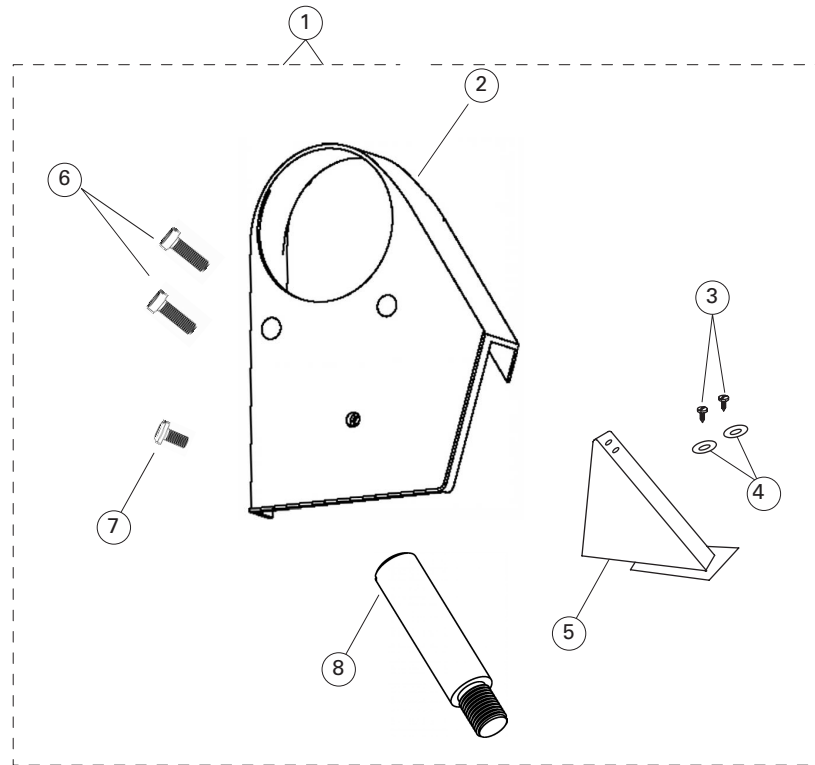
6.12

Accessories and Attachments

No.	Part No.	Description	Qty			
			105	105C	125	125C
1	606690	Accesspry box	1	1	1	1
2	1910-05	Needle (1910-05 #14)	3	3	3	3
3	606691	Zipper foot	1	1	1	1
4	606692	Presser foot assembly (for button holing)	1	1	1	1
5	606693	Presser foot assembly (for straight stitching)	1	1	1	1
6	606694	Hemmer foot assembly	1	1	1	1
7	606695	Needle plate (for straight stitching)	1	1	1	1
8	606696	Needle plate (for embroidery)	1	1	1	1
9	606697	Feed dog (for straight stitching)	1	1	1	1
10	606513	Bobbin	2	2	2	2
11	606698	Oiler	1	1	1	1
12	606699	Machine rest pin	1	1	1	1
13	606700	Screw driver(large)	1	1	1	1
14	606701	Screw driver(small)	1	1	1	1
15	606702	Screw driver(for needle plate)	1	1	1	1
16	606703	Thread spool cap	2	2	2	2
17	606704	Thread anti-spill net	2	2	2	2
19	606706	Drip pan	1	1	1	1
20	606707	Drip pan nail	4	4	4	4
21	606708	Knee lifter assembly	1	1	1	1
22	606709	Machine hinge	2	2	2	2
23	606710	Machine hinge cushion	2	2	2	2
24	606711	Machine cushion	4	4	4	4
25	606707	Nail	6	6	6	6
27	GB/T845	Screw	4	4	4	4
28	281822	Finger guard	4	4	4	4
29	101-12-17	Belt	1	1	1	1
30	401-09-02-01	Motor Pueey	1	1	1	1

6.13

Belt Cover Components



No.	Part No.	Description	Qty			
			105	105C	125	125C
1	281840-383	Belt cover assembly	1	1	1	1
2	404.06-05-01	Belt cover (upper)	1	1	1	1
3	549398	Belt cover (lower) wood screw	2	2	2	2
4	543803-003	Belt cover (lower) wood screw washer	2	2	2	2
5	281835-383	Belt cover (lower)	1	1	1	1
6	11-60121620-01	screw (SM3/16x28-16)	2	2	2	2
7	11-60111020-01	screw (SM11/64x40-10)	1	1	1	1
8	101-08-16	Oil pump connecting stud	1	1	1	1



SINGER and the Cameo "S" Design are exclusive trademarks of The Singer Company Limited S.à r.l. or its Affiliates.
©2017 The Singer Company Limited S.à r.l. or its Affiliates. All rights reserved.
www.singer.com