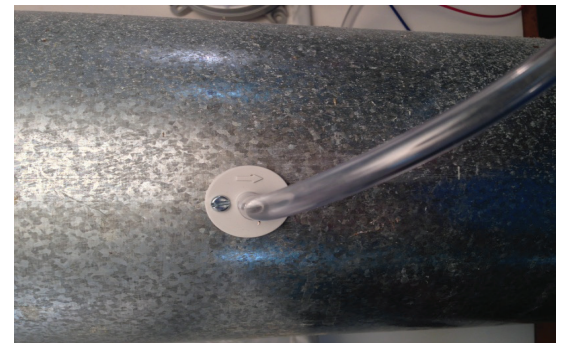


1. Mount RangeRelief Pressure Switch within 3ft (1m) of range hood duct.



2. Drill 9/32" (7mm) hole in kitchen range hood exhaust duct. Install pressure tap with supplied sheet metal screws.



3. Attach supplied vinyl tubing to pressure tap and to lower port on RangeRelief Pressure Switch.

Make sure the cap is removed from the top tap if it was installed for shipping.



4. Use supplied wire nuts to attach one wire from RangeRelief Switch to the **BLUE** wire on the AirCycler[®] motorized damper. Attach other wire from RangeRelief Switch to the **RED** wire on the AirCycler[®] motorized damper. *(Components in photo are mounted closely together for demonstration purposes only. For install, use additional length of wire as needed.)*

5. Turn on range hood and adjust settings on top of RangeRelief Switch until damper opens.

6. Turn off range hood and make sure damper closes.

