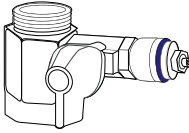


# UNIT INSTALLATION & SET UP

## STANDARD INSTALLATION ACCESSORIES

01



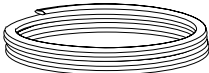
1 x Water Piping Diverter

02



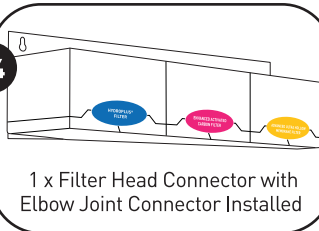
1 x Drinking Faucet and Accessories

03



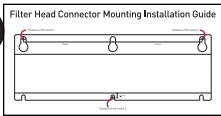
1 x 1/4" Water Hose (3 Metres)

04



1 x Filter Head Connector with Elbow Joint Connector Installed

05



1 x Mounting Installation Guide, Screws and Holders

## PRE-INSTALLATION NOTE

This product purchase is not inclusive of standard installation service. Please refer to the following installation information and options:

### 1. Self-Installation

Please refer to the "Operating Instructions Manual – Standard Installation" for standard installation procedure.

### 2. Authorised Outsource Installation Services

Please call/SMS Remus Service at 9852 6040 directly to arrange for appointment.

### 3. novita Installation Team Services

Standard installation service is available on purchase at [estore.novita.com.sg/np-services](https://estore.novita.com.sg/np-services).

## INSTALLATION SERVICE COST REFERENCE

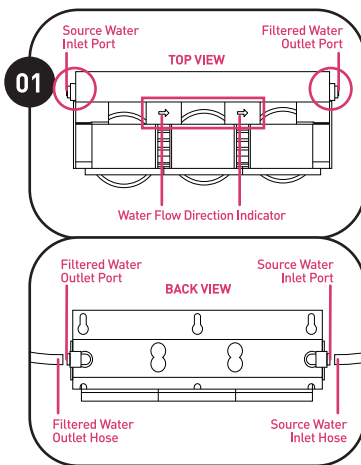
- Standard installation: S\$100/unit.
- For non-standard installation, please seek Remus Service for quotation.
- Please refer to the "Operating Instructions Manual-Standard Installation" for the standard installation details.
- Please note that installation should only be conducted by qualified technician/installer, from novita or authorised outsource installation services.

## STANDARD INSTALLATION

- Under standard installation, under sink drinking water filtration system can only be installed via direct pipe-in connection.
- Standard installation is only applicable within one (1) metre from water inlet and head connector.
- Standard installation does not includes trunking or drilling of cement wall.
- Standard installation does not cover/provide/include non-standard parts like water tap, washer splitter and copper pipe that may be required.
- Standard installation is not applicable for marble table top due to limitation.

- Unit should be placed in a cool shade and dry area with proper ventilation.
- Unit should not be placed under direct sunlight or near any heat ventilation.

## STANDARD INSTALLATION PROCEDURE

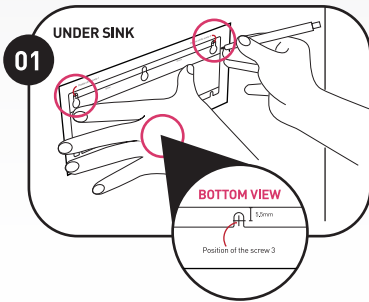


### STEP 01

Measure a suitable source water inlet and filtered water outlet hose length and use a cutter to trim the water hose to length. Follow the water flow direction indicator on the filter head connector and insert the water hose into the respective source water inlet and filtered water outlet ports. Ensure they are fitted snugly.

- Please take note of the water flow direction indicator on the filter head connector.

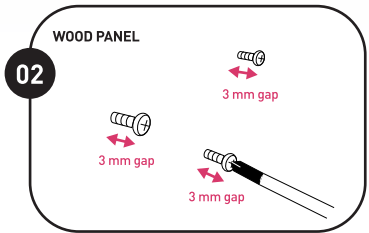
## OPTION A: MOUNTING FILTER HEAD CONNECTOR AGAINST WOOD PANEL



### STEP 01

Place the mounting installation guide on the wood panel and locate a desired position to mount the filter head connector. Proceed to mark out the three (3) points on the wood panel for the screw holes.

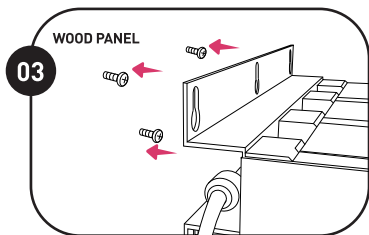
---



### STEP 02

For wood panel mounting, insert the screws into the three (3) marked position with a screwdriver, leaving about three (3) mm of each screw exposed.

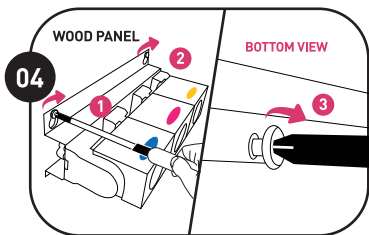
---



### STEP 03

Hang the filter head connector over the three (3) screw heads.

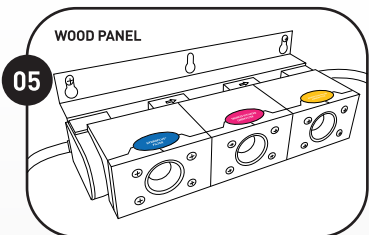
---



### STEP 04

Use a screwdriver to tighten all the three (3) screws in a clockwise direction to secure the filter head connector snugly.

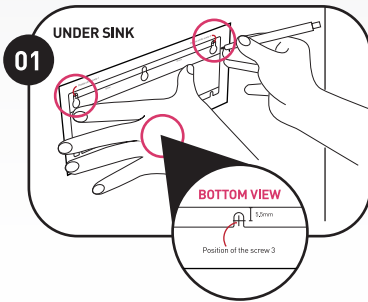
- ⚡ • Ensure the source water inlet and filtered water outlet hose must not be bent under the filter head connector.
- 



### STEP 05

The filter head connector mounting is now completed.

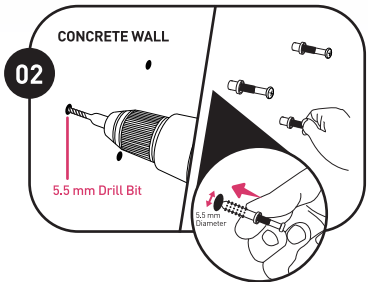
## OPTION B: MOUNTING FILTER HEAD CONNECTOR AGAINST CONCRETE WALL



### STEP 01

Place the mounting installation guide on the concrete wall and locate a desired position to mount the filter head connector. Proceed to mark out the three (3) points on the concrete wall for the screw holes.

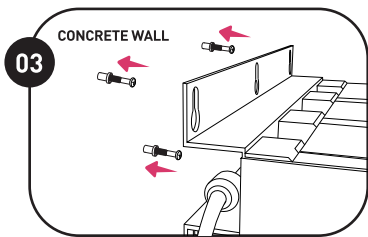
---



### STEP 02

For concrete wall mounting, use a five point five (5.5) mm drill bit to drill three (3) pilot holes, each with thirty-five (35) mm depth on the marked positions to insert the entire screw holder.

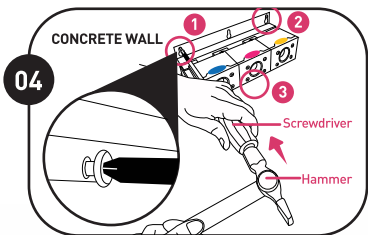
---



### STEP 03

Hang the filter head connector over the three (3) screw heads.

---

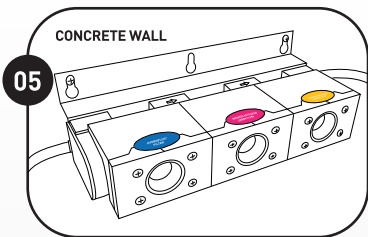


### STEP 04

Place the screwdriver tip on the screw, then use a hammer to hit the screwdriver handle to hammer in the three (3) screws to secure the filter head connector snugly.

⚡ • Ensure the source water inlet and filtered water outlet hose must not be bent under the filter head connector.

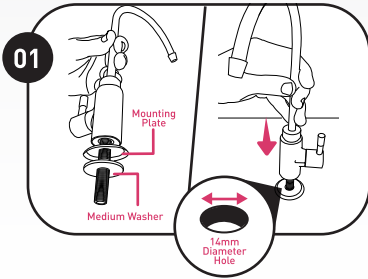
---



### STEP 05

The filter head connector mounting is now completed.

## DRINKING FAUCET INSTALLATION & FILTER SET UP

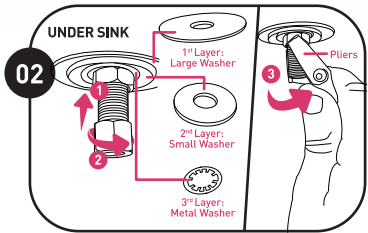


### STEP 01

Locate a desired position (on sink top or on countertop next to the sink) to install the drinking faucet. Ensure there is space underneath for necessary installation. Use a fourteen (14) mm drill bit to drill a hole. Insert the mounting plate and medium-sized washer into the faucet external screw thread and slot the entire faucet external screw thread into the drill hole.

- Not applicable for marble, ceramic, glass and concrete countertop due to limitation.
- Silicon may be used to conceal the remaining hole gap.

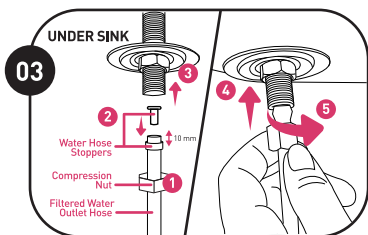
⚡ • To avoid damaging the sink, please consult a qualified plumber or assigned installer for drilling procedure.



### STEP 02

Insert the large, small washer and metal washer through the faucet external screw thread tube underneath the sink/countertop. Proceed to fit the compression nut and tighten it with the adjustable wrench or water pump pliers.

- Check that the drinking faucet is facing in the correct direction.

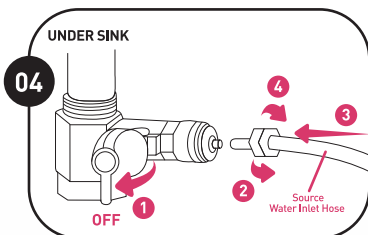


### STEP 03

Slot the compression nut through the filtered water outlet hose, followed by the water hose stoppers and leave a ten (10) mm hose length to insert into the drinking faucet base located underneath the sink/countertop.

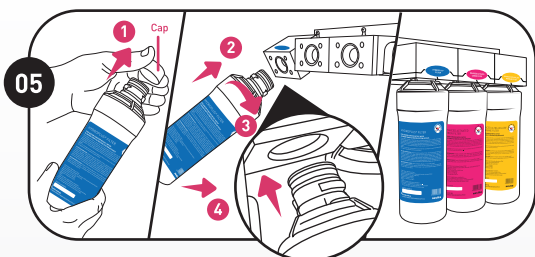
Fit the compression nut and tighten it with the adjustable wrench or water pump pliers. The drinking faucet installation is now completed.

- Ensure the water hose is fitted snugly to prevent water leakage.



### STEP 04

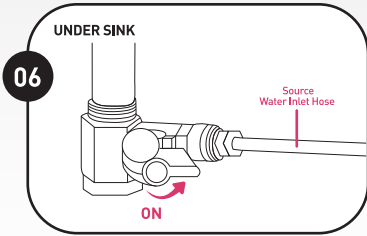
Turn OFF the main water supply and set up the installation by direct connection to the water piping. Remove the compression nut at the side of the water piping diverter, attach the source water inlet hose and tighten nut. Ensure they are fitted snugly. Check to ensure the water piping diverter is at OFF position.



### STEP 05

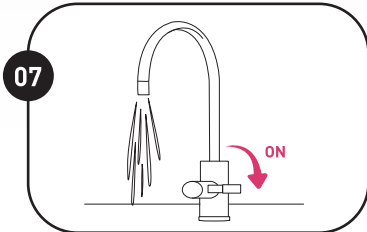
Remove the packaging and filter cap from the HydroPlus®/ HydroPure™ 3-Stage Filtration System. Match the coloured label on the filter and the filter head connector, then proceed to insert the individual filter cartridge into its respective filter head and twist them in a clockwise direction to tighten it. Then push the individual filter cartridge ninety (90) degree downwards. Filter cartridge assembly is completed.

- Please ensure the filter assembling sequence is correct to ensure optimum water purification performance.
- Check to ensure the individual filter cartridge is properly assembled and installed in position to prevent water leakage.



### STEP 06

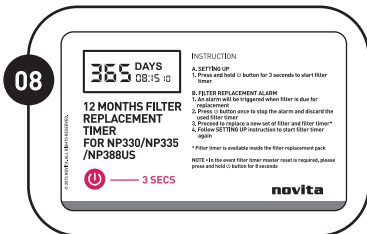
Turn ON the main water supply and water piping diverter. It is recommended to control the water inflow rate to be at about 2,5 Litres/min for optimum performance.




### STEP 07

For optimum water purification results, it is recommended to rinse through the brand-new filters before usage. Prepare a container to dispense and discard the first ten (10) litres of water by turning ON the drinking faucet.

• Water dispensing flow rate vary subjected to the nature of water pressure system.



### STEP 08

Press and hold  button on the filter replacement timer for three (3) seconds to start filter timer. Proceed to paste the filter replacement timer at a visible and accessible area. The under sink drinking water filtration system is now ready for usage.

• An alarm will be trigger when filter is due for replacement. In the event filter replacement timer master reset is required, please press and hold  button for eight (8) seconds.