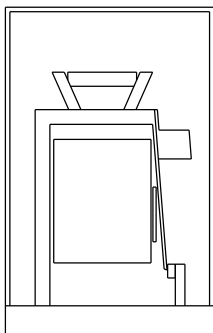


ALL PART#'S 15AMP SPDT



DIMENSIONS

L-1.06" x W-0.82" x H-1.65"

PART#'S

R-0M120-15DP - 120VAC

R-0M240-15DP - 240VAC

R-0M240-15DP - 24VDC

PIN OUT:

PIN-7&8-COIL

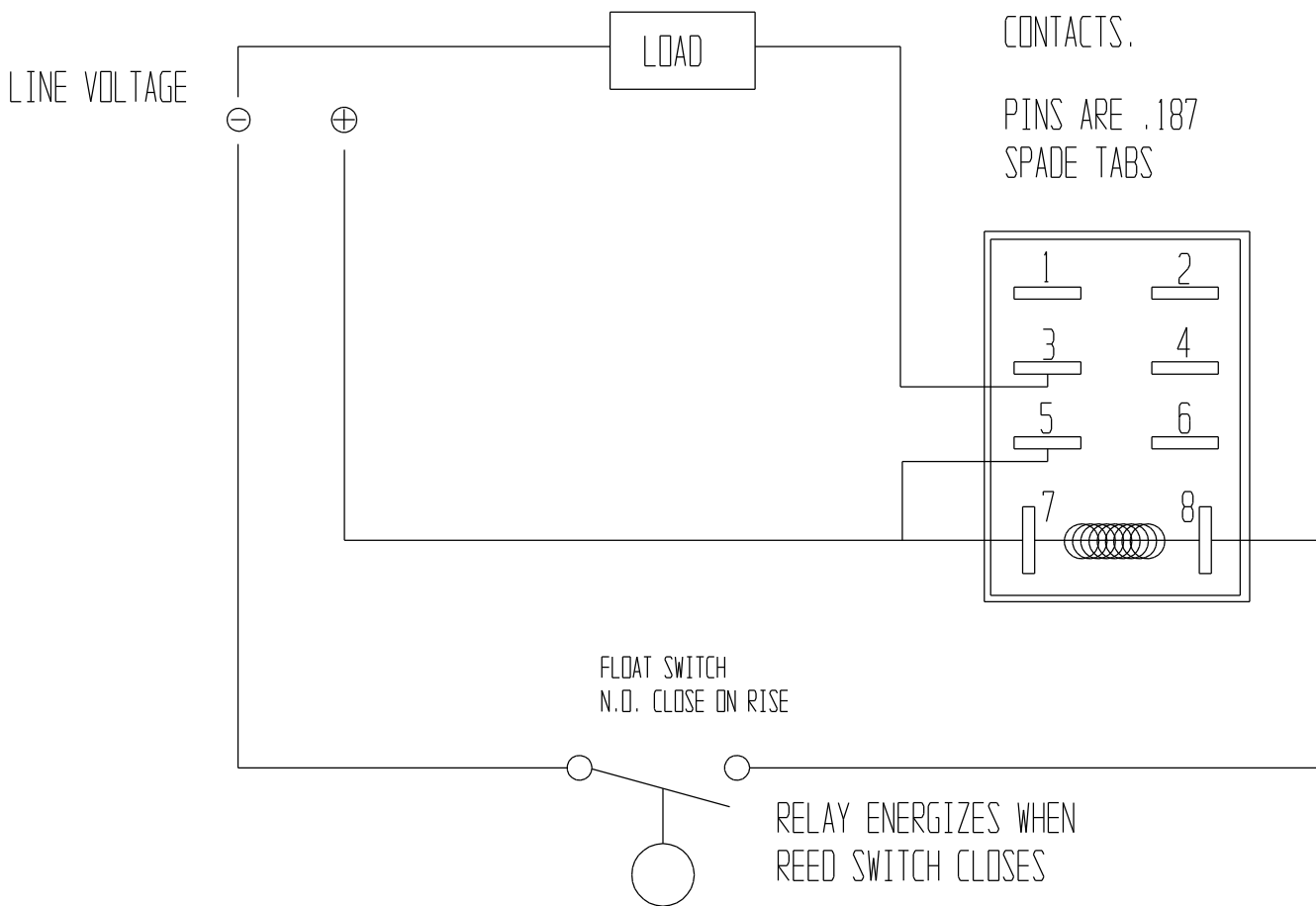
PIN-5&6-COMMON

PIN-3&4-NORMALLY OPEN

PIN-1&2-NORMALLY CLOSED

DIAGRAM SHOWS LOAD WIRED TO COMMON AND NORMALLY OPEN CONTACTS.

PINS ARE .187 SPADE TABS



PLEASE NOTE:

THIS DRAWING AND SPECIFICATION IS THE PROPERTY OF INNOVATIVE COMPONENTS AND IS TO BE USED SOLEY AS A TECHNICAL REFERENCE BY INNOVATIVE COMPONENTS' CUSTOMERS. ANY REPRODUCTION OR DISTRIBUTION TO THE CONTRARY IS PROHIBITED.

	INNOVATIVE COMPONENTS	
	384 OLD TURNPIKE ROAD, P.O. BOX 294 SOUTHINGTON, CT. 06489	
TITLE: RELAY WIRING DIAGRAM		
MODEL: X	DRAWN BY: F.J.K.	
STOCK: R-0Mxxx-15DP	DATE: 03/1/01	
FILENAME: C:\CK7\PR\RELAY\R-KU-120SPDT	SHEET: 1 OF 1	
REV:	SCALE: NONE	