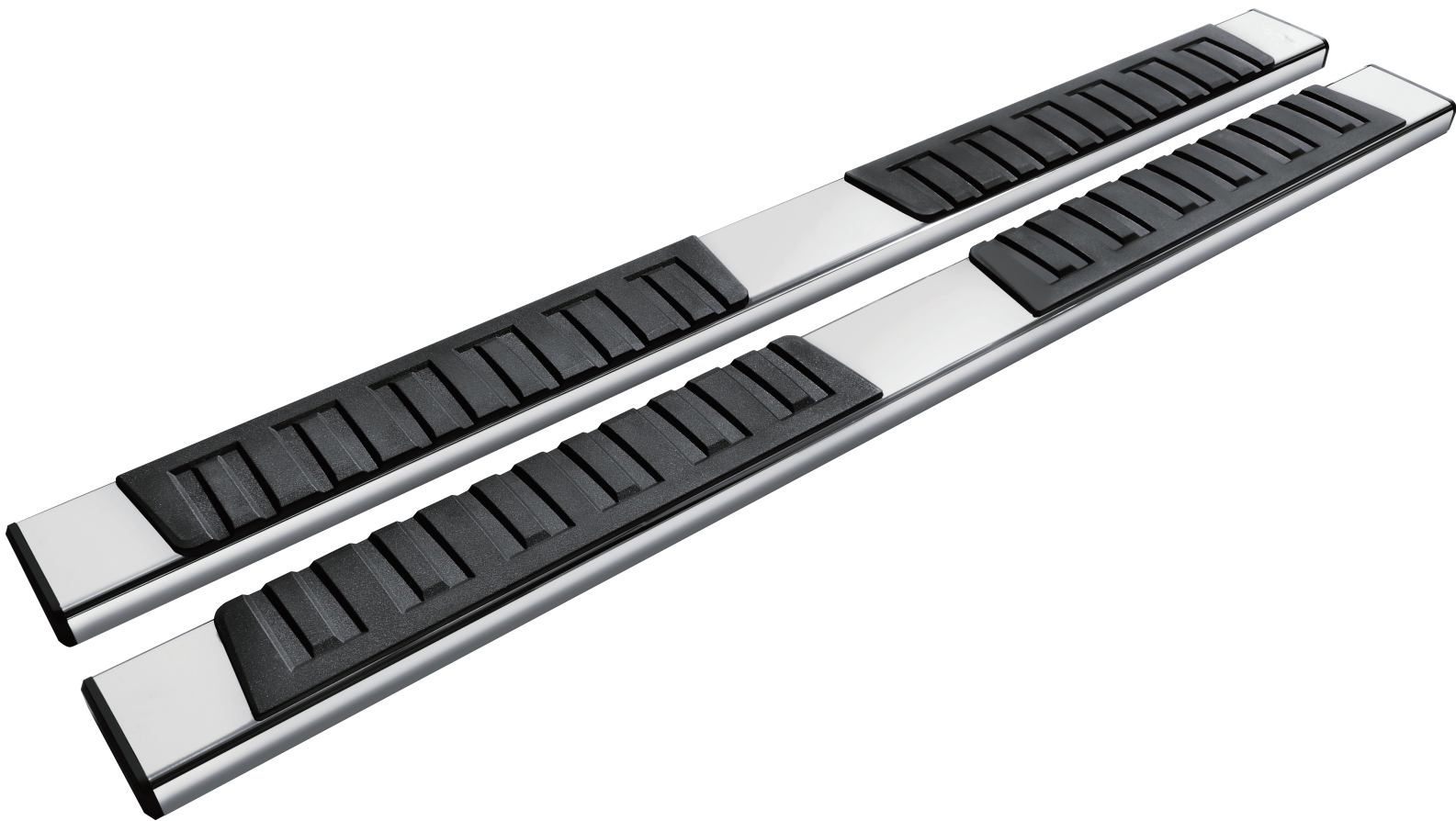


Installation & CARE

YG0801W061 YG0801A061

Tools Required

13mm Socket
Ratchet
Torque Wrench



Notes

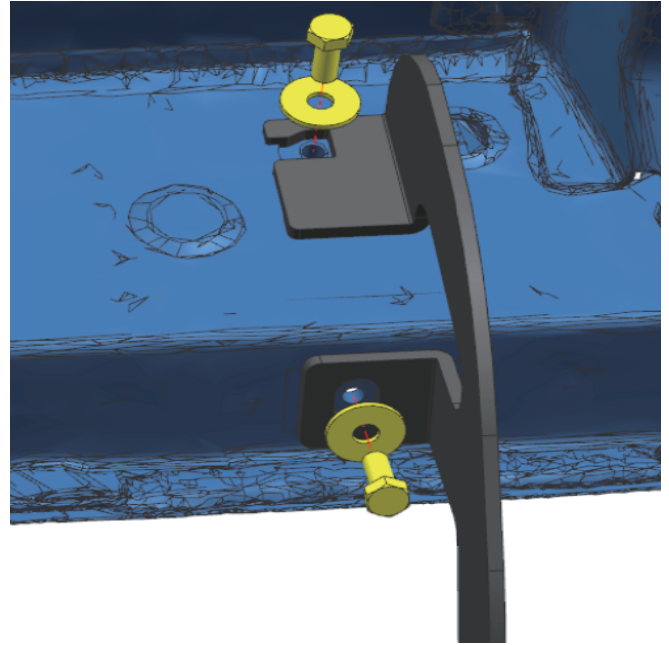
Read this instruction carefully before starting installation.
Proper tools will improve the quality of installation and reduce the time required.
If missing parts or any damage found, please take a picture, and contact us.

Step 1:

1. Locate (3) mounting positions each side.
2. There are 4 mounting positions each side, we will use the 1st, 2nd, 4th.
3. Clean the sealant and dirt around mounting positions.
4. Remove rubber plugs and clean factory threaded inserts.

Step 2:

1. Attach bracket to the rocker panel and secure with (2) M8 hex bolts, (2) M8 flat washers.
2. Repeat to install other brackets, do not fully tighten.



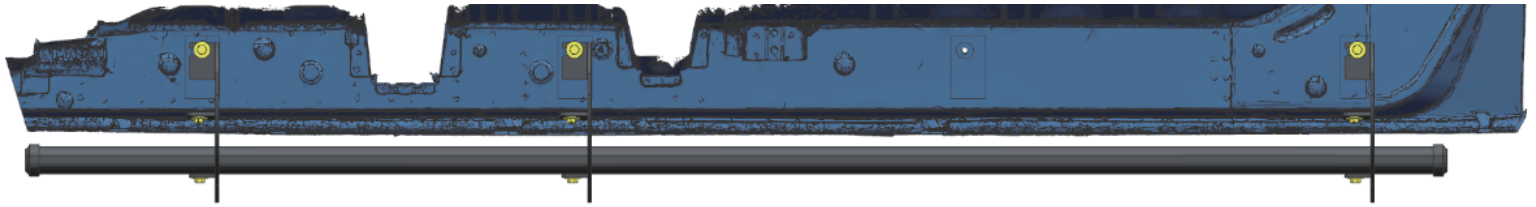
Step 3:

1. Remove (6) M8 hex bolts and (6) M8 flat washers behind the step bar.
2. Slide mounting tracks to proper positions.
3. With assistance, lift and attach the step bar to brackets. Secure the step bar on brackets with (6) M8 hex bolts and (6) M8 flat washers.
4. Repeat to install the other side step bar, do not fully tighten.



Step 4:

1. Tighten M8 hex bolts on vehicle with 15 ft. lbs. torque.
2. Adjust the step bar to level and tighten M8 hex bolts with 15 ft. lbs. torque.
3. After the step bar installed, periodic check to ensure all mounting hardware remains secure and tight.

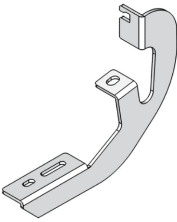
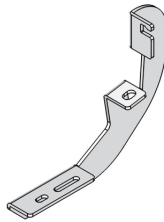
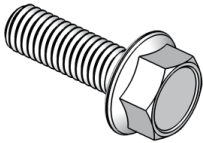
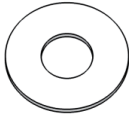
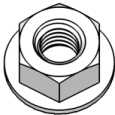
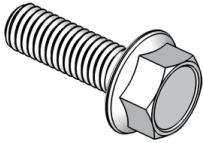
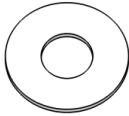


Front



Passenger Right Side

Part List

					
Driver Left Side Bracket	×3	Passenger Right Side Bracket	×3	M8 Hexagon Bolt	×12
					
M8 Flat Washer	×12	M8 Hexagon Nut	×12	M8 Hexagon Bolt (on step bar)	×12
					
M8 Flat Washer (on step bar)	×12				

Installation & CARE