



Installation & CARE

CEETSS-3029

Tools Required

13mm Socket
Ratchet
Torque Wrench

Part List

- ① ×2 Step Bar
- ② ×4 Driver Left Side Bracket
- ③ ×4 Passenger Right Side Bracket
- ④ ×16 M8 Hexagon Bolt
- ⑤ ×32 M8 Flat Washer
- ⑥ ×16 M8 Spring Washer
- ⑦ ×16 M8 Hexagon Nut
- ⑧ ×8 M8 Clip Nut
- ⑨ ×16 M8 Hexagon Bolt (on step bar)
- ⑩ ×16 M8 Flat Washer (on step bar)



②



③



Notes

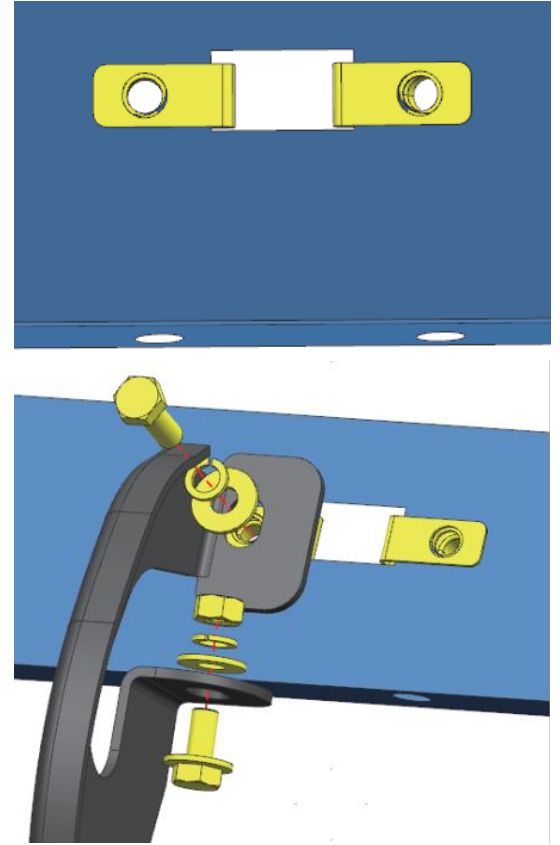
Read this instruction carefully before starting installation.
Proper tools will improve the quality of installation and reduce the time required.
If missing parts or any damage found, please take a picture, and contact us.

Step 1:

1. Locate (2) mounting positions each side.
2. There are 3 mounting positions each side, we will use the 1st and the 3rd.
3. Remove the factory tape and clean the dirt around mounting positions.

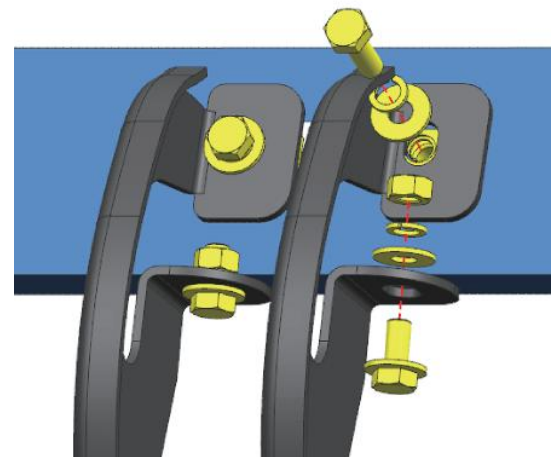
Step 2:

1. Insert M8 clip nuts onto square holes on inner rocker panel.
(Insert M8 clip nut onto the square hole and over the smaller hole next to it).
2. Attach bracket to inner rocker panel (vehicle front side first).
3. Secure the bracket on rocker panel with (1) M8 hex bolt, (1) M8 spring washer, (1) M8 flat washer.
4. Secure the bracket on pinch weld with (1) M8 hex bolt, (1) M8 spring washer, (2) M8 flat washers, (1) M8 hex nut.



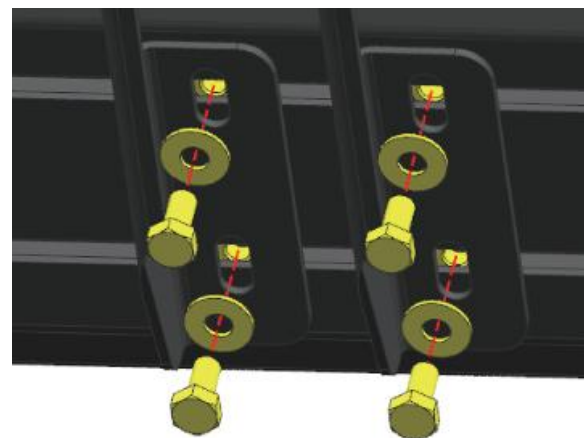
Step 3:

1. In same mounting position, attach another bracket to the mounting hole next to the first bracket.
2. Secure the bracket on rocker panel with (1) M8 hex bolt, (1) M8 spring washer, (1) M8 flat washer.
3. Secure the bracket on pinch weld with (1) M8 hex bolt, (1) M8 spring washer, (2) M8 flat washers, (1) M8 hex nut.
4. Repeat step 2 and step 3 to install remaining brackets.



Step 4:

1. Remove (8) M8 hex bolts and (8) flat washers behind step bar.
2. Slide mounting tracks to proper positions.
3. With assistance, lift and attach the step bar to brackets. Secure the step bar with (8) M8 hex bolts, (8) M8 flat washers.
4. Repeat to install the other side step bar, do not fully tighten.



Step 5:

1. Tighten M8 hex bolts and nuts on vehicle with 15 ft. lbs. torque.
2. Adjust the step bar to level and tighten M8 hex bolts with 15 ft. lbs. torque.
3. After the step bar installed, periodic check to ensure all mounting hardware remains secure and tight.



Contact us

If you have any questions regarding the installation of your AUTOSAVER88® product, just give us a call Monday through Friday from 8:00 AM-5:00 PM Pacific time at 888-717-8084 or email us at: info@autosaver88.com

Steps for reference

- ☆ Log into your My account.
- ☆ Go to My account, select Purchases and find this order.
- ☆ Click on "Contact Seller"

Thank you for selecting AUTOSAVER88 Running Board.
Your new running board are custom molded to fit your specific vehicle.



Installation & CARE