

CARE AND USE INSTRUCTIONS

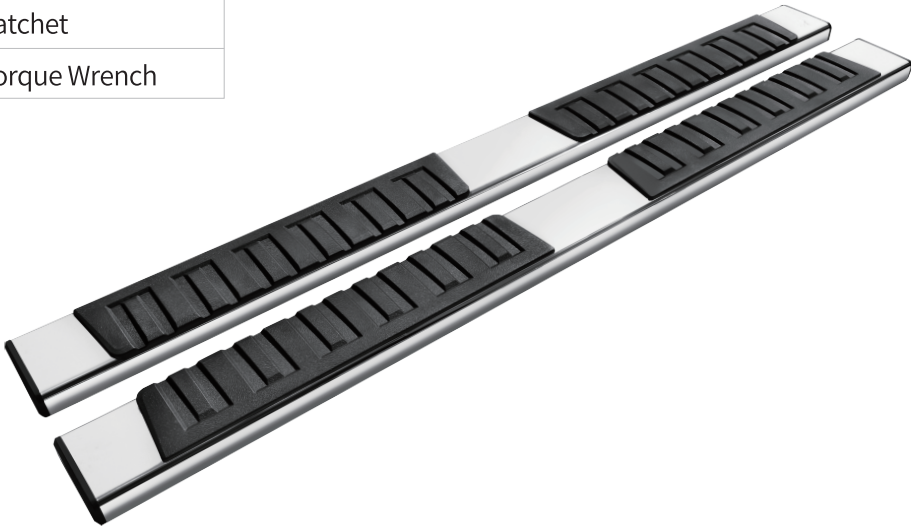
Tools Required

13mm Socket

Ratchet

Torque Wrench

CEETSS-3024 V 1.1



Notes

Read this instruction carefully before starting installation.
09-12 models require self-drilling on pinch weld to install brackets.
Proper tools will improve the quality of installation and reduce the time required.
If missing parts or any damage found, please take a picture, and contact us.

Step 1:

1. Locate three mounting positions each side.
2. Remove the factory tape and clean the sealant and dirt around factory holes on mounting positions.
3. Clean the factory threaded holes if equipped.

CARE AND USE INSTRUCTIONS

Step 2A:

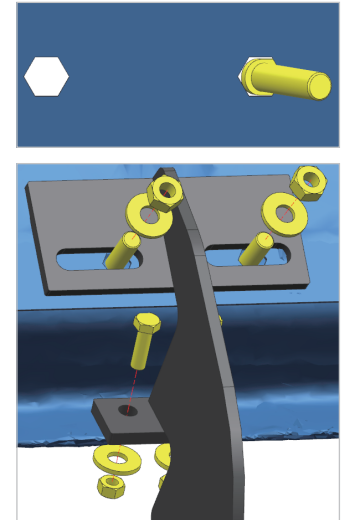
For models w/o factory threaded inserts

1. Insert the (2) M8 bolt plates into factory hexagon holes. Flat plate side in, thread side out.
2. Attach the bracket to threaded end of bolt plate and secure with (2) M8 flat washers and (2) M8 hex nuts.
3. Secure the bracket to pinch weld with (2) M8 hex bolts, (2) M8 flat washers, (2) M8 hex nuts.



Note:

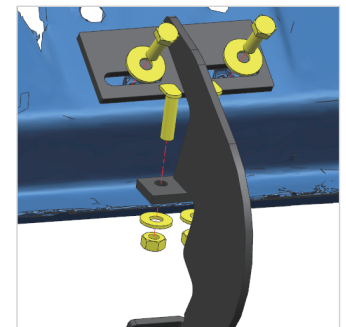
09-12 models require self-drilling on pinch weld.



Step 2B:

For models with factory threaded inserts

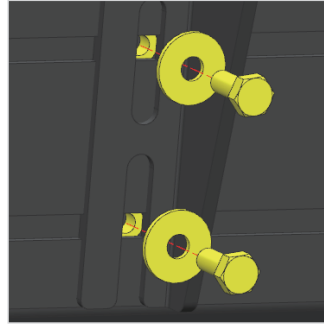
1. Attach the bracket to inner rocker panel and secure with (2) M8 hex bolts, (2) M8 flat washers.
2. Secure the bracket to pinch weld with (2) M8 bolt plates, (2) M8 flat washers, (2) M8 hex nuts.



CARE AND USE INSTRUCTIONS

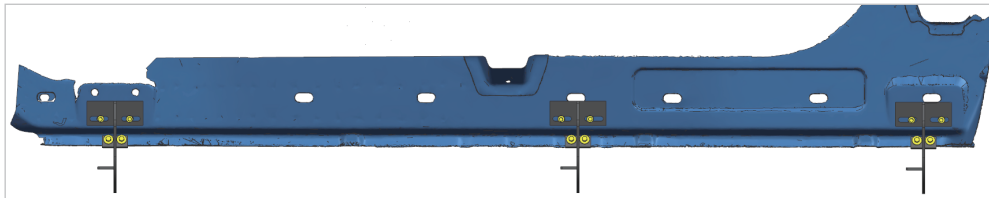
Step 3:

1. Remove (6) M8 hex bolts and (6) M8 flat washers behind the step bar.
2. Slide mounting track to proper positions.
3. With assistance, lift and attach the step bar to brackets. Secure the step bar on brackets with (6) M8 hex bolts and (6) M8 flat washers.
4. Repeat to install the other side step bar, do not fully tighten.



Step 4:

1. Tighten M8 hex bolts and nuts on vehicle with 15 ft. lbs. torque.
2. Adjust the step bar to level and tighten M8 hex bolts with 15 ft. lbs. torque.
3. After the step bar installed, periodic check to ensure all mounting hardware remains secure and tight.



Front

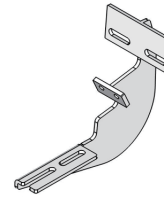


Passenger Right Side

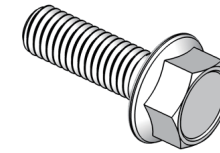
CARE AND USE INSTRUCTIONS

Part List:

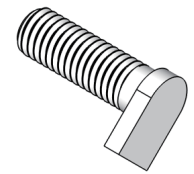
	Qty.	Description
①	×6	Mounting Bracket
②	×12	M8 Hexagon Bolt
③	×12	M8 Bolt Plate
④	×24	M8 Flat Washer
⑤	×24	M8 Hexagon Nut
⑥	×12	M8 Hexagon Bolt (On Step Bar)
⑦	×12	M8 Flat Washer (On Step Bar)



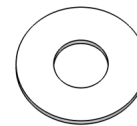
①



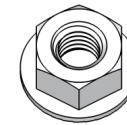
②



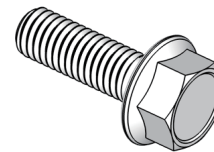
③



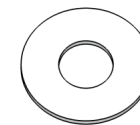
④



⑤



⑥



⑦