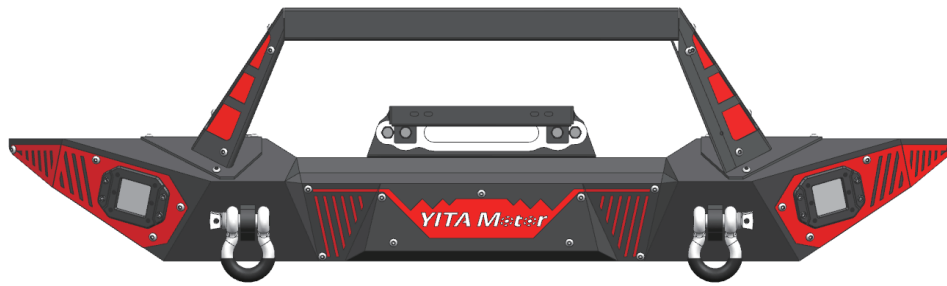


### Tools Required

- 19mm, 16mm Socket
- 19mm, 16mm, 10 mm Wrench
- 4mm Hex Bit
- Ratchet
- Torque Wrench

### CEETBX-0061



### Notes

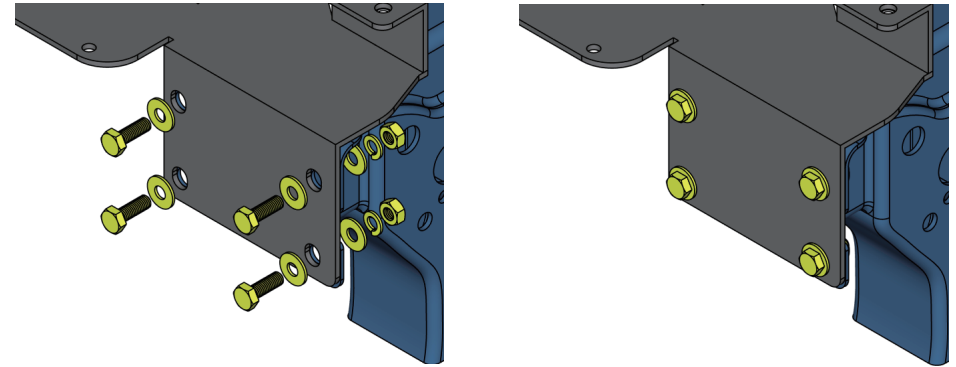
- Read this instruction carefully before starting installation.
- Proper tools will improve the quality of installation and reduce the time required.
- Bull bar fit for 16"-20" side mount LED light bar.
- The red trim panel can be removed for customized painting.
- If missing parts or any damage found, please take a picture and contact us.

### Step 1:

1. Remove (4) rivets holding the splash guard and remove the splash guard.
2. Remove (2) rivets securing the frame cover between the grille and front bumper.
3. Disconnect fog lamp connectors.
4. Remove (8) M12 hex nuts holding the bumper onto the frame rail.
5. Carefully remove the front bumper.

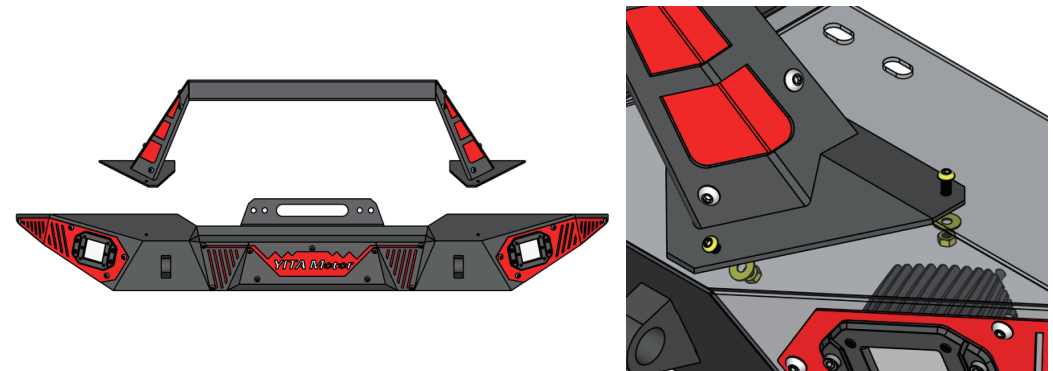
### Step 2:

1. Take the subframe panel and place it onto frame rail.
2. Secure subframe panel using (8) M10 hex bolts, (8) M10 flat washers, (8) M10 lock washers, (8) M10 hex nuts.
3. Tighten M10 hardware with 31 ft. lbs. torque.



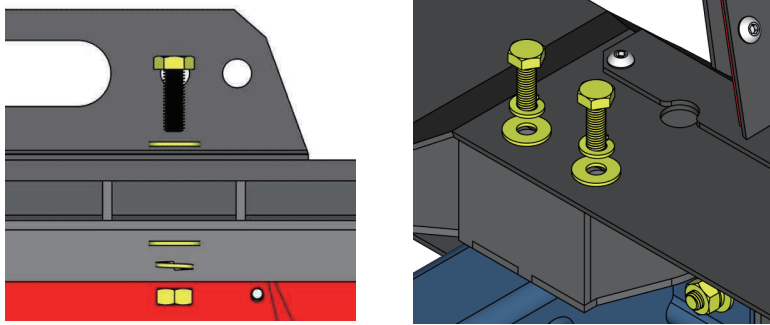
### Step 3:

1. Position the bull bar to the front bumper.
2. Secure the bull bar using (6) M6 button bolts, (6) M6 flat washers, (6) M6 lock washers, (6) M6 hex nuts.
3. Tighten M6 hardware with 8 ft. lbs. torque.



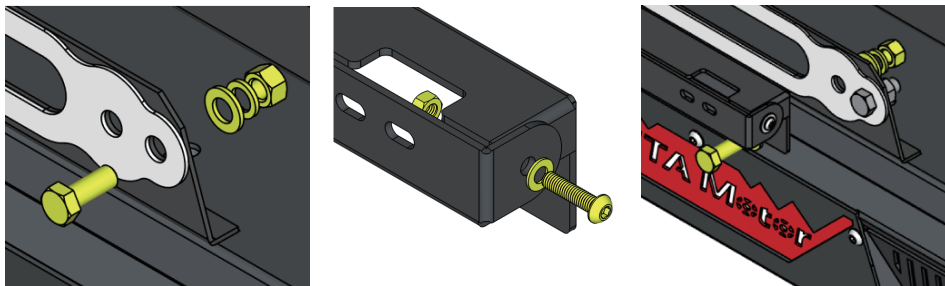
## Step 4:

1. With assistance, lift and attach the bumper to subframe.
2. Secure the bumper onto subframe using (8) M10 hex bolts, (12) M10 flat washers, (8) M10 lock washers, (4) M10 hex nuts.
3. Tighten M10 hardware with 31 ft. lbs. torque.


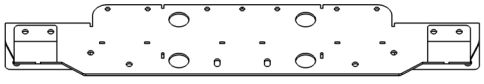
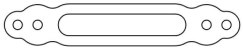
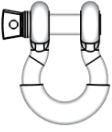

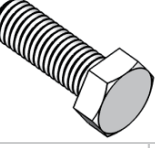
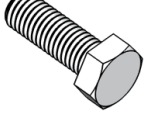

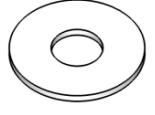
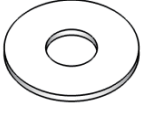






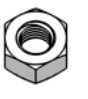
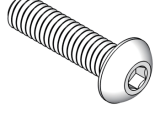




## Step 5:

1. Secure fairwire panel onto bumper using (2) M12 hex bolts, (2) M12 flat washers, (2) M12 lock washers, (2) M12 hex nuts.
2. Assemble the license plate bracket with (2) M6 button head bolts, (2) M6 flat washers, (2) M6 hex nuts.
3. Secure license plate bracket onto bumper using (2) M12 hex bolts, (2) M12 flat washers, (2) M12 lock washers, (2) M12 hex nuts.
4. Install (2) D-rings to shackle mounting brackets.
5. Install LED light bar to the bull bar, fit for 16-20" side mount light bar.



## Part List:

			
Bull Bar		Subframe	
×1		×1	
			
Fairlead Panel	D-Ring Shackle	License Plate Bracket	M12×30 Hexagon Bolt
×1	×2	×1	×4
			
M10×30 Hexagon Bolt	M6×20 Button Head Bolt	M12 Flat Washer	M10 Flat Washer
×16	×6	×4	×28
			
M6 Flat Washer	M12 Lock Washer	M10 Lock Washer	M6 Lock Washer
×6	×4	×16	×6
			
M12 Hexagon Nut	M10 Hexagon Nut	M6 Hexagon Nut	
×4	×12	×6	
			License Plate Hardware
M6 Button Head Bolt	M6 Flat Washer	M6 Hexagon Nut	
×2	×2	×2	