

**Contact us:**

ITEM NO.:YA-004



**:service@yitamotor.com**

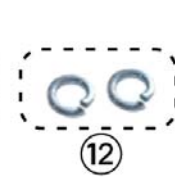
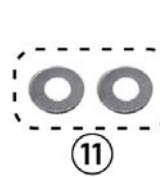
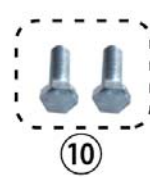
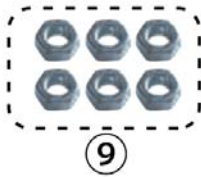
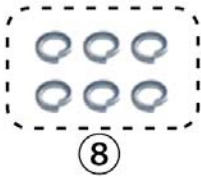
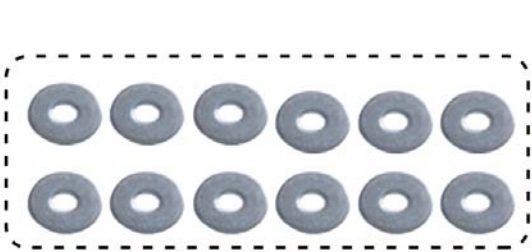
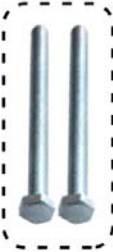
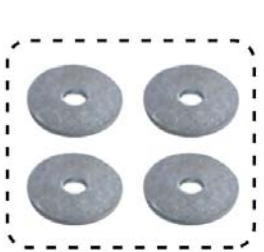
# BULL BAR FOR TACOMA 05-15

## **ATTENTION :**

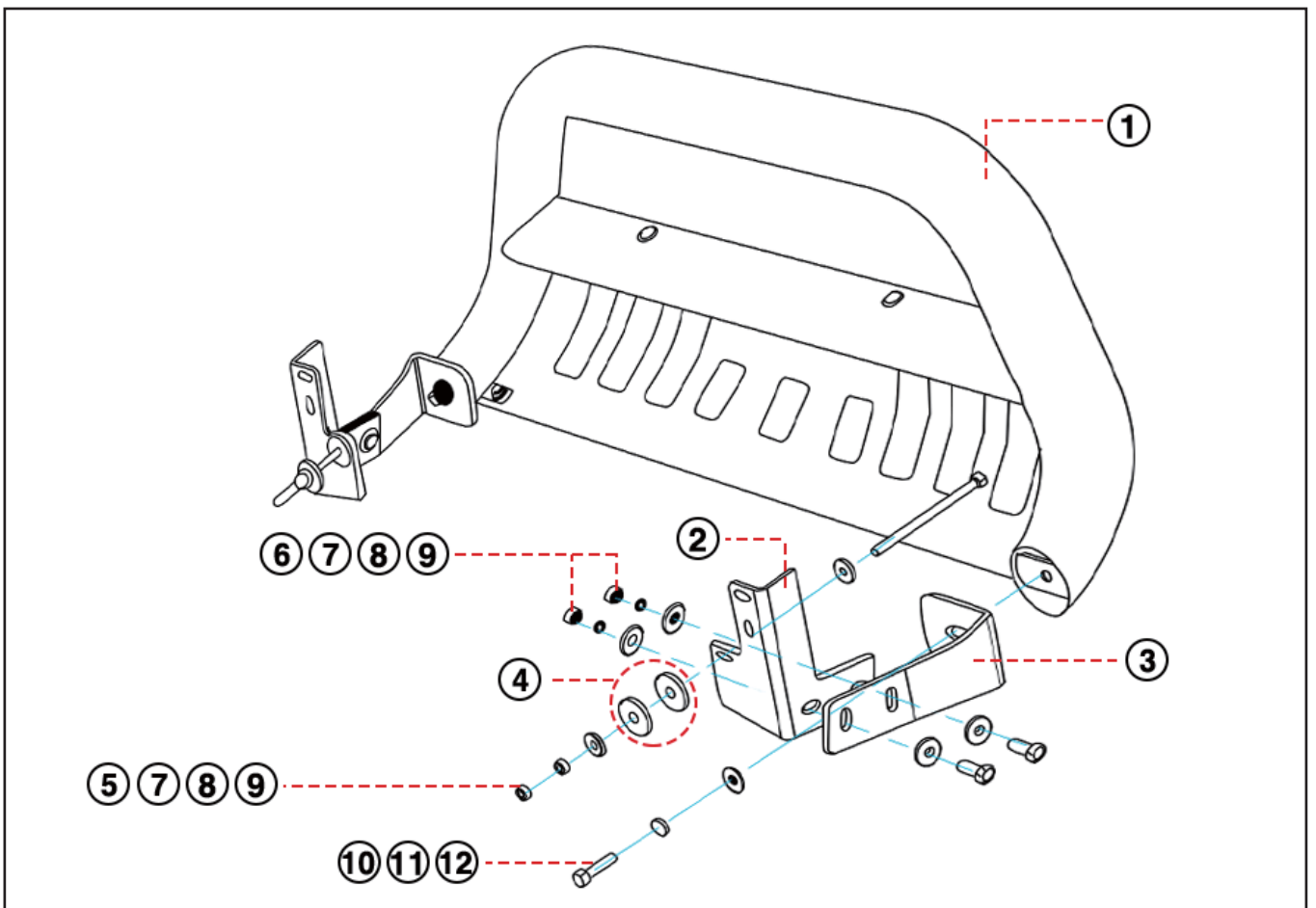
- Please read this installation manual before installing this part. Protect your car properly in the event of any scratches.
- After installation, you may need to re-tighten all hardware periodically to ensure safety.
- The installation pictures are only for your reference. There may be some differences between the image and the actual part, but it does not affect the installation.



# PARTS LIST :



① Bull Bar	1pc	⑦ M10*30*3.0 Large Washer	12pcs
② Bracket 1	2pcs	⑧ M10 Spring Washer	6pcs
③ Bracket 2	2pcs	⑨ M10 Hexagon Nut	6pcs
④ Thicken Washer	4pcs	⑩ M12*40 Hexagon Bolt	2pcs
⑤ M10*120 Hexagon Bolt	2pcs	⑪ M12*30*2.5 Large Washer	2pcs
⑥ M10*3 Hexagon Bolt	4pcs	⑫ M12 Spring Washer	2pcs



## STEP 1

Remove the 2 X M14 nuts of the original car with a wrench. (As shown in Figure 1)



## STEP 2

Install bracket 1 with the original car bolts and nuts. Do not tighten at this time. (As shown in Figure 2)



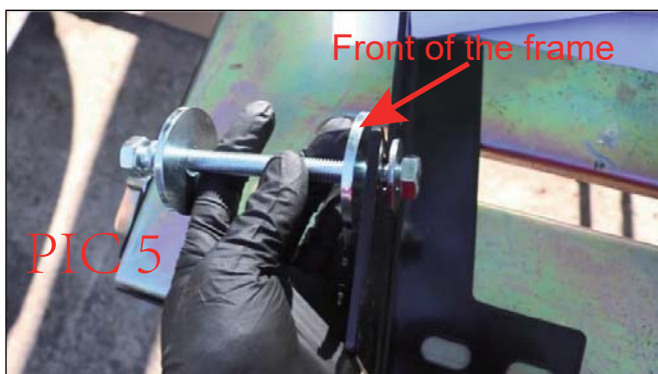
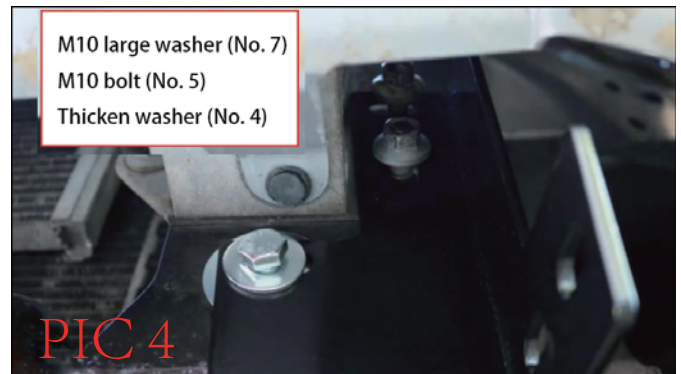
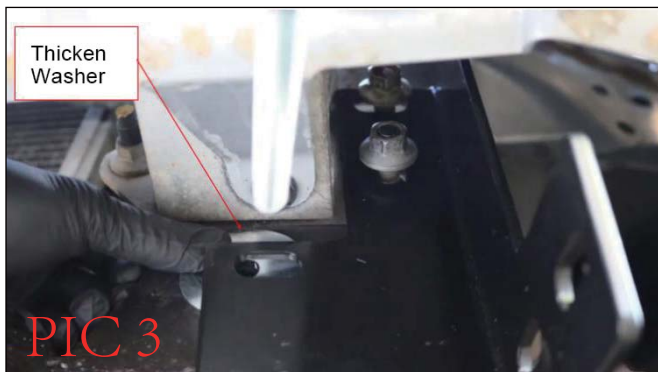


### STEP 3

Mounting the bracket 1 to the car frame.

There is no difference for mounting left and right bracket.

- 1) Insert the M10 large washer (No. 7) into the M10 bolt (No. 5), and put the thicken washer (No. 4) between the body beam and the bracket 1.
- 2) Insert the bolt into the bracket 1 and the car girders, use the thicken washer (No. 4), M10 large washer (No. 7), M10 spring washer (No. 8) and M10 nut (No. 9) in turn. (as shown in Figure 3, Figure 4, Figure 5, Figure 6)
- 3) Tighten the nut when lining up well.



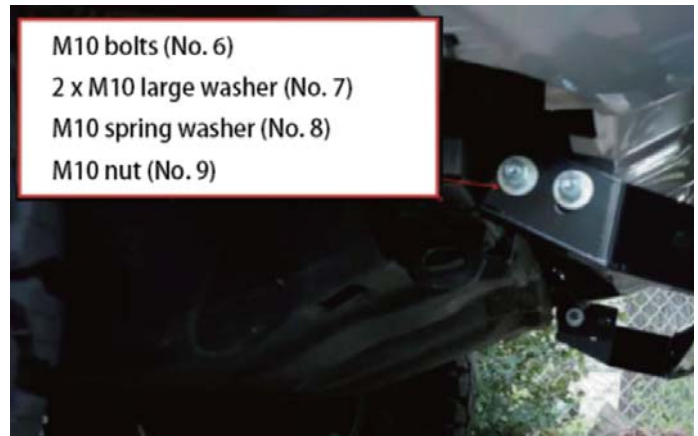
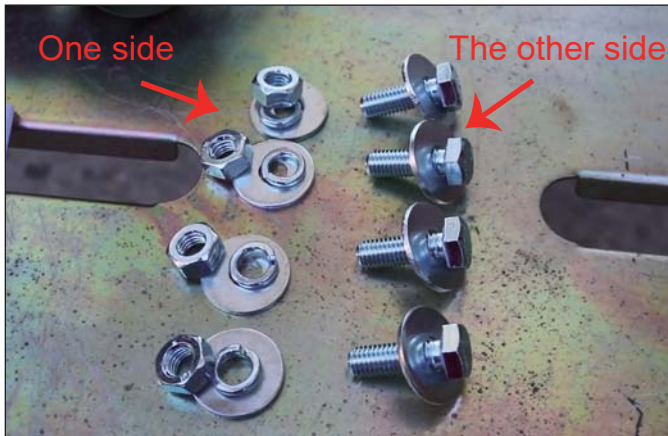
### STEP 4

Connect the bracket 2 to the bull bar via M12 bolt(No. 10),M12 spring washer (No. 11),M12 large washer(No. 12) in turn.



## STEP 5

Connect the two kinds of brackets. There are four groups of mounting hardware for connecting the Bracket 1 and Bracket 2 as shown. Use the M10 bolts (No. 6), 2 x M10 large washer (No. 7), M10 spring washer (No. 8) and M10 nut (No. 9) in turn for each mounting hole.



## STEP 6

Tighten all the bolts, the installation is complete. If you have any problems on installation, Please go back to our product link, there is a step by step installation video to help you out.



## **If you get in trouble regarding:**

- 1.Product and hardware didn't fit your car
- 2.Missed required mounting hardware
- 3.Received a damaged product
- 4.Received a wrong product

## **Contact us:**



**:service@yitamotor.com**