



 KNIT | SKILL LEVEL: **INTERMEDIATE**

ABBREVIATIONS

Alt = Alternate(ing)

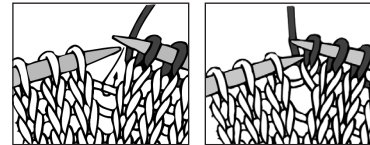
Approx = Approximate(ly)

Inc = Inceas(e)(es)(ing)

K = Knit

K2tog = Knit next 2 stitches together

M1 = Make 1 stitch by picking up horizontal loop lying before next stitch and knitting into back of loop



P = Purl

P2sso = Pass 2 slipped stitches over

Pat = Pattern

Rep = Repeat

RS = Right side

SI2K = Slip next 2 stitches knitwise

SM = Slip marker

Ssk = Slip next 2 stitches knitwise one at a time. Pass them back onto left-hand needle, then knit through back loops together.

St(s) = Stitch(es)

WS = Wrong side

Yo = Yarn over

MEASUREMENTS

Approx 45" [114.5 cm] wide x 26" [66 cm] deep.

GAUGE

22 sts and 30 rows = 4" [10 cm] in stocking st.

INSTRUCTIONS

Cast on 7 sts.

1st row: (RS). K3. yo. K1. yo. K3. 9 sts.

2nd row: K3. Purl to last 3 sts. K3.

3rd row: K3. yo. K1. yo. Place marker before next st. K1. yo. K1. yo. K3. 13 sts.

4th row: As 2nd row.

5th row: K3. yo. Knit to marker. yo. K1. yo. Knit to last 3 sts. yo. K3.

6th row: As 2nd row.

Rep 5th and 6th rows, inc 4 sts on next and every following alt row until there are 125 sts, ending on a WS row.

MATERIALS

Patons® Grace™ (1.75 oz/50 g; 136 yds/125 m)
Ginger (62027) **5 balls**

Size U.S. 6 (4 mm) circular knitting needle 36" [91.5 cm] long **or size needed to obtain gauge.** Stitch marker.

Note: Move marker every row, noting marker is placed on needle before center st.

Proceed in Lace Pat (see chart on page 3):

1st row: K3. yo. K2tog. K2. yo. *K1. yo. K2. ssk. P1. K2tog. K2. yo.* Rep from * to * until 5 sts before marker. K1. yo. K2. ssk. yo. SM. K1. yo. K2tog. K2. yo. Rep from * to * until last 8 sts. K1. yo. K2. ssk. yo. K3. 129 sts.

2nd and alt rows: K3. Knit all knit sts and purl all purl and yo as they appear to last 3 sts. K3.

3rd row: K3. yo. P1. K2tog. K1. yo. K3. *yo. K1. ssk. P1. K2tog. K1. yo. K3.* Rep from * to * until 4 sts before marker. yo. K1. ssk. P1. yo. SM. K1. yo. P1. K2tog. K1. yo. K3. Rep from * to * until last 7 sts. yo. K1. ssk. P1. yo. K3. 133 sts.

5th row: K3. yo. K1. *P1. K2tog. yo. K5. yo. ssk.* Rep from * to * until 2 sts before marker. P1. K1. yo. SM. K1. yo. K1. Rep from * to * until last 5 sts. P1. K1. yo. K3. 137 sts.

7th row: K3. *yo. K2. P1. K2. yo. ssk. K1. K2tog.* Rep from * to * until 5 sts before marker. yo. K2. P1. K2. yo. SM. K1. Rep from * to

* until last 8 sts. yo. K2. P1. K2. yo. K3. 141 sts.

9th row: K3. *yo. K3. P1. K3. yo. Sl2K. K1. p2sso.* Rep from * to * until 7 sts before marker. yo. K3. P1. K3. yo. SM. K1. Rep from * to * until last 10 sts. yo. K3. P1. K3. yo. K3. 145 sts.

10th row: As 2nd row. Rep 1st to 10th rows 9 times more. 325 sts.

Proceed in Border Pat as follows:

1st and 2nd rows: As 1st and 2nd rows of Lace Pat. 329 sts.

3rd row: K3. yo. K1. *K2tog. K1. yo. K3. yo. K1. ssk. P1.* Rep from * to * until 10 sts before marker. K2tog. K1. yo. K3. yo. K1. ssk. K1. yo. SM. K1. yo. K1. Rep from * to * until last 13 sts. K2tog. K1. yo. K3. yo. K1. ssk. K1. yo. K3. 333 sts.

4th row: As 2nd row.

5th row: K3. yo. K2. *K2tog. yo. K5. yo. ssk. P1.* Rep from * to * until 11 sts before marker. K2tog. yo. K5. yo. ssk. K2. yo. SM. K1. yo. K2. Rep from * to * until last 14 sts. K2tog. yo. K5. yo. ssk. K2. yo. K3. 337 sts.

6th and alt rows: K3. Purl to last 3 sts. K3.

7th row: K3. yo. K2. ssk. *yo. K7. yo. Sl2K. K1. p2sso.* Rep from * to * until 13 sts before marker. yo. K7. yo. K2. K2tog. K2. yo. SM. K1. yo. K2. ssk. Rep from * to * until last 14 sts. yo. K7. yo. K2tog. K2. yo. K3. 341 sts.

9th row: K3. yo. K3. ssk. *yo. K3. M1. K1. M1. K3. yo. Sl2K. K1. p2sso.* Rep from * to * until 13 sts before marker. yo. K3. M1. K1. M1. K3. yo. K1. K2tog. K3. yo. SM. K1. yo. K3. ssk. Rep from * to * until last 15 sts. yo. K3. M1. K1. M1. K3. yo. K2tog. K3. yo. K3. 415 sts.

11th row: K3. yo. K4. ssk. *yo. K4. M1. K1. M1. K4. yo. Sl2K. K1. p2sso.* Rep from * to * until 15 sts before marker. yo. K4. M1. K1. M1. K4. yo. K2tog. K4. yo. SM. K1. yo. K4. ssk. Rep from * to * until last 18 sts. yo. K4. M1. K1. M1. K4. yo. K2tog. K4. yo. K3. 483 sts.

Cast off loosely knitwise (WS).



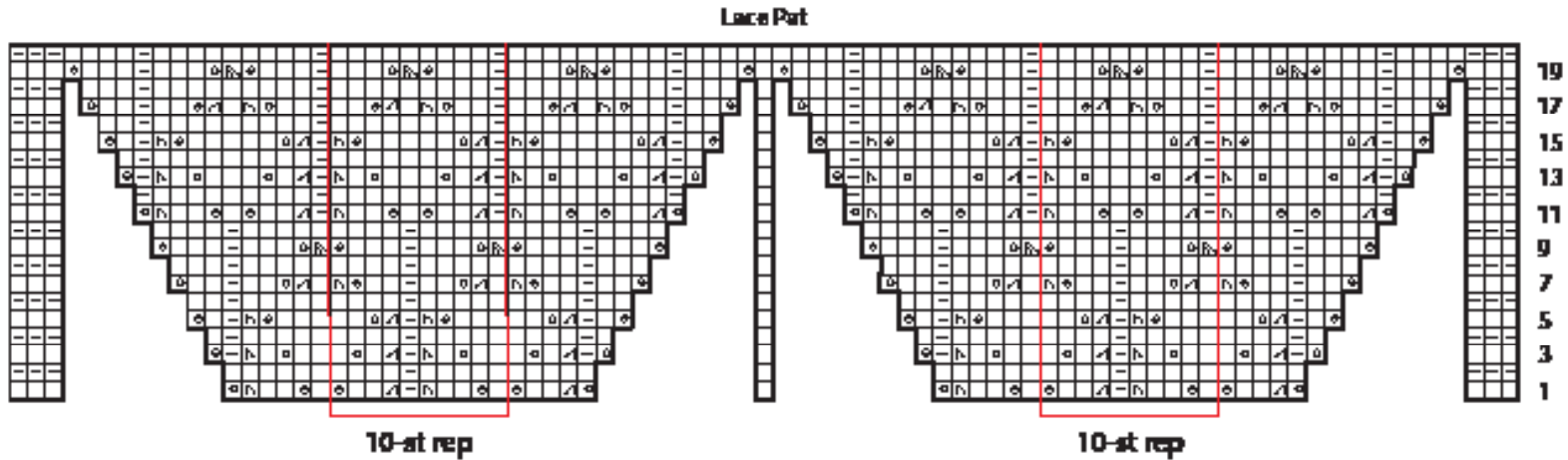
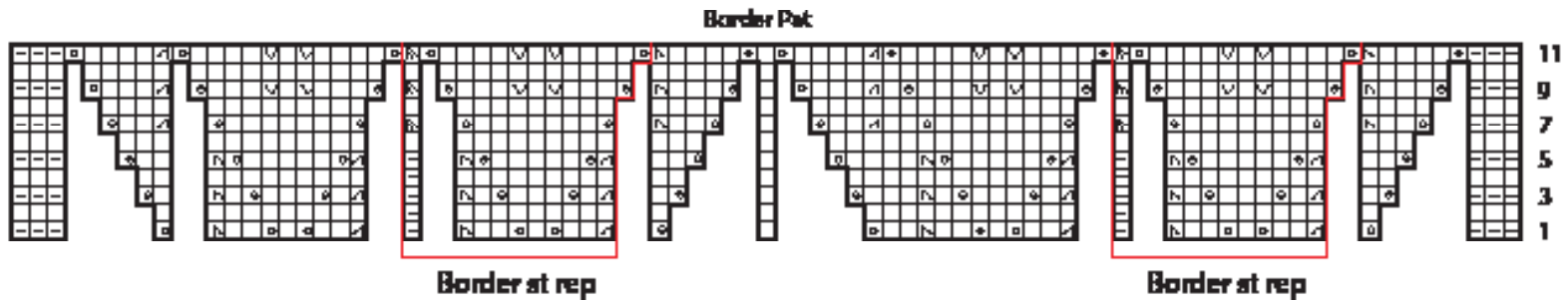


Chart illustrates repeat of 1st to 10th rows twice for clarity.



Key

- ☐ = Knit on RS; Purl on WS
- ◻ = Purl on RS; Knit on WS.
- ◻ = Yo
- ◻ = sk
- ◻ = K2tog
- ◻ = S2k, K1, p2tog.