



MATERIALS

Patons® Alpaca Blend™ (3.5 oz/100 g; 155 yds/142 m)

Contrast A Oats (01003) **3 balls**

Contrast B Sable (01004) **4 balls**

Contrast C Butternut (01023) **2 balls**

Size U.S. 10 (6 mm) circular knitting needle 24" [61 cm] long **or size needed to obtain gauge.** Yarn bobbins (optional).



KNIT | SKILL LEVEL: **INTERMEDIATE**

ABBREVIATIONS

Approx = Approximately

Cont = Continue

K = Knit

K2tog = Knit next 2 stitches together

Kfb = Increase 1 stitch by knitting into front and back of next stitch

P = Purl

Rem = Remain(ing)

Rep = Repeat

RS = Right side

St(s) = Stitch(es)

WS = Wrong side

MEASUREMENTS

Approx 24" x 60" [61 x 152.5 cm].

GAUGE

15 sts and 20 rows = 4" [10 cm] in stocking st.

INSTRUCTIONS

Note: Work chart in Intarsia Technique. When working from chart, wind small balls of the colors to be used, one for each separate area of color in the design. When changing colors, twist the 2 colors around each other where they meet, on WS, to avoid a hole.

I-Cord cast on:

With C, cast on 4 sts.

1st row: Knit.

Slip 4 sts just knit back onto left-hand needle.

2nd row: Kfb. Knit to end of row. Slip last 4 sts just knit back onto left-hand needle. (1 st made).

Rep last row until there are 98 sts.

Next row: (RS). Slip last 3 sts just knit back onto left-hand needle. K2tog. K1. Slip last 2 sts back onto left-hand needle. K2tog. 96 sts. Break yarn. **Do not** turn work.

Place Chart as follows: Chart is shown on page 2.

1st row: (RS). With C, K3. Knit 1st row of chart across next 90 sts, *reading row from right to left*. Slip last 3 sts purl-wise.

2nd row: With C, P3 slipped sts, pulling yarn tightly across front of work when purling first st. Purl 2nd row of chart across next 90 sts, *reading row from left to right*. Slip last 3 sts purl-wise with yarn in front.



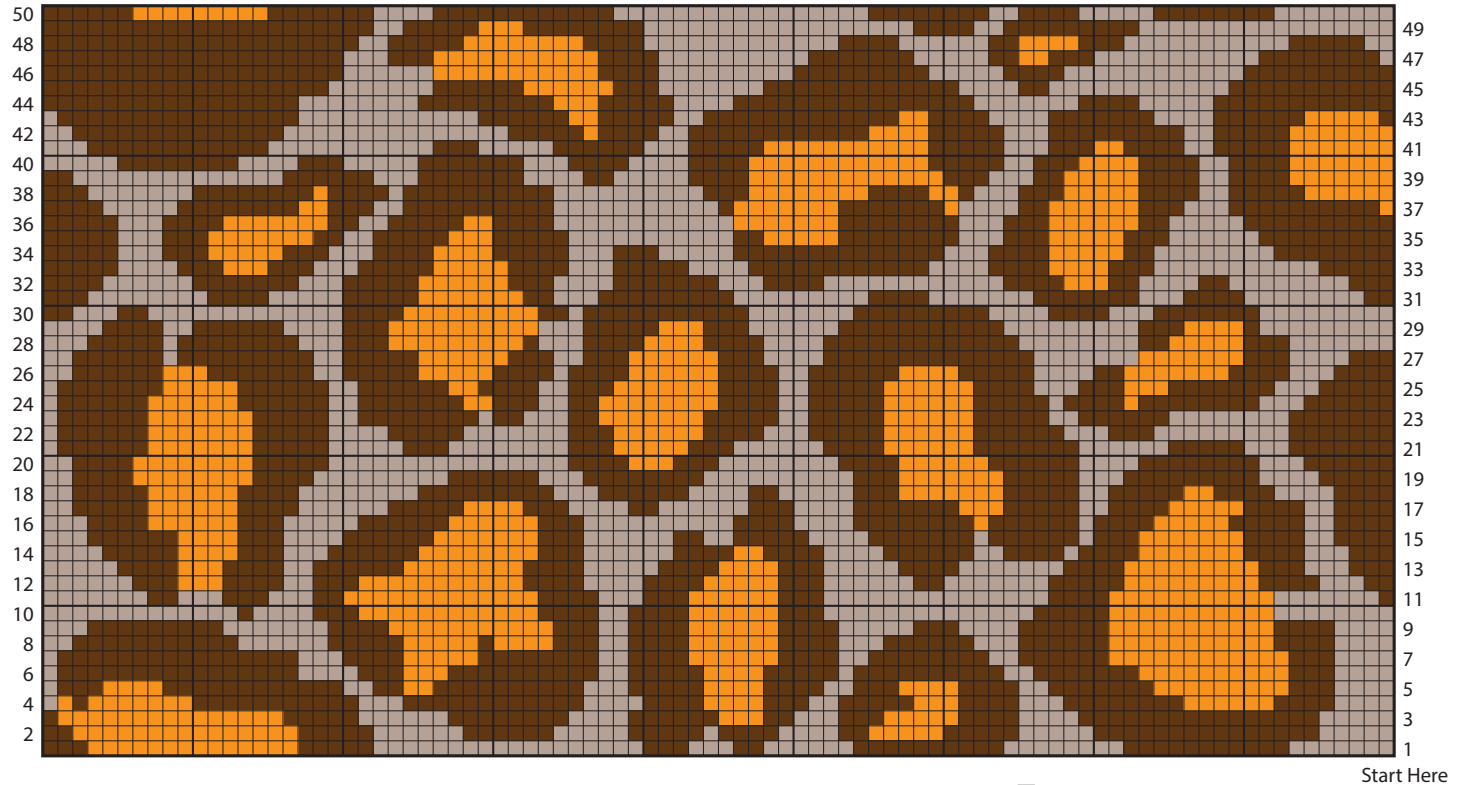
3rd row: With C, K3 slipped sts, pulling yarn tightly across back of work when knitting first st. Knit 3rd row of Chart across next 90 sts, *reading row from right to left*. Slip last 3 sts purl-wise with yarn in back.

4th row: With C, P3 slipped sts, pulling yarn tightly across front of work when purling first st. Purl 4th row of chart across next 90 sts, *reading row from left to right*. Slip last 3 sts purl-wise with yarn in front.

Cont as established, working first and last 3 sts in C and working Chart in stocking st until rows 1 to 50 of Chart have been repeated 6 times.

Break A and B.

I-Cord cast off: With C, cast on 3 sts onto end of left-hand needle. *K2. K2tog. Slip last 3 sts back onto left-hand needle. Rep from * until 3 sts rem. K2tog. K1. Slip last 2 sts onto end of left-hand needle. K2tog. Fasten off.



- Contrast A
- Contrast B
- Contrast C

