



 CROCHET | SKILL LEVEL: EASY

MEASUREMENT

Approx 13" [33 cm] high.

GAUGE

15 sc and 16 rows = 4" [10 cm].



MATERIALS

Caron® Simply Soft™ (6 oz/170.1 g; 315 yds/288 m)

Note: Any chosen Letter or Number requires 2 balls.

Letters and Numbers shown

Letter A Pumpkin (39765)	2 balls
Letter B Royal Blue (39767)	2 balls
Letter C Cool Green (39770)	2 balls
Number 1 Purple (39781)	2 balls
Number 2 Gold (39782)	2 balls
Number 3 Fuchsia (39764)	2 balls
Joy Pillows Harvest Red (39763)	6 balls
Family Pillows Pumpkin (39765)	12 balls

Size U.S. F/5 (3.75 mm) crochet hook **or size needed to obtain gauge.** Stuffing.

ABBREVIATIONS:

Alt = Alternate(ing)
Approx = Approximate(ly)
Beg = Begin(ning)
Ch = Chain(s)
Cont = Continue

Sc2tog = Draw up a loop in each of next 2 stitches. Yoh and draw through all loops on hook
Rem = Remain(ing)

Rep = Repeat
Rnd = Round
RS = Right side
Sc = Single crochet
Sl st = Slip stitch
St(s) = Stitch(es)

Tog = Together
WS = Wrong side
Yoh = Yarn over hook

INSTRUCTIONS

All Letter and Number Pillows
(make 2 pieces alike, noting RS and WS will be reversed for Front and Back).

Note: Follow directions shown on each chart for shaping and pattern instructions. See pages 2 to 16.

Main Gusset

Ch 10.

1st row: 1 sc in 2nd ch from hook. 1 sc in each ch to end of chain. Turn. 9 sc.

2nd row: Ch 1. 1 sc in each sc to end of row. Turn.

Rep last row until Gusset measures length to fit around outer edge of Letter or Number shape.

Fasten off.

Sew Gusset seam.

Interior Gusset (optional)

Work as for Main Gusset for each section of Letter shape that requires a separate gusset.

FINISHING

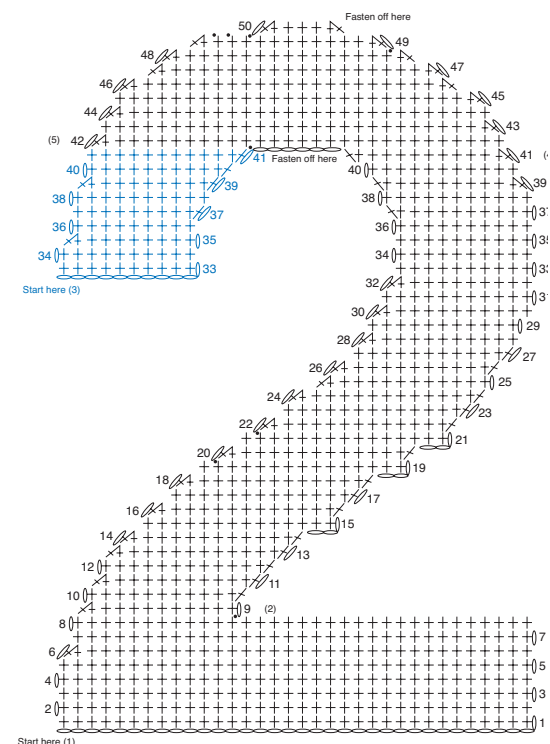
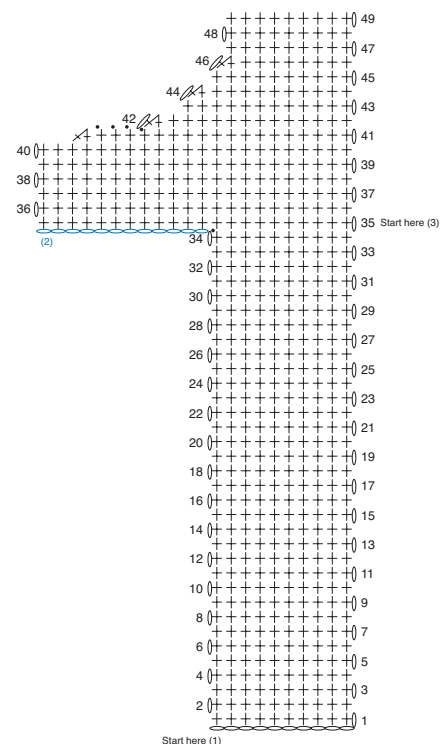
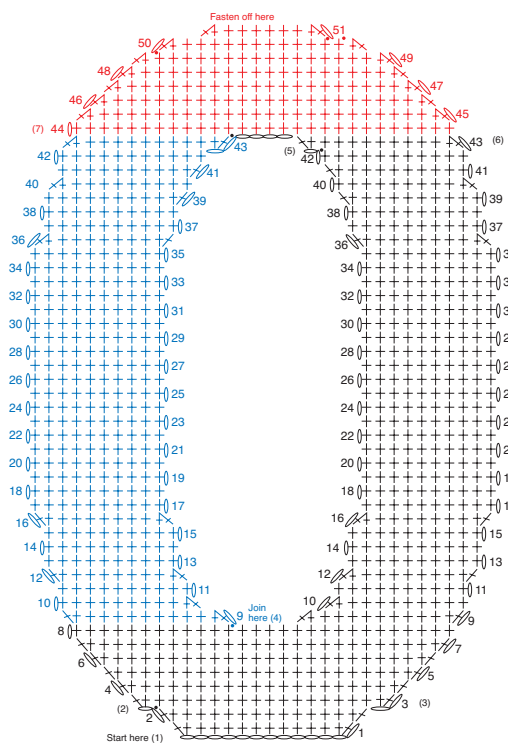
Position Main Gusset seam at lower edge of Pillow and pin Main Gusset in position. With WS tog and working through both thicknesses, join Front of Pillow and Main Gusset tog with 1 rnd of sc.

If necessary, attach Interior Gusset piece(s) in same manner.

Rep for Back of Pillow, leaving an opening approx 4" [10 cm] wide.

Stuff Pillow. Join opening closed. Fasten off.





Notes:

- 1) Ch 13. Work Rows 1-2. Drop loop to be picked up later.
- 2) Attach a separate strand of yarn in first sc of Row 2. Ch 1. Fasten off.
- 3) Pick up dropped loop at end of Row 2. Work Rows 3-8. Work Rows 9-42 on Right Side.
- 4) With RS facing, join yarn with sl st in 12th st of Row 8. Work Rows 9-43 of Left Side. Drop loop to be picked up later.
- 5) Attach a separate strand of yarn in first sc of Row 42 on Right Side. Ch 1. Fasten off.
- 6) Pick up dropped loop at end of Row 43 on Right Side. Work Row 43 across Right Side. Ch 4, join with sl st in first st of Row 43 on Left Side. Fasten off.
- 7) Pick up dropped loop at end of Row 43. Work Rows 44-51. Fasten off.

Notes:

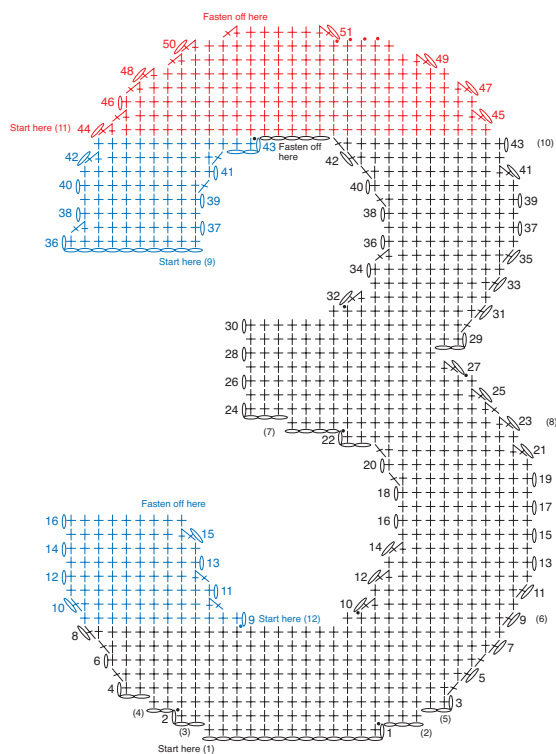
- 1) Ch 11. Work Rows 1-34. Drop loop from hook to be picked up later.
- 2) Attach a separate strand of yarn in first sc of Row 34, ch 12. Fasten off.
- 3) Pick up dropped loop at end of Row 34. Work Rows 35-49. Fasten off.

STITCH KEY

- = chain (ch)
- = slip stitch (sl st)
- † = single crochet (sc)
- ☆ = single crochet 2 together (sc2tog)

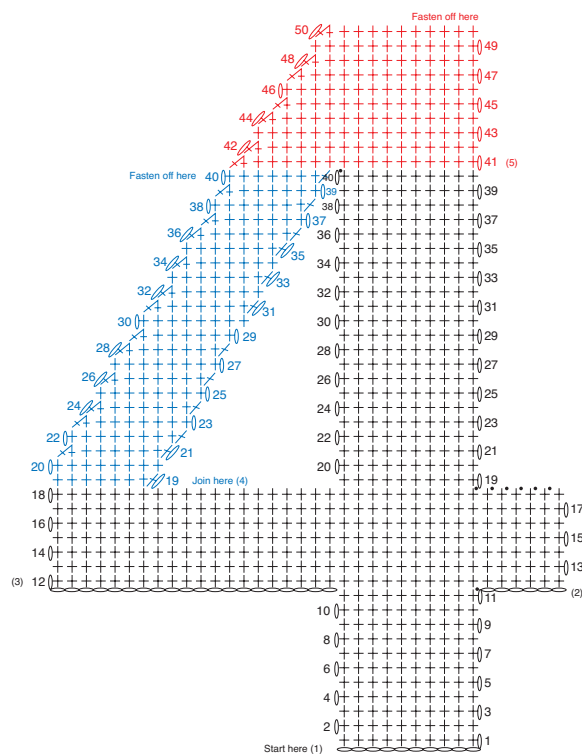
Notes:

- 1) Ch 35. Work Rows 1-8. Fasten off.
- 2) With RS facing, join yarn with sl st in 22nd st in Row 8. Work Rows 9-40. Drop loop from hook to be picked up later.
- 3) Ch 11. Work Rows 33-41. Drop loop from hook to be picked up later.
- 4) Pick up dropped loop at end of Row 40 on Right Side. Work Row 41. Ch 6. Sl st in first st of Row 41 on Left Side. Fasten off.
- 5) Pick up dropped loop at end of Row 41 on Left Side. Work Rows 42-50. Fasten off.



Notes:

- 1) Ch 14. Work Row 1. Drop loop to be picked up later.
- 2) Attach a separate strand of yarn in first st of Row 1. Ch 3. Fasten off.
- 4) Attach a separate strand of yarn in first sc of Row 2. Ch 2. Fasten off.
- 5) Pick up dropped loop at end of Row 2. Work Rows 3-8.
- 6) Work Rows 9-22 on Right Side. Drop loop to be picked up later.
- 7) Attach a separate strand of yarn in first st of Row 22. Ch 4. Fasten off.
- 8) Pick up dropped loop at end of Row 22. Work Rows 23-43. Drop loop from hook to be picked up later.
- 9) Ch 11. Work Rows 36-43. Drop loop to be picked up later.
- 10) Pick up dropped loop at end of Row 42 on Right Side. Work Row 43 on Right Side. Ch 5, sl st in first st of Row 43 on Left Side. Fasten off.
- 11) Pick up dropped loop at end of Row 43 on Left Side. Work Rows 44-51. Fasten off.
- 12) With RS facing, join yarn with sl st in 20th st of Row 7. Work Rows 9-16 of Left Side. Fasten off.

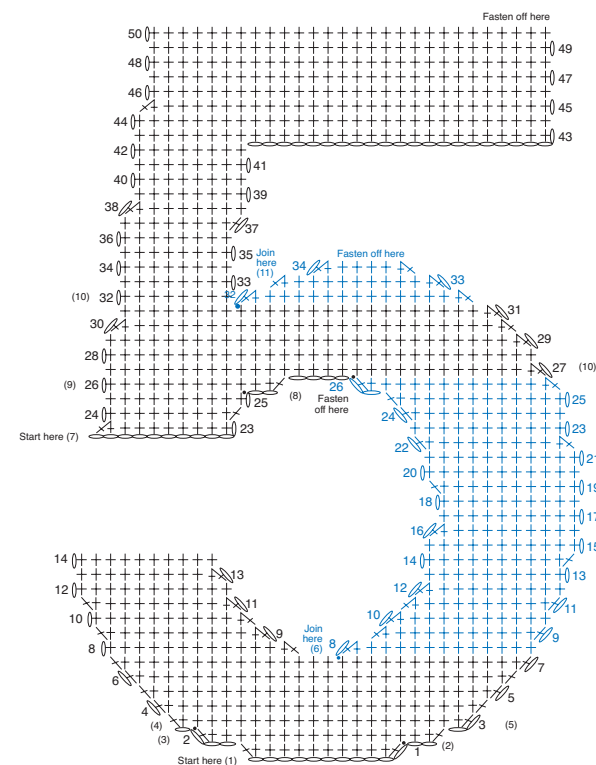


Notes:

- 1) Ch 11. Work Rows 1-11. Drop loop from hook to be picked up later.
- 2) Attach a separate strand of yarn in first st of Row 11. Ch 6. Fasten off.
- 3) Pick up dropped loop at end of Row 11. Work Rows 12-18. Work Rows 19-40 of Right Side. Drop loop from hook to be picked up later.
- 4) With RS facing, join yarn with sl st in 29th st of Row 18. Work Rows 19-40 of Left Side, joining with sl st in first st of Row 40 on Right Side. Fasten off.
- 5) Pick up dropped loop at end of Row 40 on Right Side. Work Rows 41-50. Fasten off.

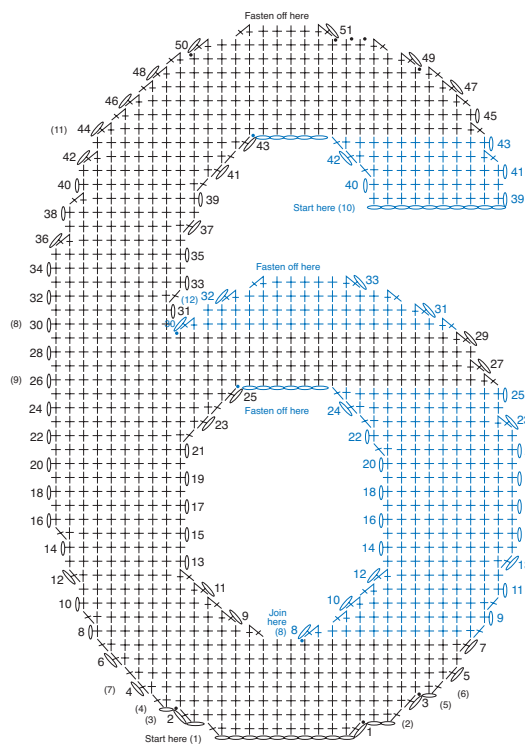
STITCH KEY

- = chain (ch)
- = slip stitch (sl st)
- † = single crochet (sc)
- △ = single crochet 2 together (sc2tog)



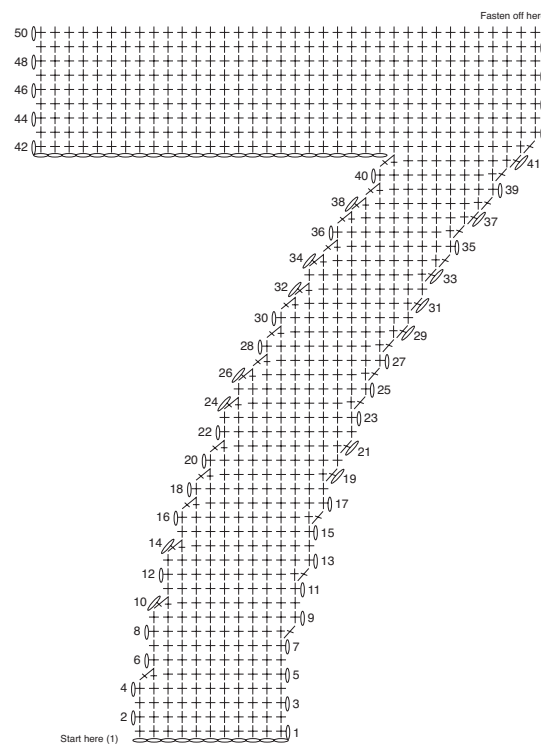
Notes:

- 1) Ch 11. Work Row 1. Drop loop from hook to be picked up later.
- 2) Attach a separate strand of yarn in first st of Row 1. Ch 2. Fasten off.
- 3) Pick up dropped loop at end of Row 1. Work Row 2.
- 4) Attach a separate strand of yarn in first st of Row 2. Ch 1. Fasten off.
- 5) Pick up dropped loop at end of Row 2. Work Rows 3-7. Work Rows 8-14 on Left Side. Fasten off.
- 6) With WS facing, join yarn with sl st in 17th st of Row 7. Work Rows 8-26. Drop loop from hook to be picked up later.
- 7) Ch 11. Work Rows 23-25 of Left Side. Drop loop from hook to be picked up later.
- 8) Attach a separate strand of yarn in first st of Row 25. Ch 2. Fasten off.
- 9) Pick up dropped loop at end of Row 25. Work Row 26. Ch 4, join with sl st in first st of Row 26 on Right Side. Fasten off.
- 10) Pick up dropped loop at end of Row 26 on Right Side. Work Rows 27-31. Work Rows 32-50 on Left Side and Top. Fasten off.
- 11) With WS facing, join yarn with sl st in 9th st of Row 31, work Rows 32-34 of Right Side. Fasten off.



Notes:

- 1) Ch 11. Work Row 1. Drop loop from hook to be picked up later.
- 2) Attach a separate strand of yarn in first st of Row 1. Ch 2. Fasten off.
- 3) Pick up dropped loop at end of Row 1. Work Row 2. Drop loop from hook to be picked up later.
- 4) Attach a separate strand of yarn in first st of Row 2. Ch 1. Fasten off.
- 5) Pick up dropped loop at end of Row 2. Work Row 3. Drop loop from hook to be picked up later.
- 6) Attach a separate strand of yarn in first st of Row 3. Ch 1. Fasten off.
- 7) Pick up dropped loop at end of Row 4. Work Rows 4-7. Work Rows 8-25 on Left Side. Drop loop from hook to be picked up later.
- 8) With WS facing, join yarn with sl st in 16th st of Row 7. Work Rows 8-25 on Right Side. Ch 6, join with sl st in first st of Row 25 on Left Side. Fasten off.
- 9) Pick up dropped loop at end of Row 25 on Left Side. Work Rows 26-29. Work Rows 27-43 on Left Side. Drop loop from hook to be picked up later.
- 10) Ch 11. Work Rows 39-43 of Right Side. Ch 5, join with sl st in first st in Row 43 on Left Side. Fasten off.
- 11) Pick up dropped loop at end of Row 43 on Left Side. Work Rows 44-51. Fasten off.
- 12) With WS facing, join yarn with sl st in 10th st of Row 29. Work Rows 30-33 on Right Side. Fasten off.

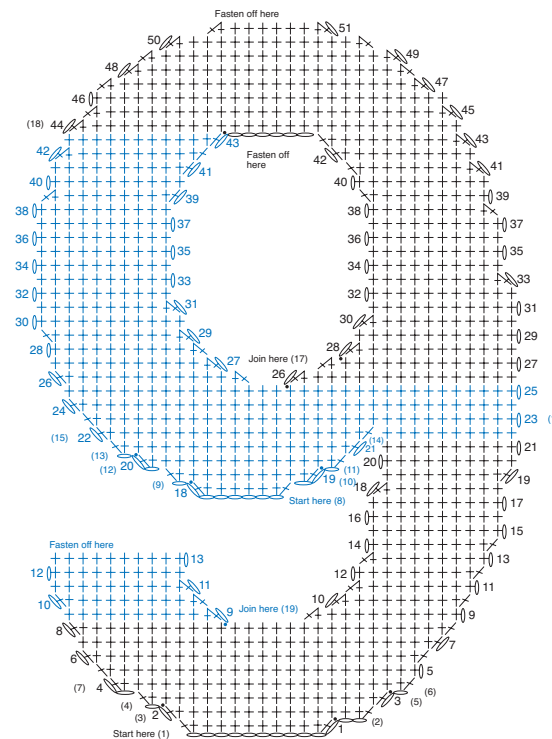
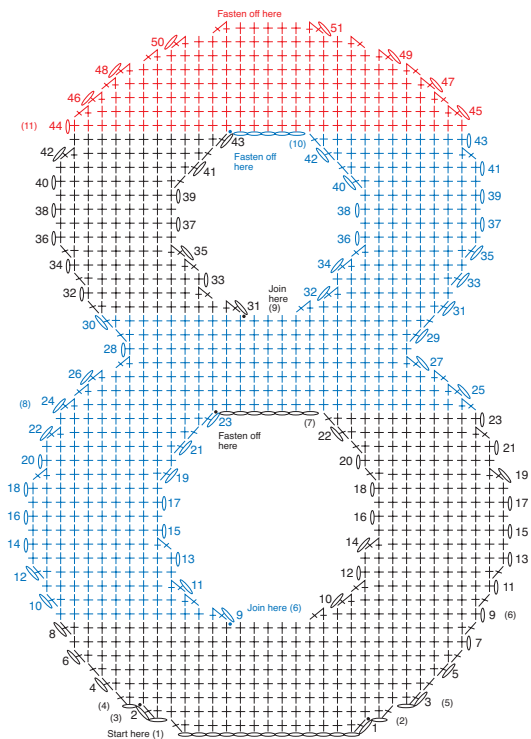


Notes:

- 1) Ch 12. Work Rows 1-50. Fasten off.

STITCH KEY

- = chain (ch)
- = slip stitch (sl st)
- ⊥ = single crochet (sc)
- ⋈ = single crochet 2 together (sc2tog)



STITCH KEY

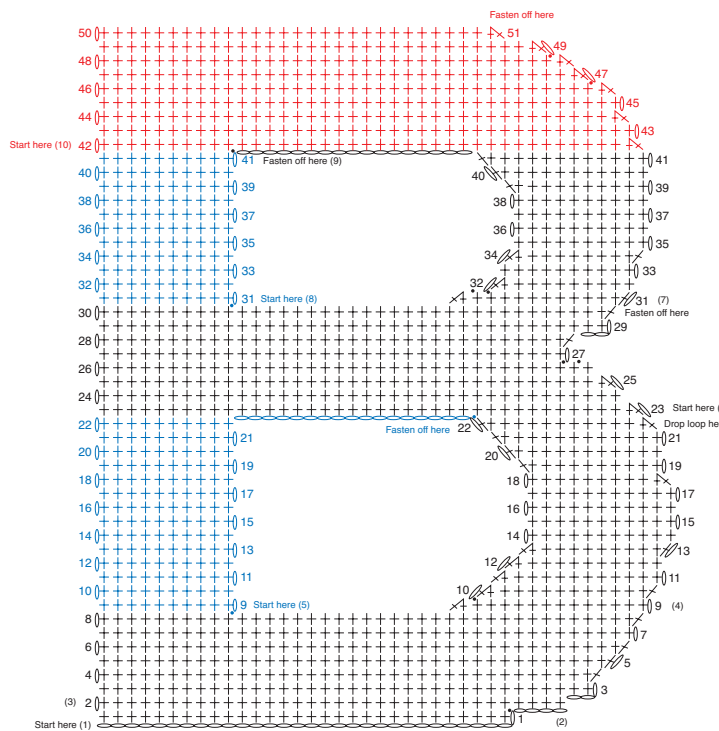
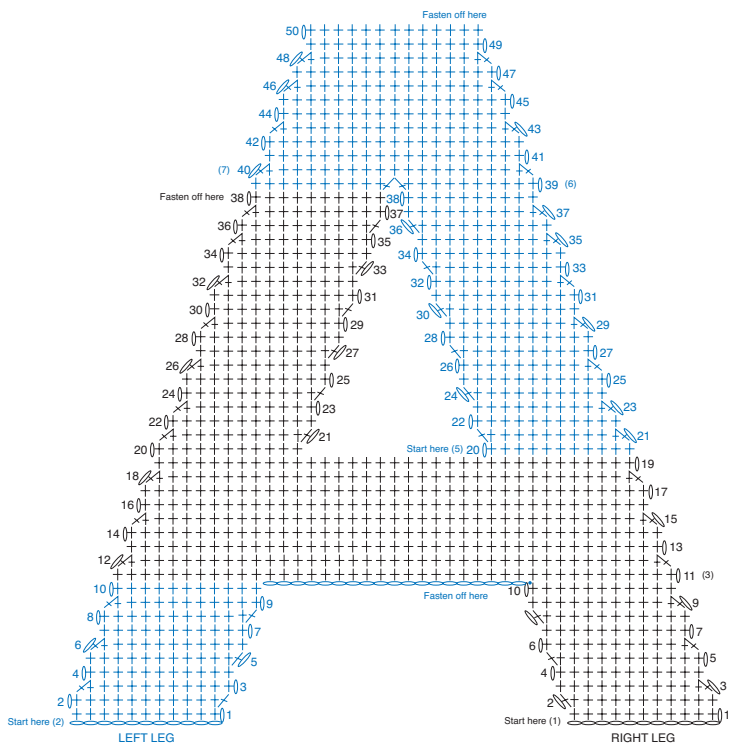
- = chain (ch)
- = slip stitch (sl st)
- † = single crochet (sc)
- ✱ = single crochet 2 together (sc2tog)

Notes:

- 1) Ch 14. Work Row 1. Drop loop to be picked up later.
- 2) Attach a separate strand of yarn in first sc of Row 1. Ch 1. Fasten off.
- 3) Pick up dropped loop at end of Row 1. Work Row 2.
- 4) Attach a separate strand of yarn in first sc of Row 2. Ch 1. Fasten off.
- 5) Pick up dropped loop at end of Row 2. Work Rows 3-8. Work Rows 9-23 on Right Side. Drop loop to be picked up later.
- 6) With RS facing, attach a separate strand of yarn in 18th st of Row 8. Work Rows 8-23 on Left Side. Drop loop to be picked up later.
- 7) Pick up dropped loop at end of Row 23 on Right Side. Ch 7, join with sl st in first st of Row 23 on Left Side. Fasten off.
- 8) Pick up dropped loop at end of Row 23 on Left Side. Work Rows 24-30. Work Rows 31-43 on Right Side.
- 9) With RS facing, join yarn with a sl st in 15th st of Row 30. Work Rows 31-43 on Left Side. Drop loop to be picked up later.
- 10) Pick up dropped loop at end of Row 43 on Right Side. Ch 5, join with sl st in first st of Row 43 on Left Side. Fasten off.
- 11) Pick up dropped loop at end of Row 43 on Left Side. Work Rows 44-51. Fasten off.

Notes:

- 1) Ch 14. Work Row 1. Drop loop to be picked up later.
- 2) Attach a separate strand of yarn in first st of Row 1. Ch 2. Fasten off.
- 3) Pick up dropped loop at end of Row 1. Work Row 2.
- 4) Attach a separate strand of yarn in first sc of Row 2. Ch 1. Fasten off.
- 5) Pick up dropped loop at end of Row 2. Work Row 3.
- 6) Attach a separate strand of yarn in first sc of Row 3. Ch 1. Fasten off.
- 7) Pick up dropped loop at end of Row 3. Work Rows 4-8. Work Rows 9-21 on Right Side. Fasten off.
- 8) Ch 7. With WS facing, work Row 18 on Left Side. Drop loop to be picked up later.
- 9) Attach a separate strand of yarn in first st of Row 18. Ch 1. Fasten off.
- 10) Pick up dropped loop at end of Row 18. Work Row 19.
- 11) Attach a separate strand of yarn in first st of Row 19. Ch 1. Fasten off.
- 12) Pick up dropped loop at end of Row 19. Work Row 20.
- 13) Attach a separate strand of yarn in first st of Row 20. Ch 1. Fasten off.
- 14) Pick up dropped loop at end of Row 20. Work Row 21.
- 15) Work Row 22 across Left Side, then work Row 22 across Row 21 of Right Side.
- 16) Work Rows 23-25. Work Rows 26-43 on Left Side. Drop loop to be picked up later.
- 17) With RS facing, join a separate strand in 17th st in Row 25. Work Rows 26-43 on Right Side. Ch 6, join with sl st in first st in Row 43 on Left Side. Fasten off.
- 18) Pick up dropped loop at end of Row 43 on Left Side. Work Rows 44-51. Fasten off.
- 19) With RS facing, join yarn with a sl st in 18th st of Row 8. Work work Rows 9-13 on Left Side. Fasten off.



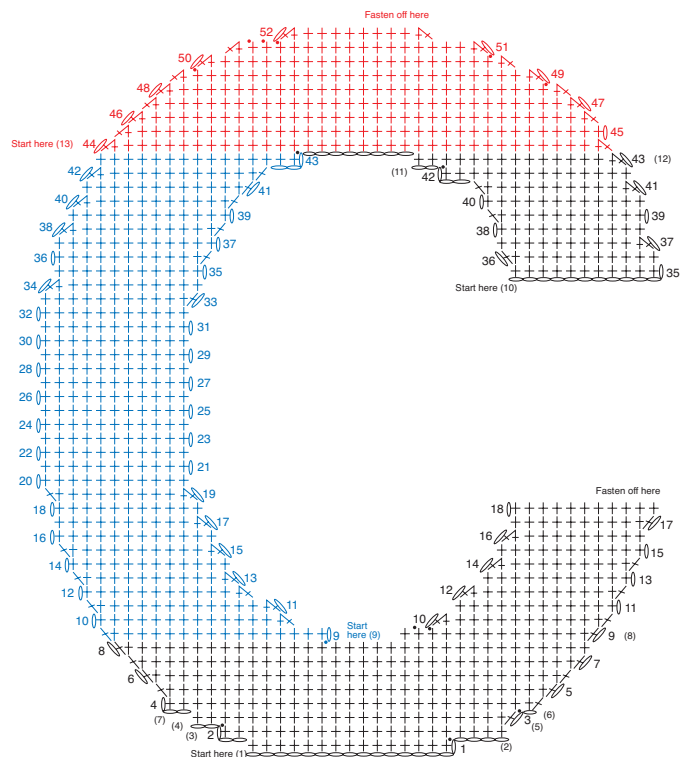
- STITCH KEY**
- = chain (ch)
 - = slip stitch (sl st)
 - ⊕ = single crochet (sc)
 - △ = single crochet 2 together (sc2tog)

Notes:

- 1) Ch 12. Work Rows 1-10 of RIGHT LEG. Drop loop to be picked up later.
- 2) Ch 12. Work Rows 1-10 of LEFT LEG. Ch 19. Sl st in first st of Row 10 on RIGHT LEG. Fasten off.
- 3) Pick up dropped loop at end of Row 10 on Right Side. Work Rows 11-19. Work Rows 20-38 of Left Side. Fasten off.
- 4) With WS facing, join yarn with sl st in 25th st of Row 19. Work Rows 20-38 of Right Side.
- 5) Row 39: Ch 1. 1 sc in each of first 10 sts. Sc2tog over same st as last sc and in first sc of Row 39 of Left Side. 1 sc in same st as last leg of sc2tog. 1 sc in each of last 9 sts. Turn.
- 6) Work Rows 40-50. Fasten off.

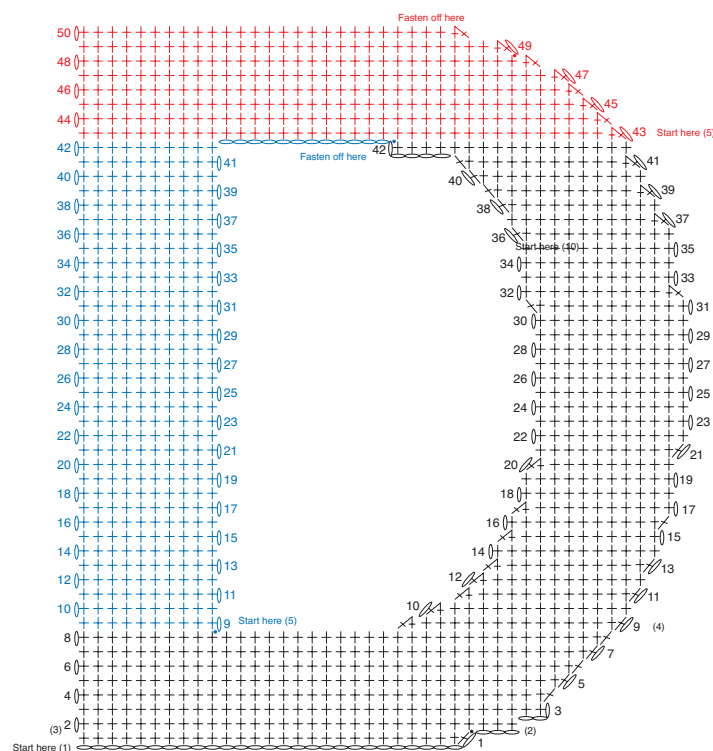
Notes:

- 1) Ch 31. Work Row 1. Drop loop to be picked up later.
- 2) Attach a separate strand of yarn in first sc of Row 1, ch 4. Fasten off.
- 3) Pick up dropped loop at end of Row 1, work Rows 2-8.
- 4) Work Rows 9-22 of Right Side. Drop loop to be picked up later.
- 5) With RS facing, join yarn with sl st in last st of Row 8. Work Rows 9-22. Ch 17. Join with sl st in first sc of Row 22 on Right Side. Fasten off.
- 6) Pick up dropped loop at end of Row 22 on Right Side. Work Rows 23-30.
- 7) Work Rows 31-41 of Right Side. Ch 17. Fasten off.
- 8) With RS facing, skip next 15 sc from Row 30. Join yarn with sl st in next st. Work Rows 31-40.
- 9) Join ch 17 at top of first sc in Row 41.
- 10) Work Rows 42-51. Fasten off.



Notes:

- 1) Ch 16. Work Row 1. Drop loop to be picked up later.
- 2) Attach a separate strand of yarn in first sc of Row 1. Ch 4. Fasten off.
- 3) Pick up dropped loop at end of Row 1. Work Row 2. Drop loop to be picked up later.
- 4) Attach a separate strand of yarn in first sc of Row 2. Ch 2. Fasten off.
- 5) Pick up dropped loop at end of Row 2. Work Row 3. Drop loop to be picked up later.
- 6) Attach a separate strand of yarn in first sc of Row 3. Ch 1. Fasten off.
- 7) Pick up dropped loop at end of Row 3. Work Rows 4-8.
- 8) Work Rows 9-18 of Right Side. Fasten off.
- 9) With RS facing, join yarn with sl st in 20th st of Row 8. Work Rows 9-43. Fasten off.
- 10) Ch 12. Work Rows 35-43. Drop loop from hook to be picked up later.
- 11) Attach a separate strand of yarn in first sc of Row 42. Ch 2. Fasten off.
- 12) Pick up dropped loop at end of Row 42. Work Row 43. Ch 8. Sl st in first st of Row 43 on Left Side. Fasten off.
- 13) Pick up dropped loop at end of Row 43 on Left Side. Work Rows 44-52. Fasten off.

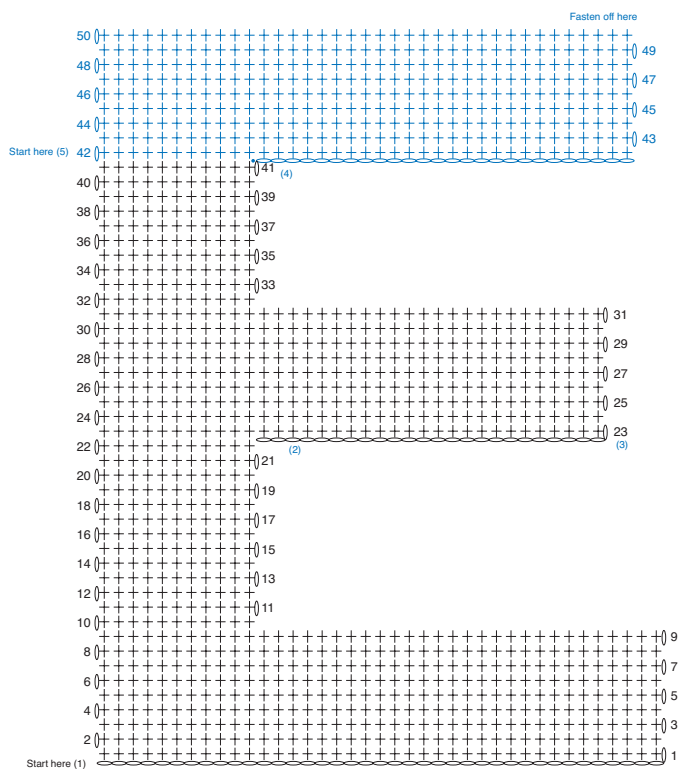


Notes:

- 1) Ch 28. Work Row 1. Drop loop to be picked up later.
- 2) Attach a separate strand of yarn in first sc of Row 1. Ch 3. Fasten off.
- 3) Pick up dropped loop at end of Row 1. Work Rows 2-8.
- 4) Work Rows 9-42 on Right Side. Drop loop to be picked up later.
- 5) With RS facing, join yarn with sl st in 29th st of Row 8. Work Rows 9-42 on Left Side. At end of Row 42, ch 12, sl st in first st of Row 42 of Right Side. Fasten off.
- 6) Pick up dropped loop at end of Row 42 on Right Side. Work Rows 43-50. Fasten off.

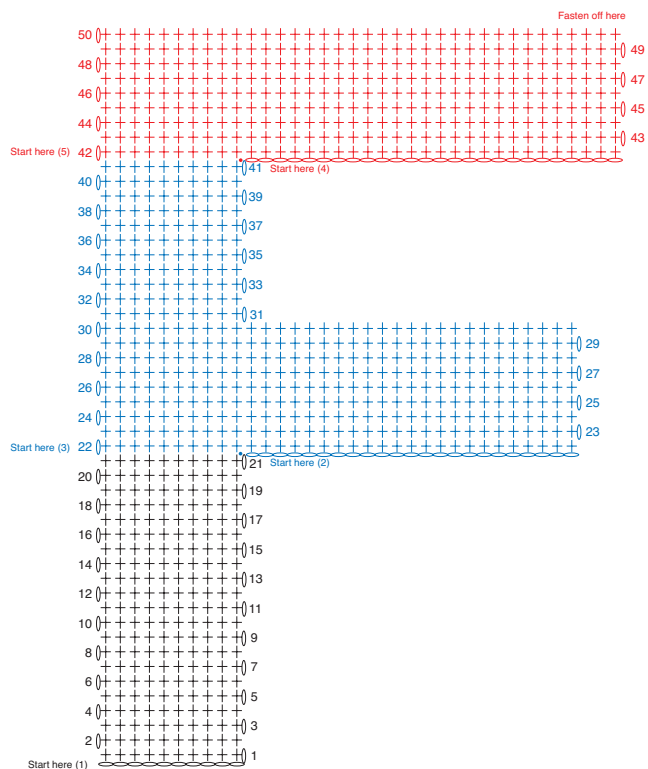
STITCH KEY

- = chain (ch)
- = slip stitch (sl st)
- † = single crochet (sc)
- ☆ = single crochet 2 together (sc2tog)



Notes:

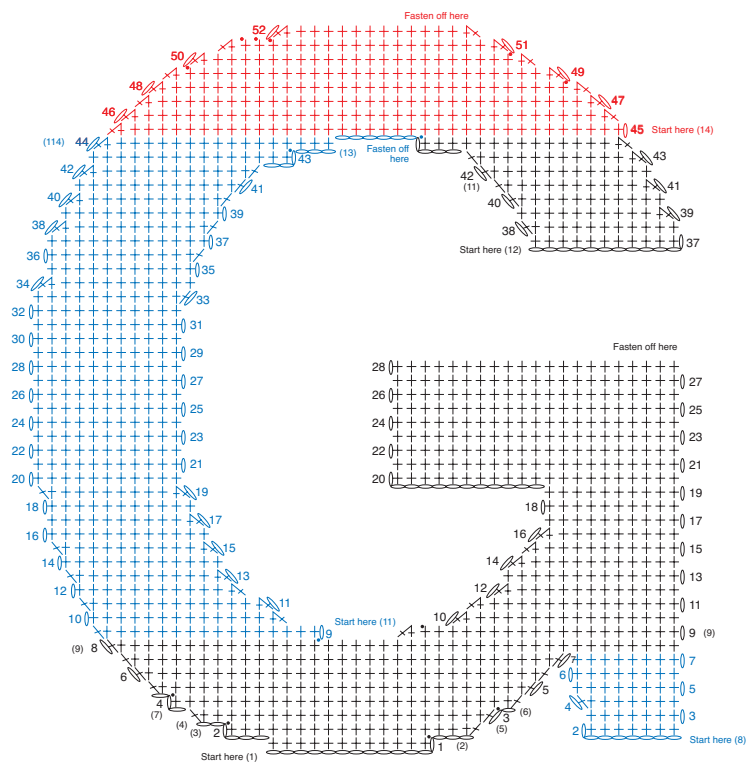
- 1) Ch 40. Work Rows 1-21.
- 2) At end of Row 22, ch 25.
- 3) Work Rows 23-41. Drop loop to be picked up later.
- 4) Attach a separate strand of yarn in first sc of Row 41, ch 26. Fasten off.
- 5) Pick up dropped loop at end of Row 41. Work Rows 42-50. Fasten off.



Notes:

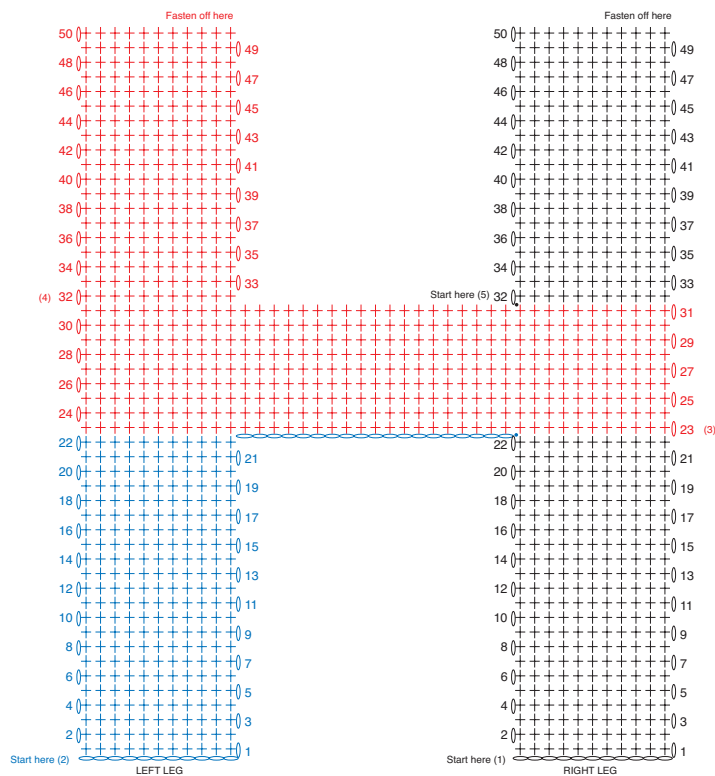
- 1) Ch 11. Work Rows 1-21. Drop loop to be picked up later.
- 2) Attach a separate strand of yarn in first sc of Row 21. Ch 23. Fasten off.
- 3) Pick up dropped loop at end of Row 21. Work Rows 22-41. Drop loop to be picked up later.
- 4) Attach a separate strand of yarn in first sc of Row 41. Ch 26. Fasten off.
- 5) Pick up dropped loop at end of Row 41. Work Rows 42-50. Fasten off.

- STITCH KEY
- = chain (ch)
 - = slip stitch (sl st)
 - † = single crochet (sc)
 - △ = single crochet 2 together (sc2tog)



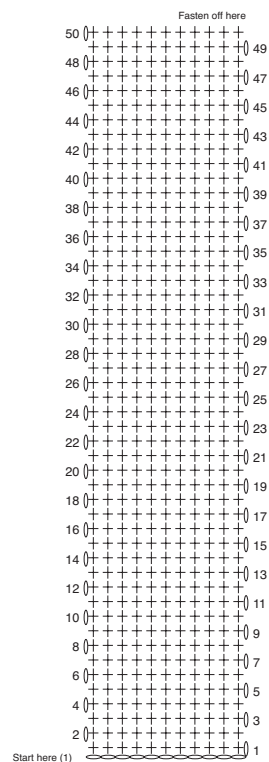
Notes:

- 1) Ch 13. Work Row 1. Drop loop to be picked up later.
- 2) Attach a separate strand of yarn in first sc of Row 1. Ch 3. Fasten off.
- 3) Pick up dropped loop at end of Row 1. Work Row 2. Drop loop to be picked up later.
- 4) Attach a separate strand of yarn in first sc of Row 2. Ch 2. Fasten off.
- 5) Pick up dropped loop at end of Row 2. Work Row 3.
- 6) Attach a separate strand of yarn in first sc of Row 3. Ch 1. Fasten off.
- 7) Pick up dropped loop at end of Row 3. Work Rows 4-7. Drop loop to be picked up later.
- 8) Ch 8. Work Rows 2-7 on Right Side. Fasten off.
- 9) Pick up dropped loop at end of Row 7. Work Row 8.
- 10) Work Rows 9-28 of Right Side. Fasten off.
- 11) With RS facing, join yarn in 27th st of Row 8. Work Rows 9-43 of Left Side. Drop loop to be picked up later.
- 12) Ch 12. Work Rows 37-44 of Right Side. Drop loop to be picked up later.
- 13) Attach a separate strand of yarn in first sc of Row 43. Ch 3. Fasten off.
- 14) Pick up dropped loop at end of Row 43. Work Row 44. Ch 8, sl st in first st of Row 43 on Left Side. Fasten off.
- 15) Pick up dropped loop at end of Row 43 on Right Side. Work Rows 44-52. Fasten off.



Notes:

- 1) Ch 12. Work Rows 1-22 of RIGHT LEG. Drop loop to be picked up later.
- 2) Ch 12. Work Rows 1-22 of LEFT LEG. At end of Row 22, ch 19, sl st in first st of Row 22 of RIGHT LEG. Fasten off.
- 3) Pick up dropped loop at end of Row 22 on RIGHT LEG. Work Rows 23-31.
- 4) Work Rows 32-50 on Left Side. Fasten off.
- 5) With WS facing, attach a separate strand of yarn with sl st in 31st st of Row 31. Work Rows 32-50 of Left Side. Fasten off.

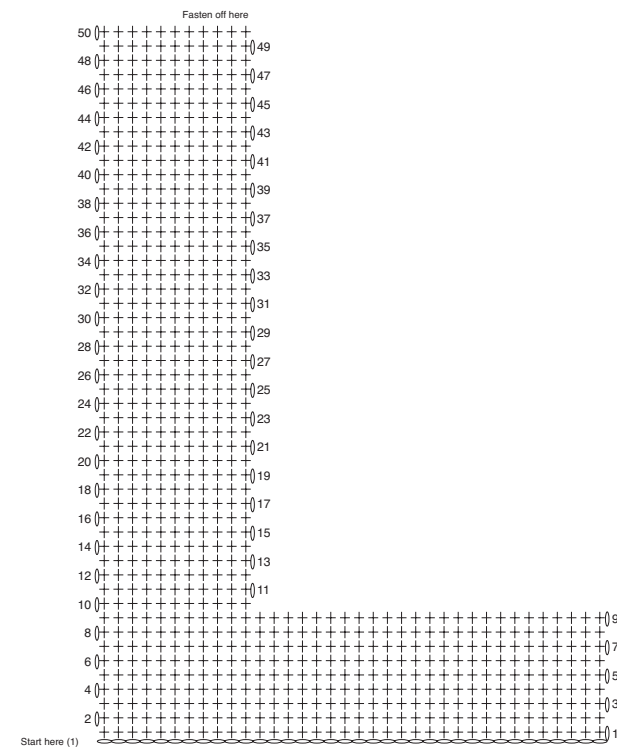
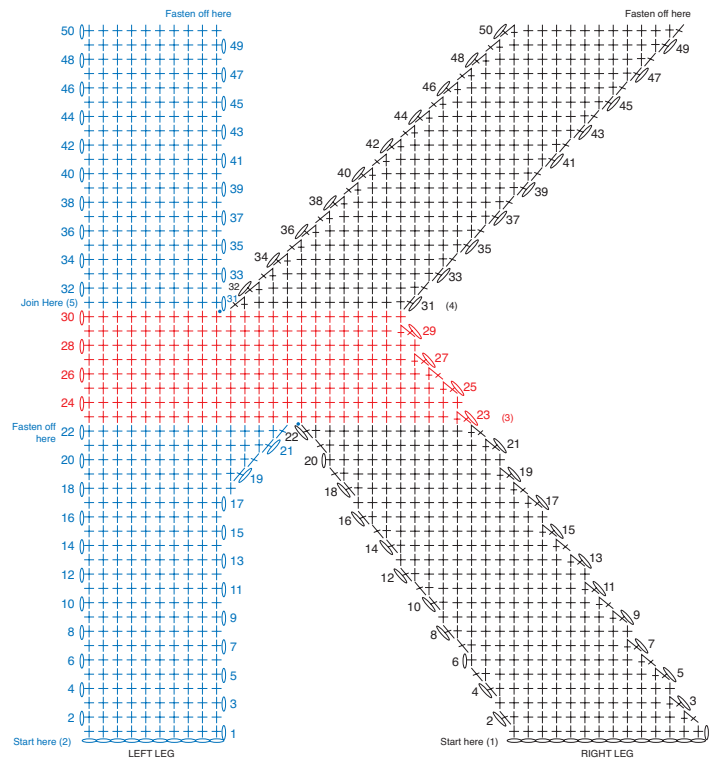
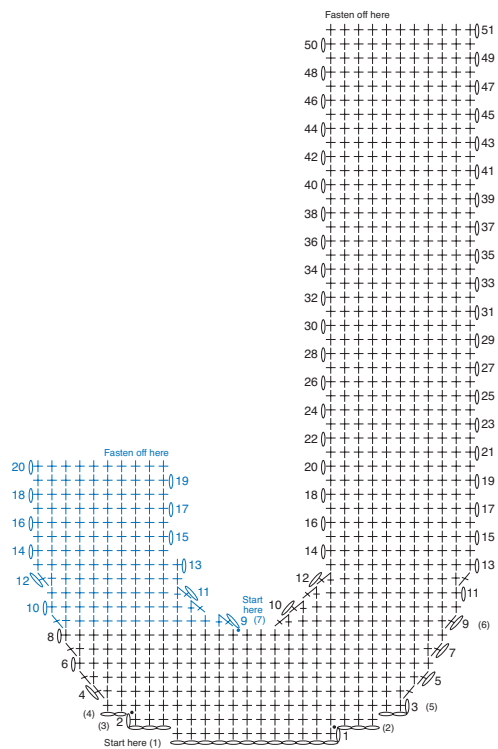


Notes:

- 1) Ch 12. Work Rows 1-50. Fasten off.

STITCH KEY

- = chain (ch)
- = slip stitch (sl st)
- ⊕ = single crochet (sc)
- △ = single crochet 2 together (sc2tog)



Notes:

- 1) Ch 13. Work Row 1. Drop loop to be picked up later.
- 2) Attach a separate strand of yarn in first sc of Row 1. Ch 3. Fasten off.
- 3) Pick up dropped loop at end of Row 1. Work Row 2. Drop loop to be picked up later.
- 4) Attach a separate strand of yarn in first sc of Row 2. Ch 2. Fasten off.
- 5) Pick up dropped loop at end of Row 2. Work Rows 3-8.
- 6) Work Rows 9-51 on Right Side. Fasten off.
- 7) With RS facing, join yarn with sl st in 16th st of Row 8. Work Rows 9-20 of Left Side. Fasten off.

Notes:

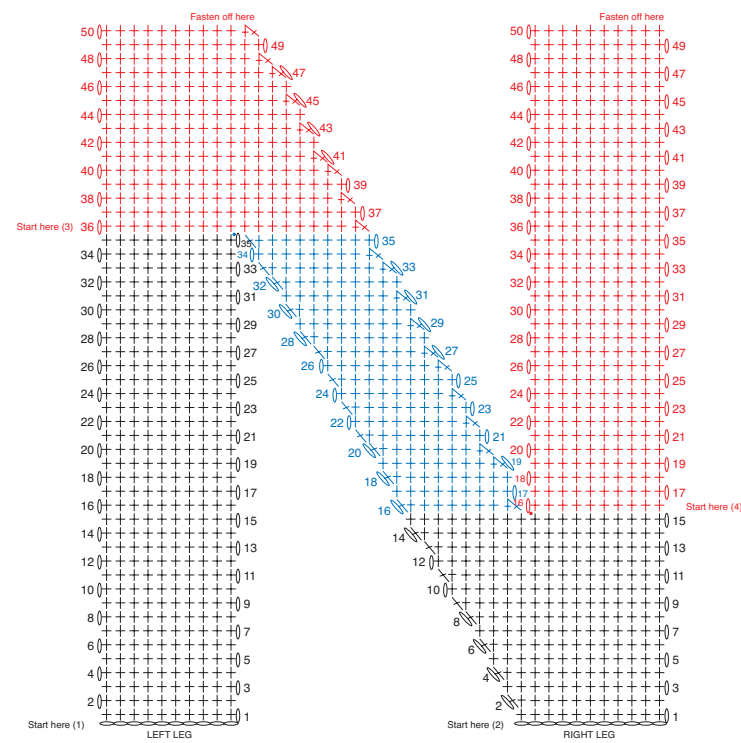
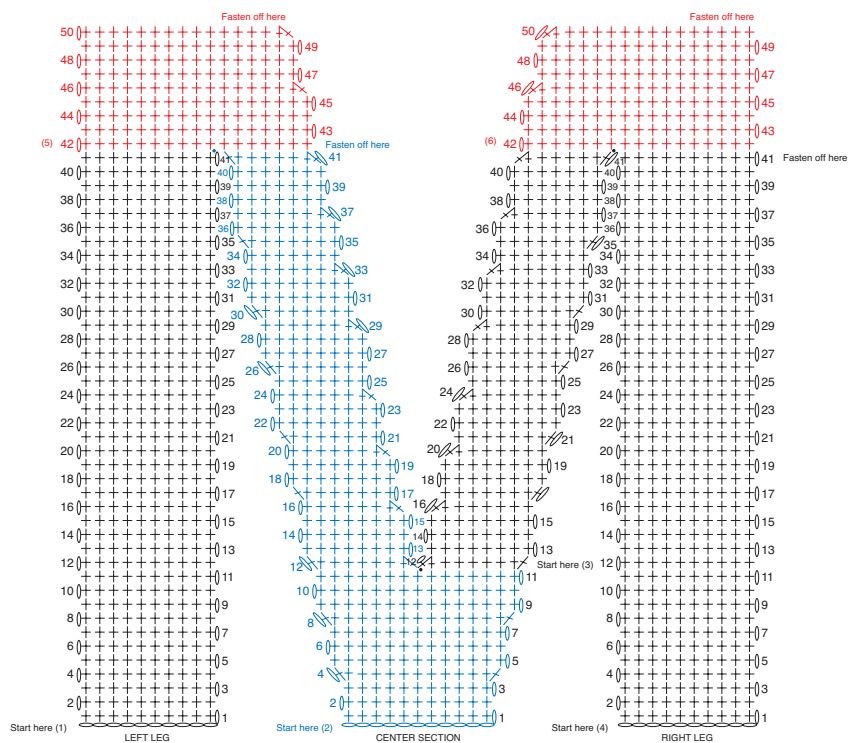
- 1) Ch 15. Work Rows 1-22 of RIGHT LEG. Drop loop to be picked up later.
- 2) Ch 11. Work Rows 1-22 of LEFT LEG. At end of Row 22, sl st in first st of Row 22 of RIGHT LEG. Fasten off.
- 3) Pick up dropped loop at end of Row 22 on Right Side. Work Rows 23-30.
- 4) Work Rows 31-50 on Left Side. Fasten off.
- 5) With RS facing, join yarn with sl st in 14th st of Row 30. Work Rows 31-50 of Left Side. Fasten off.

Notes:

- 1) Ch 37. Work Rows 1-50. Fasten off.

STITCH KEY

- = chain (ch)
- = slip stitch (sl st)
- ⊕ = single crochet (sc)
- △ = single crochet 2 together (sc2tog)



STITCH KEY

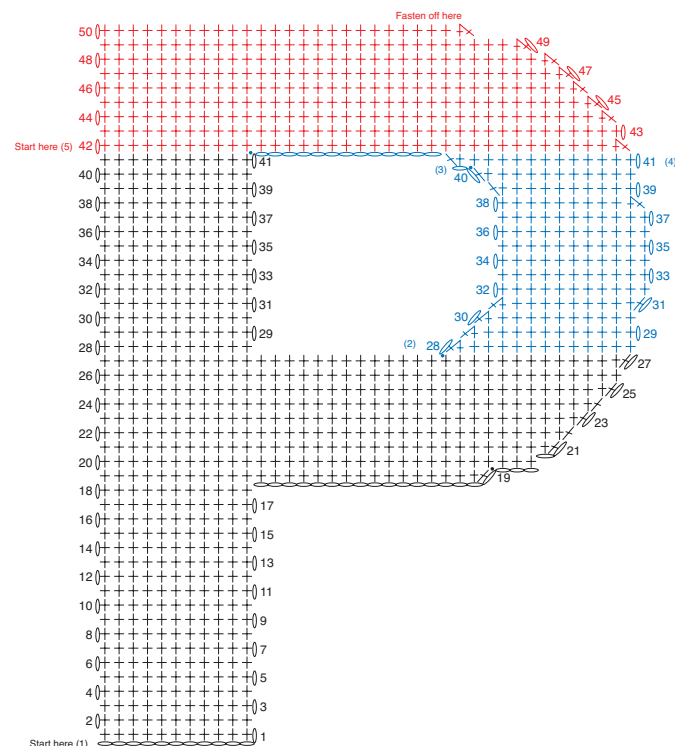
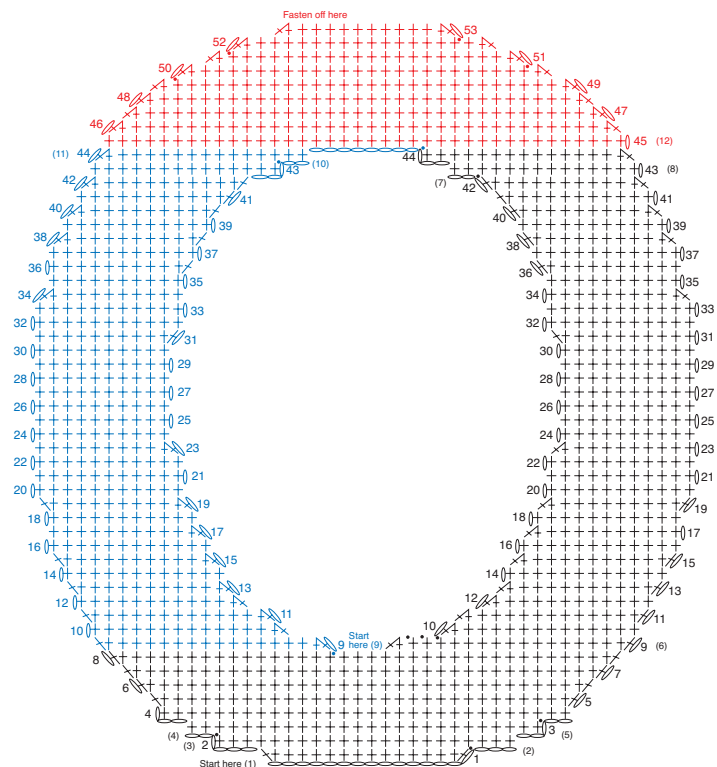
- = chain (ch)
- = slip stitch (sl st)
- ⊕ = single crochet (sc)
- △ = single crochet 2 together (sc2tog)

Notes:

- 1) Ch 11. Work Rows 1-41 of LEFT LEG. Drop loop to be picked up later.
- 2) Ch 12. Work Rows 1-11 of CENTER SECTION. Work Rows 12-41 of Left Side of Center section. Sl st in first st of Row 41 of Left Leg. Fasten off.
- 3) With WS facing, join yarn with sl st in 8th st of Row 11, in same st as last st of Row 12 on Left side. Work Rows 12-41 of Right Side of CENTER SECTION. Drop loop to be picked up later.
- 4) Ch 11. Work Rows 1-41 of RIGHT LEG. At end of Row 41, sl st in first st of Row 41 of Right Side of CENTER SECTION. Fasten off.
- 5) Pick up dropped loop at end of Row 41 of LEFT LEG. Work Rows 42-50 of Left Side. Fasten off.
- 6) Pick up dropped loop at end of Row 41 of Right Side of CENTER SECTION. Work Rows 42-50 of Right Side. Fasten off.

Notes:

- 1) Ch 11. Work Rows 1-35 of LEFT LEG. Drop loop to be picked up later.
- 2) Ch 12. Work Rows 1-15 of RIGHT LEG. Work Rows 16-35 of Left Side of RIGHT LEG. Sl st in first st of Row 35 of LEFT LEG. Fasten off.
- 3) Pick up dropped loop at end of Row 35 of LEFT LEG. Work Rows 36-50 of Left Side. Fasten off.
- 4) With WS facing, join yarn with sl st in 10th st of Row 15 of RIGHT LEG. Work Rows 16-50 of RIGHT LEG. Fasten off.



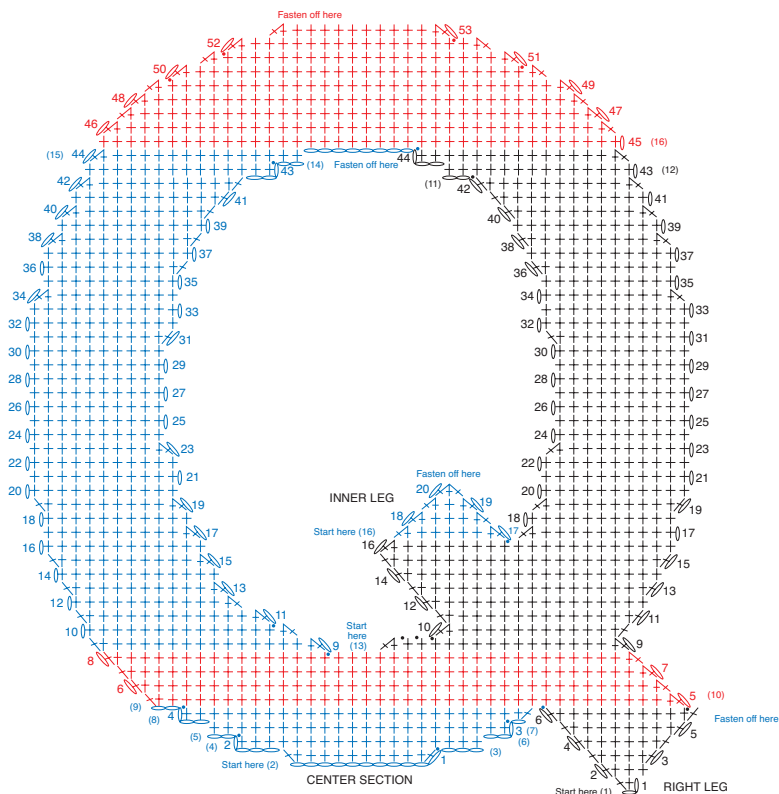
- STITCH KEY**
- = chain (ch)
 - = slip stitch (sl st)
 - ⊥ = single crochet (sc)
 - △ = single crochet 2 together (sc2tog)

Notes:

- 1) Ch 15. Work Row 1. Drop loop to be picked up later.
- 2) Attach a separate strand of yarn in first sc of Row 1. Ch 3. Fasten off.
- 3) Pick up dropped loop at end of Row 1. Work Row 2. Drop loop to be picked up later.
- 4) Attach a separate strand of yarn in first sc of Row 2. Ch 2. Fasten off.
- 5) Pick up dropped loop at end of Row 2. Work Rows 3-8.
- 6) Work Rows 9-42 of Right Side.
- 7) Attach a separate strand of yarn with sl st in first st of Row 42. Ch 2. Fasten off. Drop loop to be picked up later.
- 8) Pick up dropped loop at end of Row 42. Work Rows 43-44. Drop loop to be picked up later.
- 9) With RS facing, join yarn with sl st in 22nd st of Row 8. Work Rows 9-43 of Left Side. Drop loop to be picked up later.
- 10) Attach a separate strand of yarn with sl st in first st of Row 43. Ch 2. Fasten off.
- 11) Pick up dropped loop at end of Row 43. Work Row 44. Ch 8, sl st in first st of Row 44 of Right Side. Fasten off.
- 12) Pick up dropped loop at end of Row 44 on Right Side. Work Rows 45-53. Fasten off.

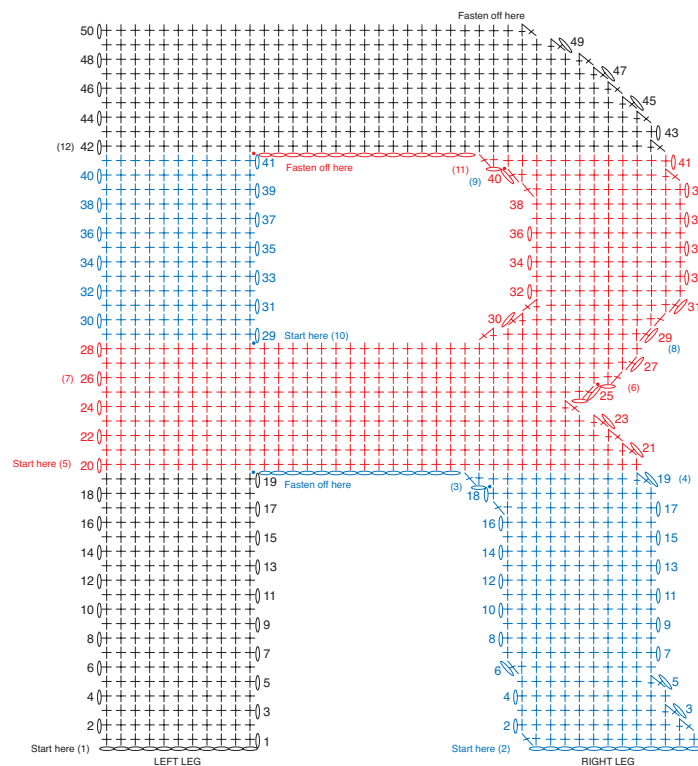
Notes:

- 1) Ch 12. Work Rows 1-27. Work Rows 28-41 of Left Side. Drop loop from hook to be picked up later.
- 2) With WS facing, join yarn with sl st in 25th st in Row 27. Work Rows 28-40 of Right Side. Drop loop from hook to be picked up later.
- 3) Attach a separate strand of yarn in first st of Row 40 on Right Side. Ch 1. Fasten off.
- 4) Pick up dropped loop at end of Row 40 on Right Side. Work Row 41. Ch 13. sl st in first st of Row 41 on Left Side. Fasten off.
- 5) Pick up dropped loop at end of Row 41 of Left Side. Work Rows 42-50. Fasten off.



Notes:

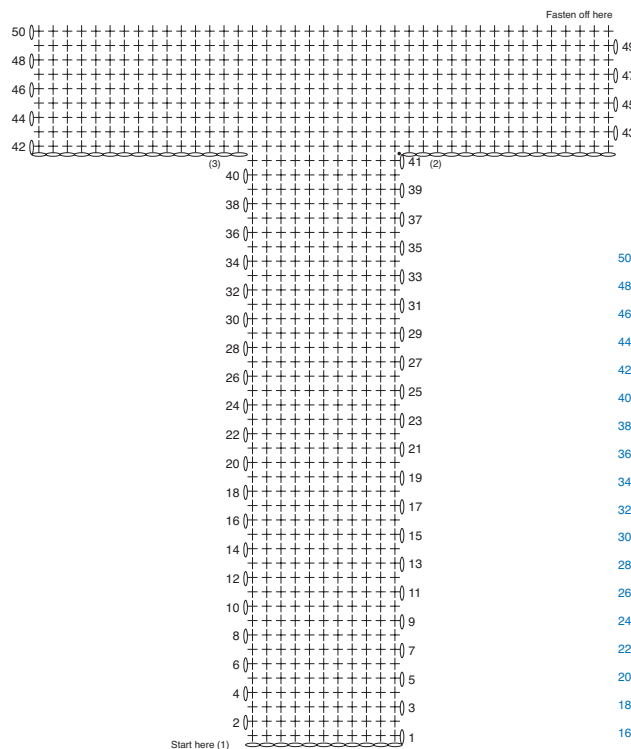
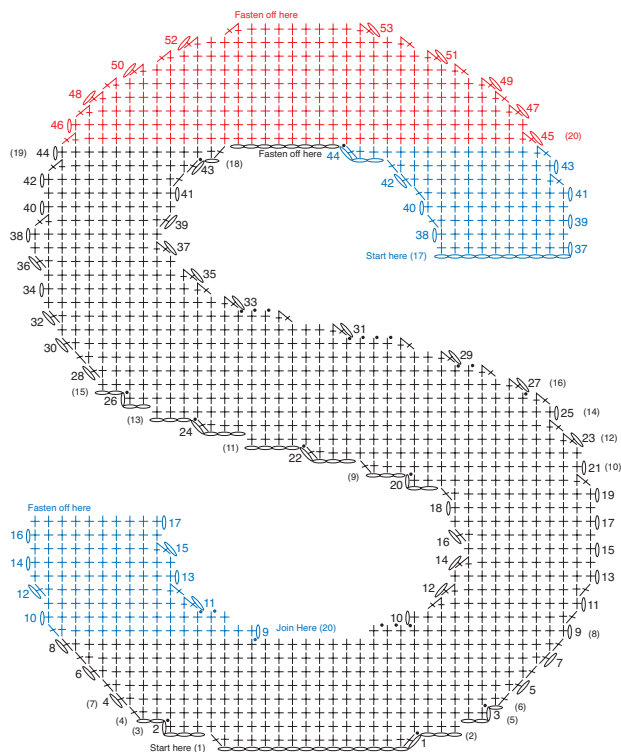
- 1) Ch 2. Work Rows 1-6 of RIGHT LEG. Drop loop to be picked up later.
- 2) Ch 11. Work Row 1 of CENTER SECTION. Drop loop to be picked up later.
- 3) Attach a separate strand of yarn in first sc of Row 1. Ch 3. Fasten off.
- 4) Pick up dropped loop at end of Row 1. Work Row 2. Drop loop to be picked up later.
- 5) Attach a separate strand of yarn in first sc of Row 2. Ch 2. Fasten off.
- 6) Pick up dropped loop at end of Row 2. Work Row 3. Drop loop to be picked up later.
- 7) Attach a separate strand of yarn in first sc of Row 3. Ch 1. Fasten off.
- 8) Pick up dropped loop at end of Row 3. Work Row 4, sl st in first st of Row 6 of RIGHT LEG. Fasten off.
- 9) Attach a separate strand of yarn in first st of Row 4 of CENTER SECTION. Ch 2. Fasten off.
- 10) Pick up dropped loop at end of Row 6 of RIGHT LEG. Work Rows 5-8. Work Rows 9-16 of Right Side. Work Rows 17-42 on Far Right Side.
- 11) Attach a separate strand of yarn with sl st in first st of Row 42. Ch 2. Fasten off. Drop loop to be picked up later.
- 12) Pick up dropped loop at end of Row 42. Work Rows 43-44. Drop loop to be picked up later.
- 13) Attach a separate strand of yarn in 23rd st of Row 8. Work Rows 9-43 of Left Side. Drop loop to be picked up later.
- 14) Attach a separate strand of yarn with sl st in first st of Row 43. Ch 2. Fasten off.
- 15) Pick up dropped loop at end of Row 43. Work Row 44. Ch 8, sl st in first st of Row 44 of Right Side. Fasten off.
- 16) Pick up dropped loop at end of Row 44 on Right Side. Work Rows 45-53. Fasten off.
- 17) With RS facing, attach yarn with sl st in 13th st of Row 16 of Right Side. Work Rows 17-20 of INNER LEG. Fasten off.



Notes:

- 1) Ch 12. Work Rows 1-19 of LEFT LEG. Drop loop from hook to be picked up later.
- 2) Ch 13. Work Rows 1-18 of RIGHT LEG. Drop loop from hook to be picked up later.
- 3) Attach a separate strand of yarn in first st in Row 18 of RIGHT LEG, ch 1. Fasten off.
- 4) Pick up dropped loop at end of Row 18 on RIGHT LEG. Work Row 19. Ch 14, sl st in first st of Row 19 of LEFT LEG. Fasten off.
- 5) Pick up dropped loop at end of Row 19 on LEFT LEG. Work Rows 20-25. Drop loop from hook to be picked up later.
- 6) Attach a separate strand of yarn in first st in Row 25 on Right Side. Ch 1. Fasten off.
- 7) Pick up dropped loop at end of Row 25. Work Rows 26-28.
- 8) Work Rows 29-40 on Right Side. Drop loop on hook to be picked up later.
- 9) Attach a separate strand of yarn in first st in Row 40 of RIGHT LEG, ch 1. Fasten off.
- 10) With RS facing, attach a separate strand of yarn in 11th st in Row 28. Work Rows 29-41. Fasten off.
- 11) Pick up dropped loop at end of Row 40 on Right Side. Work Row 41. Ch 15, sl st in first st of Row 41 of on Left Side. Fasten off.
- 12) Pick up dropped loop at end of Row 41 on Left Side. Work Rows 42-50. Fasten off.

- STITCH KEY**
- = chain (ch)
 - = slip stitch (sl st)
 - ⊥ = single crochet (sc)
 - ⋈ = single crochet 2 together (sc2tog)



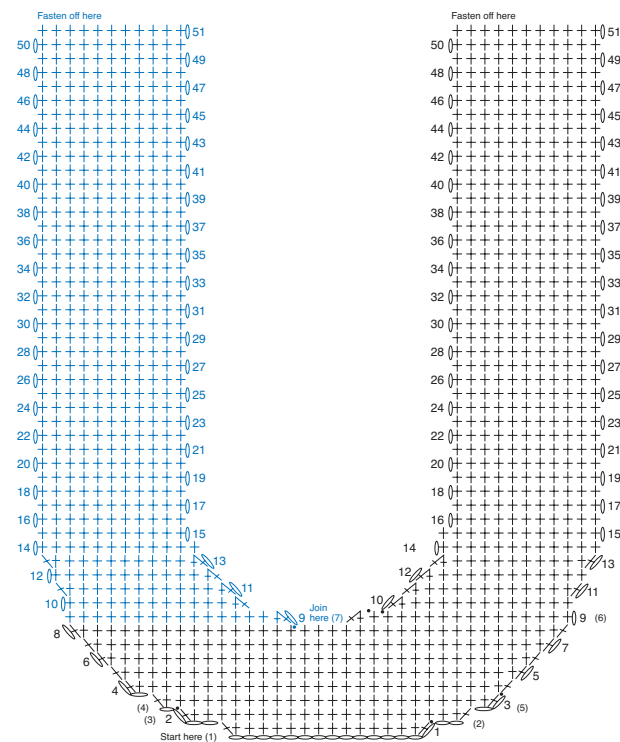
- STITCH KEY**
- = chain (ch)
 - = slip stitch (sl st)
 - + = single crochet (sc)
 - △ = single crochet 2 together (sc2tog)

Notes:

- 1) Ch 15. Work Row 1. Drop loop to be picked up later.
- 2) Attach a separate strand of yarn in first sc of Row 1. Ch 3. Fasten off.
- 3) Pick up dropped loop at end of Row 1. Work Row 2. Drop loop to be picked up later.
- 4) Attach a separate strand of yarn in first sc of Row 2. Ch 2. Fasten off.
- 5) Pick up dropped loop at end of Row 2. Work Row 3. Drop loop to be picked up later.
- 6) Attach a separate strand of yarn in first sc of Row 3. Ch 1. Fasten off.
- 7) Pick up dropped loop at end of Row 3. Work Rows 4-8.
- 8) Work Rows 9-20 of Right Side. Drop loop to be picked up later.
- 9) Attach a separate strand of yarn in first sc of Row 20. Ch 3. Fasten off.
- 10) Pick up dropped loop at end of Row 20. Work Rows 21-22. Drop loop to be picked up later.
- 11) Attach a separate strand of yarn in first sc of Row 22. Ch 4. Fasten off.
- 12) Pick up dropped loop at end of Row 22. Work Rows 23-24. Drop loop to be picked up later.
- 13) Attach a separate strand of yarn in first sc of Row 24. Ch 3. Fasten off.
- 14) Pick up dropped loop at end of Row 24. Work Rows 25-26. Drop loop to be picked up later.
- 15) Attach a separate strand of yarn in first sc of Row 26. Ch 2. Fasten off.
- 16) Pick up dropped loop at end of Row 26. Work Rows 27-43. Drop loop to be picked up later.
- 17) Ch 11. Work Rows 37-44 of Right Side. Drop loop from hook to be picked up later.
- 18) Attach a separate strand of yarn in first sc of Row 43 on Left Side. Ch 1. Fasten off.
- 19) Pick up dropped loop at end of Row 43 on Left Side. Work Row 44. Ch 8, sl st in first st of Row 44 on Right Side. Fasten off.
- 20) Pick up dropped loop at end of Row 44 on Right Side. Work Rows 45-53. Fasten off.

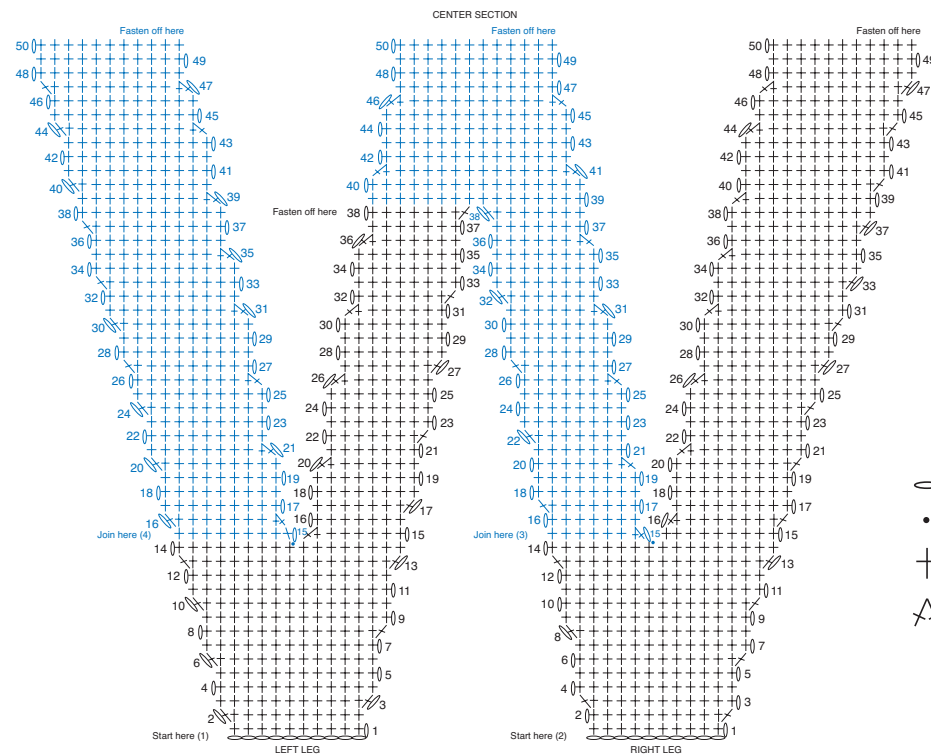
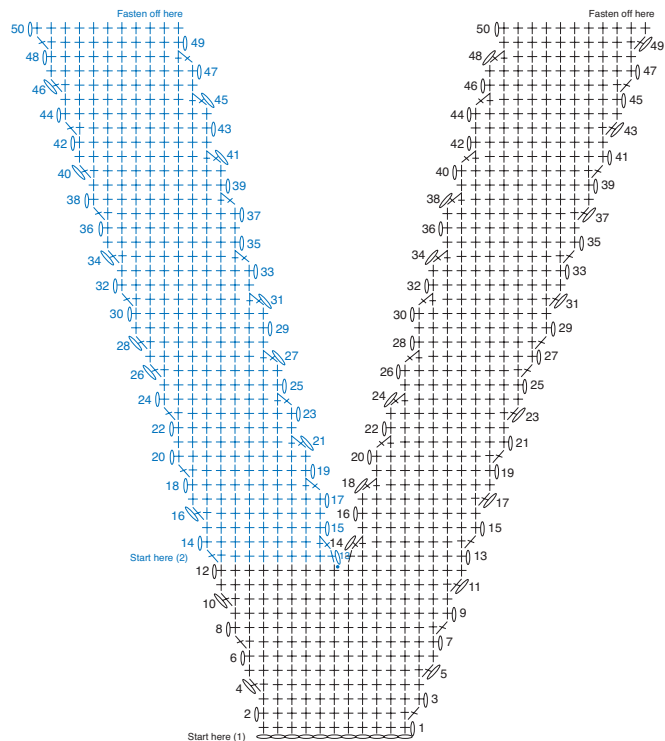
Notes:

- 1) Ch 12. Work Rows 1-41. Drop loop from hook to be picked up later.
- 2) Attach a separate strand of yarn in first st of Row 41. Ch 15. Fasten off.
- 3) Pick up dropped loop at end of Row 41. Ch 16. Work Rows 42-50. Fasten off.



Notes:

- 1) Ch 15. Work Row 1. Drop loop to be picked up later.
- 2) Attach a separate strand of yarn in first sc of Row 1. Ch 2. Fasten off.
- 3) Pick up dropped loop at end of Row 1. Work Row 2. Drop loop to be picked up later.
- 4) Attach a separate strand of yarn in first sc of Row 2. Ch 1. Fasten off.
- 5) Pick up dropped loop at end of Row 2. Work Rows 3-8.
- 6) Work Rows 9-51 of Right Side.
- 7) With RS facing, attach a separate strand of yarn with sl st in 21st st of Row 8. Work Rows 9-51 of Left Side. Fasten off.



STITCH KEY

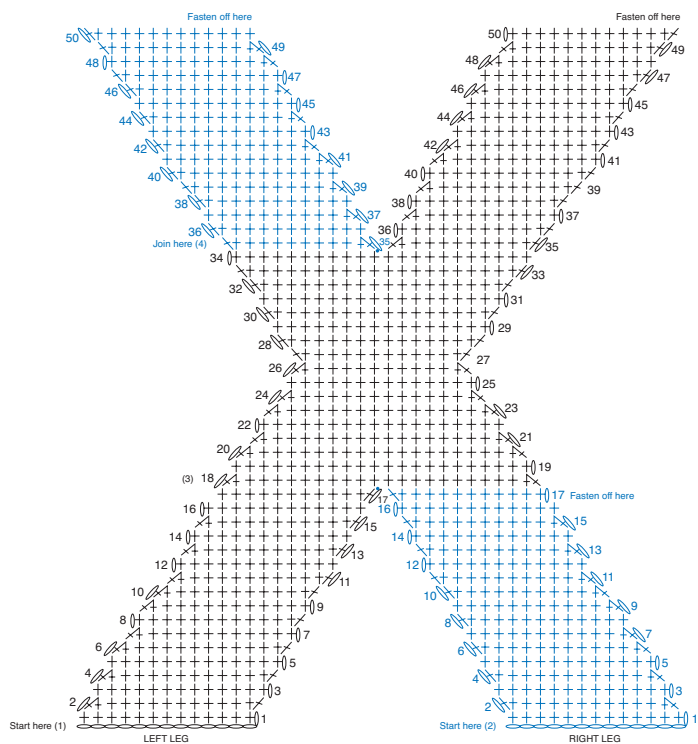
- = chain (ch)
- = slip stitch (sl st)
- ⊕ = single crochet (sc)
- ⋈ = single crochet 2 together (sc2tog)

Notes:

- 1) Ch 12. Work Rows 1-12. Work Rows 13-50 of Right Side.
- 2) With RS facing, join yarn with sl st in 10th st of Row 12. Work Rows 13-50 of Left Side. Fasten off.

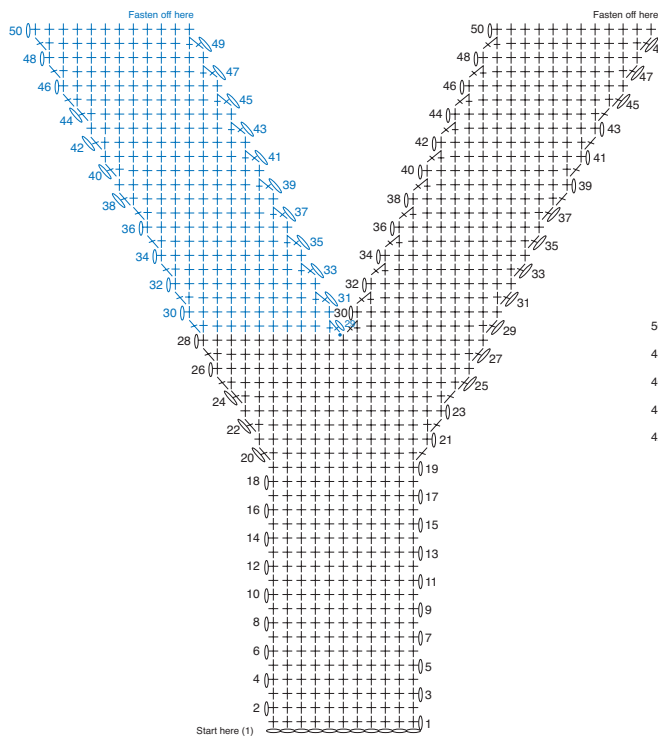
Notes:

- 1) Ch 11. Work Rows 1-14 of LEFT LEG. Work Rows 15-38 on Right Side of LEFT LEG. Fasten off.
- 2) Ch 11. Work Rows 1-14 of RIGHT LEG. Work Rows 15-50 on Right Side of RIGHT LEG. Fasten off.
- 3) With RS of RIGHT LEG facing, join yarn with sl st in 10th st of Row 14. Work Rows 15-38 of Left Side of RIGHT LEG. Work Row 39 across Left Side of RIGHT LEG, then cont to work across Right Side of LEFT LEG (joining Center Section). Work Rows 40-50 of CENTER SECTION. Fasten off.
- 4) With RS of LEFT LEG facing, join yarn with sl st in 9th st of Row 14. Work Rows 15-50 of Left Side of LEFT LEG. Fasten off.



Notes:

- 1) Ch 14. Work Rows 1-17 of LEFT LEG. Drop loop from hook to be picked up later.
- 2) Ch 14. Work Rows 1-17 of RIGHT LEG, then sl st in first st of Row 17 of LEFT LEG. Fasten off.
- 3) Pick up dropped loop at end of Row 17 of LEFT LEG. Work Rows 18-34. Work Rows 35-50 of Right Side. Fasten off.
- 4) With RS facing, join yarn in with sl st in 12th st of Row 34. Work Rows 35-50 of Left Side. Fasten off.

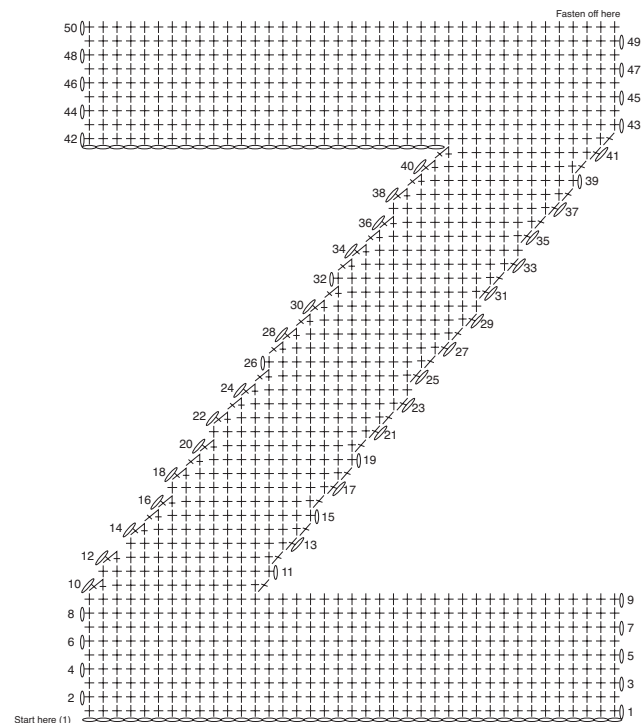


Notes:

- 1) Ch 12. Work Rows 1-28. Work Rows 29-50 on Right Side. Fasten off.
- 2) With RS facing, attach a separate strand of yarn in 11th st of Row 28. Work Rows 29-50 of Left Side. Fasten off.

STITCH KEY

- = chain (ch)
- = slip stitch (sl st)
- † = single crochet (sc)
- △ = single crochet 2 together (sc2tog)



Notes:

- 1) Ch 40. Work Rows 1-50. Fasten off.