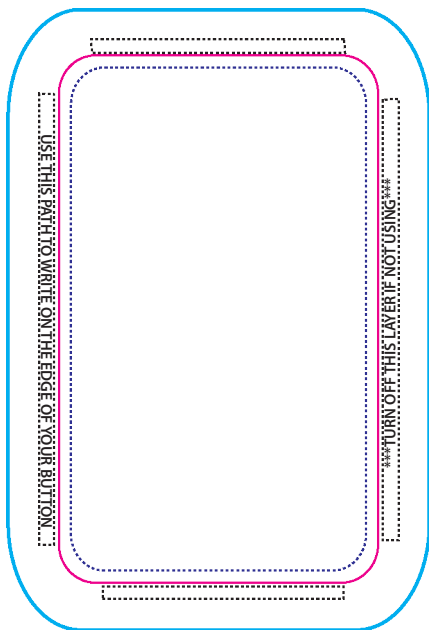


people power press

Custom Button Template

- Create your artwork at 300 dpi in CMYK format.
- Use the "Artwork Layer" for your artwork - do not copy the template into a new file.
- Everything inside the **BUTTON FACE GUIDE LINE** will be on the front of your button.
- Any background colour or pattern must extend to the **CUT LINE** but not past it (no bleed).
- All text **MUST** be outlined or flattened.
- Keep any front text inside the **SAFE AREA** or it may be cut off.
- Text on the edge of the button must fit between the black ———— lines.
- The **CUT LINE** must be completely visible. You can turn off other template layers.
- Send us your artwork as a JPEG, TIFF or PDF or as a PSD or AI File.

FOR FULL INSTRUCTIONS PLEASE SEE THE DESIGN INSTRUCTIONS PDF



1.75"x2.75" OBLONG - Vertical

Please note that on vertical oblong buttons pins run lengthwise (hook at the bottom).