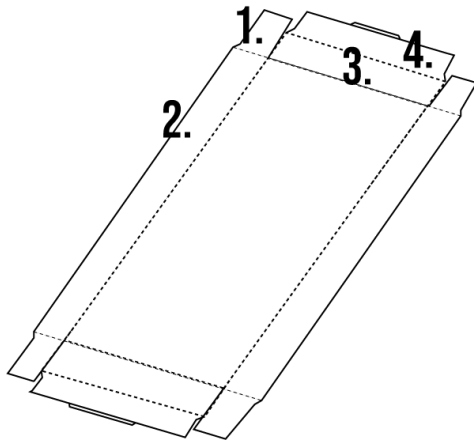


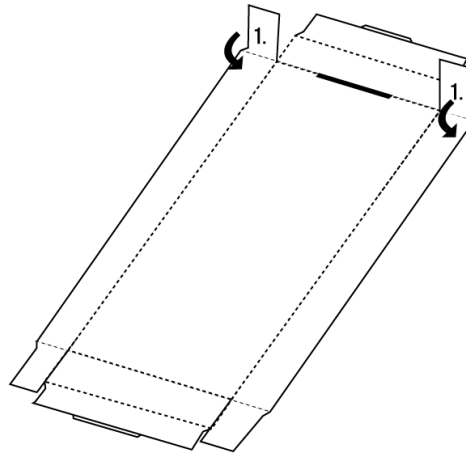
FOLDING INSTRUCTIONS

Archive box - seperate lid

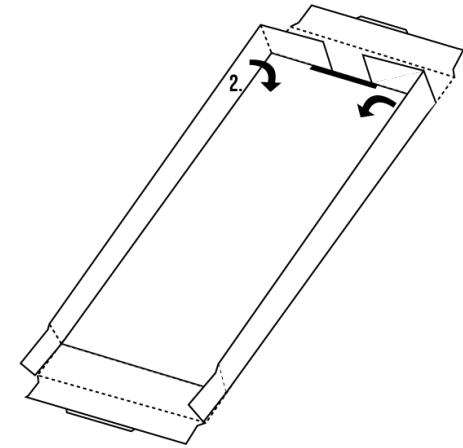
- 1** Starting with the lid. Lay your box out flat. Familiarise yourself with the numbered flaps



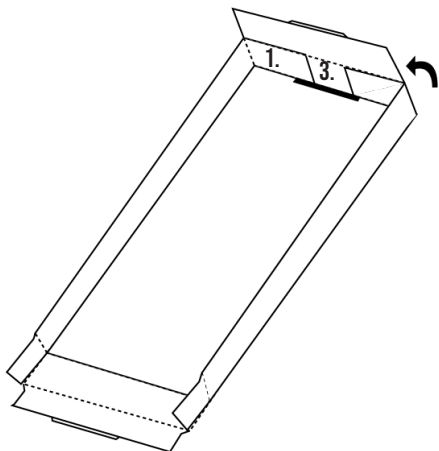
- 2** Fold the flaps marked (1) inward.



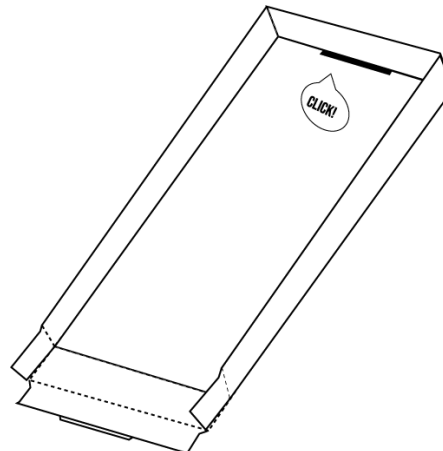
- 3** Fold the long side folds marked (2) inward so fold (1) meets in the centre.



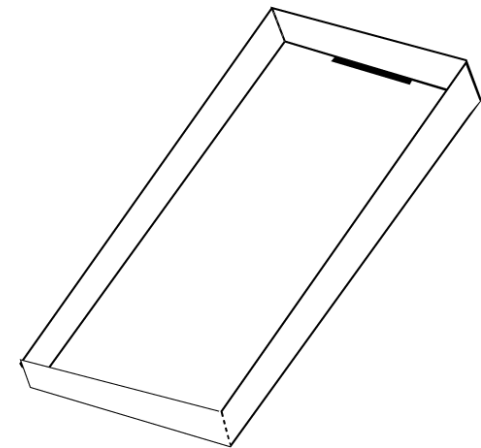
- 4** Take flap (3) and fold it inward so it meets the back of flaps 1.

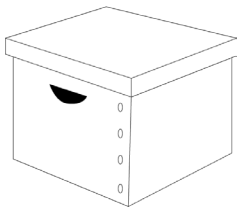


- 5** Fold flap (4) over the top of flaps (1) so that the tab clicks into place



- 6** Complete steps 2 - 6 on the other end of the box to complete the lid.

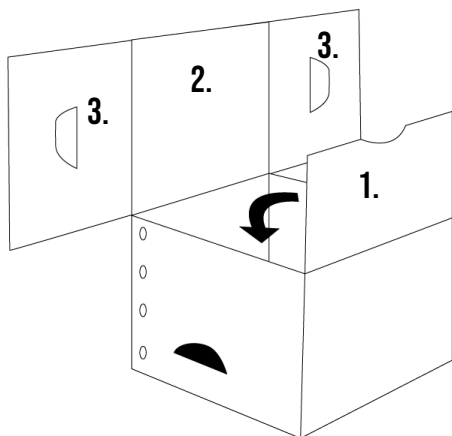




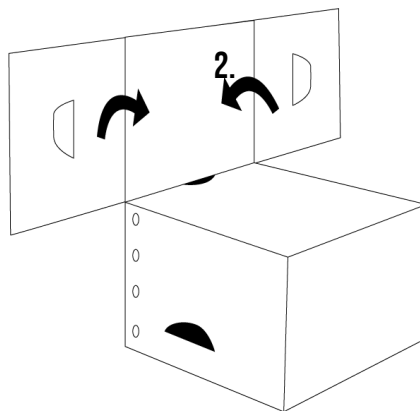
FOLDING INSTRUCTIONS

Archive Box - Seperate Lid

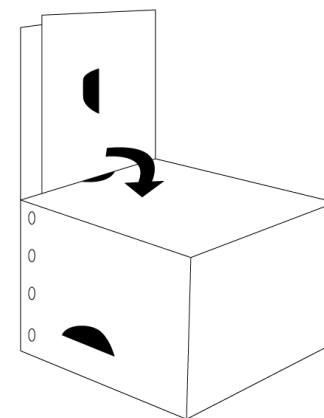
- 7** Take the box flatpack and open it as shown. Fold flap (1) inward, into the box



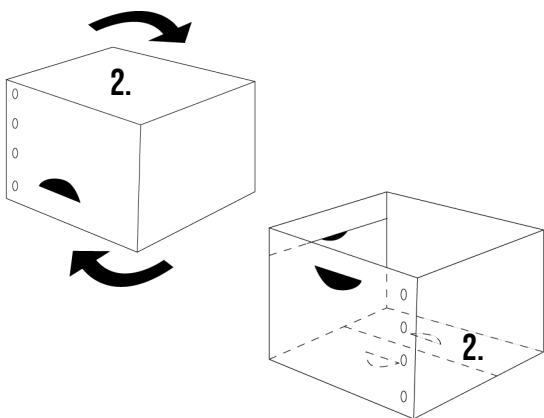
- 8** Fold the side flaps labelled (3) inward so that they meet at the centre of flap (2)



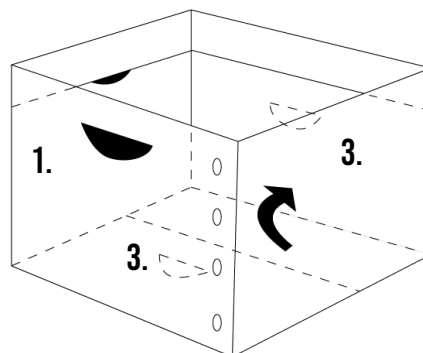
- 9** Push flap (1) against the inside of the box. Then, fold flap (2) down into the box. Make sure flaps (3) are folded in before you push flap (2) down



- 10** Rotate the box so that flap (2) sits on the bottom.



- 11** Keeping flap (1) against the side of the box, reach into the box and pull up flaps (3) so that they align with the handles on the box.



- 12** With flaps (3) in place at each side. Push flap (1) down so that it sits at the bottom of the box. Attach the lid and your box is done!

