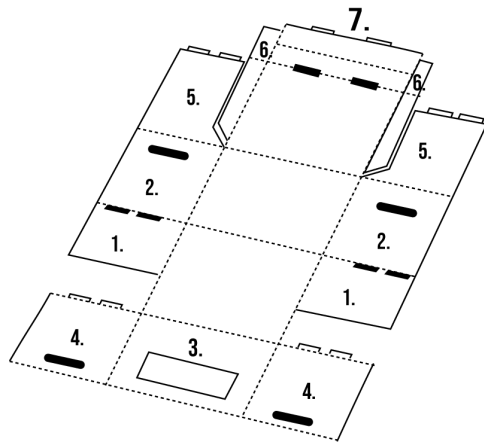


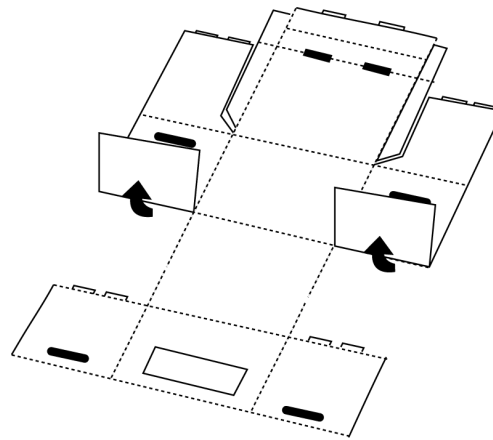
FOLDING INSTRUCTIONS

Lever Arch File Archive Box

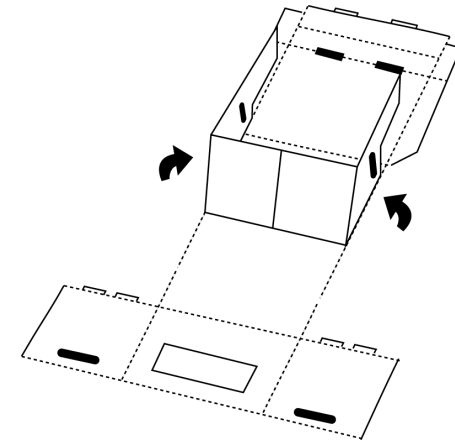
1 Starting with the lid. Lay your box out flat. Familiarise yourself with the numbered flaps



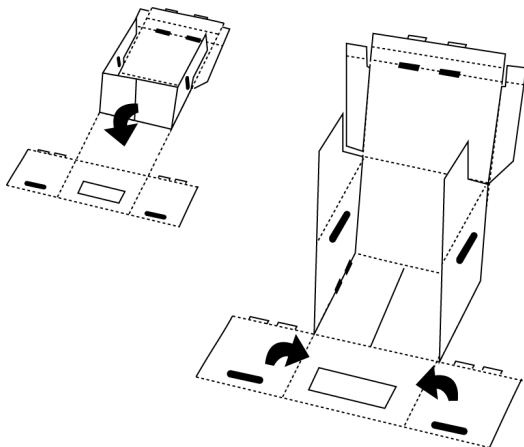
2 Fold the flaps marked (1) inward.



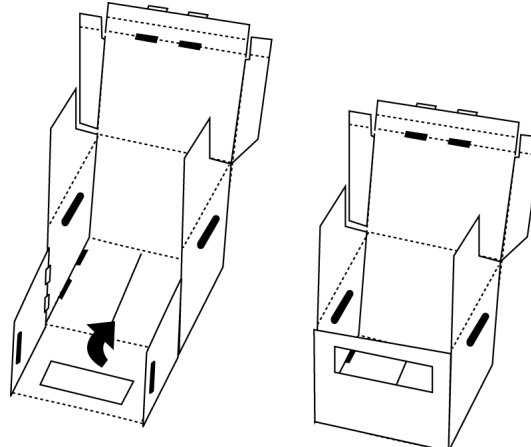
3 Fold the long side folds marked (2) inward so fold (1) meets in the centre.



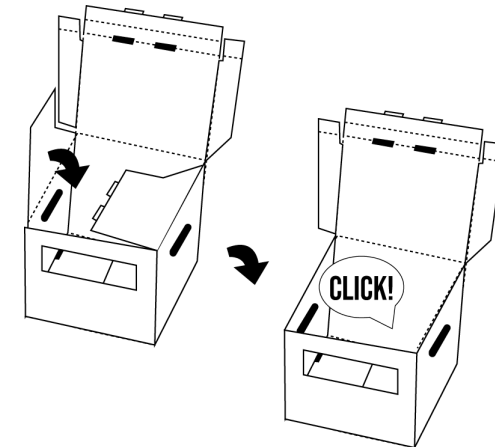
4 Fold the upper half of the box inward so that the box is standing. Fold the flaps marked (4) inward.

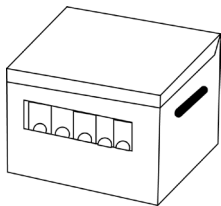


5 With flap (4) folded at a right angle, fold flap (3) inward. The tabs on flap (4) will align with the grooves located on flap (1).



6 Fold the flaps marked (5) over the tops of flaps (4) until they click into the grooves at the bottom of the box.

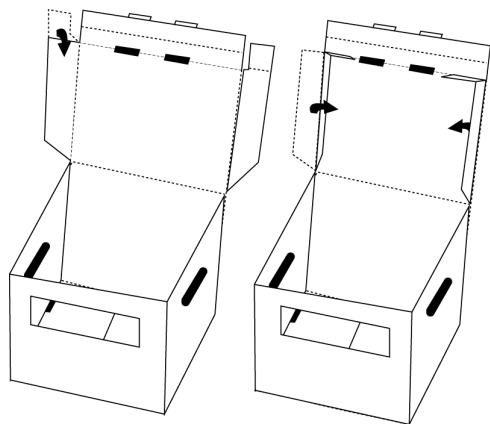




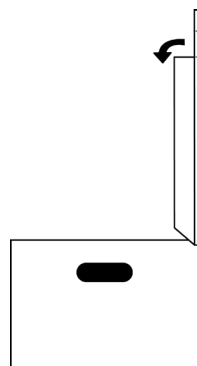
FOLDING INSTRUCTIONS

Lever Arch File Archive Box

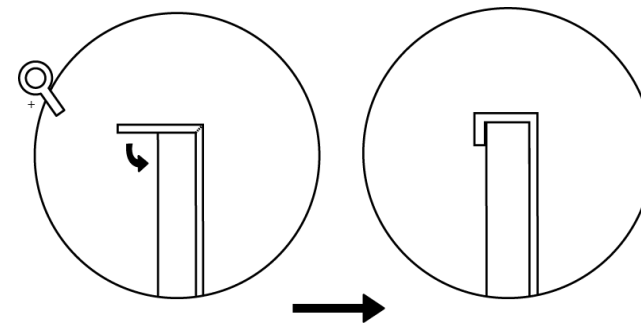
7 Take the flap marked (6) and fold the top of it downward to a right angle. Then take the whole flap and fold inward.



8 Take flap (7) and fold it down over the top flap (6).



9 Make sure the tabs on flap 6 fit into the grooves on the lid of the box.



10 Shut the lid and give yourself a round of applause, your box is complete

