



Client:

National Hemp Service

Product:

2.5% CBD Oil

Product code:

NHS-2.5PC

Description:

CBD whole plant extract and broad spectrum extract with organic hemp seed oil and pineapple chunk terpene profile

Batch number:

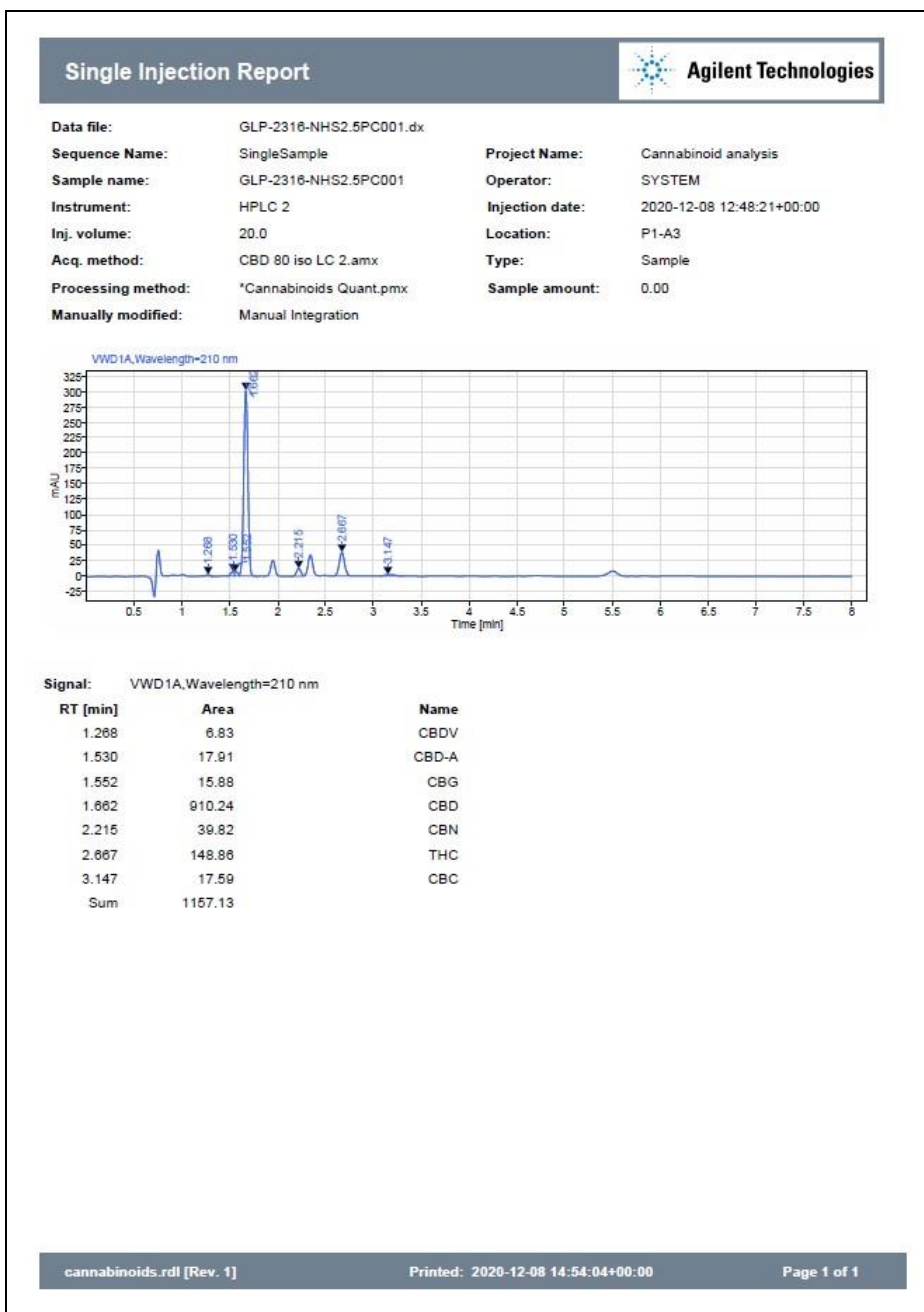
NHS-2.5PC-001

Method:

Reverse phase HPLC/UV

Assay date:

8th December 2020



Assay #	% CBDV	% CBD-A	% CBG-A	% CBG	% CBD	% THCV	% CBN	% THC	% CBC	% THC-A
GA2539	0.023	0.119	ND	0.043	2.562	ND	0.144	0.052	0.135	ND

Potential Total % CBD	Potential Total % THC	Total % Cannabinoids
2.667	0.052	3.079

Analysis by M V Jefferson

Checked and Authorised by Z R T Stone

Date: 8th December 2020