



---

**Sample Information**

---

**Client:** National Hemp Service

**Product:** 20% CBD Oil

**Product Code:** NHS-20PC

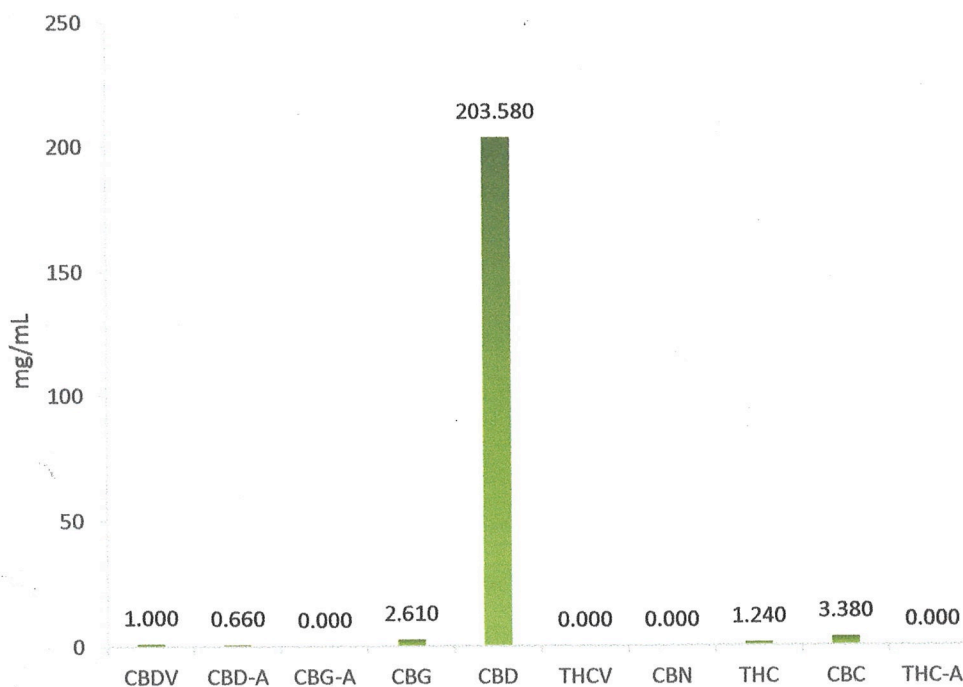
**Description:** CBD whole plant extract and broad spectrum extract with organic hemp seed oil and pineapple chunk terpene profile

**Batch Code:** NHS-20PC-008

**Method:** Reverse Phase HPLC/UV

**Assay Date:** 1<sup>st</sup> September 2021

---



Assay #	% CBDV	% CBD-A	% CBG-A	% CBG	% CBD	% THCV	% CBN	% THC	% CBC	% THC-A
GA3154	0.100	0.066	ND	0.261	20.358	ND	ND	0.124	0.338	ND

Potential Total % CBD	Potential Total % THC	Total % Cannabinoids
<b>20.417</b>	<b>0.124</b>	<b>21.248</b>

Analysis by M V Jefferson

Checked and Authorised by Z R T Stone

Date: 1<sup>st</sup> September 2021