



**Sample Information**

**Client:** National Hemp Service

**Product:** 10% CBD Oil

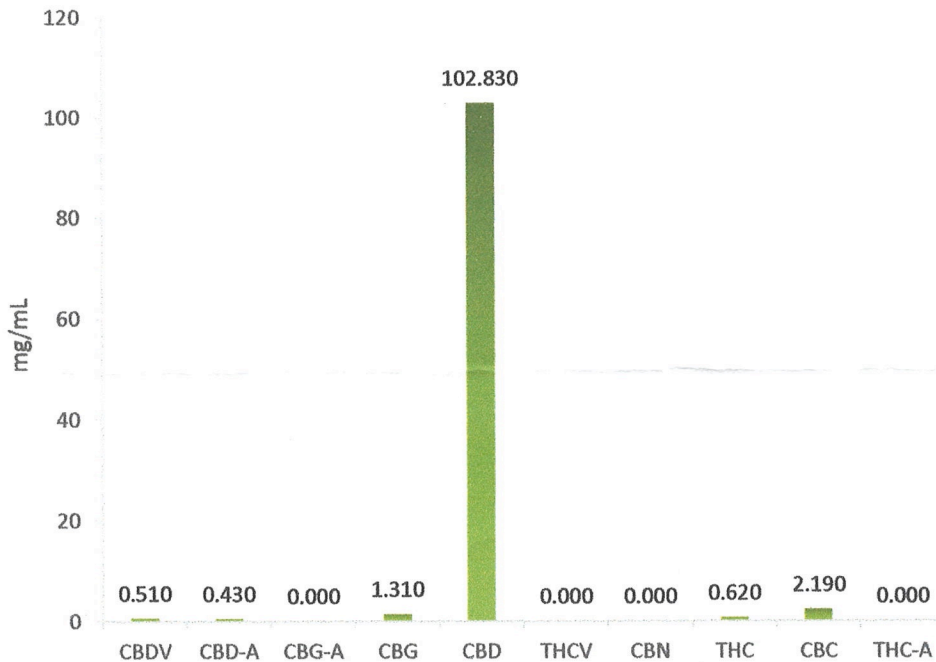
**Product Code:** NHS-10PC

**Description:** CBD whole plant extract and broad spectrum extract with organic hemp seed oil and pineapple chunk terpene profile

**Batch Code:** NHS-10PC-010

**Method:** Reverse Phase HPLC/UV

**Assay Date:** 13<sup>th</sup> August 2021



Assay #	% CBDV	% CBD-A	% CBG-A	% CBG	% CBD	% THCV	% CBN	% THC	% CBC	% THC-A
GA3115	0.051	0.043	ND	0.131	10.283	ND	ND	0.062	0.219	ND

Potential Total % CBD	Potential Total % THC	Total % Cannabinoids
<b>10.321</b>	<b>0.062</b>	<b>10.790</b>

Analysis by M V Jefferson

Checked and Authorised by Z R T Stone

Date: 13<sup>th</sup> August 2021