

**Get started**



**Download the  
LIFX app to begin.**



# I'm not reading this whole thing

We get it—Don't worry, these are the basics...

1. Turn on your LIFX light
2. Download and login to the LIFX app
3. Press the + button to add your product.



2.4 GHz

Technical Stuff:

You'll need a device running **iOS 14.0+** or **Android 8.0+** and a 2.4 GHz **Wi-Fi internet connection**.

Not sure what that is? See the page 'Your Wi-Fi'.

How do I turn it on?

**Connect all the pieces  
in this kit together  
securely then plug it  
into your power outlet.**

Be safe! Make sure you read  
the caution notes.



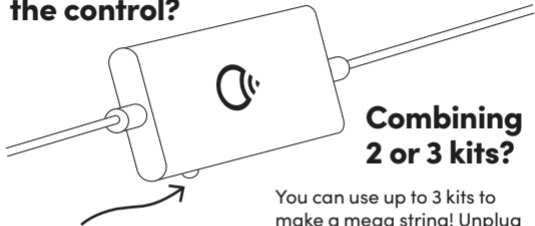
Prefer to watch videos?  
Text here annoyingly small?



SCAN FOR  
SETUP VIDEOS,  
INSPIRATION  
PICS, DIGITAL  
MANUALS &  
MORE...



## Did you connect your string *after* powering the control?



## Combining 2 or 3 kits?

Press the button on the control in for 2 seconds. This tells the string there are pieces to 'count'. A light will run down the full length of the string as it detects and counts all connected pieces.

You can use up to 3 kits to make a mega string! Unplug the power, unscrew the end cap on each string then connect together. Tighten the connector caps to ensure it's secure and watertight. When powered, press the controller button to re-count the pieces.

**NOT SURE? SCAN THE QR CODE ON PREVIOUS PAGE FOR MORE DETAIL**

# Cautions:

## READ AND FOLLOW ALL SAFETY INSTRUCTIONS

- Connect this product to a Ground Fault Circuit Interrupting (GFCI) outlet. If one is not provided, contact a qualified electrician for proper installation.
- Do not mount or place near gas or electric heaters, fireplace, candles, or other similar sources of heat.
- Do not secure the wiring of the product with staples or nails, or place on sharp hooks or nails.
- Do not use this product for other than its intended use.
- Do not hang ornaments or other objects from the cord, wire, or lamps.
- Do not close doors or windows on the product or extension cords as this may damage the wire insulation.
- Do not cover the product with cloth, paper or any material not part of the product when in use.
- This product has a polarized plug (one blade is wider than the other) as a feature to reduce the risk of electric shock. This plug will fit in a polarized outlet only one way. If the plug does not fit fully in the outlet, reverse the plug. If it still does not fit, consult a qualified electrician. Do not use with


an extension cord unless the plug can be fully inserted. Do not alter or replace the plug.

- Keep lamps away from any combustible surface.
- Read and follow all instructions that are on the product or provided with the product.
- This product should be installed out of the reach of children.
- Do not secure String Lights to buildings or other structural supports using nails, staples or other sharp, conducting materials.
- DO NOT DAMAGE THE WIRE.


## Warning:

1. To avoid risk of shock, always make sure the product is unplugged from the electrical outlet before assembling, disassembling, installing, relocating, servicing or cleaning it.
2. Do not overload. Do not connect more than 72' of LIFX String Lights.
3. Do not use with extension cord near water or where water may accumulate. Keep at least 4.8 m / 16 ft from pools and spas. Keep plugs and receptacles dry.
4. Do not submerge.

# Setting up using Apple Home™ on iOS?

1. Power on your LIFX light
2. Open the Apple Home App 
3. Use the camera on your iOS device to scan the HomeKit QR code on the back of this manual.

OR

Open the Apple Home App and click  or “add accessory”.

Keep your user manual for the HomeKit QR code in the future.

Apple, Apple Home, Apple Watch, HomeKit, HomePod, HomePod mini, iPad, iPad Air, iPhone, and tvOS are trademarks of Apple Inc., registered in the U.S. and other countries and regions.

#### Technical Requirements:

To control this HomeKit-enabled accessory, the latest version of iOS or iPadOS is recommended. An internet / data connection is required while setting up Apple HomeKit as you will need to connect your LIFX product to your Wi-Fi access point / router. Controlling this HomeKit-enabled accessory automatically and away from home requires a HomePod, HomePod mini, or Apple TV set up as a home hub. It is recommended that you update to the latest software and operating system.

Use of the Works with Apple badge means that an accessory has been designed to work specifically with the technology identified in the badge and has been certified by the developer to meet Apple performance standards. Apple is not responsible for the operation of this device or its compliance with safety and regulatory standards.

**With Apple HomeKit technology, you can control your home's lighting, locks, and more from your iPhone®, iPad®, HomePod mini®, Apple Watch®, or Mac®.**

## Your Wi-Fi:

|        |              |                          |
|--------|--------------|--------------------------|
| Router | 802.11 b/g/n | WPA2 security compatible |
|--------|--------------|--------------------------|

LIFX lights connect to your 2.4 Ghz Wi-Fi frequency network, which all routers can be set up for. This offers better range and stability for devices. You may also have a 5 Ghz connection, so if you're not sure which is which, check the current Wi-Fi you're connected to by pressing the Wi-Fi icon on your phone while connected and look at the listed details to find the frequency.

### Connection troubles?

Wi-Fi waves can be interrupted by materials like concrete or mirrors. If your signal is weak, try moving your product near your router for setup as it will need a stable connection to complete. If you have lots of devices connected to your router, check the recommended amount. Some routers can handle many devices, others can only support a few.



# Quick FAQs

## **How do I reset a light if I need to?**

To take a light back to its original settings, turn it off and on at the switch 5 times, at a rate of about one switch a second (not too fast). The lights will cycle through four colors and stop on white when the reset has been successful. This is how you would remove a light from a network to then add it to a new one.

## **I've set up a new network / changed my password, how do I re-connect my lights ?**

If you've changed your Wi-Fi password or set up a new router with a new password, you'll need to reset your lights (as above) and reconnect them with the new Wi-Fi information and security. If you've moved house but your network is named the same and has the same password, your lights are all ready to go!

**Need more help?**

Visit the LIFX Help Center at [support.lifx.com](https://support.lifx.com)

# Regulations & Compliance.

## FCC Compliance Statement U.S.

This equipment has been tested and found to comply with the limits for a Class B digital device, under Part 15 of the FCC Rules. These limits provide reasonable protection against harmful interference in a residential installation. This equipment generates, uses and can radiate radio frequency energy and, if not installed and used under the instructions, may interfere with radio or television reception, which can be determined by turning the equipment off and on. The user is encouraged to correct the interference by one or more of the following measures:

- Reorient or relocate the receiving antenna
- Increase the separation between the equipment and the receiver
- Connect the equipment into an outlet on a circuit different from that to which the receiver is connected
- Consult the dealer or an experienced radio/TV technician for help

Changes or modifications not approved by LIFX can void the user's authority to operate the equipment.

This device complies with Part 15 of the FCC Rules. Operation is subject to the following two conditions: (1) This device may not cause harmful interference, and (2) this device must accept any interference received, including interference that may cause undesired operation.

Contains FCC ID: 2AA53-LCM3

## Changes & modification

Changes or modifications made to this device may void certification of the device. Changes or modifications made to this unit not expressly approved by the party responsible for compliance could void the user's authority to operate the equipment.

## Frequency Information

*Frequency Range (US & Canada): 2 412-2462 MHz;*

*Maximum radio-frequency power transmitted: 18.75 dBm;*

*Modulation type : IEEE 802.11 b/g/n20*

## Installation requirements & recommendation

This device should only be installed in light fittings and fixtures that are designed to accept each fitting. Lamps, fittings and fixtures that are designed to accept smaller or lower wattage light bulbs may result in the LIFX bulb operating

below its optimal capacity. For optimal performance it is recommended that LIFX bulbs be fitted into fixtures that provide sufficient air flow through and around the bulb. It is recommended that the LIFX bulb be installed away from other devices designed to receive or transmit radio signals. It is recommended LIFX bulb/s be installed and operated at a minimum distance of 30 cm from the body. For lamps with a weight significantly higher than that of lamps for which they are a replacement, attention should be drawn to the fact that the increased weight may reduce the mechanical stability of certain luminaires and may impair contact making and lamp retention.

## Interference

LIFX has been designed to minimise interference with other radio, broadcast or receiving devices. The manufacturer is not responsible for any interference caused as a result of modifications to the product or by failure to adhere to the recommendations in this document and at [support.lifx.com](http://support.lifx.com). This device generates radio frequency energy and, if not installed in accordance with the "recommended installation requirements" may cause harmful interference to radio communication devices. If the device is causing radio interference it is recommended that the user try:

a. relocating the device to a different place;

- b. adjust the antenna on the receiving device;
- c. consult a technician experienced in radio interference.

## Notices

- This device is not intended for use with emergency exits
- Only use the control provided with or specified by these instructions to control this lamp. This lamp will not operate properly when connected to a standard (incandescent) dimmer or dimming control.

**LIFX is not designed for use in:**

- Excessively hot environments (e.g. close to ovens, radiators, heaters, etc.)
- Regions or countries other than that in which the product was intended for
- Outdoor and wet areas, except where the LIFX Product specifies that it is for both Indoor and Outdoor use.

## When using LIFX

- To avoid risk of shock, always make sure the product is unplugged from the electrical outlet before assembling, disassembling, installing, relocating, servicing or cleaning it.
- Do not open device, as this will void the warranty
- If cleaning the product, use a soft dry cloth, do not use cleaning agents

## Limited Warranty

## **General**

Feit Electric Co ("LIFX") warrants the LIFX bulb (the "Product"), and only the Product, against defects in materials and workmanship under normal use ("Defect") for a period of TWO YEARS (730 days) from the date of retail purchase by the original purchaser ("Warranty Period"). Under this Limited Warranty, if a defect arises and a valid claim is received by LIFX within the Warranty Period, at its option and to the extent permitted by law, LIFX will either: 1. repair the Product at no charge, using new or refurbished replacement parts --or-- 2. exchange the Product with a new or refurbished Product.

In the event of a defect, to the extent permitted by law, these are your sole and exclusive remedies. A replacement Product or part assumes the remaining warranty of the original Product or ninety (90) days from the date of replacement or repair, whichever is longer. When a Product or part of the Product is exchanged, any replacement item becomes your property and the replaced item becomes LIFX's property. Parts provided by LIFX in fulfillment of its warranty obligation must be used in Products for which warranty service is claimed.

## **Exclusions & Limitations**

This Limited Warranty applies only to

the Product manufactured by or for LIFX that can be identified by the LIFX trademark, trade name, or logo affixed to it. The Limited Warranty does not apply to any (a) LIFX products and services other than the Product, (b) non-LIFX hardware product, (c) consumables (such as batteries), or (d) software, even if packaged or sold with the Product or embedded in the Product. Refer to the licenses accompanying the software for details of your rights with respect to its use. LIFX does not warrant that the operation of the Product will meet your needs or requirements or be uninterrupted or error free. LIFX is not responsible for damage arising from failure to follow instructions relating to the Product's use or from failures resulting from inadequate electrical supply or internet access. This warranty does not apply to a Product or part of the Product that has been altered or modified (e.g. to alter functionality or capability) by anyone who is not a representative of LIFX or if the Product is inserted or installed in a casing not provided by LIFX. In addition, this Limited Warranty does not apply to Defects or damage caused by (a) use with non-LIFX products; (b) accident, abuse, misuse, flood, fire, earthquake or other external causes or abnormal conditions; (c) operating the product outside the permitted or intended uses or conditions described by LIFX or with

improper voltage or power supply; or (d) service (including upgrades and expansions) performed by anyone who is not a representative of LIFX. Recovery and reinstallation of software programs and user data are not covered under this Limited Warranty. This Limited Warranty does not cover the cost of returning the Product to LIFX; this is your responsibility. No LIFX reseller, agent, or employee is authorized to make any modification, extension, or addition to this Limited Warranty. If any term is held to be illegal or unenforceable, the legality or enforceability of the remaining terms shall not be affected or impaired.

#### **EXCLUSIVE WARRANTIES**

THE WARRANTIES SET FORTH HEREIN ARE THE EXCLUSIVE WARRANTIES PROVIDED BY LIFX, AND EXCEPT TO THE EXTENT PROHIBITED BY APPLICABLE LAW, ALL OTHER WARRANTIES, WHETHER EXPRESS OR IMPLIED WARRANTIES (INCLUDING WARRANTIES OF MERCHANTABILITY, FITNESS FOR A PARTICULAR PURPOSE AND NON INFRINGEMENT) ARE HEREBY EXCLUDED.

#### **LIMITATION OF DAMAGES**

EXCEPT TO THE EXTENT PROHIBITED BY APPLICABLE LAW, LIFX SHALL NOT BE LIABLE FOR ANY INCIDENTAL, INDIRECT, SPECIAL, OR CONSEQUENTIAL DAMAGES RESULTING FROM ANY USE OF THE PRODUCT OR BREACH OF EXPRESS OR

IMPLIED WARRANTY OR CONDITION, OR UNDER ANY OTHER LEGAL THEORY. LIFX'S LIABILITY FOR DAMAGES RESULTING FROM ANY USE OF THE PRODUCT OR BREACH OF EXPRESS OR IMPLIED WARRANTY OR CONDITION, OR UNDER ANY OTHER LEGAL THEORY WILL BE LIMITED TO THE ORIGINAL COST PAID FOR OF THE DEFECTIVE PRODUCT.

#### **Consumer Protection**

Some states do not allow the exclusion or limitation of incidental or consequential damages, or allow limitations on how long an implied warranty lasts, so the above limitations or exclusions may not apply to you. This warranty gives you specific legal rights, and you may also have other rights that vary by state to state.

#### **Governing Law and Arbitration**

This Limited Warranty shall be governed by the laws of the State of California without giving effect to any conflict of laws principles that may provide the application of the law of another jurisdiction and without regard to the Convention on Contracts for the International Sale of Goods. Any claim or dispute in connection with this Limited Warranty shall be resolved in a cost effective manner through binding non appearance based arbitration. The arbitration shall be initiated through an established alternative dispute resolution provider mutually agreed upon by the

parties. The alternative dispute resolution provider and the parties must comply with the following rules: a) the arbitration shall be conducted by telephone, online and/ or be solely based on written submissions, the specific manner shall be chosen by the party initiating the arbitration; b) the arbitration shall not involve any personal appearance by the parties or witnesses unless otherwise mutually agreed by the parties; and c) any judgement on the award rendered by the arbitrator may be entered in any court of competent jurisdiction. If the foregoing arbitration clause does not apply for any reason, you agree to submit to the personal jurisdiction of the state courts located within San Francisco County, California and the federal courts in the Northern District of California for the purpose of litigating all such claims or disputes, which courts shall have exclusive jurisdiction of such claims or disputes. Notwithstanding the foregoing, LIFX may seek injunctive or other equitable relief to protect its intellectual property rights in any court of competent jurisdiction.

FEIT ELECTRIC CO. is the exclusive owner of rights and interests in and to the mark LIFX and the LIFX logo.  
**Covered by patents.**  
[lifx.com/patents](https://lifx.com/patents)

© 2023  
All rights reserved.

For more information visit [lifx.com](https://lifx.com)

# Product Details

## Chromaticity co-ordinates: coloured light

$x < 0,270$  or  $x > 0,530$

$y < -2,3172 x^2 + 2,3653 x - 0,2199$

or  $y > -2,3172 x^2 + 2,3653 x - 0,1595$

## Product Dimensions (LxWxH)

12x 1.4 x 1.4 x 2.3  
inch bulbs on a  
24 foot cable.



Minimum starting  
temperature.



Reaches 100% brightness  
in 1 second or less.



High quality LEDs rated  
for 25,000 hours of use.



Connects to your routers  
2.4GHz Wi-Fi band.

Wi-Fi 802.11 b/g/n  
100-240V 50/60Hz





This is your  
Apple HomeKit  
QR code.



LIFX works diligently to ensure that LIFX products and their packaging materials comply with all relevant regulations in the regions we supply. We will also provide on request information regarding compliance if it is not immediately available at the link below.

**See [lifx.com/compliance](https://lifx.com/compliance) for notices for your region.**