

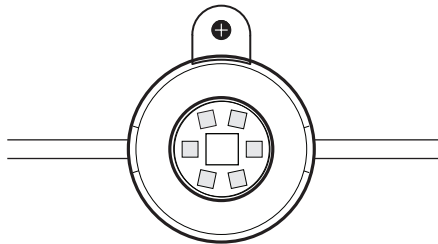
Get started

**Download the
LIFX app to begin.**



Safety Instructions + Installation Guide

**LIFX Permanent
Outdoor Light**



**Extension
Pieces**



Need any help?

We've got tips & articles at support.lifx.com or
you can chat with us live at [LIFX.com](https://lifx.com)



**Connects to
your existing
LIFX Permanent
Outdoor Lights**

Installing your Outdoor Lights.



Cautions:

WARNING: When using outdoor portable luminaires, basic safety precautions should always be followed to reduce the risk of fire, electric shock, and personal injury, including the following cautions—

- a. Ground Fault Circuit Interrupter (GFCI) protection is to be provided on the circuit(s) or outlet(s) to be used for the wet location portable luminaire. Receptacles are available having built-in GFCI protection and are able to be used for this measure of safety.
- b. Do not mount or place near gas or electric heaters, fireplace, candles, or other similar sources of heat.
- c. Do not secure the wiring of the product with staples, nails, or place on sharp hooks. Install only using the mounting means provided.
- d. Do not let lights rest on the supply cord or on any wire.
- e. Do not use this product for other than its intended use.
- f. Do not hang ornaments or other objects from the cord, wire, or lights.
- g. Do not close doors or windows on the product or extension cords as this may damage the wire insulation.
- h. When in use, do not cover the product with cloth, paper, or any material that is not part of the product.
- i. Keep lights away from any combustible surface.
- j. Read and follow all instructions that are on the product or provided with the product.
- k. This product should be installed out of the reach of children.
- l. Do not secure string lights to buildings or other structural supports using nails, staples or other sharp, conducting materials. **DO NOT DAMAGE THE WIRE.**
- m. Do not submerge.

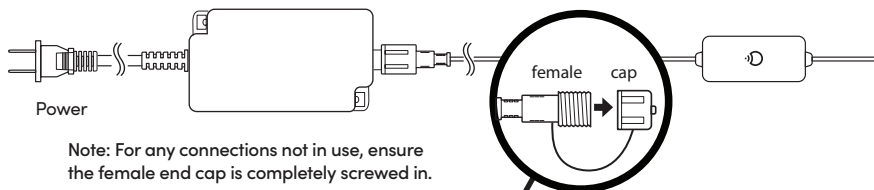
KEEP THESE INSTRUCTIONS

1. **To avoid risk of shock**, always make sure the product is unplugged from the electrical outlet before assembling, disassembling, installing, relocating, servicing or cleaning it.
2. **Do not overload.** These strings of lights are in 25-foot sections, each using up to 20W. Extend to a total of 200 ft (8 sections). Overall brightness automatically reduces above 150ft. Any lights beyond 200ft will not light up.
3. **Do not use** with extension cord **near water** or where water may accumulate. Keep at least 4.8 m / 25 ft from pools and spas. Keep plugs and receptacles dry. Do not submerge.
4. Do not exceed the lowest of the indicated maximum wattage on the cord tag near the connected product's receptacle.
5. **TO REDUCE THE RISK OF FIRE:** Do not replace the attachment plug. It contains a safety device (fuse) that should not be removed. Discard product if the attachment plug is damaged.

1

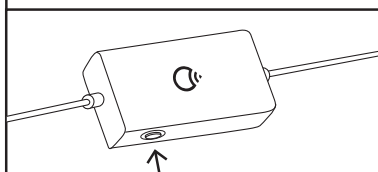
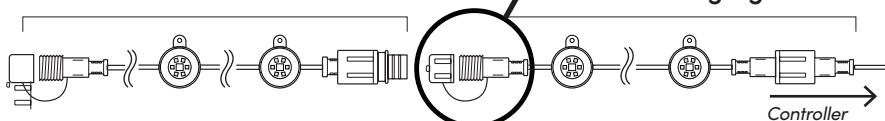
CONNECT ALL PIECES

Undo the cap at the end of the last string of lights to allow you to connect additional pieces to your LIFX Outdoor Permanent light set.



Extension Piece 25ft / 7.5m

Existing Lights



After you've added your extension pieces, press the button on the control in for 2-3 seconds, until it reacts.

A light will run the full length of the string as it detects and counts the connected pieces.

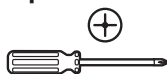
To reset the light to factory settings, press the button for 5-7 seconds.

2

INSTALL

Planning a Permanent setup?

Grab your Phillips Screwdriver...

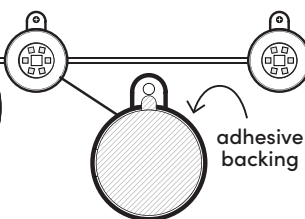


Measure up the space for your install and mark out where each light will sit. You can use chalk or pieces of masking tape to get an idea where the lights will fall. Use the peel and stick backing to tack up the lights, then use the screws provided to securely mount.

Note: Don't overtighten the screw.

It is recommended to mount using both mounting tape and mounting screws.

Setting up short-term?



Simply clean the surface, peel the adhesive backs and stick! Press and hold each light for at least 60 seconds

Note: This adhesive may cause surface damage if removed. It is not recommended for mounting on brick or concrete and a preferred install is to use both the adhesive and screws.

Product Details



Minimum starting temperature.



Reaches 100% brightness in 3 seconds or less.



High quality LEDs rated for 55,000 hours of use.

Wi-Fi 802.11 b/g/n/ax
36V DC Input

Chromaticity co-ordinates: colored light

$$x < 0,270 \text{ or } x > 0,530$$
$$y < - 2,3172 \text{ } x^2 + 2,3653 \text{ } x - 0,2199$$
$$\text{or } y > - 2,3172 \text{ } x^2 + 2,3653 \text{ } x - 0,1595$$



© 2024 All rights reserved.
Covered by patents.
lifx.com/patents

FEIT ELECTRIC CO. is the exclusive owner of rights and interests in and to the mark LIFX and the LIFX logo.

LIFX works diligently to ensure that LIFX products and their packaging materials comply with all relevant regulations in the regions we supply. See lifx.com/compliance for notices for your region.