

*eva* PROFESSIONAL  
HAIR CARE

---

# SUPERBLANC

---

The Smart Hair Bleaching Range

# Hair bleaching with neutralisation action.



## SUPERBLANC .BLUE

Blue bleaching powder  
Anti-Orange  
Up to 7 levels  
Compact, dust-free formula

Speed: >>>>



## SUPERBLANC .VIOLET

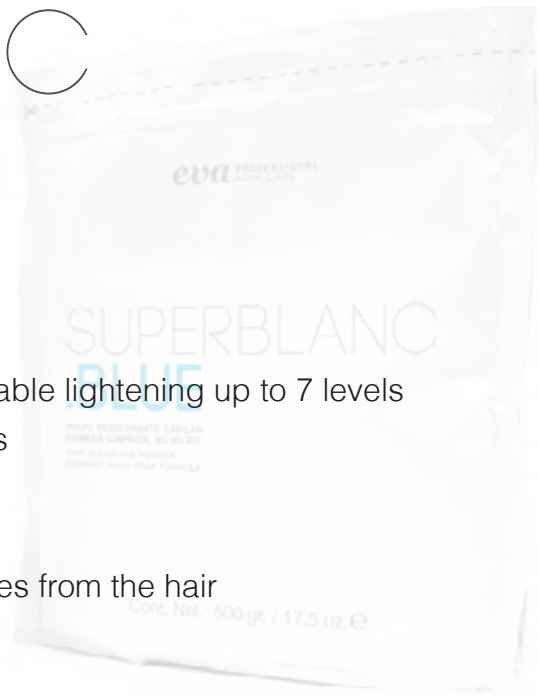
Violet bleaching powder  
Anti-Yellow  
Up to 9 levels  
Compact, dust-free formula

Speed: >>>>

# SUPERBLANC .BLUE

Up to 7 levels of lightening

- Fine smooth consistency
- Progressive lightener for controlled and reliable lightening up to 7 levels
- Ideal for highlighting and scalp applications
- For natural and previously coloured hair
- Gentle on the hair and scalp
- Blue pigment neutralises yellow/orange tones from the hair
- No swell and dust free formula



# SUPERBLANC .VIOLET

Up to 9 levels of lightening

- Thicker smooth consistency
- Active bleach - faster lightening power up to 9 levels of lift
- Perfect for freehand techniques, balayage, highlighting and scalp applications
- Suitable for use without foil, meche or wrap
- Gentle on the hair and scalp
- Violet pigment neutralises yellow tones from the hair
- No swell formula and dust free formula




# Perfect your technique.

## APPLICATION AND DEVELOPMENT TIME

**How to use:** The mixture oxidizer proportion is always measured:

**COLORED HAIR: 20 Volume Peroxide**

**NATURAL HAIR: 30 Volume Peroxide**

SUPERBLANC  X4 + DIVINA.oxi 100ml



1. Apply evenly to the sections of unwashed hair.
2. The development time depends on the condition of the hair and the desired blonde hair colour result.
3. Carefully check hair every 5–10 minutes during process.
4. The maximum total development time is 50 minutes.

## FIRST TIME APPLICATION:

Mid-lengths and ends in first step and root area as second step.

## HERE'S A TIP TO GET THE MAXIMUM FIBER PROTECTION:

Mix **Vitamin.Recharge Ohlàlà** with **Superblanc**.





## VITAMIN.RECHARGE OH LÀ LÀ

- Maximum fiber protection
- Apply it with every technical process before and after
- Mix it with bleaching and hair colour
- Multiple possibilities in a single product
- Mix 10g Oh la la into 30g Superblanc

### VITAMIN ENRICHED FORMULA

multiple benefits in a single product

Multi-vitamin supplement with B1, B2, B6, PP, B12, E Biotin, PANTHENOL & **SEAWEEDS**. Enriched with seaweed (sea algae).

#### Algae, tone, soothe and moisturize tissues and delay aging.

They are particularly remarkable skills to regenerate properties shared with much of the marine flora. The main purpose of this asset is to provide hair with the strength and vitality of the sea.

Commonly used in cosmetics and dietary products, are rich in vitamins, trace elements and minerals salts.

- Sulphates
- Parabens
- Silicones
- Alcohol
- Phthalates
- Phthalates
- Polycyclic Musks
- Synthetic Dye

### MULTI-ACTION JELLY & HAIR FIBER PROTECTOR

An unparalleled experience that pampers the hair fiber. The combination of vitamins and seaweeds complete a treatment inspired by thalassotherapy.

#### All hair types.

#### Maximum fiber protection:

Moisturizes, detangles, disciplines, controls, repairs, protects, rebuilds

#### Action:

- prevents breaking
- Anti Frizz
- Anti pollution



# Stylist tips for perfect results



## INTENSE COLOUR LINE

Protection and care for colour-treated hair, enhancing the quality and making the colour last longer.

**Use E-line Colour pH4.5 technical shampoo** after lightening services to stop oxidation.

### Protection + Vitality + Hydration + Colour Fixing + Antioxidant Properties

#### Grey Shampoo

- Paraben Free

#### Blonde Shampoo

- Paraben Free

#### Colour Conditioner

- Paraben Free
- Sulphate Free
- Colourant Free

#### Colour Shampoo 4.5 Technical

- Paraben Free

#### Colour Shampoo

- Paraben Free

#### Fix Colour

- Paraben Free
- Sulphate Free
- Colourant Free

## QUINO MOELLE      Use Quino Moelle Nutritive Silk Plus I Hydro Lipidic Lotion

- Formulated for hair that is dry or sensitised and lacking in hydro-lipids such as coloured, bleached, chemically treated hair.
- Ideal for hair that is difficult to detangle.
- Softens fragile, brittle hair.
- Works from the inside, strengthening and regenerating the capillary structure.
- Hydro-lipidic action produces amino acids,boosting the formation of young, healthy cells that ensure softness, restoration and capillary protection.
- Hair becomes internally restored, hydrated and manageable.
- Provides exceptional shine and softness.
- Gives heat protection against hairdryers and irons.



### How To Use:

1. After washing the hair, towel dry then apply desired amount to the hair.
2. Do not rinse. Blow-dry as normal. or
3. Apply a small amount to dry hair before using superblanc lightening powder. or
4. Apply to damaged lengths and ends before colour application. or
5. Mix up to 10g Quino Moelle to 30g superblanc to work as a 'plex' type product.

**CAN BE LAYERED WITH OTHER PRODUCTS FOR EXAMPLE E-LINE VOLUME SPRAY, CAPILO CARTHAMUS LIGHT CREAM OR DENSI-MOUSSE.**

---

## THE ULTIMATE LEAVE-IN TREATMENT DUO

Mix with Quino Moelle for added moisture and shine and complete hair fibre protection. Vitamin Recharge Oh là là provides moisture for the hair as well as protecting the hair fibre.

### PLUS

Quino Moelle is a protein treatment, if you mix a small amount of both Quino Moelle and Vitamin Recharge Oh là là together and apply to freshly washed hair as a leave in treatment it will help add both protein and moisture to the hair whilst protecting the hair fibre.



*eva* PROFESSIONAL  
HAIR CARE  
[www.evaprofessional.co.uk](http://www.evaprofessional.co.uk)

44 (0)28 9446 7762  
E5 Plasketts Close, Antrim, BT41  
4LY United Kingdom