

eva PROFESSIONAL
HAIR CARE



Product Guide





Taking care of your beauty
since 1922

Natural beauty, environmentally respect and always so passion

Formulas based on plant extracts, oils and highly emollient active ingredients without compromising the quality of the formulas or results.



QUINOA MILK



WHEAT GERM



AMBER



BREWER'S YEAST



ALOE VERA



THERMAL WATER



GOJI



SHIKAKAI



AVOCADO OIL



SAFFLOWER OIL



JOJOBA OIL



SILK PROTEINS



GINSENG



BAMBOO



WATER LILY



LOTUS FLOWER



PROVITAMIN B5

*OLEO COMPLEX_ The perfect union of avocado, safflower and Jojoba oils.

Line view



Enjoy from your e-line **sensory experience**

NEW Curly Line

Products created to help curly/wavy hair with the formation of defined curls, with movement and freedom.

¿What is a curly hair looking for?

• Layer up

“Curly hair looks best when it’s shoulder length or longer, and with a few layers cut in to keep it from looking bottom-heavy or boxy.”

“The cut is great for curly hair because it helps support the coils and keeps them looking as long and full as possible. This hair must avoid razor cuts as they can rough up the cuticle and exacerbate frizz.”

• Moisturizing

The key of success for this kind of hair. This kinds of hair needs specially formulated products with moisturizing ingredients

Treatment features:

Anti-frizz + Hydration + definition + Shine

Recommended for:

Curly / Wavy hair and Permanent hair



NEW Curly Line



RIZZI SHAMPOO

Anti-frizz shampoo for curly hair. Formulated with quinoa milk and wheat germ, which helps revitalize curls. Leaves hair hydrated and shiny, and shapes the curls.

Sizes (ml):

300 / 1000 / 60 / 10

Free of:

Paraben / Colorant



ULTRA RIZZI

Curl enhancing mousse. No rinse.

Shapes and defines curls, giving the hair volume and body. Shape memory.

Sizes (ml):

200

Free of:

Paraben / Colorant



RIZZI CONDITIONER

Anti-frizz conditioner for curly hair. Nourishes and rebuilds the core of the hair fibre and moisturises the scalp. Formulated with quinoa milk, silk, and wheat germ, which helps revitalize curls. Leaves hair hydrated and shiny, and shapes the curls.

Sizes (ml):

300 / 1000 / 60 / 10

Free of:

Sulphates / Paraben / Colorant

ACTIVES:



-Quinoa milk: Its proteins act by protecting hair from external aggressions, repairing, conditioning and enhancing elasticity. It brings shine.



-Wheat Germ: Provides nutrients to scalp and hair. Hydrates scalp and vigorizes hair.

NEW Curly Line

SALON TIPS:

- Create a Salon sales Ritual: Clean + Condition + Treat and wave
- Recommend a curly treatment in the case of wave hair, curly hair also will have defined its curls.
- Acquire a special pack for home maintenance after salon treatment application.
- Manage discounts for complete treatment.
- Special campaigns: Mother's day, Christmas gift, take a friend, Crazy Curly Campaign.

EXAMPLES:



With
Quinoa milk
& Wheat germ

- Revitalizes curls
- Texturizes hair
- Vigorizes hair
- Provides nutrients to scalp & hair



NEW Volume Line

This line will bring a set of benefits that give fine, weak hair the appearance of strong, fully-bodied hair.

¿What is a fine hair looking for?

• Volume

Adding lift at the scalp is one of the best ways you can create this volume effect. Applying a volumizing product to the roots to set the lift created with the blow-drying.

• Strength

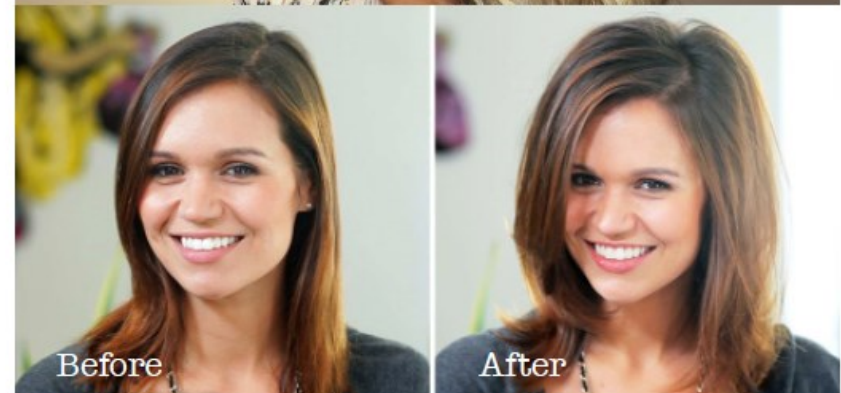
Volumizing products actually increase the size of individual strands. They also help the hairstyle last longer.

Treatment features:

Volume + Body + Strength + Shine

Recommended for:

Fine / thin hair



NEW Volume Line



VOLUME SHAMPOO

Volume shampoo for fine hair. Formulated with amber extract and brewer's yeast. Strengthens the capillary structure, preventing fibre breakage. Leaves hair with flow, volume, and shine.

Sizes (ml):

300 / 1000 / 60 / 10

Free of:

Paraben / Colorant



VOLUME SPRAY

Volume spray for fine hair. Provides straight and lifeless hair with body and texture. Formulated with provitamin B5 and brewer's yeast. Hair is left revitalised, with strength and extra volume.

Sizes (ml):

200

Free of:

Sulphate/ Paraben / Colorant

ACTIVES:



-Amber extract: It acts by protecting, conditioning and strengthening the hair structure, giving the hair more shape and body.



-Brewer's yeast extract: Rich in minerals, proteins and vitamins, it provides hair strength, volume and elasticity.



-Provitamin B5: Provitamin B5 reconstitutes and strengthens the internal capillary structure, increasing its resistance to breakage and providing greater strength and vitality.

NEW Volume Line

SALON TIPS:

- Volume products are necessary for hair salon and also demanded.
- Create a salon sales ritual: Clean + Treat and Volume.
- Acquire a special Volume pack and educate to your customers. A fine hair with volume tips is always happy and grateful.
- Special campaigns: Mother's day, Christmas, Specific Volume category pack.

EXAMPLES:



eva line
Volume

Volumize Pack

With Amber extract & Brewer's Yeast

Volume Shampoo - Volume Spray - Ends Treatment

www.evaprofessional.com

NEW Hydration Line

Products designed to obtain the perfect hydration level. Targeted cleansing and conditioning for beautiful hair, every day and for everybody, and both kids and sensitive scalps.

¿What is a dehydrated hair looking for?

• Shine

A hydrated hair is a shiny hair. Dehydration causes breakage and shine loss.

• Stop frizz & static electricity

Hydration products will help you retain humidity inside of hair and creating a protecting barrier. This action will keep your hair smooth and seal hair cuticle.

Treatment features:

Tonifies + Hydrate + Calm + Protect + Shine

Recommended for:

All kinds of hair, also for kids and sensitive scalps.



NEW Hydration Line



HYDRA SHAMPOO

Moisturizing shampoo for all hair types. Formulated with Aloe Vera and Thermal Water. Provides scalp and hair with the necessary balance, retaining moisture. The hair is left with a unique feeling of cleanliness and shine. Use regularly to protect and moisturize the scalp and hair.

Sizes (ml):

300 / 1000 / 60 / 10

Free of:

Sulphates / Paraben / Colorant / Allergen



HYDRA CONDITIONER

Moisturizing conditioner for all hair types. Formulated with Aloe Vera and Thermal Water. Conditions and untangles hair, avoiding dehydration. Provides softness, elasticity, and shine. It can be used daily as a hydration ritual. Use regularly for best results.

Sizes (ml):

300 / 1000 / 60 / 10

Free of:

Sulphates / Paraben / Colorant / Allergen

ACTIVES:



-Aloe Vera: Aloe Vera is an important cell regenerator, healing and toning, so that applied regularly prevents the aging of cells, delaying the symptoms of age.



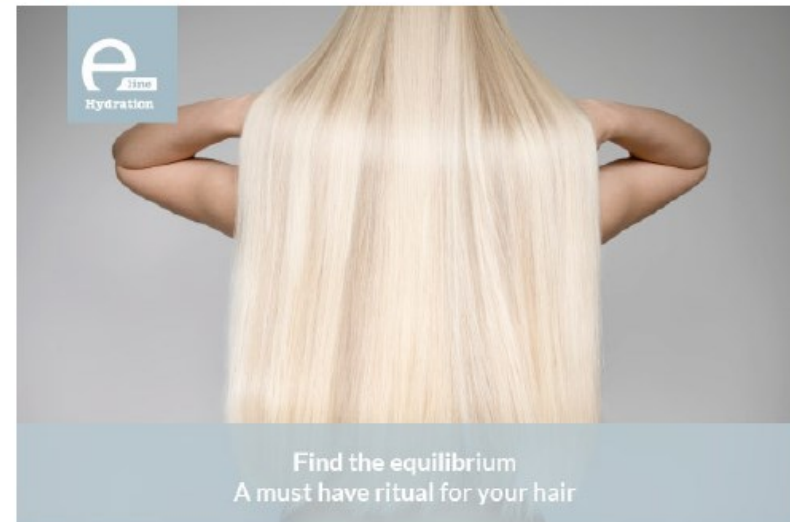
-Thermal Water: Calms and protects the scalp from irritation. Provides shine, flexibility and hydrates the hair. Rich in minerals such as zinc, selenium, iron and magnesium gives an extra supply of vitamins.

NEW Hydration Line

SALON TIPS:

- A hydration service will be an excellent hair service and also for sensitive scalps due to its formulation free of.
- Create a Salon sales Ritual: Clean + Condition ritual
- Acquire a special pack for home maintenance after salon treatment application.
- Special campaigns: Mother's day, Christmas, Sports lovers, kids....

EXAMPLES:



With
Aloe Vera &
Thermal Water

- Reconstructs
- Moisturises
- Calms scalp
- Protects
- Shine



Intense Colour Line

Protection and care for colour-treated hair, enhancing the quality and making the colour last longer.

¿What is a coloured hair looking for?

• Protection

Use the best products for colour-treated hair will provide a better colour protection. A well -conditioned hair will be a key factor.

• Shine & long lasting colour

Hair colour can make hair more porous, which causes it to absorb and release moisture more easily. Long-lasting hair color also depends on well-conditioned hair. Red dye is most susceptible to colour loss because they have the largest molecules. Use colour fixing products because it always is a must.

Treatment features:

Protection + Vitality + Hydration + Colour fixing + Anti-oxidant properties

Recommended for:

Coloured hair.



Intense Colour Line



COLOUR SHAMPOO 4.5 TECHNICAL

Professional after colour shampoo. Technical pH 4.5. Returns the pH of the hair to its optimum value of 4.5 to trap the colour pigments deep down.

Sizes (ml):

1000 professional size only.

Free of:

Paraben



COLOUR SHAMPOO

Colour protecting shampoo for coloured-treated hair. Promotes the reconstruction of the hair after colouring process. Keeps the colour bright for a longer period of time.

Sizes (ml):

300 / 60 / 10

Free of:

Paraben



BLONDE SHAMPOO

Protecting shampoo for blonde hair. Contains tone correctors that prevent undesirable highlights in blonde hair. Goji and Shikakai extracts make the hair extra soft and shiny.

Sizes (ml):

300/ 1000 / 60 / 10

Free of:

Paraben



GREY SHAMPOO

Protecting shampoo for white and grey hair. Revitalizes cool, metallic highlights in white and grey hair. Formulated with corrective pigments, it prevents color from fading and corrects yellowish shades commonly found in this type of hair.

Sizes (ml):

300/ 1000 / 60 / 10

Free of:

Paraben

Intense Colour Line



COLOUR CONDITIONER

Conditioner for coloured hair. Conditioning cream for extra nourishment and moisturising after a colouring process. Rinse out. It's nourishing properties add strength and natural shine to coloured hair. Formulated with Goji and Shikakai extracts.

Sizes (ml):

300/ 1000 / 60 / 10

Free of:

Sulphate / Paraben / Colorant



FIX COLOUR

Colour fixing treatment. No rinse. Colour fixing treatment with keratin proteins. Its sealing action sets the Keratin inside the hair. Protects and illuminates the hair, preventing excessive color loss and fading. Revitalizes and prolongs the duration of the color in colored or highlighted hair, due to shikakai extracts.

Sizes (ml):

300/ 1000 / 60 / 10

Free of:

Sulphate / Paraben / Colorant

ACTIVES:



-Goji extract: It's antioxidant and scalp-stimulating properties make it a necessary element to protect and prolong the life of hair colour. Photoprotective properties.



-Shikakai extract: Its antioxidant, dermo-stimulating properties makes Shikakai a necessary ally to protect your hair colour, making it last longer.

Intense Colour Line

SALON TIPS:

- Create a Salon sales Ritual: Clean + Condition + Treat fixing colour
- Acquire a special pack for home maintenance after salon treatment application.
- Special campaigns: Mother's day, Christmas, Colour seduction,

EXAMPLES:



e line
Intense colour

Intense Blonde Pack

With Shikakai extract & Keratin

Blonde Shampoo · Colour Conditioner
Ends treatment

www.evaprofessional.com

e line
Intense colour

Colour Seduction Pack

With Shikakai extract & Keratin

Colour Shampoo · Colour Conditioner
Ends treatment

www.evaprofessional.com

e line
Intense colour

Intense Silver Pack

With Shikakai extract & Keratin

Grey Shampoo · Colour Conditioner
Ends treatment

www.evaprofessional.com

Ultra Repair Line

Products that act deep-down in dry, dehydrated hair, restructuring a revitalizing it as needed.

¿What is a dry/damaged hair looking for?

• Nourishing and shine

Carefully select a sulfate-free shampoo and conditioner formulated for damaged hair. Sticking with shampoos and conditioners that contain natural oils and herbs will help repair your damaged hair.

Treatment features:

Rebuilds hair fibre+ Repairs + Moisturizes + Elasticity and shine

Recommended for:

Dry / Damaged hair



Ultra Repair Line



REPAIR SHAMPOO

Repair shampoo for dry or damaged hair. Revitalizes hair, providing the nutrients mistreated hair needs to make it healthy again.

Sizes (ml):

300/ 1000 / 60 /10

Free of:

Sulphate / Paraben / Colorant



@22

No-rinse nutritive emulsion. Conditions and moisturizes dry, mistreated hair. Makes detangling easier, while providing elasticity, vigor and shine. Non-greasy formula.

Sizes (ml):

200

Free of:

Sulphate / Paraben / Colorant



REPAIR MASK

Repair mask for dry or damaged hair. Nourishes and repairs deep down. Stabilizes, strengthens and rebuilds the hair fibre.

Sizes (ml):

300/ 1000 /60 10

Free of:

Sulphate/ Paraben / Colorant

ACTIVES:

With OLEO COMPLEX_ The perfect union of avocado, safflower and Jojoba oils.



-Avocado oil : Its vitamin-rich content gives it great scalp-protecting power. Helps recover and structure the capillary fiber and the correct level of nourishment, elasticity and shine.



-Jojoba oil: It has an emollient effect. It gives the skin elasticity, particularly during exposure to sunlight. The components of Jojoba oil are similar to the skin protective film and thus penetrate well through the superficial layers of the epidermis and help maintain the lipid film.



-Safflower oil: Safflower oil is rich in linoleic acid, containing 78%. Rich in vitamin E. Contains high levels of oleic acid, which protects, nourishes and firms the hair.

Ultra Repair Line

SALON TIPS:

- Repairing treatment is the most demanded treatments after hair loss.
- Create a Salon sales Ritual: Clean + Intense Condition + Treat repair.
- Acquire a special Ultra Repair pack and educate to your customers.
- Special campaigns: Mother's day, Christmas, Specific Ultra Repair category pack.

EXAMPLES:



e line
Ultra Repair

Extreme Repair Pack

With Oleo Complex:
Avocado,
Safflower & Jojoba

Repair Shampoo · @22
Repair Mask

www.evaprofessional.com

Control Frizz Line

Products designed to keep hair under control. Total anti-frizz control formula. Manageable hair with total freedom of movement.

¿What is a frizzy hair looking for?

• Smoothing

Frizz is mostly caused by a lack of moisture in hair but humidity can also contribute to it.

“The hair loses moisture throughout the day, so midday the cuticle opens up and lets the outside air in, creating a frizzy mess.

• A good and specific Conditioner

It's all about depositing moisture in the hair, or else the cuticle will open up to let moisture in and turn the hair from smooth to frizzy. So is very important a specific conditioner for frizzy hair that will keep it away from your roots if you're worried about it weighing down your hair.

Treatment features:

Anti-frizz + Hydration + Discipline and Control hair + Shine

Recommended for:

Frizzy and undisciplined hair



Control Frizz Line



CONTROL SHAMPOO

Discipline shampoo. Controls frizzy hair, providing nutrition and hydration. Facilitates styling.

Sizes (ml):

300 / 1000 / 60 / 10

Free of:

Paraben / Colorant



CONTROL LISS CREAM

Discipline cream. Rinse out. Stabilizes the hair, providing a high level of anti-frizz and anti-moisture protection for total control.

Sizes (ml):

300 / 1000 / 60 / 10

Free of:

Sulphates / Paraben / Colorant



ENDS TREATMENT

Intensive anti-frizz treatment. Straightens, repairs, and restructures the hair fiber. Enhances shine and corrects frizzy hair.

Sizes (ml):

50

Free of:

Sulphates / Paraben / Colorant

ACTIVES:



-Silk proteins: Hydrating, protective action. Increases elasticity and shine. It protects from external aggressions, repairing and conditioning it while increasing its elasticity.



-Wheat Germ: Provides nutrients and invigorates the hair. Purifies the scalp.

Control Frizz Line

SALON TIPS:

- Create a Salon sales Ritual
- Clean + Condition + Treat and discipline
- Acquire a special pack for home maintenance after salon treatment application.
- Manage discounts for complete treatment.
- Special campaigns: Mother's day, Christmas gift, take a friend, Stop Frizz.

EXAMPLES:





Stop the frizz Pack

With Shikakai extract & Keratin



Control Shampoo · Control Liss Cream
Ends treatment

www.evaprofessional.com

Care Line

Products designed to provide specific solutions to problems such as hair loss, dandruff or oily hair.

¿What are persons with scalp problems looking for?

• Professional advice

A professional solution is the key for the success. A good diagnostic of the problem and emphatic relation will be the key.

• Specific products with good solutions

Use an specific shampoo to treat specific problems and keep the scalp's natural protective barrier active. That's the reason why is important a distinctive product.

• A good prevention

The regular use of the treatment is the best way to prevent and finish with the problem.

Treatment features:

Tonifies + calm + treat scalp

Recommended for:

Scalp problems such as hair loss, dandruff and oily scalp and hair.



Care Line

STOP OILY HAIR:
Ginseng + Lotus Flower extracts



FRESH SHAMPOO

Regulating oil-fighting shampoo. Cleans and purifies hair, eliminating excess oil without irritating the scalp.

Sizes (ml):

300/ 1000 / 60 / 10

Free of:

Paraben / Colorant

SALON TIPS:

- Manage discounts and sampling.
- Special campaigns: Stop oily hair

ACTIVES:



-Ginseng: Ginseng extract is rich in vitamins, minerals and amino acids. Which brings energy and vitality to both scalp and hair.



- Lotus Flower extract: With soothing and toning properties that relax the activity of the sebaceous glands.

Care Line

STOP DANDRUFF: Ginseng + Water Lily extracts



CSP SHAMPOO

Regulating dandruff shampoo. Eliminates ordinary dandruff and itching, nourishing the scalp.

Sizes (ml):

300/ 1000 / 60 /10

Free of:

Paraben

SALON TIPS:

- Manage discounts and sampling.
- Special campaigns: Stop dandruff hair.

ACTIVES:



-Ginseng: Ginseng extract is rich in vitamins, minerals and amino acids. Which brings energy and vitality to both scalp and hair.



- Water Lily extract: With excellent anti-inflammatory, antibacterial, hydrating and toning properties, ideal for fighting dandruff.

Care Line

STOP HAIR LOSS: Ginseng + Bamboo extract



HL SHAMPOO

Energising anti-hair loss shampoo. Tones the scalp and provides nutrients that promote hair growth.

Sizes (ml):

300/ 1000 / 60 /10

Free of:

Paraben



HL LOTION

Energising anti-hair loss lotion. Tones and stimulates blood circulation while nourishing the hair follicle. Promotes capillary growth.

Sizes (ml):

100 / 12u. x 10ml

Free of:

Colorant / Paraben / Sulphate

ACTIVES:



-Ginseng: Ginseng extract is rich in vitamins, minerals and amino acids. Which brings energy and vitality to both scalp and hair.



- Bamboo extract: Regenerates and tones scalp skin cells, helping to stimulate hair growth.

Care Line

SALON TIPS:

- Hair loss treatments are important in professional hair salons.
- Acquire a special Hair loss pack and educate to your customers.
- Special campaigns: Stop hair loss / Father's day.

EXAMPLES:



How to use guide

E-LINE SHAMPOOS

Apply evenly on wet hair and work in, massaging gently. Rise and apply a second time. Rinse out with plenty of warm water.

E-LINE CONDITIONERS

Apply to damp hair, using a comb to spread it evenly throughout the hair. Leave on for 1-3 minutes and rinse.

E-LINE ULTRARIZZI MOUSSE

Apply the product on damp hair, directly on the base of each lock. Using a comb, extend evenly on throughout hair middle-lengths and ends.

E-LINE VOLUME SPRAY

Spray on damp or almost dry hair, starting at the roots and extending it to the middle of the hair length. Style as normal.

E-LINE @22

Apply a suitable amount to washed and towel-dried hair. Depending on the hair length. Extend throughout the hair with a comb. No rinse needed.

E-LINE ENDS TREATMENT

Distribute a few drops on wet or dry hair (mid-lengths to ends) and comb.

E-LINE HL LOTION 100ml

Wash your hair with HL SHAMPOO and dry it with a towel. Spray HL LOTION in the scalp by parting your hair. Proceed with a soft and circular massage. Insist in the most affected areas. No rinse.

E-LINE HL LOTION 12x10ml

Wash your hair with HL SHAMPOO and dry it with a towel. Apply HL LOTION in the scalp by parting your hair. Proceed with a soft and circular massage. Insist in the most affected areas. No rinse.

E-line category products



Shampoos



Conditioners/Masks



Form/Volume



Treatment



Professional hair cosmetics
made with passion

eva
PROFESSIONAL
HAIR CARE

Thanks

