

KIMORA

LUXURY LINE

SS 2021





1

Signature Unisex Kimonos



Composition Sheer Fabric | One Size | Cut Signature Kimono | Care Dry Clean Only | Retail Price 300\$ Wholesale Price 150\$



Composition Sheer Fabric | One Size | Cut Signature Kimono | Care Dry Clean Only | Retail Price 280\$ Wholesale Price 140\$



Composition Sheer Fabric | One Size | Cut Signature Kimono | Care Dry Clean Only | Retail Price 280\$ Wholesale Price 140\$



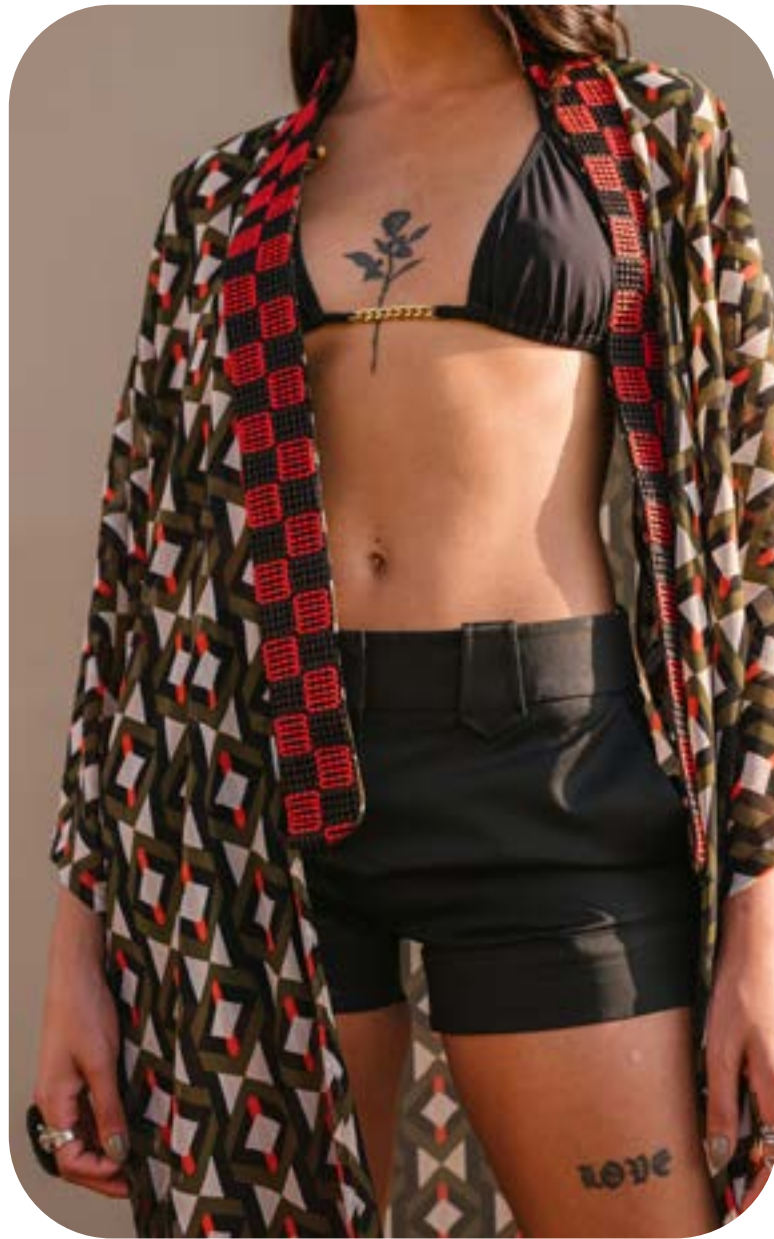
Composition Sheer Fabric | One Size | Cut Signature Kimono | Care Dry Clean Only | Retail Price 280\$ Wholesale Price 140\$



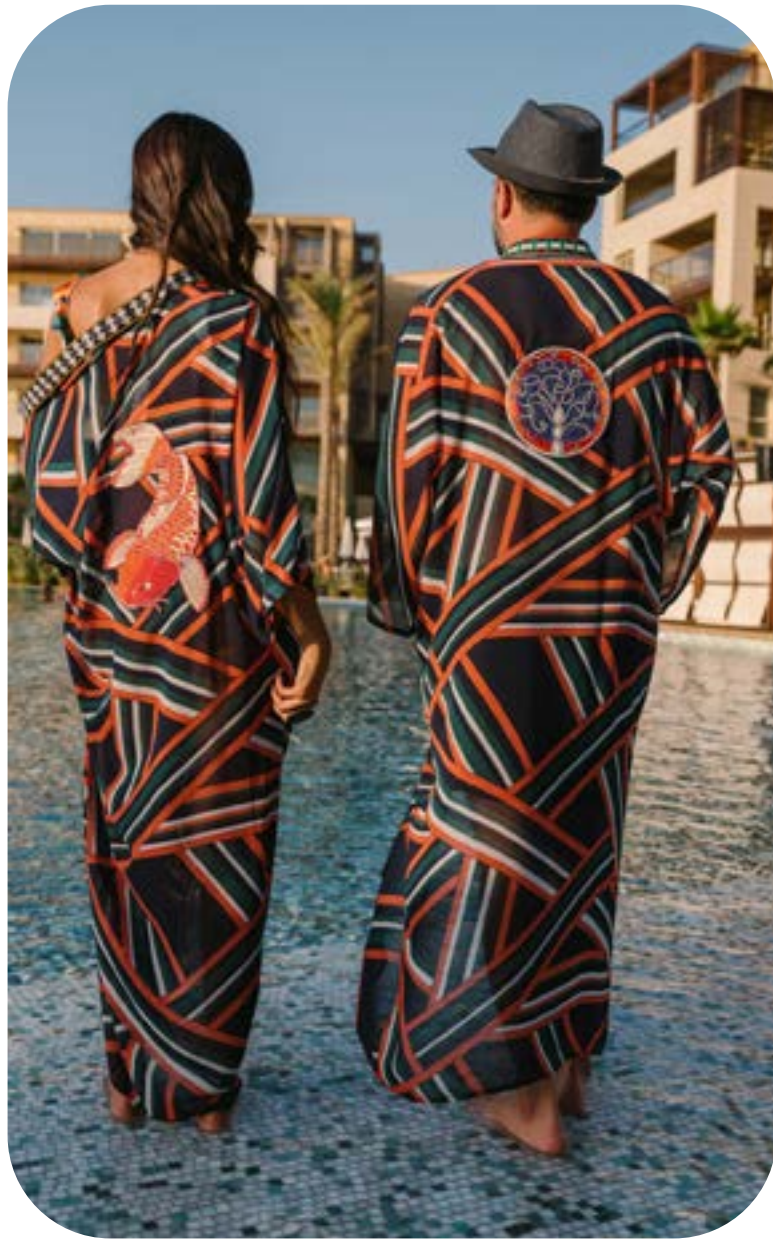
Composition Sheer Fabric | One Size | Cut Signature Kimono | Care Dry Clean Only | Retail Price 295\$ Wholesale Price 148\$



Composition Sheer Fabric | One Size | Cut Signature Kimono | Care Dry Clean Only | Retail Price 280\$ Wholesale Price 140\$



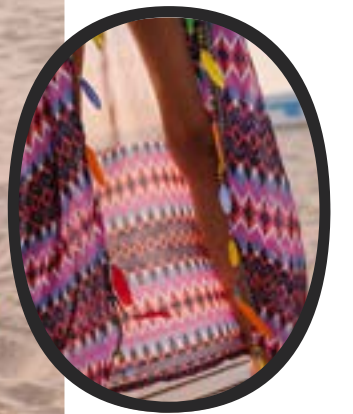
Composition Sheer Fabric | One Size | Cut Signature Kimono | Care Dry Clean Only | Retail Price 280\$ Wholesale Price 140\$



Composition Sheer Fabric | One Size | Cut Signature Kimono | Care Dry Clean Only | Retail Price 280\$ Wholesale Price 140\$



Composition Sheer Fabric | One Size | Cut Signature Kimono | Care Dry Clean Only | Retail Price 295\$ Wholesale Price 148\$



Composition Sheer Fabric | One Size | Cut Signature Kimono | Care Dry Clean Only | Retail Price 295\$ Wholesale Price 148\$



Composition Viscose Cotton | One Size | Cut Signature Kimono | Care Dry Clean Only | Retail Price 280\$ Wholesale Price 140\$



Composition Sheer Fabric | One Size | Cut Signature Kimono | Care Dry Clean Only | Retail Price 295\$ Wholesale Price 148\$



Composition Viscose Cotton | One Size | Cut Short Kimono | Care Dry Clean Only | Retail Price 250\$ Wholesale Price 125\$



Composition Sheer Fabric | One Size | Cut Signature Kimono | Care Dry Clean Only | Retail Price 280\$ Wholesale Price 140\$



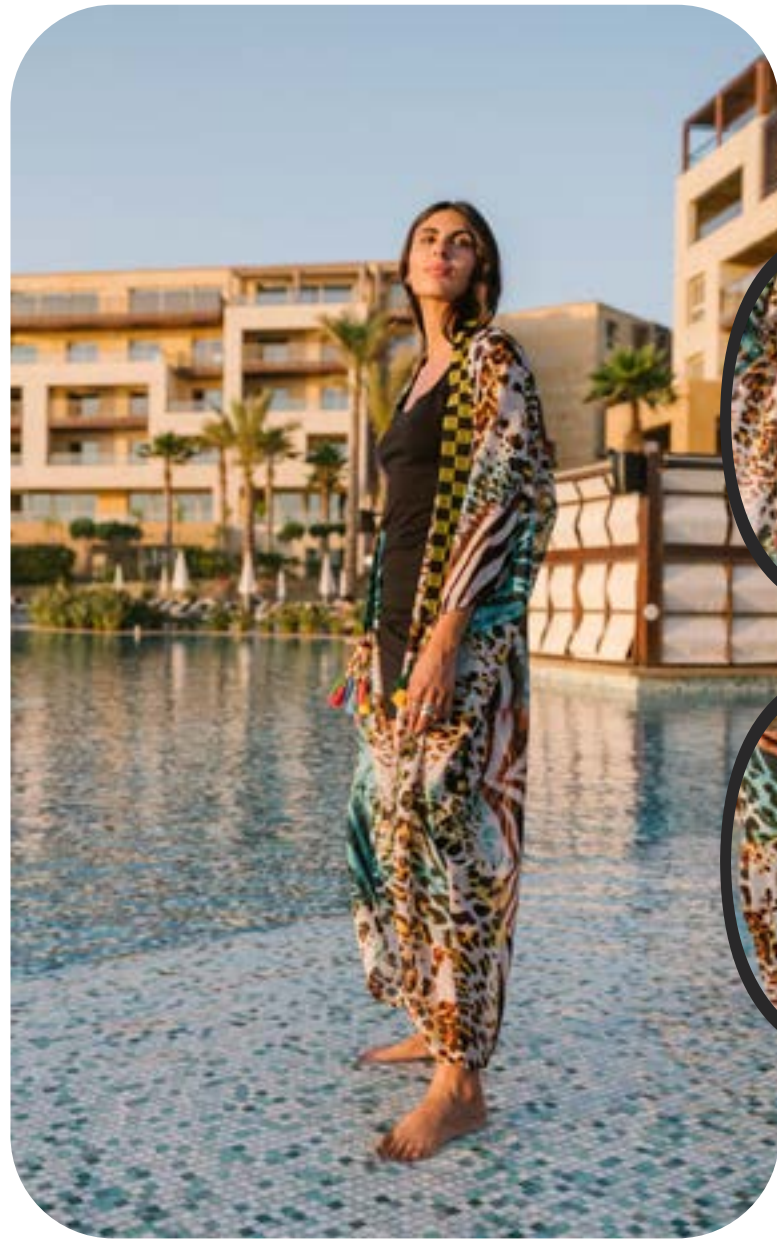
Composition Viscose Cotton | One Size | Cut Signature Kimono | Care Dry Clean Only | Retail Price 295\$ Wholesale Price 148\$



Composition Viscose Cotton | One Size | Cut Signature Kimono | Care Dry Clean Only | Retail Price 280\$ Wholesale Price 140\$



Composition Sheer Fabric | One Size | Cut Signature Kimono | Care Dry Clean Only | Retail Price 300\$ Wholesale Price 150\$



Composition Sheer Fabric | One Size | Cut Signature Kimono | Care Dry Clean Only | Retail Price 270\$ Wholesale Price 135\$



Composition Viscose Cotton | One Size | Cut Unisex Signature Kimono | Care Dry Clean Only | Retail Price 250\$ Wholesale Price 125\$



Composition Viscose Cotton | One Size | Cut Unisex Signature Kimono | Care Dry Clean Only | Retail Price 250\$ Wholesale Price 125\$



Composition Viscose Cotton | One Size | Cut Unisex Signature Kimono | Care Dry Clean Only | Retail Price 250\$ Wholesale Price 125\$



Composition Viscose Cotton | One Size | Cut Unisex Signature Kimono | Care Dry Clean Only | Retail Price 250\$ Wholesale Price 125\$



2

The Rhea Dress



Composition Viscose Cotton | One Size | Cut Sleeveless Rhea Dress | Care Dry Clean Only | Retail Price 220\$ Wholesale Price 110\$



Composition Viscose Cotton | One Size | Cut Sleeveless Rhea Dress | Care Dry Clean Only | Retail Price 220\$ Wholesale Price 110\$



Composition Silky Sateen | One Size | Cut Sleeveless Rhea Dress | Care Dry Clean Only | Retail Price 245\$ Wholesale Price 123\$



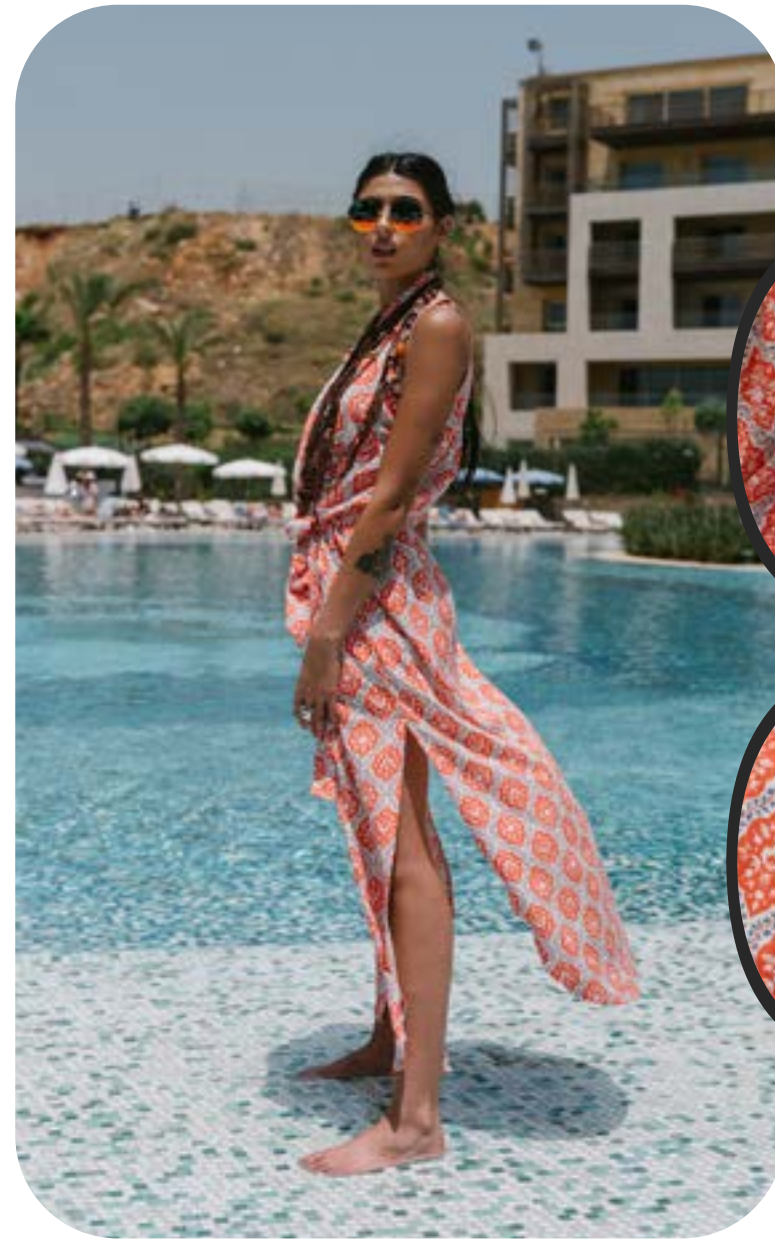
Composition Viscose Cotton | One Size | Cut Sleeveless Rhea Dress | Care Dry Clean Only | Retail Price 220\$ Wholesale Price 110\$



Composition Viscose Cotton | One Size | Cut Sleeveless Rhea Dress | Care Dry Clean Only | Retail Price 220\$ Wholesale Price 110\$



Composition Viscose Cotton | One Size | Cut Sleeveless Rhea Dress | Care Dry Clean Only | Retail Price 220\$ Wholesale Price 110\$



Composition Viscose Cotton | One Size | Cut Sleeveless Rhea Dress | Care Dry Clean Only | Retail Price 220\$ Wholesale Price 110\$



3

Under The Sea Kimonos

Available in White, Black, Red, Yellow, Green, Navy, Turquoise, Pink Corale and Royal Blue



Composition Mousseline | One Size | Cut Under the Sea Kimono | Care Dry Clean Only | Retail Price 220\$ Wholesale Price 110\$

Available in White, Black, Red, Yellow, Green, Navy, Turquoise, Pink Corale and Royal Blue



Composition Mousseline | One Size | Cut Under the Sea Kimono | Care Dry Clean Only | Retail Price 220\$ Wholesale Price 110\$

Available in White, Black, Red, Yellow, Green, Navy, Turquoise, Pink Corale and Royal Blue



Composition Mousseline | One Size | Cut Under the Sea Kimono | Care Dry Clean Only | Retail Price 220\$ Wholesale Price 110\$

Available in White, Black, Red, Yellow, Green, Navy, Turquoise, Pink Corale and Royal Blue

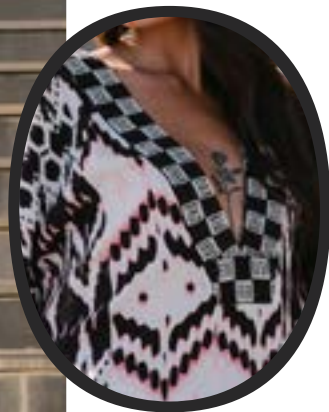


Composition Mousseline | One Size | Cut Under the Sea Kimono | Care Dry Clean Only | Retail Price 280\$ Wholesale Price 140\$



4

**Mila Kaftan
Dress**



Composition Viscose Cotton | One Size | Cut Mila Kaftan Dress | Care Dry Clean Only | Retail Price 200\$ Wholesale Price 100\$



Composition Viscose Cotton | One Size | Cut Mila Kaftan Dress | Care Dry Clean Only | Retail Price 220\$ Wholesale Price 110\$



Composition Viscose Cotton | One Size | Cut Mila Kaftan Dress | Care Dry Clean Only | Retail Price 220\$ Wholesale Price 110\$



Composition Viscose Cotton | One Size | Cut Mila Kaftan Dress | Care Dry Clean Only | Retail Price 220\$ Wholesale Price 110\$



Composition Viscose Cotton | One Size | Cut Mila Kaftan Dress | Care Dry Clean Only | Retail Price 220\$ Wholesale Price 110\$



4

Slit Kimonos



Composition Silky Sateen | One Size | Cut Slit Kimono | Care Dry Clean Only | Retail Price 220\$ Wholesale Price 110\$



Composition Viscose Cotton | One Size | Cut Slit Kimono | Care Dry Clean Only | Retail Price 230\$ Wholesale Price 115\$



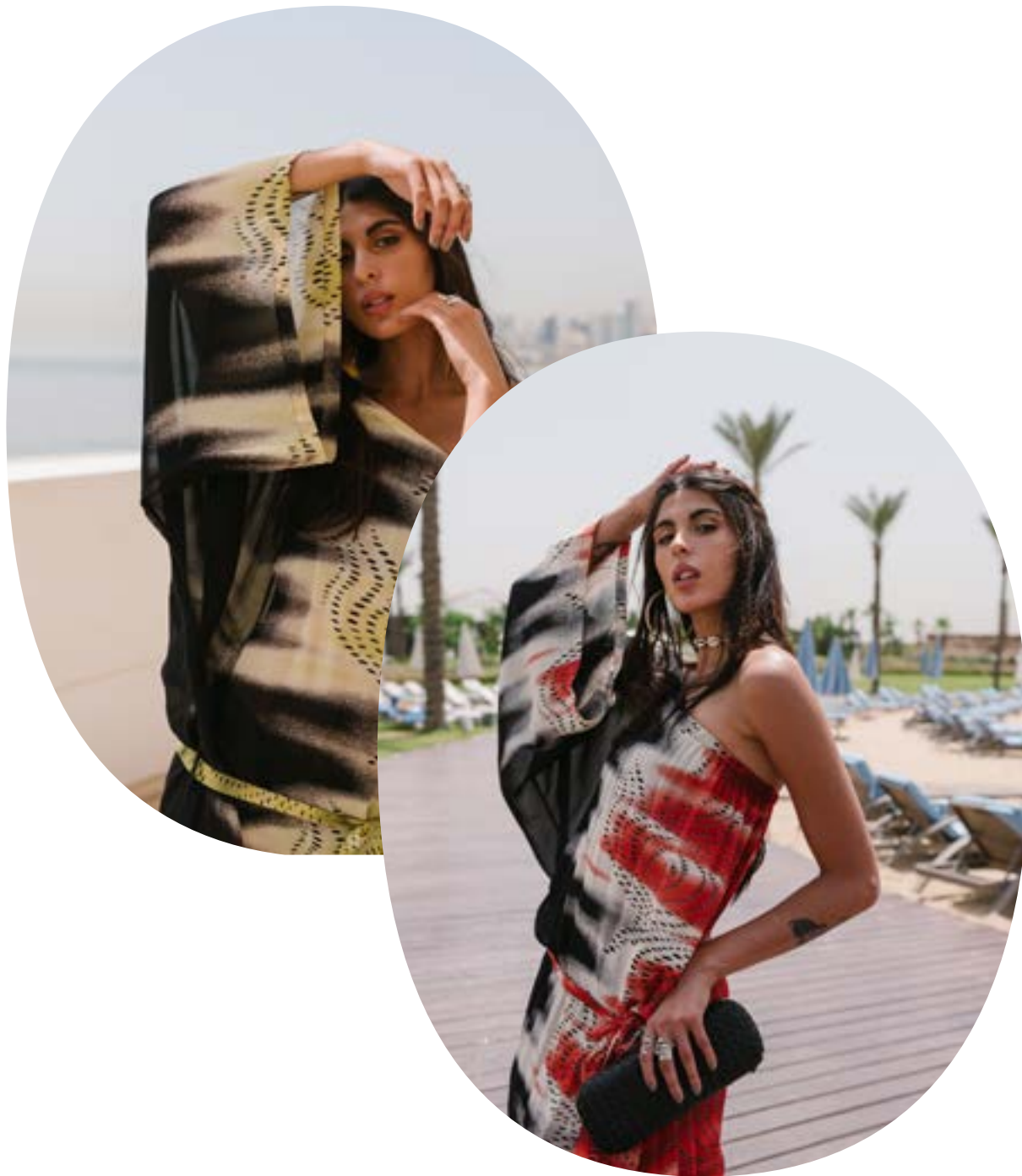
Composition Sheer Fabric | One Size | Cut Slit Kimono | Care Dry Clean Only | Retail Price 250\$ Wholesale Price 125



Composition Sheer Fabric | One Size | Cut Slit Kimono | Care Dry Clean Only | Retail Price 200\$ Wholesale Price 100\$



Composition Sheer Fabric | One Size | Cut Slit Kimono | Care Dry Clean Only | Retail Price 250\$ Wholesale Price 125\$

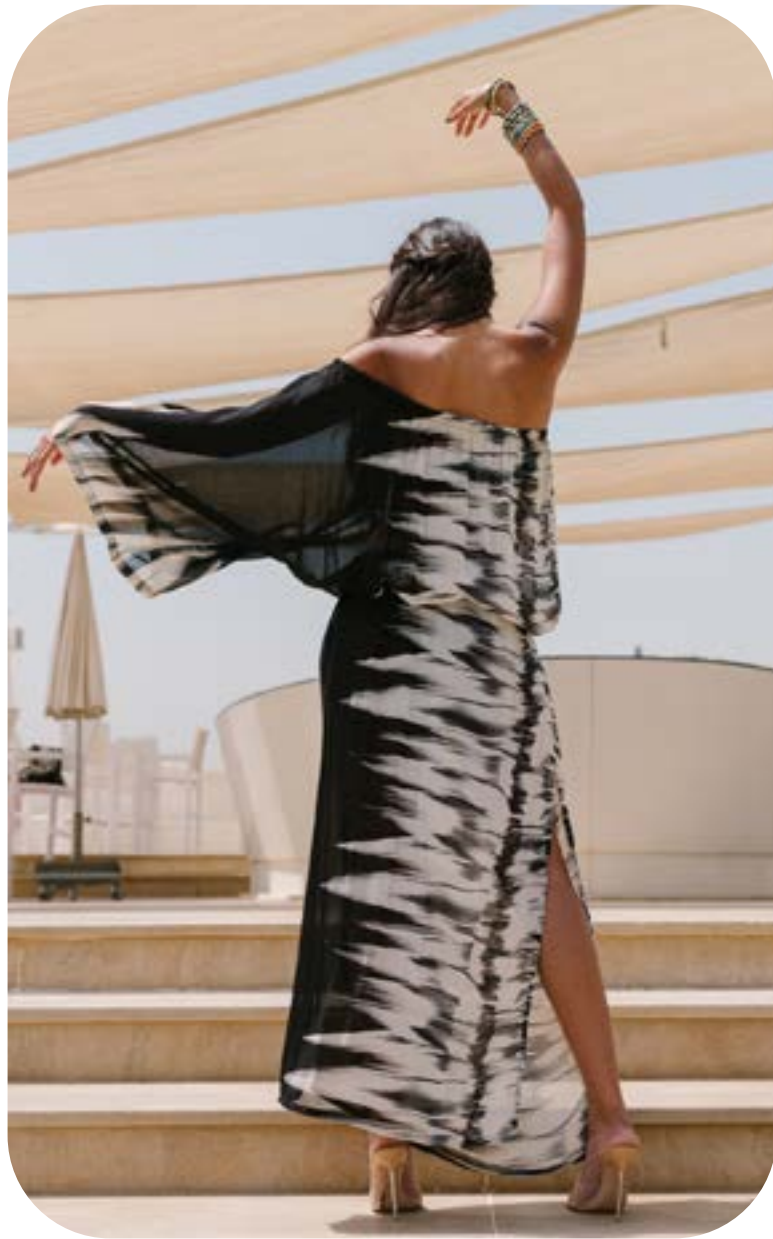


5

Rana Offshoulder Dress



Composition Crêpe Georgette | One Size | Cut Rana Offshoulder Dress | Care Dry Clean Only | Retail Price 280\$ Wholesale Price 140\$



Composition Crêpe Georgette | One Size | Cut Rana Offshoulder Dress | Care Dry Clean Only | Retail Price 280\$ Wholesale Price 140\$



Composition Crêpe Georgette | One Size | Cut Rana Offshoulder Dress | Care Dry Clean Only | Retail Price 280\$ Wholesale Price 140\$



Composition Jersey Fabric | One Size | Cut Rana Offshoulder Dress | Care Dry Clean Only | Retail Price 250\$ Wholesale Price 125\$



Composition Jersey Fabric | One Size | Cut Rana Offshoulder Dress | Care Dry Clean Only | Retail Price 250\$ Wholesale Price 125\$



Composition Jersey Fabric | One Size | Cut Rana Offshoulder Dress | Care Dry Clean Only | Retail Price 250\$ Wholesale Price 125\$



Composition Jersey Fabric | One Size | Cut Rana Offshoulder Dress | Care Dry Clean Only | Retail Price 250\$ Wholesale Price 125\$



Composition Jersey Fabric | One Size | Cut Rana Offshoulder Dress | Care Dry Clean Only | Retail Price 300\$ Wholesale Price 150\$

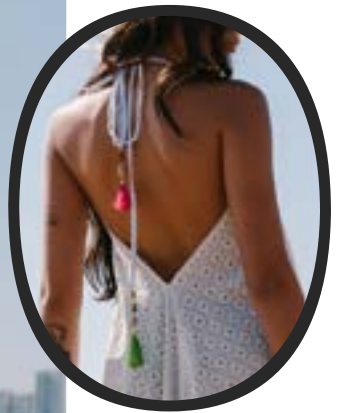
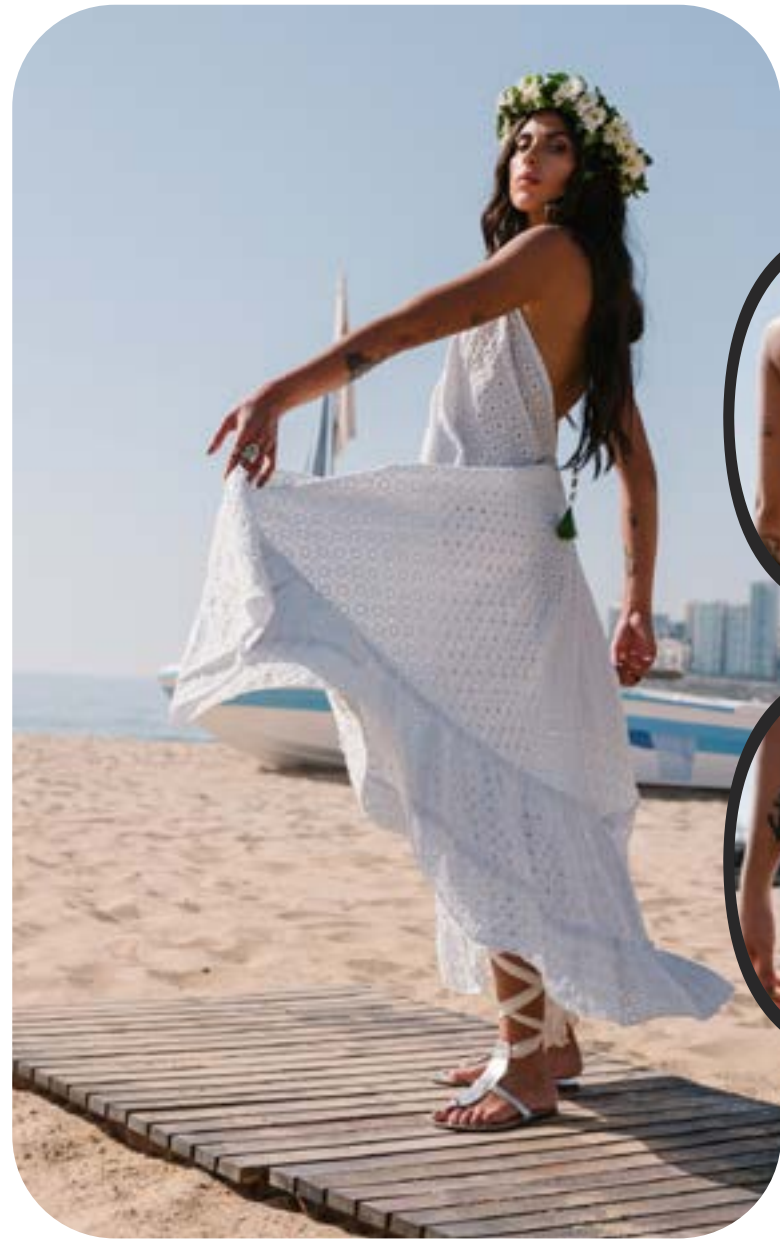


5

Angie Boho Dress



Composition Poupline Brodee | One Size | Cut Angie Boho Dress | Care Dry Clean Only | Retail Price 250\$ Wholesale Price 125\$



Composition Poupline Brodee | One Size | Cut Angie Boho Dress | Care Dry Clean Only | Retail Price 250\$ Wholesale Price 125\$



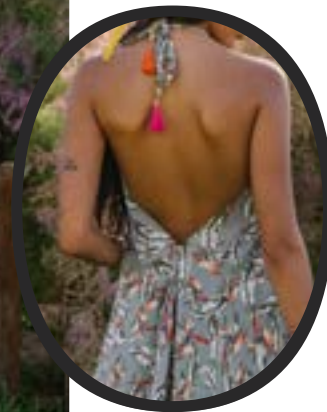
Composition Poupline Brodee | One Size | Cut Angie Boho Dress | Care Dry Clean Only | Retail Price 250\$ Wholesale Price 125\$



Composition Poupline Brodee | One Size | Cut Angie Boho Dress | Care Dry Clean Only | Retail Price 250\$ Wholesale Price 125\$



Composition Viscose Cotton | One Size | Cut Angie Boho Dress | Care Dry Clean Only | Retail Price 250\$ Wholesale Price 125\$



Composition Viscose Cotton | One Size | Cut Angie Boho Dress | Care Dry Clean Only | Retail Price 250\$ Wholesale Price 125\$

KIMORA

www.kimora.me

Monot Street, Beirut - Lebanon