

**INSTRUCTION MANUAL
MINI DONUT MAKER**

MDM-1W



SMART PLANET

**PLEASE READ THESE INSTRUCTIONS CAREFULLY
AND RETAIN FOR FUTURE REFERENCE.**

IMPORTANT SAFEGUARDS

- Read all instructions before using the Mini Donut Maker.
- Do not touch hot surfaces. Always use the plastic handle on lid. Do not touch cover when hot.
- To protect against fire, electric shock and injury, do not immerse cord, plug or Mini Donut Maker in water or other liquids.
- Close supervision is necessary when any appliance is used by or near children.
- Before use unwind the power cord completely and keep the cord away from the hot parts of the appliance.
- Do not let the power cord hang over edge of the table or counter or touch hot surfaces.
- Do not place on or near hot gas or electric burner, or in a heated oven.
- Only operate the Mini Donut Maker on a dry, flat non-slip surface.
- Do not use the Mini Donut Maker outdoors.
- Do not operate the Mini Donut Maker with a damaged cord or plug. If this product malfunctions, or has been damaged in any manner, return it to the Mini Donut Service Center for examination, repair or adjustment.
- The use of accessory attachments not recommended by Smart Planet, may result in fire, electric shock or injury.
- Always unplug the Mini Donut Maker from the electrical outlet when not in use and before cleaning to avoid accidental electrical shock. Allow it to cool before cleaning.
- As long as the appliance is hot, even if unplugged, there is the danger of getting burned. Do not touch and do not put it into storage while hot.
- Do not use the Mini Donut Maker for other than intended use.
- For use only on 110-120V, 60HZ power. Use an outlet with a good ground connection. Do not use three to two-way adapter on the three prong power cord provided.
- For interior household use only.

BEFORE THE FIRST USE

Remove all packaging materials.

Clean the baking plates with a damp cloth or sponge.

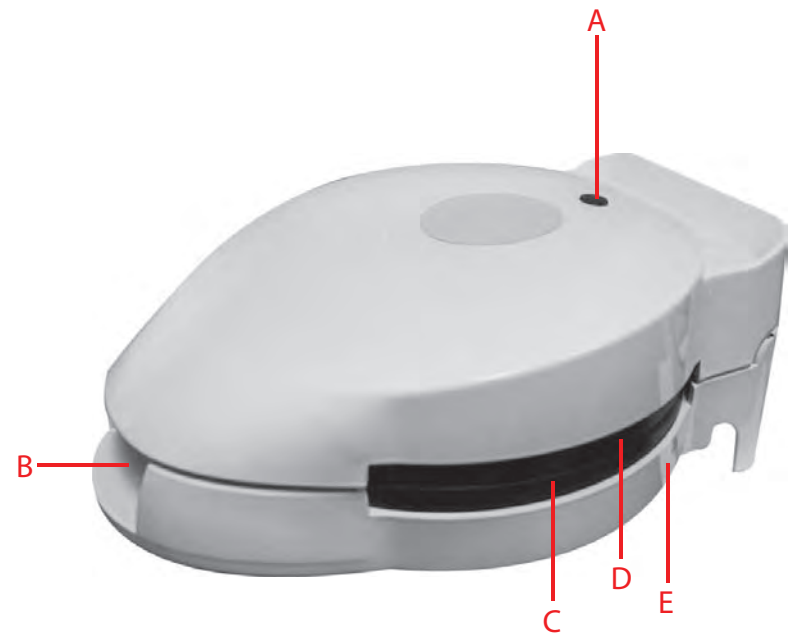
Slightly grease the baking plates with a little cooking oil.

Take care to prevent water from running into the appliance.

PARTS IDENTIFICATION

Before using the Donut Maker for the first time, you should become familiar with all of the parts.

Read all Instructions and Safeguards carefully.



- A. Power light/ Ready light
- B. Handle clip
- C. Baking plate
- D. Top shell
- E. Bottom shell

USING YOUR DONUT MAKER

Before using the appliance for the first time, peel off any promotional materials and packaging materials. Check that the cooking plates are clean and free of dust. If necessary, wipe with a damp cloth. For best results, pour a teaspoon of vegetable oil on to the non-stick plates. Spread over with an absorbent kitchen towel and wipe off any excess oil.

When the Donut Maker is heated for the first time, it may emit slight smoke or odor. This is normal with many heating appliances. This does not affect the safety of the appliance.

- Insert the plug into the power outlet. The ready indicator light will go on, indicating that the Donut Maker has begun preheating.
- Allow your Donut Maker to pre-heat until the ready indicator light goes out. The cooking plates have reached the correct temperature for cooking.
- For best results, lightly spray the cooking plates with a cooking oil spray before using. This will assist in the removal of the donuts after cooking.
- Pour mixture into donut wells as per recipe using a cup or piping bag.

Note:

Do not use disposable plastic piping bags as these may melt if they come into contact with hot plates.

- Gently close the lid, ensuring the handle clip is closed. Do not slam the lip down as it may cause the mixture to run off the cooking plates.

- Allow to cook for approximately 3- 5 minutes or until golden.
- To remove donuts, always use a plastic or wooden spatula. Never use a sharp object or metal, as this will damage the non-stick surface of cooking plates.

CLEANING AND CARE

- Always turn off the power and remove the plug after and before cleaning.
- The cooking plates are coated with non-stick cooking surface, therefore little cleaning is required. Simply wipe cooking plates with a damp cloth.
- Do not immerse the donut maker in water or other liquids.
- Do not use abrasive scouring pads, powders or cleaners.
- Do not place in the dishwasher.
- Before next use, lightly grease the cooking plates for easy removal of cooked donuts.

STORAGE

- Always unplug the Donut Maker before storage.
- Always make sure the Donut Maker is cool and dry before storing.
- To minimize storage space in your kitchen, the donut maker can be stored vertically.

TECHNICAL DATA

- Operating voltage: 110-120V~ 60Hz
- Power: 650-760W

90 DAY LIMITED WARRANTY

If there are any defects in material or workmanship during the first 90 days of purchase, we will repair/replace the product at our option. This warranty excludes any damages to the product resulting from accident or misuse.

Please read instructions carefully.

This warranty also excludes damages caused by shipping, mishandling or unit being dropped. To obtain service under this warranty, return this unit to the Mini Donut Service Center location. Please make sure to include a copy of the original receipt along with your name, address and phone number. Please include a description of the defect along with the date you purchased the product.

Please note: returns without receipt will not be accepted.

Canoga Park, CA 91304
service@smartplanet.net



BAKED FRENCH BREAKFAST DONUTS

Ingredients

5 tbsp. butter
1/2 cup sugar
1 egg, beaten
1 1/2 cup flour
2 1/4 tsp. baking powder
1/4 tsp. salt
1/4 tsp. nutmeg
1/2 cup milk
2 tbsp. melted butter
1/2 cup sugar
1 tsp. cinnamon

Mix butter and sugar thoroughly. Add egg and mix well. Sift flour, baking powder, salt and nutmeg together. Add dry ingredients alternately with milk. Fill pre-heated oiled Donut Maker with donut batter and bake for 3-5 minutes or until golden brown. Once done, take out of pan immediately and dip tops into melted butter, then sugar and cinnamon mixture.