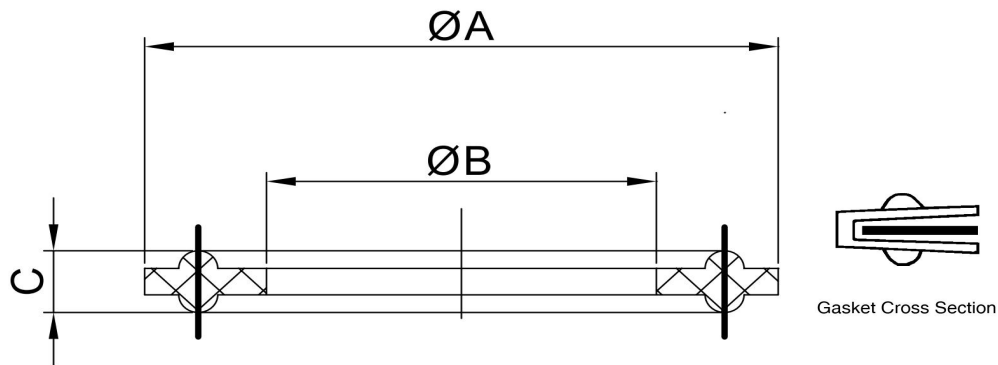


# Sanitary Tri-Clamp Gaskets Spec Sheet

— PTFE Envelope Tri Clamp Gasket w/ FKM Filler



**PTFE Envelope Tri-Clamp Gaskets** are the only choice when needing extreme chemical resistance and temperature range. These gaskets are extremely unique in their construction because they have a Viton filler for compressibility surrounded by an 'Envelope' of PTFE which creates a unique combination of chemical resistance while providing an exceptional sealing characteristic. Normal solid PTFE gaskets are very tough to seal on their own and are usually not recommended in vacuum applications due to the gasket being very rigid because PTFE is not very compressible by itself. Tri-Clamp/ Tri-Clover Sanitary Fittings Gaskets create a pressure-tight seam between multiple stationary components, relying on a compression seal to prevent unwanted gas or liquid



**Material: PTFE(Teflon)/Viton Filler(FKM)**

**Temp. Range: -4°F~356°F**

SKU	SIZE	ØA		ØB		C	
		in	mm	in	mm	in	mm
EXA-GASKET-VP-1.5IN	1 1/2"	1.988	50.5	1.378	35	0.205	5.2
EXA-GASKET-VP-2IN	2"	2.520	64	1.890	48	0.205	5.2
EXA-GASKET-VP-3IN	3"	3.583	91	2.835	72	0.205	5.2
EXA-GASKET-VP-4IN	4"	4.685	119	3.858	98	0.205	5.2
EXA-GASKET-VP-6IN	6"	6.575	167	5.827	148	0.205	5.2
EXA-GASKET-VP-8IN	8"	8.543	217	7.874	200	0.205	5.2
EXA-GASKET-VP-10IN	10"	10.551	268	9.764	248	0.205	5.2
EXA-GASKET-VP-12IN	12"	12.559	319	11.732	298	0.205	5.2

## Hardware Factory Store Inc.

1029 N Todd Ave. Azusa, CA 91702

TEL: 626.332.7744

E-MAIL: [info@hfsusa.com](mailto:info@hfsusa.com)

WEBSITE: <https://hardwarefactorystore.com/>

