



## Fast And Durable

Powerful 5HP C1D1 UL listed explosion proof motor  
 Recover hydrocarbon solvent at 18 CFM  
 Propane recovery rate up to 6.5lbs/min  
 Butane recovery rate up to 4.7lbs/min  
 12months run time without maintenance  
 1"JIC inlet and outlet ports

## High performance

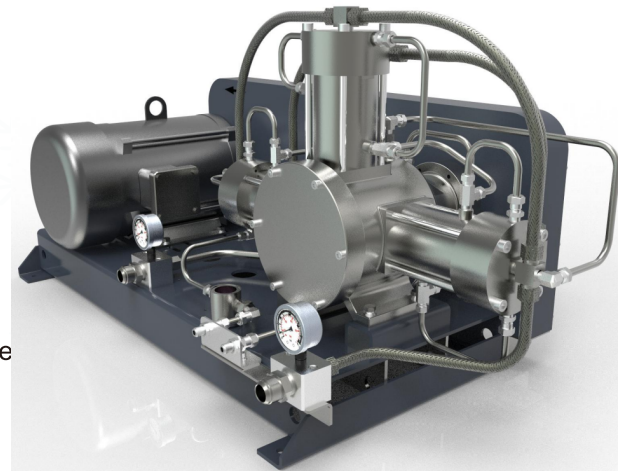
Specially designed and engineered for large extractors  
 Water cooling pump head removes heat  
 Reliable magnetic fluid sealing technology  
 No leakage under high back pressure  
 Operates up to 217.5PSI for butane and propane including mixture  
 Pull deep vacuum vacuum at -28inHg  
 Comes with single phase and three phase model




## Certifiable

Certified by 3<sup>rd</sup> party for hydrocarbon extraction  
 UL listed explosion proof motor for C1D1 hazardous locations  
 Compliant with NFPA and UL explosion proof standard

## Our Service

One year manufacturer's warranty with US based service  
 Authorized service centers cover different states



| Performance Data             |                                                                                                                                                                         |                                                                                                           |
|------------------------------|-------------------------------------------------------------------------------------------------------------------------------------------------------------------------|-----------------------------------------------------------------------------------------------------------|
| Compressor Displacement      | 18.3CFM                                                                                                                                                                 |                                                                                                           |
| Max Propane Recovery Rate    | 6.5lbs/min                                                                                                                                                              |                                                                                                           |
| Max Butane Recovery Rate     | 4.7lbs/min                                                                                                                                                              |                                                                                                           |
| Max Pumping outlet pressure  | 175PSI                                                                                                                                                                  |                                                                                                           |
| Inlet&outlet size            | 1 in JIC male                                                                                                                                                           |                                                                                                           |
| Ultimate vacuum Degree       | 28inHg                                                                                                                                                                  |                                                                                                           |
| Pump Head Cooling Way        | Water                                                                                                                                                                   |                                                                                                           |
| Equipment Withstand Pressure | 406PSI                                                                                                                                                                  |                                                                                                           |
| Noise                        | 75dBa                                                                                                                                                                   |                                                                                                           |
| Explosion Proof Motor        |                                                                                                                                                                         |                                                                                                           |
| CMEP-710PRO-1PH              |                                                                                                                                                                         |                                                                                                           |
| Horsepower                   | 5HP                                                                                                                                                                     |                                                                                                           |
| Speed                        | 1725RPM                                                                                                                                                                 |                                                                                                           |
| Voltage                      | 230V 60Hz 1PH                                                                                                                                                           |                                                                                                           |
| Max Amperage Load            | 21A                                                                                                                                                                     |                                                                                                           |
| Motor Approval               |   | Class I Division I Group D T2C<br>Class II Division II Group F&G T2C                                      |
| CMEP-710PRO-3PH              |                                                                                                                                                                         |                                                                                                           |
| Horsepower                   | 5HP                                                                                                                                                                     |                                                                                                           |
| Speed                        | 1765RPM                                                                                                                                                                 |                                                                                                           |
| Voltage                      | 230V 60Hz 3PH                                                                                                                                                           | 460V 60Hz 3PH                                                                                             |
| Max Amperage Load            | 13.3A                                                                                                                                                                   | 6.6                                                                                                       |
| Motor Approval               |                                                                                      | Class I Division I Group C&D T3C<br>Class II Division I Group F&G T3C<br>Class I Division I Group C&D T2B |
| Materials                    |                                                                                                                                                                         |                                                                                                           |
| Compressor                   | Stainless Steel                                                                                                                                                         |                                                                                                           |
| Pipeline&Valve               | Stainless Steel                                                                                                                                                         |                                                                                                           |
| Piston Ring                  | PTFE                                                                                                                                                                    |                                                                                                           |