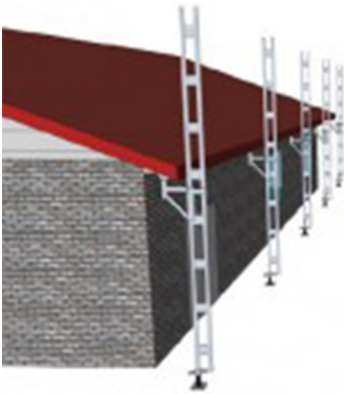




STEP 1: Measure the height to the underside of eaves and place the cantilever bracket at correct height on the easyrail post.



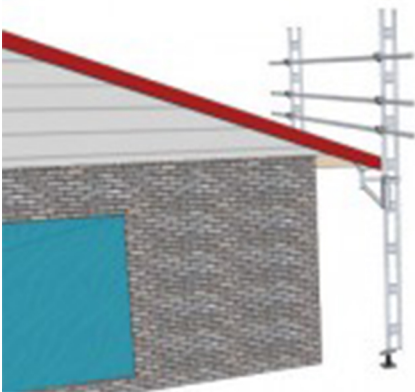
STEP 2: Place base of post over a screw jack and lean against the roof edge of the building. Repeat and space no more than 4m to desired length.



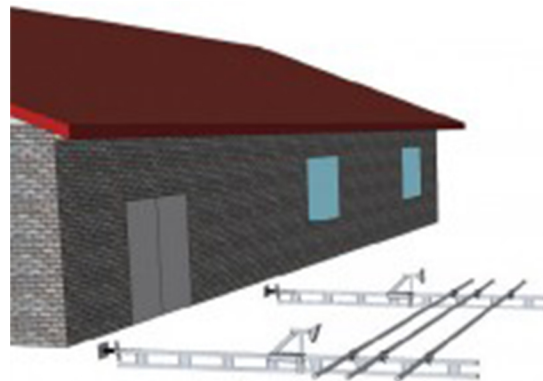
STEP 3: Adjust the screw jack until the cantilever bracket is held firm under the eaves. Ensure the post is vertical and the cantilever bracket is under a solid member if required, fix bracket to underside of eaves.



STEP 4: Using a ladder, place rail coupler at a point 200mm above the roof line. Fix 2 more couplers at 500mm and 1000mm above this same point. Ensure the coupler “tongues” are positioned facing upwards to hold handrail.



STEP 5: Using a ladder, place the aluminium tube rails in position, then tighten each coupler.

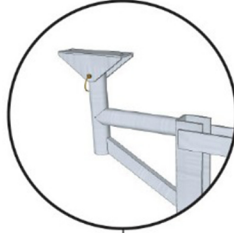


STEP 6: If 2 people are available then the horizontal rails can be fitted to the posts while on the ground. Lift the complete assembly into place and tighten screw jacks under the eaves.

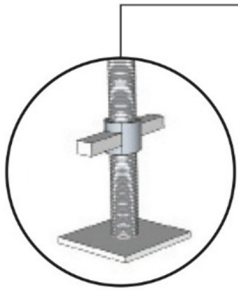
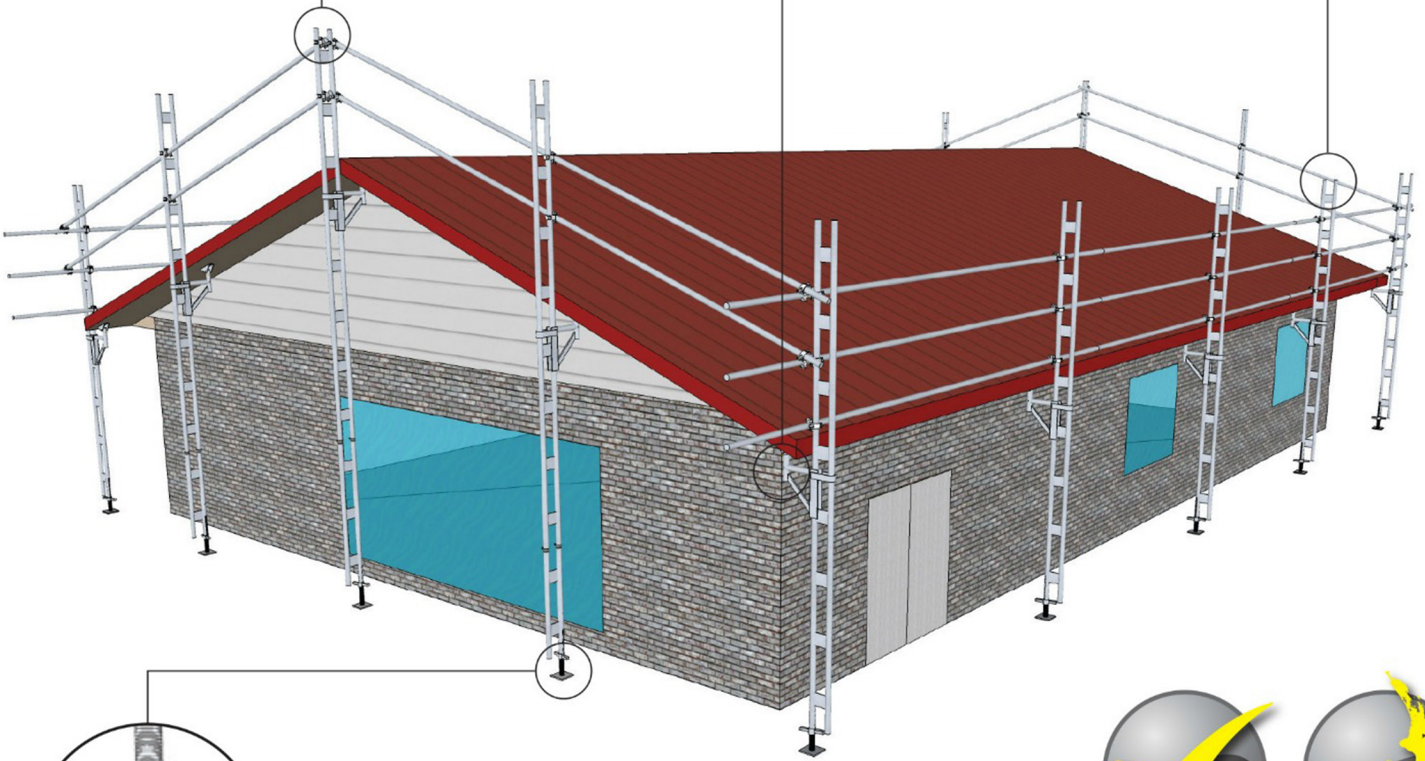
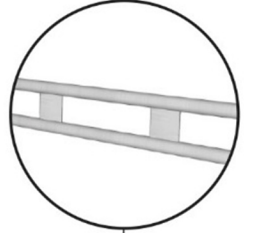
SWIVEL COUPLER



CANTILEVER BRACKET



EASYRAIL POST



COMPLIES TO
AS/NZS
4994 : 2009



MADE IN
NEW ZEALAND