

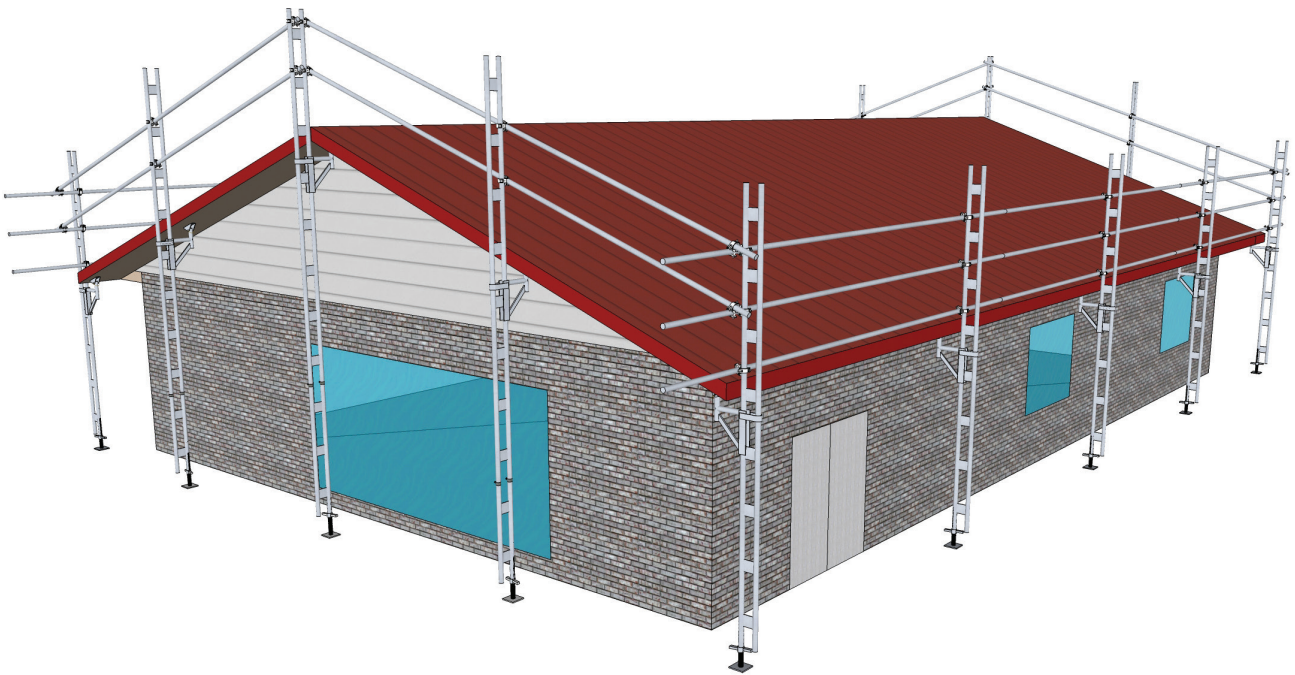


Reach it the **easy** way

EDGE PROTECTION SYSTEMS

OPERATIONAL SAFETY AND ASSEMBLY INSTRUCTIONS FOR ALUMINIUM PLATFORM EASY RAIL

ALUMINIUM EASY RAIL SYSTEMS



Users of the **Easy Access Platform Edge Protection System** - please read the following instructions carefully and do not erect or use system until the instructions have been read and understood.

We strongly suggest that users be familiar with and follow the “**Temporary edge protection standard**”, and ‘**Scaffolding**’ **AS/NZS 1576. 2013**. These are available from **Standards Australia** and **NZ**.

Further information is available in the SARNZ publication; “**Best Practise guidelines for Scaffolding in NZ**”

More information is also available at www.workcover.nsw.govt.au and www.dol.govt.nz

FREEPHONE 0800 394 222

sales@easyaccess.co.nz www.easyaccess.co.nz



Reach it the **easy** way

MAINTENANCE

All Easy Rail platform edge protection components must be checked regularly for damage such as dents, cracks, buckling and the like. If found the system must not be used. Damaged or missing components are easily replaced, and must be so before further use.

The following components in particular must be checked against the relevant criteria:

- Roof Posts, Base Frames and Aluminium Tube: Ensure all tube has a minimum OD of 48mm, and there are no dents, buckling, pits, deep scoring, twisting, weld cracks or bends or in them.
- Cantilever Platform Support Bracket: Check structure for the same defects as detailed in (1). Ensure the retaining bolt is in place.
- Screw Jacks: Ensure that the threaded stem is kept well lubricated and the nut cannot travel closer than 150mm to the end of the spindle. The base plate must sit flat on the support surface.
- Couplers and Joining Spigots: Ensure the manufactures name is stamped on the coupler and there is no twisting, cracks, splitting, stripped threads, missing or stretched rivets or nuts on any coupler or spigot.

Your supplier can assist with replacing or trading damaged components and is able to give advice and/or assistance.

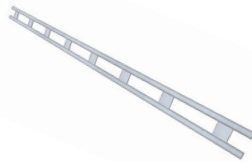
ASSEMBLY / COMPONENTS

The Easy Rail system consists of the following components:

Platform Support Bracket



Easy Rail Roof Post



Screw Jacks



Outriggers



Aluminium Easy Rail Tube



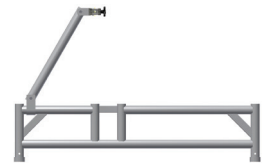
90° Fixed Couplers



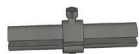
Swivel Coupler



Base Frame



Internal Joining Spigot



Back Brace

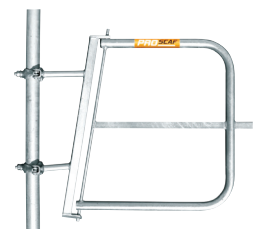
3m Platform



3m Ledger



Proscaf Swing Gate



INSTALLATION / DISMANTLING

Define the full work zone to be protected and how it will be accessed. A minimum of two staff members will be required to erect the Platform Easy Rail Edge Protection System. Tools that will be required in the assembly of Platform Easy Rail are: Adjustable wrench or socket, level, tape measure, inclinometer, ladders and suitable sole plates if the support surface is unable to effectively carry the imposed load of the system.

- Measure the height of the building fascia line and select the applicable Easy Rail post length. The post should extend at least 1050mm above the fascia line. In the case of gable ends check the fascia line height at intervals no greater than the length of the work platforms being used measured horizontally. Easy rail posts should not be joined longitudinally when supporting a work platform. Note; the maximum length of the post should not exceed 5mtrs.

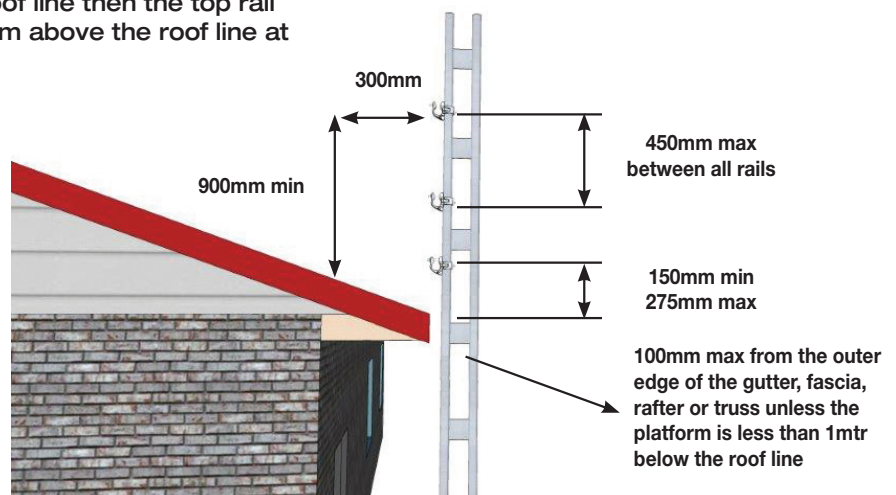
The Easy Rail system is designed primarily for residential use. The maximum height of the work platform must not exceed 4.5 metres.

INSTALLATION / DISMANTLING

- For gable end roof edge protection a top rail, and mid hand rail is the minimum requirement, roof slopes greater than 10° from the horizontal require three tube hand rails. **In no circumstances shall tube rails extend unsupported more than 1000mm past an Easy Rail post.**

Instructions for the erection of Easy Rail Platform edge protection with a maximum platform height of 2.5m (single story)

- Slide a platform support bracket over each Easy Rail post. Attach 3 x 90° couplers to the top of the post spaced at 450mm nominal centres from the top. **Note: The coupler tongues should face upwards on the post to assist with installing the tube hand rails.**
- Insert 2 screw jacks into the sleeves on a Base frame and set it up at one corner of the building. Take care to position it so that the platform support bracket will hold the platform no more than 225mm away from the wall. Adjust the screw jacks to ensure the base frame is firm and level on the support surface. Add suitable sole plates under the screw jacks if the support surface is not sufficiently firm enough to support the platform loading.
- Position the second base frame down the wall at the correct spacing to ensure the work platform will fit on to the platform support bracket. Attach a ledger rail to one of the posts sleeve receptacles on each base frame to space them correctly. Continue to position base frames along the wall repeating steps 4 and 5. **Note: The maximum distance base frames can be spaced apart is 4mtrs.**
- Insert Easy Rail posts into expanding spigots set into the sleeve receptacles on the first and second base frame and firmly tighten the spigot bolts. Attach a ledger rail to both posts approximately 2mtrs up the post to hold them upright. Attach an angle brace to the base of the first post and to the upper section of the second post. Use a spirit level to ensure that both posts are standing exactly vertical and tighten the angle brace wing nuts firmly. Continue to attach Easy Rail posts to the base frames along the wall attaching a ledger rail at approximately 2mtrs up each post to keep them vertical. **Note: Angle braces must be spaced no further apart than every 4th bay.**
- Once the section of wall has the base frames and posts set up, re-check the posts to ensure they are held vertical by the angle brace and ledgers. Re-check the height of the platform support brackets to ensure the platform location will be correct. **Note: If the post is more than 150mm away from the building fascia or gutter line then the platform support bracket must be no more than 1m below the line of the fascia or gutter.** Place the work platforms on the platform support brackets along the length of the wall.
- Attach tube hand rail and mid rail to the platform side of the posts using 90 degree scaffold castors. The handrail must be between 0.9m and 1.1m above the platform and the midrail between 0.45m and 0.55m above the platform. Ensure the scaffold coupler nuts are firmly tightened. Note: Handrail tubes are joined together using expanding spigots. Once the handrail tubes are all in place then the upper clip-on ledgers can be removed and used elsewhere. **Note: the bottom clip-on ledgers must not be removed.** If the platform is higher than 2m from the support surface then suitable toe boards must be attached to the posts on the outside of the platform. Scaffold planks attached with Putlog couplers are acceptable to be used as toe boards.
- Once the platforms and platform handrails are in place then the edge protection guardrails must be attached to the posts using 90 degree scaffold couplers. **Note: attach the scaffold couplers to the posts with the coupler 'tongue facing up to assist with positioning the guardrails.** The couplers and tube must be positioned on the posts according to the following parameters:
 - The top rail shall be not less than 900mm above the surface when measured 300mm in from the roof edge. The Easy Rail system is not designed for roof slopes greater than 35° to the horizontal. **Note: If the platform is no more than 1mtr below the roof line then the top rail must be not less than 900mm above the roof line at the gutter.**
 - Distance between the rails shall not be less than 450mm.
 - The vertical distance between the lowest rail and the roof edge shall not be less than 150mm and not greater than 275mm.
 - Ensure the three tube rails are as close to parallel as possible.



EXTRA HEIGHT FRAMES

1. Re-check that all coupler and spigot bolts/ nuts are firmly tightened and that the handrail height dimension requirements are complied with. Re-check that the inner edge of the platform is no further than 225mm away from the edge of the building and there is a clear 450mm of platform width outside the fascia or gutter line. **Note: if the platform edge is required to be further than 225mm away from the edge of the building due create a minimum clear working width of 450mm then handrail posts to support handrails can be attached to the inner sleeve of the platform support brackets using expanding spigots. (Contact your supplier for further details).**

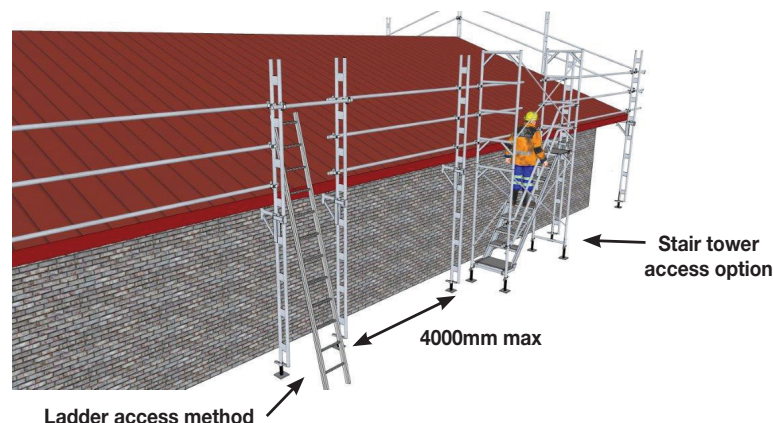
INSTALLATION / DISMANTLING

2. Starting from the next corner repeat steps 1 - 10 down the second wall. **Note: the first post on the second wall on any corner must attach to the ends of the platform and edge protection guardrails/handrails from the first wall using 90 degree scaffold castors.**
3. Gated entry points can be established at any external corner; there must be at least one per building. The gate is fixed to the post using single scaffold couplers and must open into the platform. The top of the gate must be 1.0m above the platform. See fig... for set up details.

Further instructions to set up the double story Platform easy rail system.

Step 1: The Platform Easy rail base frames attach to standard Easy Access open H frames or Multi-cross frames. Set up the H frames using screw jacks to adjust the frames to the correct height and level and attach cross braces to hold the frames vertical. (See additional H-Frame instruction manual for more detail on the safe erection of the frames).

Step 2: Continue to set the H-frames up along the two story wall or gable end. Next attach the Platform easy rail base frames to the top of the H-Frames and continue through steps 3-12 around the building. **Note: platforms can be placed temporarily on the top transom of the H-Frames to assist in erecting the Platform easy rail system. These can be removed once the system is erected.**



TRANSPORTATION / STORAGE

The Easy Rail system can be transported on any suitable vehicle including heavy duty roof racks. The posts and tubes must be securely fastened to the vehicle. Easy Rail components may be stored outside.

TESTING

The Easy Rail system has been designed and tested according to the dynamic test requirements outlined in AS/NZS 4994.1:2009 and the test requirements outlined in AS/NZS 1576.1, 3, 2013.

THANK YOU FOR TAKING THE TIME TO READ THESE INSTRUCTIONS, AND FOR PURCHASING YOUR EASY ACCESS PLATFORM EASY RAIL SYSTEM.

The manufacturers or supplier will not accept liability for injury or damage resulting from product failure due to misuses, abuse, faulty installation and alteration, lack of reasonable care, lack of adequate training, use not listed under these Operational Safety Instructions or any other failure not related to defects in materials or manufacture.

FREEPHONE 0800 394 222

sales@easyaccess.co.nz www.easyaccess.co.nz

EASY
ACCESS Co



Reach it the **easy** way