

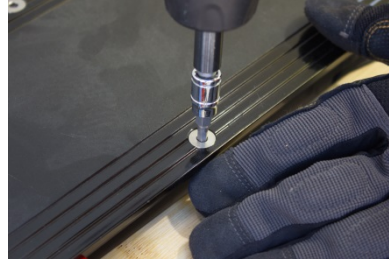
How to replace the wheel



▶ A DEMOUNT



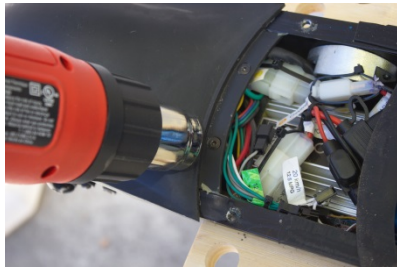
A0. Prepare the tools.



A1. Release 8 screws of foot deck. (by using H3 hex driver)



A2. Take off the rubber piece to expose and release the screws.



A3. Remove the foot desk and use a **heat gun** to melt the thread-locking glue on the screws. Then take off the rear fender. (There are 5 screws to lock the rear fender. The front of two screws are using H2.5 and the others is using H3 hex driver)



A4. Remove the hall sensor and motor connection.

▶ **A**
DEMOUNT



A5. Use a heat gun to melt the glue on all of screws and start to release the screws.(by using H3 and H6 hex driver)



A6. Pull down the wheel and separate the brake plate.



A7. Wheel is now demounted.

▶ B

INSTALL



B0. Align the mount to the wheel.



B1. Put together the wheel and brake plate, insert it back to the scooter.



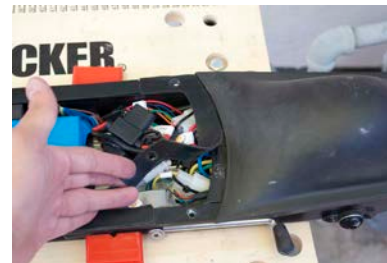
B2. Lock the wheel and put the rear fender back.



B3. Connect the hall sensor and motor connectors.



B4. Screw the rear fender back on, then to put the rubber piece back on top.



B5. Screw the foot deck on.
Installation is done.