



Welcome to a new world of metal flake products and application methods.

This factory colour card shows you the vast array of colours we supply through our dedicated and exclusive dealer network.

We source the best polyester foils available on the market today, lightfast, micro cut and quality inspected throughout manufacture. Watch our many video's produced by our distributors, dealers and ourselves or if you prefer - speak to your dealer for technical advice as we support and train them to support you so that you get the best result in the most efficient way you possibly can.

Our flakes are best applied dry using our very own Flake King dry flake guns and airbrush accessories and are supplied in ready to use jars.

If you prefer to apply flake by the old "wet" method then please follow our mixing guidelines in yellow text next to their flake sizes below, please note these are purely guidelines.

Size availability is shown in red next to each colour

U) Ultra Small
 .002"
 50 Micron



Imperial:
 1.1 oz per
 35 Fluid oz carrier
 Metric:
 30 Grams per
 1000ml carrier

S) Small
 .004"
 100 Micron



Imperial:
 1.4 oz per
 35 Fluid oz carrier
 Metric:
 40 Grams per
 1000ml carrier

M) Medium
 .008"
 200 Micron



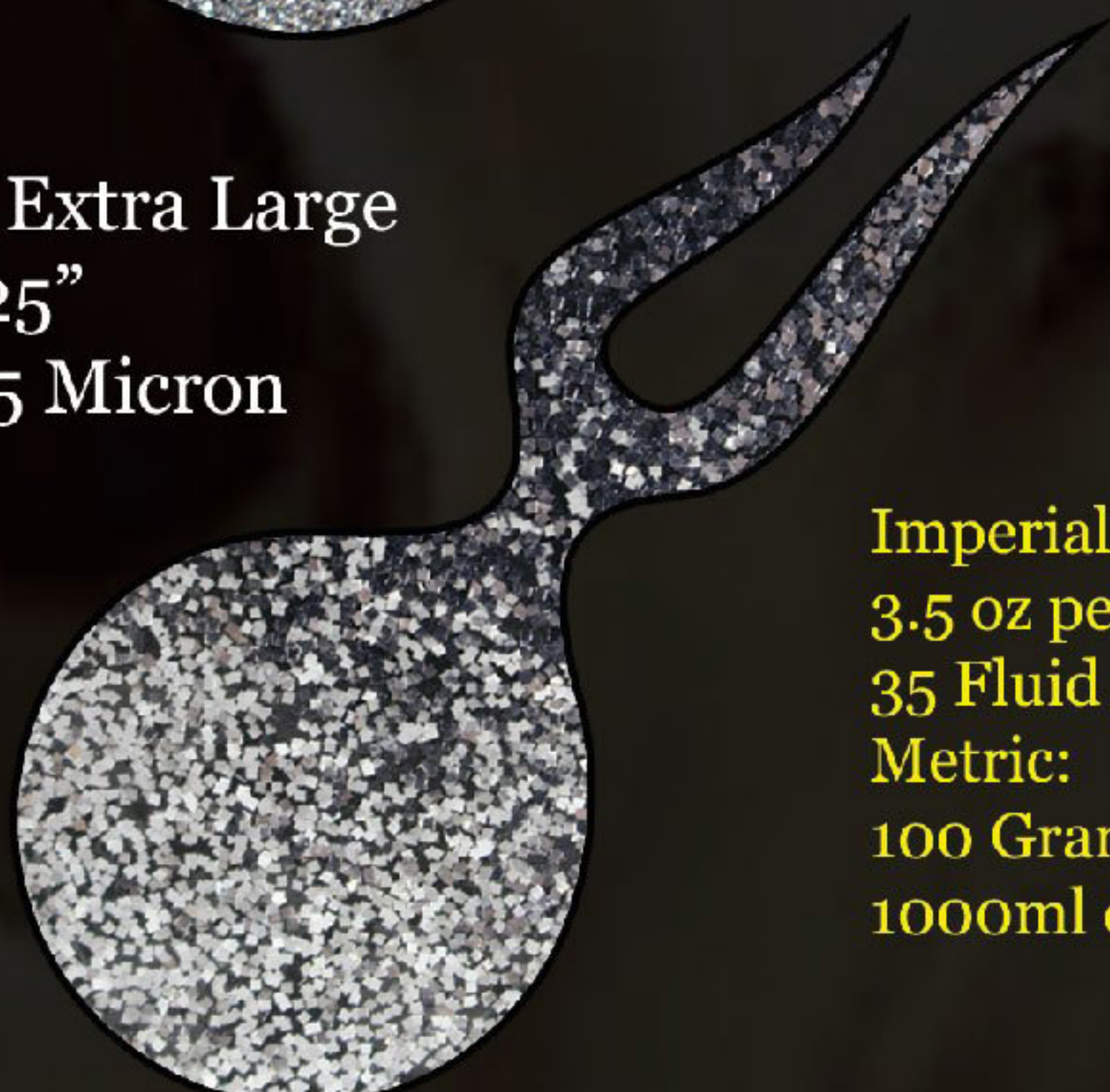
Imperial:
 2.1 oz per
 35 Fluid oz carrier
 Metric:
 60 Grams per
 1000ml carrier

L) .Large
 015"
 375 Micron



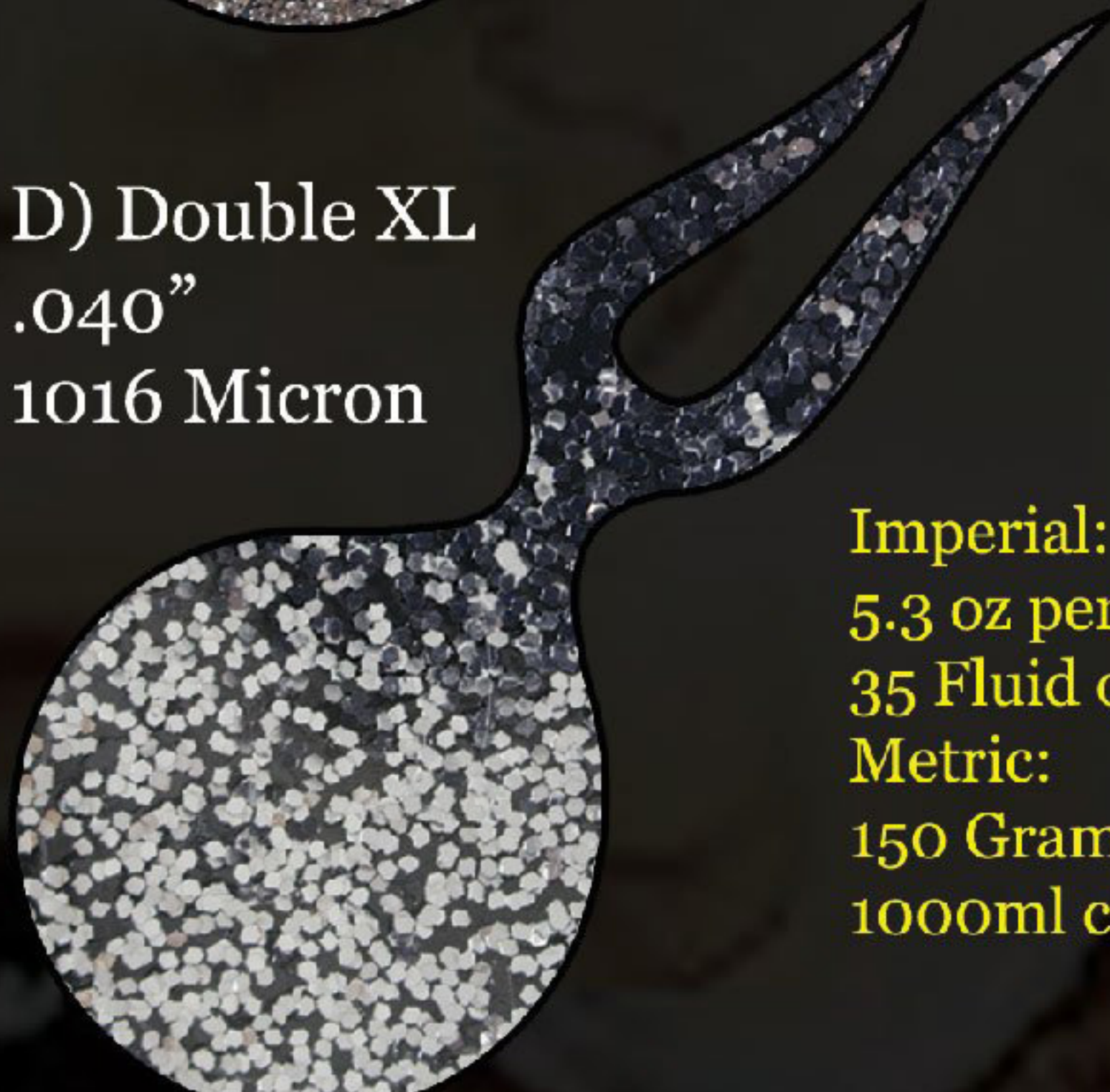
Imperial:
 2.8 oz per
 35 Fluid oz Carrier
 Metric:
 80 Grams
 per 1000ml carrier

X) Extra Large
 .025"
 675 Micron



Imperial:
 3.5 oz per
 35 Fluid oz carrier
 Metric:
 100 Grams per
 1000ml carrier

D) Double XL
 .040"
 1016 Micron



Imperial:
 5.3 oz per
 35 Fluid oz carrier
 Metric:
 150 Grams per
 1000ml carrier

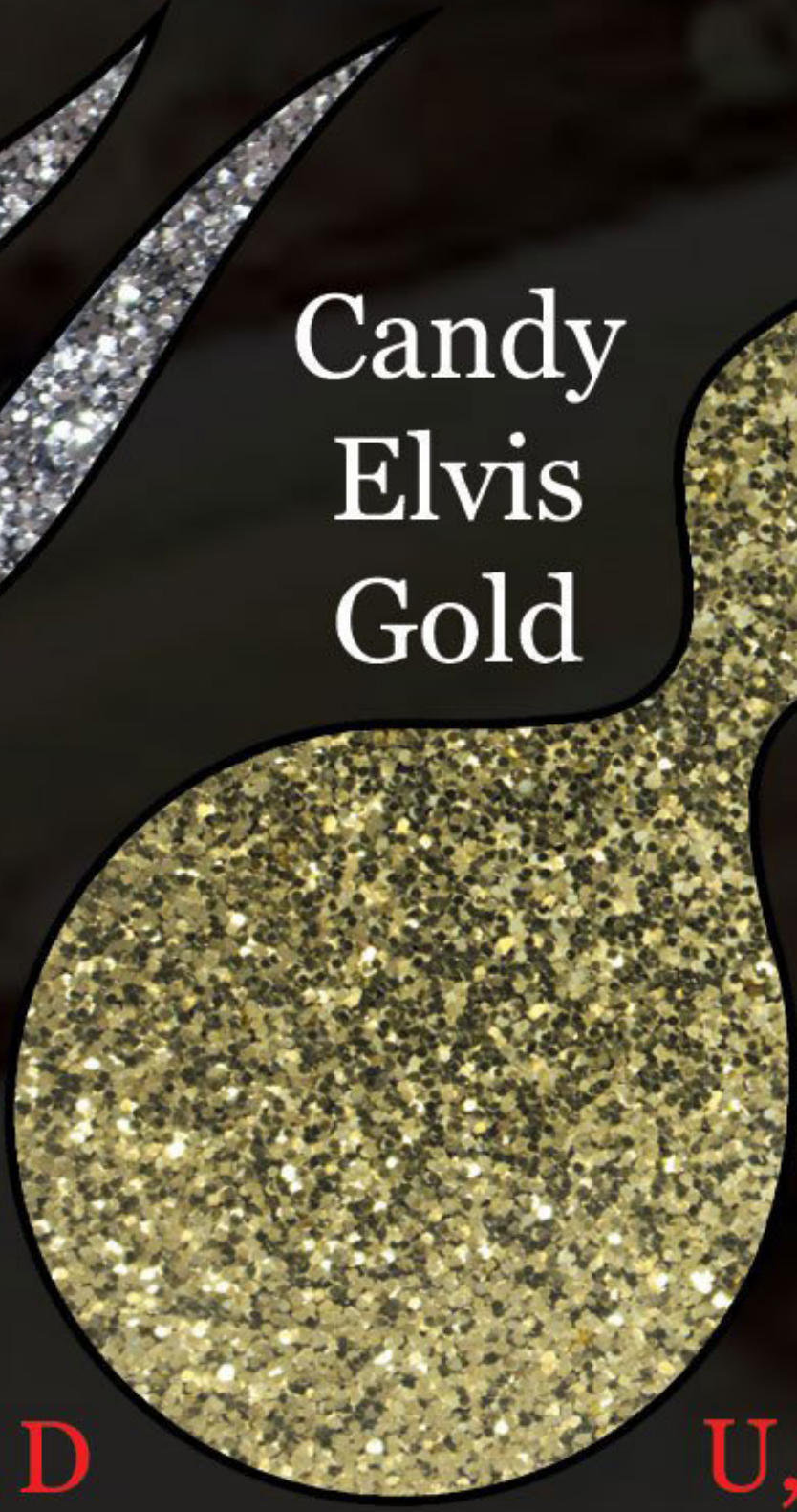


Show
Krome



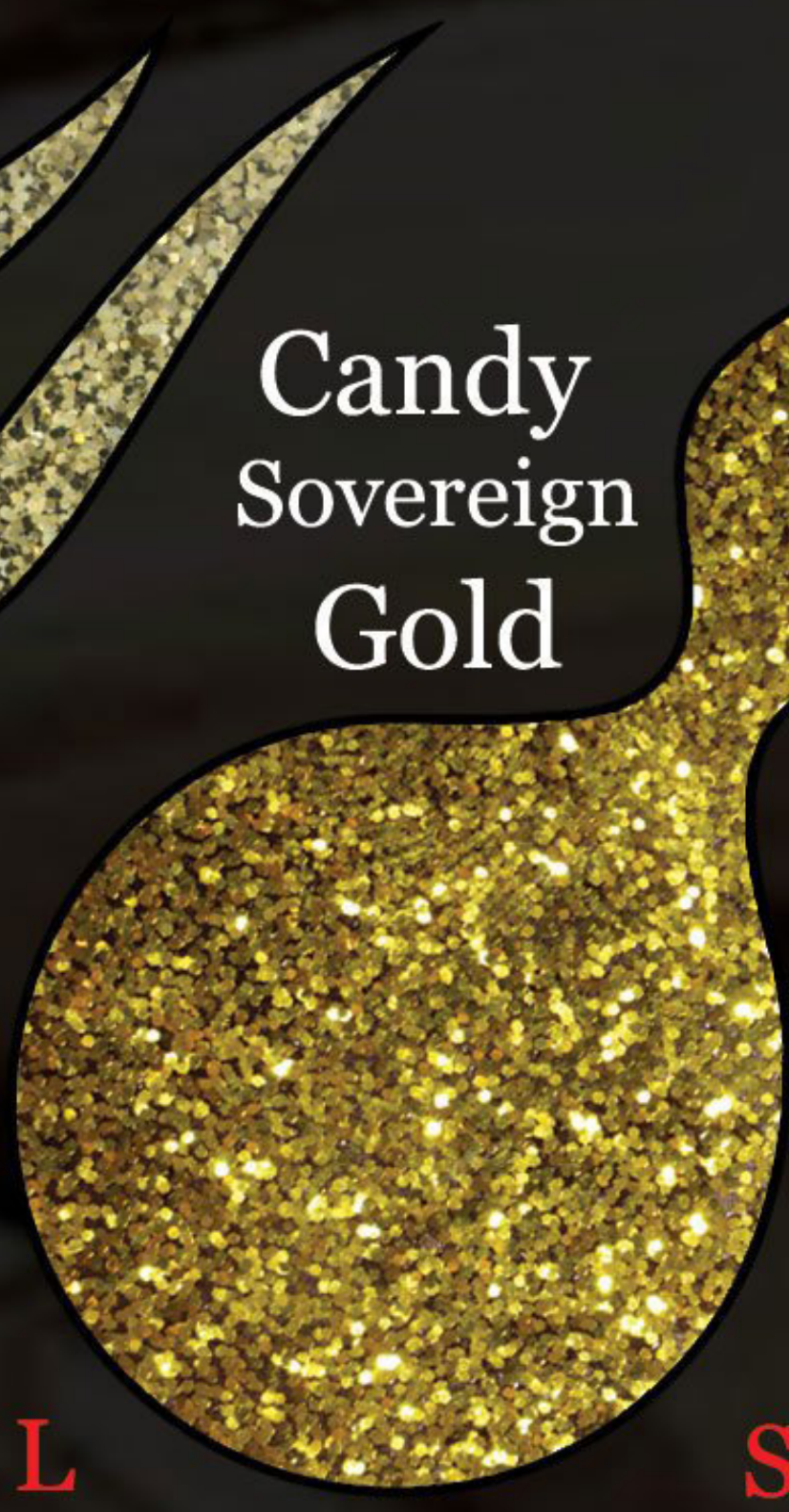
U, S,
M, L, X, D

Candy
Elvis
Gold



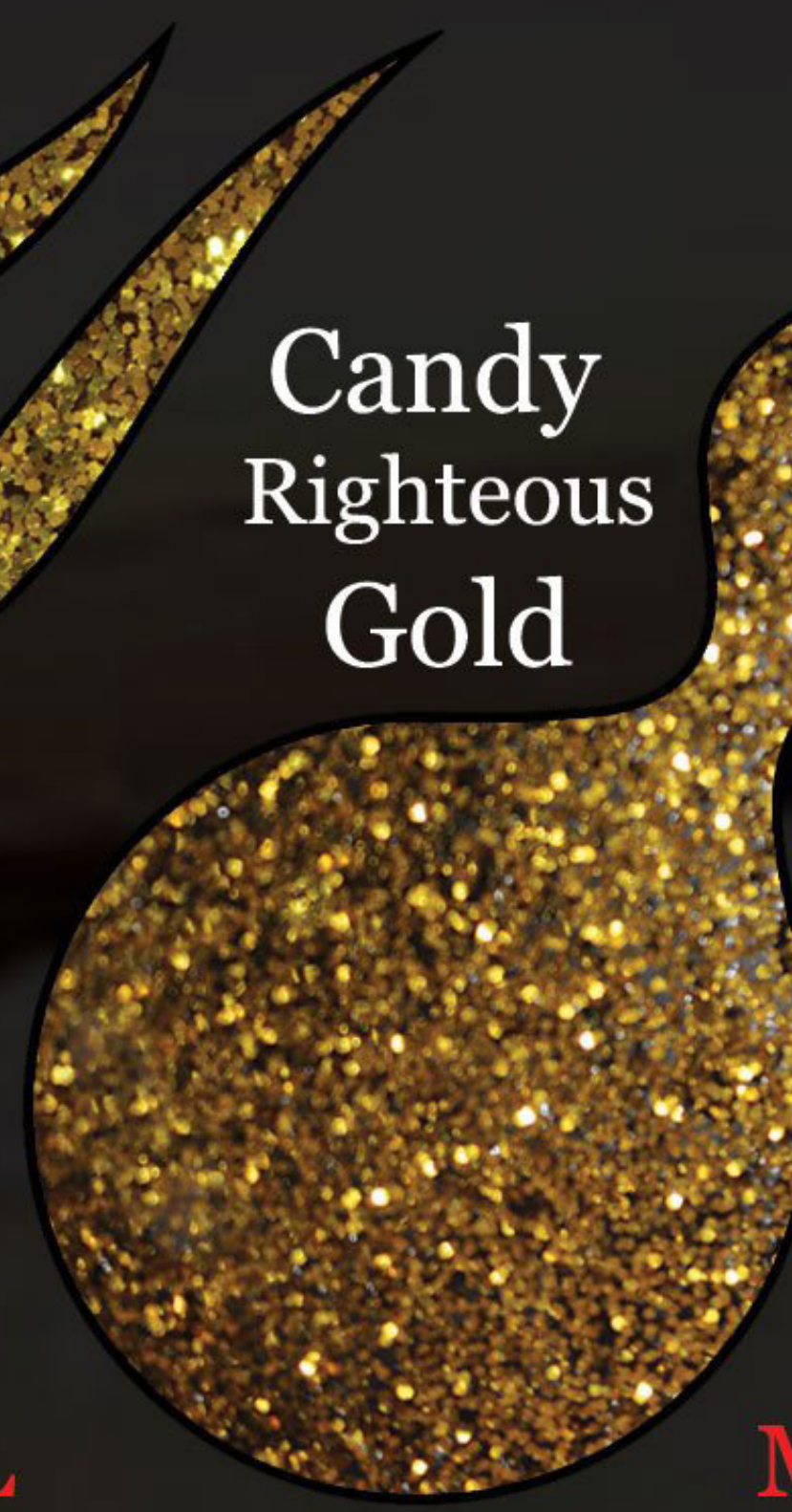
U, S, M, L

Candy
Sovereign
Gold



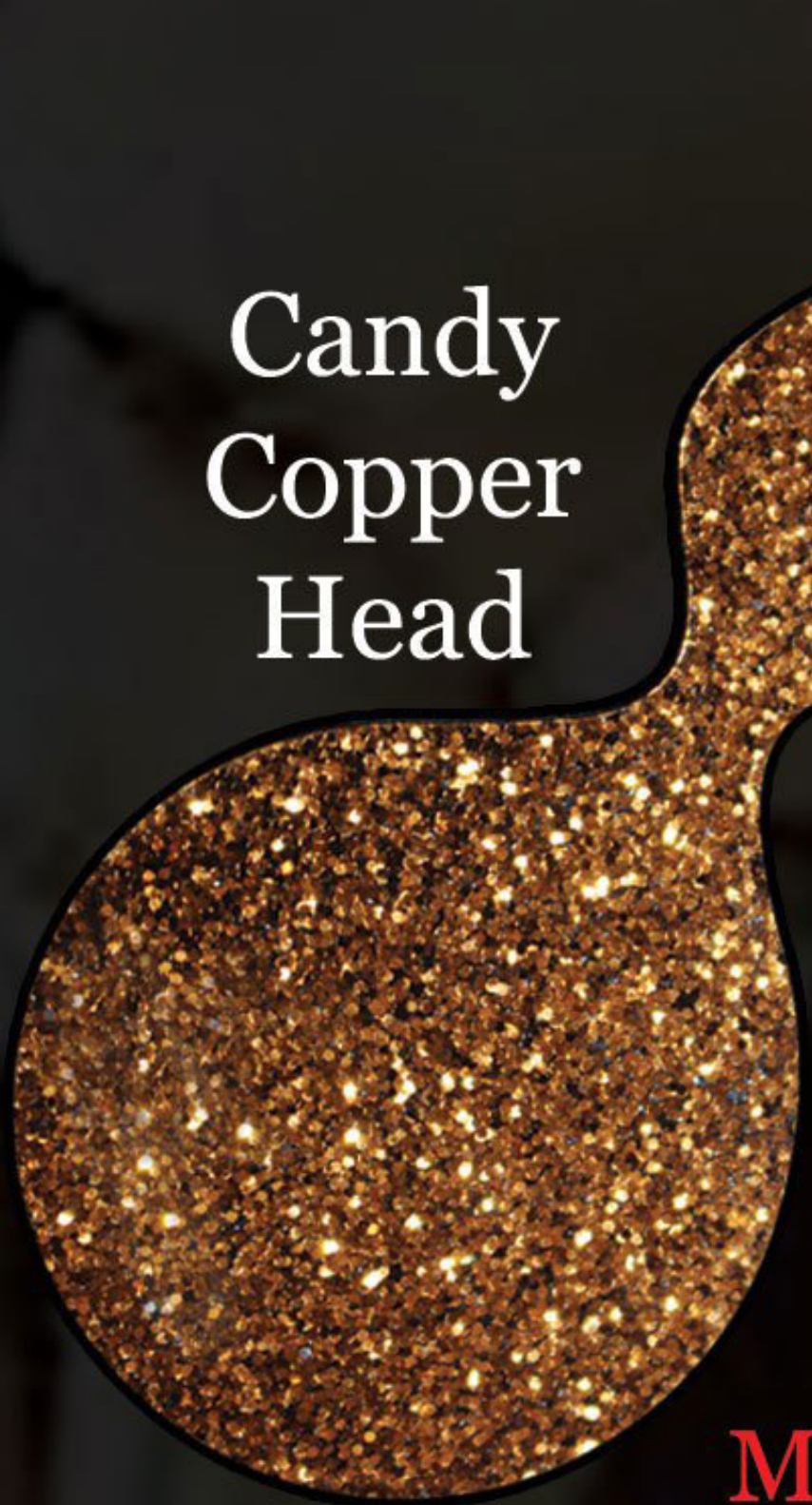
S, M, L

Candy
Righteous
Gold



M, L

Candy
Copper
Head



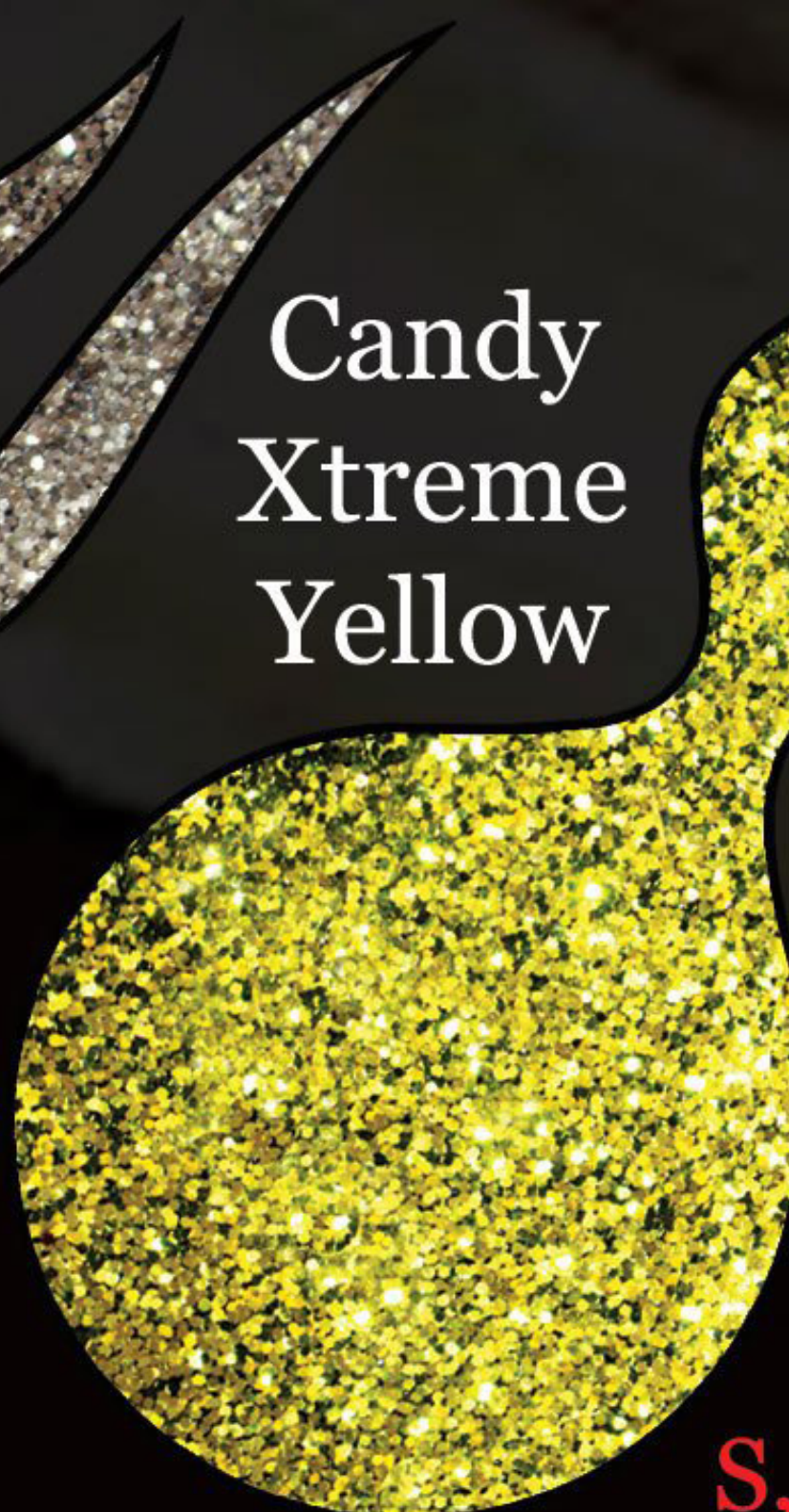
M, L

Nevada
Sands



M, L

Candy
Xtreme
Yellow



S, M, L

Candy
Tangy
Orange



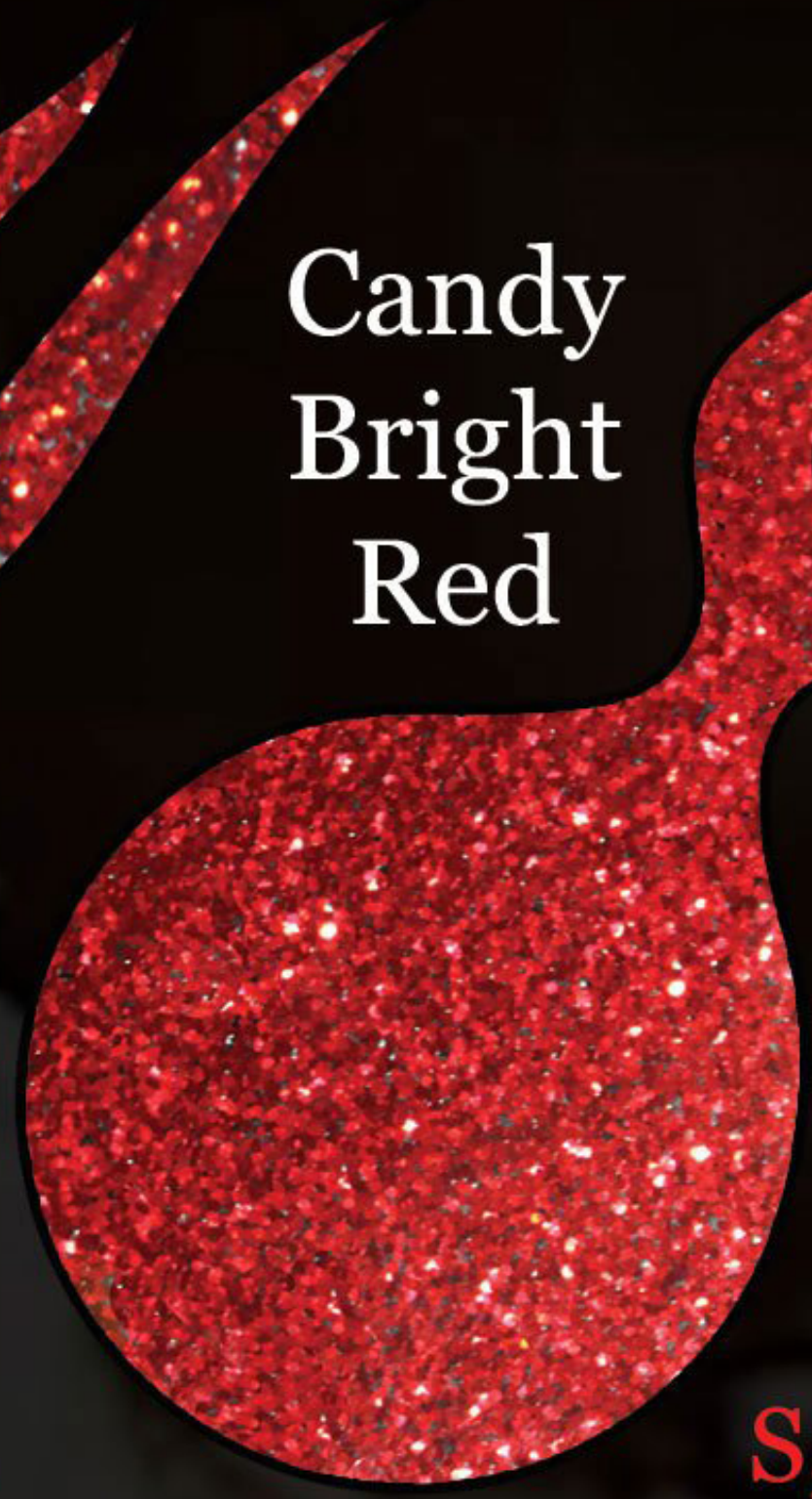
S, M, L

Candy
Apple
Red



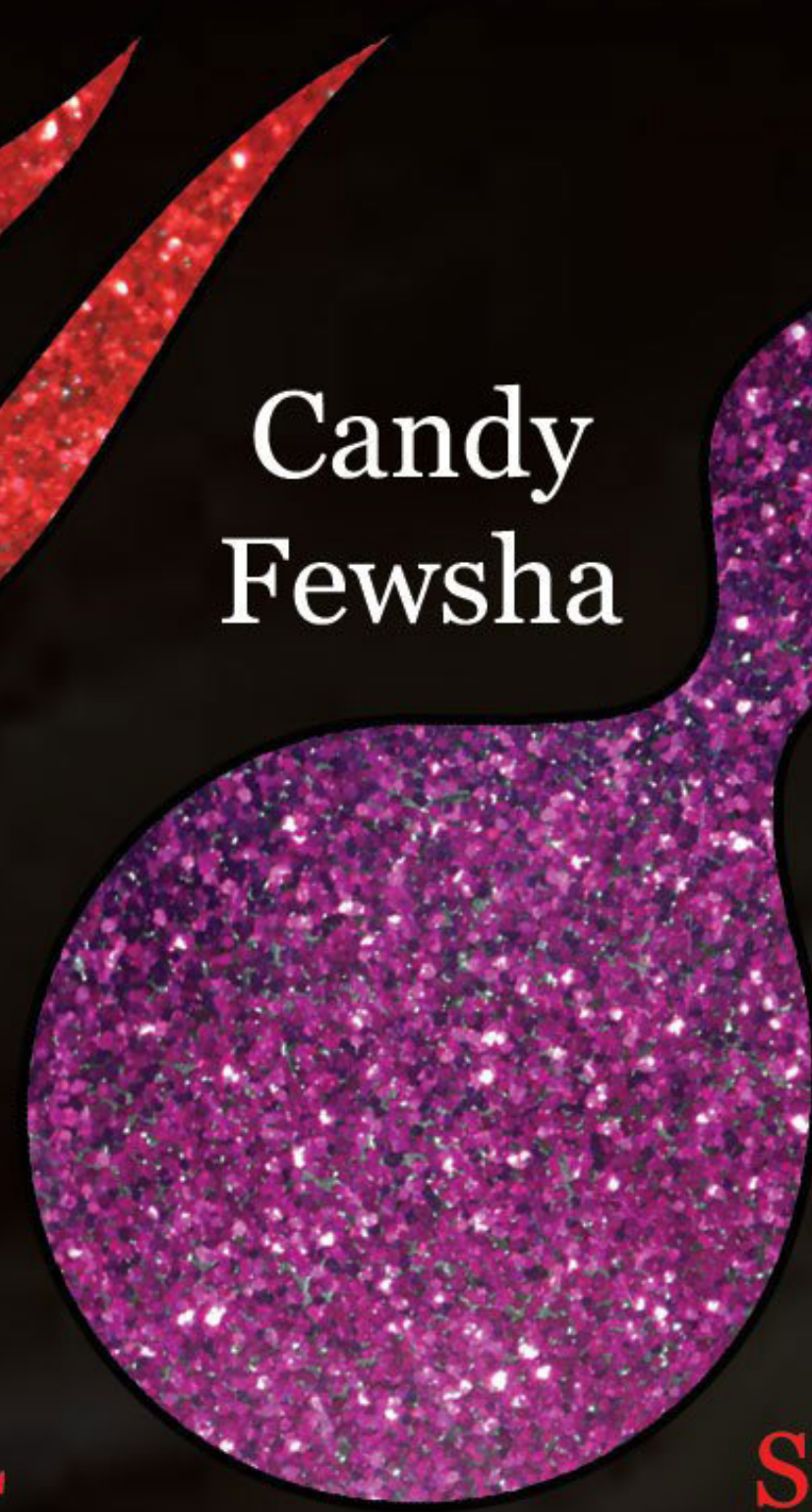
S, M, L

Candy
Bright
Red



S, M, L

Candy
Fewsha



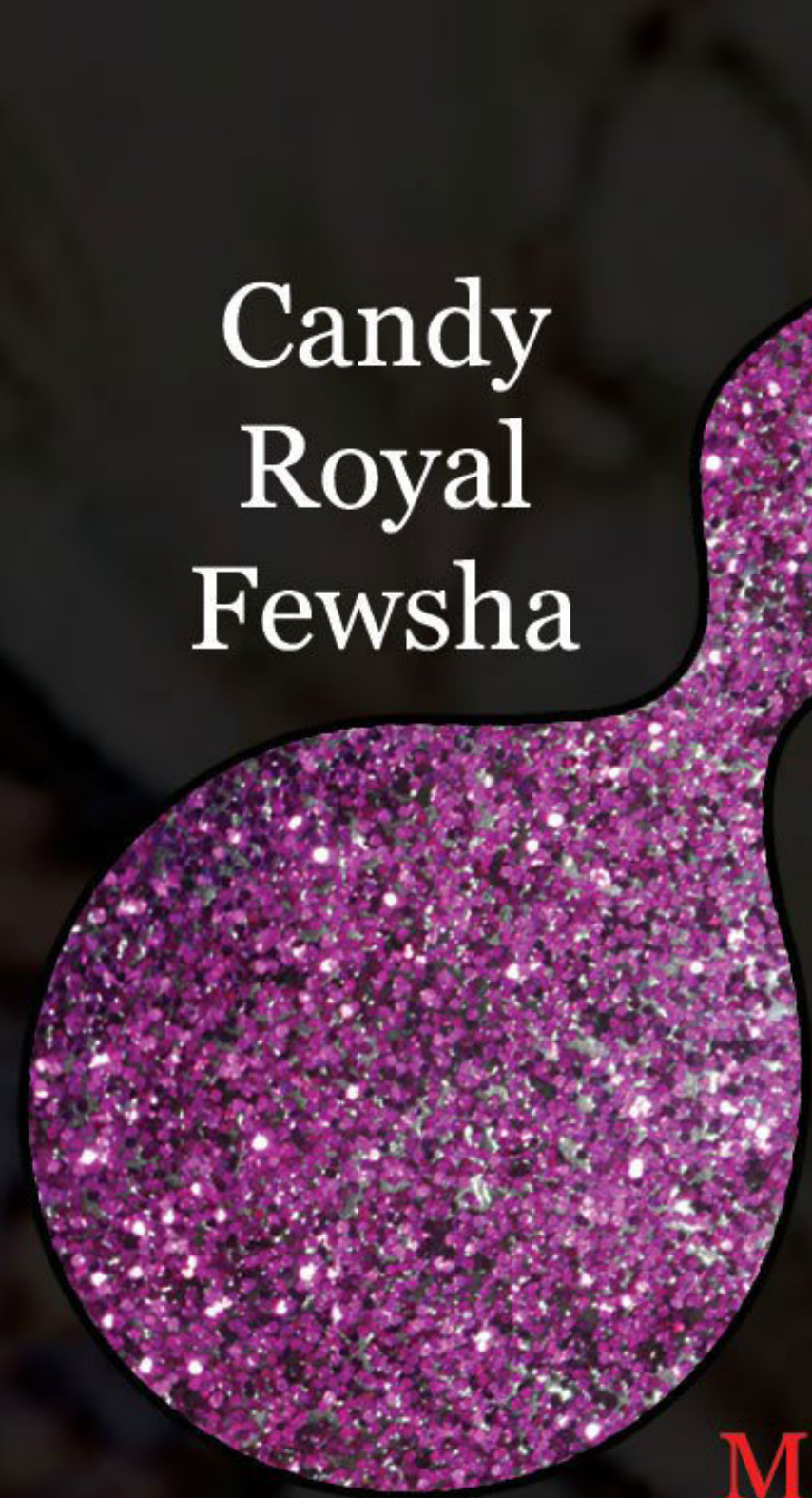
S, M, L

Candy
Pink



M, L

Candy
Royal
Fewsha



M, L

Candy
Purple
Heart



S, M, L

Candy
Lime
Green



M, L

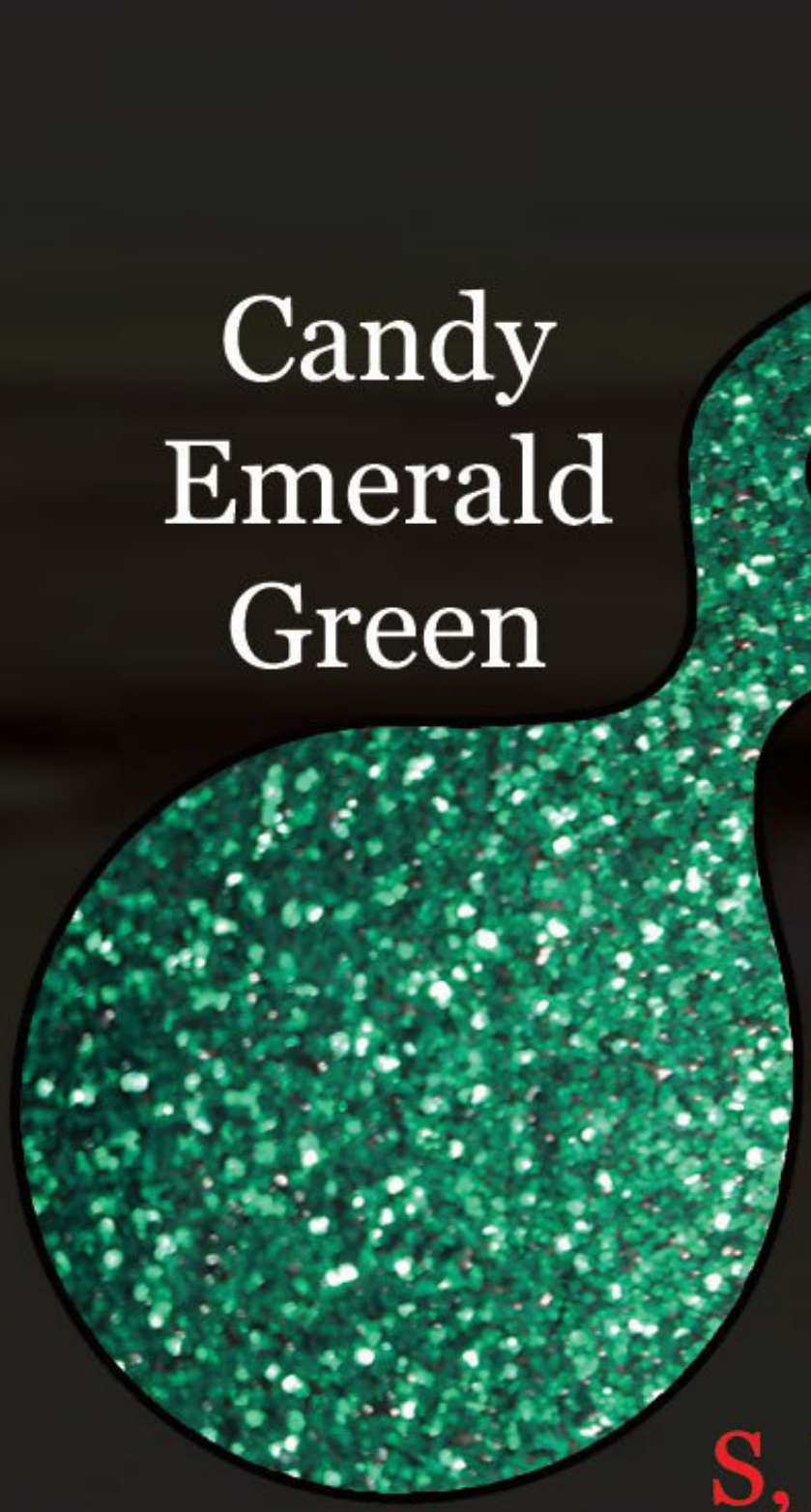
Candy
Poison
Green



S, M, L

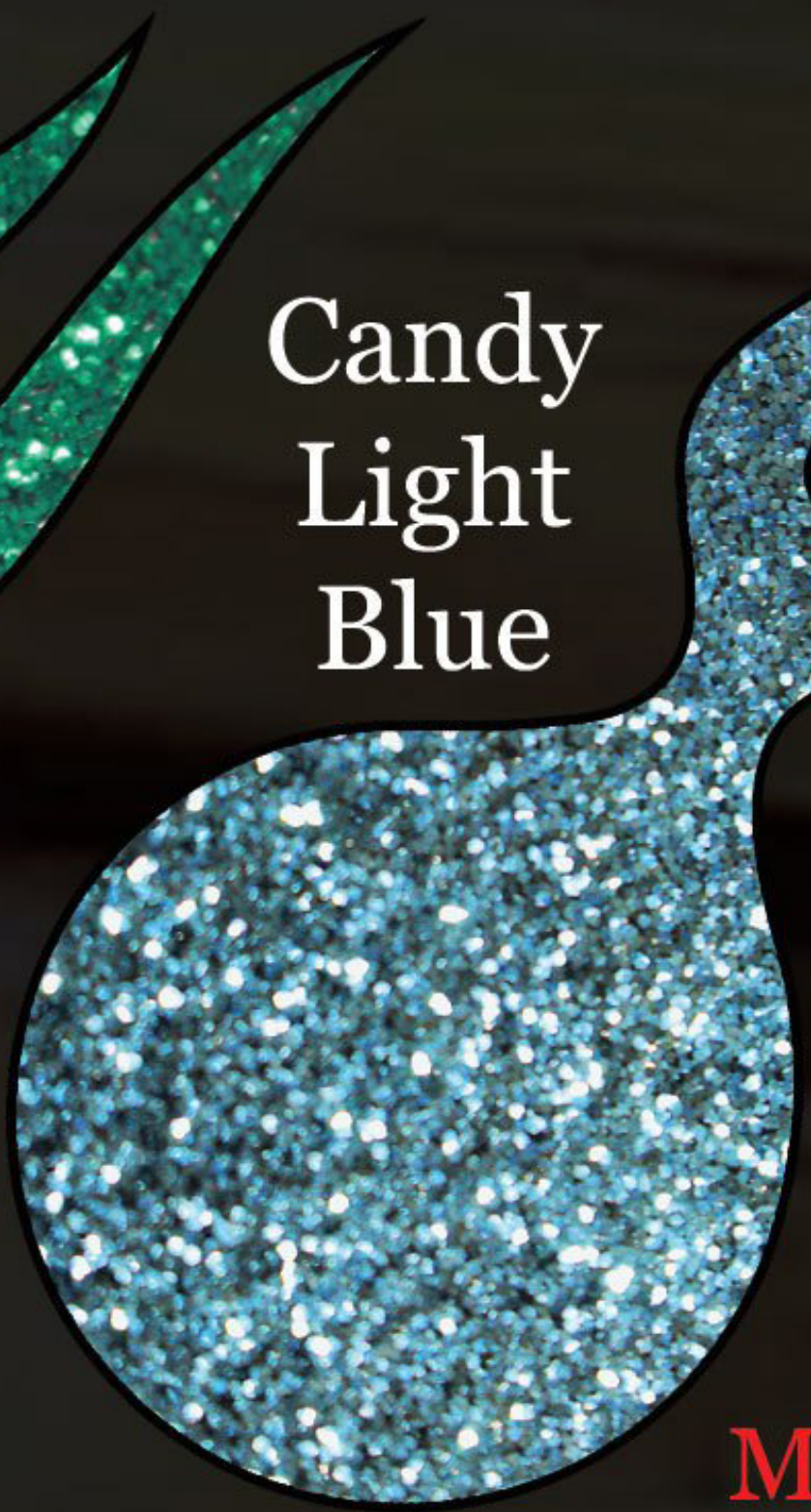
Size availability is shown in red next to each colour

Candy Emerald Green



S, M, L

Candy Light Blue



M, L

Candy Azura Blue



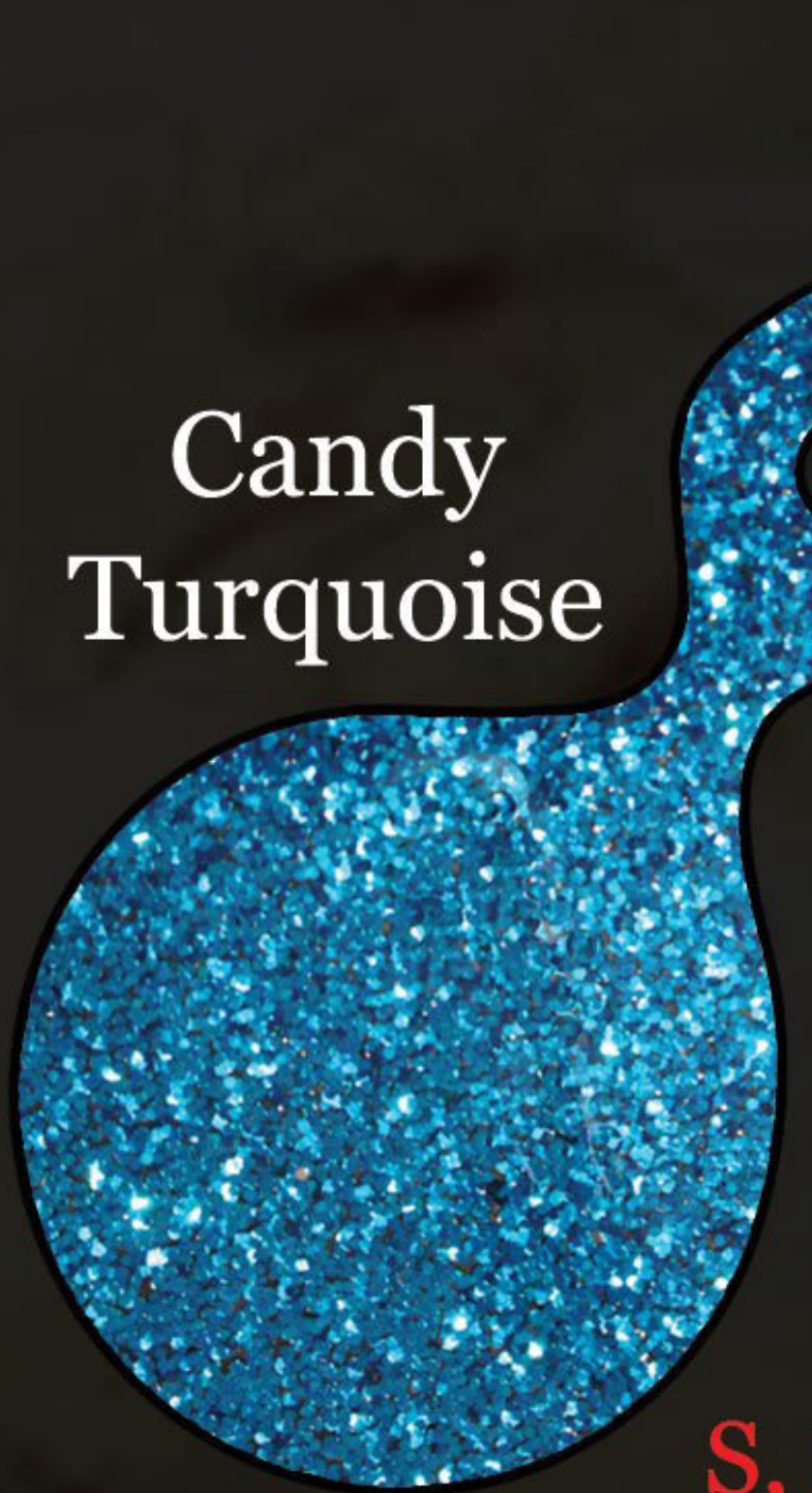
S, M, L

Candy Cobalt Blue



S, M, L

Candy Turquoise



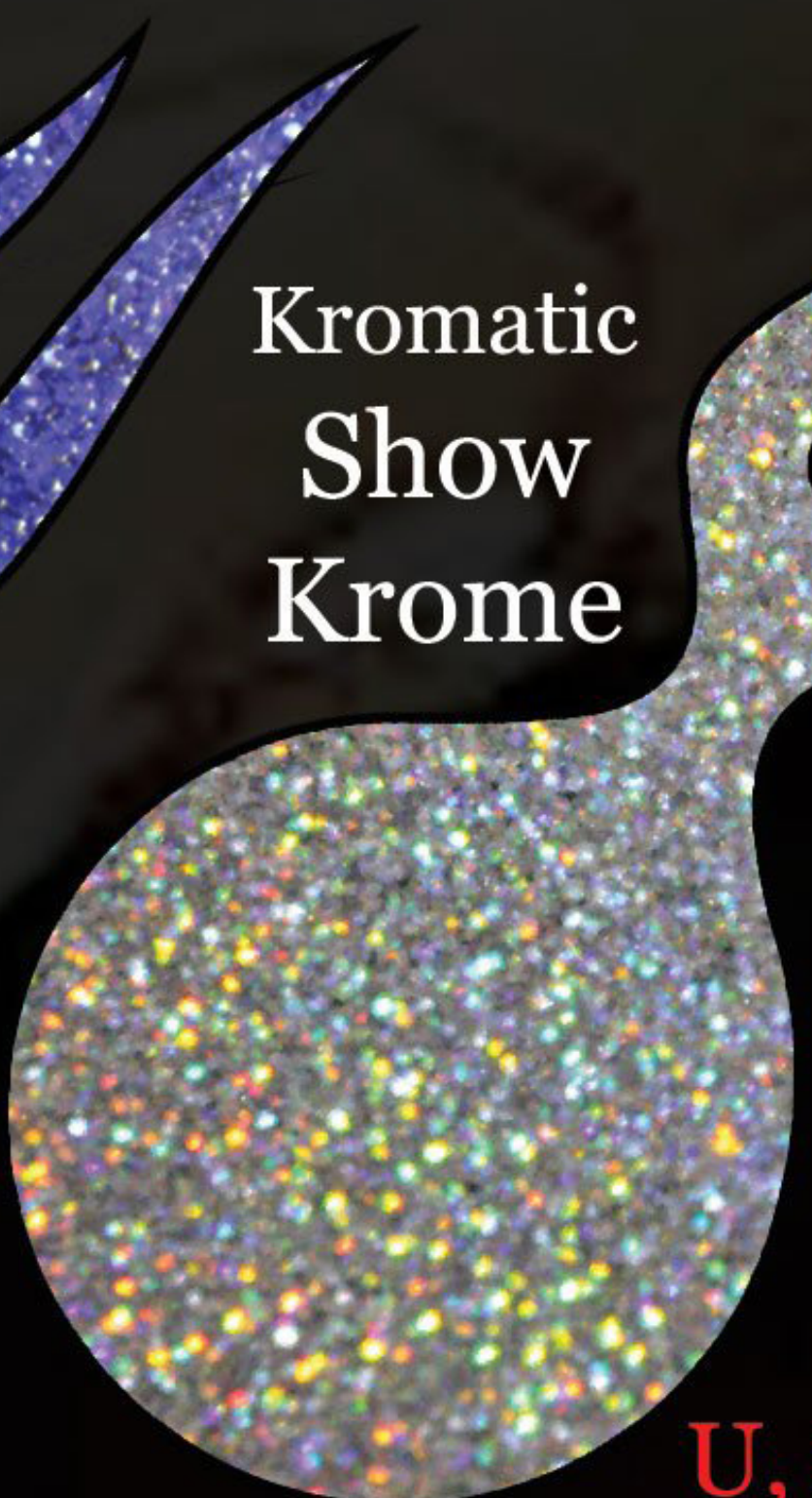
S, M, L

Candy Royal Navy



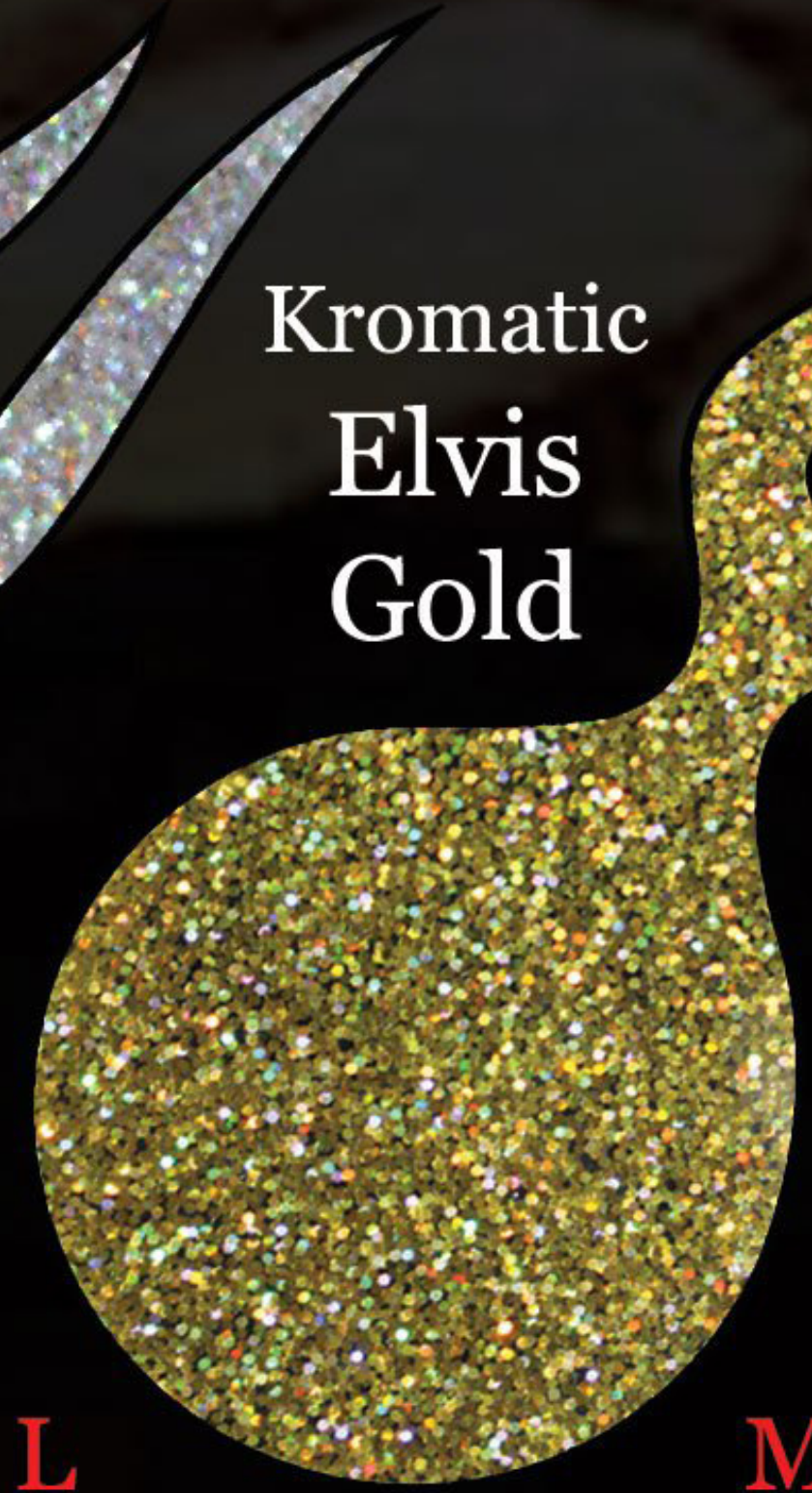
M, L

Kromatic Show Krome



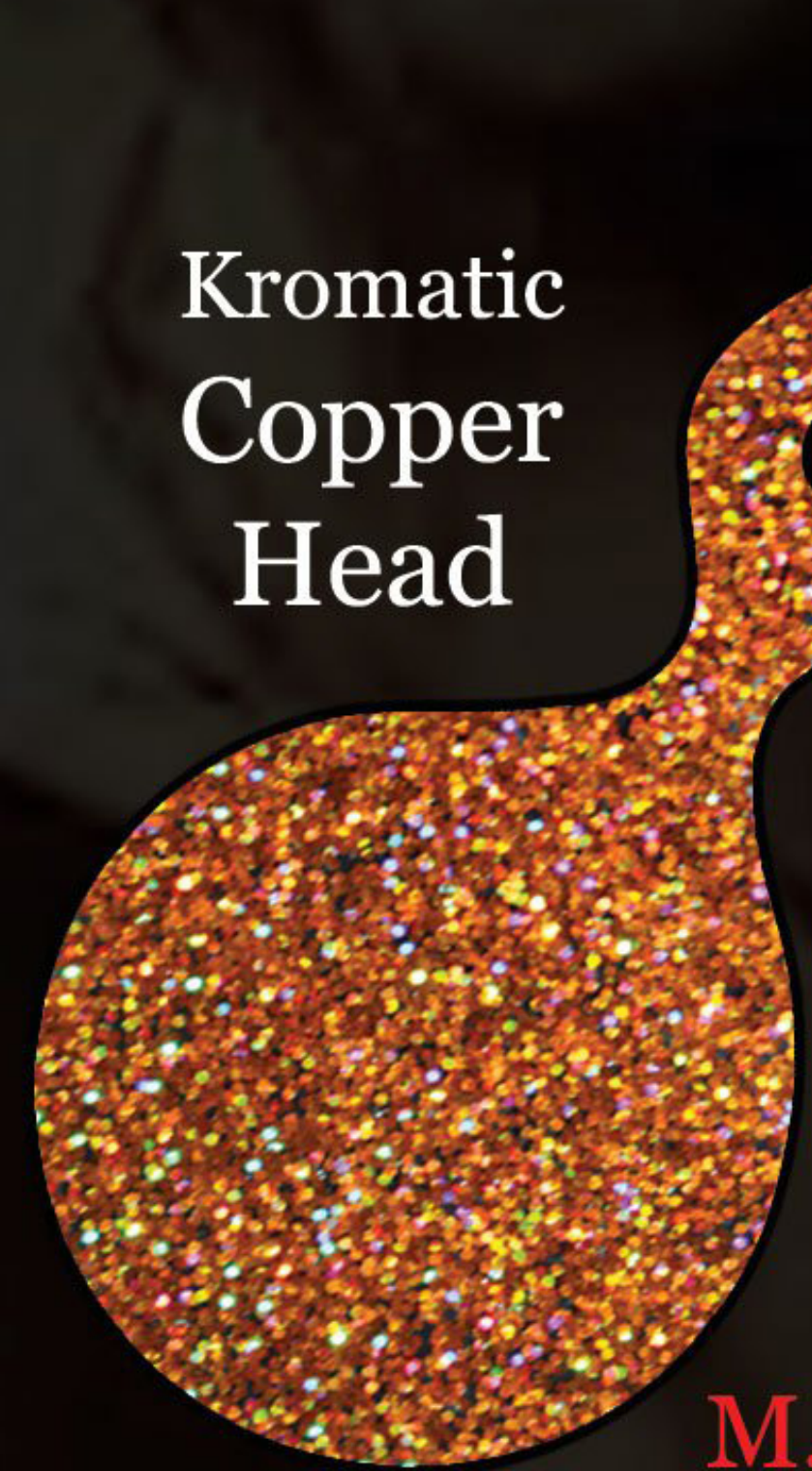
U, S, M, L

Kromatic Elvis Gold



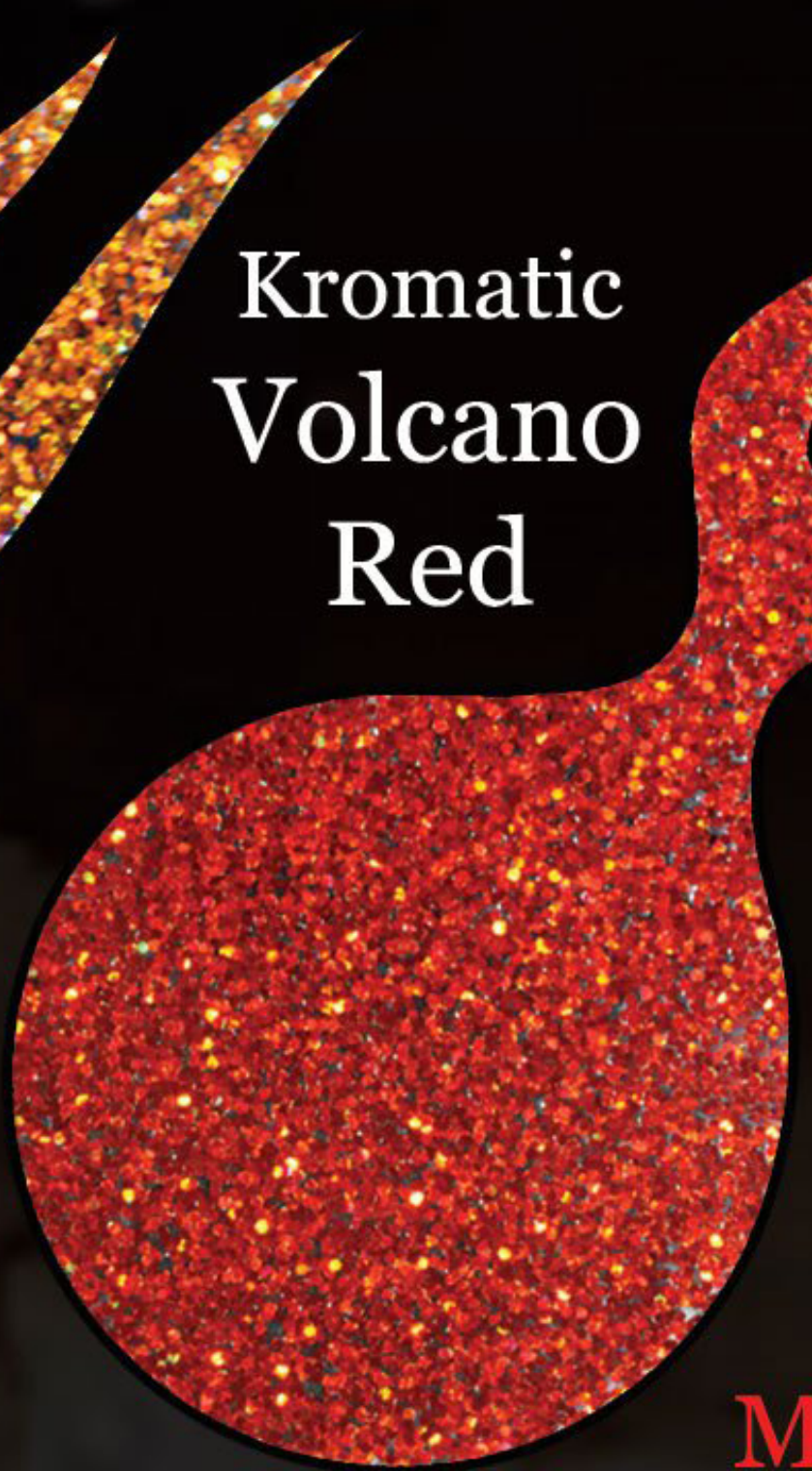
M, L

Kromatic Copper Head



M, L

Kromatic Volcano Red



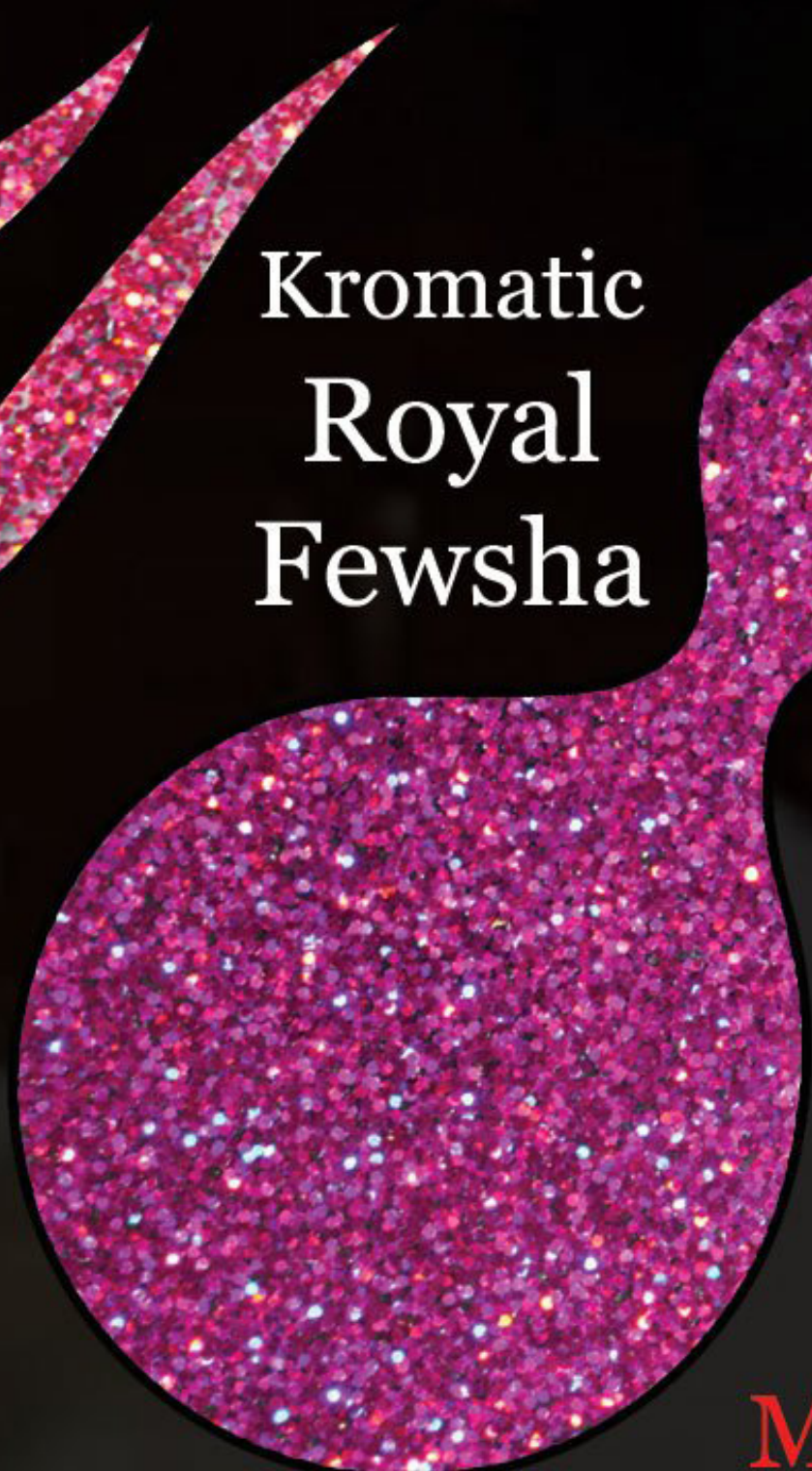
M, L

Kromatic Hot Pink



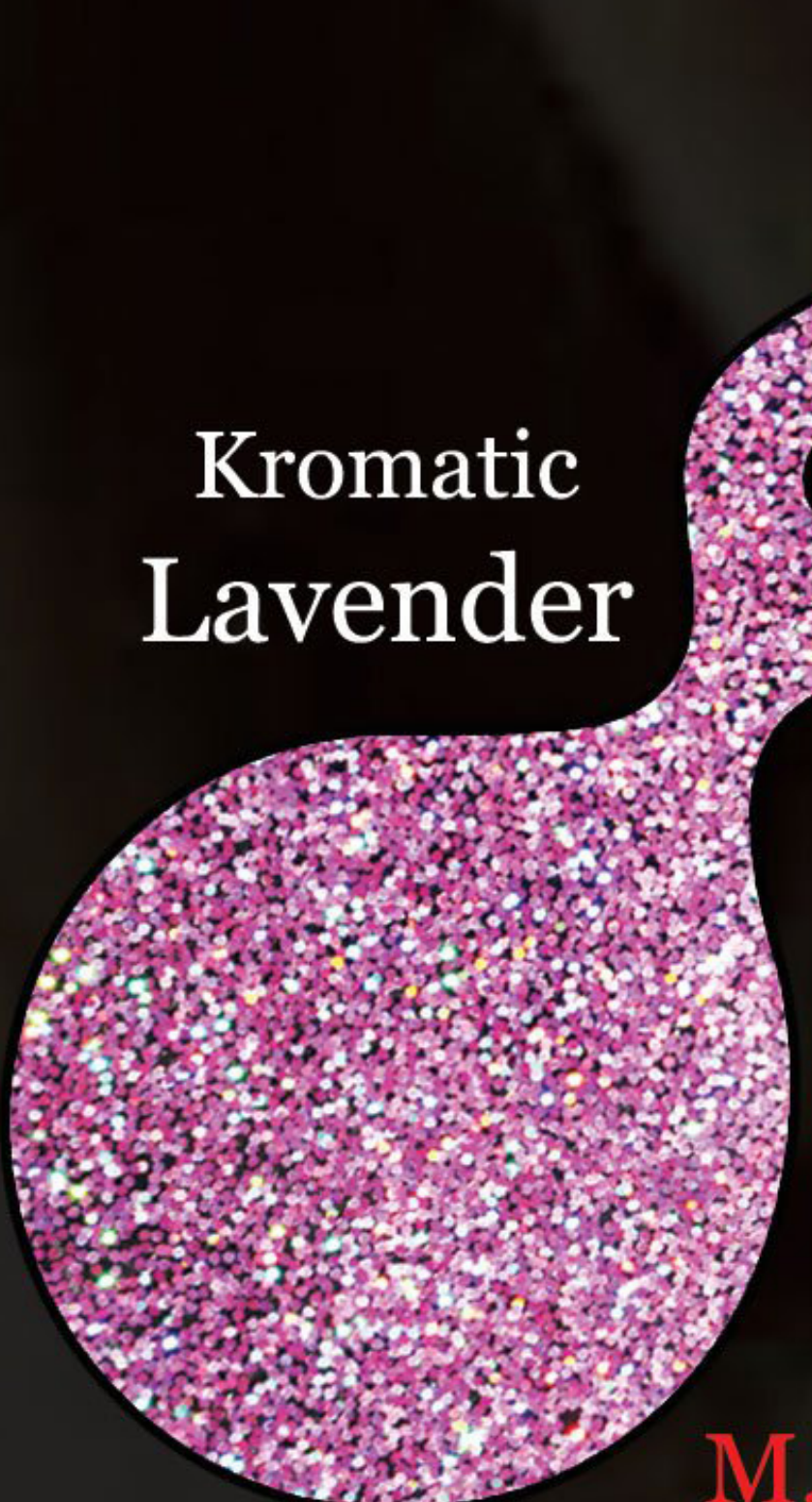
M, L

Kromatic Royal Fewsha



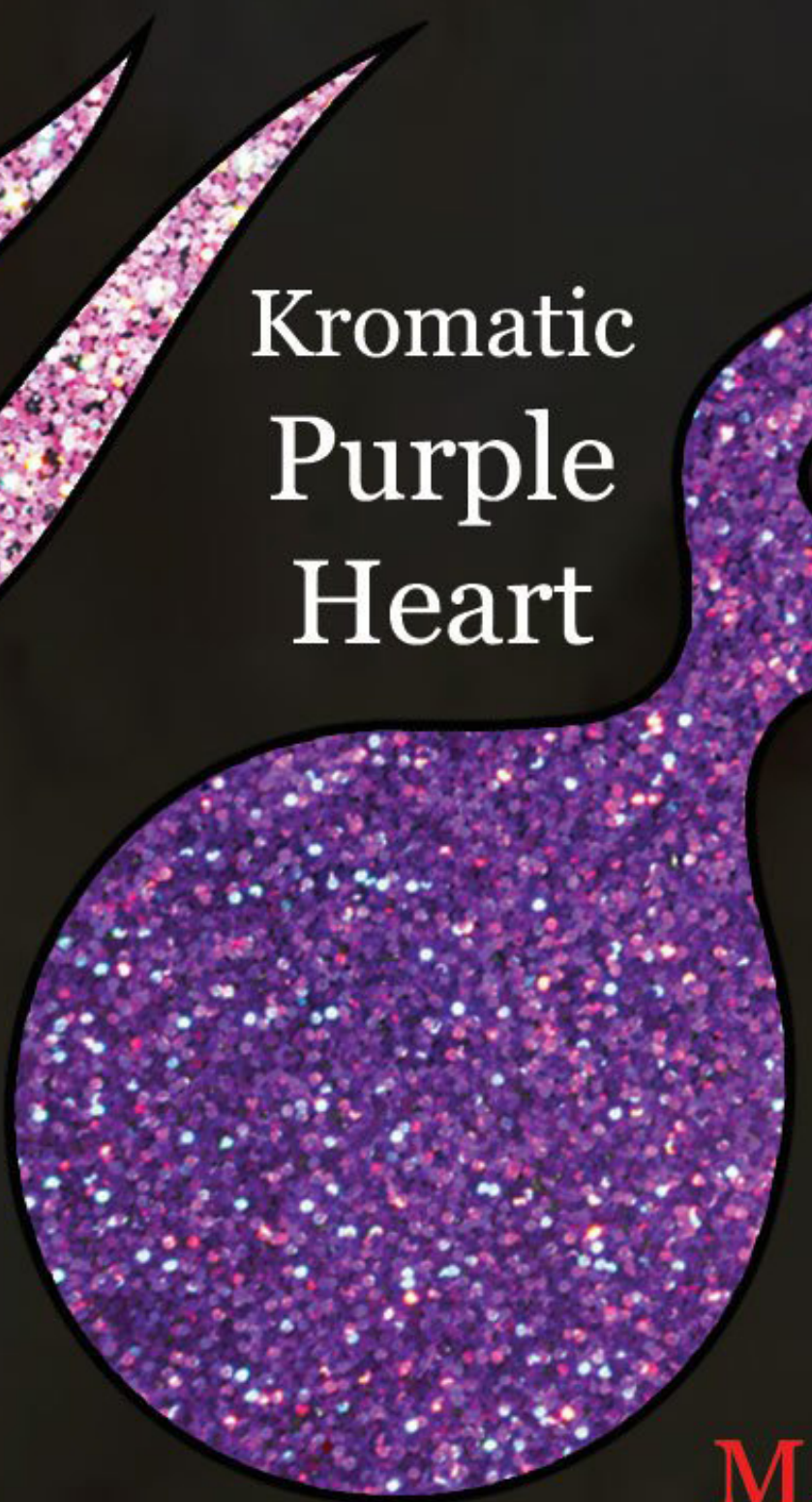
M, L

Kromatic Lavender



M, L

Kromatic Purple Heart



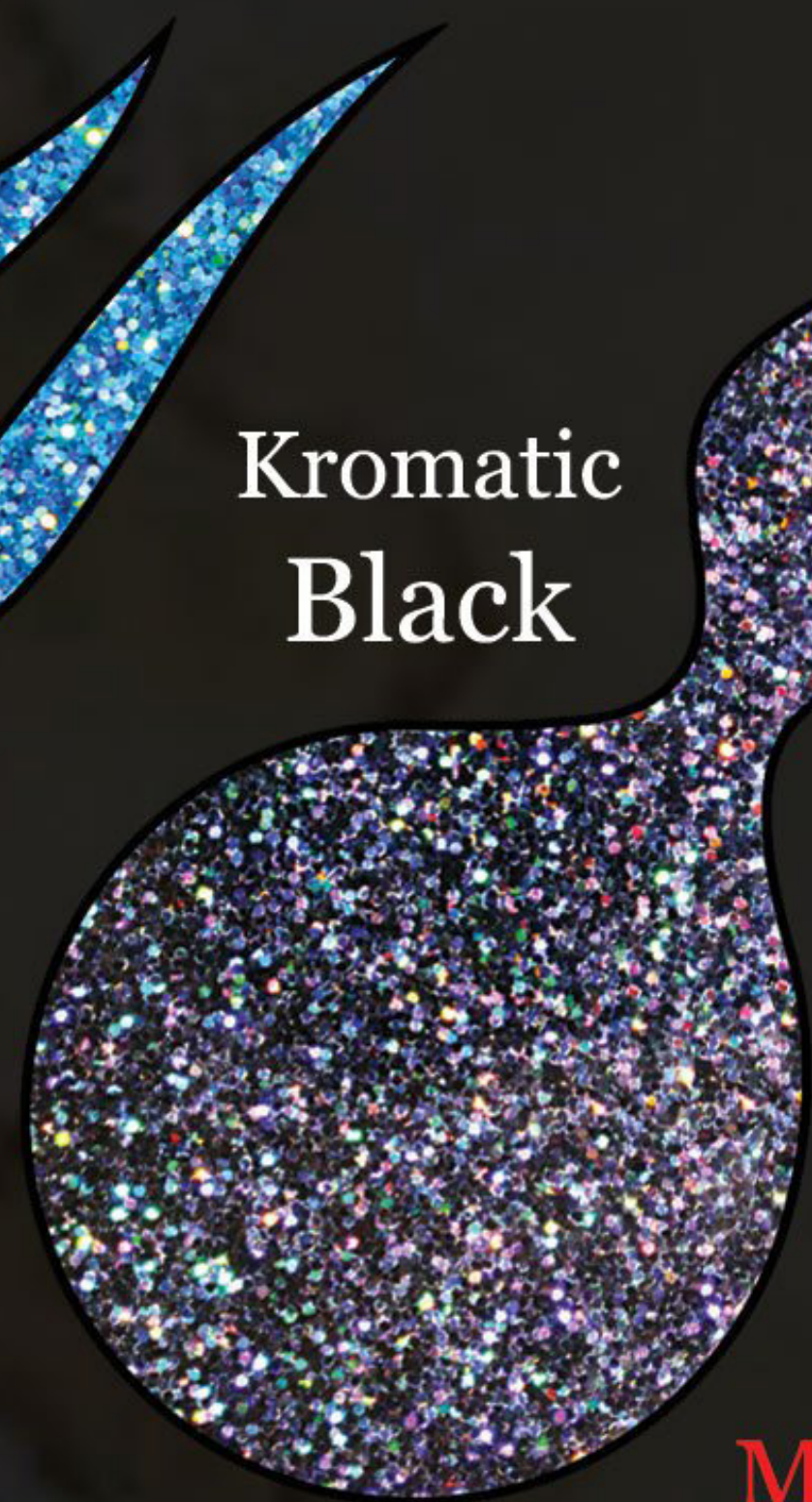
M, L

Kromatic Blue



M, L

Kromatic Black

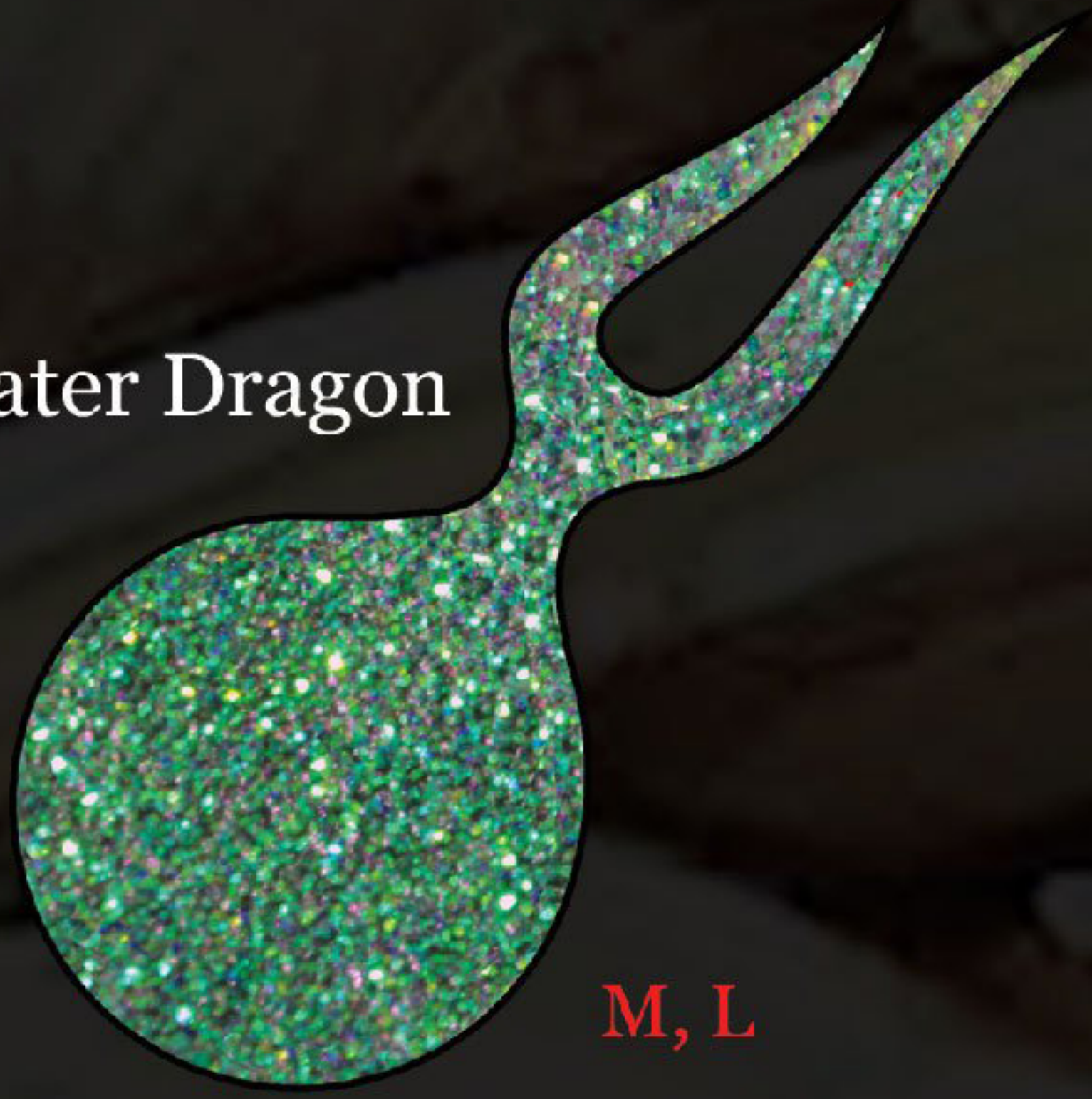


M, L



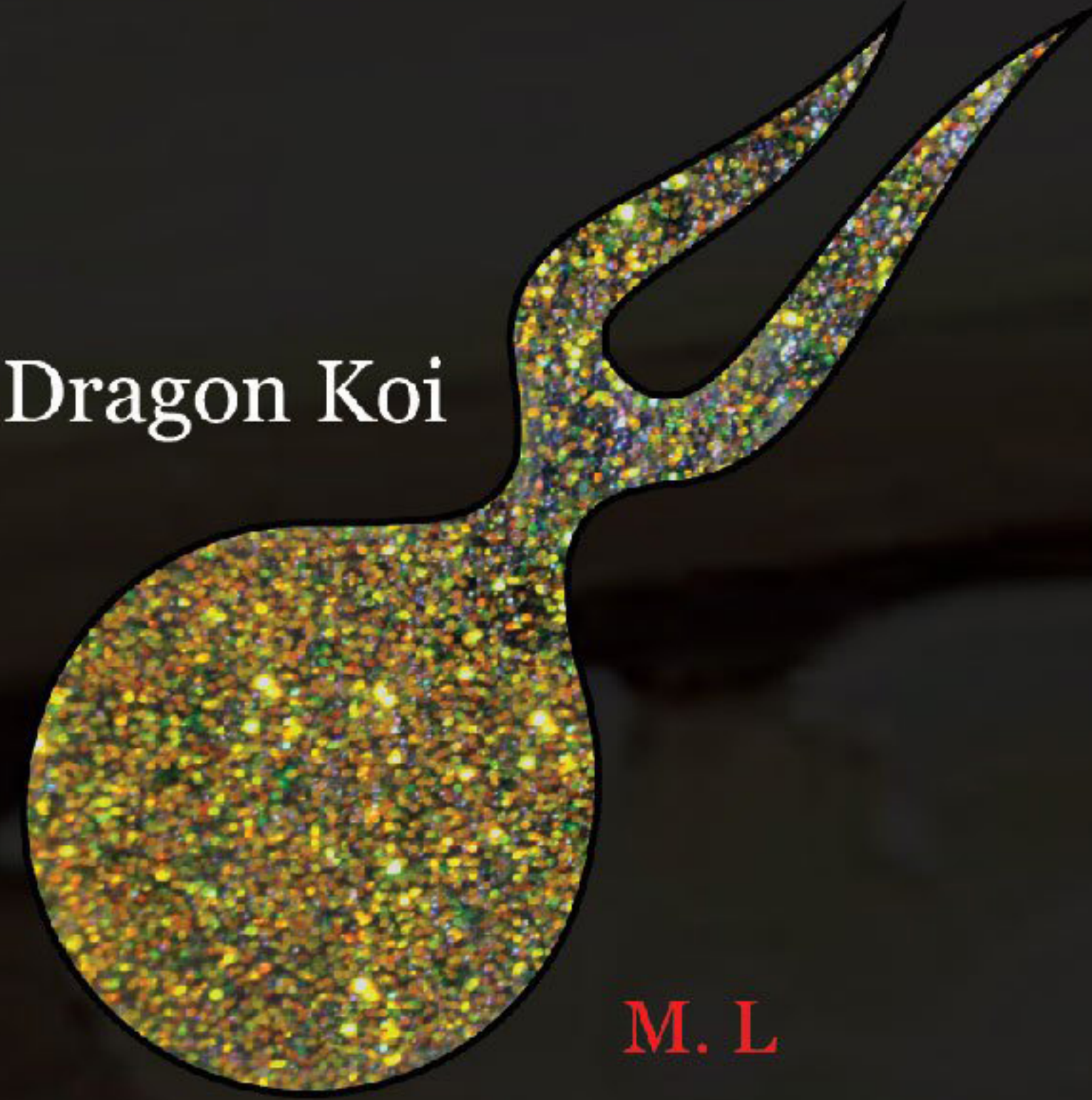
Size availability is shown in red next to each colour

Water Dragon



M, L

Dragon Koi



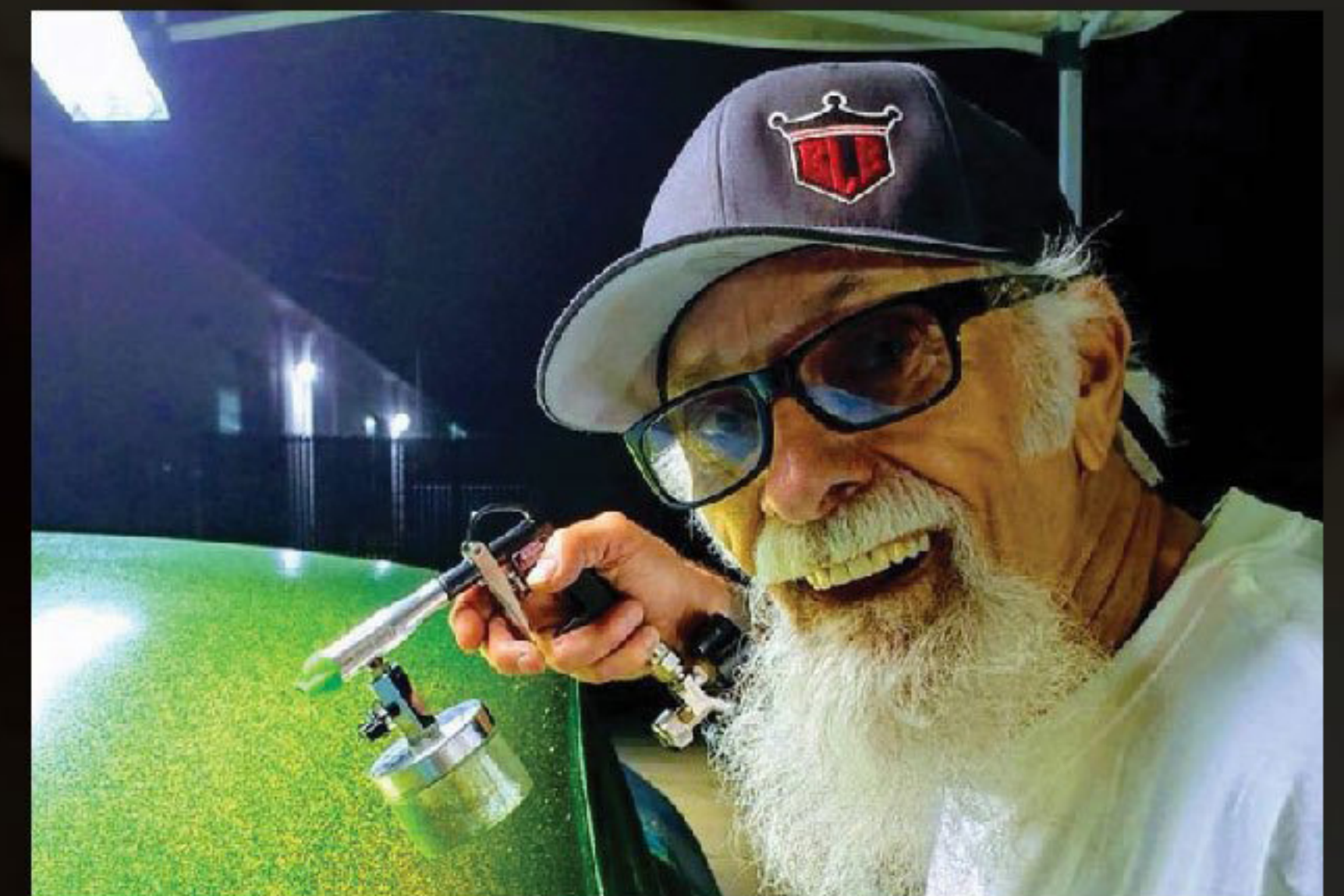
M, L



Flake King range of dry metal flake guns and adaptors...

Back Left). Flake King 500 mini gun, Back Right). Flake King 1000 Gun, Flake King 500 For Airbrush. Shown with optional accessories.

Our dry metal flake guns have been endorsed by some of the biggest and longest serving names in the custom paint and metal flake industry worldwide.



Bob Spina - Paint Legend and Friend

Our Flakes are available in the jars that fit straight onto our Flake King 1000 and Flake King 500 Airbrush & Mini Gun, If you're flaking larger items we also supply the flakes in bulk tubs - go big and save money!!



For more information visit our website www.flakeking.com or find us on facebook as [flakekingmanufacturer](#). Don't forget to like our page and join our facebook group [Flake King Users Group](#), We want to see what you're doing with our products

Our products are proudly manufactured in the United Kingdom

Flake King, Lartington, Barnard Castle, Co, Durham, DL12 9DW, United Kingdom, Tel: +44 (0)1833 650 353