

Metric Tables

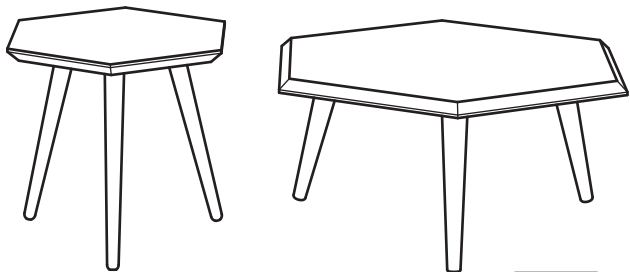
The Metric Coffee & End Tables are made of solid wood. All wood components have distinct grain patterns, making each piece of furniture unique. We recommend cleaning the wood with a damp, soft cloth. **Do not use abrasive cleaning products.**

Preventative Measures:

Make sure the Metric Table is not exposed to direct sunlight for a long period of time. Do not put any extremely hot or cold food items/beverages in direct contact with the wood surface as this may cause marking or damage to the finish. Spills must be cleaned immediately or this may cause discoloration to the wood and may cause permanent damage.

Shrinking, Cracking, Warping:

Keeping the humidity at an even level throughout the year will prolong the life of your table. Wood is very susceptible to changes in the humidity of its environment, which causes it to expand and shrink. Climate control will minimize this. A level of 40%-55% humidity with an ideal temperature of 70-72 degrees Fahrenheit should be maintained.



Gus*

Modern
furniture
made
simple.

Metric Coffee Table

Metric End Table

ASSEMBLY INSTRUCTIONS

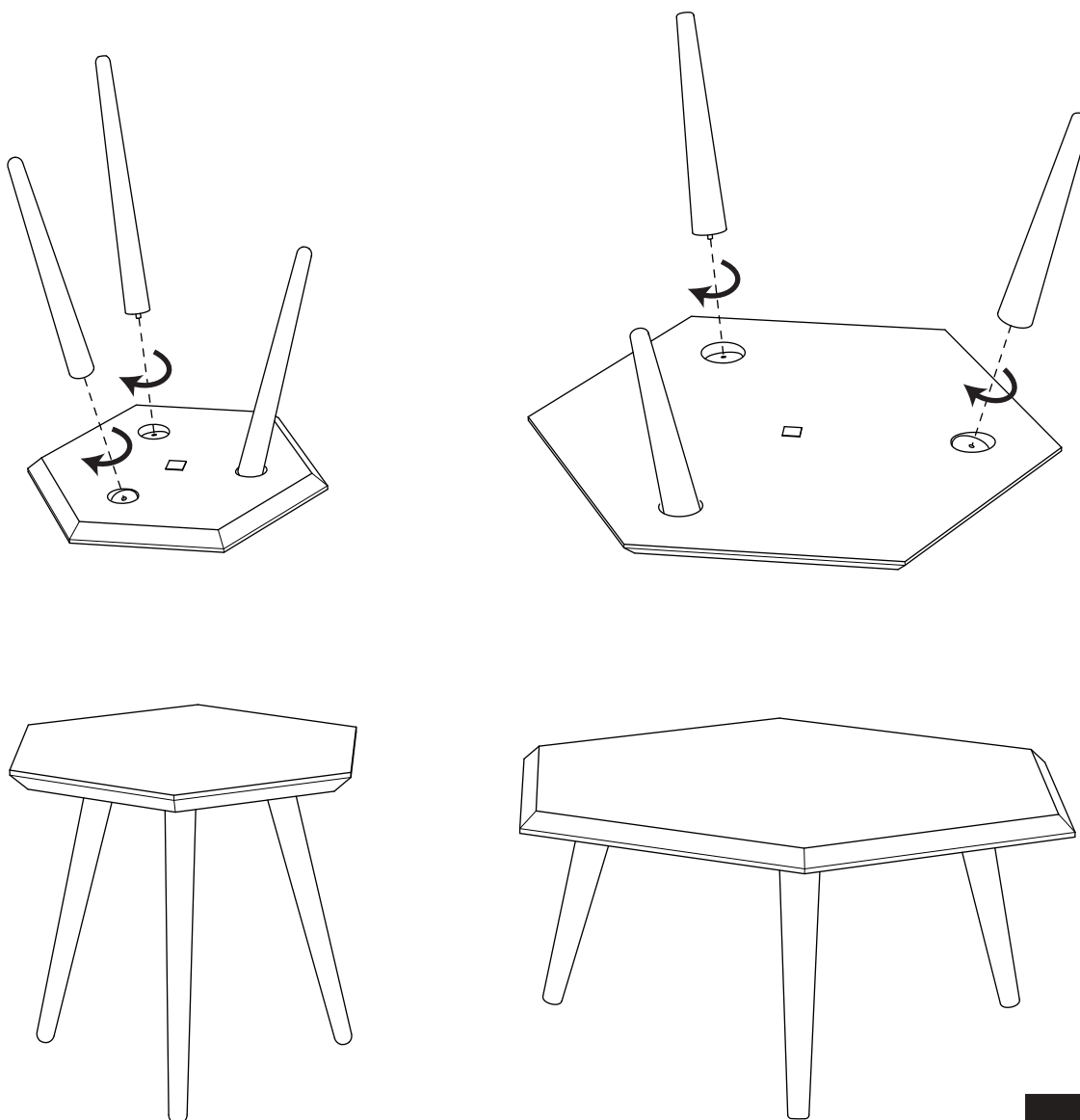
KEEP ALL PACKAGING MATERIALS UNTIL YOU HAVE VERIFIED ALL COMPONENTS AND PARTS

- 1 Place the table tops upside-down on a flat, clean surface such as a rug.
- 2 Secure each threaded leg by screwing into the holes on the bottom of each table.
- 3 Turn upright and enjoy!

The Metric Tables are made of solid wood. All wood components have distinct grain patterns, making each piece of furniture unique. To help maintain their appearance, we recommend cleaning the wood with a damp, soft cloth.

Do not use abrasive cleaning products.

DEPENDING ON USE, IT MAY BE NECESSARY TO TIGHTEN THE LEGS PERIODICALLY TO MAXIMIZE THE STABILITY OF THE TABLES.



Modern
furniture
made
simple.