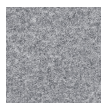


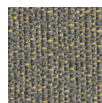
Highline Chair



Merino
Cream



Merino
Dapple



Helio
Avenue

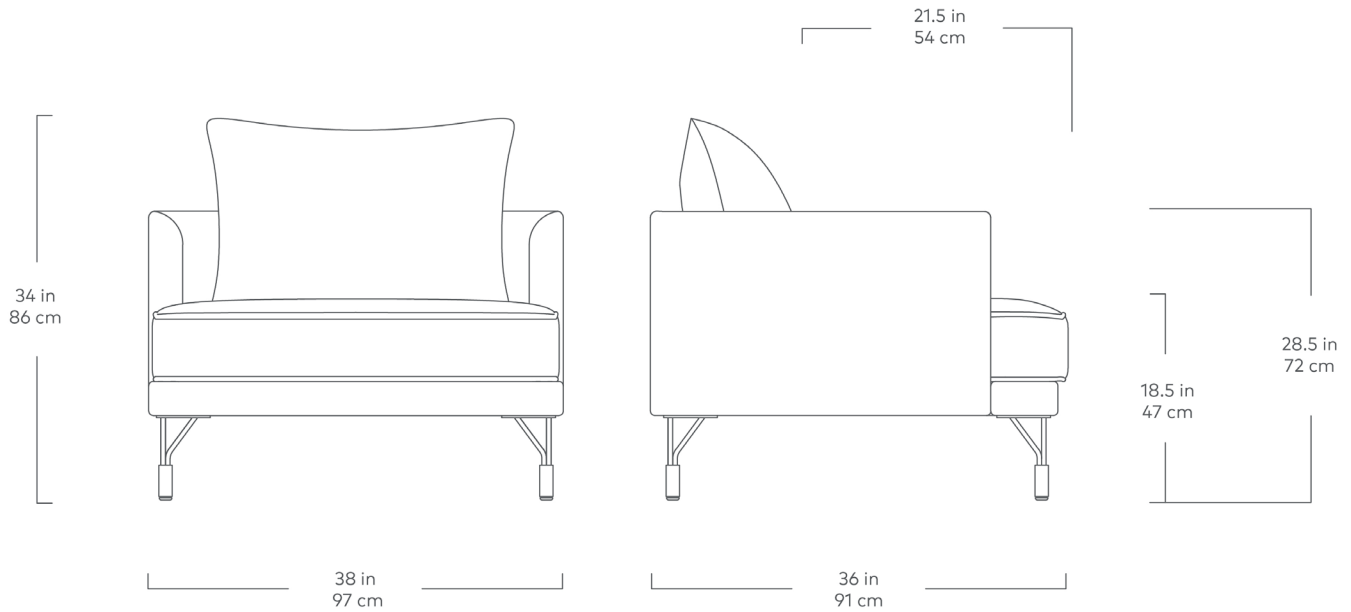


Helio
Tux

The Highline Chair pairs elegant proportions with industrial details and eco-friendly materials to create a design that will elevate any room. Gracefully curved arms, French seam detailing, and loose, luxurious cushions all contrast architectural steel legs to conjure an aesthetic which is both timeless and contemporary. The back cushions use our signature, eco-friendly synthetic-down - a material that is created through a process that benefits the environment by diverting plastic bottles away from landfills, waterways and oceans. The sofa frame is constructed with durable, kiln-dried FSC®-Certified hardwood in support of responsible forest management.

Design Trade Professionals: We aim to keep our designs in stock and ready to ship quickly for projects on a tight timeline. Designs may be customized with COM and alternate finishes (minimum quantities may apply). Visit guscontract.com for more information about our Trade & Contract programs.

Highline Chair



- Reversible back cushion contains an eco-friendly, synthetic-down fill made from 205 recycled plastic water bottles.
- Reversible seat cushion is crafted with high resiliency medium density foam covered in a Dacron wrap.
- Piped seam detailing on arms and back.
- A slim platform gives the illusion of the design sitting higher off the ground.
- Durable inner frame constructed with steel and kiln-dried FSC® Certified hardwood, in support of responsible forest management (FSC® 092551).
- Non-marking leveler feet can be adjusted for stability on uneven floor surfaces.
- No-Sag, sinuous spring suspension system.
- All joints have been stress tested.
- Manufactured to comply with California Prop Phase 2 standards.
- Manufactured to meet California TB117-2013 fire safety standards without the use of flame retardant additives in the upholstery foam.
- All fabric is California TB117-2013 certified and double rub tested.

