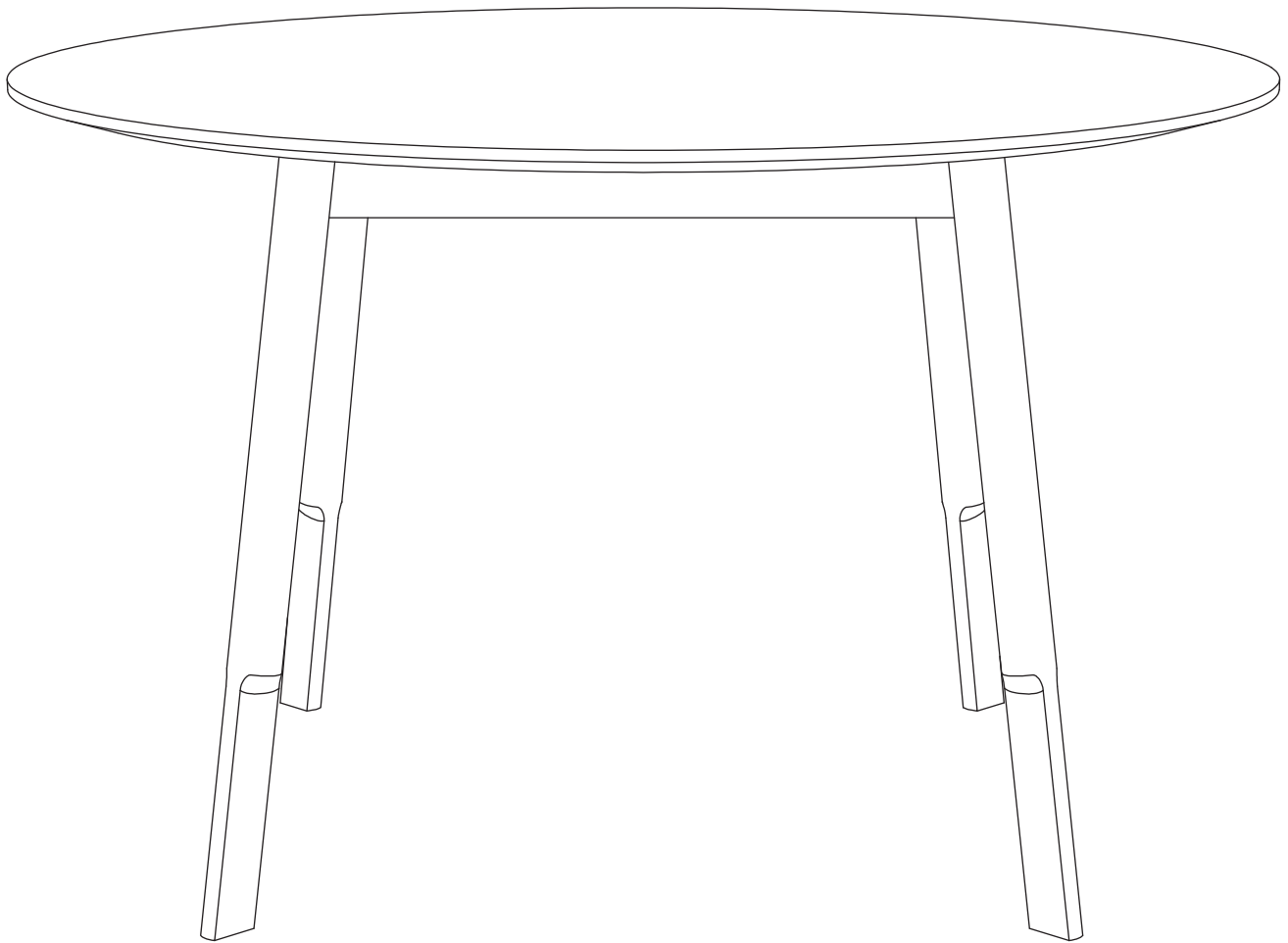


# Bracket Dining Table

To help maintain the appearance of your table, we recommend cleaning the wood top and base with a damp soft cloth.

**Do not use abrasive cleaning products.**



**Gus\***

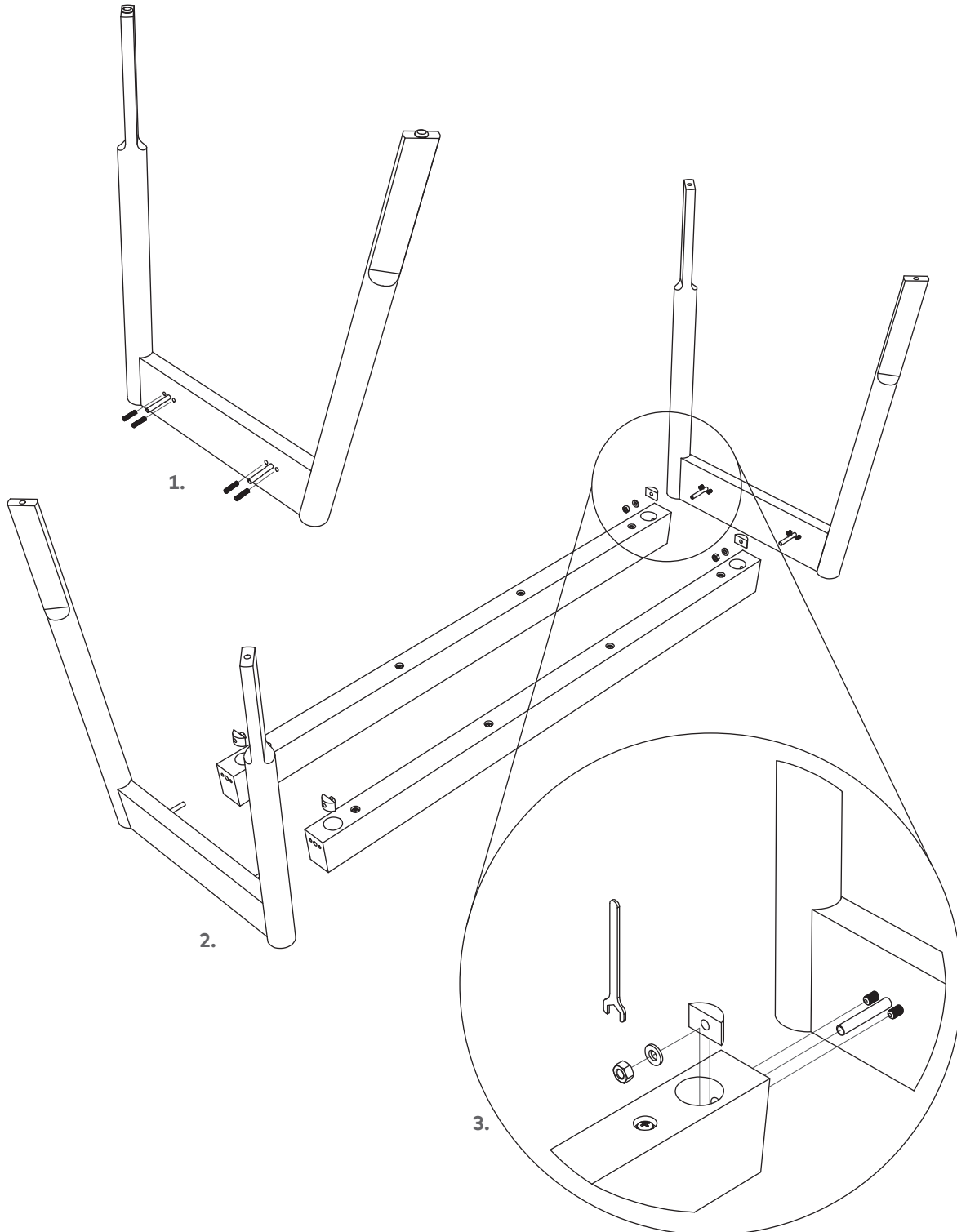
Modern  
furniture  
made  
simple.

# Bracket Dining Table Oval

## ASSEMBLY INSTRUCTIONS

KEEP ALL PACKAGING MATERIALS UNTIL YOU HAVE VERIFIED ALL COMPONENTS AND PARTS.

1. Install the threaded stud and dowels into the splayed leg components.
2. Slide horizontal bridging members over the protruding threaded studs and dowels.
3. Slide crescent spacer and washer over the end of the threaded stud that projects into round cavity in underside of horizontal bridging members. Finger tighten hex nut onto ends of threaded studs. Repeat on four ends of horizontal bridging members.



# Bracket Dining Table Oval

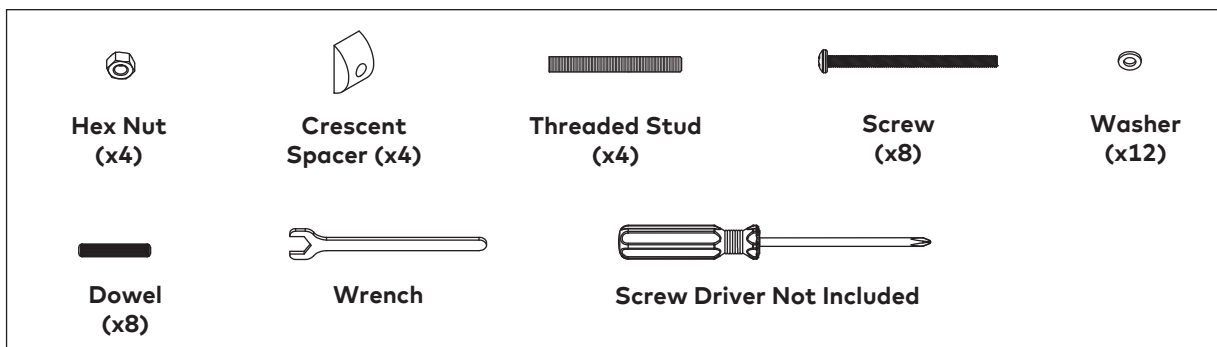
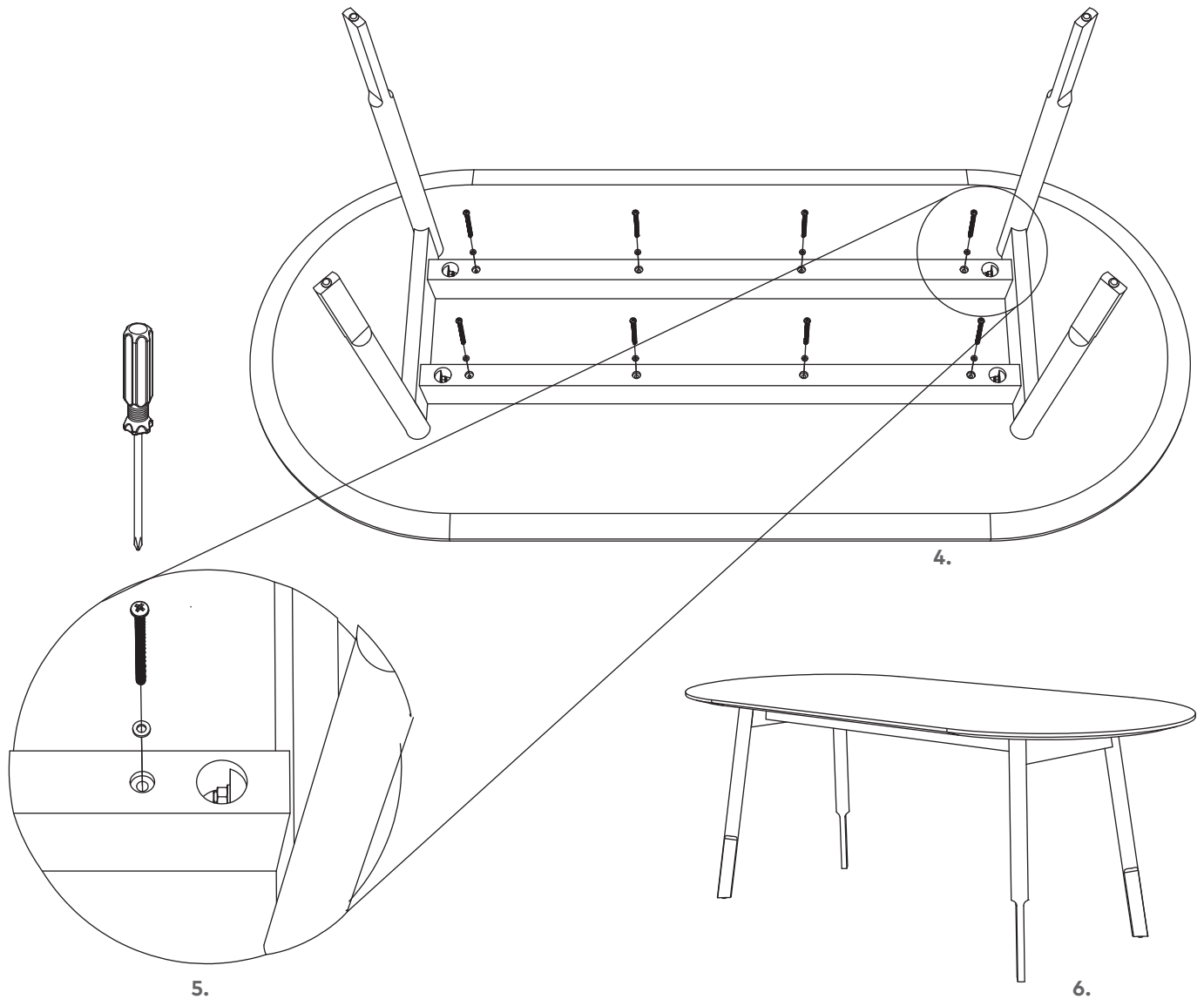
## ASSEMBLY INSTRUCTIONS

4. Place completed base assembly on underside of table top. Align bridging member holes with holes in table top.

5. Fasten base to table top with washers and screws provided.

6. Place completed table upright on floor.

DEPENDING ON USE, IT MAY BE NECESSARY TO TIGHTEN THE SCREWS AND FASTENING ASSEMBLIES PERIODICALLY TO MAXIMIZE THE STABILITY OF THE TABLE.



Modern  
furniture  
made  
simple.