

AiM pressure sensor 0-5 bar absolute

0-5bar absolute pressure sensor is suitable for manifold air pressure reading (MAP), being able to read depressions up to -1 bar in relation with atmospheric pressure, additionally to absolute pressures up to 4 bars.

The sensor is sold with two different threads, whose **part number** is:

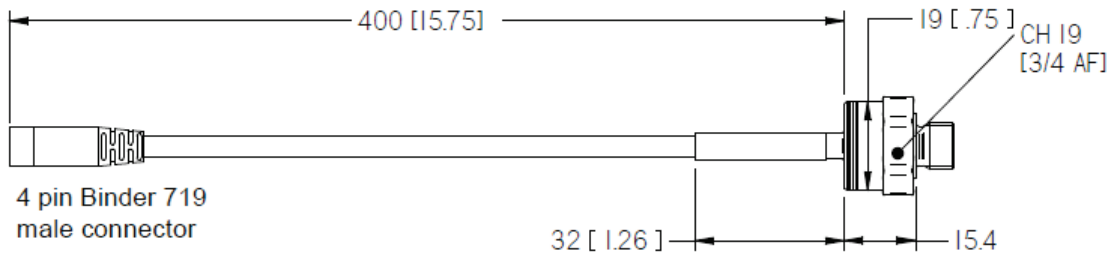
- 0-5 bar absolute M10 **X05PSA00005B10AK**
- 0-5 bar absolute 3/8 24 **X05PSA00005B38AK**



Technical characteristics

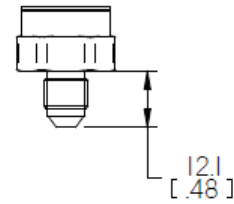
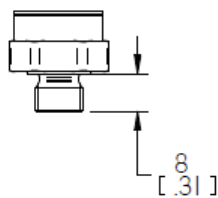
Supply	8-16 V
Accuracy	< +/- 0.5% FS (CLNH – combined non-linearity and hysteresis)
Characterisation	500 mV/ -1 bar 4500 mV/ 4 bar
Consumption	< 10 mA
Temperature working range	from -20°C to 135°C
Sealing	IP66
Housing	316 stainless steel
Weight	30 g
Cable length	400 mm
Thread	M10 – 3/8 24

Drawings and pinout

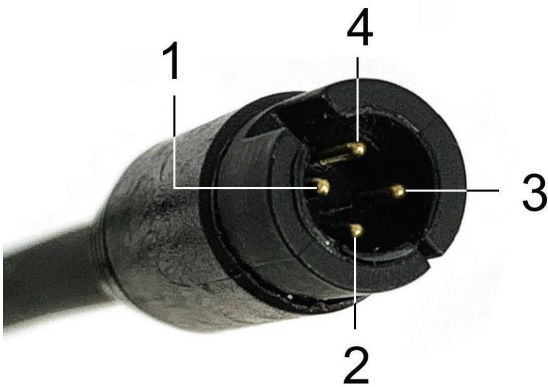


M10x1

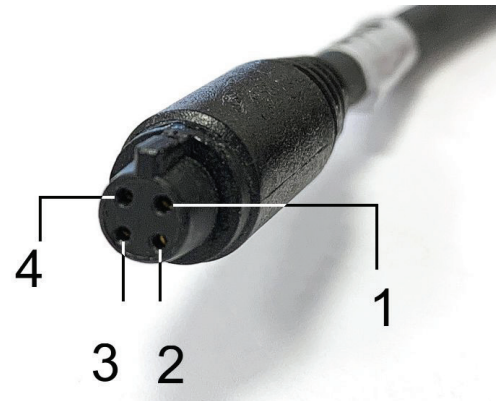
3/8 24 dash3



Binder connector – Sensor side



Binder connector – Harness side



Pin

- 1
- 2
- 3
- 4

Function

- Analog signal
- GND
- +Vb
- Not connected

Cable color

- White
- Black
- Red

Extension cables

For this sensor connection, standard length extension cables are available, whose part number changes according to their length and to the product the sensor is to be connected to.

Extension cable for connection to:

- MXG/MXG 1.2/MXG 1.2 Strada
- MXS/MXS 1.2/MXS Strada/MXS 1.2 Strada
- MXP/MXP Strada
- MXL2
- MXm
- EVO5
- MXL Strada/Pista/Pro05

Part numbers:

- V02PCB05B** - cable length: 500mm
- V02PCB10B** - cable length: 1000mm
- V02PCB15B** - cable length: 1500mm
- V02PCB20B** - cable length: 2000mm
- V02PCB25B** - cable length: 2500mm
- V02PCB30B** - cable length: 3000mm



Extension cable for connection to:

- Channel Expansion
- EVO4
- EVO4S

Part numbers:

- V02PCB05BTXG** - cable length: 500mm
- V02PCB10BTXG** - cable length: 1000mm
- V02PCB15BTXG** - cable length: 1500mm
- V02PCB20BTXG** - cable length: 2000mm
- V02PCB25BTXG** - cable length: 2500mm
- V02PCB30BTXG** - cable length: 3000mm

