



**BEN
SEN**

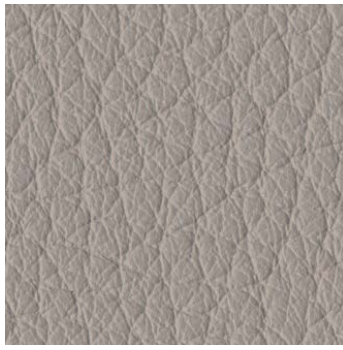
Fabrics & Leathers
2020

BENSEN Fabrics & Leathers

| Category | Cut Lengths (Stocked in Europe) |
|---|---|
| <p style="text-align: center;">A</p> | <p>P 3 House Leather P 4 Prescott (Leather) P 5 Toscano (Leather A, Tokyo only) (Leather B, Stax only)</p> |
| <p style="text-align: center;">B</p> | <p>P 7 Acquario (Leather)(Except U Turn) P 8 - 11 elmosoft VIII (Leather) P 12 - 13 elmonordic IV (Leather) P 14 Lord (Leather) P 15 Sahara (Leather) P 16 Barbat P 17 Chanel P 18 Optim</p> |
| <p style="text-align: center;">C</p> | <p>P 20 Acker P 21 - 22 Donnafugata Soft P 23 - 25 Gaja Classic (Gabriel) P 26 Sobral P 27 Tundra 01 P 28 - 29 Wilde P 30 - 31 Wilde 01</p> |
| <p style="text-align: center;">D</p> | <p>P 33 - 35 Europost 2 (Gabriel) P 36 - 37 Katmandu P 38 - 39 Luna 2 (Gabriel) P 40 - 41 Maple (Kvadrat) P 42 - 43 Nobilis</p> |
| <p style="text-align: center;">E</p> | <p>P 45 - 47 Divina 3 (Kvadrat) P 48 - 49 Divina MD (Kvadrat) P 50 - 51 Divina Melange 3 (Kvadrat) P 52 - 53 Harald 3 (Kvadrat) P 54 - 55 Savana (Kvadrat)</p> |
| <p style="text-align: center;">F</p> | <p>P 57 - 60 Gabriel: Comfort+ Kvadrat Special (Price upon request)</p> |

Category

A



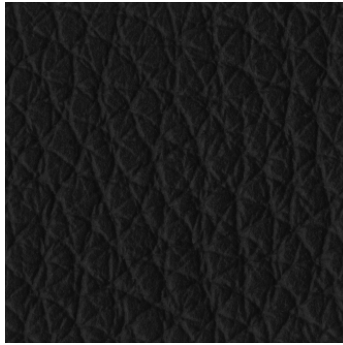
7763



7738



7060



7150

House Leather

Category



TECHNICAL PROPERTIES

| PROPERTIES | VALUE |
|--------------|--|
| Thickness | 1.4 - 1.6 mm |
| Leather type | Pigmented - corrected grain through dyed aniline |
| Raw Material | Chrome tanned raw hides with European origin |



Turtledove 209



Gray Shadow 211



Peatmoss 217



Black Ink 207

Prescott

(Leather)

TECHNICAL PROPERTIES

| PROPERTIES | VALUE |
|--------------|---|
| Thickness | 1.2 - 1.4 mm |
| Leather type | Through dyed - finishing with resins and pigments |
| Raw Material | Natural corrected grain bovine leather |

Category





Natural



Honey



Brown



Black

Toscano

(Leather, Tokyo and Stax only)

Category



Category A for Tokyo

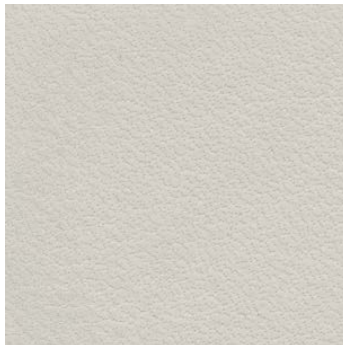
Category



Category B for Stax

Category

B



Polvere



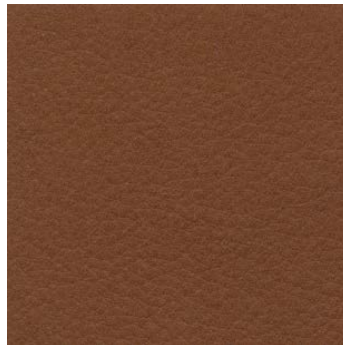
Fango



Antracite



Collant



Cuio



Marrone



T. moro

Acquario

(Leather)

TECHNICAL PROPERTIES

| PROPERTIES | VALUE |
|---------------|---|
| Thickness | 1.0 - 1.2 mm |
| Leather Types | Aniline - full grain - through dyeing aniline |
| Raw Material | European raw hides |

Category





elmosoft VIII

(Leather)

TECHNICAL PROPERTIES

Category



| PROPERTIES | VALUE |
|---------------|--|
| Thickness | 1.1 - 1.3 mm |
| Leather Types | Semi-Aniline leather |
| Raw Material | Grain leather from Scandinavian cattle |



elmosoft VIII

(Leather)

TECHNICAL PROPERTIES

Category



| PROPERTIES | VALUE |
|---------------|--|
| Thickness | 1.1 - 1.3 mm |
| Leather Types | Semi-Aniline leather |
| Raw Material | Grain leather from Scandinavian cattle |



elmosoft VIII

(Leather)

TECHNICAL PROPERTIES

Category



| PROPERTIES | VALUE |
|---------------|--|
| Thickness | 1.1 - 1.3 mm |
| Leather Types | Semi-Aniline leather |
| Raw Material | Grain leather from Scandinavian cattle |



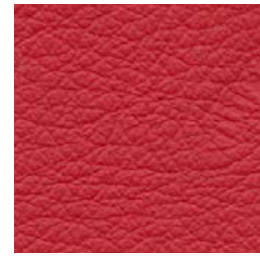
35126



55002



05007



05011



45018



45065



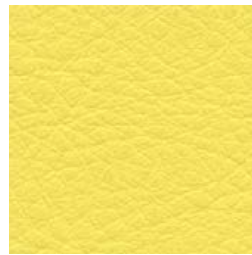
45050



44012



44026



44005

elmosoft VIII

(Leather)

TECHNICAL PROPERTIES

Category



| PROPERTIES | VALUE |
|---------------|--|
| Thickness | 1.1 - 1.3 mm |
| Leather Types | Semi-Aniline leather |
| Raw Material | Grain leather from Scandinavian cattle |



elmonordic IV

(Leather)

TECHNICAL PROPERTIES

Category



| PROPERTIES | VALUE |
|---------------|--|
| Thickness | 1.3 - 1.5 mm |
| Leather Types | Semi-Aniline leather |
| Raw Material | Grain leather from Scandinavian cattle |



87007



98027



88035



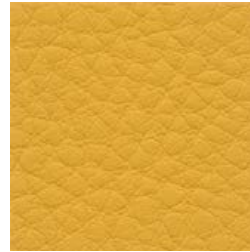
18014



01038



43044



44013



02071



02064



00385

elmonordic IV (Leather)

TECHNICAL PROPERTIES

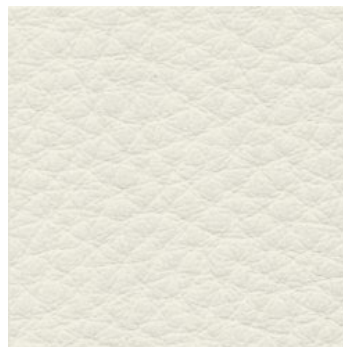
Category



| PROPERTIES | VALUE |
|---------------|--|
| Thickness | 1.3 - 1.5 mm |
| Leather Types | Semi-Aniline leather |
| Raw Material | Grain leather from Scandinavian cattle |



9000



9320



9010



9340



9230



9250



9120



9270



9280



9180



9190



9300

Lord

(Leather)

Category

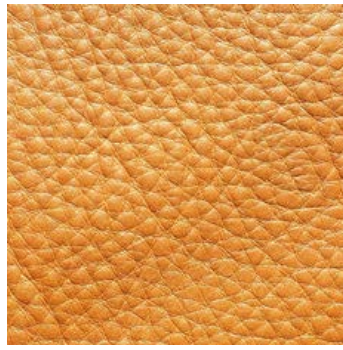


TECHNICAL PROPERTIES

| PROPERTIES | VALUE |
|---------------|---|
| Thickness | 1.3 - 1.5 mm |
| Leather Types | Aniline - full grain - through dyeing aniline |
| Raw Material | European raw hides |



Gray



Tan



Brown



Black

Sahara

(Leather)

Category

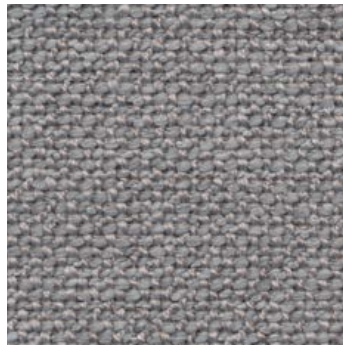


TECHNICAL PROPERTIES

| PROPERTIES | VALUE |
|---------------|----------------------|
| Thickness | 1.4~1.6 mm |
| Leather Types | Semi-Aniline leather |



18



16



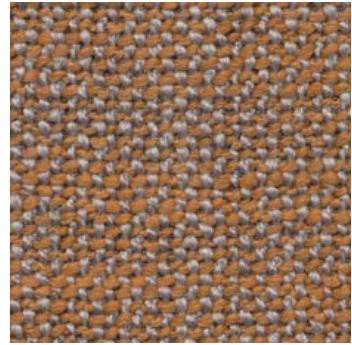
14



12



24



2








4



7

Barbat

TECHNICAL PROPERTIES

| PROPERTIES | VALUE |
|-------------------------|---|
| Composition | 41% Acrylic 38% Polyester 21% Cotton |
| Weight | 762 g/ml |
| Martindale | 40,000 |
| Fabric care instruction |      |

Category





07



10



45



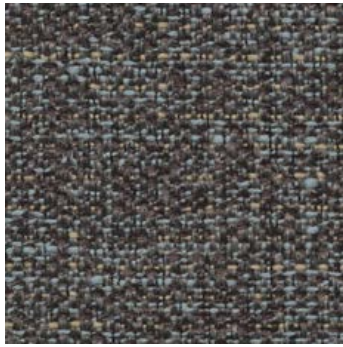
51



52



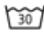



53



70

Chanel

TECHNICAL PROPERTIES

| PROPERTIES | VALUE |
|-------------------------|---|
| Composition | 48% Polyester 32% Polypropylene 20% Cotton |
| Weight | 695 g/ml |
| Martindale | 26,000 |
| Fabric care instruction |     |

Category

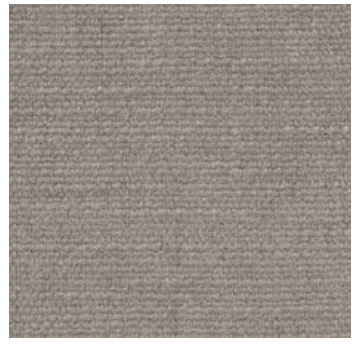




05



07



54



52








53



48

Optim

TECHNICAL PROPERTIES

| PROPERTIES | VALUE |
|-------------------------|---|
| Composition | 56% Polyester 36%Linen 8% Cotton |
| Weight | 800 g/ml |
| Martindale | 25,000 |
| Fabric care instruction |      |

Category



Category

C



1/2



1/6



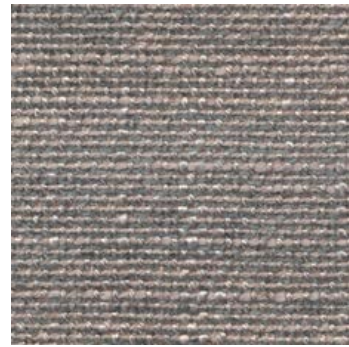
5/3



6/1



6/2



5/4



1/5



1/3



1/24

Acker

TECHNICAL PROPERTIES

| PROPERTIES | VALUE |
|-------------------------|---------------------------------|
| Composition | 59% Viscose 8% Linen 33% Cotton |
| Weight | 975 g/ml |
| Martindale | 35,000 |
| Fabric care instruction | |

Category

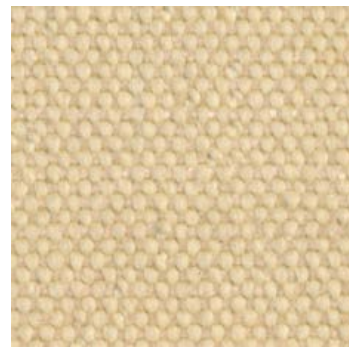




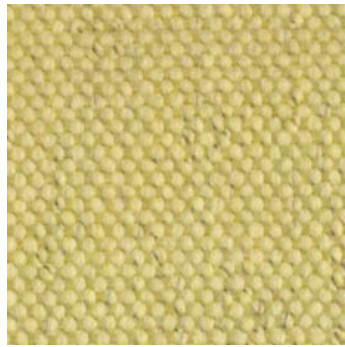
01



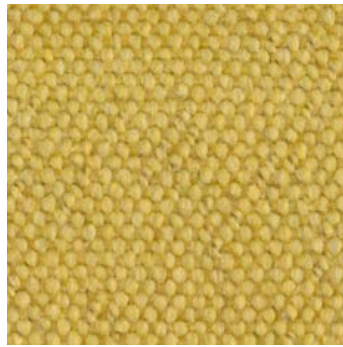
166



444



20



21



15



445








443



11

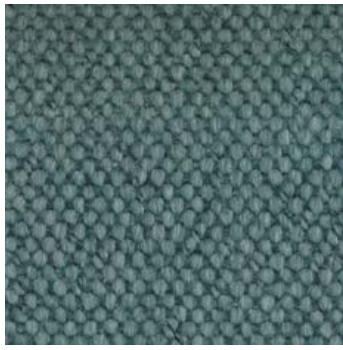
Donnafugata Soft

TECHNICAL PROPERTIES

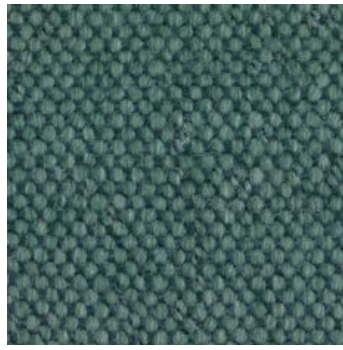
| PROPERTIES | VALUE |
|-------------------------|---|
| Composition | 40% Viscose 35% Acrylic 15% Cotton 10% Polyester |
| Weight | 950 g/ml |
| Martindale | 50,000 |
| Fabric care instruction |      |

Category





12



22



16



168



13



17



18



14



19

Donnafugata Soft

TECHNICAL PROPERTIES

| PROPERTIES | VALUE |
|-------------------------|---|
| Composition | 40% Viscose 35% Acrylic 15% Cotton 10% Polyester |
| Weight | 950 g/ml |
| Martindale | 50,000 |
| Fabric care instruction | |

Category





Gaja Classic

TECHNICAL PROPERTIES

| PROPERTIES | VALUE |
|-------------|----------|
| Composition | 100% Wo |
| Weight | 530 g/ml |
| Martindale | 50,000 |

Category



Fabric care instruction





Gaja Classic

TECHNICAL PROPERTIES

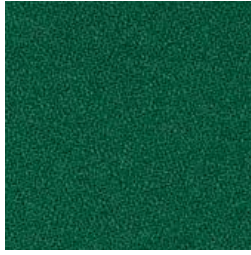
| PROPERTIES | VALUE |
|-------------|-----------|
| Composition | 100% Wool |
| Weight | 530 g/ml |
| Martindale | 50,000 |

Category



Fabric care instruction





68048

Gaja Classic

TECHNICAL PROPERTIES

| PROPERTIES | VALUE |
|-------------------------|-----------|
| Composition | 100% Wool |
| Weight | 530 g/ml |
| Martindale | 50,000 |
| Fabric care instruction | |

Category





13



01



04



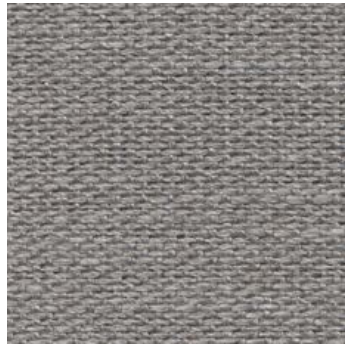
05



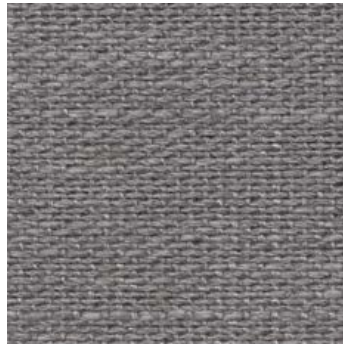
11



02



12



06



09

Sobral

TECHNICAL PROPERTIES

| PROPERTIES | VALUE |
|-------------------------|--|
| Composition | 21% Cotton 53% Viscose 24% Linen 2% Polyamide |
| Weight | 957 g/ml |
| Martindale | 50,000 |
| Fabric care instruction | |

Category





07



03



04



05



06



12



11



10



08

Tundra 01

TECHNICAL PROPERTIES

| PROPERTIES | VALUE |
|-------------------------|--|
| Composition | 38% Cotton 42% Viscose 14% Polyacryl 6% Polyester |
| Weight | 1022 g/ml |
| Martindale | 30,000 |
| Fabric care instruction | |

Category





01



1/31



1/1



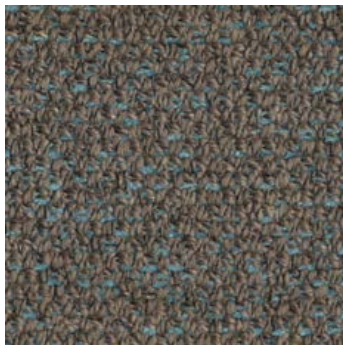
21



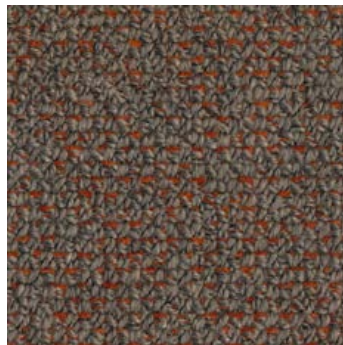
22/19



24/5



23/1



23/15



31

Wilde

TECHNICAL PROPERTIES

| PROPERTIES | VALUE |
|-------------------------|---|
| Composition | 36% Cotton 26% Acrylic 16% Viscose 10% Polyamid 7% Wool 5% Linen |
| Weight | 941 g/ml |
| Martindale | 30,000 |
| Fabric care instruction | |

Category





24



23/100

Wilde

TECHNICAL PROPERTIES

| PROPERTIES | VALUE |
|-------------------------|---|
| Composition | 36% Cotton 26% Acrylic 16% Viscose 10% Polyamid 7% Wool 5% Linen |
| Weight | 941 g/ml |
| Martindale | 30,000 |
| Fabric care instruction | |

Category

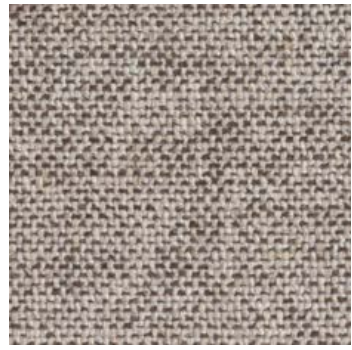




01



1/31



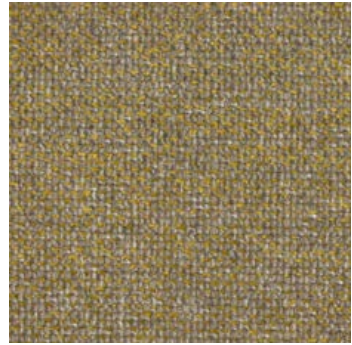
1/1



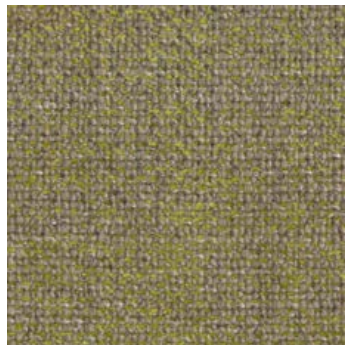
21



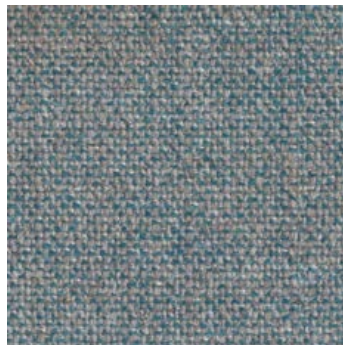
22



22/18



22/19



24/5



23/1

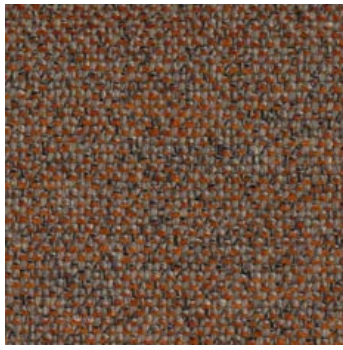
Wilde 01

TECHNICAL PROPERTIES

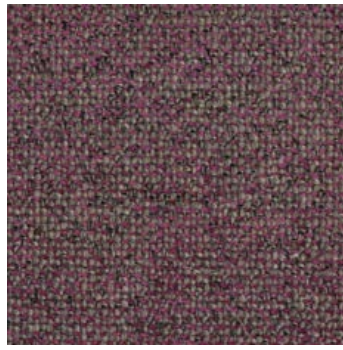
| PROPERTIES | VALUE |
|-------------------------|---|
| Composition | 36% Cotton 26% Acrylic 16% Viscose 10% Polyamid 7% Wool 5% Linen |
| Weight | 915 g/ml |
| Martindale | 35,000 |
| Fabric care instruction | |

Category





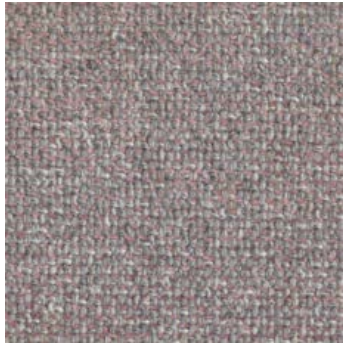
23/15



23/16



31



24/1



24



23/100

Wilde 01

TECHNICAL PROPERTIES

| PROPERTIES | VALUE |
|-------------------------|---|
| Composition | 36% Cotton 26% Acrylic 16% Viscose 10% Polyamid 7% Wool 5% Linen |
| Weight | 915 g/ml |
| Martindale | 35,000 |
| Fabric care instruction | |

Category



Category

D



Europost 2

TECHNICAL PROPERTIES

| PROPERTIES | VALUE |
|-------------------------|-----------|
| Composition | 100% Wool |
| Weight | 800 g/ml |
| Martindale | 50,000 |
| Fabric care instruction | |

Category





Europost 2

TECHNICAL PROPERTIES

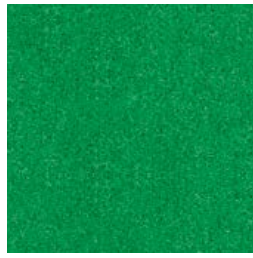
| PROPERTIES | VALUE |
|-------------|-----------|
| Composition | 100% Wool |
| Weight | 800 g/ml |
| Martindale | 50,000 |

Category



Fabric care instruction





68030



68126



68127



68128



62061



62060








68072



68003

Europost 2

TECHNICAL PROPERTIES

| PROPERTIES | VALUE |
|-------------------------|---|
| Composition | 100% Wool |
| Weight | 800 g/ml |
| Martindale | 50,000 |
| Fabric care instruction |      |

Category

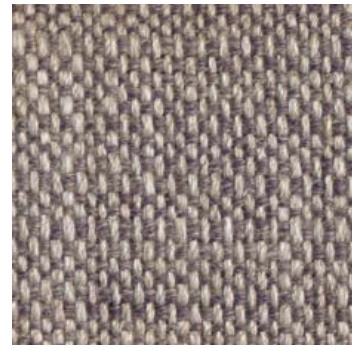




01



1/1



1/3



1/6



1/7



1/8



1/11








1/12



1/13

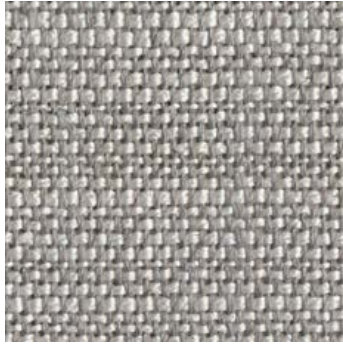
Katmandu

TECHNICAL PROPERTIES

| PROPERTIES | VALUE |
|-------------------------|---|
| Composition | 36% Viscose 32% Linen 24% Acrylic 4% Polyamid 4% Polyester |
| Weight | 1051 g/ml |
| Martindale | 25,000 |
| Fabric care instruction |      |

Category





3/2



1/15



3/3

Katmandu

TECHNICAL PROPERTIES

| PROPERTIES | VALUE |
|-------------------------|---|
| Composition | 36% Viscose 32% Linen 24% Acrylic 4% Polyamid 4% Polyester |
| Weight | 1051 g/ml |
| Martindale | 25,000 |
| Fabric care instruction | |

Category





Luna 2

TECHNICAL PROPERTIES

| PROPERTIES | VALUE |
|-------------------------|------------------------|
| Composition | 90% Wool 10% Polyamide |
| Weight | 680 g/ml |
| Martindale | 70,000 |
| Fabric care instruction | |

Category





4111



4104



4204








4101



4102

Luna 2

TECHNICAL PROPERTIES

| PROPERTIES | VALUE |
|-------------------------|---|
| Composition | 90% Wool 10% Polyamide |
| Weight | 680 g/ml |
| Martindale | 70,000 |
| Fabric care instruction |      |

Category





Maple

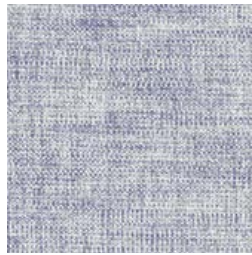
TECHNICAL PROPERTIES

| PROPERTIES | VALUE |
|-------------------------|------------------------------------|
| Composition | 81% Viscose 15% Linen 4% Polyester |
| Weight | 850 g/ml |
| Martindale | 30,000 |
| Fabric care instruction | |





0732



0742



0762



0792



0832



0862

Maple

TECHNICAL PROPERTIES

| PROPERTIES | VALUE |
|-------------------------|------------------------------------|
| Composition | 81% Viscose 15% Linen 4% Polyester |
| Weight | 850 g/ml |
| Martindale | 30,000 |
| Fabric care instruction | |

Category





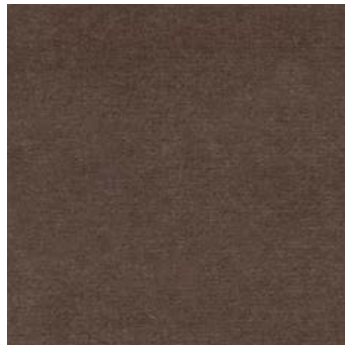
02



03



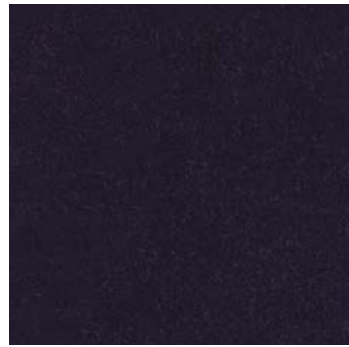
04



05



06



07



10



11



14

Nobilis

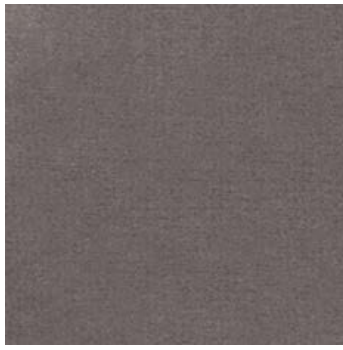
(Velvet)

TECHNICAL PROPERTIES

| PROPERTIES | VALUE |
|-------------------------|-------------|
| Composition | 100% Cotton |
| Weight | 620 g/ml |
| Martindale | >65,000 |
| Fabric care instruction | |

Category





21



22



25

Nobilis

(Velvet)

TECHNICAL PROPERTIES

| PROPERTIES | VALUE |
|-------------------------|-------------|
| Composition | 100% Cotton |
| Weight | 620 g/ml |
| Martindale | >65,000 |
| Fabric care instruction | |

Category



Category

E



Divina 3

TECHNICAL PROPERTIES

| PROPERTIES | VALUE |
|-------------|---------------|
| Composition | 100% New wool |
| Weight | 840 g/ml |
| Martindale | 45,000 |

Fabric care instruction



Category





Divina 3

TECHNICAL PROPERTIES

| PROPERTIES | VALUE |
|-------------------------|---------------|
| Composition | 100% New wool |
| Weight | 840 g/ml |
| Martindale | 45,000 |
| Fabric care instruction | |

Category





Divina 3

TECHNICAL PROPERTIES

| PROPERTIES | VALUE |
|-------------------------|---------------|
| Composition | 100% New wool |
| Weight | 840 g/ml |
| Martindale | 45,000 |
| Fabric care instruction | |

Category





Divina MD

TECHNICAL PROPERTIES

| PROPERTIES | VALUE |
|-------------|---------------|
| Composition | 100% New wool |
| Weight | 840 g/ml |
| Martindale | 45,000 |

Category



Fabric care instruction





0783



0813



0843



0873



0913




0943



0973

Divina MD

TECHNICAL PROPERTIES

| PROPERTIES | VALUE |
|-------------------------|---|
| Composition | 100% New wool |
| Weight | 840 g/ml |
| Martindale | 45,000 |
| Fabric care instruction |      |

Category





Divina Melange 3

TECHNICAL PROPERTIES

| PROPERTIES | VALUE |
|-------------|---------------|
| Composition | 100% New wool |
| Weight | 840 g/ml |
| Martindale | 45,000 |

Category



Fabric care instruction





Divina Melange 3

TECHNICAL PROPERTIES

| PROPERTIES | VALUE |
|-------------|---------------|
| Composition | 100% New wool |
| Weight | 840 g/ml |
| Martindale | 45,000 |

Category



Fabric care instruction





Harald 3

(Velvet)

TECHNICAL PROPERTIES

| PROPERTIES | VALUE |
|-------------|-------------|
| Composition | 100% Cotton |
| Weight | 520 g/ml |
| Martindale | 100,000 |



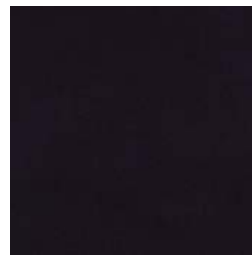
Fabric care instruction



0632



0652



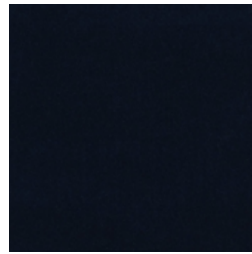
0692



0722



0772



0792



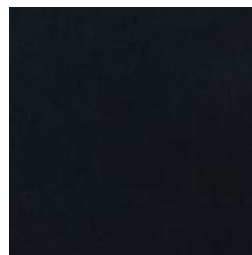
0823



0942




0952



0982

Harald 3 (Velvet)

TECHNICAL PROPERTIES

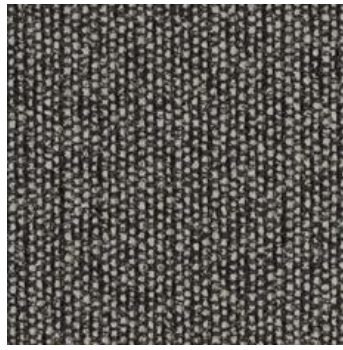
| PROPERTIES | VALUE |
|-------------------------|---|
| Composition | 100% Cotton |
| Weight | 520 g/ml |
| Martindale | 100,000 |
| Fabric care instruction |  |

Category





0122



0152



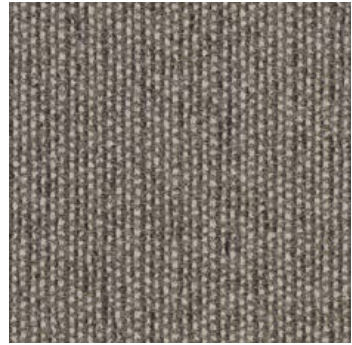
0192



0202



0222



0242



0262



0292



0442

Savana

TECHNICAL PROPERTIES

| PROPERTIES | VALUE |
|-------------------------|---|
| Composition | 34% Polyester 31% New wool 26% Acrylic 4% Cotton 3% Nylon 2% Linen |
| Weight | 680 g/ml |
| Martindale | 45,000 |
| Fabric care instruction | |

Category

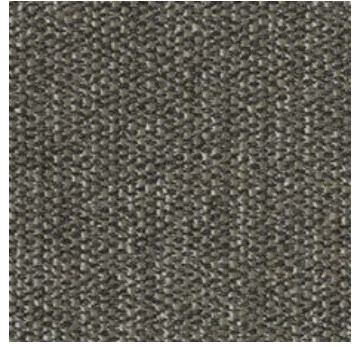




0622



0672



0952

Savana

TECHNICAL PROPERTIES

| PROPERTIES | VALUE |
|-------------------------|---|
| Composition | 34% Polyester 31% New wool 26% Acrylic 4% Cotton 3% Nylon 2% Linen |
| Weight | 680 g/ml |
| Martindale | 45,000 |
| Fabric care instruction | |

Category



Category

F



Comfort+

TECHNICAL PROPERTIES

| PROPERTIES | VALUE |
|-------------------------|--------------------------------|
| Composition | 88% Polyester 12% Polyurethane |
| Weight | 385 g/ml |
| Martindale | >100,000 |
| Fabric care instruction | |





Comfort+

TECHNICAL PROPERTIES

| PROPERTIES | VALUE |
|-------------------------|--------------------------------|
| Composition | 88% Polyester 12% Polyurethane |
| Weight | 385 g/ml |
| Martindale | >100,000 |
| Fabric care instruction | |

Category





Comfort+

TECHNICAL PROPERTIES

| PROPERTIES | VALUE |
|-------------|--------------------------------|
| Composition | 88% Polyester 12% Polyurethane |
| Weight | 385 g/ml |
| Martindale | >100,000 |

Fabric care instruction



Category





0033



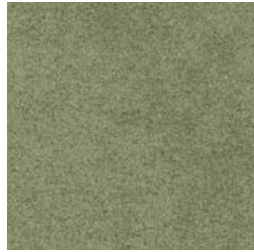
0034



8422



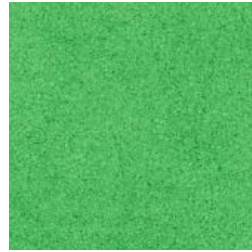
68009



8397



68010



68003



68008



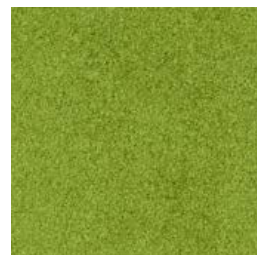
1049



68001



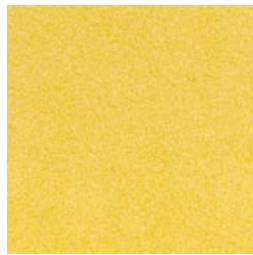
68011



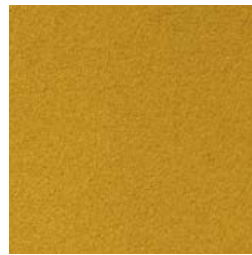
68000



62005



62003



62004



68007



0018

Comfort+

TECHNICAL PROPERTIES

| PROPERTIES | VALUE |
|-------------------------|--------------------------------|
| Composition | 88% Polyester 12% Polyurethane |
| Weight | 385 g/ml |
| Martindale | >100,000 |
| Fabric care instruction | |

Category



**BEN
SEN**

[bensen.com](https://www.bensen.com)