

ORACURA®

YOUR
ADVANCED
DAILY
ORAL CARE
ROUTINE



OC450

THANK YOU

For Choosing ORACURA® To Protect Your Beautiful Smile !

Index

Product Specification	3
Configuration & Charging The Water Flosser®	4
Steps to Use	5
Modes & Steps After Using The Water Flosser®	6
Maintenance	7
Troubleshooting Your ORACURA® Water Flosser®	8
Register Your Warranty	9
Complementary Product Offers & How To Dispose?	10
Safety Guidelines	11
ORACURA® Product Range	12

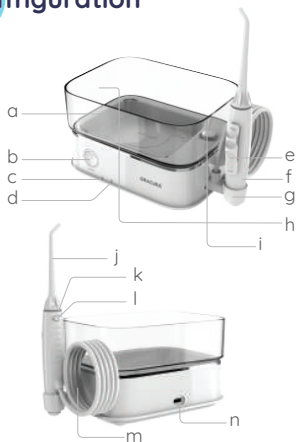
Product Specification



Accessories Included



Configuration



- a] Water Tank
- b] On/Off and Modes Button
- c] Power/Charge Indicator
- d] Mode Indicator
- e] Pressure Control Slider
- f] Water Flosser® Handle
- g] Handle Bracket
- h] Water Volume Mark
- i] Water Tank Rubber Valve
- j] Nozzle
- k] Identification Ring
- l] Nozzle Release Button
- m] Water Pipe
- n] Charging Point

Charging The Water Flosser®

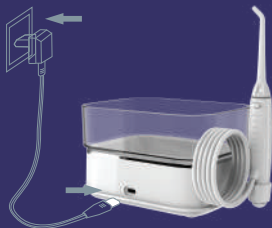
1] Take out the charging point rubber and insert the water flosser® C-type charging connector securely into the charging point socket. Before inserting the plug, ensure that there are no traces of liquid inside the socket.

2] Connect the USB connector to USB power source like Mobile Adapter or Laptop

3] The "CH" indicator blinks when the water flosser® is charging and it will turn off once it is fully charged.

4] If the "CH" indicator blinks during or after water flossing, it means that the water flosser® battery needs to be recharged. Full recharging will take about 4 hours.

5] If the "CH" indicator blinks during or after water flossing, it means that the water flosser® battery needs to be recharged. Full recharging will take about 4 hours.



Steps To Use The Water Flosser®

- 1] Attach the water flosser® handle bracket at the bottom of the flosser and rotate clockwise to ensure that it is properly locked.
- 2] Attach the nozzle to the water flosser® handle.
- 3] Fill the water tank with water and place it firmly on the water flosser®.
- 4] Hold the handle and point the nozzle to the sink, then press the Main Button to turn on the water flosser®.
- 5] Press the button again to select the desired mode. If you're using it for the first time, then the clean mode will be selected by default. The massage mode will be activated by pressing the On/Off button again.
- 6] Move the pressure control slider to adjust the water pressure. If you're using the water flosser® for the first time, we suggest using the lowest pressure setting & gradually increasing the same to suit one's oral care requirements. Press the "On/Off" button to turn off the water flosser.
- 7] Adjust the nozzle direction by rotating the knob of the nozzle.
- 8] Hold the handle in an upright position with the nozzle tip pointing towards your teeth & gums at a 90° angle. Press the "On/Off" button to turn on the water flosser.
- 9] Move the water jet slowly along the teeth to ensure a thorough cleanse. The water flosser® will work till the 2-minute cycle is completed, after which it will shut off. You can turn off the flosser on your own as well.
- 10] Remove the nozzle by pressing the nozzle release button.

Note: Avoid using water warmer than 40°C



Scan for Live Demo

You can schedule a live product demonstration by scanning the above QR code.

2 Operation Modes

You can select the desired operation mode by pressing the On/Off button on your water flosser®.

Clean Mode: The water flow is ideal to thoroughly cleanse all the germs & bacteria from the mouth. It is suitable for everyday oral care routine. Blue light is indicated when the clean mode is on.

Massage Mode: It helps in advanced gum stimulation and is used ideally for massaging the gums. It assists in ensuring clean, fresh, and healthy gums and teeth. Green light is indicated when the massage mode is on.



Steps After Using The Water Flosser®

- 1] Dispose of the water in the tank.
- 2] Push the pressure control switch to the 'High' position. Turn on the water flosser® & drain out the remaining water. Move the pressure control slider to the 'Low' position again
- 3] Turn off the water flosser®.
- 4] Wipe the water flosser® with a dry cloth.
- 5] Remove the nozzle and store it properly.

To prevent bacteria, make sure there are no water traces inside the water tank. If you're not going to use the flosser for a long time, be sure to wipe and dry the same before preserving it.

Disassembly for Travel

- 1] Point the tip into the sink and extend the water pipe to drain all remaining water.
- 2] Remove and empty the water tank.
- 3] To prevent bacteria, make sure there are no water traces inside the water tank.
- 4] Disconnect the water flosser® handle bracket from the main unit by rotating it in an anticlockwise direction.
- 5] Be sure to wipe and dry the water flosser® before preserving it.
- 6] Slide base unit into the water tank.



Before



After

Maintenance

Use only water or neutral washing agents to clean the water flosser®. Never use caustic or abrasive agents (For eg. vinegar or limescale removers). Do not use water/ cleaning fluids over 40°C. Keep the water flosser® in a cool place and avoid sunlight.



Main Unit

1] To remove dirt, wipe the unit with a damp cloth (using liquid soap/ water) and then wipe it again with a dry cloth.

2] Do not submerge the main unit in water.



Handle

Wash with water and dry up with a soft cloth. Do not bend, pull or twist the water pipe.



Nozzle

Wash with water and wipe with a soft cloth. Replace the nozzle after every 3-4 months.

(Please Note: The nozzle tips should be replaced after every 3-4 months.)



Tank

1] Wash with water and wipe with a soft cloth.
2] Keep the tank dry and away from sunlight when not in use for a long period.

Problem-Solving

Problems	Reasons	Solutions
It does not work.	You have just purchased the product or it has been left unused for more than 3 months.	Charge the product for at least 4 hours.
It only works for a few minutes even after charging.	The battery has reached the end of its life cycle. Charging time was insufficient	Contact the service centre for support. Charge the product for at least 4 hours.
Water Pressure is very low	There is dirt stuck in the nozzle. The nozzle is deformed. There is dirt stuck in the filter	Replace the nozzle. Replace the nozzle. Clean the filter.
Water is not coming out of the product.	The tank is empty The product is tilted too much while in use There must be air caught in the pipe.	Fill up the tank. Use the product in the vertical position. Slide the switch to adjust the pressure.
Tank Leaks	The water tank rubber valve was lost The water tank rubber valve isn't installed in place.	Replace with a new water tank rubber valve. Take off the water tank rubber valve and reinstall again.

ORACURA® Tips for Personalized Care



Standard Tip
For Everyday Use



Tongue Scraper
For Fresher Breath



Orthodontic Tip
For Braces & Orthodontics



Pocket Tip
For Periodontal Pockets



Implant Tip
To Clean Implant Bridges



Nasal Tip
To Rinse The Nasal Cavities

Register Your Warranty

ORACURA's OC450 Smart Water Flosser® is covered under 365 days warranty period.



Register your product by scanning the QR code or visiting the link given below.

<https://oracura.in/pages/register>

365 days of limited warranty is applicable for material, manufacturing, or operational defects existing at the time of delivery or for the occurrence of any operational error during regular use. Any mishandling of the product or alteration/repair done by an unauthorized person will void the warranty. Consumer is required to submit the original purchase invoice as proof of purchase date and if requested, the entire product, to support a warranty claim.

*Please note that the warranty does not include the product accessories and spare parts.

Buy Extended Warranty



Choose Up to
1095-Days Extended Warranty

This product comes with a default 365 Days Warranty. Enjoy additional warranty of up to 1095 days! It can be purchased from the website within 30 days of your product order date.

If you face any problems while using our product or have any complaints regarding the same, we advise you to visit our return policy page.

<https://oracura.in/pages/return-policy>



Scan to Purchase
Additional Warranty



Complementary Product Offers

Go Beyond Manual Brushing with Our Sonic Electric Toothbrushes.



If you have purchased an ORACURA® product, then this is your chance to explore various offers complementing your purchased product. Scan the QR code for further details.

Visit: <https://oracura.in/collections/sonic-electric-toothbrush>

DISPOSAL

The rechargeable battery inside your water flosser® is easy to remove for recycling. At the end of the water flosser®'s life and prior to disposal, please remove the rechargeable battery from the handle by following the instructions below. During the below operation, be sure to protect your eyes, hands, fingers, and the surface on which you work.

1] Please discharge the battery power before removing the battery.

2] Remove the water tank, use a sharp hard object to remove the bottom rubber pad (Refer Fig. 1), remove the screws under the rubber pad, and open the shell. (Refer Fig. 2)

3] Open the shell and take out the core components, and use a screwdriver to pry open the battery cover (Refer Fig. 3).

4] Cut off the battery line and pull out the batteries from the inside. (Refer Fig. 4)

If you have recycling questions, please contact your local waste management office.

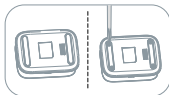


Fig. 1



Fig. 2



Fig. 3



Fig. 4

Safety Guidelines

Read All Instructions Carefully Before Using The Water Flosser®

CAUTION

- Toddlers or infants should not be allowed to use the product. Keep it out of the reach of children.
- Never try to alter, disassemble or repair the product.
- Do not place or store the product where it can fall or be pulled into a tub or sink.
- Do not use the product under wet conditions. (For eg. bathing)
- Be careful while using the product. The strong force of water spray may hurt sensitive organs of your body.

WARNINGS

- This product can be used by children aged 8 years and above. People with reduced physical, sensory or mental capabilities, lack of experience, and knowledge can also use the product if given proper supervision or instruction.
- Use the product only with the charging cable that is provided.
- Make sure to remove the battery before scrapping the product. The battery should be disposed of safely.
- Please refer to the "disposal" section for any concerns regarding the removal of the battery. The product must be disconnected from the supply while removing the battery.
- Do not fill the tank with water warmer than 40°C.
- Never use the adaptor if it has a damaged cord or plug.
- Keep the cord away from heated surfaces.
- Do not use the product without a nozzle.
- Do not submerge the product in water. Use the product only for oral cleaning purposes.
- Do not only use mouthwash or any antibacterial rinses in the water tank.
- The concentrated chemical may damage the product by causing the water tank to crack.
- People who experience tooth or gum pain may not be able to use this product and should consult their dentist.
- Do not press the nozzle too firmly against your teeth or gums.
- You may experience gum bleeding during the initial stage of using the flosser. However, with regular usage, the product shouldn't hurt anymore.

ORACURA® Product Range

ORACURA® also offers various products such as:

- Water Flossers
- Sonic Electric Toothbrushes
- Combo Packs
- Spare Parts
- Accessories

For the complete product range, Visit: <https://oracura.in/>

Keep Your Product Up & Running, Always!

Accessories & Spare Parts To Buy with OC450



Standard
Tip



Orthodontic
Tip



Tongue
Scraper



Pocket tip



Protective
Pouch



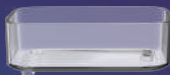
USB Charging
Cable



Nasal Tip



Nasal Tip



Water Tank



Water Flosser®
Handle



Water Tank
Rubber Valve

Service Station:

ORACURA® Solutions Pvt. Ltd.

6th Floor, Unit 1, Plot No 233/2 Vidhani Kalpavruksha, MIDC
Industrial Area, T.T.C. Industrial Area, Mumbai - Pune Hwy,
Shiravane, Nerul, Navi Mumbai, Maharashtra, 400706.

Visit Us: www.oracura.in Email: support@oracura.in

Certificated Partner



Charged by
AC/DC adaptaer (DC 5V)