

ORACURA®

YOUR
ADVANCED
DAILY
ORAL CARE
ROUTINE



ECO

OCE01

THANK YOU

For Choosing ORACURA® To Protect Your
Beautiful Smile!

Index

Product Specification	3
Configuration	4
Charging The Water Flosser®	4
Steps to Use	5
Steps After Using The Water Flosser®	6
Maintenance	7
Troubleshooting Your ORACURA® Water Flosser®	8
Register Your Warranty	9
Complementary Product Offers	10
How To Dispose?	10
Safety Guidelines	11
ORACURA® Product Range	12

Product Specification



Accessories Included



150ml Water Tank



Operational Manual

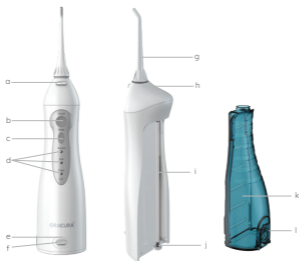


USB Charging Cable



Standard Nozzle x 2

Configuration



- a) Nozzle Release Button
- b) On/Off Button
- c) Mode Button
- d) Mode Indicators
- e) Charging Point
- f) Charging Point Rubber
- g) Nozzle
- h) Identification Ring
- i) Water Tank Suction Pipe
- j) Water Tank Pipe Filter
- k) Water Tank
- l) Water Tank Cap

Charging The Water Flosser®

1] Take out the charging point rubber and insert the water flosser® plug securely into the charging point socket. Before inserting the plug, ensure that there are no traces of liquid inside the socket.

2] Connect the charging adaptor to the power outlet.

3] The "CH" indicator blinks when the water flosser® is charging and it will turn off once it is fully charged.

4] After charging, cover the charging point again with charging point rubber. If the "CH" indicator blinks during or after water flossing, it means that the water flosser® battery needs to be recharged. Full recharging will take about 4 hours.



Steps to Use The Water Flosser®

1] Attach the nozzle to the water flosser® handle.

2] Open the water tank cap and fill the tank with water.

OR

Slide the Water tank down to take it off the water flosser®. Fill the water tank with water and connect it to the water flosser® again.

3] Select the desired mode by pressing the "Mode" button.

4] Place the tip in the mouth. Keep your mouth slightly open, to let the water flow out and to avoid any water splash.

5] Press the "On/Off" button to switch on the water flosser®. Start with gently cleaning the back teeth and work gradually towards the front teeth.

5a] Direct the stream at a 90-degree angle to your gumline.

5b] Glide the tip along the gumline and pause briefly between teeth.

5c] Clean the inside and outside of both the upper and lower teeth.

5d] Clean between the teeth and around any braces, crowns, bridgework thoroughly.

6] Turn off the device by pressing the "On/Off" button again.

7] Remove the nozzle by pressing the nozzle release button.

Note: Avoid using water warmer than 40° C



Scan for Live Demo

You can schedule a live product demonstration by scanning the above QR code.

3 Operation Modes

You can select the desired operation mode by pressing the mode button on your water flosser® handle.

Normal Mode: Higher water pressure ensures advanced cleaning. Ideal for everyday use.

Pulse Mode: The flow of water comes out in short bursts, which is ideal for cleaning & massaging the gums.

Soft Mode: The low water pressure allows for gentle cleaning of the mouth. Ideal for first-time users, children (age 8+ years), the elderly, and people with gum problems.



Steps After Using The Water Flosser®

- 1] Open the water tank cap and dispose of the water from the tank.
- 2] Press the On/Off button to turn on the water flosser® and drain out the remaining water.
- 3] Press the On/Off button again to turn off the water flosser®, and close the water tank cap.
- 4] Wipe the flosser with a dry cloth.

To prevent bacteria, make sure there are no water traces inside the water tank. If you're not going to use the flosser for a long time, be sure to wipe and dry the same before preserving it.

Maintenance

Use only water or neutral washing agents to clean the Water Flosser®. Never use caustic or abrasive agents (For eg. vinegar or limescale removers). Do not use water/ cleaning fluids over 40°C. Keep the Water Flosser® in a cool place and avoid sunlight.

Main Unit

- 1] To remove dirt, wipe the unit with a damp cloth (using liquid soap/ water) and then wipe it again with a dry cloth.
- 2] Do not submerge the main unit in water.



Water Tank Cap

Wipe off any grime or dirt with a cloth.

Nozzle

- 1] Wash with water and wipe with a soft cloth.
- 2] Replace the nozzle after every 3-4 months.

Water Tank Suction Pipe

- 1] Wash with water and wipe with a soft cloth.
- 2] Do not bend, pull or twist.



Tank

- 1] Wash with water and wipe with a soft cloth.
- 2] Keep the tank dry and away from sunlight when not in use for a long period.



Troubleshooting Your ORACURA® Water Flosser®

Problem	Possible Cause	Solution
It does not work.	You have just purchased the product or it has been left unused for more than 3 months.	Charge the product for at least 4 hours.
It only works for a few minutes even after charging.	The battery has reached the end of its life cycle.	Contact the service center for support.
	Charging time was insufficient.	Charge the product for at least 4 hours.
Water Pressure is very low.	There is dirt stuck in the nozzle.	Replace the nozzle.
	The nozzle is deformed.	
	There is dirt stuck in the filter.	Clean the filter.
Water is not coming out of the product.	The tank is empty.	Fill up the tank.
	The product is tilted too much while in use.	Use the product in the vertical position.
	There must be air caught in the pipe.	Remove the tip, close the open mouth with your thumb and shake the Water Flosser®.



Please Note: The nozzle tips should be replaced after every 3-4 months.

Register Your Warranty

ORACURA's OCE01 Eco Water Flosser® is covered under 12 + 6 months warranty period.



For the extended 6 months warranty, register your product by scanning the QR code or visiting the link given below.
<https://oracura.in/pages/register>

12-months of limited warranty is applicable for material, manufacturing, or operational defects existing at the time of delivery or for the occurrence of any operational error during regular use. Any mishandling of the product or alteration/repair done by an unauthorized person will void the warranty. Consumer is required to submit the original purchase invoice as proof of purchase date and if requested, the entire product, to support a warranty claim.

If you face any problems while using our product or have any complaints regarding the same, we advise you to visit our return policy page.
<https://oracura.in/pages/return-policy>



Complementary Product Offers

Go Beyond Manual Brushing with Our Sonic Electric Toothbrushes.



If you have purchased an ORACURA® product, then this is your chance to explore various offers complementing your purchased product. Scan the QR code for further details.

Visit: <https://oracura.in/collections/sonic-electric-toothbrush>

DISPOSAL

The rechargeable battery inside your Water Flosser® is easy to remove for recycling. At the end of the Water Flosser®'s life and prior to disposal, please remove the rechargeable battery from the handle by following the instructions below. During the below operation, be sure to protect your eyes, hands, fingers, and the surface on which you work.

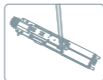
- 1] Remove 2 rubber feet given at the bottom of the handle. (Ref. Fig. 1)
- 2] Insert a screwdriver into the slot located at the bottom of the handle and turn counter-clockwise to release the bottom cap. (Ref. Fig. 1)

- 3] Slide the water tank down off the Water Flosser® and unscrew the two screws beside the water tank suction pipe. (Ref. Fig. 2)
- 4] Remove the top cover and put the inner component unit out, then unscrew all the inner screws. (Ref. Fig. 3)
- 5] Remove the battery wire and take the batteries out from the inside. (Ref. Fig. 4)

If you have recycling questions, please contact your local waste management office.



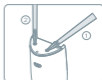
Ref. Fig. 2



Ref. Fig. 3



Ref. Fig. 4



Ref. Fig. 1

Safety Guidelines

Read All Instructions Carefully Before Using The Water Flosser®

CAUTION

- Toddlers or infants should not be allowed to use the product. Keep it out of the reach of children.
- Never try to alter, disassemble or repair the product.
- Do not place or store the product where it can fall or be pulled into a tub or sink.
- Do not use the product under wet conditions. (For eg. bathing)
- Be careful while using the product. The strong force of water spray may hurt sensitive organs of your body.

WARNINGS

- This product can be used by children aged 8 years and above. People with reduced physical, sensory or mental capabilities, lack of experience, and knowledge can also use the product if given proper supervision or instruction.
- Use the product only with the power supply unit that is provided.
- Make sure to remove the battery before scrapping the product. The battery should be disposed of safely.
- Please refer to the "disposal" section for any concerns regarding the removal of the battery. The product must be disconnected from the supply while removing the battery.
- Do not fill the tank with water warmer than 40°C.
- Never use the adaptor if it has a damaged cord or plug.
- Keep the cord away from heated surfaces.
- Do not use the product without a nozzle.
- Do not submerge the product in water. Use the product only for oral cleaning purposes.
- Do not only use mouthwash or any antibacterial rinses in the water tank.
- The concentrated chemical may damage the product by causing the water tank to crack.
- People who experience tooth or gum pain may not be able to use this product and should consult their dentist.
- Do not press the nozzle too firmly against your teeth or gums.
- You may experience gum bleeding during the initial stage of using the flosser. However, with regular usage, the product shouldn't hurt anymore.

ORACURA® Product Range

ORACURA® also offers various products such as:

- Water Flossers
- Sonic Electric Toothbrushes
- Combo Packs
- Spare Parts
- Accessories

For the complete product range, visit <https://oracura.in/>

Keep Your Product Up & Running, Always!

Accessories & Spare Parts To Buy with OCE01



Standard
Tip



Orthodontic
Tip



Tongue
Scraper



Pocket
Tip



Protective
Case



Protective
Pouch



Charging Point
Rubber



150ml/300ml
Water Tank
Capacity



Water Tank
Suction Pipe



Handle



USB Charging
Cable

Service Station:

ORACURA® Solutions Pvt. Ltd.

6th Floor, Unit 1, Plot No 233/2 Vidhani Kalpavruksha, MIDC Industrial Area, T.T.C. Industrial Area, Mumbai - Pune Hwy, Shiravane, Nerul, Navi Mumbai, Maharashtra, 400706

Visit Us: www.oracura.in Email: support@oracura.in



ISO9001 & ISO13485 Certificated Manufacturer



Certificated Manufacturer