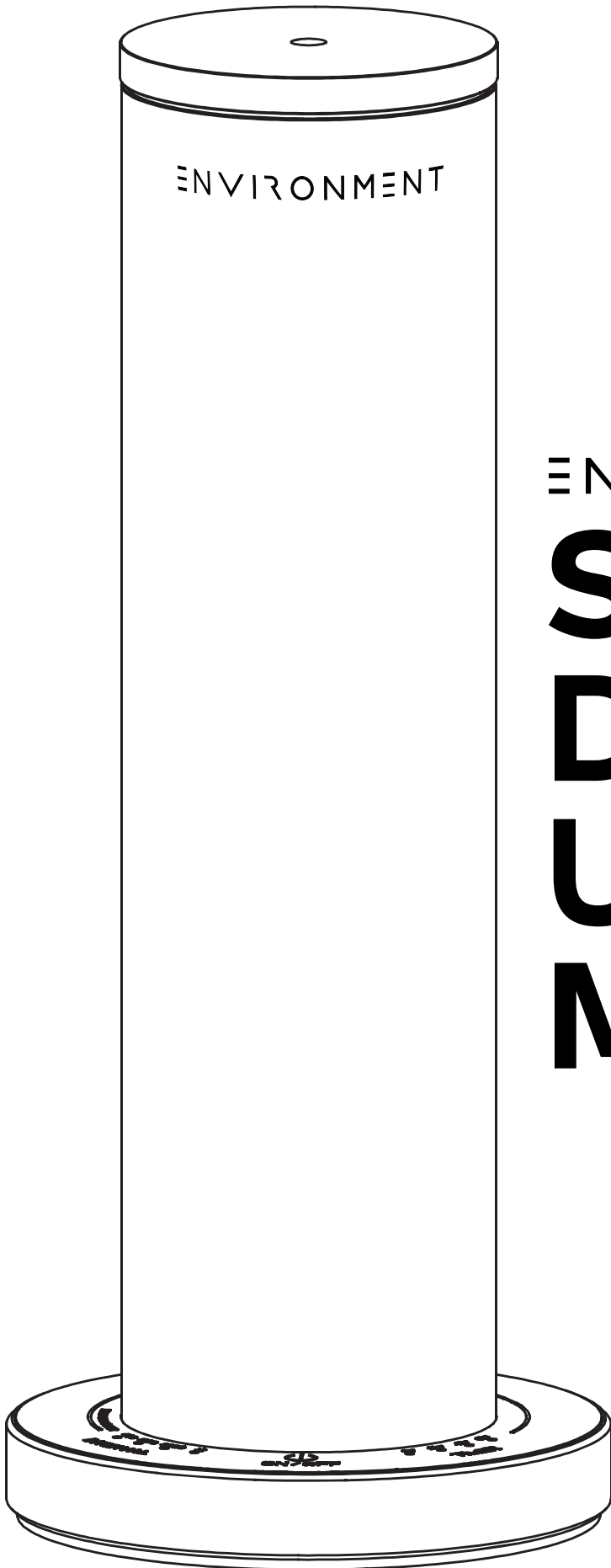


ENVIRONMENT

**QUICK
START
GUIDE**



ENVIRONMENT

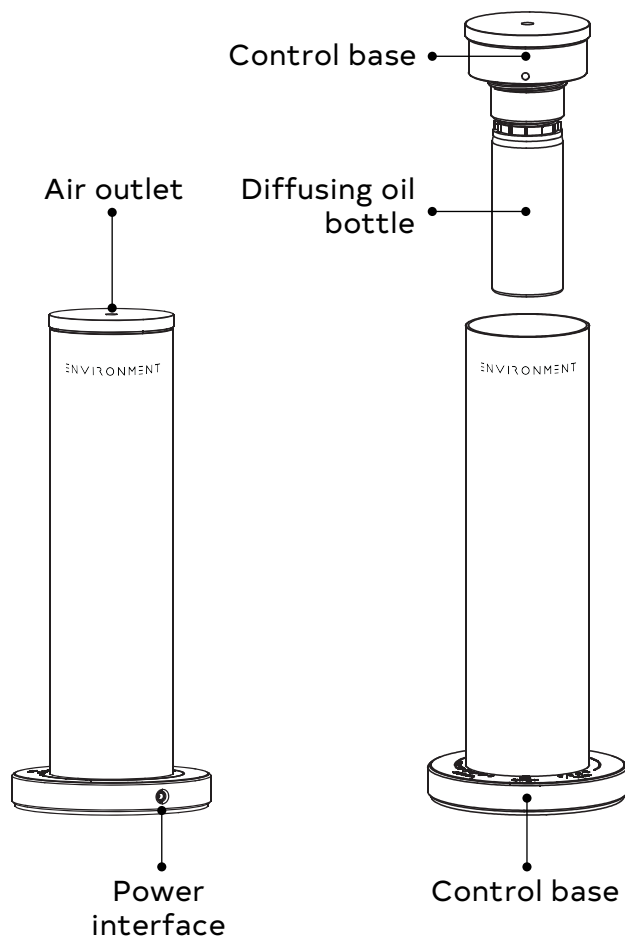
**SCENT
DIFFUSER
USER
MANUAL**

WELCOME TO ENVIRONMENT!

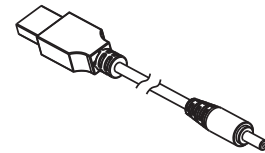
Thank you for discovering your scent machine with us. If this is your first machine, we appreciate you joining the ENVIRONMENT family and enjoy the smart automation of wirelessly controlling your olfactory somatic scent experience for your home and business.

IN THE BOX

Environment Scent Machine



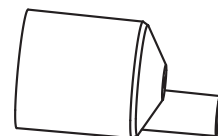
Power Cable



User manual



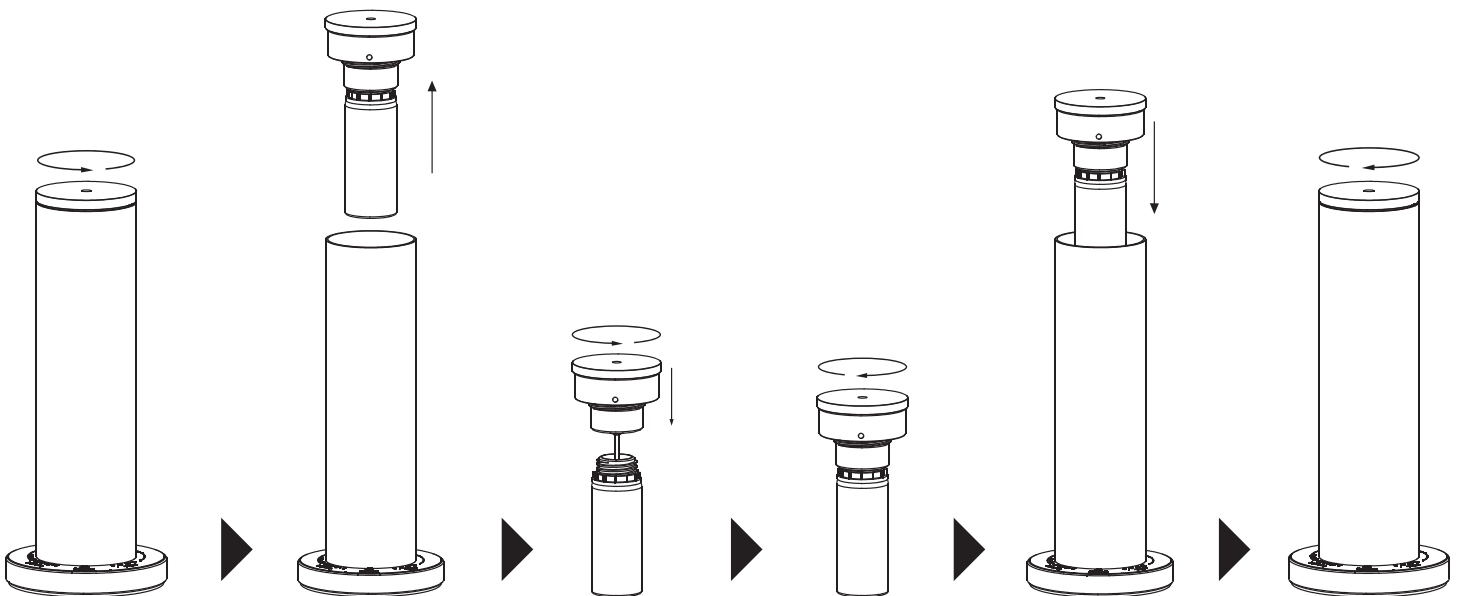
Atomizer core



GET STARTED

A. FILLING THE DIFFUSING OIL BOTTLE

Instruction of Diffusing Oil



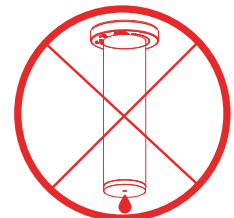
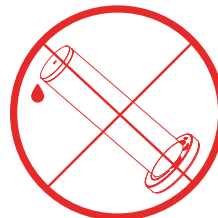
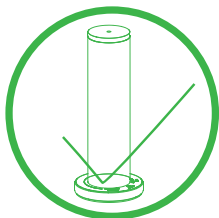
Step 1: Open the atomizer counterclockwise and lift up the atomizer and diffusing oil bottle, and take out.

Step 2: Fill the diffusing oil bottle with ENVIRONMENT diffusing oil.

Step 3: Secure the diffusing oil bottle and put it back into the scent machine. Close it clockwise and tighten it.

Step 4: Set working hours and start using the equipment.

IMPORTANT! DO NOT TURN IT OVER!

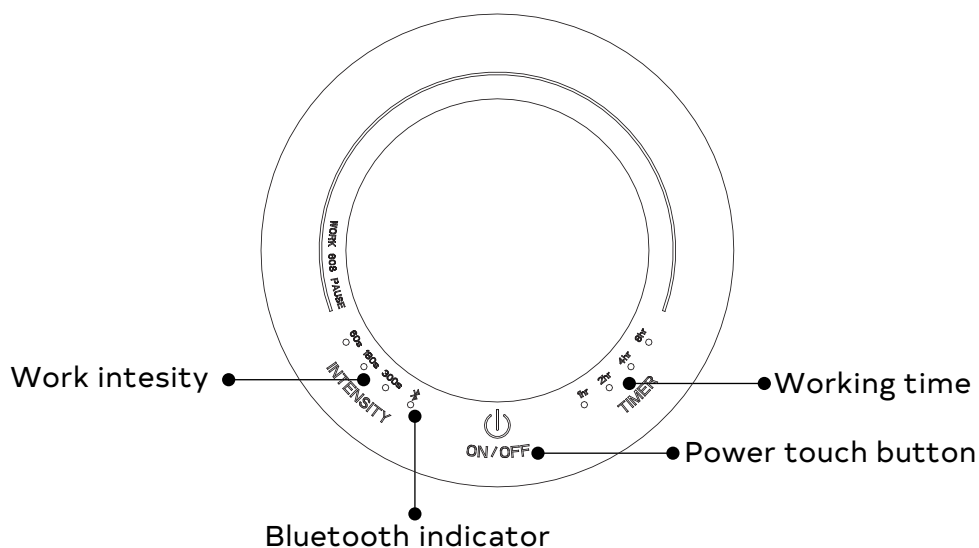


B. POWER ON

Step 1: Grab your Power Adapter, Plug in USB C and plug into power socket.

Step 2: Press On/ Off button (Blue light indicates the unit is on and ready to use).

Description of LCD Display



C. CONTROL INTENSITY (USING TOUCH FEATURE)

Lightly touch the word "INTENSITY" to activate the options.

- > 60 Seconds - Strongest setting (60 second on, 60 seconds off)
- > 180 Seconds - Medium setting (60 second on, 180 seconds off)
- > 300 Seconds - Lightest setting (60 second on, 300 seconds off)

D. CONTROL TIME (USING TOUCH FEATURE)

Lightly touch "TIMER" key to set the countdown time to 1/2/4/8 hours in turn, and the corresponding indicator lights will light up.

MAINTENANCE

In order to ensure the best diffusing effect, please check and maintain the device every six months, or when you replace a new fragrance, or when the diffusing effect gets weak as the following steps:

1. Take off the oil canister which is used.
2. Filling industrial alcohol into the canister and clean it.
3. After cleaning the oil canister, refill canister with little alcohol and install it on the device then make the device stay in working status for 5-8 minutes.
4. Turn off the power when done cleaning.

Attention

Please read this manual in detail before using the device and keep it carefully.

1. Please do not use overloaded power sockets, broken wire and charger. It may endanger your safety and cause a fire, please replace in time if it happens.
2. Please do not try to modify, disassemble or repair the device in order to avoid damage to the device, if you are not a technician. If the device is abnormal, please check whether it is operated normally according to the user manual, or check according to the Malfunction Debugging. If it cannot be solved, please contact seller timely.
3. Please do not invert or tilt the device when used. If the device needs to be transported to other sites, please maintain and clean the device (see Maintenance for details) first before package and transportation, in case of oil leakage to damage the device.
4. Please maintain and clean the device regularly to ensure the device is in best working condition.

Malfunction Debugging

Please try to solve the problem as below before fixing the machine.

Breakdown	Solution
Not Working	<ul style="list-style-type: none">• Check if power adapter is DC5V-1A, and check if DC power interface is well-connected or not.• Check if device is not in work period.
No mist/ Mist gets weak	<ul style="list-style-type: none">• Check if pump works or not, and if airflow from air outlet.• Check if atomizer core and oil tube are loose or blocked.• Check if seal ring gets damaged or fall off.
Oil leakage	<ul style="list-style-type: none">• Check if canister connects to atomizer closely.• Check if seal ring is deformed or damaged• Check if atomizer is damaged.
Abnormal noise	<ul style="list-style-type: none">• Check if air pump is loose, please fix it correctly.• Check if air pump is damage, please replace a new one.

After-sale Service

The warranty is 1 year from the date of sale, not including device shell, adapter, electric wires, seal ring and the other vulnerable parts, as well as the damage caused by human or accident. Permanent maintaining for value will be provided if the machine exceed the warranty.

If there is any issue of after-sales, please contact authorized sales service in corresponding area, or contact Sales Center directly.