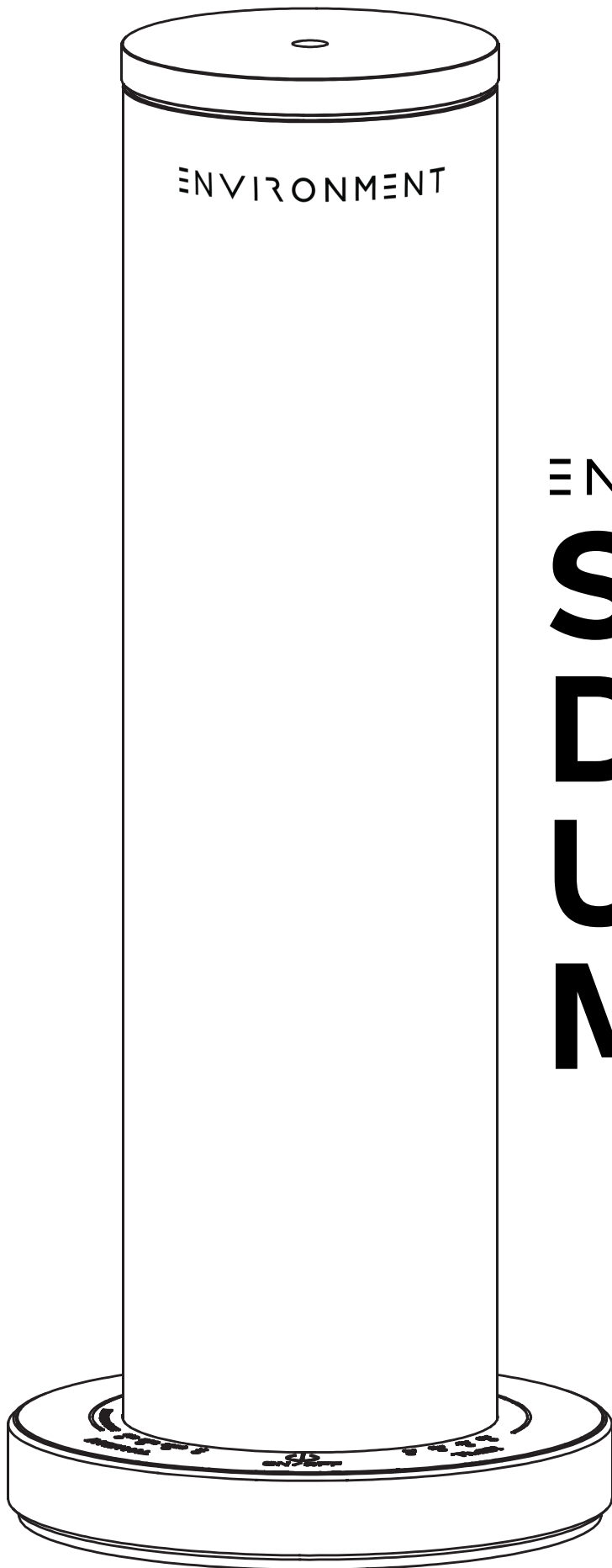


ENVIRONMENT

**QUICK
START
GUIDE**



ENVIRONMENT

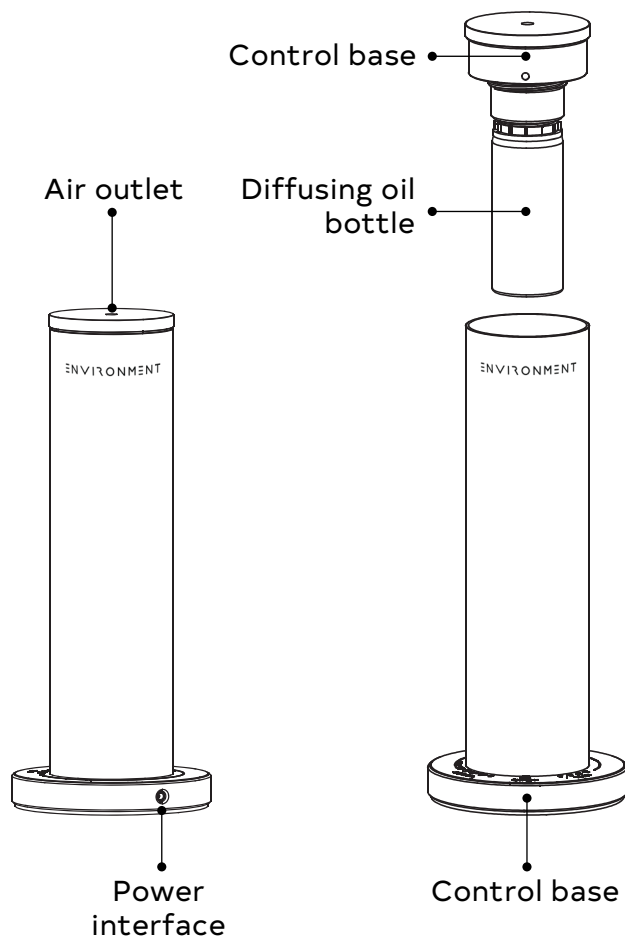
**SCENT
DIFFUSER
USER
MANUAL**

WELCOME TO ENVIRONMENT!

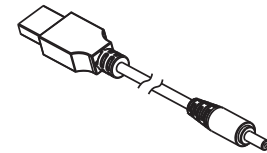
Thank you for discovering your scent machine with us. If this is your first machine, we appreciate you joining the ENVIRONMENT family and enjoy the smart automation of wirelessly controlling your olfactory somatic scent experience for your home and business.

IN THE BOX

Environment Scent Machine



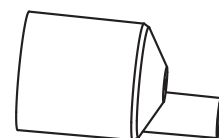
Power Cable



User manual



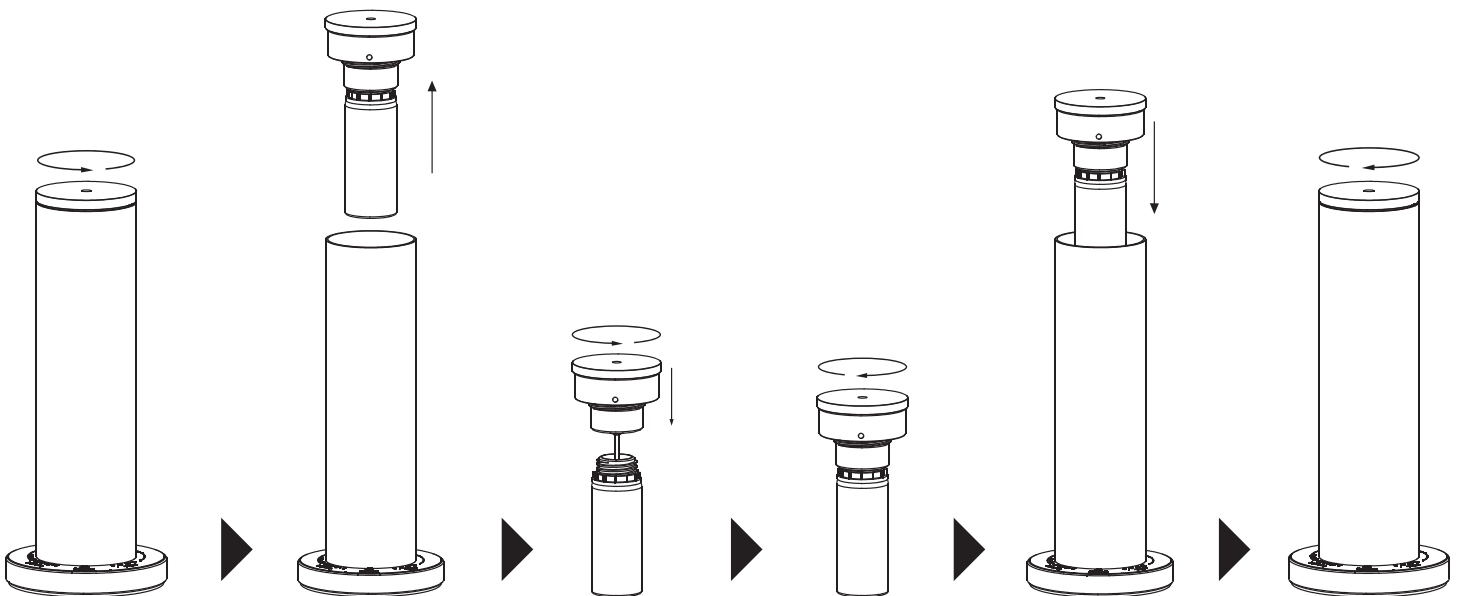
Atomizer core



GET STARTED

A. FILLING THE DIFFUSING OIL BOTTLE

Instruction of Diffusing Oil



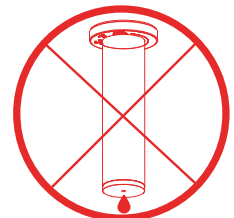
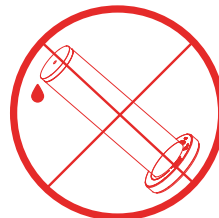
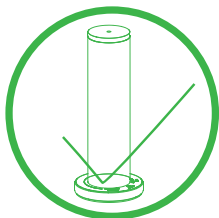
Step 1: Open the atomizer counterclockwise and lift up the atomizer and diffusing oil bottle, and take out.

Step 2: Fill the diffusing oil bottle with ENVIRONMENT diffusing oil.

Step 3: Secure the diffusing oil bottle and put it back into the scent machine. Close it clockwise and tighten it.

Step 4: Set working hours and start using the equipment.

IMPORTANT! DO NOT TURN IT OVER!

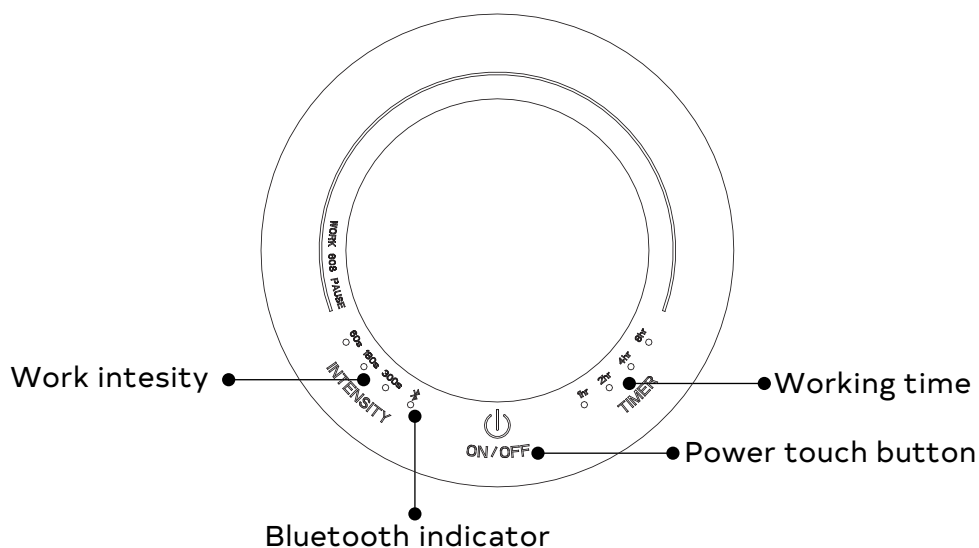


B. POWER ON

Step 1: Grab your Power Adapter, Plug in USB C and plug into power socket.

Step 2: Press On/ Off button (Blue light indicates the unit is on and ready to use).

Description of LCD Display



C. CONTROL INTENSITY (USING TOUCH FEATURE)

Lightly touch the word "INTENSITY" to activate the options.

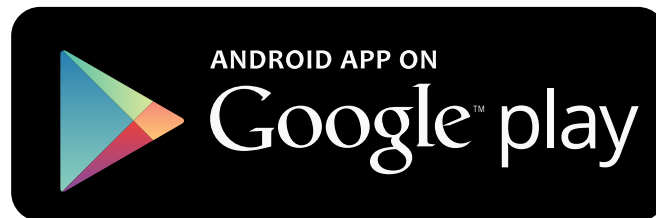
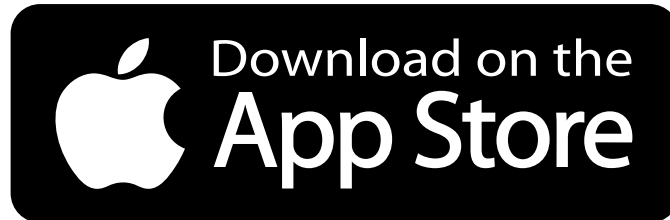
- > 60 Seconds - Strongest setting (60 second on, 60 seconds off)
- > 180 Seconds - Medium setting (60 second on, 180 seconds off)
- > 300 Seconds - Lightest setting (60 second on, 300 seconds off)

D. CONTROL TIME (USING TOUCH FEATURE)

Lightly touch "TIMER" key to set the countdown time to 1/2/4/8 hours in turn, and the corresponding indicator lights will light up.

PAIR WIFI AND BLUETOOTH (Full App Control Features)

1. Download the Aroma World app & sign in or create an account.

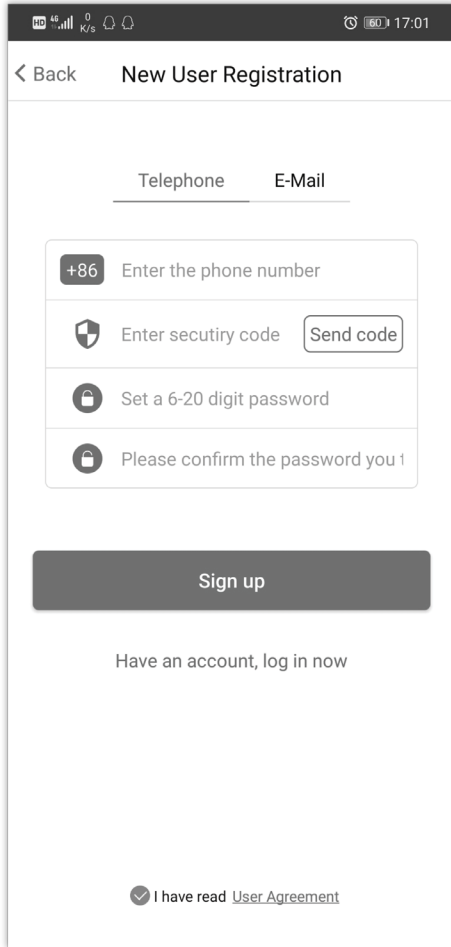


- Step 1:** Long press "INTENSITY" to switch to Bluetooth mode.
(When the Bluetooth indicator light is always on and "TIMER" light is off, it is in Bluetooth mode at this time.)
- Step 2:** Turn on the phone GPS/location, Bluetooth;
- Step 3:** When the mobile phone is connected to the device, the blue indicator light will flash slowly;
- Step 4:** During data exchange, the blue indicator light will flash quickly;
- Step 5:** When the device is restarted, the settings from the last shutdown are automatically retained.

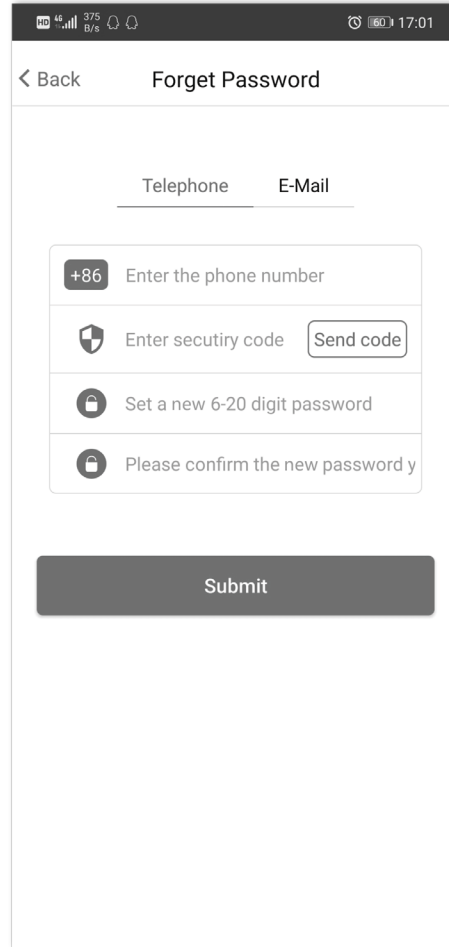
Working frequency: The spray time can be adjusted for 5 to 300 seconds, and the pause time can be adjusted for 5 to 300 seconds.

Working day setting: The default is every day, and other settings are adjustable for the week.

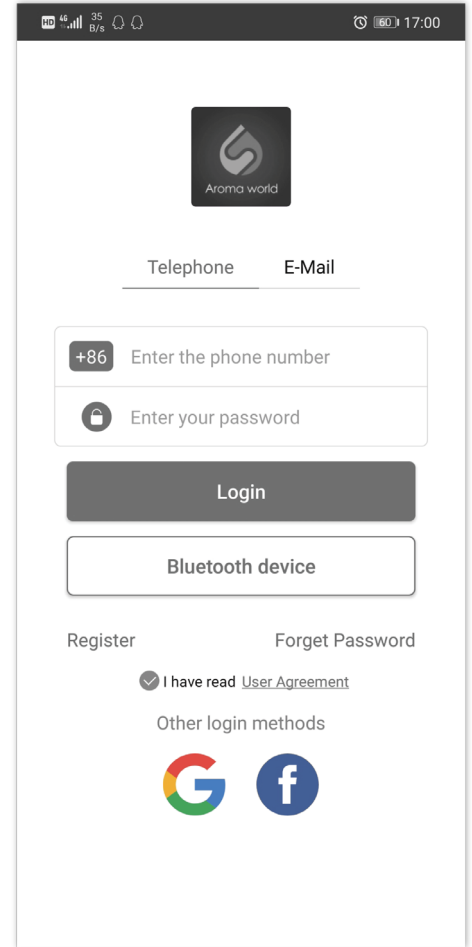
2. Sign up and log in



The 'New User Registration' screen features a 'Back' button at the top left. Below the title, there are two tabs: 'Telephone' and 'E-Mail'. The form includes four input fields: a phone number field with a '+86' country code selector, a security code field with a 'Send code' button, a 6-20 digit password field, and a confirm password field. A large 'Sign up' button is positioned below the form. At the bottom, there is a link for users who already have an account to log in, and a checked checkbox for 'I have read User Agreement'.



The 'Forget Password' screen has a 'Back' button at the top left. It features two tabs: 'Telephone' and 'E-Mail'. The form contains four input fields: a phone number field with a '+86' country code selector, a security code field with a 'Send code' button, a new 6-20 digit password field, and a confirm new password field. A large 'Submit' button is located below the form. At the bottom, there are links for 'Register' and 'Forget Password', a checked checkbox for 'I have read User Agreement', and a section for 'Other login methods'.



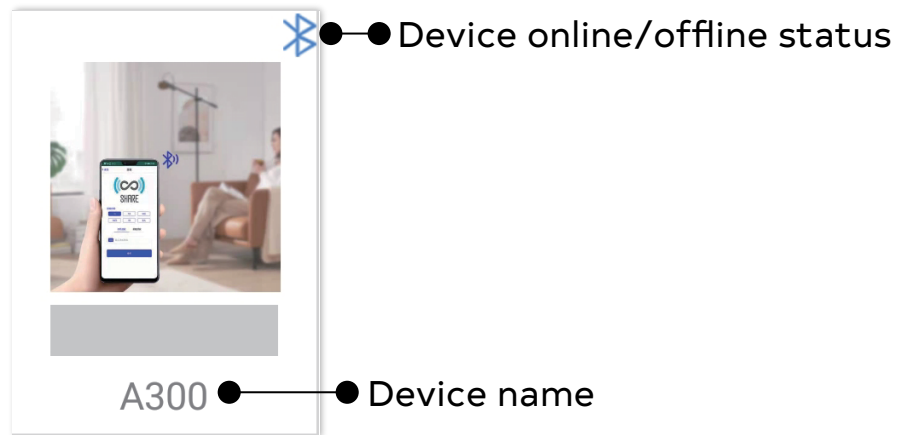
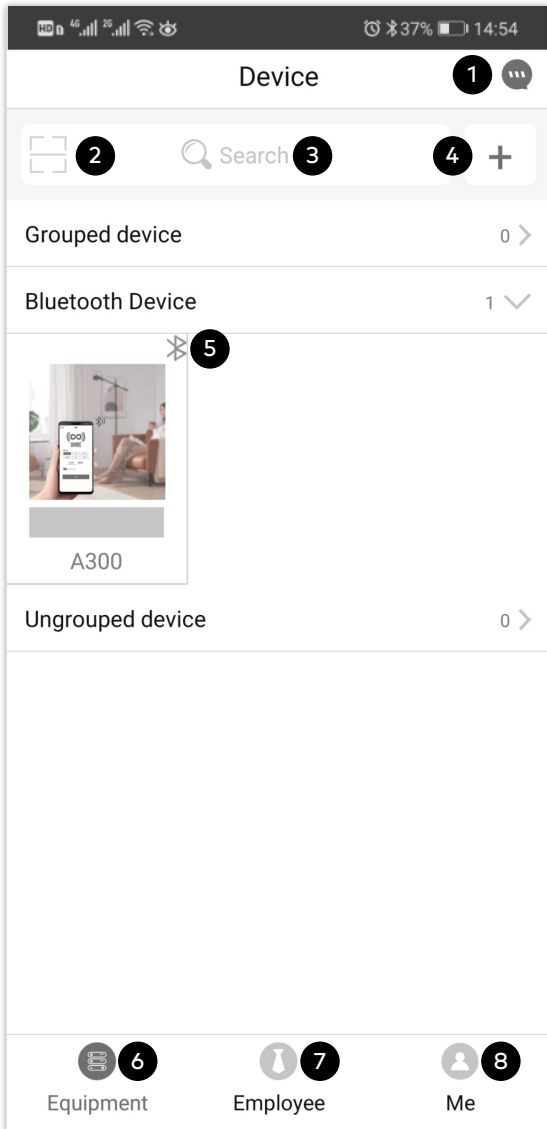
The 'Login' screen displays the 'Aroma world' logo at the top. It has two tabs: 'Telephone' and 'E-Mail'. The form includes a phone number field with a '+86' country code selector and a password field. Below the form are two buttons: a dark 'Login' button and a light 'Bluetooth device' button. At the bottom, there are links for 'Register' and 'Forget Password', a checked checkbox for 'I have read User Agreement', and a section for 'Other login methods' featuring Google and Facebook icons.

Step 1: Click to register a new user: New user can sign up by email address and mobile phone number.

Step 2: If the registered user forget the password, please click "Forget Password" in the bottom right corner, enter the email address or mobile phone number, verification code and new password to submit for confirmation.

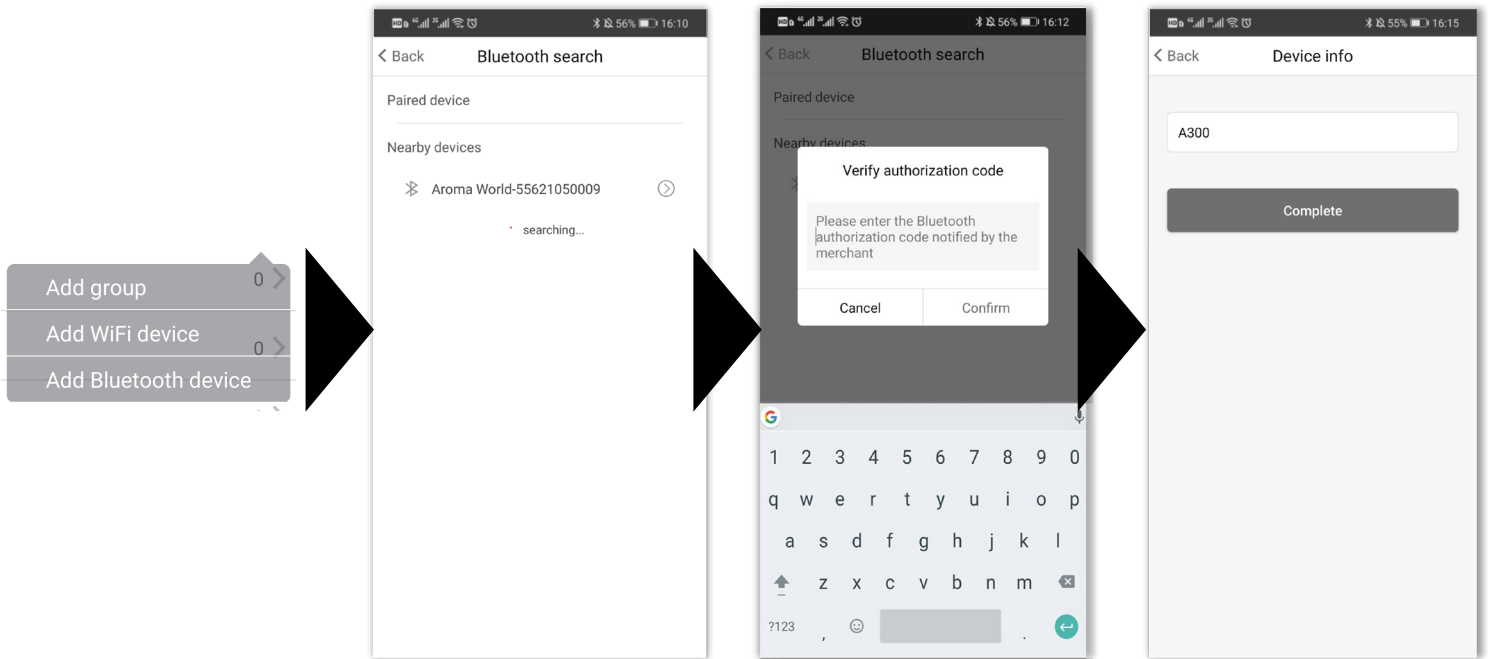
Step 3: Other login methods can also to be used (provided that you

3. Interface Introduction



- ① **Message:** All operation message;
- ② **Scan:** Scan the QR code on the machine to view the detail page interface of device quickly; Scan the QR code of the connected APP device for debugging control (2G device directly scan code control, no pairing, no authorization required).
- ③ **Search box:** Enter device serial number or name to find and control the device quickly ;
- ④ **"+" option:** Create group, add another device;
- ⑤ **Device:** Click to enter the page of device setting;
- ⑥ Access to device management interface;
- ⑦ Access to staff management interface;
- ⑧ Access to personal information center interface.

4. Add Device



Step 1: Press and hold the INTENSITY button on the device until the blue light turns on in the Bluetooth position, and turn on the Bluetooth of the device;

Step 2: Please turn on the phone location/GPS and Bluetooth first, open the "+" sign in the upper right corner of the APP device management interface, select and click "Add Bluetooth device";

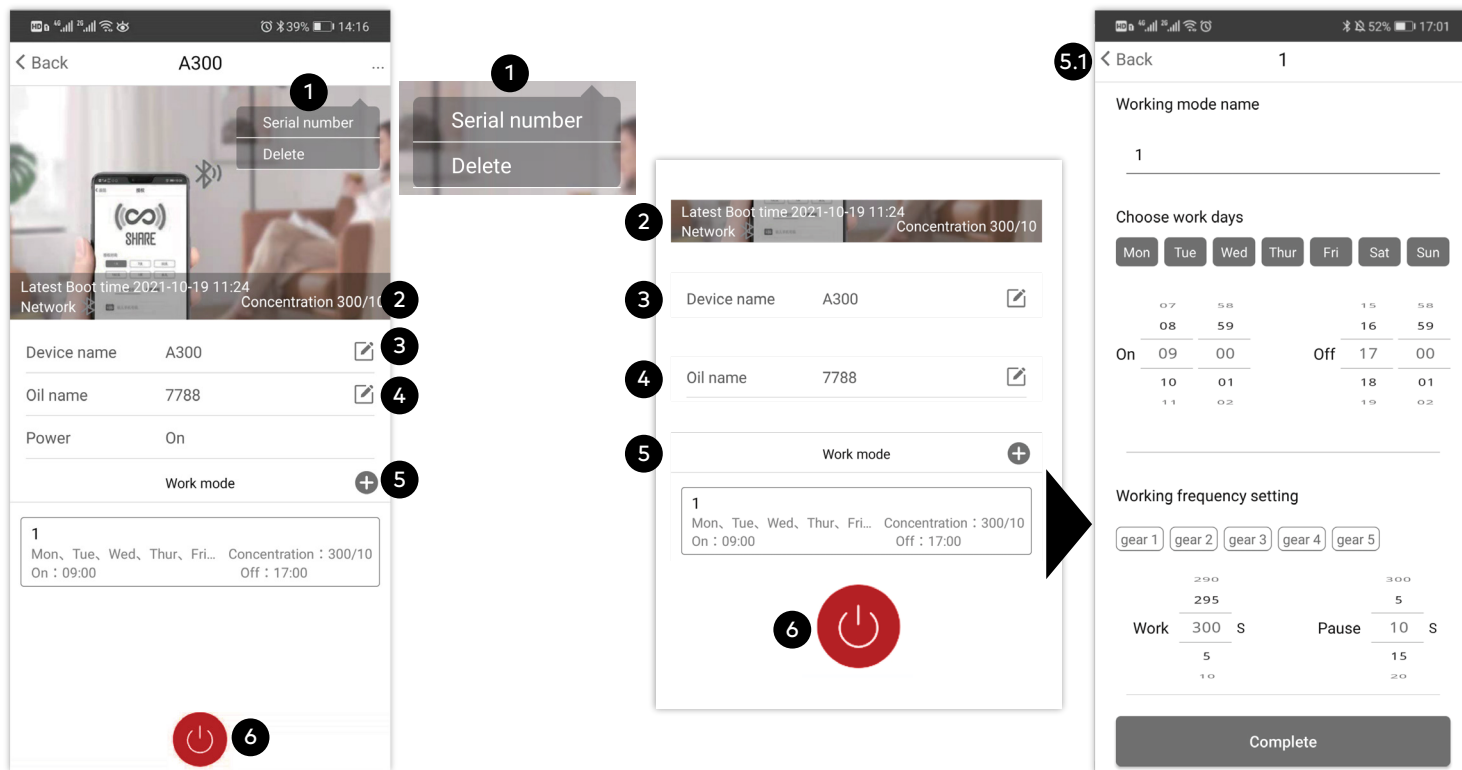
Step 3: Enter the Bluetooth search interface, click on the available device searched, and a verification authorization code window will pop up at this time, enter the authorization code "666666", click to confirm;

Step 4: The basic information of the device can be determined according to its own needs to facilitate later management.

Note: In case of pairing failure, please check:

1. Please make sure that the phone location/GPS and Bluetooth are turn on;
2. Please make sure that the current network signal is good;
3. Please make sure that the authorization code is entered correctly; if necessary, please restart the APP to re-pair.

5. Device Interface



- ① **Message:** Device serial number, delete device;
- ② Display the last boot time, current network status, current working concentration;
- ③ **Device name:** The device name can be modified;
- ④ **Name of essential oil:** The name of essential oil can be modified;
- ⑤ **Operation mode:** The current device operation mode, click the + sign to add the operation mode, enter the 5.1 interface, the working frequency (concentration) can be set by yourself, it can also be set according to the gear position, working time and working frequency. Click the Finish button after completion, and long press to delete the mode. Operation mode can add up to 4 segments;
- ⑥ Device switch button.

MAINTENANCE

In order to ensure the best diffusing effect, please check and maintain the device every six months, or when you replace a new fragrance, or when the diffusing effect gets weak as the following steps:

1. Take off the oil canister which is used.
2. Filling industrial alcohol into the canister and clean it.
3. After cleaning the oil canister, refill canister with little alcohol and install it on the device then make the device stay in working status for 5-8 minutes.
4. Turn off the power when done cleaning.

Attention

Please read this manual in detail before using the device and keep it carefully.

1. Please do not use overloaded power sockets, broken wire and charger. It may endanger your safety and cause a fire, please replace in time if it happens.
2. Please do not try to modify, disassemble or repair the device in order to avoid damage to the device, if you are not a technician. If the device is abnormal, please check whether it is operated normally according to the user manual, or check according to the Malfunction Debugging. If it cannot be solved, please contact seller timely.
3. Please do not invert or tilt the device when used. If the device needs to be transported to other sites, please maintain and clean the device (see Maintenance for details) first before package and transportation, in case of oil leakage to damage the device.
4. Please maintain and clean the device regularly to ensure the device is in best working condition.

Malfunction Debugging

Please try to solve the problem as below before fixing the machine.

Breakdown	Solution
Not Working	<ul style="list-style-type: none">• Check if power adapter is DC5V-1A, and check if DC power interface is well-connected or not.• Check if device is not in work period.
No mist/ Mist gets weak	<ul style="list-style-type: none">• Check if pump works or not, and if airflow from air outlet.• Check if atomizer core and oil tube are loose or blocked.• Check if seal ring gets damaged or fall off.
Oil leakage	<ul style="list-style-type: none">• Check if canister connects to atomizer closely.• Check if seal ring is deformed or damaged• Check if atomizer is damaged.
Abnormal noise	<ul style="list-style-type: none">• Check if air pump is loose, please fix it correctly.• Check if air pump is damage, please replace a new one.

After-sale Service

The warranty is 1 year from the date of sale, not including device shell, adapter, electric wires, seal ring and the other vulnerable parts, as well as the damage caused by human or accident. Permanent maintaining for value will be provided if the machine exceed the warranty.

If there is any issue of after-sales, please contact authorized sales service in corresponding area, or contact Sales Center directly.