

LKSm

Self-priming Peripheral Pump



Application

- Can be used to transfer clean water or other liquids similar to water in physical and chemical properties
- Suitable for small living water supply, automatic water sprinkler system, small air conditioner system or supporting equipment etc.

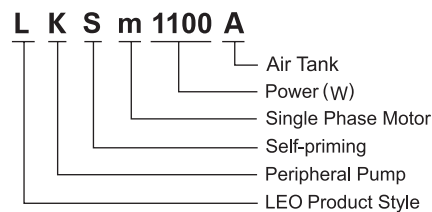
Pump

- With 24 L pressure tank for automatic operation
- Special anti-rust treatment
- Brass impeller
- AISI 304 shaft
- Max. liquid temperature: +40°C
- Max. suction: +9 m

Motor

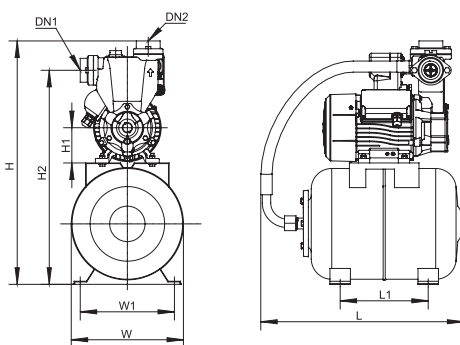
- C&U bearing
- Copper winding
- Built-in thermal protector
- Insulation class: F
- Protection class: IPX4
- Max. ambient temperature: +40°C

Identification Codes



Technical Data

MODEL	POWER		Q (m ³ /h)	0	0.3	0.6	0.9	1.2	1.5	1.8	2.1	2.4	2.7	3	3.3	3.6	3.9	4.2
	kW	HP		Q (l/min)	0	5	10	15	20	25	30	35	40	45	50	55	60	65
LKSm1100A	1.1	1.5	H (m)	60	56	52	48	44	40	36	32	28	24	20	16	12	8	4



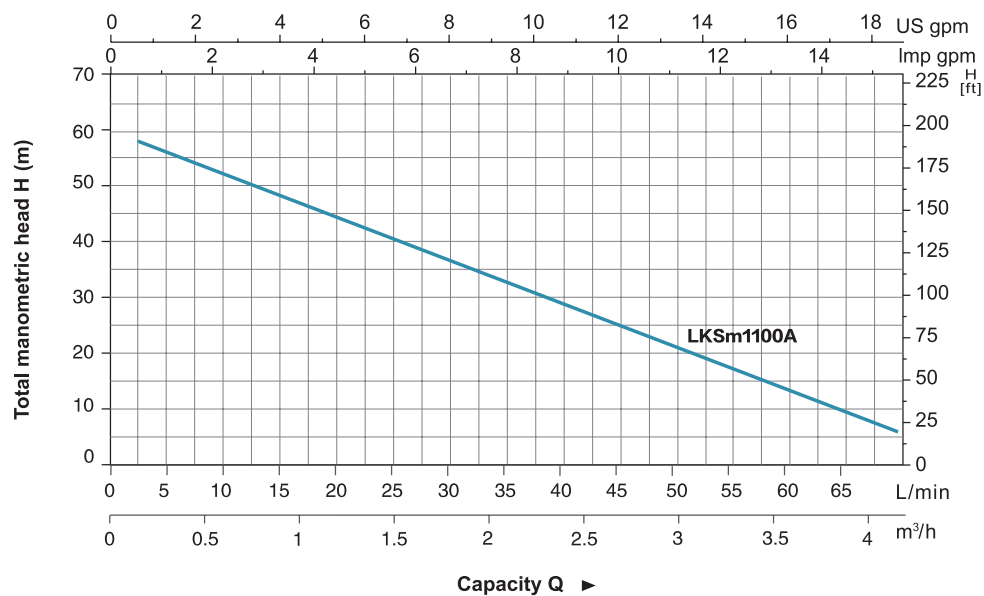
Dimension

Model	DN1	DN2	L (mm)	W (mm)	H (mm)	L1 (mm)	W1 (mm)	H1 (mm)	H2 (mm)
LKSm1100A	1 1/2"	1 1/2"	480	270	595	220	235	86	520

2 YEAR WARRANTY

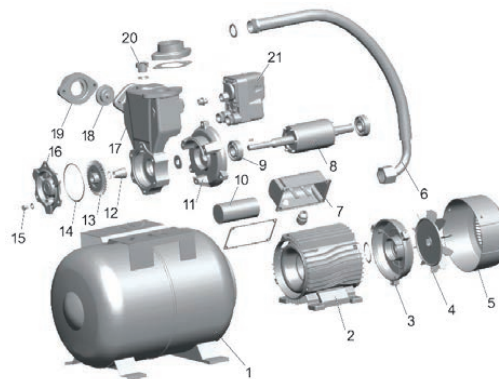


Hydraulic Performance Curves



Materials Table

No.	Part	Material	No.	Part	Material
1	Air tank	Iron	12	Mechanical seal	Carbon/Ceramic
2	Stator		13	Impeller	Brass
3	Rear cover	ZL102	14	O-ring	NBR
4	Fan	PP	15	Screw	Steel
5	Fan cover	PP	16	Pump bonnet	Brass
6	Flexible hose		17	Pump body	HT200
7	Terminal box	ABS	18	Check valve	NBR
8	Rotor		19	Outlet connector	HT200
9	Bearing		20	Filling plug	Brass
10	Capacitor		21	Pressure switch	
11	Front plate	HT200			



Package Information

Model	GW (Kgs)	L (mm)	W (mm)	H (mm)	Quantity (PCS/20' TEU)
LKSm1100A	24	515	325	645	234



LKSm

2 YEAR WARRANTY