

RODENHOUSE



Fastening Systems

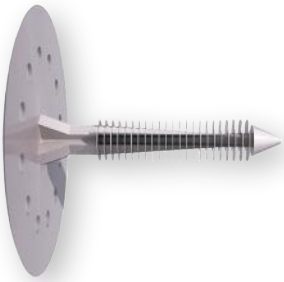
PLASTI-GRIP®

PMF ANCHOR

Continuous Insulation

Attachment to Masonry

Reduces
Thermal Bridging



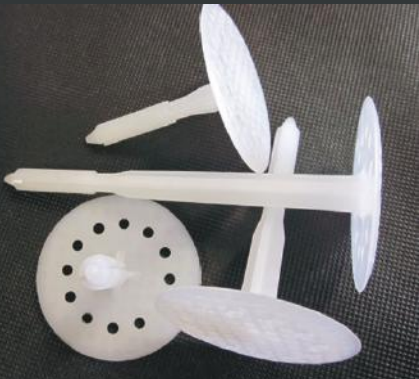
PLASTI-GRIP® PMF ANCHOR

Pre-drill hole with 5/16" masonry bit, then tap PMF with hammer until flush. The 2-3/8" diameter head permanently attaches insulation with a flush finish.



SOLID PLASTIC DESIGN

Reduces thermal-bridging by eliminating inefficient screws / pins.

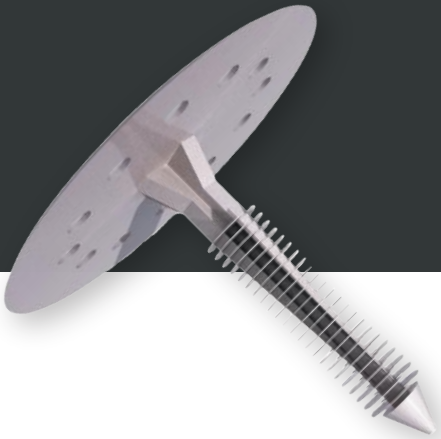


(616) 454-3100

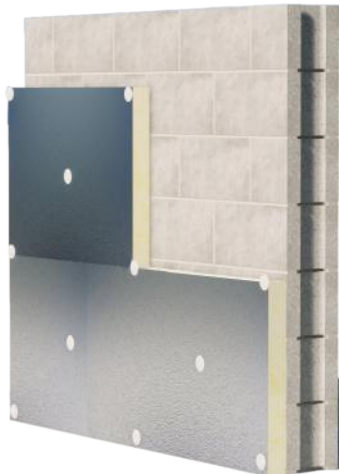
www.rodenhouse-inc.com

PLASTI-GRIP®

PMF ANCHOR



- Attaches all types of rigid insulation to concrete or masonry substrates
- 2-3/8" diameter washer head
- Simple to install - Drill and Hammer
- No pins, screws, or adhesives required
- Solid plastic design reduces thermal-bridging by eliminating inefficient screws / pins
- Textured head design for basecoat adhesion when used with EIFS system



PMF LENGTH

2"
2 3/4"
3 1/2"
4 1/2"
5 3/8"
6 1/4"



INSULATION THICKNESS

1/2" - 3/4"
1" - 1 1/2"
1 1/2" - 2"
2 1/2" - 3"
3 1/2" - 4"
4 1/2" - 5"

Pre-drill with 5/16"
masonry bit

